

Spirit

LIMITED EDITION
TRAVEL TRAILERS
& FIFTH WHEELS

of America™



Leader to the Great Outdoors®



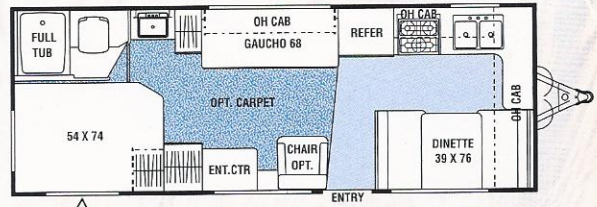
Coachmen®

Recreational Vehicles

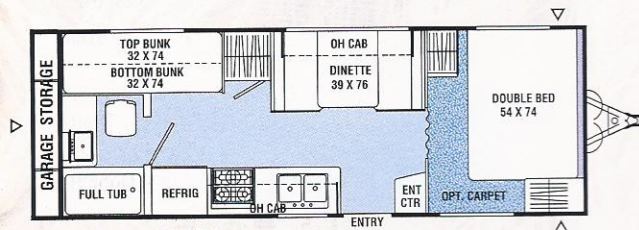
Spirit of America™



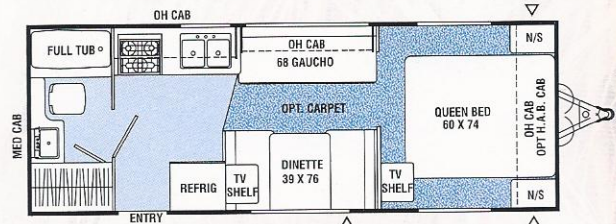
Lite Travel Trailer Floorplans



241FK



248TB



249QB

Specifications

	241FK	248TBG	249QB
Base Weight	3,872	4,033 †	3,783
GVWR	6,020	6,000 †	5,840
Carrying Capacity	2,148	1,967 †	2,057
Hitch Weight	580	560 †	400
Axle Weight	3,292	3,473	3,383
Interior Height	76"	76"	76"
Exterior Height*	9'4"	9'4"	9'4"
Exterior Length	25'2"	24'11"	25'3"
Exterior Width	7'10"	7'10"	7'10"
Hitch Pin Height	17"	17"	17"
Sleeping Capacity	6	6/7	6/7
Fresh Water Capacity (gal.)	32	27	27
Waste Water Capacity (gal.)	34	33	33
Grey Water Capacity (gal.)	32	32	32
Water Heater Capacity	6	6	6
LP Gas Capacity (lb.)	40/60	40/60	40/60
Furnace Rating (x1,000) BTU	25	25	25
Tire Size	ST175/80R13C	ST175/80R13C	ST175/80R13C

*Includes Roof Air Conditioner † Estimated

Base Weight: The weight of the unit with no fluids, cargo, optional equipment or accessories.

GVWR (Gross Vehicle Weight Rating): The maximum permissible weight of the unit, including the Base Weight plus all fluids, cargo, optional equipment and accessories. For safety and product performance, do not exceed the GVWR.

Carrying Capacity: The difference between the Base Weight and the GVWR. This is the amount of weight available for all fluids, cargo, optional equipment and accessories. The actual "loaded" weight will depend on the equipped unit and the owner's individual choice of cargo, etc.

All information contained in this brochure is believed to be accurate at the time of publication. However, during the model year, it may be necessary to make revisions and Coachmen reserves the right to make all such changes without notice, including changes in prices, colors, materials, equipment and specifications, as well as the addition of new models and the discontinuance of models shown in this brochure. Therefore, please consult with your Coachmen dealer and confirm the existence of any materials, design or specifications that are material to your purchase decision.

Lite Travel Trailers

Standard Features

INTERIOR AND DECOR

Golden Cherry Cabinets
Linoleum Flooring
Mini Blinds – Coach
Mini Blinds – Bedroom (Except w/Bunks)
Gaucho (241FK, 249QB)
Booth Dinette
Techwood® Drawers
TV Antenna Ready
Cable TV Jack
LP Leak Alarm
Smoke Detector
Fire Extinguisher

GALLEY

Microwave Ready
3-Burner (Hi- Output) Range Top w/Pots & Pans Drawer
Power Range Hood
Large, Flush Mount, Single Door
Refrigerator
Monitor Panel
Stainless Steel Sink
Silverware Drawer

SLEEPING

Queen Bed (249QB)
Double Bed (241FK, 248TBG)
Bunk Beds (248TBG)
Deluxe Innerspring Mattress – 312 Coil
Pillow Shams
Bedsread

ELECTRICAL/HEATING/ AIR CONDITIONING

GFI Circuit
Outside Receptacle GFI

Patio Light
LP Light
Double 20 LB LP Bottles w/Auto
Change-Over
25,000 BTU E.I. Furnace
13,500 BTU Roof Air Conditioning

BATH AND WATER

Marine Toilet
Power Bath Vent
6-Gallon Gas Water Heater
Water Heater By-Pass Valve
Demand Water Pump
Decorative Bath Hardware
Medicine Cabinet

EXTERIOR/CONSTRUCTION

Clear Safety Glass Radius Windows
White Framed Windows
Pass Through Storage (Except 241FK)
Rubber Roof
Fiberglass Insulation
Gutter Rail with Awning Rail
Single Entry Step
Dead Bolt Lock
Radial Tires
Rally Wheels
Fender Skirts
One Piece Polyethylene Wheel Wells
Break Away Switch
Awning
Rear Garage Storage (248TBG)

Option Packages

OLD GLORY EDITION (Included Features)

- Jack Knife Sofa (241 FK, 249 QB)
- Partial Carpet with Pad – Living & Bedroom
- TV Antenna
- Diamond Plate Stone Guard
- Diamond Plate Bumper Cover

LIBERTY EDITION (Included Features)

- “Old Glory Edition” Features
- 12v AM/FM CD Stereo
- 3-Burner Range w/Oven
- 6-Gallon Gas E.I. Water Heater
- One-Piece ABS Tub Surround
- Flush Mount, Double Door Refrigerator
- Microwave Oven
- Outside Shower
- Skylight

*Straight Axle w/15" Wheels & Double Entry Step is an additional option and is available with the Old Glory Edition package or the Liberty Edition package.

DECOR SELECTIONS

- Blue Marble (Interior Décor)
- Silver Sage (Interior Décor)
- Prairie Sand (Interior Décor)
- Spirit of America (Interior Décor)

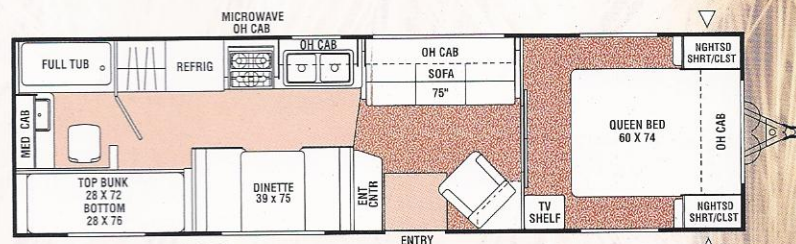
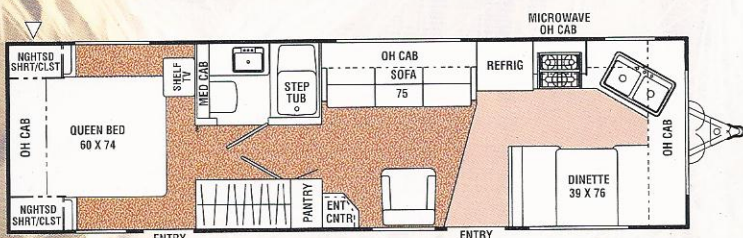
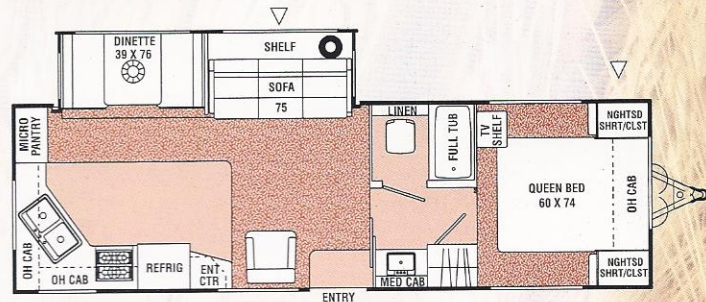


**Couchmen**
Recreational Vehicles

Spirit of America™



Mid-Size Travel Trailer Floorplans



Specifications

	297RKS	298FK	299TB
Base Weight	7,040	5,648	5,950 †
GVWR	10,500	7,860	7,775 †
Carrying Capacity	3,460	2,212	1,825 †
Hitch Weight	970	860	775 †
Axle Weight	6,070	4,788	5,175 †
Interior Height	6'9"	6'9"	6'9"
Exterior Height*	10'2"	10'2"	10'2"
Exterior Length	31'3"	30'10"	31'10"
Exterior Width	8'2"	8'2"	8'2"
Hitch Pin Height	19"	16"	16"
Sleeping Capacity	6	6	9
Fresh Water Capacity (gal.)	42	30	30
Waste Water Capacity (gal.)	40	42	40
Grey Water Capacity (gal.)	42	34	32
Water Heater Capacity	6	6	6
LP Gas Capacity (lb.)	60	60	60
Furnace Rating (x1,000)	30	30	30
Tire Size	X	•	•

Add 8" for Roof Air Conditioner • = ST225/75R15C X = ST225/75R15D † Estimated

Base Weight: The weight of the unit with no fluids, cargo, optional equipment or accessories.

GVWR (Gross Vehicle Weight Rating): The maximum permissible weight of the unit, including the Base Weight plus all fluids, cargo, optional equipment and accessories. For safety and product performance, do not exceed the GVWR.

Carrying Capacity: The difference between the Base Weight and the GVWR. This is the amount of weight available for all fluids, cargo, optional equipment and accessories. The actual "loaded" weight will depend on the equipped unit and the owner's individual choice of cargo, etc.

All information contained in this brochure is believed to be accurate at the time of publication. However, during the model year, it may be necessary to make revisions and Coachmen reserves the right to make all such changes without notice, including changes in prices, colors, materials, equipment and specifications, as well as the addition of new models and the discontinuance of models shown in this brochure. Therefore, please consult with your Coachmen dealer and confirm the existence of any materials, design or specifications that are material to your purchase decision.

Mid-Size Travel Trailer

Standard Features

INTERIOR AND DECOR

- Velvet Cherry Cabinets
- Residential Metal Drawer Guides
- Residential Mirror (299 TB)
- Decorative Picture Frame (297 RKS)
- Linoleum Flooring – Kitchen & Bath
- Mini Blinds – Coach
- Mini Blinds – Bedroom (N/A with Bunks)
- Booth Dinette
- Swivel Rocker
- Cable TV Jack
- TV Shelf – Bedroom
- LP Leak Alarm
- Pre-Wired for Satellite Dish
- Techwood® Drawers
- Pre-Wired for Phone

GALLEY

- Power/Lighted Range Hood
- Monitor Panel
- Stainless Steel Sink
- Silverware Drawer

SLEEPING

- Queen Bed
- Triple Bunk Beds (299 TB)
- Deluxe Innerspring Mattress – 312 Coil
- Bedsread and Pillow Shams
- Bedlift System on Island QB

ELECTRICAL/HEATING/ AIR CONDITIONING

- 30-Amp Service
- Outside Receptacle GFI
- Patio Light
- Off Door Side Utility Light
- LP Light
- Double 30 lb. LP Bottles w/Auto Change over

30,000 BTU E.I. Furnace

In-Floor Ducted Heat

BATH AND WATER

- Marine Toilet
- Power Bath Vent
- Water Heater By-Pass Valve
- Demand Water Pump
- Decorative Bath Hardware
- Medicine Cabinet
- Power Roof Vent
- Below Floor Low Point Drains

EXTERIOR/CONSTRUCTION

- Rubber Roof
- Fiberglass Insulation
- Gutter Rail
- 30" Wide Entrance Door
- Rear Hose Storage Steel Bumper
- Double Entry Step- Primary Door (298 FK, 299 TB)
- Triple Entry Steps – Primary Door (297 RKS)
- Dead Bolt Lock(s)
- Secondary Entrance Door (298 FK)
- Rack and Pinion Slide-Out Room (297 RKS)
- Flush Floor Main Slide-Out Room (297 RKS)
- Retractable Stabilizer Jacks (297 RKS)
- Straight Axles (297 RKS)
- Drop Axles (298 FK, 299 TB)
- Rally Wheels
- Clear Safety Glass Radius White Windows
- Metal Siding
- I-Beam Chassis Construction (N/A 299 TB)

Option Packages

OLD GLORY EDITION (Included Features)

- Hardwood Cabinet Doors
- Jack Knife Sofa
- Partial Carpet & Pad
- TV Antenna
- AM/FM Stereo w/CD
- Residential Size Microwave Oven
- Flush Mount, Double Door Refrigerator
- 3-Burner (High Output) Range w/21" Oven
- 13,500 BTU Ducted Roof Air Conditioner
- One-Piece ABS Tub Surround
- Bathroom Skylight
- Radial Tires
- Diamond Plate Front Stone Guard
- Diamond Plate Bumper Cover
- LP Bottle Cover
- Spare Tire Kit
- Patio Awning
- Retractable Stabilizer Jacks (298FK, 299TB)
- Radius Baggage Doors
- Wrapped Lower Sidewalls
- Owner's Information Package

LIBERTY EDITION (Included Features)

- "Old Glory Edition" Features
- Rechargeable Flashlight
- Rechargeable Wet/Dry Vacuum
- Water Purifier
- Paper Towel Holder
- Outside Shower
- 6-Gallon Gas/Electric E.I. Water Heater
- Large, Flush Mount, Double Door Refrigerator
- Phone Jack

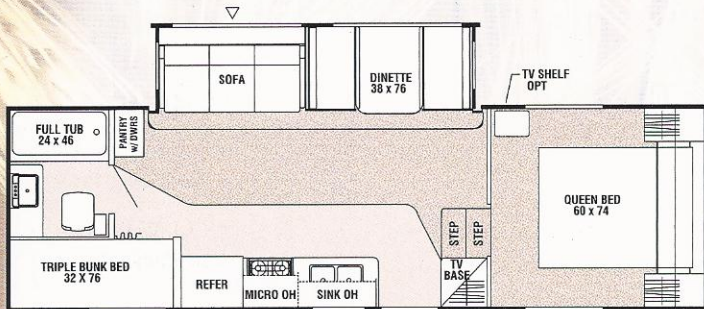
DECOR SELECTIONS

- American Pride (Interior Décor)
- Renaissance Plum (Interior Décor)
- Woodland Indigo (Interior Décor)
- Ebony & Ivory (Interior Décor)

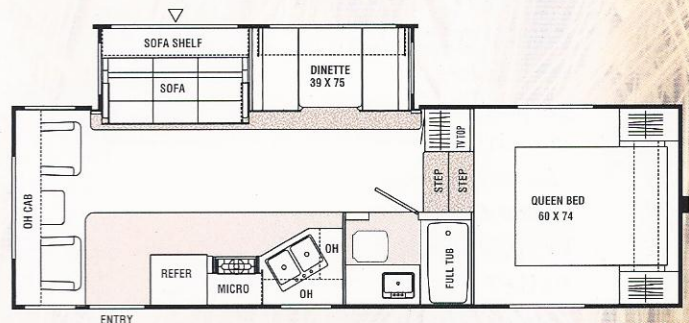




Fifth Wheel Floorplans



525TBS



526RLS

Specifications

	525TBS	526RLS
Base Weight	6,000†	6,000†
GVWR	8,600†	8,600†
Carrying Capacity	2,600	2,600
Hitch Weight	1,300†	1260†
Axle Weight	4,700†	4,740†
Interior Height	5'4"	5'4"
Exterior Height*	11'2"	11'2"
Exterior Length	27'11"	27'4"
Exterior Width	8'2"	8'2"
Hitch Pin Height	45"	45"
Sleeping Capacity	8	6
Fresh Water Capacity (gal.)	42	42
Waste Water Capacity (gal.)	37	37
Grey Water Capacity (gal.)	37	37
Water Heater Capacity	6	6
LP Gas Capacity (lb.)	60	60
Furnace Rating (x1,000)	25	25
Tire Size	•	•

Add 8" for Roof Air Conditioner • = ST225/75D15C X = ST225/75D15D † Estimated

Base Weight: The weight of the unit with no fluids, cargo, optional equipment or accessories.

GVWR (Gross Vehicle Weight Rating): The maximum permissible weight of the unit, including the Base Weight plus all fluids, cargo, optional equipment and accessories. For safety and product performance, do not exceed the GVWR.

Carrying Capacity: The difference between the Base Weight and the GVWR. This is the amount of weight available for all fluids, cargo, optional equipment and accessories. The actual "loaded" weight will depend on the equipped unit and the owner's individual choice of cargo, etc.

All information contained in this brochure is believed to be accurate at the time of publication. However, during the model year, it may be necessary to make revisions and Coachmen reserves the right to make all such changes without notice, including changes in prices, colors, materials, equipment and specifications, as well as the addition of new models and the discontinuance of models shown in this brochure. Therefore, please consult with your Coachmen dealer and confirm the existence of any materials, design or specifications that are material to your purchase decision.

Fifth Wheels

Standard Features

INTERIOR AND DECOR

New Shine Oak Cabinets
Residential Metal Drawer Guides
Partial Carpet with Pad
Linoleum Flooring – Kitchen & Bath
Mini Blinds – Coach
Mini Blinds – Bedroom (N/A with Bunks)
Booth Dinette
Jack Knife Sofa
Two Swivel Rockers (526RLS)
Hardwood Mortise & Tenon Cabinet Doors
Knife Holder
Coat Rack
Soap Dish
LP Leak Alarm
Fire Extinguisher
Smoke Alarm

GALLEY

3-Burner (High Output) Range with Oven
Power/Lighted Range Hood
Flush Mount, Double Door Refrigerator
Stainless Steel Sink

SLEEPING

Queen Bed
Triple Bunk Bed(s) (525TBS)
Deluxe Innerspring Mattress (QB)– 312 Coil
Bedsread
Bedlift System on Island QB

ELECTRICAL/HEATING/ AIR CONDITIONING

30-Amp Service
Outside Receptacle GFI
Patio Light
LP Light
Double 30 lb. LP Bottles w/Auto Change over
25,000 BTU E.I. Furnace
In-Floor Ducted Heat

BATH AND WATER

Marine Toilet
Power Bath Vent
One Piece ABS Tub Surround
6-Gallon Water Heater
Water Heater By-Pass Valve
Demand Water Pump
Decorative Bath Hardware
Medicine Cabinet
Below Floor Low Point Drains

EXTERIOR/CONSTRUCTION

Rubber Roof
Fiberglass Insulation
Gutter Rail
Rear Hose Storage Steel Bumper
Triple Entry Steps – Primary Door
Dead Bolt Lock(s)
Electric Rack and Pinion Slide-Out Room
Flush Floor Main Slide-Out Room
Retractable Stabilizer Jacks
Straight Axles
Rally Wheels
Clear Safety Glass Radius White Windows
Wrapped Lower Sidewalls
Radius Entrance Door
Radius Baggage Doors
Metal Siding
I-Beam Chassis Construction

Option Packages

OLD GLORY EDITION (Included Features)

- 13,500 BTU Ducted Roof Air Conditioner
- Patio Awning
- 6-Gallon Gas/Electric E.I. Water Heater
- TV Antenna and Rotor Package
- Cable TV Jack
- Microwave Oven
- AM/FM Stereo w/CD
- Bedroom TV Shelf
- Main Slideroom Overhead(s)
- Outside Shower
- Phone Jack
- Owner's Information Package

LIBERTY EDITION (Included Features)

- "Old Glory Edition" Features
- Deluxe Sofa w/Hide-A-Bed
- Roof Ladder
- Slideout Room Awning-Coach
- Spare Tire

DECOR SELECTIONS

- American Pride (Interior Décor)
- Blue Stone (Interior Décor)
- Simply Sage (Interior Décor)



**Coachmen**
Recreational Vehicles



**Spirit
of
America™**



LIMITED EDITION
TRAVEL TRAILERS
& FIFTH WHEELS

JERRY'S TRAILERS & CAMPERS
2601 S. 13th St.
Norfolk, NE 68701
(402) 371-1306



Visit our website at: www.coachmenrv.com

COACHMEN RECREATIONAL VEHICLE COMPANY, LLC
P.O. Box 30, Middlebury, IN 46540 • P.O. Box 948, Fitzgerald, GA 31750