

2003 Catalina Travel Trailers & Fifth Wheels



Couchmen®

Recreational Vehicles

*Leader in Brand
Recognition
and Value*

*Reliable,
Innovative Product
Design*

*Best Warranty in
the Industry*



*Fiberglass Sidewalls
are an available
option on all Catalina
Travel Trailers and
Fifth Wheels*



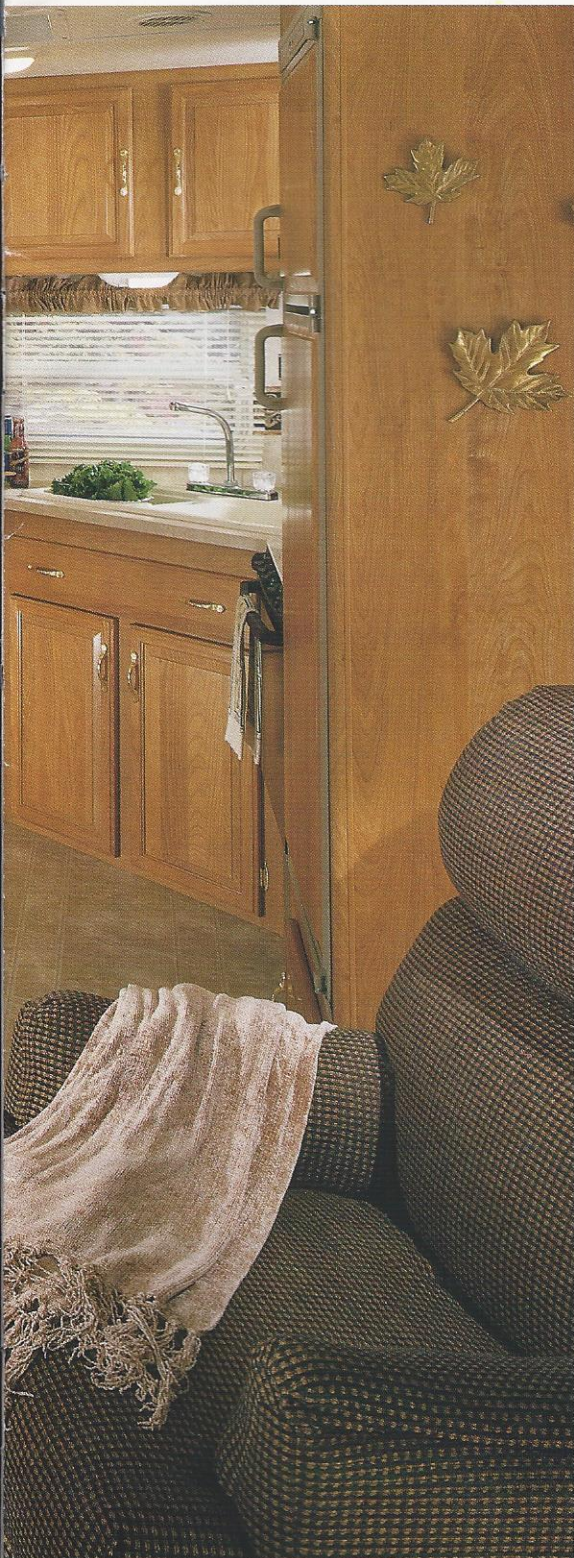
"LEADER TO THE GREAT OUTDOORS"

Catalina...



The spacious and stunning interior of the Catalina 296 FKS features, Welbeck Birch cabinetry, hardwood-raised panel doors, high spout faucet, large composite sink, flush floor (main) slideroom, designer box valences, and much, much, more.

... Exactly What You Want It To Be



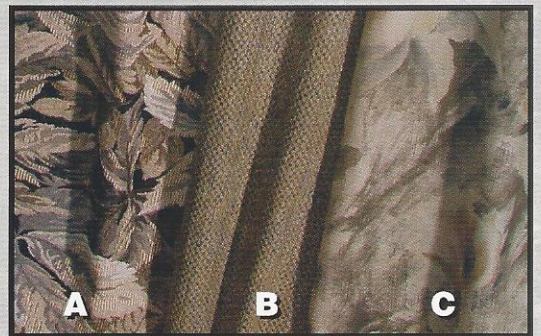
Each individual may have a different idea of what to do with their leisure time, but most people agree there simply isn't enough of it. That's why it's important to make every minute count. You can, with the affordable and value packed Catalina Travel Trailers and Fifth Wheels. Catalina is exactly what you want it to be...a second home at the lake; a weekend getaway; or a comfortable way to travel across the country. Whether you explore new territories or return to the solace of familiar ones, Catalina can take you there with the confidence and peace of mind that only Coachmen can deliver.



Renaissance Plum



Woodland Indigo



Ebony & Ivory

Fabric Key—A. Main B. Accent C. Bedspread

Decor Selections

Dazzling interiors feature skillfully coordinated upholstery and window treatments. Coachmen RV chooses only top-grade fabrics wear-dated as heavy-duty. These fabrics have been tested for durability beyond 15,000 double rubs (in and out action) to simulate heavy usage. An average chair in an American home is subjected to only 3,000 double rubs per year.



Coachmen[®]
Recreational Vehicles

Catalina Features Galore

Discover Catalina travel trailers and fifth wheels by Coachmen, and see the outstanding value that is designed into every coach. These value packed coaches have features galore to enhance your RV'ing experience. It is sometimes the things you can't see like our **SureLine Electrical Harness™** and **Duratube™ LP lines** that set us apart from the crowd, while other times it is the items that are easily visible from inside or outside the coach. Take a minute to see just a few of the benefits that set us apart from the rest.



The optional Hide-A-Bed sofa provides comfortable seating during the day and easily folds out into a large bed for your guests at night.

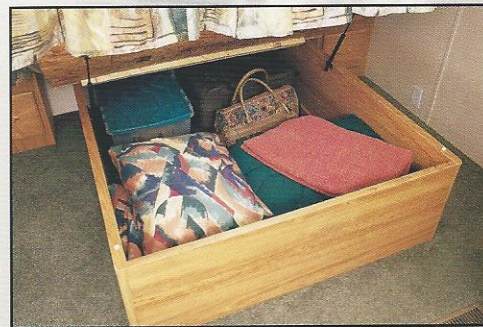
*The Coachmen **Even Cool™** air conditioning system is ducted through the crowned roof, and utilizes AMOCO insulated ductwork with radiused corners to provide for maximum cooling efficiency.*



As part of the convenience package, customized space for a rechargeable flashlight and wet/dry vacuum has been designed right into the coach. A paper towel holder and water purifier are also included with the convenience package.



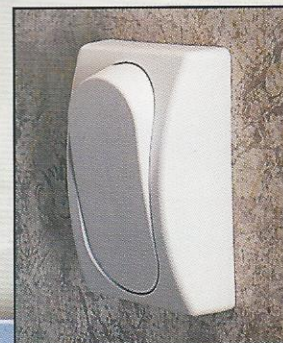
Our standard metal drawer glides with glide wheels provide a friction free sliding drawer that is extremely durable. The drawer glides also act as a catch so that the drawer will not slide open during travel. Simply lift up and pull to open the drawers.



All island queen beds have a large storage bay underneath that is easily accessible with the help of two gas struts.



The double door refrigerator is designed for maximum storage capacity with door storage and a handy freezer shelf. A convenient refrigerator light is also standard for those midnight cravings.



Don't fumble around late at night looking for a tiny light switch. The extra large toggle wall switches are conveniently located and can be flipped on/off with the palm of your hand.



Exterior lighted storage has been utilized to is fullest with multiple locking storage door locations. All baggage doors are radiused to eliminate snags and scratches as you walk by. Convenient door latches are also provided to hold the storage doors open while you grab your gear.



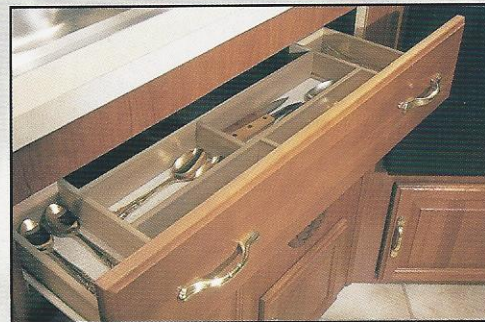
A one piece ABS tub surround provides a protective wall barrier and is a seamless easy to clean surface with custom built in shelving for your shower supplies.



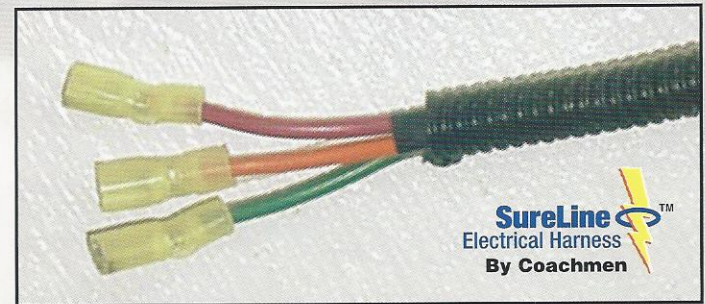
An optional diamond plate stone guard and bumper cover provides a durable layering that is extremely resistant to stone chips and other road debris that you may come across in your travels.



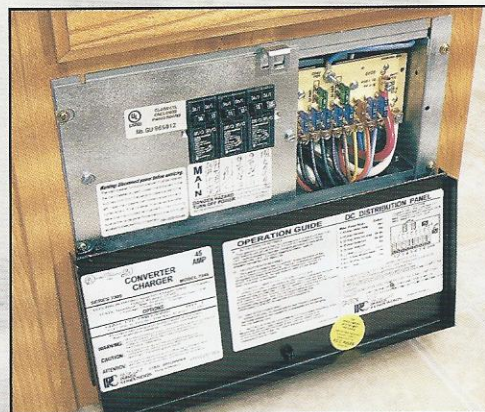
Functional windows in the ends of our sliderooms allow for increased air flow throughout the slideroom and the coach area.



Skillfully designed sink and plumbing placement have allowed us to utilize the under sink space as a convenient silverware/utensil drawer that maximizes your interior storage space.



Coachmen's **SureLine Electrical Harness™** provides color coded wiring and specific wiring schematics for easy serviceability. High quality electrical Scotchguard connectors and autoloom protective covering make for a reliable and durable harness. The wires are grouped together and neatly tucked into the framework under the coach, safe from road debris.



The electronic converter is whisper quiet for a good nights sleep. It also provides a more consistent power to your lights for better illumination.

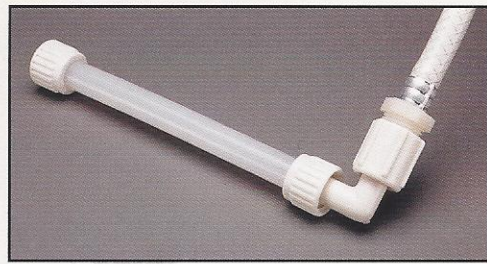


All Coachmen RV products come standard with an LP leak detector, fire extinguisher and smoke detector for your safety.

More Catalina Features...



Get a better picture and more channels with the optional satellite dish.



The Flair-It™ compression fitting water line system reduces the number of fittings used (approximately 56% less). Fewer fittings means lower risk of a leak occurring.



The optional patio door is a great way to open up your RV with more light and a residential feel.



Gutter rails funnel water to the drip caps which act as a small downspout to channel the water out away from the sidewalls of the unit.



All Catalina travel trailers & fifth wheels utilize Duratube™ full length copper LP lines with double flared ends to ensure a tight seal and years of corrosion free use. Coachmen builds quality for the long haul.



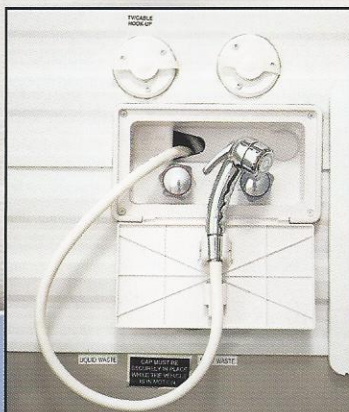
The slideroom awning expands and contracts with the slideroom to keep the exterior elements off of the slideout roof. This eliminates the need to climb up and brush off the dust and debris buildup that can occur over time.



The optional exterior entertainment center is your one stop shop for entertainment with features like: dual marine grade speakers, 110 volt outlet, antenna/cable jack, phone jack, and headphone inputs with a separate volume control.

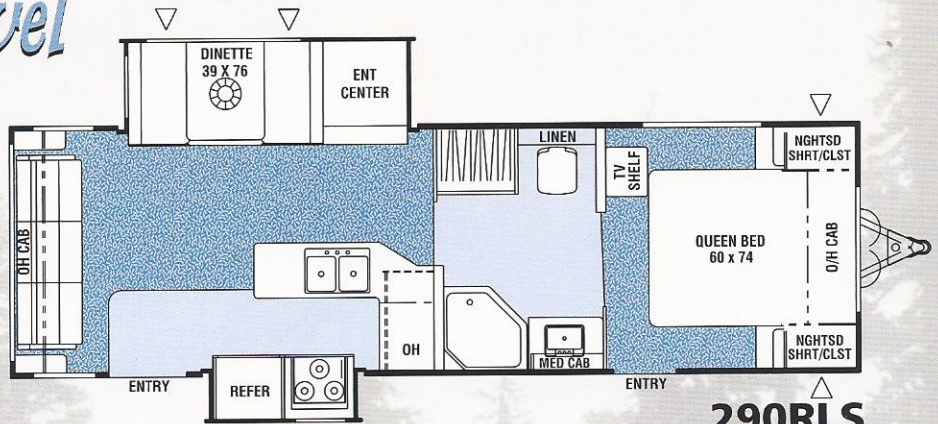


Coachmen's reliable Duraframe™ platform offers outstanding strength and long term durability. Our frames have full width outriggers to support our wall structure, along with full length cross members for a solid floor structure.



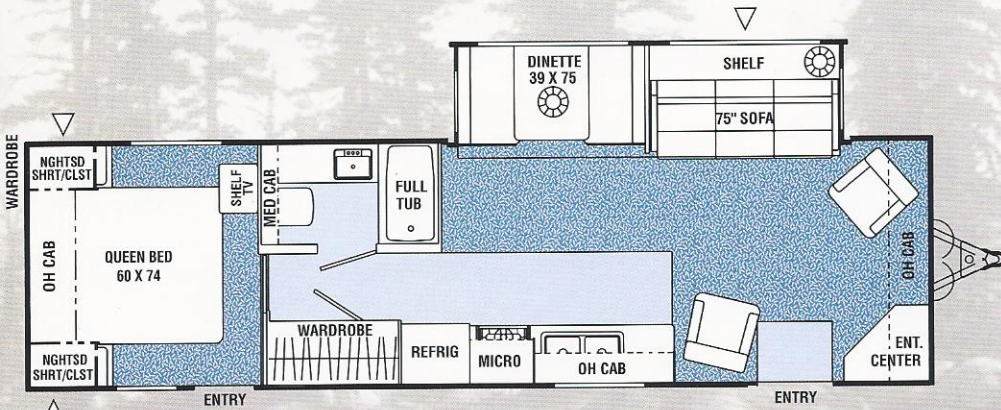
The deluxe outside shower features an ergonomically designed sprayer and can be conveniently tucked away in its own storage bay.

2003 Catalina Travel Trailer Floorplans



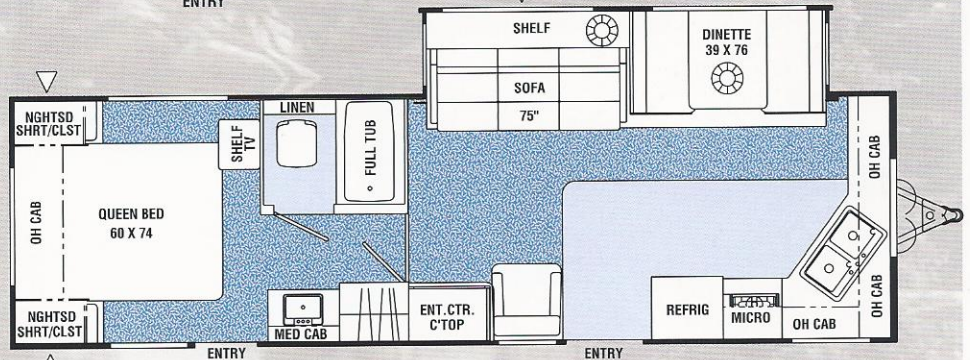
290RLS

Available w/ Options A, B, D



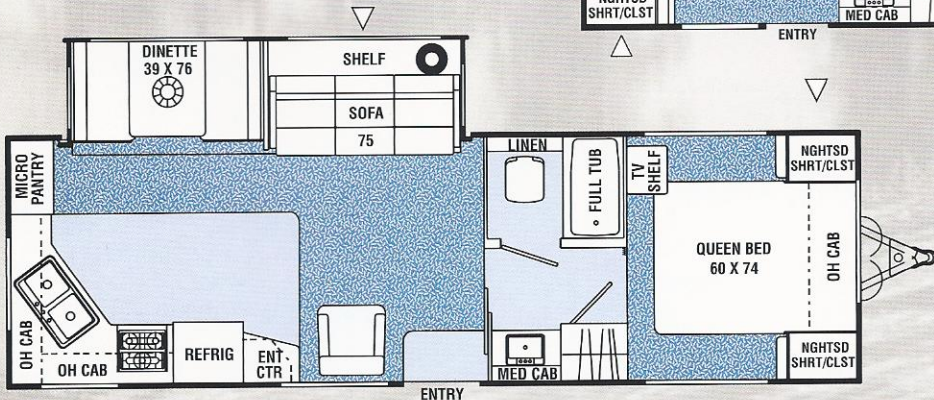
291FLS

Available w/ Options A, B, E



296FKS

Available w/ Options A, B



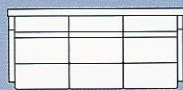
297RKS

Available w/ Options A, B, C

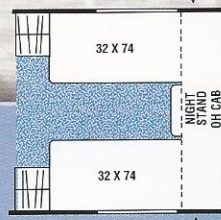
AVAILABLE OPTIONS



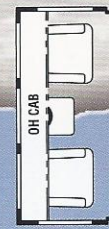
A—Free Standing Dinette



B—Hide-A-Bed Sofa



C—Front Twin Beds



D—Rear Lounge

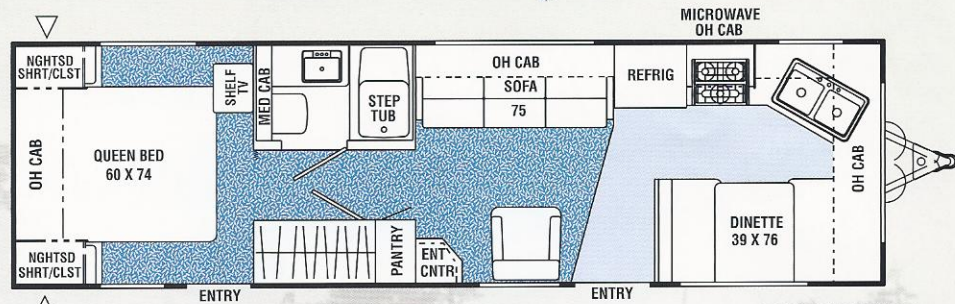


E—Front Entertainment Center

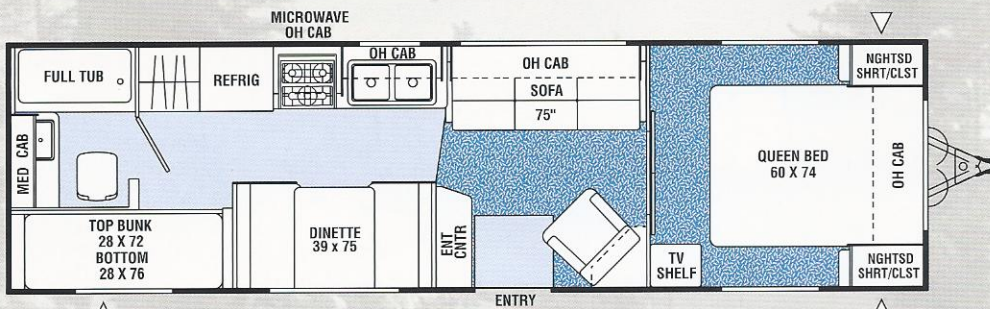
 Indicates Carpeting

 Indicates Outside Storage Location

More 2003 Catalina Travel Trailer Floorplans

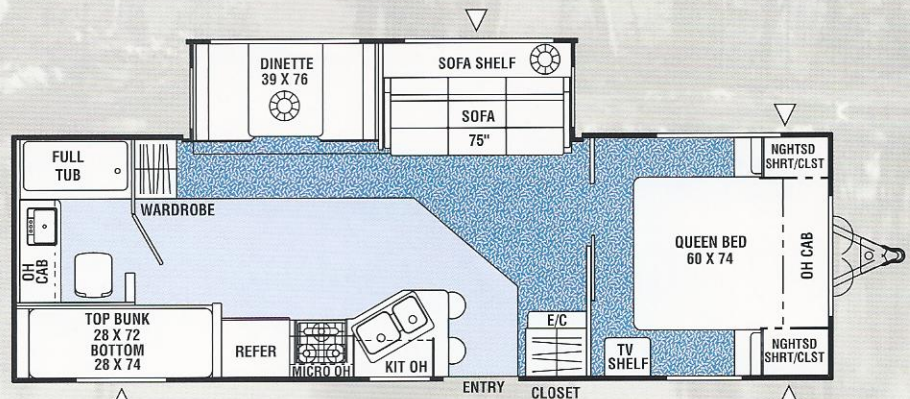


298FK



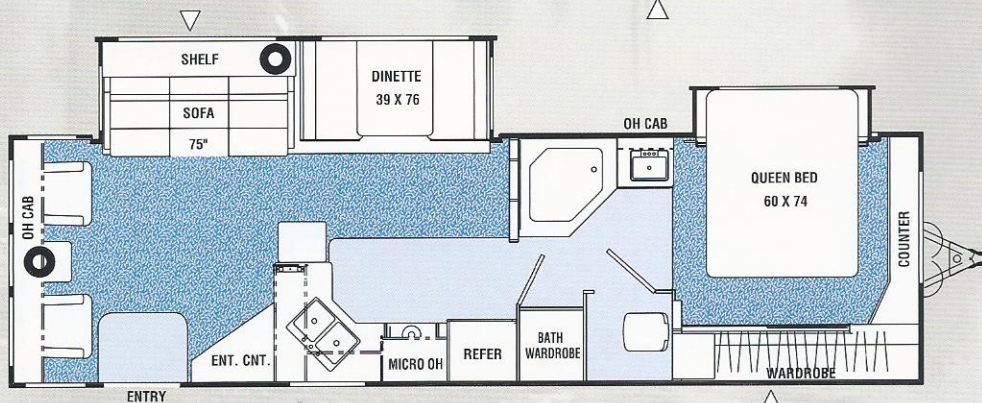
299TB

Available w/ Option C




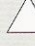
300TBS

Available w/ Option A



326RLS

Available w/ Option A

 Indicates Carpeting
 Indicates Outside Storage Location

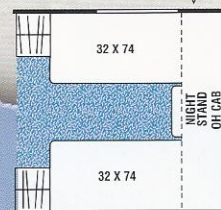
AVAILABLE OPTIONS



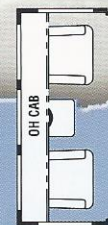
A—Free Standing Dinette



B—Hide-A-Bed Sofa



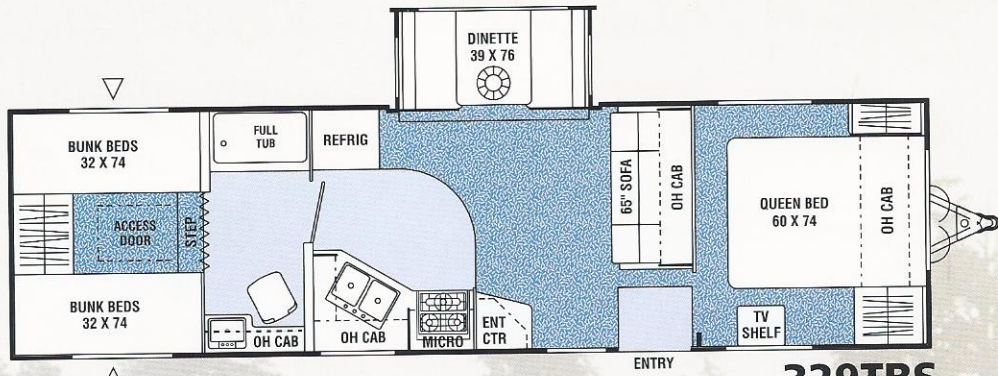
C—Front Twin Beds



D—Rear Lounge

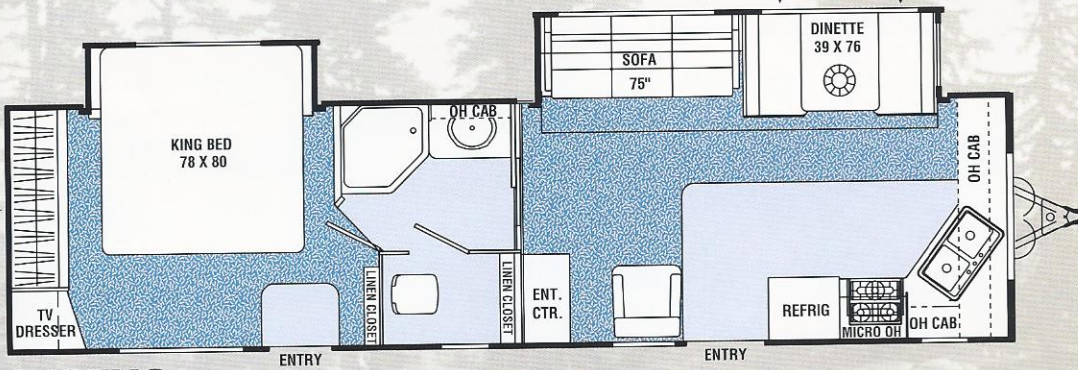


E—Front Entertainment Center



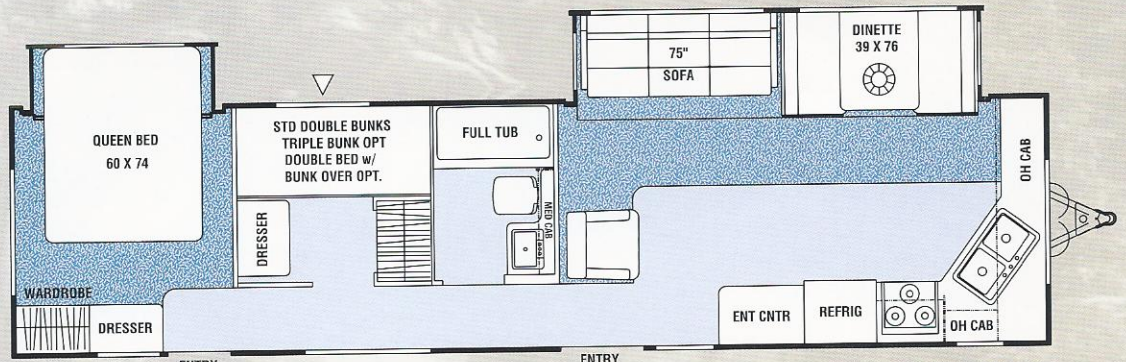
329TBS

Available w/ Options A, B



342FKS

Available w/ Options A, B



355TBS

Available w/ Options A, B



Fiberglass Sidewalls

Fiberglass Sidewalls are an available option on all Catalina Travel Trailers and Fifth Wheels



2003 Catalina Travel Trailer Specifications

Travel Trailer Specifications

	290RLS	291FLS	296FKS	297RKS	298FK	299TB
Base Weight	7,221	7,255	7,040	7,048	5,648	5,950†
GVWR	10,500	10,850	10,500	10,000	7,860	7,775†
Carrying Capacity	3,279	3,595	3,460	2,952	2,212	1,825†
Hitch Weight	770	850	1,000	1,030	860	775†
Axle Weight	6,451	6,405	6,040	6,018	4,788	5,175†
Interior Height	6'9"	6'9"	6'9"	6'9"	6'9"	6'9"
Exterior Height*	10'3"	10'3"	10'3"	10'3"	10'3"	10'3"
Exterior Length	30'2"	33'4"	31'3"	31'	30'10"	31'10"
Exterior Width	8'2"	8'2"	8'2"	8'2"	8'2"	8'2"
Hitch Pin Height	19"	19"	19"	19"	16"/19"	16"/19"
Sleeping Capacity	6/4	6	6/4	6/4	6	8
Fresh Water Capacity (gal.)	42	42	42	42	30	30
Waste Water Capacity (gal.)	40	40	40	40	42	40
Grey Water Capacity (gal.)	42	42	42	42	34	32
Water Heater Capacity	6	6	6	6	6	6
LP Gas Capacity (lb.)	60	60	60	60	60	60
Furnace Rating (x1,000)	31	35	31	31	31	31
Tire Size	X	X	X	X	•	•

*Add 8" for Roof Air Conditioner • = ST225/75R15C X = ST225/75R15D † Estimated

Travel Trailer Specifications (continued)

	300TBS	326RLS	329TBS	342FKS	355TBS
Base Weight	6,800†	7,800†	7,409	8,173	8,295
GVWR	10,000†	10,800†	10,800	11,240	11,230
Carrying Capacity	3,200†	3,000†	3,391	3,067	2,935
Hitch Weight	800†	1,050†	930	1,240	1,230
Axle Weight	6,000†	6,750†	6,479	6,933	7,065
Interior Height	6'9"	6'9"	6'9"	6'9"	6'9"
Exterior Height*	10'3"	10'3"	10'3"	10'5"	10'5"
Exterior Length	30'8"	33'3"	33'10"	35'4"	36'5"
Exterior Width	8'2"	8'2"	8'2"	8'2"	8'2"
Hitch Pin Height	19"	19"	19"	19"	19"
Sleeping Capacity	8/6	6/4	10/8	6/4	8/9
Fresh Water Capacity (gal.)	42	42	42	42	42
Waste Water Capacity (gal.)	40	42	42	40	40
Grey Water Capacity (gal.)	40	42	42	40	42
Water Heater Capacity	6	6	6	6	6
LP Gas Capacity (lb.)	60	60	60	60	60
Furnace Rating (x1,000)	31	35	35	40	40
Tire Size	X	X	X	X	X

*Add 8" for Roof Air Conditioner • = ST225/75R15C X = ST225/75R15D † Estimated

Base Weight: The weight of the unit with no fluids, cargo, optional equipment or accessories.

GVWR (Gross Vehicle Weight Rating): The maximum permissible weight of the unit, including the Base Weight plus all fluids, cargo, optional equipment and accessories. For safety and product performance, do not exceed the GVWR.

Carrying Capacity: The difference between the Base Weight and the GVWR. This is the amount of weight available for all fluids, cargo, optional equipment and accessories. The actual "loaded" weight will depend on the equipped unit and the owner's individual choice of cargo, etc.

Wider Widths: Numerous Coachmen floorplans feature the "wide body" design concept, which gives you significantly enhanced interior living space and innovative floorplans.

In making your purchase decision, you should be aware that a few states restrict access on some or all roads within the state to vehicles with a maximum 96" width, although special road

usage permits may be available. Vehicles up to 102" in width are permitted in the vast majority of states. You should confirm the road usage laws in the states of interest to you before making your purchase decision. If width is of concern to you, we invite you to consider the broad array of other Coachmen models offered in the standard 96" width.

All information contained in this brochure is believed to be accurate at the time of publication. However, during the model year, it may be necessary to make revisions and Coachmen reserves the right to make all such changes without notice, including changes in prices, colors, materials, equipment and specifications, as well as the addition of new models and the discontinuance of models shown in this brochure. Therefore, please consult with your Coachmen dealer and confirm the existence of any materials, design or specifications that are material to your purchase decision.

2003 Catalina Travel Trailer Standard Features & Options

INTERIOR AND DECOR

Welbeck Birch Cabinets
 Raised Panel Hardwood Cabinet Doors
 Residential Metal Drawer Glides
 Techwood® Drawers
 Partial Carpet with Pad
 Linoleum Flooring – Kitchen & Bath
 Mini Blinds – Coach
 Mini Blinds – Bedroom (N/A w/Bunks)
 Fire Extinguisher
 Smoke Alarm
 Residential Mirror (291FLS, 299TB, 329TBS)
 Two Swivel Rockers (290RLS, 291FLS, 326RLS)
 Booth Dinette
 Jack Knife Sofa
 Swivel Rocker (Except 290RLS, 291FLS, 300TBS, 326RLS, 329TBS)
 Residential Picture Frame (except 296FKS, 298FK, 300TBS)
 Residential AM/FM Stereo w/CD
 Cable TV Jack
 TV Antenna and Rotor Package
 TV Shelf – Bedroom
 Shoe Shelf (291FLS, 298FK, 326RLS, 342FKS)
 LP Leak Alarm
 Prewired for Satellite Dish
 Prewired for Phone

GALLEY

Residential Size Microwave
 3-Burner (Hi Output) Range Top w/21" Oven
 Power/Lighted Range Hood
 Flush Mount, Double Door Refrigerator

Monitor Panel

Large Composite Sink
 Silverware Drawer

SLEEPING

King Bed (342FKS)
 Queen Bed (except 342FKS)
 Double Bunk Beds (329TBS, 355TBS)
 Triple Bunk (299TB, 300TBS)
 Deluxe Innerspring Mattress – 312 Coil
 Bedspread and Pillow Shams
 Bedlift System on Island QB
 Laundry Chute (329TBS)

BATH AND WATER

Marine Toilet w/Foot Pedal
 Power Bath Vent
 One-Piece ABS Tub Surround
 6-Gallon Water Heater
 Water Heater By-Pass Valve
 Demand Water Pump
 Decorative Bath Hardware
 Medicine Cabinet
 Below Floor Low Point Drains

ELECTRICAL/HEATING/

AIR CONDITIONING

30-Amp Service w/ Electric Power Converter
 Outside Receptacle GFI
 Patio Light
 Off Door Side Utility Light
 LP Light
 Double 30 LB LP Bottles w/Auto Change Over
 31,000 BTU E.I. Furnace (290RLS, 296FKS, 297RKS, 298FK, 299TB, 300TBS)

35,000 BTU E.I. Furnace (291FLS, 326RLS, 329TBS)
 40,000 BTU E.I. Furnace (342FKS, 355TBS)
 In-Floor Ducted Heat
 13.5 BTU Ducted Roof Air Conditioner

EXTERIOR/CONSTRUCTION

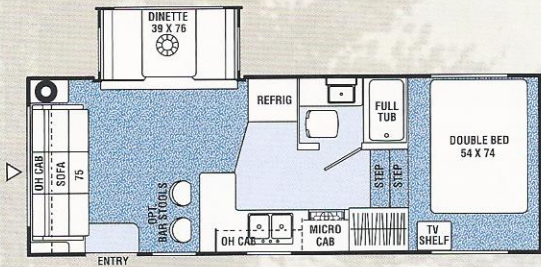
Rubber Roof
 Fiberglass Insulation
 Gutter Rail
 30" Wide Entrance Door
 Rear Hose Storage Steel Bumper
 Double Entry Step – Primary Door (Non Slide-Out Models)
 Triple Entry Steps – Primary Door (All Slide-Out Models)
 Dead Bolt Lock(s)
 Secondary Entrance Door (290RLS, 291FLS, 296FKS, 298FK, 342FKS, 355TBS)
 Electric Rack & Pinion Slide-Out Room (All Slide-Out Models)
 Flush Floor - Main Slide-Out Room
 Retractable Stabilizer Jacks (All Slide-Out Models)
 Straight Axles (All Slide-Out Models)
 Radial Tires
 Rally Wheels
 Clear Safety Glass Radius Windows
 I-Beam Chassis Construction
 Patio Awning
 Wrapped Lower Sidewall
 Radius Baggage Doors
 Metal Siding

Make it Personal!

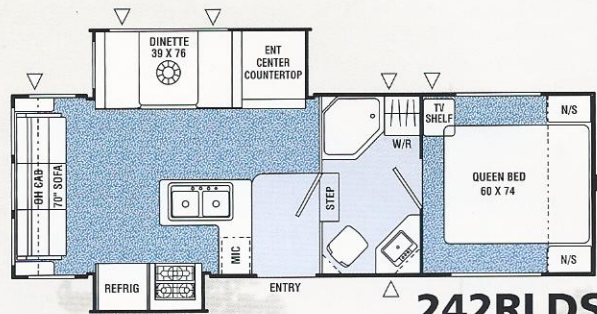
Select from the **Optional Equipment** listed below to build your Catalina Travel Trailer your way.

- Double Bed w/Bunk Over (355TBS)
- Triple Bunks (355TBS)
- Twin Beds (297RKS, 299TB)
- Double Bunk Beds (300TBS)
- Raised Panel Refrigerator Door Inserts
- Free-Standing Dinette w/4 Chairs (Except 298FK, 299TB)
- Deluxe Sofa w/Hide-A-Bed (290RLS, 291FLS, 296RLS, 297RKS, 329TBS, 342FKS, 355TBS)
- Satellite TV System
- Front Entertainment Center (291FLS)
- Outside Entertainment Center
- Phone Jack
- Recliner (Except 290RLS, 291FLS, 300TBS, 326RLS, 329TBS)
- Two Wall Hugger Recliners (290RLS, 291RLS, 326RLS)
- Two Bar Stools (300TBS)
- Rear Lounge (290RLS)
- Large, Flush Mount, Double Door Refer
- Large Residential Refer (355TBS)
- 6-Gallon Gas/Electric E.I. Water Heater
- 6-Gallon E.I. Water Heater
- Outside Shower
- Frosted Glass Shower Door (Except 298FK, 299TB, 300TBS)
- Bathroom Skylight
- Foam Core Insulation Package (N/A w/Filon® Option)
- Tinted Safety Glass – Radius Windows
- 15,000 BTU Air Conditioner (Coach Only)
- 2nd 13,500 BTU Ducted Roof Air Conditioner (N/A 298FK) (Non-Ducted-299TB, 329TBS)
- Wire and Frame 2nd Air Conditioner (N/A 298FK)
- 50 Amp Service (Mandatory with 2nd Roof A/C, Wire and Frame for 2nd A/C Options)
- LP Bottle Cover
- Power Hitch Jack
- Spare Tire Kit
- Retractable Stabilizer Jacks (Non-Slide Models)
- Straight Axle (Non-Slide Models)
- Slide-Out Awning – Bedroom (326RLS, 342FKS, 355TBS)
- Slide-Out Awning – Coach (All Slide Models)
- CSA Upfit (Mandatory For All Canadian Provinces)
- Filon® Fiberglass Sidewalls w/Deluxe Graphic Package
- Roof Ladder
- Sliding Patio Door w/Grab Handle (326RLS, 329TBS, 342FKS, 355TBS)
- Convenience Package (Rechargeable Flashlight, Rechargeable Wet/Dry Vac., Paper Towel Holder, Water Purifier)
- Owner's Information Package
- Diamond Plate Stoneguard & Bumper Cover
- Main Slideroom Overheads (N/A 329TBS)
- Sink Covers
- Fluorescent Lighting

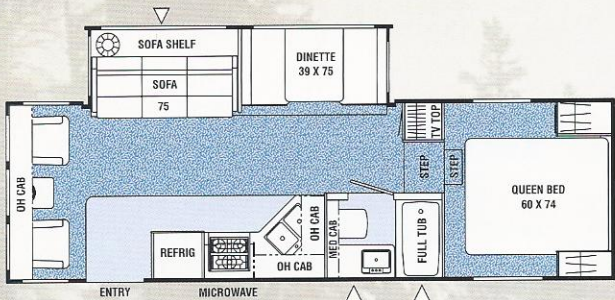
2003 Catalina Fifth Wheel Floorplans



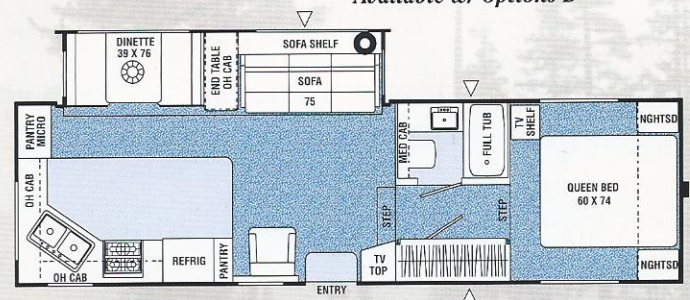
237RLS Available w/ Options A, D



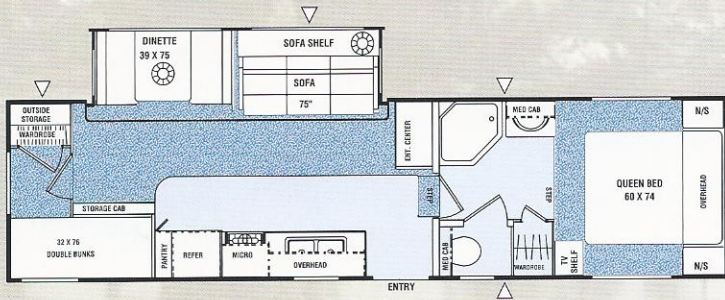
242RLDS
Available w/ Options D



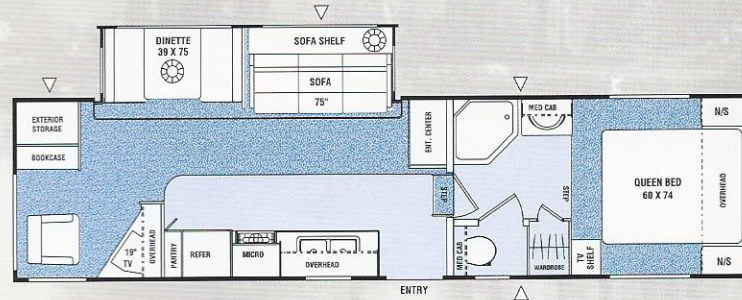
246RLS Available w/ Options A, B



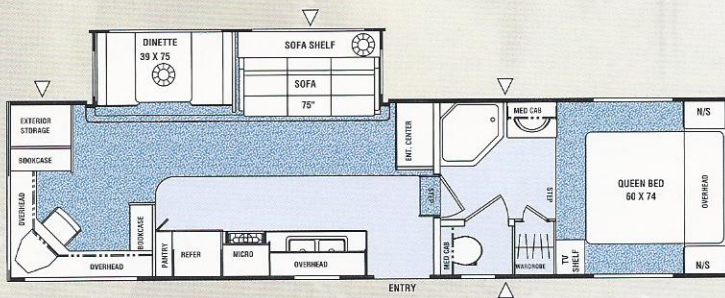
285RKS Available w/ Options A, B, C, E



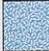

310TBS Available w/ Options A, B, C



311RDS Available w/ Options A, B, C



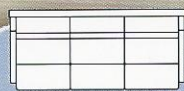
312ROS Available w/ Options A, B, C

 Indicates Carpeting
 Indicates Outside Storage Location

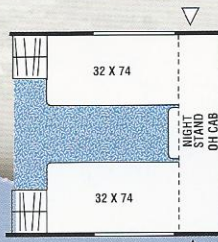
AVAILABLE OPTIONS



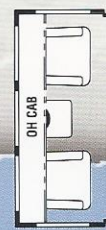
A—Free Standing Dinette



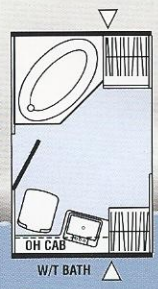
B—Hide-A-Bed Sofa



C—Front Twin Beds



D—Rear Lounge



E—W/T Bath

2003 Catalina Fifth Wheel Specifications

Fifth Wheel Specifications

	237RLS	242RLDS	246RLS	285RKS	310TBS	311RDS	312ROS
Base Weight	6,062	6,896	6,932	8,076	9,200†	9,200†	9,200†
GVWR	8,990	9,430	9,230	11,800	13,900†	13,900†	13,900†
Carrying Capacity	2,928	2,534	2,298	3,724	4,700†	4,700†	4,700†
Hitch Weight	990	1,430	1,230	1,800	1,900†	1,900†	1,900†
Axle Weight	5,072	5,466	5,702	6,276	7,300†	7,300†	7,300†
Interior Height	6'10"	6'10"	6'10"	6'10"	6'10"	6'10"	6'10"
Exterior Height*	10'5"	11'2"	11'2"	11'10"	12'2"	12'2"	12'2"
Exterior Length	24'10"	26'2"	26'3"	30'8"	33'	33'	33'
Exterior Width	8'5"	7'10"	7'10"	7'10"	8'3"	8'3"	8'3"
Hitch Pin Height	46"	46"	46"	45"	45"	45"	45"
Sleeping Capacity	4/6	4	6	4/6	6/8	6	6
Fresh Water Capacity (gal.)	36	30	42	47	47	47	47
Waste Water Capacity (gal.)	42	50	40	50	30	30	30
Grey Water Capacity (gal.)	42	50	40	50	60	60	60
Water Heater Capacity	6	6	6	6	6	6	6
LP Gas Capacity (lb.)	60	60	60	60	60	60	60
Furnace Rating (x1,000) BTU	25	31	31	31	35	35	35
Tire Size	ST205/75R15C	ST225/75R15C	ST225/75R15C	ST225/75R15D	LT235/85R16E	LT235/85R16E	LT235/85R16E

*Add 8" for Roof Air Conditioner † Estimated

Base Weight: The weight of the unit with no fluids, cargo, optional equipment or accessories.

GVWR (Gross Vehicle Weight Rating): The maximum permissible weight of the unit, including the Base Weight plus all fluids, cargo, optional equipment and accessories. For safety and product performance, do not exceed the GVWR.

Carrying Capacity: The difference between the Base Weight and the GVWR. This is the amount of weight available for all fluids, cargo, optional equipment and accessories. The actual "loaded" weight will depend on the equipped unit and the owner's individual choice of cargo, etc.

Wider Widths: Numerous Coachmen floorplans feature the "wide body" design concept, which gives you significantly enhanced interior living space and innovative floorplans.

In making your purchase decision, you should be aware that a few states restrict access on some or all roads within the state to vehicles with a maximum 96" width, although special road

usage permits may be available. Vehicles up to 102" in width are permitted in the vast majority of states. You should confirm the road usage laws in the states of interest to you before making your purchase decision. If width is of concern to you, we invite you to consider the broad array of other Coachmen models offered in the standard 96" width.

All information contained in this brochure is believed to be accurate at the time of publication. However, during the model year, it may be necessary to make revisions and Coachmen reserves the right to make all such changes without notice, including changes in prices, colors, materials, equipment and specifications, as well as the addition of new models and the discontinuance of models shown in this brochure. Therefore, please consult with your Coachmen dealer and confirm the existence of any materials, design or specifications that are material to your purchase decision.



Engineering

At Coachmen RV, we utilize and rely on advanced computer technology to design and engineer a reliable and safe vehicle for you and your family. Finite Element Analysis helps evaluate structural integrity of components and systems quickly and efficiently. 3-D model simulations and numerous other process and software systems are also used in the design and development of Coachmen recreational vehicles to build the quality and reliability that you expect from Coachmen.

2003 Catalina Fifth Wheel Standard Features & Options

Fifth Wheel Standard Features

INTERIOR AND DECOR

Welbeck Birch Cabinets
Raised Panel Hardwood Cabinet Doors
Residential Metal Drawer Glides
Techwood® Drawers
Carpet with Pad - Living Room & Bedroom
Linoleum Flooring - Kitchen & Bath
Mini Blinds - Coach
Mini Blinds - Bedroom (N/A w/Bunks)
Booth Dinette
Jack Knife Sofa
Swivel Rocker (285RKS, 311RDS)
2 Swivel Rockers (237RLS, 242RLDS, 246RLS)
Residential AM/FM Stereo w/CD
Cable TV Jack
TV Antenna & Rotor Package
TV Shelf - Bedroom
LP Leak Alarm
Trash Can
Prewired for Satellite Dish
Prewired for Phone Jack
Wallpaper Border - Kitchen
Fire Extinguisher
Smoke Alarm
Residential Picture Frame (242RLDS, 285RKS, 310TBS, 311RDS, 312ROS)
Residential Mirror (237RLS, 246RLS)

GALLEY

Residential Size Microwave Oven
3-Burner (Hi Output) Range w/21" Oven
Power/Lighted Range Hood
Flush Mount, Double Door Refrigerator

Monitor Panel
Composite Sink
Silverware Drawer

SLEEPING

Queen Bed (Except 237RLS)
Double Bed (237RLS)
Deluxe Innerspring Mattress - 312 Coil
Bedsread & Pillow Shams
Bedlift System on Island DB or QB

BATH AND WATER

Marine Toilet w/Foot Pedal
Power Bath Vent
One-Piece ABS Tub Surround
6-Gallon Water Heater
Water Heater By-Pass Valve
Demand Water Pump
Decorative Bath Hardware
Medicine Cabinet
Below Floor Low Point Drains

ELECTRICAL/HEATING/ AIR CONDITIONING

Outside Receptacle GFI
30 Amp Service
GFI Circuit
Patio Light
Off Door Side Utility Light
Hitch Light
Double 30 LB LP Bottles w/Auto Change Over
25,000 BTU E.I. Furnace (237RLS)
31,000 BTU E.I. Furnace (242RLDS, 246RLS, 285RKS)

35,000 BTU E.I. Furnace (310TBS, 311RDS, 312ROS)

Electronic Converter
In-Floor Ducted Heat
13,500 BTU Roof Air Conditioner (237RLS)
13,500 BTU Ducted Roof Air Conditioner (Except 237RLS)

EXTERIOR/CONSTRUCTION

Rubber Roof
Clear Safety Glass Radius Windows
Fiberglass Insulation
30" Wide Entrance Door
Rear Hose Storage Steel Bumper
Triple Entry Steps at Primary Door
Dead Bolt Lock(s)
Flush Floor Slide Room
Electric Rack & Pinion Slideout Room
Retractable Stabilizer Jacks (Slide-Out Models)
Radial Tires
Rally Wheels
Patio Awning
Gutter Rail
Straight Axles
Adjustable Spring Hangers
I-Beam Chassis Construction
Radius Baggage Doors
Metal Siding
Wrapped Lower Sidewalls
Break Away Switch



Make it Personal!

Select from the **Optional Equipment** listed below to build your Catalina Fifth Wheel your way.

- Twin Beds (285RKS, 310TBS, 311RDS, 312ROS)
- Two Bar Stools (237RLS)
- Free Standing Dinette w/4 Chairs (Except 242RLDS)
- Rear Lounge (237RLS & 242RLDS)
- Deluxe Sofa w/Hide-A-Bed (Except 237RLS, 242RLDS)
- Recliner (285RKS, 311RDS)
- Two Recliners (237RLS, 242RLDS, 246RLDS)
- Outside Entertainment Center
- Satellite TV System
- Phone Jack
- 19" Color TV (285RKS, 310TBS)
- Jack Knife Sofa in Living Room (237RLS)
- Large, Flush Mount, Double Door Refrigerator (242RLDS & Up)
- Raised Panel Refrigerator Door Inserts
- 6-Gallon Gas/Electric E.I. Water Heater
- 6-Gallon E.I. Water Heater
- Outside Shower
- Foam Core Insulation Package
- Tinted Safety Glass - Radius Windows
- 15,000 BTU Air Conditioner (Coach Only)
- Second 13,500 BTU Roof Air Conditioner (285RKS, 310TBS, 311RDS, 312ROS)
- Wire and Frame for 2nd A/C (285RKS, 310TBS, 311RDS, 312ROS)
- 50 Amp Service (Mandatory w/2nd Roof A/C and Wire and Frame for 2nd A/C Options) (285RKS, 310TBS)
- Electric Front Jacks - Single Motor
- Spare Tire Kit
- Shock Absorbers (Except 237RLS)
- Slide-Out Room Awning - Off Doorside (All Slide Out Models)
- Slide-Out Room Awning - Doorside (242RLDS)
- CSA Upfit (Mandatory for all Canadian Provinces)
- Filon® Fiberglass Sidewalls
- 42" Ceiling Fan w/Light (285RKS, 310TBS, 311RDS, 312ROS)
- Roof Ladder
- Bathroom Skylight
- Convenience Package (Rechargeable Flashlight, Rechargeable Wet/Dry Vac, Paper Towel Holder, Water Purifier)
- Owner's Information Package
- Main Slideroom Overhead (310TBS, 311RDS, 312ROS)
- Sink Cover
- Frosted Glass Shower Door (242RLDS, 285RKS, 310TBS)

TAKE TIME TO DISCOVER THE COACHMEN STORY

Services & Tools

- **Industry Leading "Buckstopper" Warranty** – Coachmen's exclusive Buckstopper Limited Warranty provides one-year coverage on most parts, components and appliances. Coachmen stands behind their product and is supported by a network of over 300 service centers.
- **Two Year Structural & Major Components Manufacturer's Warranty** – Coachmen provides a two-year structural and major components manufacturer's warranty, along with a complete written Warranty Summary Guide, for your peace of mind.
- **Comprehensive Owners Information** – For your convenience we offer published materials on key equipment and options, as well as information pertaining to the function of important components. We also offer a true *Trouble Shooting & Maintenance Guide* for the simple answers to frequently asked questions.
- **Toll Free Service Numbers** – These toll free phone numbers provide you with direct access to a Coachmen RV Service Representative.



- **Dealer Support Tools** – Coachmen makes sure that their dealers are well equipped and trained to service your needs with: Systems Manuals, PDI Manuals, Electronic Parts Catalogs, Coach Link "On-Line" Electronic Dealer Communication System, and continual service training.
- **Service Support Center Web Site** – Coachmen provides you access to key information 24-hours a day through the Internet. On-line you can find a Service Dealer Locator, Maintenance Information, Trouble Shooting Information, Product Warranty Information, Customer "E-Assistance", Frequently Asked Questions (FAQ's), and Publications ordering dating back to 1972 models.
- **Priority Parts Ordering** – Coachmen provides a program for overnight parts shipment in critical repair situations.
- **Ultimate Satisfaction First** – Coachmen cares about their customers. We reach out through our customer surveys to gather valuable information, suggestions and feedback regarding your purchase and ownership experiences. Listening to our customers helps us achieve your "Ultimate Satisfaction First".



Hidden Quality Makes the Difference

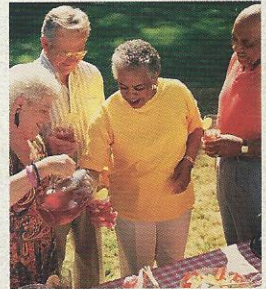
Coachmen RV is committed to providing a high quality, reliable, and innovative product. We know that quality extends far beyond the "glitz" of a recreational vehicle and often, the most important aspects of quality are hidden in the design and construction of the coach. That's why Coachmen designs quality into our products up-front, through computer aided design and analysis software. This helps to assure appropriate weight distributions, structural integrity, alignment of the various parts and components and overall reliability of the design.

Our attention to quality does not stop on the computer screen, as all of our major product designs undergo rigorous road tests, rain booth testing, complete compliance audits for all codes, standards and safety related items, and comprehensive product audits.

Coachmen designs, builds and markets a superior product, for reasons that may not always be easy to see, however are very easy to appreciate down the road. Our hidden quality equates to high value, which can be critical to your long-term satisfaction.

Coachmen Caravan Camping Club

Coachmen Caravan Camping Club is your ticket to making friends for life. Share old stories and make new, in the company of fellow Coachmen Caravan members. With the purchase of a Coachmen RV, you are invited to join the nation's largest manufacturer sponsored RV club with a **FREE 1st year basic membership or discounted Platinum membership**. As part of the Coachmen Caravan family, you will receive incredible membership benefits that will help to ensure your safety and enjoyment throughout your RV experiences. Enjoy your Coachmen RV more with the Coachmen Caravan Camping Club.



Leader to the Great Outdoors

Coachmen RV Company is a proven leader in the RV Industry with over 38 years of experience. We are dedicated to providing a high quality, reliable, and innovative product backed by high quality service support. Our mission is simple ... to meet and exceed your expectations and to make your total RV experiences memorable and enjoyable!

Coachmen RV Company ... A Great Product, A Great Company, A Great Name!
Coachmen RV Company ... "Leader to the Great Outdoors"

JERRY'S TRAILERS & CAMPERS

2601 S. 13th St.
Norfolk, NE 68701
(402) 371-1306



Visit our website at: www.coachmenrv.com

Coachmen Recreational Vehicle Company, LLC
P.O. Box 30, Middlebury, IN 46540 • P.O. Box 948, Fitzgerald, GA 31750

