

2003 Captiva Travel Trailers



# Couchmen®

Recreational Vehicles

*Leader in Brand  
Recognition  
and Value*

*Reliable,  
Innovative Product  
Design*

*Best Warranty in  
the Industry*



"LEADER TO THE GREAT OUTDOORS"

# Captiva...

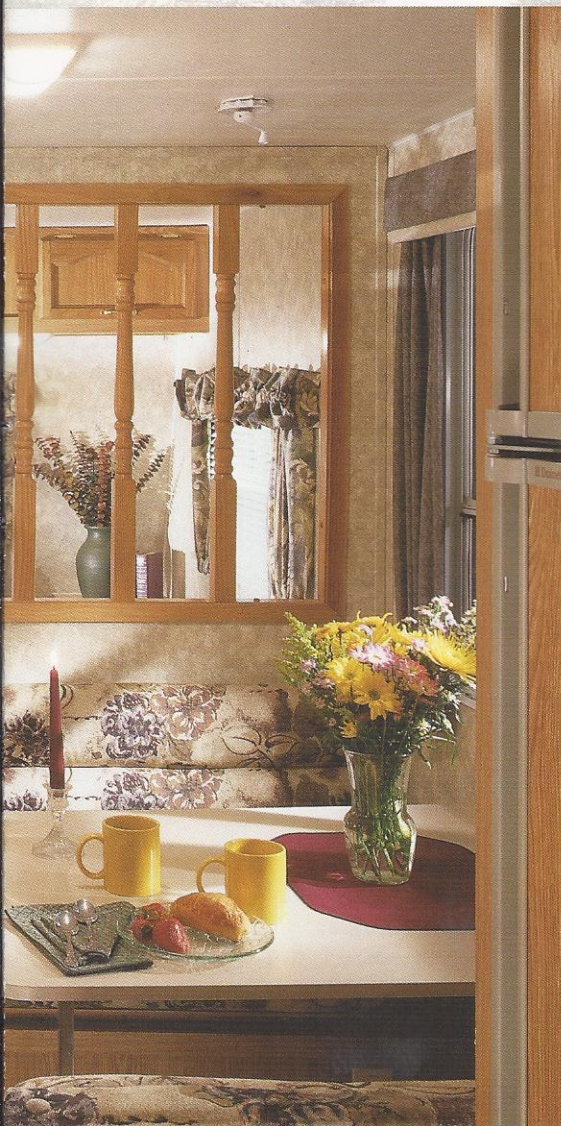


*The high spout faucet is a nice residential touch that makes for simple cleanup of your taller pots and pans. You can also easily fill up your ice-tea jar on a hot summer day.*



*The optional convection microwave bakes and browns just like a standard oven, all the while cutting down on the cooking time.*

# ... Put Some Adventure in Your Life

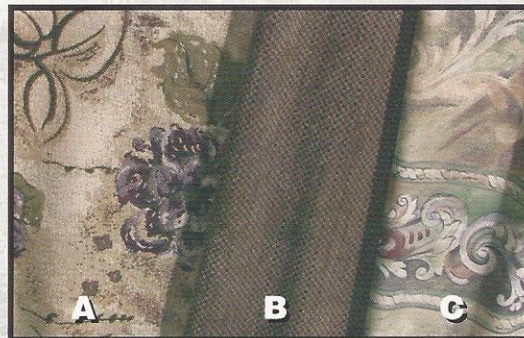


The interior of the Captiva is wonderfully appointed with etched glass cabinet inserts, mortise and tenon cabinet construction, residential box valences, large composite sink, self edged countertops, stunning New Shine Oak woodgrain and much, much more.

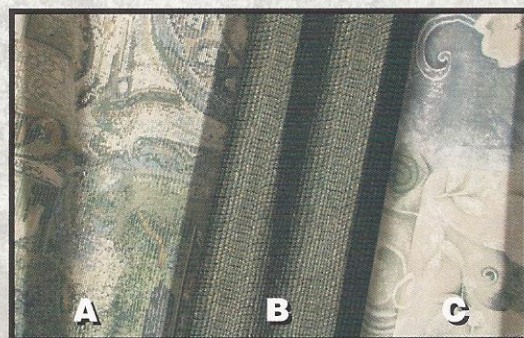


Skillfully designed sink and plumbing placement have allowed us to utilize the under sink space as a convenient silverware/utensil drawer that maximizes your interior storage space.

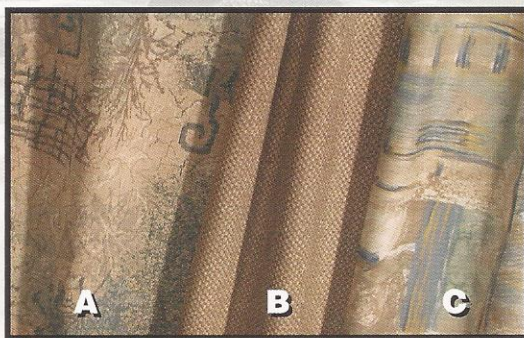
The Captiva by Coachmen is designed with light truck, mini-van and sport utility owners in mind. These travel trailers boast a pre-engineered, ultra light weight steel frame that is a solid foundation for easy towability. An aerodynamic profile, Torflex™ axles with independent suspension, and computer aided weight distribution provides a smoother, more stable tow on bumpy roads or windy days. The Captiva is a reliable, value added, light weight unit backed by a Company you can count on.



Sandalwood Plum



Summer Sage



Prairie Sand

Fabric Key—A. Main B. Accent C. Bedspread

## Decor Selections

Dazzling interiors feature skillfully coordinated upholstery and window treatments. Coachmen RV chooses only top-grade fabrics wear-dated as heavy-duty. These fabrics have been tested for durability beyond 15,000 double rubs (in and out action) to simulate heavy usage. An average chair in an American home is subjected to only 3,000 double rubs per year.



**Coachmen**  
Recreational Vehicles

# Captiva Features Galore

Step into a Captiva travel trailer by Coachmen, and see the outstanding value that is designed into every coach. These light weight and easy to tow vehicles have features galore to enhance your RV'ing experience. It's sometimes the things you can't see like our **Alumicage™** construction and **Duratube™** LP lines that set us apart from the crowd, while other times it's the items that are easily visible from inside or outside the coach. Take a minute to see a few of the benefits that set us apart from the rest.



*Don't fumble around late at night looking for a tiny light switch. The extra large toggle wall switches are conveniently located and can be flipped on/off with the palm of your hand.*



*A rechargeable flashlight and rechargeable wet/dry vacuum make up the optional convenience package. With customized space for the items, designed right into the coach, they are out of the way, yet still within short reach when necessary.*

*The Coachmen **Even Cool™** air conditioning system is ducted through the crowned roof, and utilizes AMOCO insulated ductwork with radiused corners to provide for maximum cooling efficiency. (Ducted A/C not available on 199 DB)*



**Even Cool™**  
By Coachmen



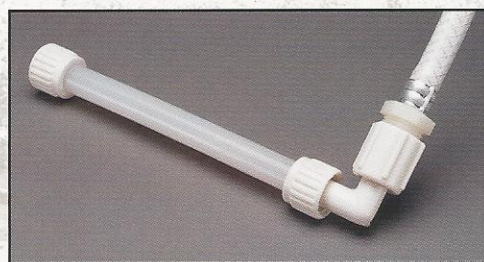
*All Captiva's feature beautiful, color coordinated box valance window treatments for enhanced interior residential appeal.*



*All Coachmen RV products come standard with an LP leak detector, fire extinguisher and smoke detector for your safety.*



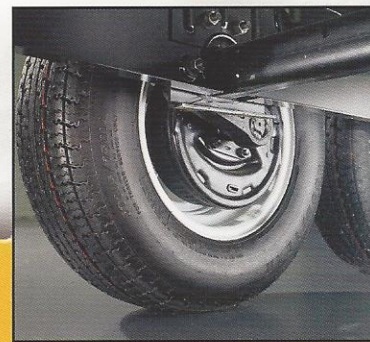
*The optional 12V AM/FM Stereo with CD player option is conveniently mounted underneath the overhead cabinets so it is up and out of the way.*



*The **Flair-It™** compression fitting water line system reduces the number of fittings used (approximately 56% less). Fewer fittings means lower risk of a leak occurring.*



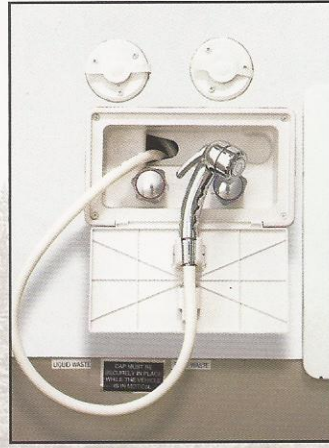
*The optional Winegard satellite lays flat for aerodynamics when traveling and easily cranks up from the interior of the coach when you get to your destination.*



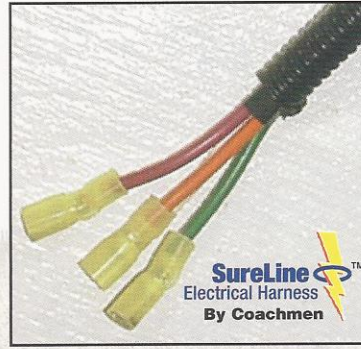
*All four tires utilize independent suspension and Torflex® axles for improved towability and a smoother ride for the trailer.*



A one piece ABS tub surround provides a protective wall barrier with an easy to clean seamless surface, and built in shelving for your shower supplies.



The deluxe outside shower features an ergonomically designed sprayer and can be conveniently tucked away in its own storage bay



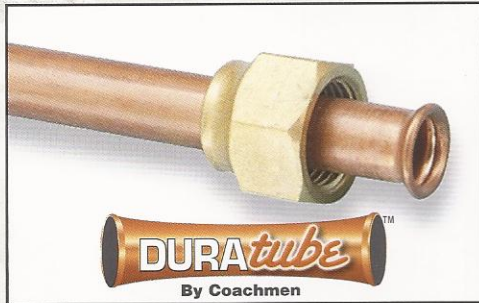
Coachmen's **SureLine Electrical Harness™** provides color coded wiring and specific wiring schematics for easy serviceability. High quality electrical Scotchguard connectors and autoloom protective covering make for a reliable and durable harness. The wires are grouped together and neatly tucked into the framework under the coach, safe from road debris.



Our standard metal drawer glides with glide wheels provide a friction free sliding drawer that is extremely durable. The drawer glides also act as a catch so that the drawer will not slide open during travel. Simply lift up and pull to open the drawers.



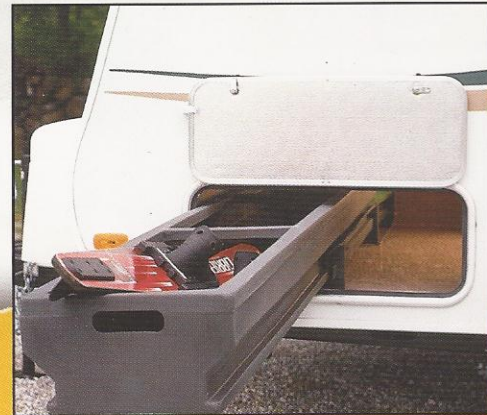
The lightweight **Norco** sectional frame is fastened together with huck fasteners (the same fasteners as used on the Hummer). This frame is the ultimate conglomeration of lightweight and durable.



All Coachmen Captiva travel trailers utilize **Duratube™** full length copper LP lines with double flared ends to ensure a tight seal and years of corrosion free use. Coachmen builds quality for the long haul.



Jalousie bedroom windows tilt out design allows them to be opened for ventilation even when the weather outside is less than favorable. Just because the rain keeps you inside doesn't mean that you can't enjoy fresh air outside.



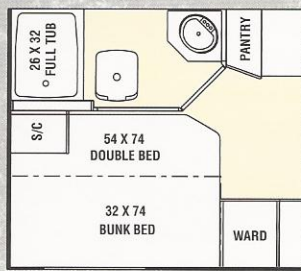
Exterior storage has been utilized to its fullest with complete pass through storage on most models. Add the optional slide out storage tray for easy access to all of your stored gear.



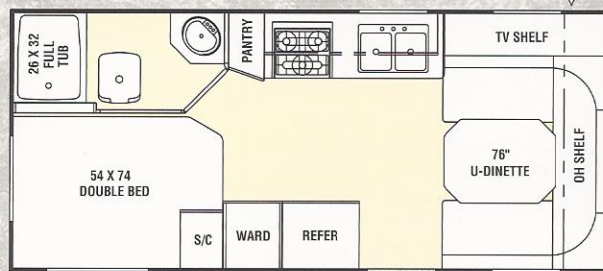
All Captiva travel trailers feature **Alumicage™** construction. This lightweight, corrosion resistant, aircraft grade aluminum is utilized throughout the roof and walls for superior strength and ultra light weight.



# 2003 Captiva Travel Trailer Floorplans

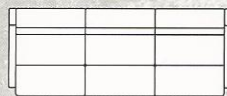


△ UPPER BUNK OPT.

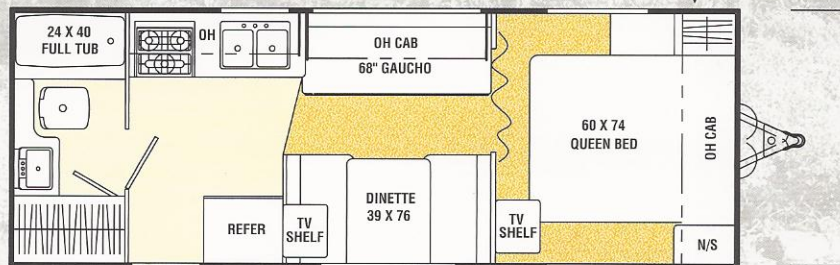


△ FRONT WINDOW OPT.

**199DB**

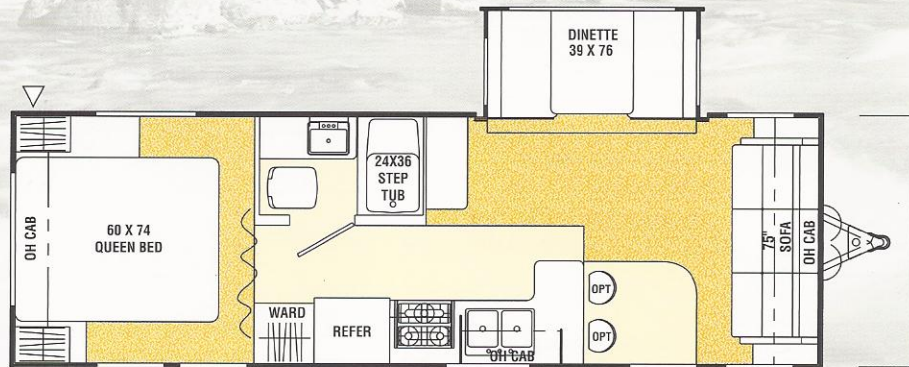


SOFA OPT. (I.P.O. GAUCHO)



△ FRONT WINDOW OPT.

**249QB**



△ FRONT WINDOW OPT.

**275DS**



*Indicates Carpeting*



*Indicates Outside Storage Location*



# 2003 Captiva Travel Trailer Specifications

## Travel Trailer Specifications

	199DB	249QB	275DS	277TBS	293TB	295FKS	296KS
<b>Base Weight</b>	3,078	3,559	4,111	3,995	4,137	4,590†	4,343
GVWR (lbs.)	5,180	5,970	6,370	6,190	6,240	6,545†	6,210
Carrying Capacity	2,102	2,411	2,259	2,195	2,103	1,955†	1,867
Hitch Weight	380	470	650	470	540	545†	490
Axle Weight	2,698	3,205	3,461	3,525	3,597	4,045†	3,853
Interior Height	76"	76"	76"	76"	76"	76"	76"
Exterior Height*	8'9"	8'9"	8'9"	8'9"	8'9"	8'9"	8'9"
Exterior Length	21'8"	25'2"	27'11"	27'11"	30'11"	30'11"	30'11"
Exterior Width	7'10"	7'10"	7'10"	7'10"	7'10"	7'10"	7'10"
Hitch Pin Height	18"	18"	18"	18"	18"	18"	18"
Sleeping Capacity	4/5	6	6	8	8	6	6
Fresh Water Capacity (gal.)	29	29	29	29	29	29	29
Waste Water Capacity (gal.)	28	28	28	28	28	28	28
Grey Water Capacity (gal.)	32	32	32	32	32	32	32
Water Heater Capacity (gal.)	6	6	6	6	6	6	6
LP Gas Capacity (lbs.)	40/60	40/60	40/60	40/60	40/60	40/60	40/60
Furnace Rating (x1,000) BTU	20	25	25	25	25	25	25
Tire Size	ST205/75R14B	ST205/75R14B	ST205/75R14B	ST205/75R14B	ST205/75R14B	ST205/75R14B	ST205/75R14B

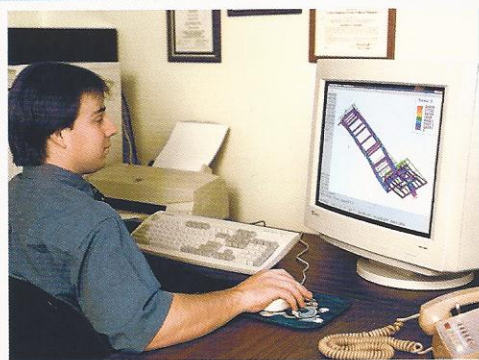
\*Add 6" for Roof Air Conditioner † = Estimated

**Base Weight:** The weight of the unit with no fluids, cargo, optional equipment or accessories.

**GVWR (Gross Vehicle Weight Rating):** The maximum permissible weight of the unit, including the Base Weight plus all fluids, cargo, optional equipment and accessories. For safety and product performance, do not exceed the GVWR.

**Carrying Capacity:** The difference between the Base Weight and the GVWR. This is the amount of weight available for all fluids, cargo, optional equipment and accessories. The actual "loaded" weight will depend on the equipped unit and the owner's individual choice of cargo, etc.

All information contained in this brochure is believed to be accurate at the time of publication. However, during the model year, it may be necessary to make revisions and Coachmen reserves the right to make all such changes without notice, including changes in prices, colors, materials, equipment and specifications, as well as the addition of new models and the discontinuance of models shown in this brochure. Therefore, please consult with your Coachmen dealer and confirm the existence of any materials, design or specifications that are material to your purchase decision.



## Engineering

At Coachmen RV, we utilize and rely on advanced computer technology to design and engineer a reliable and safe vehicle for you and your family. Finite Element Analysis helps evaluate structural integrity of components and systems quickly and efficiently. 3-D model simulations and numerous other process and software systems are also used in the design and development of Coachmen recreational vehicles to build the quality and reliability that you expect from Coachmen.

# 2003 Captiva Travel Trailer Standard Features & Options

## Captiva Travel Trailer Standard Features

### INTERIOR AND DECOR

New Shine Oak Cabinets  
Linoleum Flooring Throughout  
Mini Blinds Throughout  
Radius Windows – Safety Glass  
Gaucho (249QB, 293TB)  
Jack Knife Sofa (275DS, 277TBS, 295FKS, 296KS)  
Dinette  
TV Antenna Ready  
Cable TV Jack  
LP Leak Alarm  
Techwood® Drawers  
Fire Extinguisher  
Smoke Detector  
Mortise & Tenon Cabinet Doors  
Decor Glass in Overhead Cabinet Doors (except 199DB)

### GALLEY

Microwave Ready  
3-Burner (Hi Output) Range Top  
Power Range Hood  
Flush Mount, Large Single Door  
Refrigerator  
Monitor Panel

Composite Double Bowl Sink

Silverware Drawer

### SLEEPING

Double Bed (199DB, 277TBS, 293TB)  
Queen Bed (249QB, 275DS, 295FKS, 296KS)  
Bunk Beds (277TBS)  
Twin Bed w/ Bunk Above (293TB)

### ELECTRICAL/HEATING/ AIR CONDITIONING

GFI Circuit  
Outside Receptacle GFI  
Patio Light  
LP Light  
Double 20 LB LP Bottles w/Auto Change-Over  
20,000 BTU E.I. Furnace (199DB)  
25,000 BTU E.I. Furnace (Except 199DB)  
Speakers and Wiring for Radio  
12V Outlets

### BATH AND WATER

Marine Toilet  
Power Bath Vent  
6-Gallon Gas Water Heater

Water Heater By-Pass Valve

Demand Water Pump

Decorative Bath Hardware

Medicine Cabinet

### EXTERIOR/CONSTRUCTION

White Framed Windows  
Rigid Insulation (Walls/Floor)  
Fiberglass Insulation (Roof)  
Gutter Rail with Awning Rail  
Single Entry Step  
Dead Bolt Lock  
Radial Tires  
Rally Wheels  
Pass Through Storage  
Galvanized Wheel Wells  
Break Away Switch  
Rubber Roof  
Retractable Stabilizer Jacks (Std. on Slide Out Units)  
Filon® Fiberglass Sidewalls  
Manual Crank Out Slide Mechanism (275DS)  
Acme Screw Slide Mechanism (277TBS, 295FKS, 296KS)  
Norco Lightweight Sectional Frame  
Aluminum Cage Construction



*Make it Personal!*

Select from the **Optional Equipment** listed here to build your Captiva Travel Trailer your way.

- 3-Burner High Output Range w/ oven (except 277TBS, 296KS) (13 lbs.)
- Heated Enclosed Holding Tanks (15 lbs.)
- Pull Out Storage Tray (31 lbs.)
- Two Bar Stools (275DS) (10 lbs.)
- Space Saver Sleeper IPO Twin Bed (293TB) (7 lbs.)
- Double Bunks (293TB)
- Bunk Over Double Bed (199DB) (21 lbs.)
- Jack Knife Sofa (249QB, 293TB) (75 lbs.)
- Satellite TV Antenna System (22 lbs.)
- Range Cover (except 277TBS, 296KS) (10 lbs.)
- Convection Microwave Oven (47 lbs.)
- 6-Gallon E.I. Water Heater (1 lbs.)
- Tinted Safety Glass – Radius Windows (0 lbs.)
- LP Bottle Cover (13 lbs.)
- Electric Slide Room (277TBS, 296KS) (5 lbs.)
- CSA Upfit (0 lbs.)
- Owners Information Package (5 lbs.)
- Convenience Package (Rechargeable Wall Mount Flashlight and Rechargeable Wall Mount Hand Held Wet/Dry Vac) (8 lbs.)

†Weights are approximate

\*Paradise Package options may be purchased individually.  
\*\*See your Coachmen dealer for Paradise Package incentives.

## PARADISE PACKAGE

- Bedspread & Shams (23 lbs.)
- Partial Carpet w/Pad, Living Room & Bedroom (Except 199DB) (15 lbs.)
- Innerspring Mattress (23 lbs.)
- TV Antenna (15 lbs.)
- 12V AM/FM CD Stereo (10 lbs.)
- Flush Mount, Double Door Refrigerator (11 lbs.)
- Microwave Oven (43 lbs.)
- 6-Gallon Gas/Elec. Water Heater (2 lbs.)
- One-Piece ABS Tub Surround (17 lbs.)
- Outside Shower (2 lbs.)
- Skylight (Except 199DB) (2 lbs.)
- Front Window w/Stone Guard Awning (24 lbs.)
- 13,500 BTU Ducted Roof Air (Non-Ducted 199DB) (112 lbs.)
- Double 30# LP Bottles w/Auto C/O (14 lbs.)
- Spare Tire Kit (50 lbs.)
- Ladder (8 lbs.)
- Retractable Stabilizer Jacks (199DB, 249QB, 293TB) (26 lbs.)
- Patio Awning (94 lbs.)
- Sink Covers (5 lbs.)

# Take a closer look at Coachmen Quality & Construction

**1** All Captiva travel trailers feature **Alumicage™** construction. This lightweight, corrosion resistant, aircraft grade aluminum material is utilized throughout the roof and walls for superior strength and ultra light weight.



**2** The flush mount front window awning is aerodynamic and provides for a clean exterior appearance.

**3** Pass through storage is standard on most models for maximum exterior storage.



**4** The lightweight **NORCO™** sectional frame is fastened together with "huck" fasteners (the same fasteners as used on the Hummer).

**5** Arched aluminum roof trusses offer outstanding strength and durability.


**6** We use only radius clamp ring windows, which have no exterior fasteners or screw covers. We seal our windows with butyl-encapsulated foam for years of trouble free use.

**7** Seamless Weyerhaeuser Structurwood Floors eliminate squeaks and create a floor that is

stronger than conventional plywood. It is also backed with a 25 year Weyerhaeuser component warranty.

**8** **Torflex™** axles with independent suspension and electric brakes on all wheels, along with automotive studded hubs and lug nuts make for an easily towable unit.

**9** Seamless rubber roofs are crowned to allow controlled water run-off, which helps prevent leaks.

**10** The Coachmen **Even Cool™** air conditioning system utilizes  AMOCO insulated ductwork with radiused


corners to provide for maximum cooling efficiency (N/A 199 DB).

**11** LP tanks with automatic changeover are standard equipment on all Captiva's.

**12** Convenience lights are strategically located for maximum exterior visibility.

**13** All roof openings are double sealed with butyl tape and a self leveling adhesive for a superior water tight seal.

## Additional Value Added Construction Features

- We insulate around the refrigerator to improve operating efficiency and prolong the trouble free life of the refrigerator.
- Jalousie bedroom windows tilt out design lets the window be open for ventilation even when it is raining outside.
- Wood cabinets are screwed (not stapled) to galvanized backers in the sidewalls so they stay secure and won't pull free.
- All outside storage doors have latches to hold the door open, which makes access to the storage areas even easier.
- **DURATUBE™** copper LP lines ensure a tight seal and years of corrosion free use. 
- A rain gutter channels water towards the ends of the coach where a spout directs the water out away from the side of the unit.
- We believe in our products and back them with a two-year structural and major components manufacturer's warranty.

# TAKE TIME TO DISCOVER THE COACHMEN STORY

## Services & Tools

- **Industry Leading "Buckstopper" Warranty** – Coachmen's exclusive Buckstopper Limited Warranty provides one-year coverage on most parts, components and appliances. Coachmen stands behind their product and is supported by a network of over 300 service centers.

- **Two Year Structural & Major Components Manufacturer's Warranty** – Coachmen provides a two-year structural and major components manufacturer's warranty, along with a complete written Warranty Summary Guide, for your peace of mind.

- **Comprehensive Owners Information** – For your convenience we offer published materials on key equipment and options, as well as information pertaining to the function of important components. We also offer a true **Trouble Shooting & Maintenance Guide** for the simple answers to frequently asked questions.

- **Toll Free Service Numbers** – These toll free phone numbers provide you with direct access to a Coachmen RV Service Representative.



- **Dealer Support Tools** – Coachmen makes sure that their dealers are well equipped and trained to service your needs with: Systems Manuals, PDI Manuals, Electronic Parts Catalogs, Coach Link "On-Line" Electronic Dealer Communication System, and continual service training.

- **Service Support Center Web Site** – Coachmen provides you access to key information 24-hours a day through the Internet. On-line you can find a Service Dealer Locator, Maintenance Information, Trouble Shooting Information, Product Warranty Information, Customer "E-Assistance", Frequently Asked Questions (FAQ's), and Publications ordering dating back to 1972 models.

- **Priority Parts Ordering** – Coachmen provides a program for overnight parts shipment in critical repair situations.

- **Ultimate Satisfaction First** – Coachmen cares about their customers. We reach out through our customer surveys to gather valuable information, suggestions and feedback regarding your purchase and ownership experiences. Listening to our customers helps us achieve your "Ultimate Satisfaction First".



## Hidden Quality Makes the Difference

Coachmen RV is committed to providing a high quality, reliable, and innovative product. We know that quality extends far beyond the "glitz" of a recreational vehicle and often, the most important aspects of quality are hidden in the design and construction of the coach. That's why Coachmen designs quality into our products up-front, through computer aided design and analysis software. This helps to assure appropriate weight distributions, structural integrity, alignment of the various parts and components and overall reliability of the design.

Our attention to quality does not stop on the computer screen, as all of our major product designs undergo rigorous road tests, rain booth testing, complete compliance audits for all codes, standards and safety related items, and comprehensive product audits.

Coachmen designs, builds and markets a superior product, for reasons that may not always be easy to see, however are very easy to appreciate down the road. Our hidden quality equates to high value, which can be critical to your long-term satisfaction.

## Coachmen Caravan Camping Club

Coachmen Caravan Camping Club is your ticket to making friends for life. Share old stories and make new, in the company of fellow Coachmen Caravan members. With the purchase of a Coachmen RV, you are invited to join the nation's largest manufacturer sponsored RV club with a **FREE 1st year basic membership or discounted Platinum membership**. As part of the Coachmen Caravan family, you will receive incredible membership benefits that will help to ensure your safety and enjoyment throughout your RV experiences. Enjoy your Coachmen RV more with the Coachmen Caravan Camping Club.



## Leader to the Great Outdoors

*Coachmen RV Company is a proven leader in the RV Industry with over 38 years of experience. We are dedicated to providing a high quality, reliable, and innovative product backed by high quality service support. Our mission is simple ... to meet and exceed your expectations and to make your total RV experiences memorable and enjoyable!*

**Coachmen RV Company ... A Great Product, A Great Company, A Great Name!**  
**Coachmen RV Company ... "Leader to the Great Outdoors"**

JERRY'S TRAILERS & CAMPERS  
2601 S. 13th St.  
Norfolk, NE 68701  
(402) 371-1306



Visit our website at: [www.coachmenrv.com](http://www.coachmenrv.com)

Coachmen Recreational Vehicle Company, LLC  
P.O. Box 30, Middlebury, IN 46540 • P.O. Box 948, Fitzgerald, GA 31750

