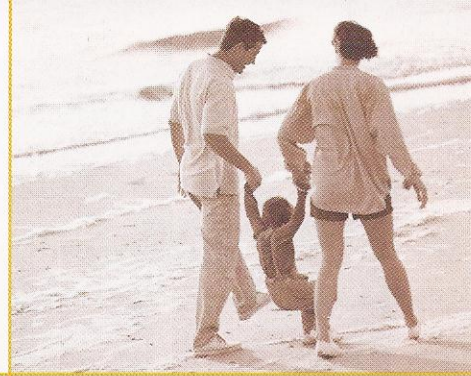




Bantam

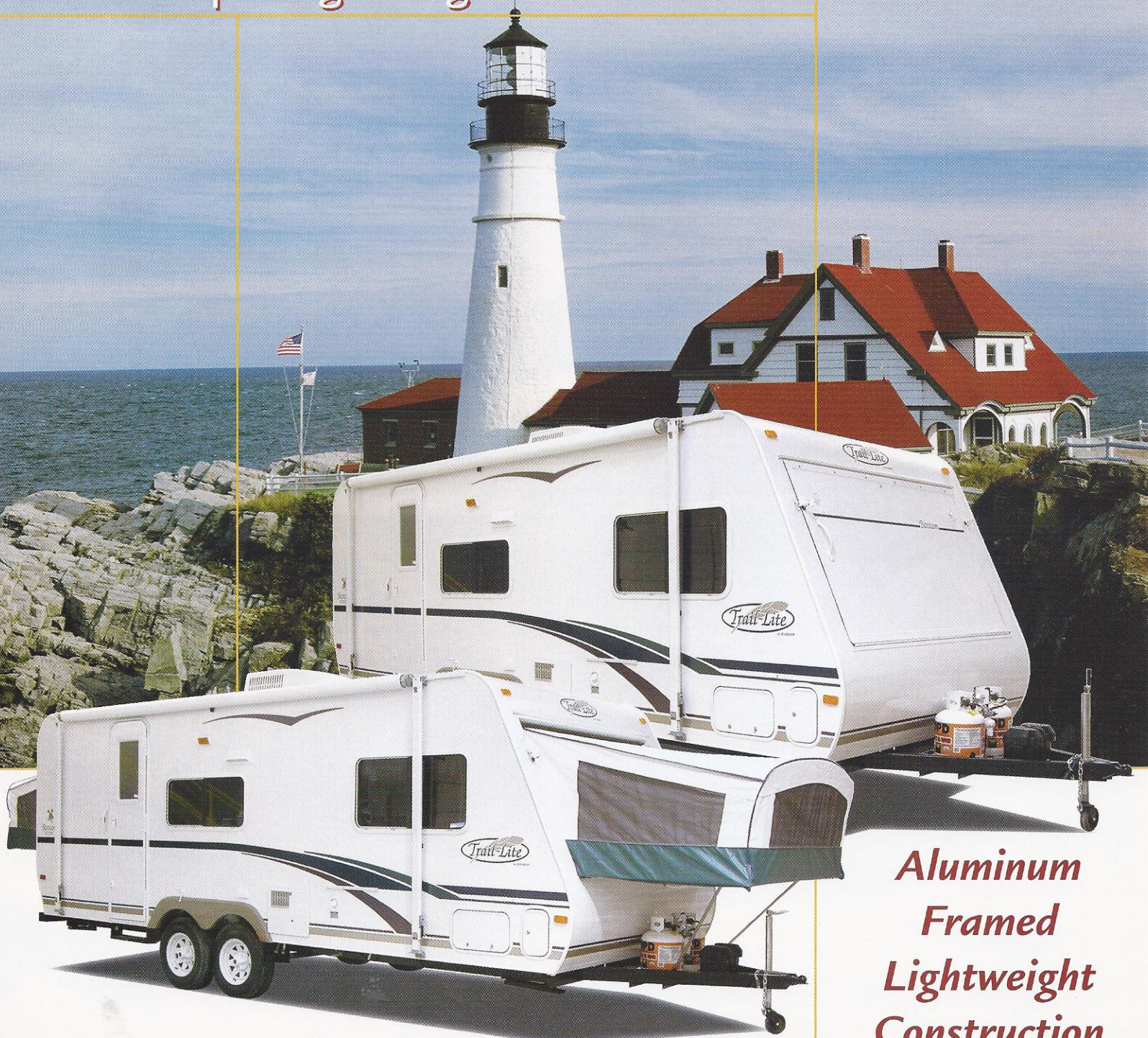
by R-Vision

The Original Expandable Travel Trailer



US Patent Nos. 6135539
5992920

Super Lightweight Travel Trailers



**Aluminum
Framed
Lightweight
Construction**

Nation's #1 Selling Ultra Lite



Model B823SB Interior



The re-designed Bantam series of expandable light-weight towables from R-Vision is the perfect choice for families that love to spend quality time together camping! With loads of standard features and a tremendous amount of interior spaciousness provided by the expandable bed ends, the Bantam offers everything you've been looking for in a lightweight recreational vehicle. This model features an electric slide-out room for even more interior living space, while conveniently located storage space can be found throughout the coach.

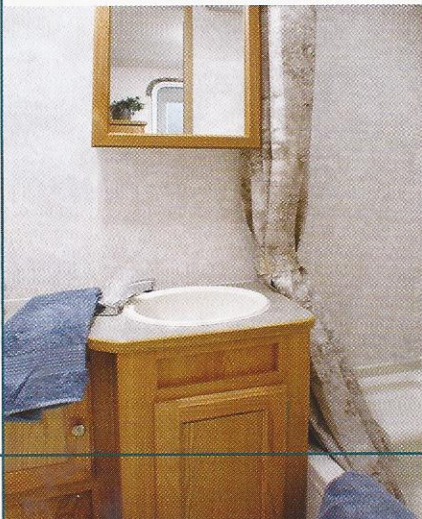
LIGHTWEIGHT EXPANDABLE LIVING

Each Bantam expandable lightweight travel trailer features fully welded aluminum construction with block foam insulation and smooth fiberglass exterior for longer-lasting strength and durability. Our unique fold-out beds easily expand to increase the sleeping area, while the towing length remains remarkably short.

Choose from a number of Bantam floorplans, ranging in size from 17' to 23', each designed with you in mind, and offering luxurious amenities such as solid oak cabinet doors, reversible dinette and bunk cushions featuring durable designer fabrics, no-wax flooring, mini-blinds with window valances and more!

You'll be impressed with the spaciousness in the Bantam bath, complimented by a large sink base cabinet, mirrored medicine cabinet, and a surprisingly roomy shower or tub (depending on the model).

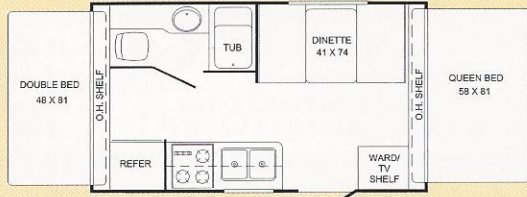
The kitchen in this Bantam lightweight model features more than enough room for all of your meal preparation needs. Brushed metal appliances add a touch of class, while the overhead and base cabinet storage are plentiful. Near the entrance door, you will find a large wardrobe to hold all your clothing items.



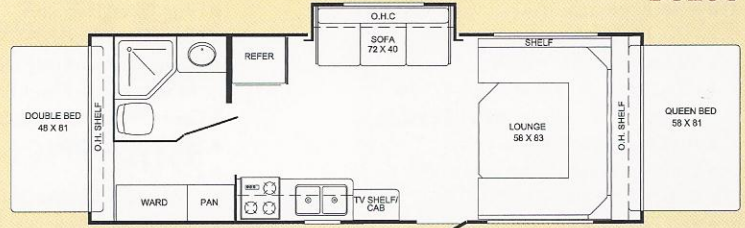
Model B823SB

FLOORPLANS

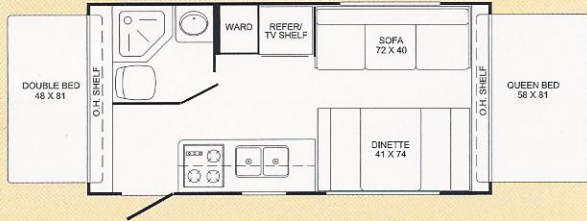
B817B



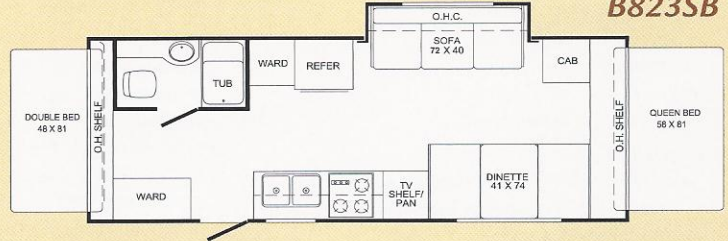
B823S



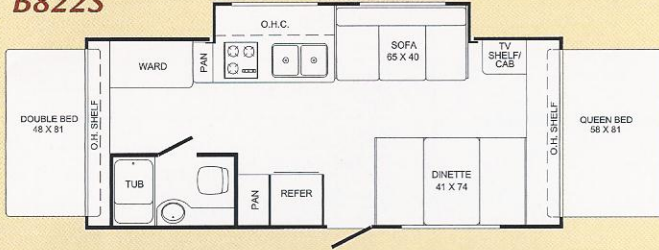
B819



B823SB



B822S



SPECIAL FEATURES

EXPANDABLE BEDS

Unique fold-out beds easily increase sleeping area while towing length remains remarkably short

KEY LOCKED BED ENDS

AERODYNAMIC FRONT PROFILE

Less wind buffeting; stable towing

CLEAN BOND PAINTED CHASSIS

Tough, hard, corrosion resistant finish

FIBERGLASS EXTERIOR SKIN

Easy to maintain; resistant to scratches, dents & dings

LAMINATED ALUMINUM FRAMED CONSTRUCTION

Superior strength; lightweight; exceptional durability; 2 Year Warranty

EXTRA LOW CENTER OF GRAVITY

Stable, safe towing with today's downsized tow vehicles

THICK WALL CONSTRUCTION

50% thicker than most other light weights; more insulation; much stronger

INDEPENDENT TORSION SUSPENSION SYSTEM W/RADIAL TIRES

Unsurpassed towing stability

RUBBER ROOF

Low maintenance "Next Generation" product



SPECIFICATIONS



Bantam

Appliances/Equipment

- Dometic Refrigerator
- 3 Burner Range Top
- Power Range Hood w/Light
- Six Gallon Water Heater
- Furnace (16,000 BTU) 17'-19'
- (18,000 BTU) 22's-23's
- Air Conditioner Ready
- Demand Water Pump
- Copper Lp Gas Lines
- PEX Water Lines
- Microwave Ready

Bath

- ABS Shower Pan or Tub
- Shower Curtain
- Thetford Toilet
- Power Roof Vent
- Adjustable Shower Head

Construction

- Welded, Aluminum Framed, Laminated Roof with 1-1/2" Polystyrene Block Foam Insulation (R-7) Rubber Roof
- Welded, Aluminum Framed, Laminated Walls with 1-1/2" Polystyrene Block Foam Insulation (R-7) Filon Fiberglass Exterior Covering
- Welded, Aluminum Framed, Laminated Floor with 1-1/2" Polystyrene Block Foam Insulation (R-7)
- Clean Bond Painted Tubular Steel Chassis
- Framed, Braced and Wired for Air Conditioning
- Butyl Tape Sealant on All Exterior Seams

Electrical

- Patio Light with Amber Lens
- Ceiling Lights
- 120 Volt GFI Protected Circuit(s)
- 120 Volt Breaker Panel
- Outside, 120 Volt Receptacle
- 30 Amp, 28' Power Cord-Detachable
- 55 Amp, Whisper Quiet Converter w/Charger
- Battery Tray
- Pre-Wired For Air Conditioner
- Per-Wired For Microwave

Exterior

- Rubber Roof
- Filon Fiberglass Skin
- Clean Bond Painted Chassis
- Radius Corner Entry Door with Screen, Flush Mount Latch, Dead Bolt Lock
- Generous Outside Storage Compartment
- Self-Storing Step
- 20# LP Tanks
- 4 Stabilizer Jacks - Crank Down Type
- Liftco Screw Drive Self-Locking Power Slideout Mechanism on Slide Models w/5 Year Warranty, Operates from Inside
- 2-5/16" Coupler

Interior

- Large Galley Window
- Reversible Dinette & Bunk Cushions
- Mini Blinds w/Valances Throughout
- No-Wax Vinyl Flooring
- "Euro Look" Overhead Cabinet with Under Cabinet Shelf
- Oak Framed, Mortise and Tenon Cabinet Doors
- Roof Vent (Deleted with Optional Air Conditioning B817B)
- Inside/Outside Table on Some Models
- Laminated Galley Counter/Table Tops

Running Gear

- 14" Radial Trailer Tires
- White Spoke Wheels
- 10" Electric Brakes on All Wheels
- Independent torsion Suspension System, Rubber Ride

Safety

- Breakaway Switch
- Fire Extinguisher
- Smoke Detector
- LP Detector
- Safety Chains
- Ground Fault Protected Circuit(s)
- Dead Bolt Door Lock

**General Warranty Information

Rubber Roof	12 Years
Fiberglass Skin	2 Years
Clean Bond Painted Chassis.	1 Year
Structure	2 Years
Domestic Appliances	3 Years
Atwood Appliances	2 Years
Liftco Slideout Mechanism	5 Years
Suspension System.	5 Years
Gencore Weathershield Tent.	5 Years
General Camper Coverage.	1 Year

***Refer to specific written warranty statement*

Options	Approx. Wt. (lbs.)
Air Conditioner 13,500 BTU	104
AM/FM/CD Player	4
TV Antenna w/Cable	5
Awning, A&E	40
Spare Tire/Wheel/Carrier	35
Microwave Oven	30
Oven	30
Tub Surround (N/A B819, B823S)	10
Sink Cover	5
Stove Cover	5
TV Antenna/Cable	6
Outside Grill	15
Outside Shower	3
Systems Monitor Panel	1
Outside sliding Storage Drawer	36
DSI Water Heater	1
2 Door Refrigerator (N/A B817B, B819)	15

	B817B	B819	B822S	B823S	B823SB
Length	17'10"	20'8"	23'4"	24'7"	24'7"
Width (w/o Awning)	96"	96"	96"	96"	96"
*Hitch Dry Wt. (Appr.)	255	321	441	346	308
*Axle Dry Wt. (Appr.)	2338	2664	3202	3198	3276
Total Dry Wt.	2593	2985	3643	3544	3584
Load Cap.	2147	2336	1798	1802	1724
GVWR	4740	5321	5441	5346	5308
Tire Size	ST205/75R14	ST205/75R14	ST205/75R14	ST205/75R14	ST205/75R14
Fresh Water Tank Cap.	30	30	30	30	30
Grey Water Cap.	30	30	30	30	30
Black Water Cap.	30	30	30	30	30

**Weights are approximate and based on standard features, optional equipment not included*



R-Vision, Inc.
 2666 S. Country Club Drive ■ Warsaw, IN 46580
 www.trail-lite.com

As R-Vision constantly strives to improve our product, all specifications listed in this informative brochure are subject to change without notice or obligation. Photos may show optional equipment which is not included in the purchase price of the unit. Test drive and review a current model on your dealer's lot today. 25M CDS 06/03

Your Dealer

JERRY'S TRAILERS & CAMPERS
 2601 S. 13th St.
 Norfolk, NE 68701
 (402) 371-1306