

Wildcat

BY FOREST RIVER

TRAVEL TRAILERS
AND FIFTH WHEELS

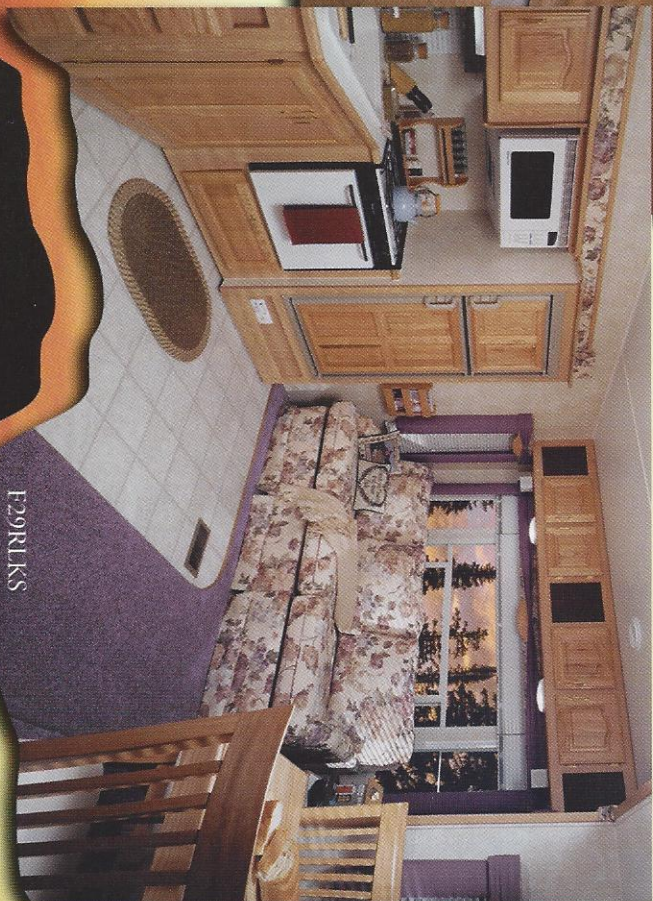




E29RLKKS

Put the worries of the work-a-day world behind you and enjoy a family retreat filled with adventure. That's what Wildcat by Forest River is all about.

Wildcat's welcoming interior is a comforting blend of function and style with unique design features such as this fully equipped slide-out kitchen.



E29RLKKS

Wildcat

BY FOREST RIVER

FFRHH WHEELS

An expanded line of new floor plans offers a variety of living arrangements and updated features that reflect the changing lifestyle of today's RVing families. Double slide-out models provide an amazing amount of living space for more comfort and convenience.

It's the extra touches, like storage space above the refrigerator and pots-and-pans drawer under the stove, that make the difference.



F27RL



F27RK

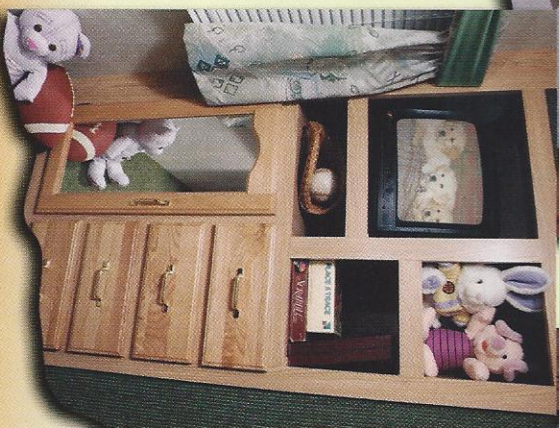
Storage space is a top priority throughout every unit. Even the bathroom contains an extra large linen closet.



F28BH



Standard in all models, the entertainment center features our exclusive surround sound along with AM/FM radio, CD and cassette player, and remote control.



The wardrobe doubles as an entertainment center in the children's bedroom.

FIRSTH WHEELS

F28BH/T29BHHS



Family-oriented floor plans provide an abundance of roomy living space and storage areas. This two-bedroom model features a rear children's bedroom with bunk beds.

Wildcat

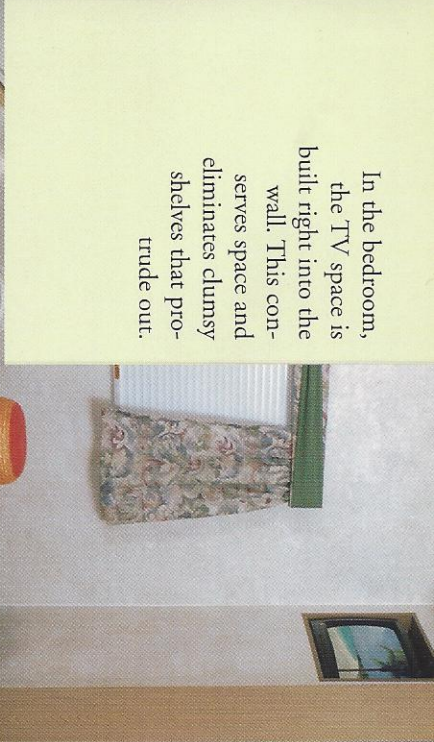
BY FOREST RIVER



T26FBS

Wildcat's new line of travel trailers offers the same level of comfort and convenience as our fifth wheels. This model features a roomy rear bathroom with a fully enclosed shower stall and even a laundry chute.

Wildcat travel trailers are steeped in charm. A full size entertainment center and wall clock highlight the living area while the bedroom provides sleeping comfort with a queen size bed replete with color matched bedspread.



In the bedroom, the TV space is built right into the wall. This conserves space and eliminates clumsy shelves that protrude out.



T26FBS

Millcreek

BY FOREST RIVER

| SPECIFICATIONS | 26FBS | 29BHBS | 27RK | 27RL | 28BH | 29RLKS |
|--------------------------|-----------|-----------|-----------|-----------|-----------|-----------|
| DRY WEIGHT* | 6245 | 6995 | 6870 | 6810 | 7650 | 8030 |
| GVWR | * | 10,980 | 11,320 | 11,070 | 11,260 | 11,430 |
| CARRIING CAPACITY | * | 3199 | 3530 | 3590 | 2750 | 2633 |
| HITCH WEIGHT | 553 | 711 | 1160 | 910 | 1100 | 1270 |
| EXTERIOR LENGTH | 28' 8" | 31' 5" | 28' 7" | 28' 7" | 30' 7" | 30' 7" |
| EXTERIOR WIDTH | 8' | 8' | 8' | 8' | 8' | 8' |
| EXTERIOR HEIGHT WITH A/C | 10' 10" | 10' 10" | 11' 10" | 11' 10" | 12' | 12' |
| UPPER BEDROOM HT. | N/A | N/A | 6' 4" | 6' 4" | 6' 4" | 6' 4" |
| FRESH WATER CAPACITY | 43 GAL. | 43 GAL. | 43 GAL. | 43 GAL. | 43 GAL. | 43 GAL. |
| BLACK WATER CAPACITY | 37 GAL. | 37 GAL. | 37 GAL. | 37 GAL. | 37 GAL. | 37 GAL. |
| GRAY WATER CAPACITY† | 37 GAL. | 74 GAL. | 74 GAL. | 74 GAL. | 74 GAL. | 74 GAL. |
| MASTER BED DIMENSIONS | 60" X 74" | 60" X 74" | 60" X 74" | 60" X 74" | 60" X 74" | 60" X 74" |
| BOOTH DINETTE DIMENSIONS | 44" WIDE | 44" WIDE | 44" WIDE | 44" WIDE | 44" WIDE | 44" WIDE |

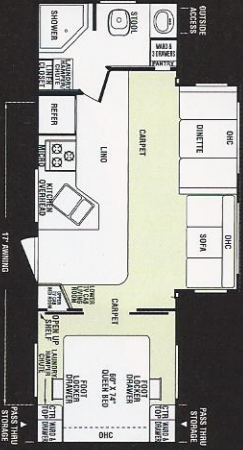
6 lug 5200# E-Z Lube Axles - Standard all models

* Estimated weights at time of publication without options.

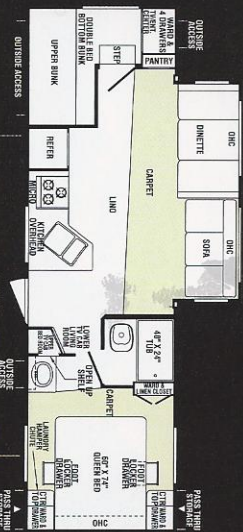
† 2 tanks - 37 gal. each.

Model number of any particular unit does not necessarily reflect the overall length of the unit itself.

TRAVEL TRAILER FLOOR PLANS

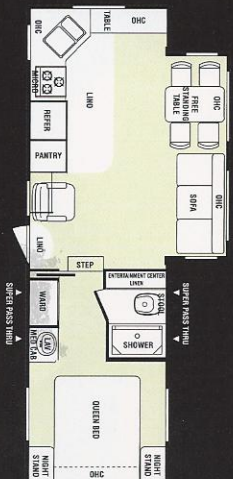


26FBS



29BHBS

FIFTH WHEEL



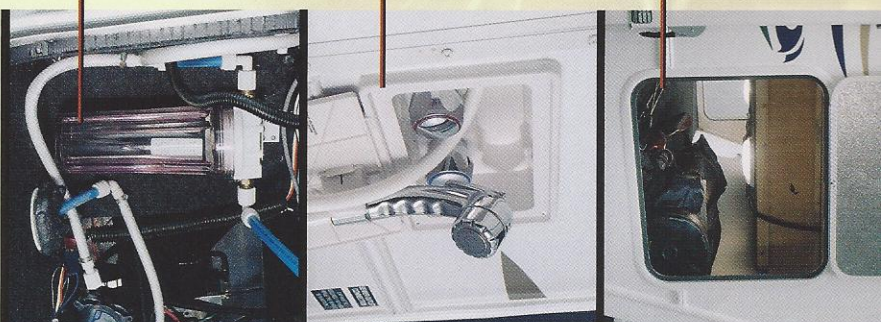
27RK

Stow lots of extra gear in the exterior pass-through storage compartments.

all travel trailers

Hand-held, outside shower option provides quick clean-ups.

The water filtration system ensures clean, safe drinking water.



INTERIOR

KITCHEN

- Pantry by refrigerator (where applicable)
- Single lever faucet
- Solid oak self-edged counter tops throughout
- Residential style Armstrong "Toughguard" linoleum
- Residential carpet bars
- Storage above refrigerator
- Fluorescent lighting in kitchen
- Paper towel holder
- Extra large dual acrylic sink w/cover
- Spice rack w/knife holder
- Raised oak cathedral style doors
- Pots & pans drawer under stove
- Residential style drawer guides
- 6 gallon gas/electric DSL water heater
- Toe kicks w/wrinkle light runners

LIVING ROOM

- Decor mirror
- 44" dinette pedestal table
- Slider windows at both ends of the slide-out
- Overhead cabinets in the slide-out
- 5 colors to choose from
- Flush-floor Dewald hydraulic slide-out w/manual override
- Forest River exclusive 6 + 2 stereo surround sound w/AM/FM, CD/cass. player w/remore

Wall clock

- Full entertainment center
- Magazine rack
- Oak grab handle bc entry door
- Extra large picture window at dinette

BATHROOM

- Laundry hamper/shoot (fifth wheels)
- Extra large lavatory sink
- 12" Fantastic Fan
- Fully built-in oak medicine cabinet
- Full ABS shower stall w/drape
- Extra large linen closet
- GFI recepts in bathroom
- Bi-fold door dividing bath from bedroom
- Laminated & insulated bathroom floor (FW only)
- Broom & dustrpan location (FW only)

BEDROOM

- Color matched bedspread
- Drawers in nightstands
- shirt closet next to bed
- Dropped deck for 6' 4" of standing room in front of bed (industry 1st in mid-profile) (FW only)
- Storage under queen bed
- Fully finished off bed base
- Foot locker drawers under queen bed (TT only)

EXTERIOR

Heated & Enclosed holding tanks

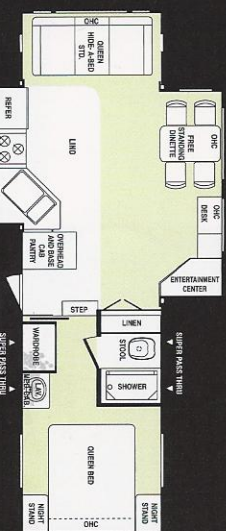
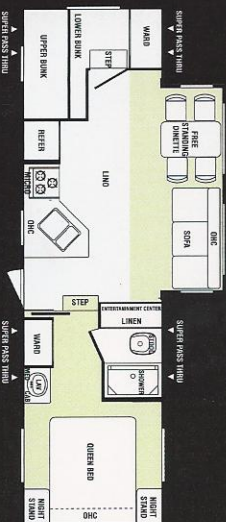
- E-Z open triple step
- Insulated & screwless radius baggage doors on sidewalls
- 110 electric outlet - door side
- White windows
- Molded ABS fender skirts
- Water heater by-pass
- Rain gutters w/down spouts
- One piece rubber roof w/12 year warranty
- 2" laminated, vacuum bonded, aluminum constructed side walls & slide room
- Dual 30# LP tanks mounted on each side of frame for weight distribution
- Heated under-floor fresh water tank
- 10,000 gal. water filtration system
- Patio light & hitch light
- Laminated & insulated bunk room floor
- Chrome bumper cover
- Extra large rolled side metal
- 3/8" full walk-on roof
- Custom upgraded graphics
- 5,200 lb. eazy lube axles on all models (FW only)
- Front ABS aerodynamic front cap (FW only)
- 225/75/R15 "D" rated tires (FW only)
- Front baggage pass-through door (FW only)
- Independent rubber-ride suspension (TT only)
- Molded fiberglass front end cap (TT only)
- 225/75/R15 radial tires (TT only)
- Extended & adjustable pin box (FW only)

OPTIONS

- 13.5 AC ducted
- Rear stabilizer jacks
- Front electric jacks
- Two scare lights
- Rear rack and ladder
- Solid oak refrigerator front
- Hide-a-bed/IPO sofa
- Swivel rocker
- Free-standing dinette w/4 chairs
- Folding assist handle
- Spare tire w/carrier and cover
- LP leak detector
- CSA
- CD, AM/FM w/cassette
- Water filter system
- Fantastic fan
- Market extension program
- Range cover
- Drawer under dinette
- 15.0k BTU ducted roof air
- Twin beds
- Outside shower
- Bi-fold shower door
- Awning
- Microwave
- TV antenna
- Sky/light
- Cable



FLOOR PLANS



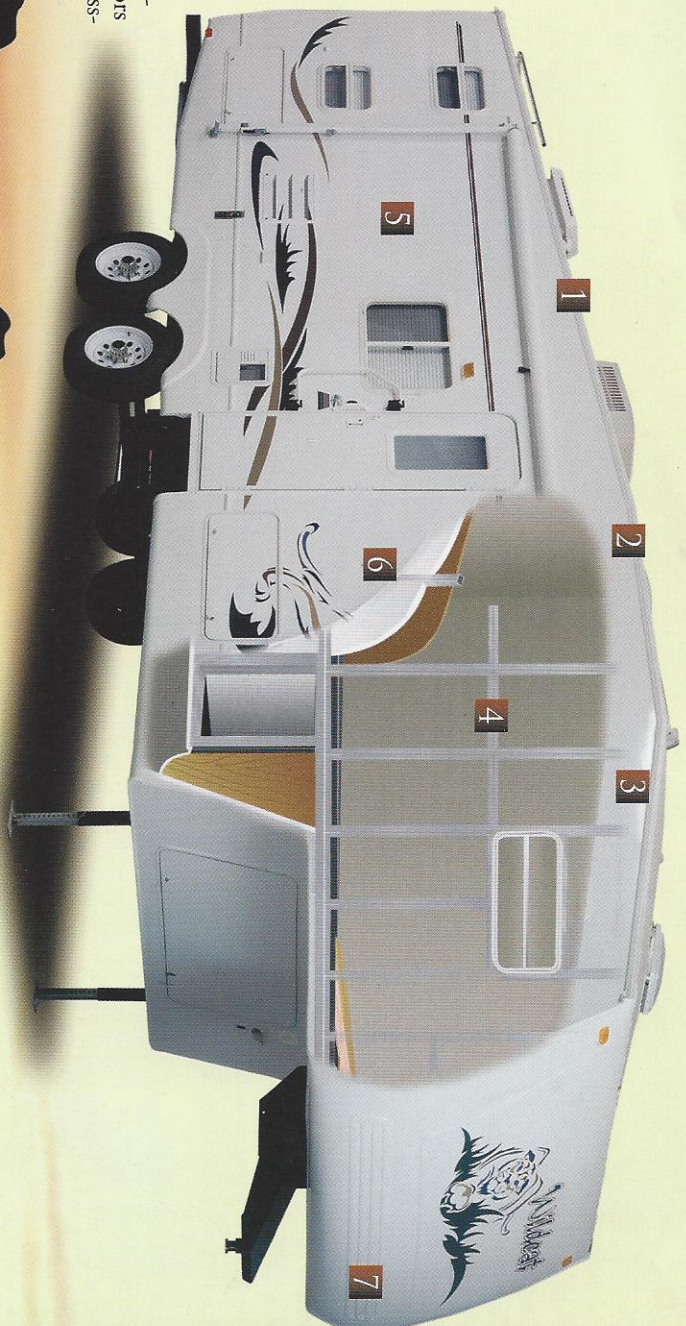
Wildcat

CONTINUOUS TAPERED ROOF TRUSS SYSTEM
PROVIDES BETTER WATER RUN-OFF

- 1 ONE-PIECE RUBBER ROOF
REDUCES NOISE AND HEAT
- 2 FULL WALK-ON 3/8 INCH ROOF DECKING
- 3 IN-CEILING A/C DUCTING
PROVIDES BETTER AIR DISTRIBUTION
- 4 ALUMINUM STUD FRAMINGS
- 5 SMOOTH LAMINATED
FIBERGLASS SIDEWALL PANELS
- 6 WELDED ALUMINUM FRAMED WALLS
WHICH ARE VACUUM-BONDED W/BLOCK FOAM
- 7 ABS AERODYNAMIC FRONT CAP



Insulated, screw-less baggage doors conceal huge pass-through storage areas.



Model F28BH Shown



FOREST RIVER, INC.

57475 CR 3 • Elkhart, IN 46517
Phone: 219-533-5934 • Fax: 219-533-6085
www.forestriverinc.com

YOUR AUTHORIZED FOREST RIVER DEALER:

JERRY'S TRAILERS & CAMPERS
2601 S. 13th St.
Norfolk, NE 68701
(402) 371-1306

The Two Forests of Forest River... Forming Relationships with Nature

Forest River, Inc. is helping to preserve America's wilderness areas for the use and enjoyment of our customers and future generations. With every Forest River recreational vehicle purchased, a tree will be planted in the buyer's name in one of America's national forests.



All illustrations and specifications contained in this literature are based on the latest product information at the time of publication. Forest River, Inc. reserves the right to make changes in prices, colors, materials, equipment and specifications at any time without notice and assumes no responsibility for any error in this literature. All units are shipped F.O.B. Elkhart, Indiana.
CONSULT YOUR LOCAL DEALER FOR WARRANTY INFORMATION



Printed on Recycled Paper

Forest River Cares