

2002

Sprinter™

You don't have to settle...





Imagine living in this spacious Sprinter 276 FWRLS Fifth Wheel, shown here in our stylish and rich Cranberry color scheme. The over-sized windows provide a panoramic view of your natural surroundings. The neo-angled kitchen countertop has an extension and the enlarged kitchen cabinets offer twice the storage space as competitive brands. No other brand at this price point offers the luxury, attention to detail, and convenience of Sprinter.



TAKE LUXURY ON THE ROAD AT A PRICE YOU CAN AFFORD

Greetings,

By utilizing our customer's wants, needs and desires as the foundation of our design, Sprinter has quickly become one of the top selling brands in America. Customers have returned time and time again to Sprinter, because of Sprinter's higher value, innovative floorplans, and array of features and amenities that were previously offered exclusively in high-line products.

Simply put, Sprinter offers more value for your dollar than any other brand in the recreational vehicle industry. Our goal is to carefully listen to you, the RV enthusiast, and incorporate much of your feedback into our products. As styles change and technology advances, we work to continuously make Sprinter the most comfortable, convenient, and relaxing RV on the road. We invite you to join the tens of thousands of satisfied Sprinter owners. Thank you for your consideration.

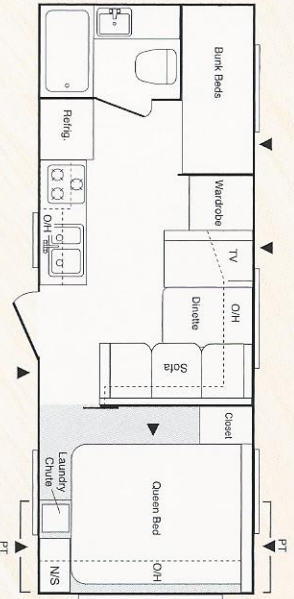
See you in the Great Outdoors,

General Manager

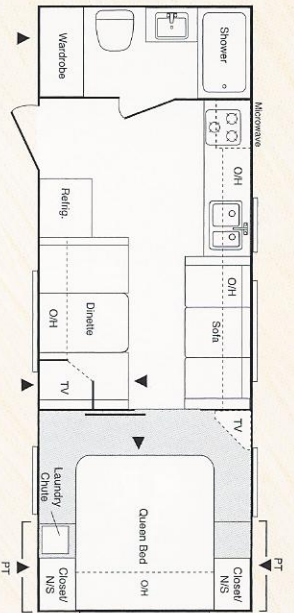


Above, Sprinter's 299 RLS floor plan in the Azalea color scheme shows the comfortable extra-large slideout room with flush floors. Notice the hardwood, raised panel cathedral-style overhead cabinets, the soft lines of the residential quality upholstery, the designer window treatments, and the attention to detail in the cabinetry of the entertainment center. We include both 12-volt and 110-volt lighting in all Sprinter slideouts. This allows you to camp wherever you want to go—and not be left in the dark.

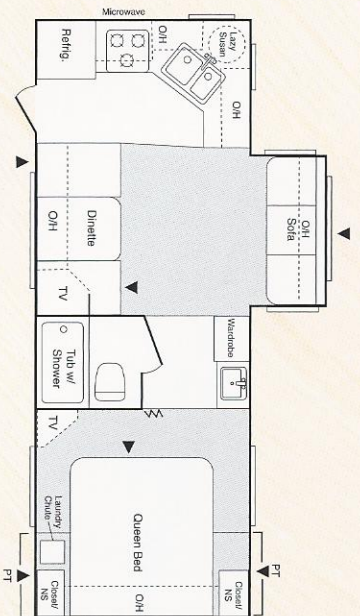
SPRINTER E-Z TOW TRAVEL TRAILERS



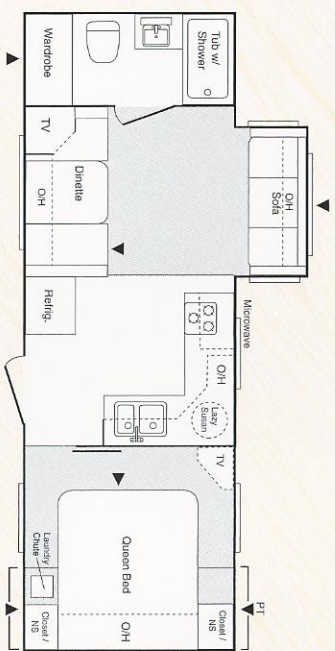
244 TB



248 RB



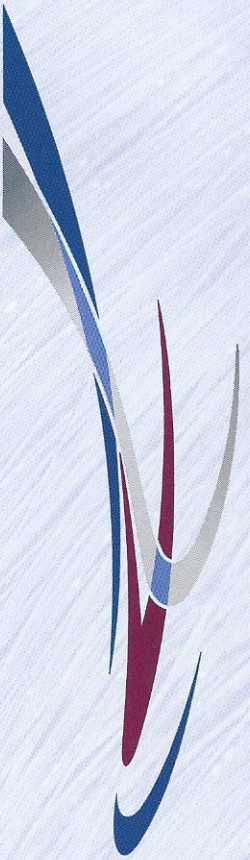
249 RKS



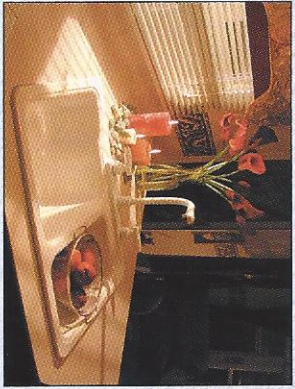
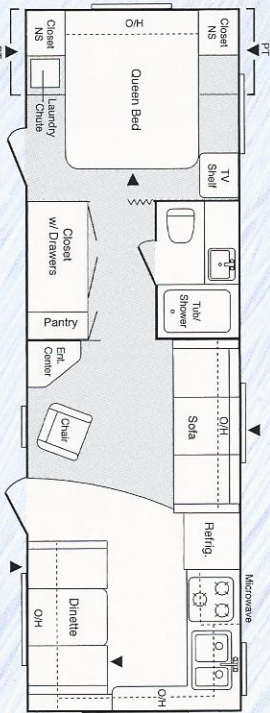
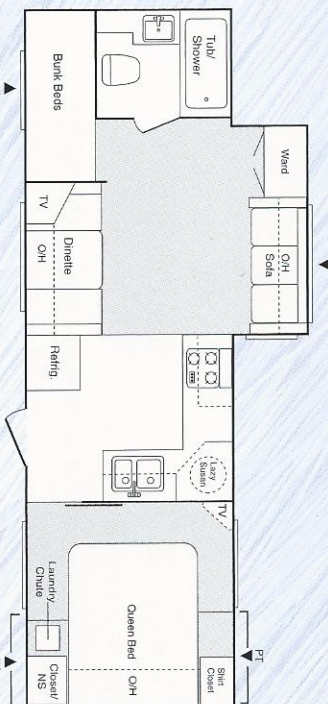
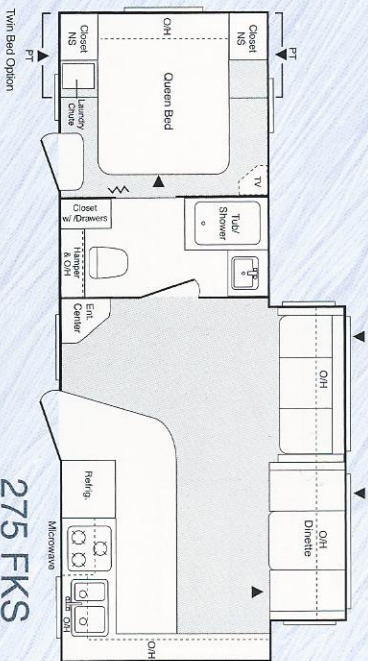
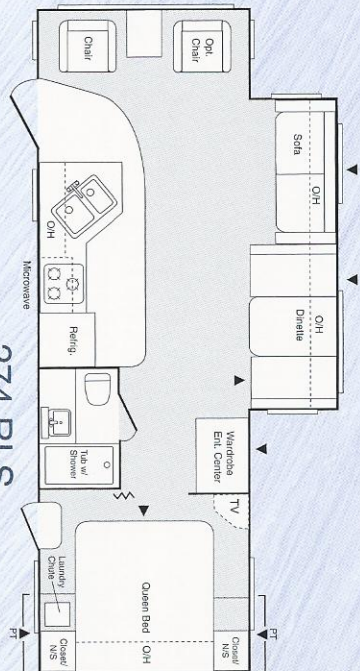
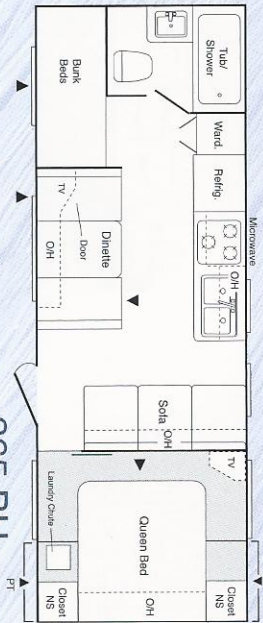
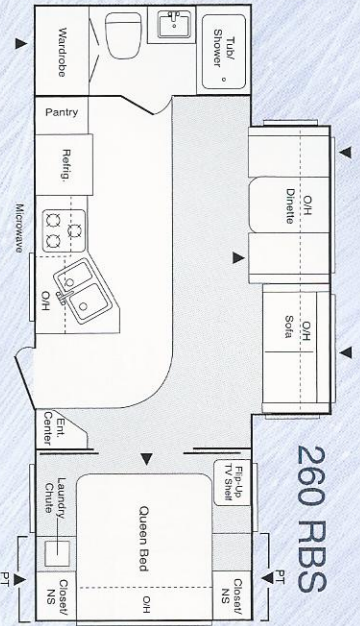
259 RBS

The 2002 Sprinter E-Z Tow has all of the features of our standard Sprinter. In addition, the profile is sloped to provide improved aerodynamics. The results—great space with E-Z towability. The name says it all, Sprinter “E-Z Tow.”

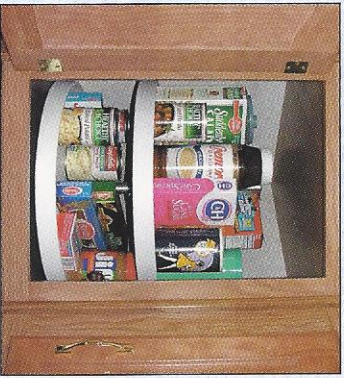
E-Z Tow	GVWR	Gross Dry Weight	Carrying Cap.	Hitch	Dry Axle Weight	Ext. Length	Ext. Width	Ext. Height (Top of A/C)	Fresh Water	Grey Water	Waste Water	LP Gas Cap.	Tire Size
244 TB	7640	4565	3075	640	4135	25' 6"	8'	10' 2"	45 gal	28 gal	24 gal	60	205/75R15
248 RB	7500	4625	2675	500	4440	26' 6"	8'	10' 2"	45 gal	28 gal	24 gal	60	205/75R15
249 RKS	7680	5740	1940	680	5260	26' 6"	8'	10' 10"	45 gal	28 gal	56 gal	60	205/75R15
259 RBS	7700	5940	1760	700	5520	27' 6"	8'	10' 10"	45 gal	24 gal	56 gal	60	205/75R15



2002 SPRINTER TRAVEL TRAILERS



Our residential 60/40 sink with matching designer high-spout faucet, so convenient for oversized pots and pans.



Lazy Susans maximize interior cabinet storage and make your supplies easy to reach.



Every Sprinter includes a coat rack conveniently located near the entrance door.

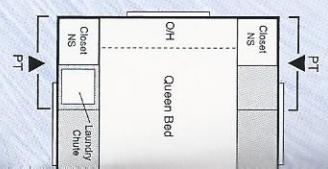
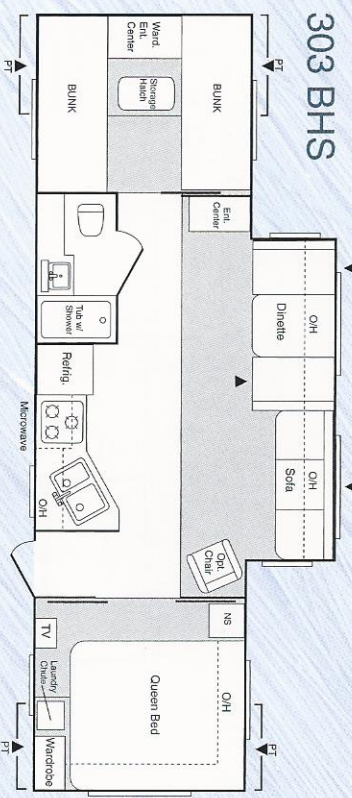
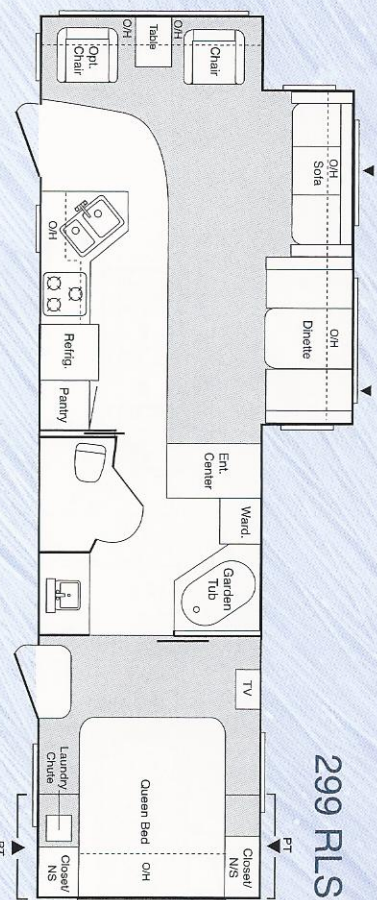
WITH YOUR COMFORT IN MIND, WE HAVE TAKEN SOME OF THE MOST CONVENIENT FEATURES OF HOME AND INCORPORATED THEM INTO THE SPRINTER.



SPRINTER TRAVEL TRAILERS

FEATURES YOU'LL FIND IN EVERY SPRINTER

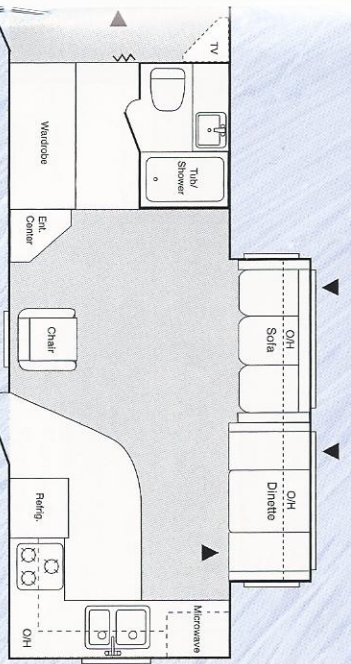
- All Ceilings Increased to 80"
- Enlarged Overhead Cabinets (More Storage)
- Upgraded Carpeting and Wallboard with Border
- Unique Laundry Chute or Clothes Hamper; Clothes Empty Into Outside Access Storage Area (Most Floorplans)
- Brass Coat Rack Near Entry Door
- Residential Kitchen Sink with Deep 60/40 Basins with High-Arch Faucet
- Lazy Susan Maximizes Cabinet Space
- Swing-Out Fifth Wheel Entry Handle
- Exterior Security Lights On All Fifth Wheels
- Pass-Through Storage In Gooseneck on All Mid-Profile Fifth Wheels
- Designer Interiors with Hardwood Raised-Cathedral Cabinet Doors and Drawer Fronts
- Tip-out Undersink Silverware Storage
- 45" Dinette in Most Slideouts for Extra Sleeping Room and More Comfortable Dining
- Full-Function Monitor Panel in All Kitchens
- Residential-Style Door Latches and Six-Panel Doors
- Large Skylight Over Every Shower and Tub
- Deluxe Mastercraft® Residential-Quality Furniture
- Awning
- Ducted Air Conditioning
- Large Microwave
- TV Antenna
- Cable Hook-up
- Mini-Blinds



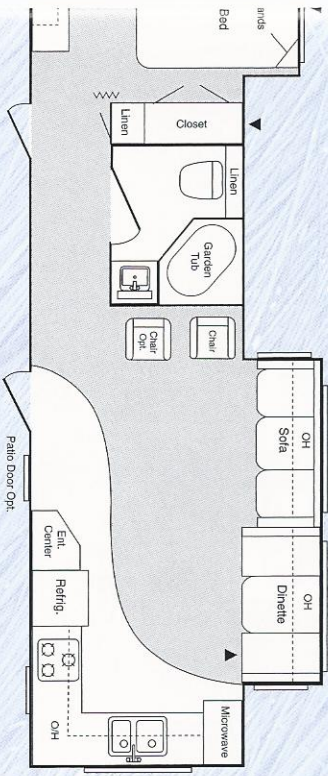
The upgraded sofa for 2002 features a fashionable radius camel back and five-button cushioned backrest.

TRAVEL TRAILER	GVWR	Gross Dry Weight	Carrying Cap.	Hitch Weight	Dry A Weight
260 RBS	9590	6380	3210	790	588
265 BH	7780	5585	2215	780	440
274 RLS	9400	6410	2990	600	622
275 FKS	9960	6340	3620	1150	548
288 BHS	9580	6470	3110	780	598
296 FK	7720	5460	2260	720	504
299 RLS	9680	6780	2900	880	620
303 BHS	9620	6830	2790	820	634
315 FKS	10060	7150	2910	1260	618
360 FKS	11400	8070	3330	1240	712
365 BHS	11140	8205	2935	980	732
377 TBS	11120	8315	2805	960	752
380 BWS	11400	8170	3230	1240	730

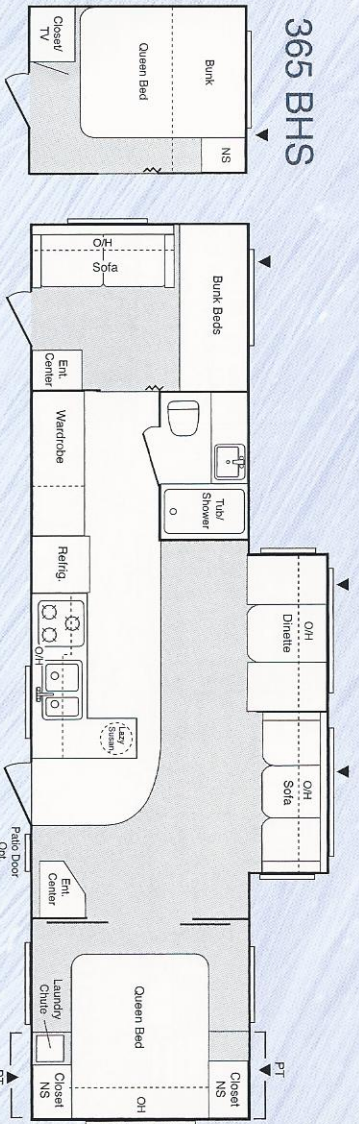
SPRINTER TRAVEL TRAILERS



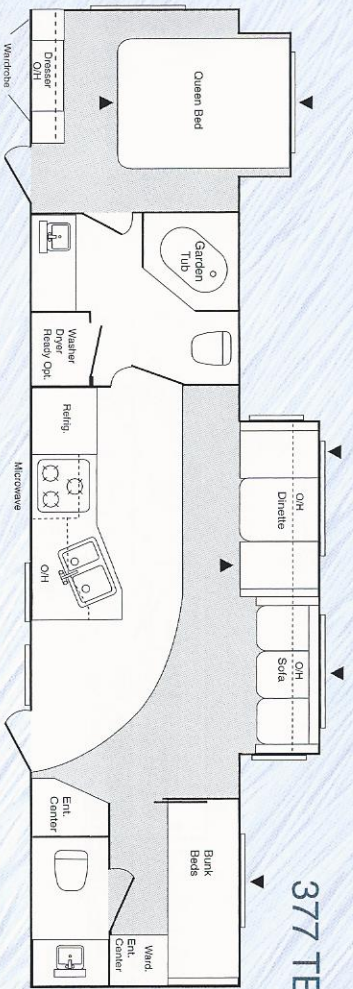
315 FKS



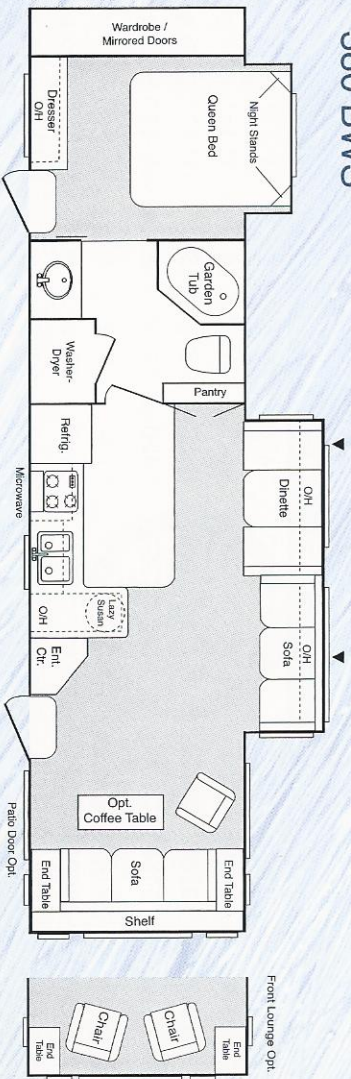
Ext. Length	Ext. Width	Ext. Height (Top of A/C)	Fresh Water	Waste Water	Grey Water	LP Gas Cap.	Tire Size
28' 0"	8"	10' 10"	45 gal	28 gal	28 gal	60	205/75R15
28' 3"	8'	10' 6"	45 gal	28 gal	28 gal	60	205/75R15
29' 1"	8'	10' 10"	45 gal	28 gal	28 gal	60	225/75R15
29' 5"	8'	10' 10"	45 gal	24 gal	56 gal	60	225/75R15
30' 6"	8'	10' 10"	45 gal	32 gal	48 gal	60	225/75R15
30' 8"	8'	10' 6"	45 gal	28 gal	56 gal	60	205/75R15
32' 11"	8'	10' 10"	45 gal	32 gal	48 gal	60	225/75R15
32' 3"	8'	10' 10"	45 gal	32 gal	28 gal	60	225/75R15
32' 6"	8'	10' 10"	45 gal	24 gal	56 gal	60	225/75R15
36' 7"	8'	10' 10"	45 gal	28 gal	56 gal	60	225/75R15
38' 1"	8'	10' 10"	45 gal	28 gal	56 gal	60	225/75R15
38' 6"	8'	10' 10"	45 gal	56 gal	56 gal	60	225/75R15
38' 7"	8'	10' 10"	45 gal	32 gal	56 gal	60	225/75R15



365 BHS

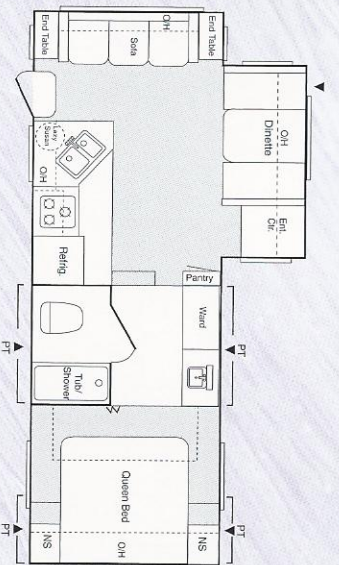


377 TBS

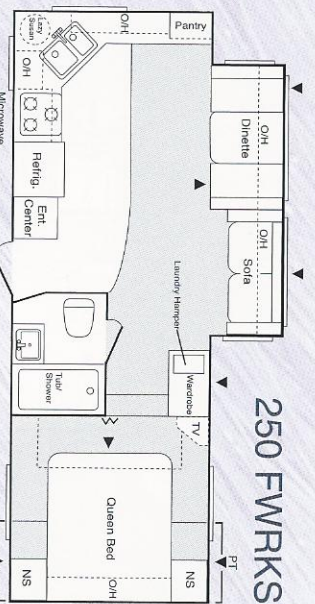


380 BWS

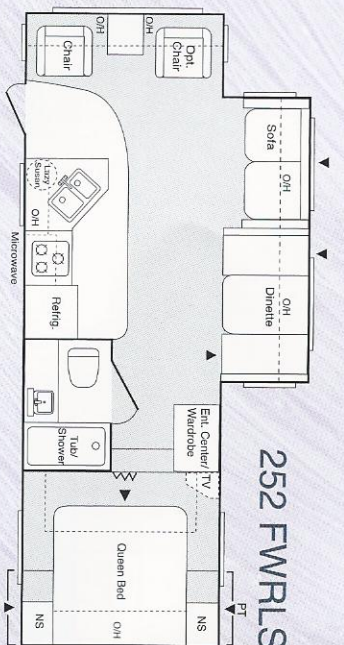
SPRINTER MID-PROFILE FIFTH WHEELS



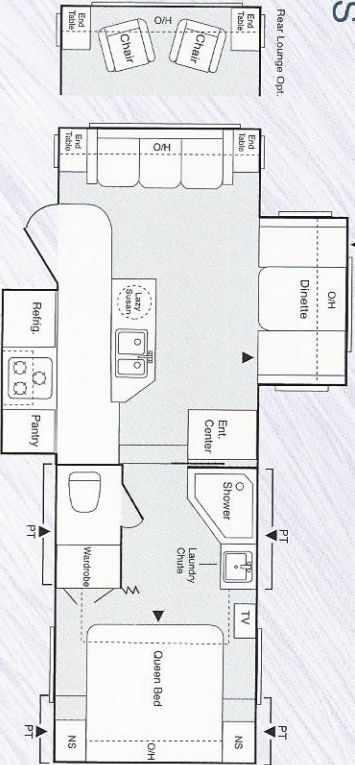
243 FWRLS



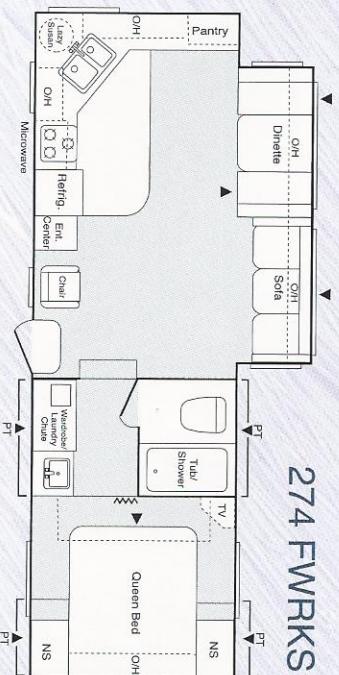
250 FWRKS



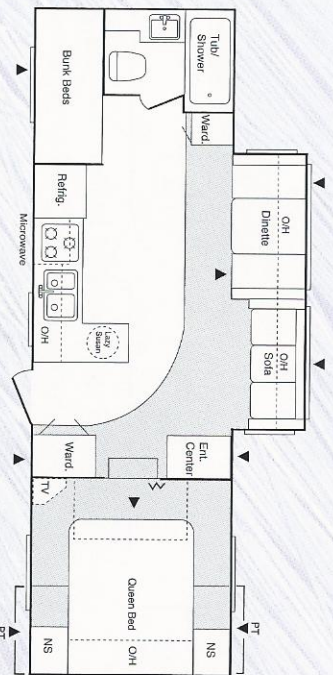
252 FWRLS



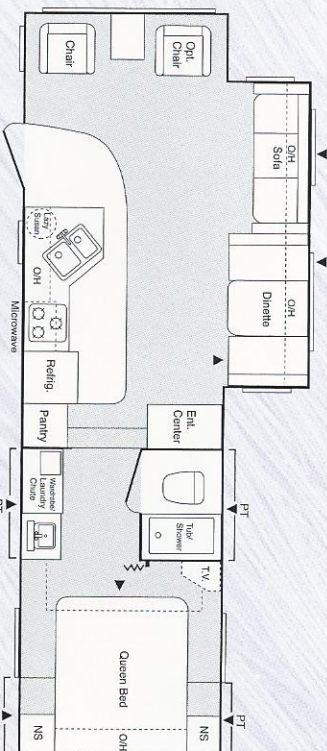
262 FWRLS



274 FWRKS

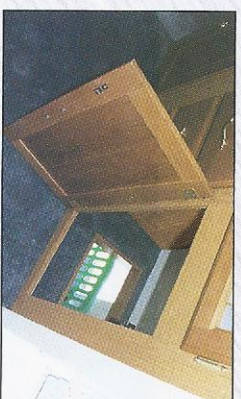


275 FWBHRS



276 FWRLS

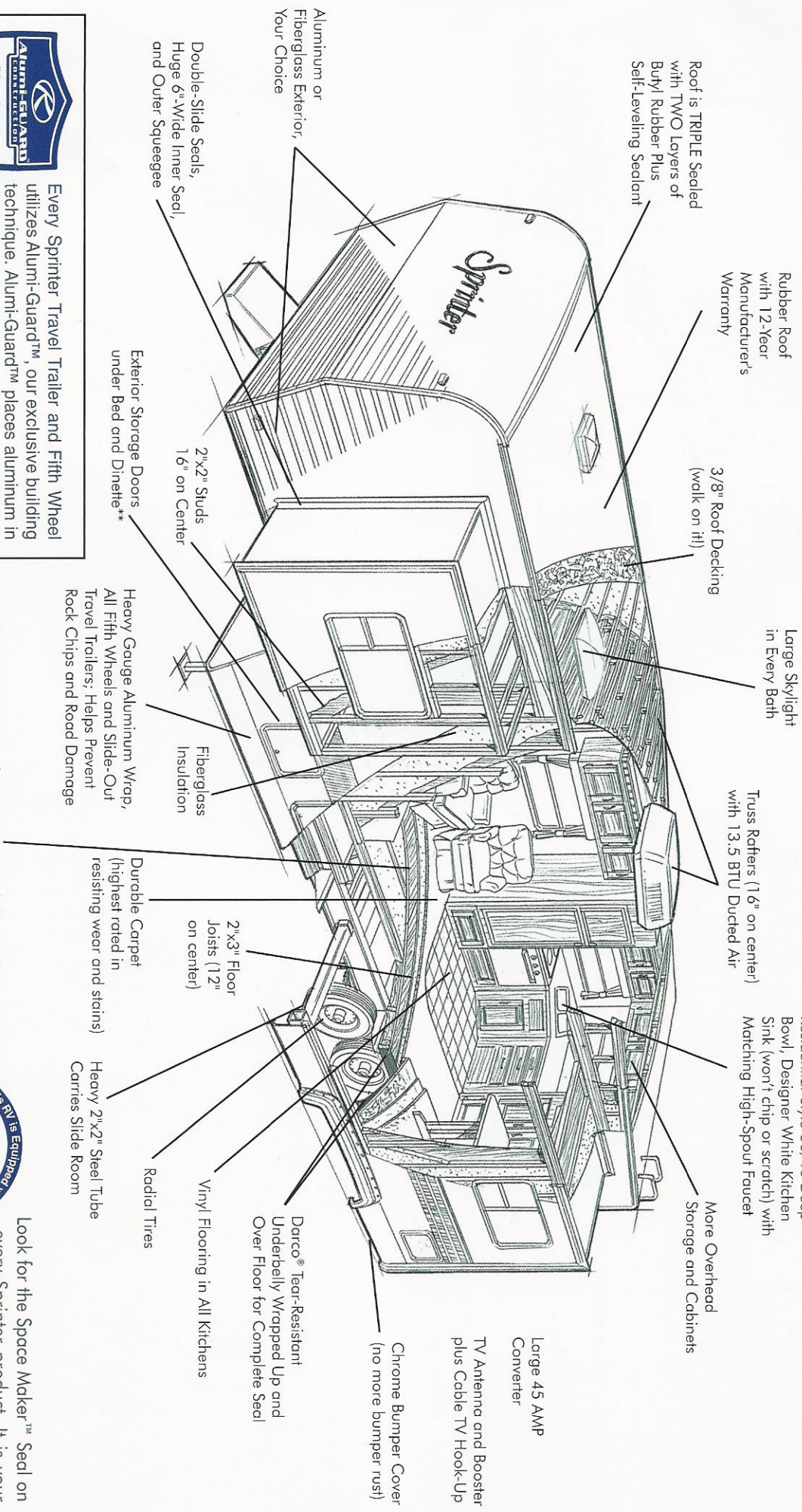
FIFTH WHEEL	GWWR	Gross Dry Weight	Carrying Cap.	Hitch	Dry Axle Weight	Ext. Length	Ext. Width	Ext. Height (Top of AC)	Fresh Water	Waste Water	Grey Water	LPG Cap.	Tire Size
243 FWRLS	8180	6330	1850	1180	5420	26' 6"	8'	11' 11"	45 gal	28 gal	28 gal	60	205/75R15
250 FWRKS	8400	6655	1745	1400	5340	26' 2"	8'	11' 11"	45 gal	28 gal	48 gal	60	205/75R15
252 FWRLS	8200	6930	1270	1200	5860	26' 5"	8'	11' 11"	45 gal	32 gal	28 gal	60	205/75R15
262 FWRLS	9960	7105	2855	1160	5420	27' 6"	8'	11' 11"	45 gal	32 gal	48 gal	60	225/75R15
274 FWRKS	10150	7305	2845	1350	6105	28' 4"	8'	11' 11"	45 gal	32 gal	48 gal	60	225/75R15
275 FWBHRS	10020	7260	2760	1220	6080	28' 9"	8'	11' 11"	45 gal	28 gal	28 gal	60	225/75R15
276 FWRLS	10100	7200	2900	1300	6040	29' 7"	8'	11' 11"	45 gal	28 gal	28 gal	60	225/75R15



Sprinter's nicely concealed laundry chute sends clothes to the outside access storage area.

LOOK AT THE INNER FEATURES OF A *Sprinter* TRAVEL TRAILER OR FIFTH WHEEL

"QUALITY CONSTRUCTION GETS UNDER OUR SKIN"



Every Sprinter Travel Trailer and Fifth Wheel utilizes **Alumi-Guard™**, our exclusive building technique. **Alumi-Guard™** places aluminum in the critical areas of construction — around doors and exterior storage compartments, providing the protection that only aluminum can offer. **Alumi-Guard™** extends the life of your Sprinter by protecting these areas from the damaging effects of moisture. **Alumi-Guard™** is offered on all Sprinter products at the same price point our competition offers for wood alone!



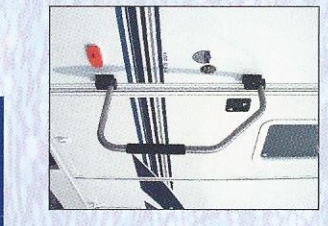
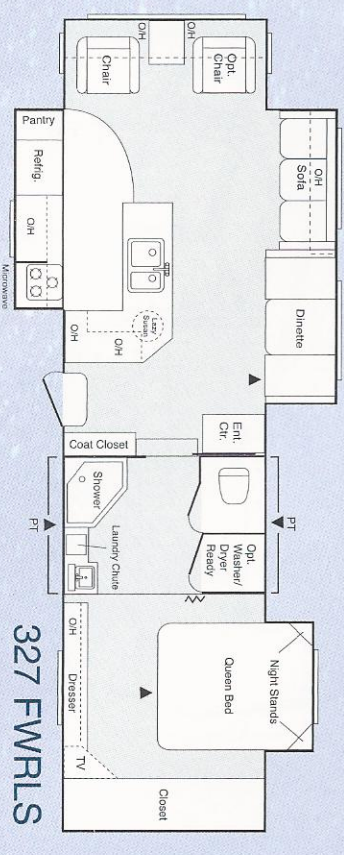
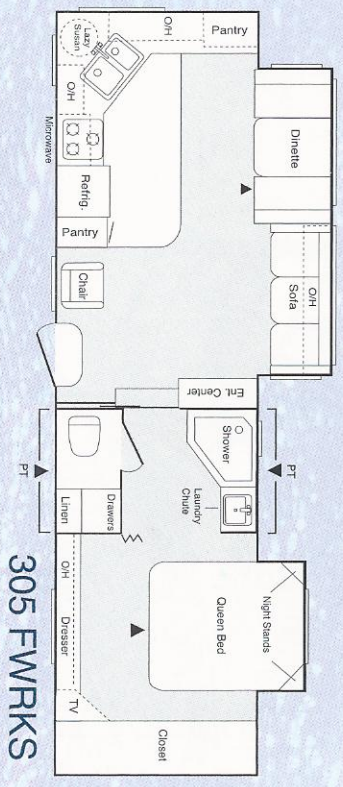
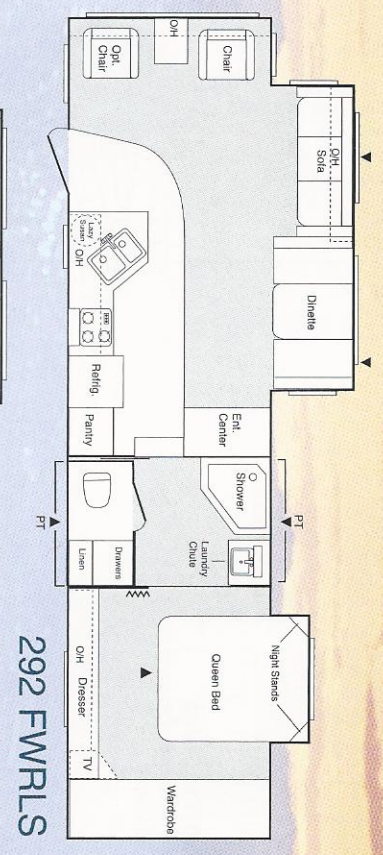
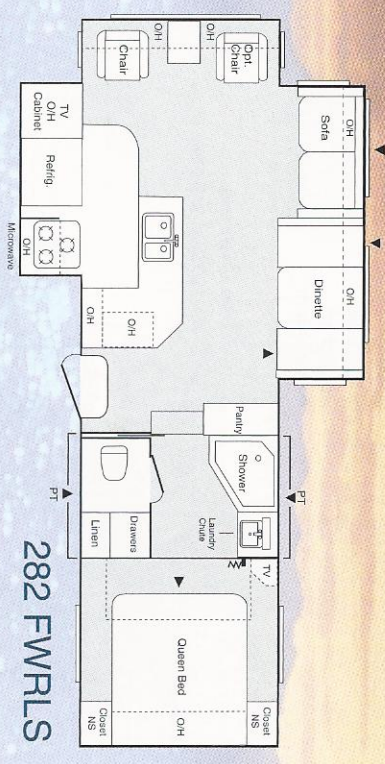
**Some floor plans do not accommodate all of these features



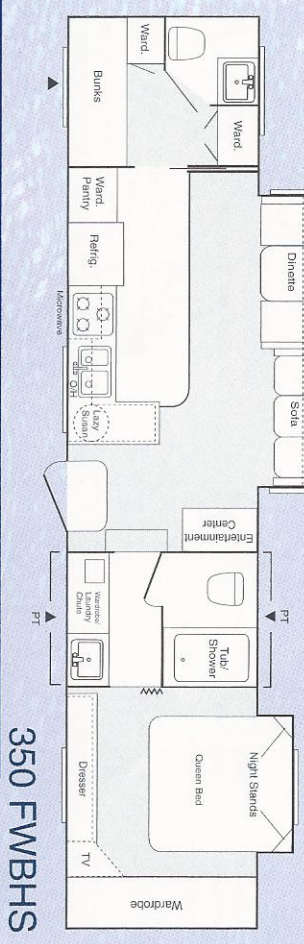
Look for the **Space Maker™ Seal** on every Sprinter product. It is your assurance that your Sprinter is equipped with our exclusive under-floor fresh water storage system. Saves space, resists freezing, enhances towability, and provides extra fresh-water capacity.



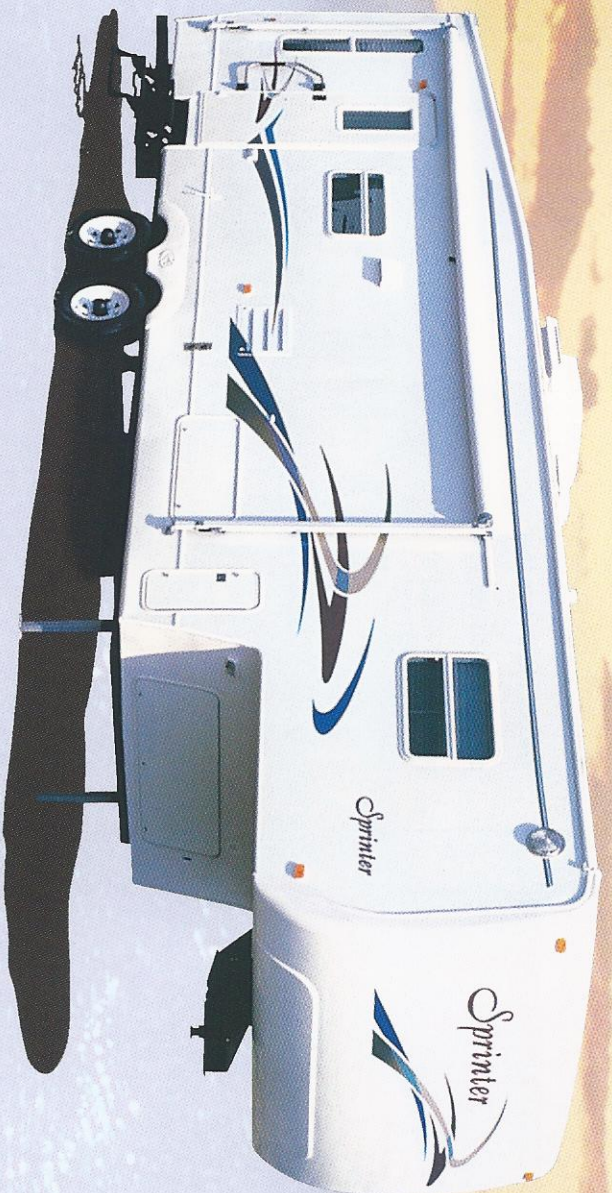
SPRINTER "HP" FIFTH WHEELS



This folding grab handle, along with our hickory extendable steps, are good examples of the careful attention to every detail you will find on all Sprinter products, inside and out.



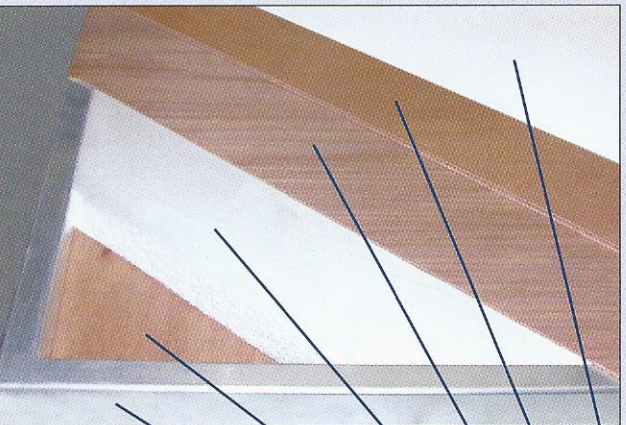
FIFTH WHEEL	GWWR	Gross Dry Weight	Carrying Cap.	Hitch	Dry Axle Weight	Ext. Length	Ext. Width	Ext. Height (Top of AC)	Fresh Water	Waste Water	Grey Water	LPG Cap.	Tire Size
282 FWRLS	11640	8310	3330	1480	6960	29' 6"	8'	12' 2"	45 gal	32 gal	48 gal	60	225/75R15
292 FWRLS	11800	8500	3300	1640	7000	31' 11"	8'	12' 2"	45 gal	28 gal	48 gal	60	225/75R15
305 FWRKKS	11940	8710	3230	1780	7040	32' 4"	8'	12' 2"	45 gal	32 gal	48 gal	60	225/75R15
327 FWRLS	14280	9810	4470	2280	8060	34' 3"	8'	12' 4"	45 gal	32 gal	48 gal	60	235/85R16
350 FWBHHS	12540	9460	3080	2380	7320	36' 9"	8'	12' 2"	45 gal	32 gal	48 gal	60	225/75R15



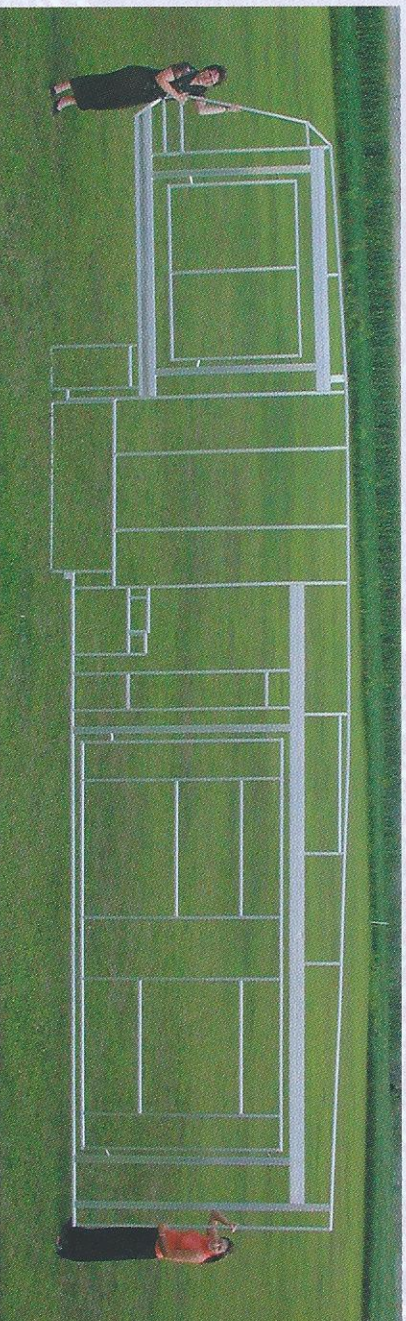
SPRINTER "HP" FOR EXPERIENCED RV'ERS

All Sprinter "HP" Fifth Wheels are high-profile models with standing room in the bedrooms. Our exteriors feature fiberglass side-walls and an optional state of the art fiberglass front cap that was designed with the latest technology in wind resistance. Sprinter "HP's" sleek design improves towability. Another feature that provides improved towability is our tubular aluminum welded sidewall frame and our six-layered laminated sidewall process which provides a lightweight, well-insulated fifth wheel with uncompromised structural integrity. Sprinter "HP" is a fifth wheel with advanced construction designed for the experienced RV'er. at the price of a conventionally built RV.

1. Fiberglass Exterior
2. Outer Luan Panel
3. Inner Luan Panel
4. Dense Block Foam Insulation
5. Interior Paneling
6. Tubular Aluminum Frame



Sprinter "HP" six-layer laminated construction.



Light yet durable — Sprinter "HP's" fully welded aluminum sidewall.

SPRINTER CONSTRUCTION

BUILT WITH INTEGRITY...

from the inside out.

Cambered steel frame with extra supporting outriggers under every Sprinter RV.

One-piece, seamless, 5/8" floor deck with a 25-yr. mfr.'s warranty.

Rubber roof (12-yr. mfr.'s warranty) rolled over side and rear walls to eliminate seams and prevent potential leaks.

Fully-decked roof on trussed rafters, a full 5" thick, providing an R-11 insulation rating.

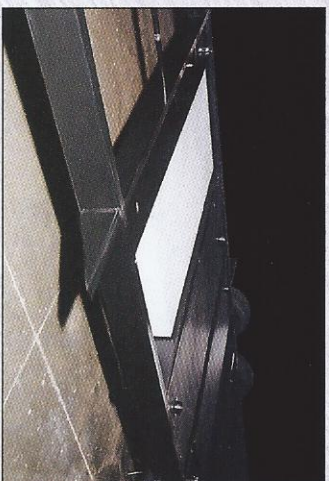
Easy-opening entry steps with extra-low first step.

Taller, wider entry door, radius corners.

Outside storage doors.



Welded aluminum supports in all raised-bath fifth wheel decks provide strength and rigidity in all critical high-stress areas.



"Space-Maker,"™ Sprinter's underfloor fresh-water system, is located in a heated compartment to resist freezing. This frees up usable space and lowers the center of gravity for easier towability of your Sprinter.

CHECK OUT THESE POPULAR OPTIONS FOR ALL SPRINTERS

- FIBERGLASS EXTERIOR
- STABILIZER JACKS
- OUTSIDE SHOWER
- 10-GAL. HOT WATER HEATER
- PATIO DOOR
- FREE-STANDING TABLE WITH FOUR CHAIRS
- WASHER/DRYER HOOK-UP
- EXTRA LARGE REFRIGERATOR
- HIDE-A-BED SOFAS
- 15,000 BTU AIR CONDITIONER
- OAK REFRIGERATOR FRONT
- SPARE TIRE AND CARRIER
- RESIDENTIAL REFRIGERATOR

SPRINTER VALUE

Sprinter value happens because we focus on the manufacturing process. We put the dollars that many companies spend on large advertising campaigns, executive benefits, and costly office complexes into improving our products. We also strive to increase our manufacturing efficiencies while maintaining high quality. We achieve this high level of quality by employing a workforce from a community which still values craftsmanship. Finally, we listen to our Sprinter customers across the country. We learned a long time ago that great ideas come from the people who use our products daily. We appreciate and value this input and have implemented many of these ideas into our products.

The result of these efforts has been dramatic. Sprinter recreational vehicles are now seen everywhere—on the Interstates, on the Trans-Canadian Highway, from the Rockies to the Everglades, in just about any camping resort or national park you enter in the U.S. or Canada. We welcome you to join the Sprinter family of travel trailers and fifth wheels, where quality, comfort, and function meet.

Sprinter is a product of:



17400 Hackberry Drive Goshen, Indiana 46526
(219) 642-4590 www.Keystone-goshen.com

Your Sprinter Dealer:

JERRY'S TRAILERS & CAMPERS
2601 S. 13th St.
Norfolk, NE 68701
(402) 371-1306



Product information and photography are as accurate as possible at the time of publication. Colors and finishes are photographic representations and may appear differently when viewing actual materials. Some features shown are optional. Features, floorplans, and specifications are subject to change without notice.