

Sandpiper™

BY FOREST RIVER

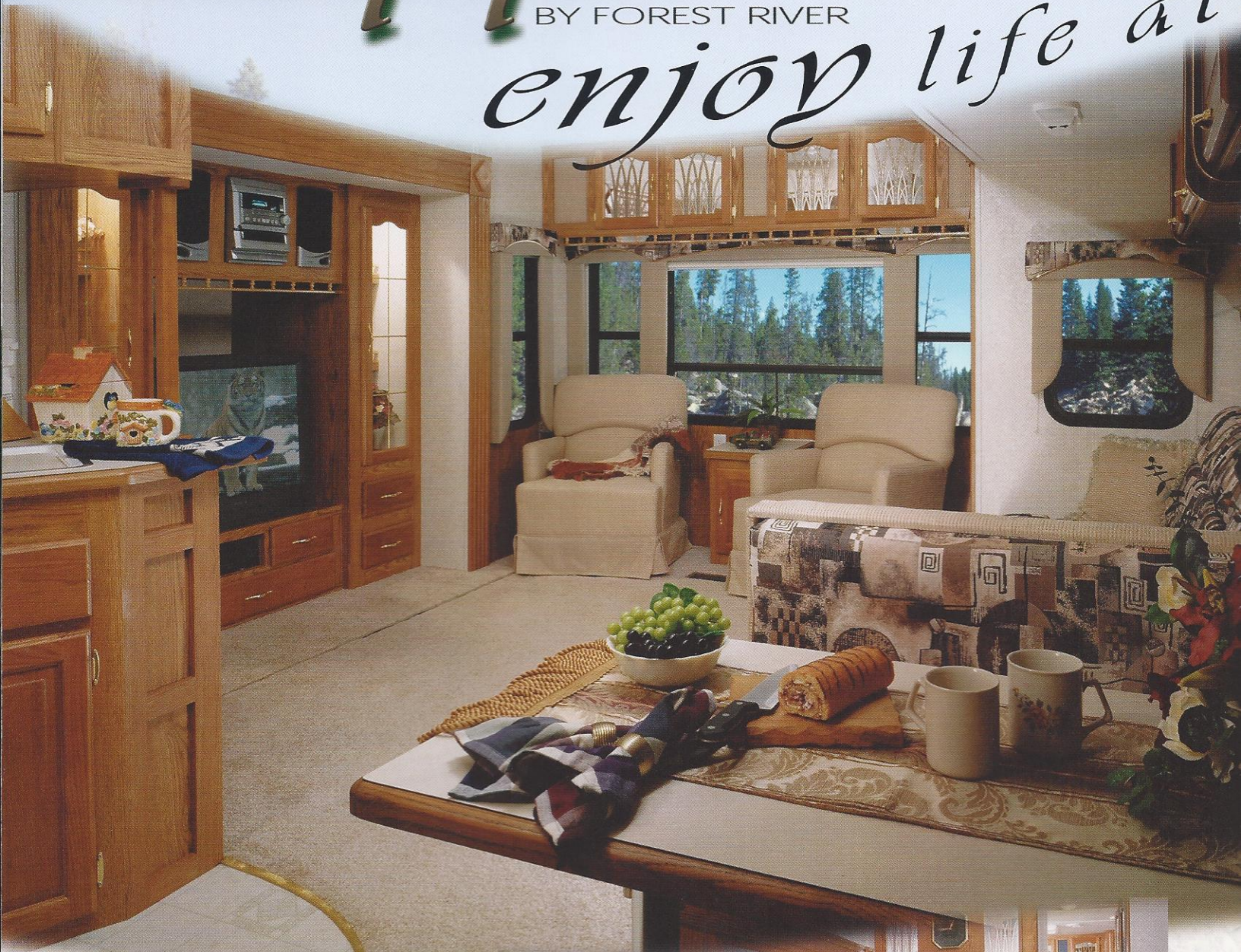


Travel Trailers
& Fifth Wheels

Sandpiper™

BY FOREST RIVER

enjoy life at



35RLTS shown in Tan decor.

Sandpiper's™ spacious interior is meant for living. Large slide-outs and upscale furnishings form a living area that turns rainy days into pleasure. Beautifully tailored fabrics come together in a mosaic of color and style while home-like appointments bring added comfort and convenience.

27RKSS shown in Blue decor.



its best!

travel trailers

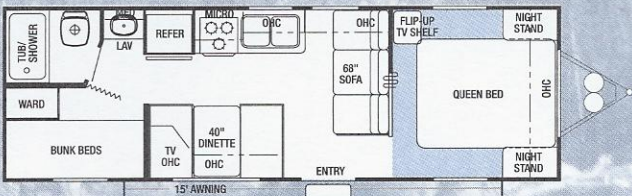
As a buyer in today's market, you demand quality and luxury at an affordable price. We at Forest River, Inc. are committed to responding to consumer needs. A result of that commitment is our new Sandpiper™ line.

Sandpiper™ offers solid oak raised panel cabinet doors with mortise and tenon jointing, solid oak edging on all laminated tops, Fantastic fan in the bathroom, 22" Magic Chef oven with a high output three burner range top, larger capacity under-floor fresh water tank and water filtration system. You'll also find abundant storage throughout the interior including pots and pans drawer under the dinette and super storage under queen island beds (travel trailers only) per floor plan.

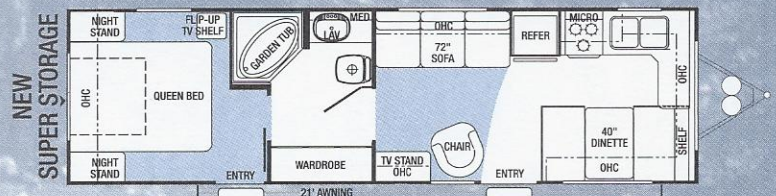
Our living rooms lend themselves to rest and relaxation. You may listen to your favorite music on a built in premium sound stereo system or watch any of your favorite TV programs. For your convenience, there are TV and cable outlets in both the living room and the bedroom along with standard satellite prep. Generous flush-floor slide-outs include handy cabinets for extra storage and vented side windows. Living room slide-outs hold a 44" dinette along with a large picture window. A four color choice of fabrics that are not only beautiful, but will clean easily and endure even the most rigorous use. Lighting may also be controlled in the living area by dimming your mini blinds.

With Sandpiper™, you'll find everything at a fingertip's reach. We have specifically engineered each floor plan with ease of usability in mind. The Sandpiper™ is beautifully appointed with features you'd never think possible in "affordable" models. The Sandpiper™ is final evidence that Forest River will continue to lead the industry with the greatest selection and quality of products that can be found anywhere.

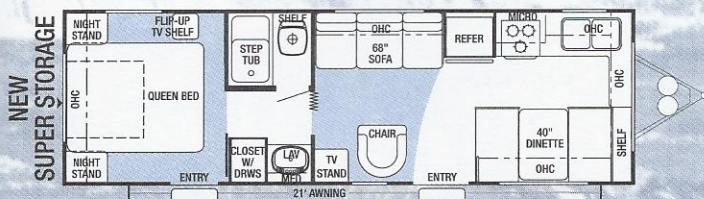
27BH Options 1, 2, C, D



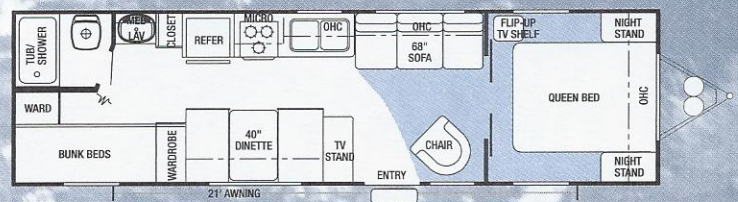
30GT Options 1, 2, A, B, D



28FK Options 1, 2, A, B, D



31BH Options 1, 2, A, C, D



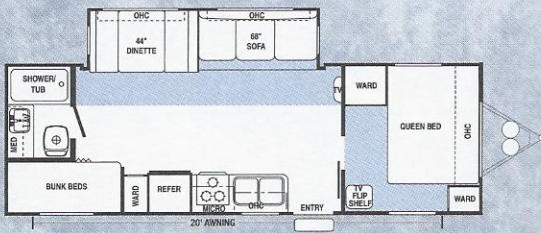
**Travel Trailers
& Fifth Wheels**

SandpiperTM

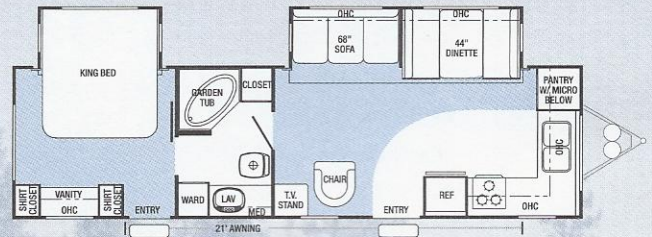
BY FOREST RIVER

enjoy life at

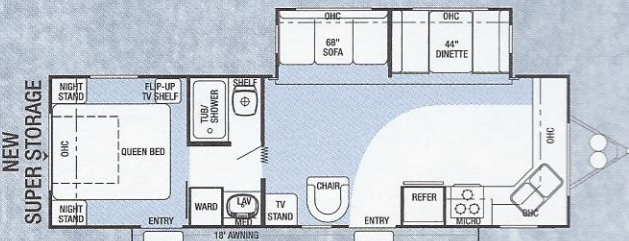
26BHSS



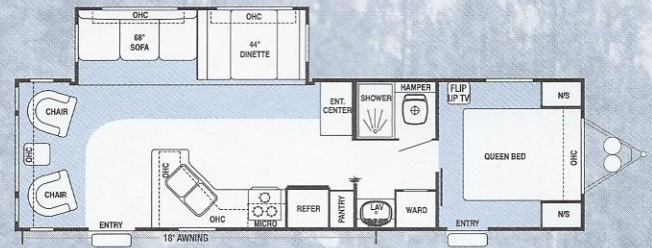
32FKDS Option D



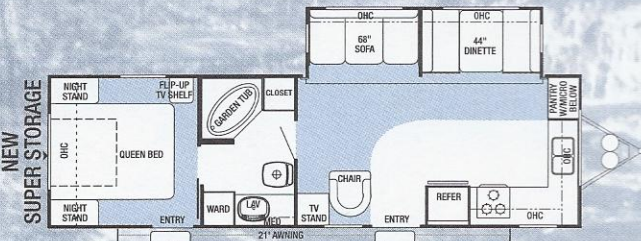
27FKSS Options 1, 2, A, C, D



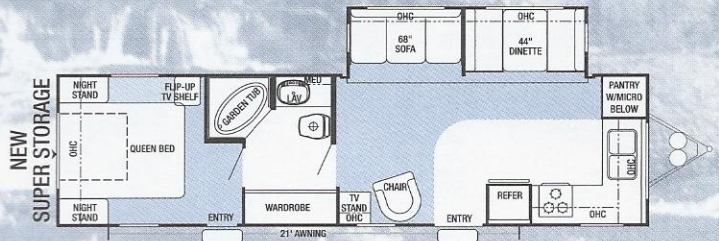
32RLSS Options 1, 2, A, D



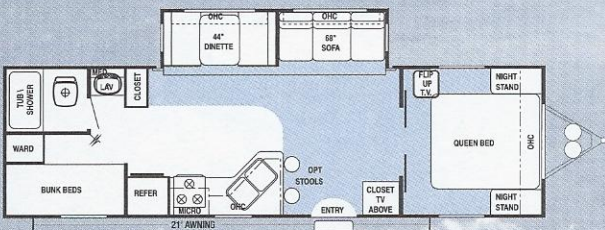
30FKSS Options 1, 2, A, C, D



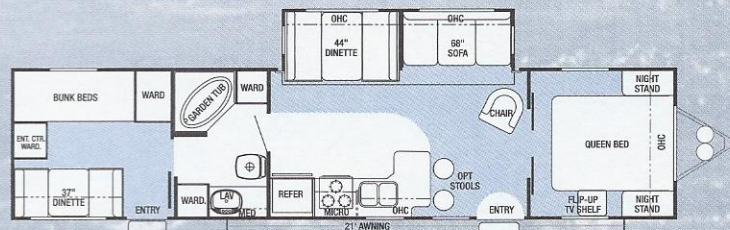
33FKSS Options 1, 2, A, D



30BHSS Options 1, 2, A, C, D

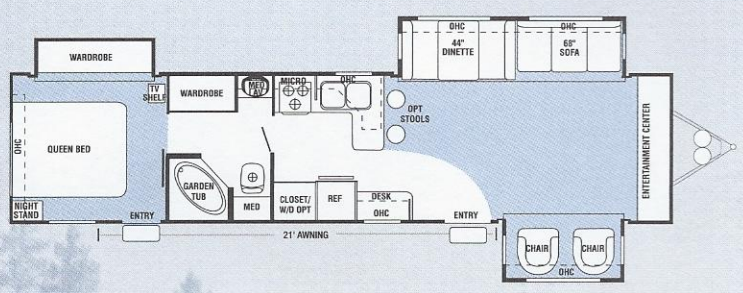


37BHSS Options 1, 2, A, B, D

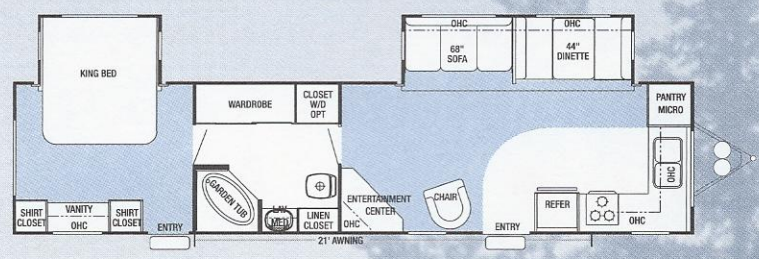


its best!
slide-out travel trailers

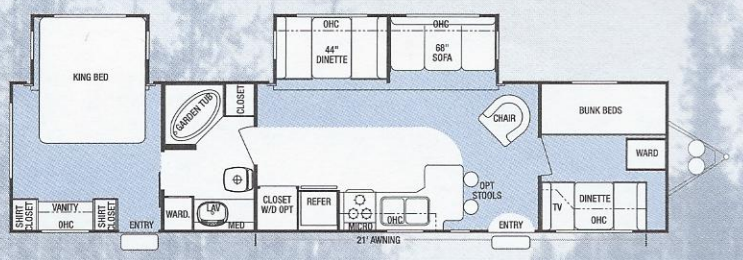
38FLTS Option D



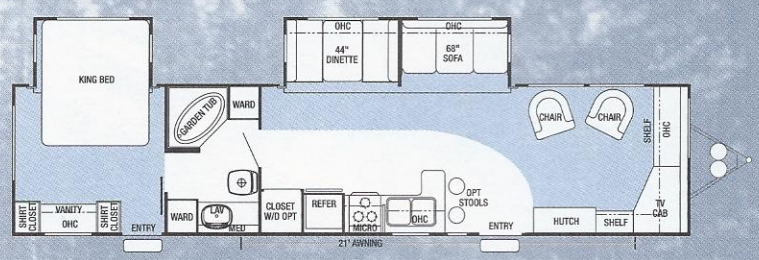
38FKDS Option D



38BHDS Options A, B, C (FRONT BEDROOM ONLY), D

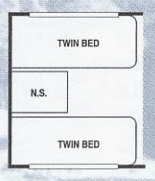


38SLDS Option D

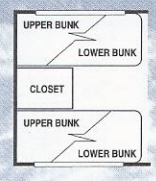


TRAVEL TRAILER OPTIONS

Twin Beds Option A

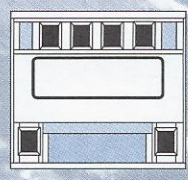


4 Bunks Option B

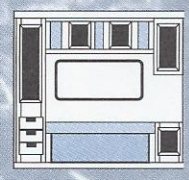


Bedroom wardrobe options except 32FKDS, 38BHDS, 38FKDS, 38SLDS, AND 38FLTS

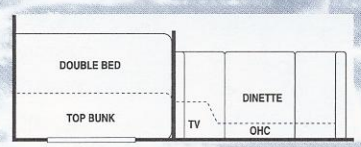
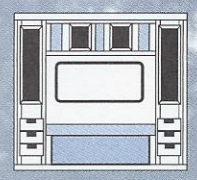
Standard



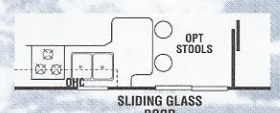
Option 1



Option 2



Rear Double Bed w/Bunk Option C

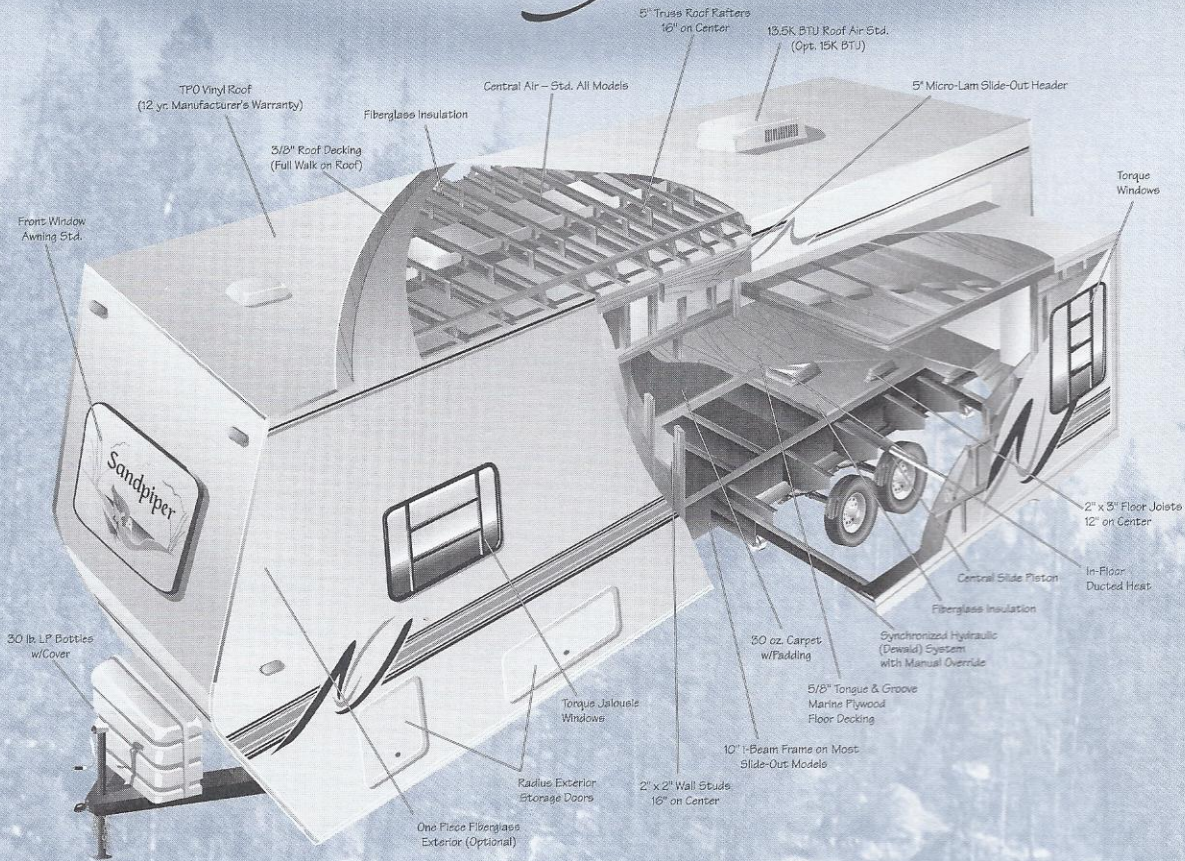


Patio Door Option D

SandpiperTM

BY FOREST RIVER

enjoy life at



TRAVEL TRAILER SPECIFICATIONS

| Model No. | Ship* Weight | Weight With Fiberglass | GVWR | Cargo Capacity | Hitch Weight | Axle Weight | Exterior Height | Exterior Length | Sleeping Capacity | Fresh Water (Gal.) | Waste Water (Gal.) | Grey Water (Gal.) | Water Heater Cap. (Gal.) | LP Capacity (Lbs.) | Furnace BTU (x1000) | Tire Size | Bedroom Height |
|-----------|--------------|------------------------|--------|----------------|--------------|-------------|-----------------|-----------------|-------------------|--------------------|--------------------|-------------------|--------------------------|--------------------|---------------------|--------------|----------------|
| 27BH | 5245 | 5742 | 7630 | 2385 | 630 | 4615 | 10' 1" | 28' 11" | 8 | 35 | 30 | 27 | 6 | 60 | 30 | ST205/75R15C | 80" |
| 28FK | 5405 | 5810 | 7900 | 2495 | 900 | 4505 | 10' 1" | 30' 7" | 6 | 35 | 30 | 30 | 6 | 60 | 30 | ST205/75R15C | 80" |
| 30GT | 5805 | 6252 | 7680 | 1875 | 680 | 5125 | 10' 1" | 32' 0" | 6 | 35 | 45 | 27 | 6 | 60 | 30 | ST205/75R15C | 80" |
| 31BH | 5935 | 6383 | 7595 | 1660 | 595 | 5340 | 10' 1" | 32' 5" | 8 | 35 | 30 | 27 | 6 | 60 | 30 | ST205/75R15C | 80" |
| 26BHSS† | 6236 | 6236 | 7665 | 1429 | 665 | 5571 | 10' 9" | 28' 11" | 8 | 42 | 30 | 30 | 6 | 60 | 30 | ST205/75R15C | 80" |
| 27FKSS | 6895 | 7300 | 8290 | 1395 | 1290 | 5605 | 10' 9" | 28' 7" | 6 | 42 | 30/30 | 27 | 6 | 60 | 30 | ST205/75R15C | 80" |
| 30FKSS | 6965 | 7393 | 11,150 | 4185 | 990 | 5975 | 10' 9" | 31' 11" | 6 | 42 | 45 | 27/27 | 6 | 60 | 30 | ST225/75R15D | 80" |
| 30BHSS | 7650 | 8098 | 10,980 | 3330 | 820 | 6830 | 10' 9" | 32' 5" | 8 | 42 | 30 | 30 | 6 | 60 | 30 | ST225/75R15D | 80" |
| 32FKDS | 7665 | 8140 | 11,055 | 3390 | 895 | 6770 | 10' 9" | 32' 10" | 6 | 42 | 45 | 27/27 | 6 | 60 | 30 | ST225/75R15D | 80" |
| 32RLSS | 7860 | 8320 | 11,090 | 3230 | 930 | 6930 | 10' 9" | 33' 0" | 6 | 42 | 30 | 30 | 6 | 60 | 30 | ST225/75R15D | 80" |
| 33FKSS | 7115 | 7590 | 11,280 | 4165 | 1120 | 5995 | 10' 9" | 33' 5" | 6 | 42 | 45 | 27/27 | 6 | 60 | 30 | ST225/75R15D | 80" |
| 37BHSS | 7950 | 8490 | 11,030 | 3080 | 870 | 7080 | 10' 9" | 38' 3" | 8 | 42 | 45 | 27 | 6 | 60 | 30 | ST225/75R15D | 80" |
| 38FLTS | 9310 | 9850 | 11,660 | 2350 | 1500 | 7810 | 10' 9" | 38' 10" | 6 | 42 | 45 | 27 | 6 | 60 | 30 | ST225/75R15D | 80" |
| 38BHDS | 9305 | 9845 | 11,190 | 1885 | 1030 | 8275 | 10' 9" | 38' 10" | 8 | 42 | 45 | 27 | 6 | 60 | 30 | ST225/75R15D | 80" |
| 38FKDS | 9905 | 10,445 | 11,270 | 1365 | 1110 | 8795 | 10' 9" | 38' 10" | 6 | 42 | 45/45 | 27 | 6 | 60 | 30 | ST225/75R15D | 80" |
| 38SLDS | 9170 | 9710 | 11,230 | 2060 | 1070 | 8100 | 10' 9" | 38' 10" | 6 | 42 | 45 | 27 | 6 | 60 | 30 | ST225/75R15D | 80" |

* Ship weights do not include options.

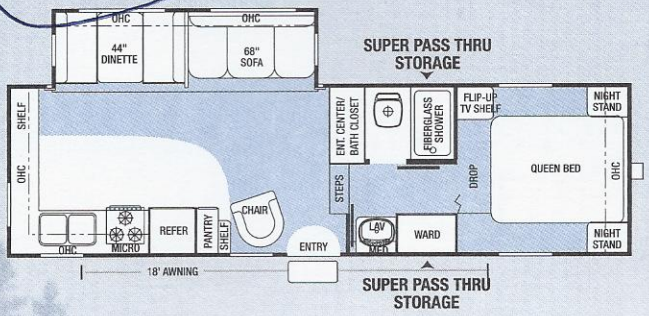
** Not available at time of printing.

† Model standard w/fiberglass exterior

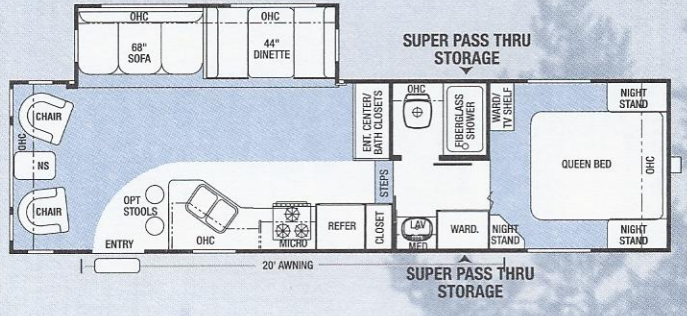
Model number does not necessarily reflect the overall length of a particular unit.

its best!
Slide-out fifth wheels

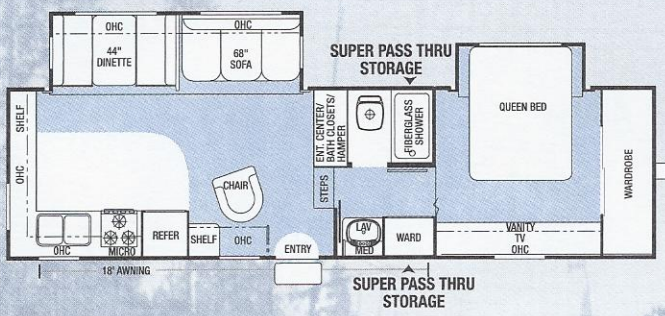
27RKSS Options 1, 2, A



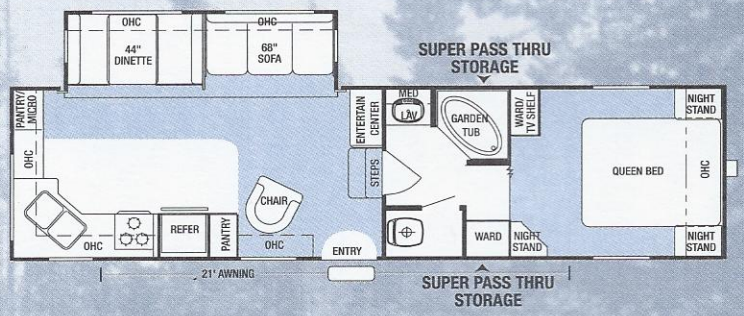
30RLSS Options 1, 2, A, E



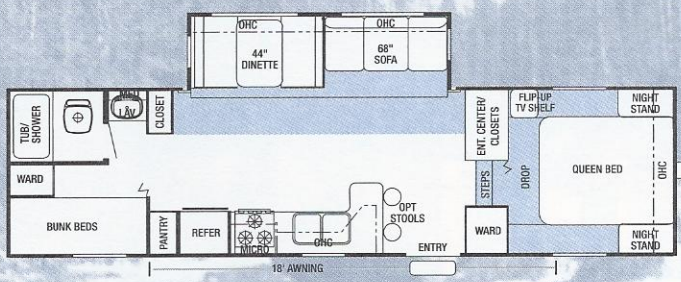
28RKBS



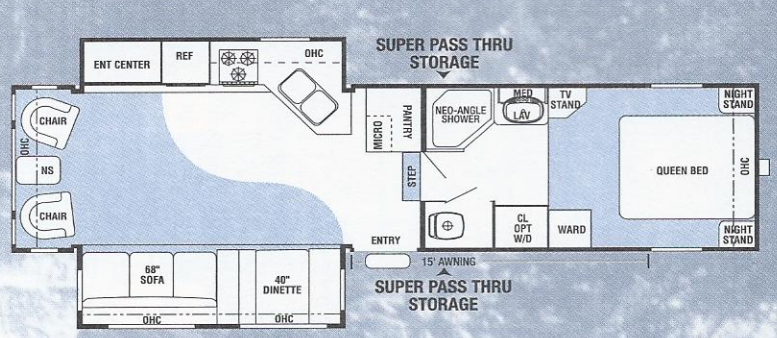
31RKSS Options 1, 2, A, E



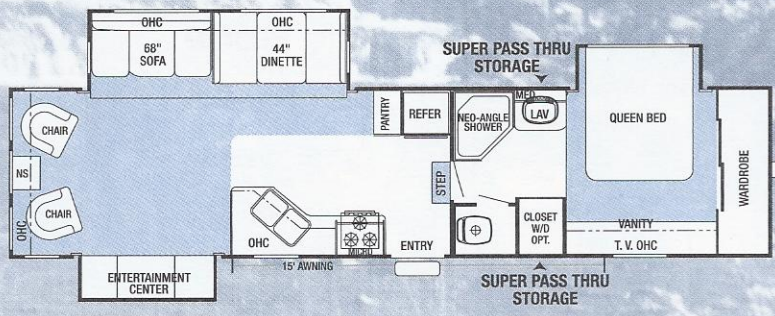
30BHSS Options 1, 2, A, C



33RLDS Options 1, 2, A, E



35RLTS



**Travel Trailers
 & Fifth Wheels**

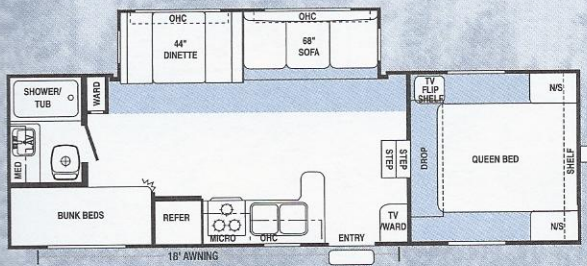
Sandpiper™

BY FOREST RIVER

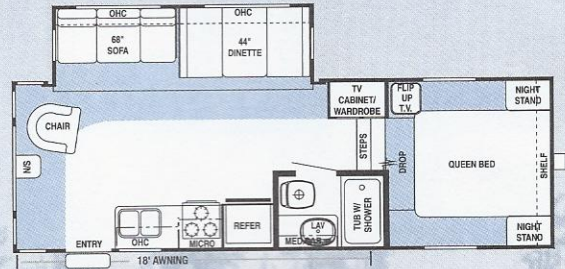
enjoy life at

MID-PROFILE

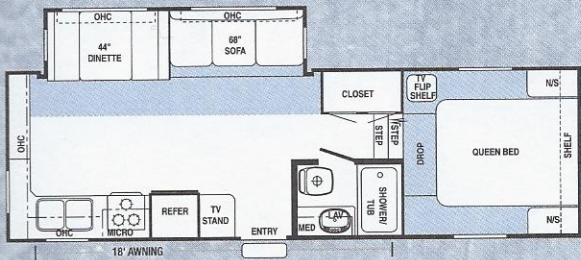
25BHSS MID Options 1, 2, A



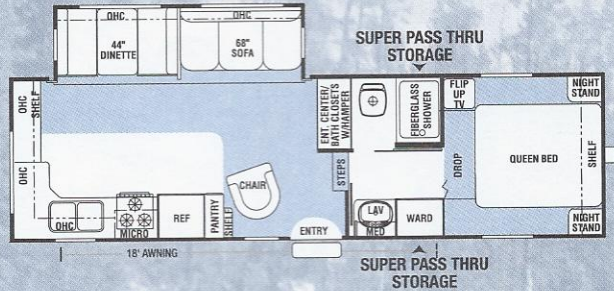
25RLSS MID Options 1, 2, A



25RKSS MID Options 1, 2, A



27RKSS MID Options 1, 2, A



28RLDS MID Options 1, 2, A

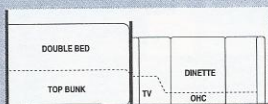


FIFTH WHEEL OPTIONS

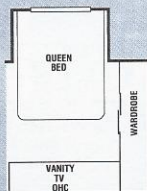
Bedroom and wardrobe options for all fifth wheels.



Twin Beds
Option A



Rear Double Bed w/Bunk
Option C



Slide Out
Option E

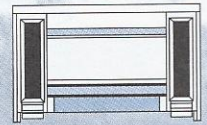
Mid-Profile



Standard



Option 1



Option 2

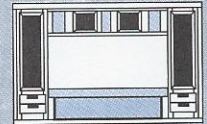
Hi-Profile



Standard

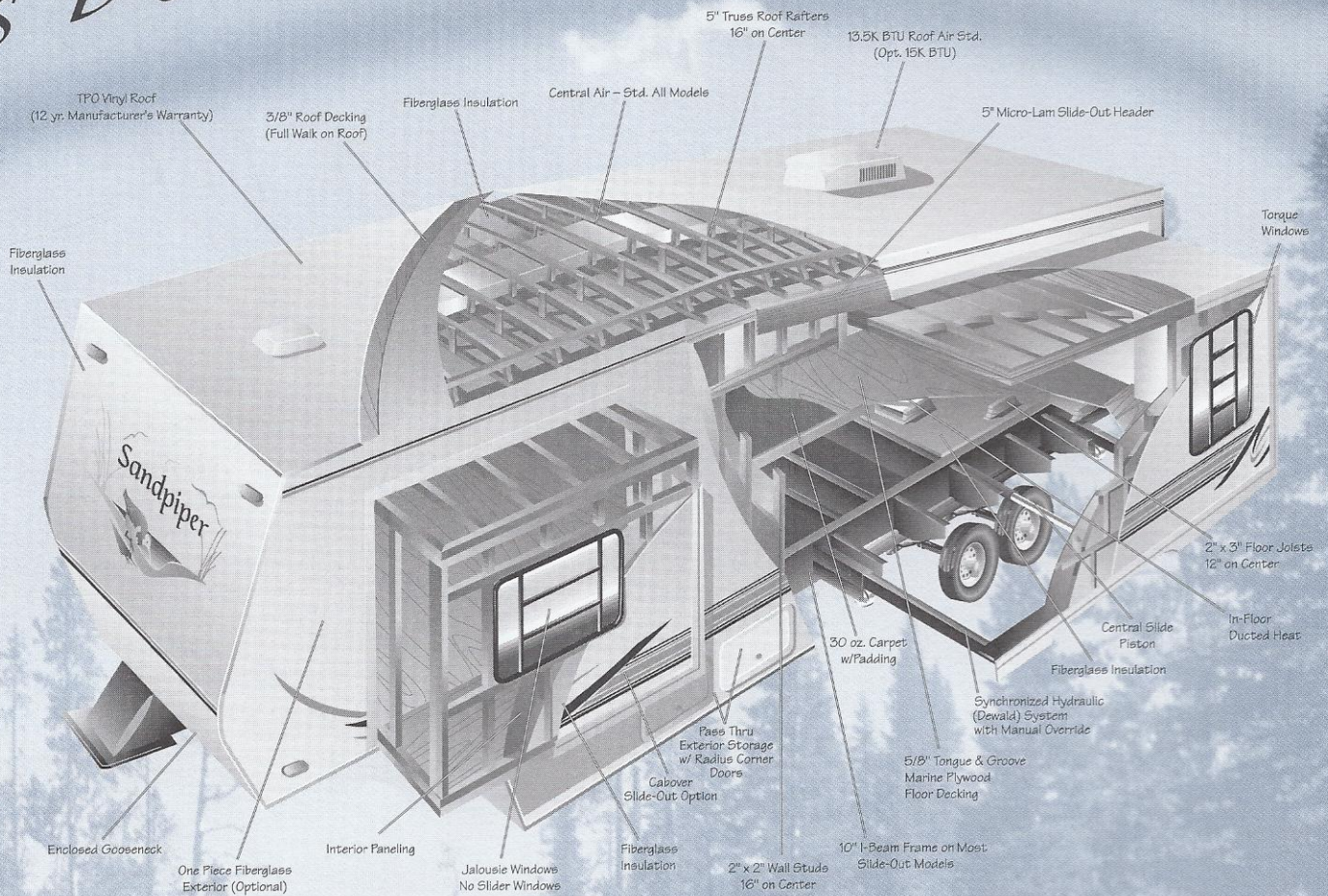


Option 1



Option 2

its best!



FIFTH WHEEL SPECIFICATIONS

| Model No. | Ship* Weight | Weight With Fiberglass | GVWR | Cargo Capacity | Hitch Weight | Axle Weight | Exterior Height | Exterior Length | Sleeping Capacity | Fresh Water (Gal.) | Waste Water (Gal.) | Grey Water (Gal.) | Water Heater Cap. (Gal.) | LP Capacity (Lbs.) | Furnace BTU (x1000) | Tire Size | Bedroom Height (FW) |
|--------------------|--------------|------------------------|--------|----------------|--------------|-------------|-----------------|-----------------|-------------------|--------------------|--------------------|-------------------|--------------------------|--------------------|---------------------|--------------|---------------------|
| Mid-Profile | | | | | | | | | | | | | | | | | |
| 25BHSS† | 7210 | 7210 | 8520 | 1310 | 1520 | 5690 | 11' 7" | 27' 11" | 8 | 42 | 30 | 30 | 6 | 60 | 30 | ST205/75R15C | 71" |
| 25RKSS† | 7270 | 7270 | 8560 | 1290 | 1560 | 5710 | 11' 7" | 27' 9" | 6 | 42 | 30 | 30/30 | 6 | 60 | 30 | ST205/75R15C | 71" |
| 25RLSS† | 7040 | 7040 | 8380 | 1340 | 1380 | 5660 | 11' 7" | 26' 1" | 6 | 42 | 30 | 30 | 6 | 60 | 30 | ST205/75R15C | 71" |
| 27RKSS† | 7672 | 7672 | 11,586 | 3914 | 1426 | 6149 | 11' 7" | 29' 0" | 6 | 42 | 45 | 27/27 | 6 | 60 | 30 | ST225/75R15D | 71" |
| 28RLDS† | 9407 | 9407 | 11,730 | 2323 | 1570 | 7440 | 11' 7" | 30' 1" | 6 | 42 | 30 | 30/30 | 6 | 60 | 30 | ST225/75R15D | 71" |
| Hi-Profile | | | | | | | | | | | | | | | | | |
| 27RKSS | 7275 | 7672 | 11,400 | 4125 | 1240 | 6035 | 12' 2" | 29' 0" | 6 | 42 | 45 | 27/27 | 6 | 60 | 30 | ST225/75R15D | 77" |
| 28RKBS | 8500 | 8917 | 12,110 | 3610 | 1950 | 6550 | 12' 2" | 29' 9" | 6 | 42 | 30 | 27/27 | 6 | 60 | 30 | ST225/75R15D | 69" |
| 30BHSS | 8100 | 8517 | 11,490 | 3390 | 1330 | 6770 | 12' 2" | 31' 3" | 8 | 42 | 30 | 27 | 6 | 60 | 30 | ST225/75R15D | 77" |
| 30RLSS | 8276 | 8714 | 12,125 | 3849 | 1965 | 6311 | 12' 2" | 32' 8" | 6 | 42 | 45 | 27 | 6 | 60 | 30 | ST225/75R15D | 69" |
| 31RKSS | 8653 | 9180 | 12,139 | 3486 | 1979 | 6674 | 12' 2" | 32' 3" | 6 | 42 | 30/45 | 27 | 6 | 60 | 30 | ST225/75R15D | 69" |
| 33RLDS | 10,310 | 10,762 | 14,180 | 3870 | 2180 | 8130 | 12' 2" | 33' 4" | 6 | 42 | 45/45 | 27 | 6 | 60 | 30 | ST225/75R15D | 69" |
| 35RLTS | 10,098 | 10,562 | 13,859 | 3761 | 1859 | 8239 | 12' 2" | 35' 6" | 6 | 42 | 45/45 | 27 | 6 | 60 | 30 | ST225/75R15D | 69" |

* Ship weights do not include options.

† Models standard w/fiberglass exteriors.

Model number does not necessarily reflect the overall length of a particular unit.

Travel Trailers & Fifth Wheels

Sandpiper™

BY FOREST RIVER

enjoy life at

Sandpiper™ Features

COMFORT

- Four color coordinated interiors
- Color coordinated drapes & valances
- Color coordinated bedspreads & bunkspreads
- 80" interior height (trailers only)
- 44" dinette seats (Slide-outs only)
- Queen/King bed (per floor plan)
- Free standing chair (per floor plan)
- Bedroom roof vent
- Dometic® 13,500 BTU central air conditioner w/quick cool feature
- In floor ducted heat
- 30 oz. carpet w/padding
- 30" radius primary entrance door, 26" secondary
- Sofa pillows

CONVENIENCE

- 6 gal. gas/electric DSI water heater
- Mortise & tenon solid oak raised panel cabinet doors (cathedral uppers)
- Neo angle shower w/glass door (28RLDS, 33RLDS and 35RLTS)
- Built in medicine cabinet & mirror in bath
- Jalousie windows
- Mini-blinds throughout
- Systems monitor panel
- Power bath vent
- Power range hood w/light
- Magic Chef® three burner high output range w/22" oven
- Large Dometic® double door refrigerator
- Microwave w/carousel
- TV antenna w/booster
- Satellite Prep
- Cable hook-up
- Bi-fold shower door
- Lift-up beds w/gas struts (per floor plan)
- Porcelain kitchen sink
- 30lb. double LP tanks w/auto changeover
- LP tank cover (on trailers)
- Rear bumper w/sewer hose carrier
- Chrome bumper cover
- Hitch light
- Sink covers
- TV shelf and outlet in bedroom
- Oak spice and knife rack
- Positive cabinet door catches
- Oak edged fully laminated countertops
- Porch light w/interior switch
- Towel ring and brass finished toilet paper holder
- Step light - Main entrance

- Interior access door under dinette
- Pots and pans drawer under dinette
- Oak magazine rack
- Wainscoting
- Solid oak drawer fronts w/pine sides
- Manual pump override on all slide models
- 12 volt decor light in slide-room
- Extra-large picture window in slide-room dinette
- Triple step w/9" riser (slides only)
- Vented side windows in slide-outs

CONSTRUCTION

- A&E 8500 side awning
 - 5/8" plywood tongue & groove floor decking
 - 5" truss roof rafters
 - 3/8" roof decking (entire roof)
 - 2" x 3" floor joists 12" on center
 - R-7 insulation throughout (floors, walls & ceilings)
 - Galvanized steel wheel wells w/fiberglass insulation (except slide-outs)
 - Radial tires
 - Flush clamp ring windows w/Radius corners
 - Plywood constructed dinette & bed bases (2" x 2")
 - 2" x 2" wall studs 16" on center
 - 10" I-beam frame (slide-out models only) 6" box tube frame (non-slide-out models)
 - Automotive style fender skirts
 - Dewald hydraulic slide system w/manual override -
- #### FLUSH FLOOR
- Enclosed gooseneck (5th wheels only)
 - Finished interior bed bases
 - Rolled side metal on all slide-out models

SECURITY & SAFETY

- Flush door latch w/integral dead bolt lock
- Smoke detector
- Fire extinguisher
- LP leak detector
- Screen door w/safety latch
- Electric brakes
- GFI receptacle kitchen & bath
- Safety chains (trailers)

MAINTENANCE

- ABS tub w/one piece surround (per floor plan)
- One-piece fiberglass garden tub (per floor plan)
- One-piece fiberglass shower stall (per floor plan)
- Baked-on enamel graphics exterior (std. units)
- TPO roof (12 yr. warranty)
- Fiberglass rock guard awning (on models w/front windows)

- Awning drip rail w/downspout
- Water heater by-pass

FOREST RIVER ADVANTAGE

- Mattress upgrade
- CD/cassette stereo system
- Water filter system
- Overhead cabinets in slide
- Fantastic fan in bath
- 6+2 Forest River sound systems
- Decor light dinette (slide-outs only)

POPULAR OPTIONS

- Skylight over tub
- Bedroom wardrobe option(s)
- Sofa hide-a-bed (slide-outs only)
- Stabilizer jacks
- Spare tire, carrier and cover
- Patio door w/vertical blinds (per floor plan)
- Power jacks
- Outside shower
- Solid oak facing around slide-out(s)
- Fiberglass exterior
- Washer/Dryer combination (per floor plans)
- Bedroom slide-outs (per floor plans 5th wheels only)
- Interior light package upgrade
- Range cover
- Extra large double door refrigerator
- Raised refrigerator door oak insert
- Large exterior storage sofa
- Small exterior storage dinette
- Glass garden tub/shower door
- Bar stools
- Second drawer under dinette
- Phone jack
- Roof rack & ladder
- Twin beds
- Ceiling fan (FW's only)
- Free standing dinette with 4 chairs
- Glider recliner
- Insulation foam core (std. units only)
- 15K A/C IPO 13.5K
- Water heater 10 gal. gas/electric DSI
- 6,000 pound axles w/6 lug tires (all 38' trailers)
- Day/Night shades
- Front and rear caps (FW's only)
- Heated holding tanks
- Rear double bed w/bunk (per floor plan)

its best!

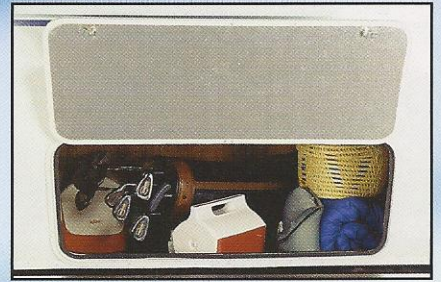
30RLSS shown in Sage decor.

Beauty with a purpose describes the Sandpiper™ kitchen. It's designed to be highly functional with all the things you'd expect in a well-equipped kitchen.

affordable beauty

**Travel Trailers
& Fifth Wheels**

30FKSS shown in Mauve decor.



New Super Storage compartment on select models.

Have it your way! Select from multiple fabrics and carpets to complete your decor.

Carpet

Upholstery

Accent Fabrics

Bedspreads

Drapes

Mauve



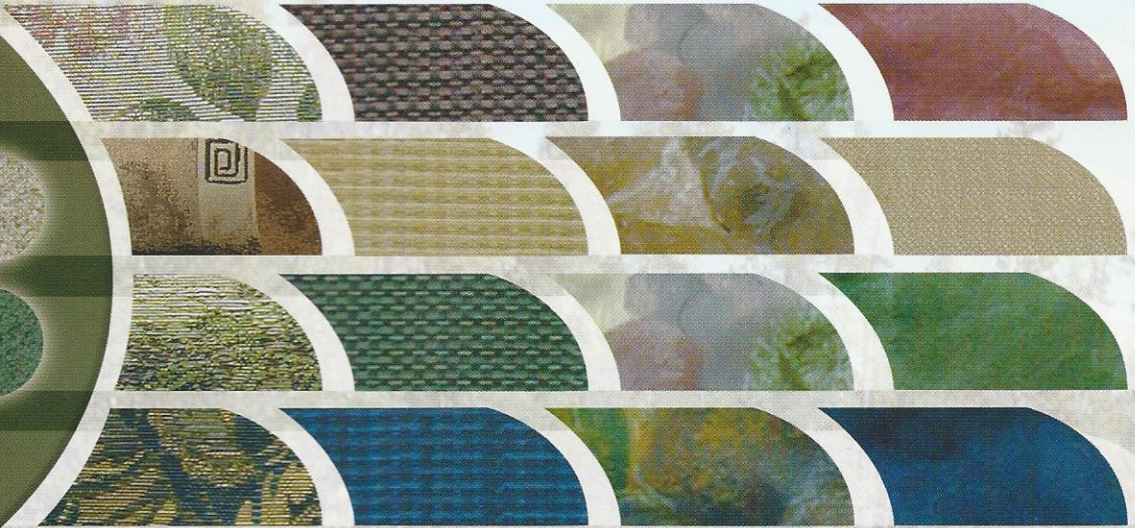
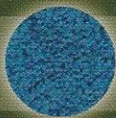
Tan



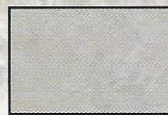
Sage



Blue



Long recognized by consumers and our competition alike for quality, innovative floor plans, and price sensitivity, the Sandpiper™ by Forest River makes its move to satisfy today's educated buyer. Sandpiper™ not only has obvious luxury amenities, but also retains the hidden values that go into every Forest River model and makes the difference when it comes to making the right choice.



Wallboard



Paneling

**The Two Forests of Forest River...
Forming Relationships with Nature**

Forest River, Inc. is helping to preserve America's wilderness areas for the use and enjoyment of our customers and future generations. With every Forest River recreational vehicle purchased, a tree will be planted in the buyer's name in one of America's national forests.

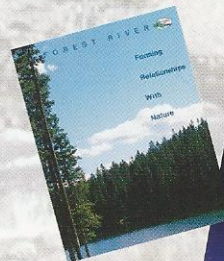


3010 College Ave. • P. O. Box 124 • Goshen, IN 46527
Phone: 219-533-5934 • Fax: 219-533-6085
www.forestriverinc.com



Printed on recycled paper

JERRY'S TRAILERS & CAMPERS
2601 S. 13th St.
Norfolk, NE 68701
(402) 371-1306



All illustrations and specifications contained in this literature are based on the latest product information at time of publication. Forest River reserves the right to make changes in prices, colors, materials, equipment and specifications at anytime without notice and assumes no responsibility for any error in this literature. All units are shipped E.O.B. Goshen, Indiana. CONSULT YOUR LOCAL DEALER FOR WARRANTY INFORMATION.