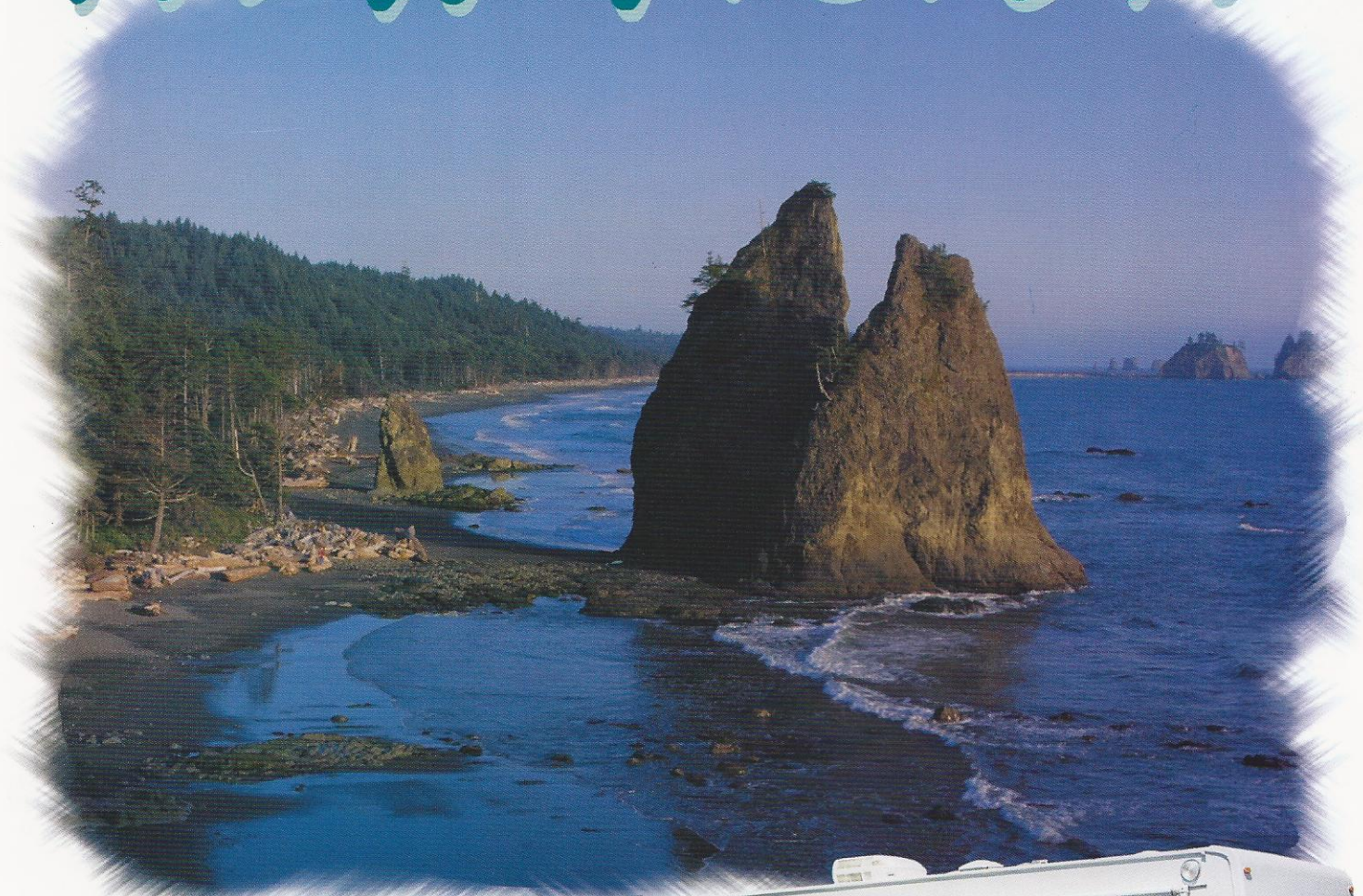


FLOORPLANS

2002

K-Z, Inc.

NEW VISION

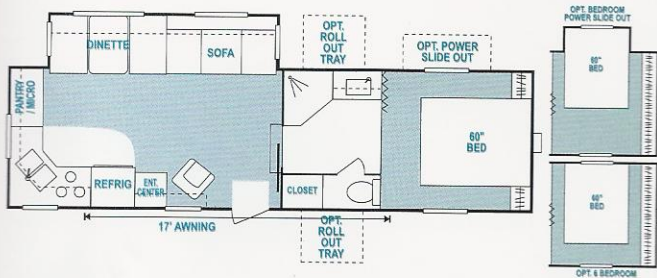
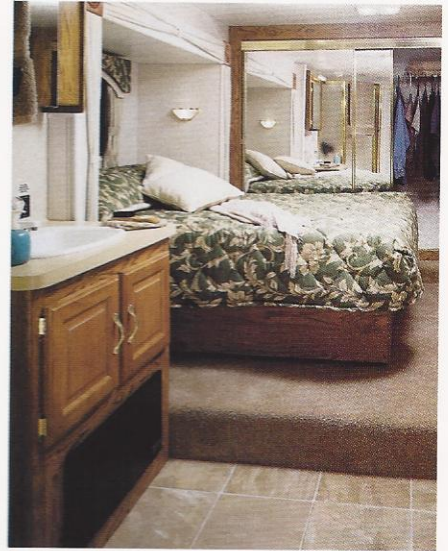


BUILDING QUALITY AND FUN FOR OVER 30 YEARS



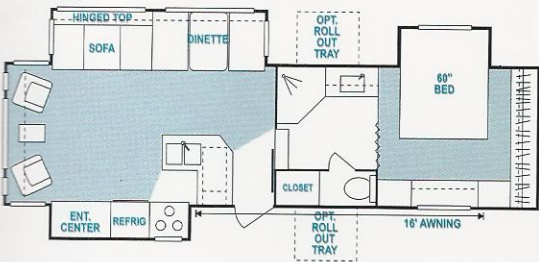
STANDARD EQUIPMENT

- Flush Floors
- 6 Gallon DSI Water Heater
- Armstrong Residential Linoleum (includes 10 yr. warranty)
- Straight Roof Line
- Wood Frame Construction
- Deluxe Swivel Rocker
- Solid Oak Refrigerator Panel
- Residential Innerspring Mattress
- Acrylic Sink Cover
- Raised Oak Cabinet Doors w/ mortise tendon joints
- One Piece Rubber Roof
- Gas Props On Bed Base
- 38 oz. Scotch Guarded Residential Carpet
- Water Heater By-Pass Kit
- Double Door Refrigerator
- 1 Piece Fiberglass Shower
- Glass Shower Door
- Stereo - CD
- 13,500 BTU Ducted Air Conditioner
- TV Antenna w/ Booster & 2 Jacks
- Awning
- Microwave
- Monitor Panel
- Tinted Windows
- Large 22" Oven
- 30 LB LP Bottles
- Cable Hook Up
- Deluxe Range Hood
- Overhead Cabinets above sofa and dinette in PSO



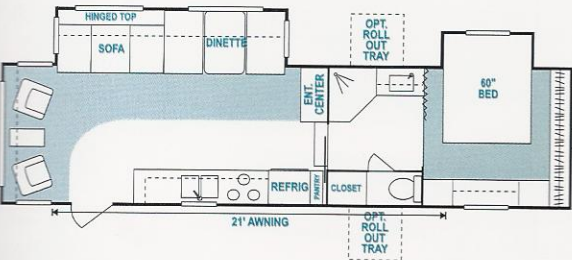
3051P - available in wood or aluminum frame

UWV (Unloaded Vehicle Wt.)*	8950	Interior Height	90"	Water Cap. (gal.)	55
Dry Hitch Wt.	1760	Exterior Width	96"	Waste Water Cap. (gal.)	53
Dry Axle Wt.	7190	Exterior Length	32'	Gray Water Cap. (gal.)	53
NCC (Net Carrier Capacity)	2810	Exterior Height	148"	LP Gas Cap. (lbs.)	60
GVWR	11760	Refrigerator (Cubic FT)	6	Furnace BTU's (1,000's)	30
		Water Heater Cap. (gal.)	6	Tire Size	15"



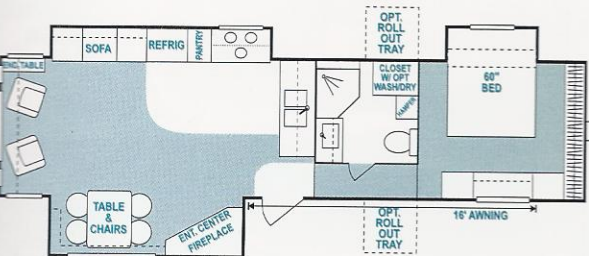
3158Px3 - available in wood or aluminum frame

UWV (Unloaded Vehicle Wt.)*	11120	Interior Height	90"	Water Cap. (gal.)	55
Dry Hitch Wt.	2220	Exterior Width	96"	Waste Water Cap. (gal.)	53
Dry Axle Wt.	8900	Exterior Length	32'10"	Gray Water Cap. (gal.)	53
NCC (Net Carrier Capacity)	2760	Exterior Height	148"	LP Gas Cap. (lbs.)	60
GVWR	13880	Refrigerator (Cubic FT)	6	Furnace BTU's (1,000's)	30
		Water Heater Cap. (gal.)	6	Tire Size	16"



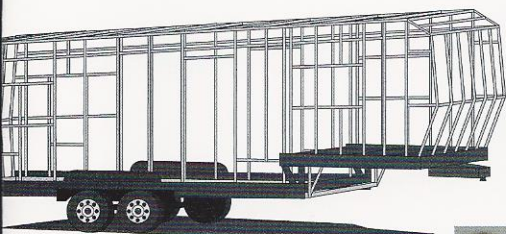
3253Px2 - available in wood or aluminum frame

UWV (Unloaded Vehicle Wt.)*	9500	Interior Height	90"	Water Cap. (gal.)	55
Dry Hitch Wt.	1750	Exterior Width	96"	Waste Water Cap. (gal.)	53
Dry Axle Wt.	7750	Exterior Length	33'	Gray Water Cap. (gal.)	53
NCC (Net Carrier Capacity)	3000	Exterior Height	148"	LP Gas Cap. (lbs.)	60
GVWR	12500	Refrigerator (Cubic FT)	6	Furnace BTU's (1,000's)	30
		Water Heater Cap. (gal.)	6	Tire Size	16"



3354Px3 available in wood or aluminum frame

UWV (Unloaded Vehicle Wt.)*	11320	Interior Height	90"	Water Cap. (gal.)	55
Dry Hitch Wt.	1920	Exterior Width	96"	Waste Water Cap. (gal.)	53
Dry Axle Wt.	9400	Exterior Length	35'10"	Gray Water Cap. (gal.)	53
NCC (Net Carrier Capacity)	2560	Exterior Height	148"	LP Gas Cap. (lbs.)	60
GVWR	13880	Refrigerator (Cubic FT)	6	Furnace BTU's (1,000's)	30
		Water Heater Cap. (gal.)	6	Tire Size	16"



OPTIONAL ALL ALUMINUM WELDED STRUCTURE



TRASH BIN OPTION



OPTIONAL CEILING FAN

HOME ENTERTAINMENT CENTER OPTION W/ SLIDER SWIVEL SHELF



SURROUND SOUND OPTION



SIDE BY SIDE REFRIGERATOR OPTION



ASSIST GRAB HANDLE OPTION



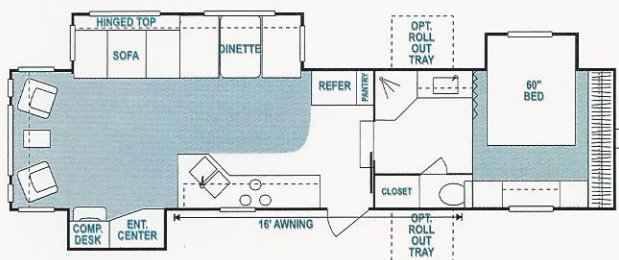
2 WAY ROLL OUT STORAGE TRAY OPTION



OPTIONAL EQUIPMENT

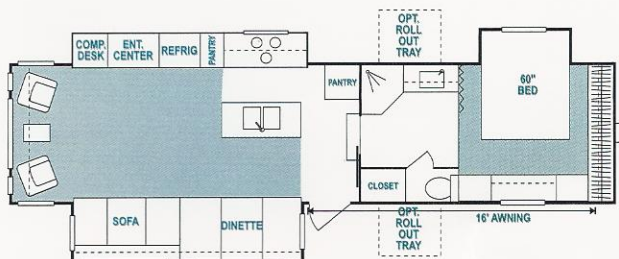
- Roll Out Tray
- Ottoman
- Satellite Dish
- Trash Bin
- TV Slider Swivel Shelf
- Plumb for Washer / Dryer
- Gel Coat Fiberglass
- Pull Out Pantry
- 50 Amp Service
- Assist Handle
- Aluminum Frame
- Recliner / Glider
- Exterior Shower
- Large Double Door Refrigerator
- Side by Side Refrigerator
- Sun Deck & Ladder
- Free-Standing Oak Table & 4 Chairs
- Table with leaf
- 15,000 BTU Air Conditioner
- Home Entertainment Center
- Surround Sound
- Water Filter
- Ice Maker
- Spare Tire
- Hide-A-Bed
- Fantastic Fan
- FlexFoil™ Reflective Insulation
- Skylight over Tub*
- Laundry Hamper*
- 6 Gal. Gas/Electric Water Heater*
- R14 Roof Insulation*
- Pleated Day-Night Shades*
- Black Water Tank Flush System*
- Shock Absorbers*
- Heated Holding Tanks*
- Enclosed Underbelly*
- Ceiling Fan*
- Security Lights*
- Stove Cover*
- Power Jacks*
- Stabilizer Jacks*
- Telephone Jack*
- Hi-Rise Faucet*

* - Included in a package



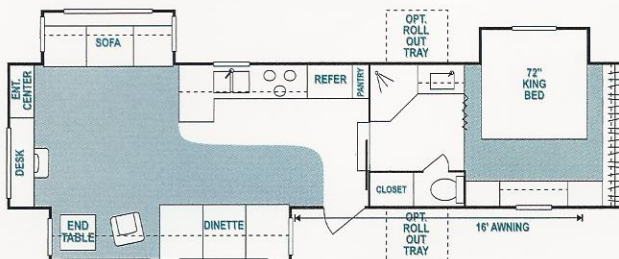
3452Px3 available in wood or aluminum frame

UVW (Unloaded Vehicle Wt.)*	11320	Interior Height	90"	Water Cap. (gal)	55
Dry Hitch Wt.	1920	Exterior Width	96"	Waste Water Cap. (gal.)	53
Dry Axle Wt.	9400	Exterior Length	35'10"	Gray Water Cap. (gal.)	53
NCC (Net Carrier Capacity)	2560	Exterior Height	148"	LP Gas Cap. (lbs.)	60
GVWR	13880	Refrigerator (Cubic FT)	6	Furnace BTU's (1,000's)	30
		Water Heater Cap. (gal.)	6	Tire Size	16"



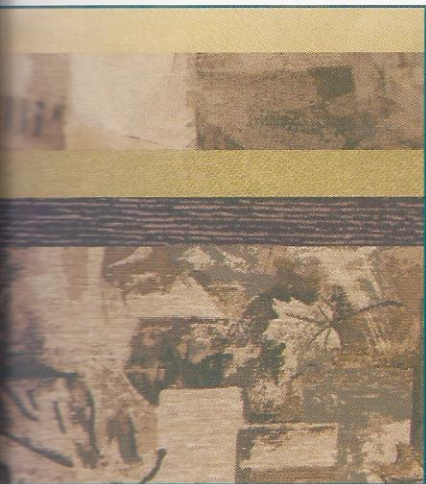
3453Px3 - available in wood or aluminum frame

UVW (Unloaded Vehicle Wt.)*	11640	Interior Height	90"	Water Cap. (gal)	55
Dry Hitch Wt.	1880	Exterior Width	96"	Waste Water Cap. (gal.)	53
Dry Axle Wt.	9760	Exterior Length	35'10"	Gray Water Cap. (gal.)	53
NCC (Net Carrier Capacity)	2240	Exterior Height	148"	LP Gas Cap. (lbs.)	60
GVWR	13880	Refrigerator (Cubic FT)	6	Furnace BTU's (1,000's)	30
		Water Heater Cap. (gal.)	6	Tire Size	16"

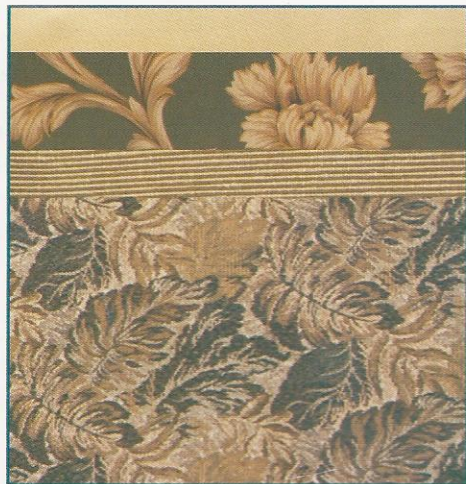


3557PRx3 - available in wood or aluminum frame

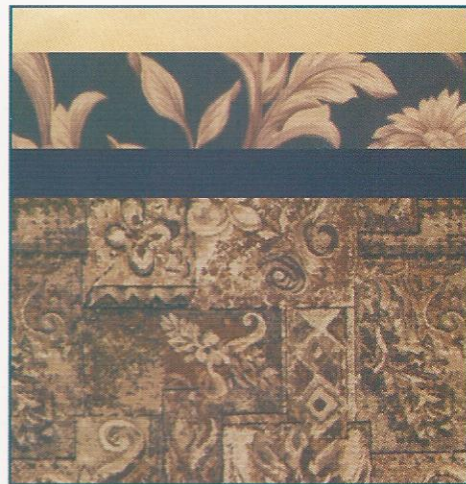
UVW (Unloaded Vehicle Wt.)*	11600	Interior Height	90"	Water Cap. (gal)	55
Dry Hitch Wt.	2200	Exterior Width	96"	Waste Water Cap. (gal.)	53
Dry Axle Wt.	9400	Exterior Length	36'10"	Gray Water Cap. (gal.)	53
NCC (Net Carrier Capacity)	2600	Exterior Height	148"	LP Gas Cap. (lbs.)	60
GVWR	14200	Refrigerator (Cubic FT)	6	Furnace BTU's (1,000's)	35
		Water Heater Cap. (gal.)	6	Tire Size	16"



PORTABELLO



WILLOW



NAVY



2 YEAR WARRANTY – The K-Z 2x2 Warranty is a manufacturer's warranty. Each K-Z product is warranted to the original purchaser for twenty-four (24) months from the original date of purchase. Coverage includes appliances, components, construction and chassis structure.

Our warranty is also transferable within the first two (2) years for a small processing fee. For a copy of the warranty with full terms and conditions, ask your local K-Z Dealer or visit our web site at www.kz-rv.com.

VEHICLE LOADING – Every effort has been made to provide the greatest number of options for the recreational owner. Each owner is responsible to select loads allowing the recreational vehicle to remain within the manufacturer's specified chassis weight limits. Do not overload the recreational vehicle.

DRY WEIGHTS are based on standard features only and do not include optional equipment. Carrying capacity is determined by subtracting UVW from GVWR and includes fluids, options and cargo. Liquid capacities and weights are approximations only.

NOTE: This information is intended as a guide only. Weights of individual vehicles are approximate. Consult your Owner's Manual for complete loading, weighing & towing instructions.



NEW VISION
K-Z Incorporated
 9270 West U.S. 20
 Shipshewana, IN 46565
 E-Mail kz@kz-rv.com
www.kz-rv.com

Dealer:

Plant Location: 1 Mile West of S.R. 5 on U.S. 20

Due to continued research and advances, manufacturer reserves the right to change specifications, design, price and equipment without notice, and assumes no responsibility for any error in this literature.