

# EVEREST

2002



Adventure Awaits You...

# EVEREST

## ALL-ALUMINUM CONSTRUCTED FIFTH WHEEL

Travel to any of your favorite destinations in total luxury and unsurpassed comfort. You will relax as you enjoy all the convenient amenities of home as well as the tasteful array of interior colors. Comfort awaits you in the spacious, residentially styled Everest.



This thoughtfully designed Everest entertainment center is angled for optimum viewing. The desk is computer friendly with an optional telephone/modem connection for your convenience.

Enjoy listening to music from surround-style speakers while you absorb the cozy warmth from your optional fireplace (343L).



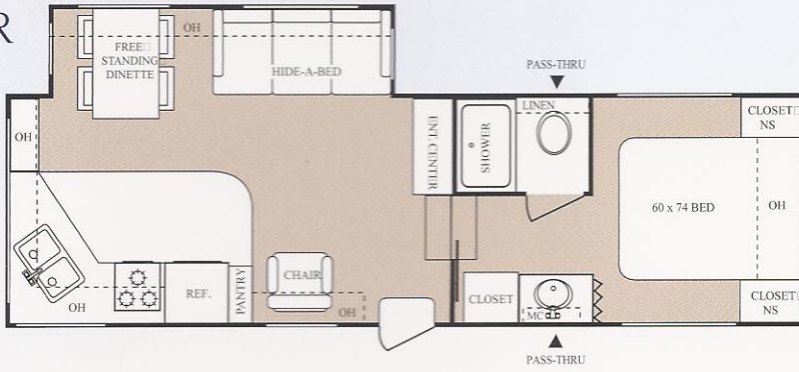


## No Details Have Been Missed

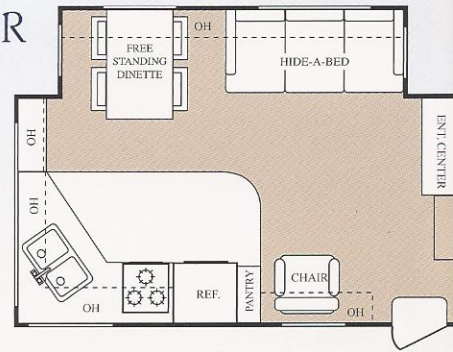
When you sit back in this lavish coach, you will notice the fine attention to detail, from the generous counter top space to the huge bay windows and sculpted carpet. Everest completes this living space with the highest quality, all wood cabinetry; which is actually screwed together, not stapled. Notice the real oak fascia accenting the ample overhead storage which is showcased by our designer lighting. The spacious slide rooms reach 6'4" to allow for maximum headroom and comfort. No matter what adventure awaits— Everest captures the ideals of luxury.

Certain floorplans will not accommodate these features.

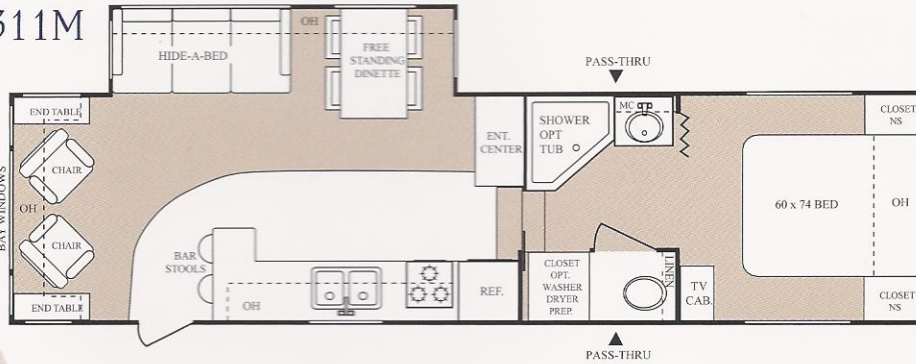
281R



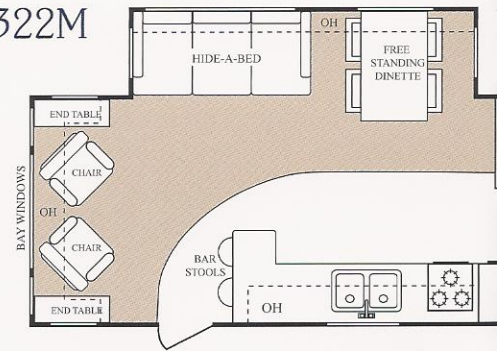
292R



311M



322M



## STRENGTH

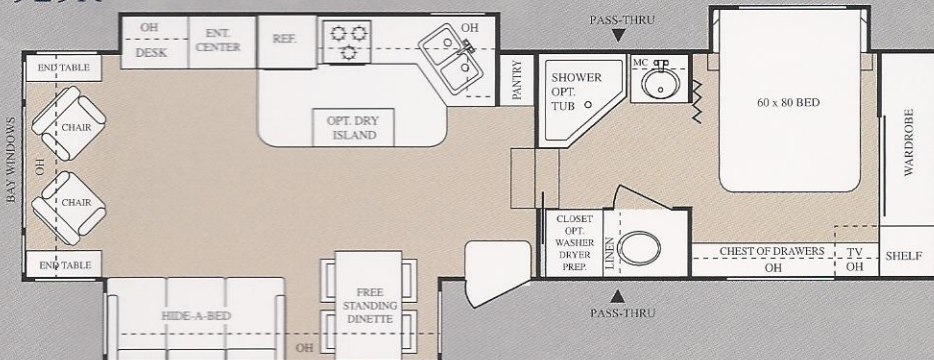
- 5-Layer Laminated Aluminum Framed Sidewalls—Designed for Maximum Strength and Towability
- 10" I-Beam Frame—Superior Structural Integrity
- All Aluminum Roof Rafters—Maximum Thickness for Total Support, Insulation, Sound Control
- Residentially Constructed Floors—2" x 3" Aluminum Studs Every 12 to 16 Inches on Center, 5/8" Seamless Decking

### EVEREST FIFTH WHEELS

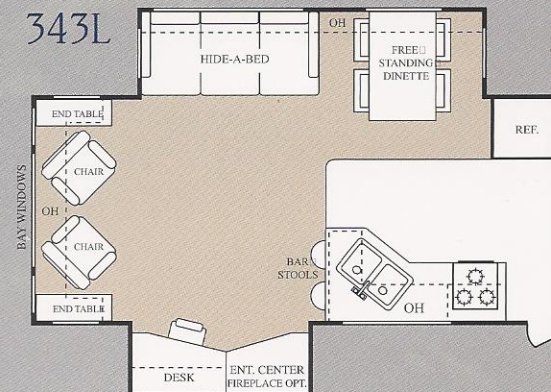
Models	281R	292R	293I	303I
GVWR	11400	12400	12500	13500
Dry Weight	8415	9215	9970	10800
Carrying Capacity	2985	3185	2530	2700
Hitch Weight	1230	2000	2070	2100
Exterior Length	30' 2"	33' 2"	32' 2"	32' 2"
Exterior Width	96"	96"	96"	96"
Fresh Water (gal.)	54	54	54	54
Waste Water (gal.)	40	40	40	40
Grey Water (gal.)	72	72	72	72
Tire Size	225	IT215	IT215	IT215
	75R-15(D)	85R-16(L)	85R-16(L)	75R-15(D)
Height with A/C	150"	150"	150"	150"

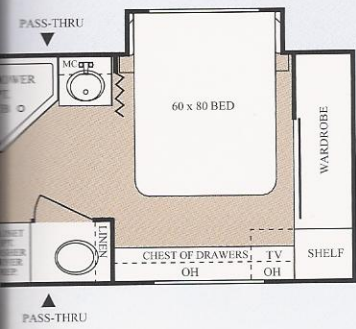
### Single Level Bedroom And Bathroom

323K

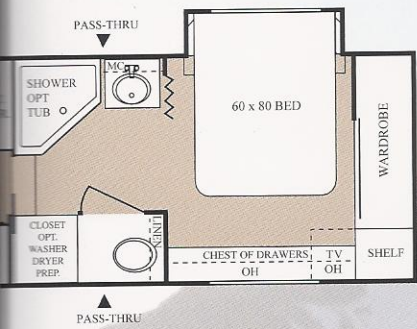
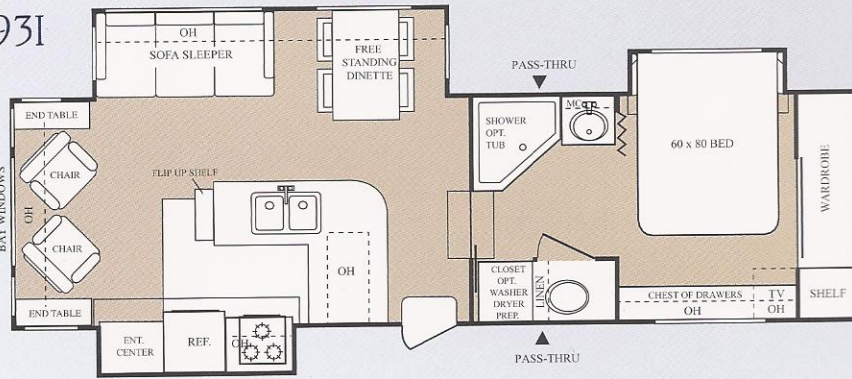


343L

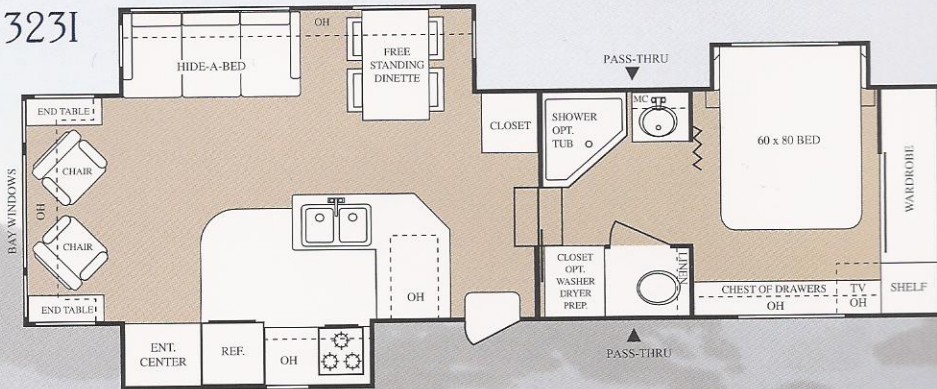




2931



3231

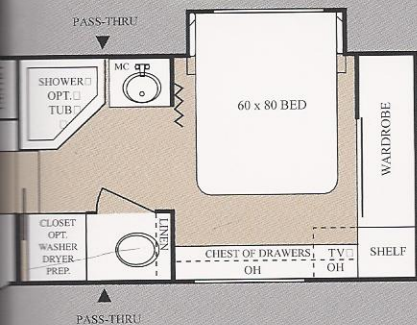


4	322M	3231	323K	343L	363K
0	12600	14200	14000	14100	14200
3	9775	10495	10615	10730	11415
7	2825	3705	3385	3370	2785
0	2190	2230	2040	2080	2170
2	35' 2"	35' 2"	35' 4"	37' 5"	38' 0"
	96"	96"	96"	96"	96"
	54	54	54	54	54
	40	40	40	40	40
	40	72	40	72	40
5	LT215	LT235	LT235	LT235	LT235
5(D)	85R-16(E)	85R-16(E)	85R-16(E)	85R-16(E)	85R-16(E)
7	150"	150"	150"	150"	150"

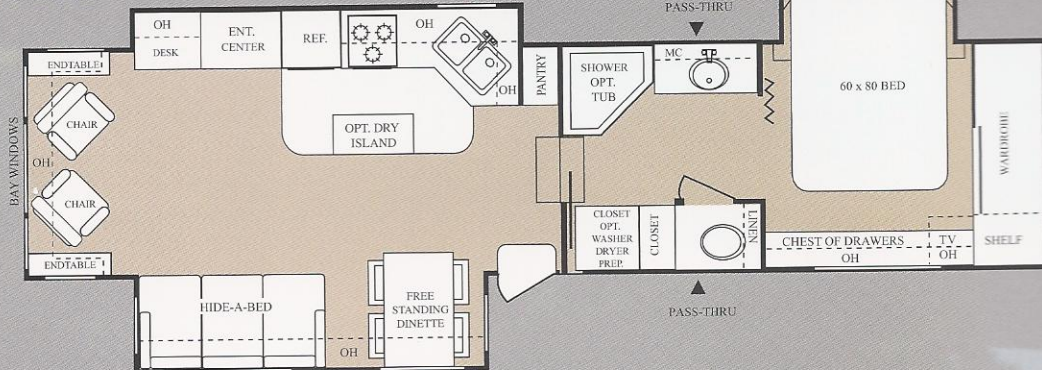
## STRUCTURE

- Fully Enclosed Underbelly—Heated and Insulated Holding Tanks
- One-Piece Radius Wrapped EPDM Rubber Roof—Provides Easy Maintenance and Rain Water Run off—12 Year MFR's Warranty
- Easy To Lube Axles—Convenient Maintenance
- Shock Absorbers—For Easy Ride
- Hydraulic Slide Room(s)—Strong & Durable! Similar System as Found on Airplanes and Heavy Duty Construction Equipment

Suite Standard on Every Floorplan!



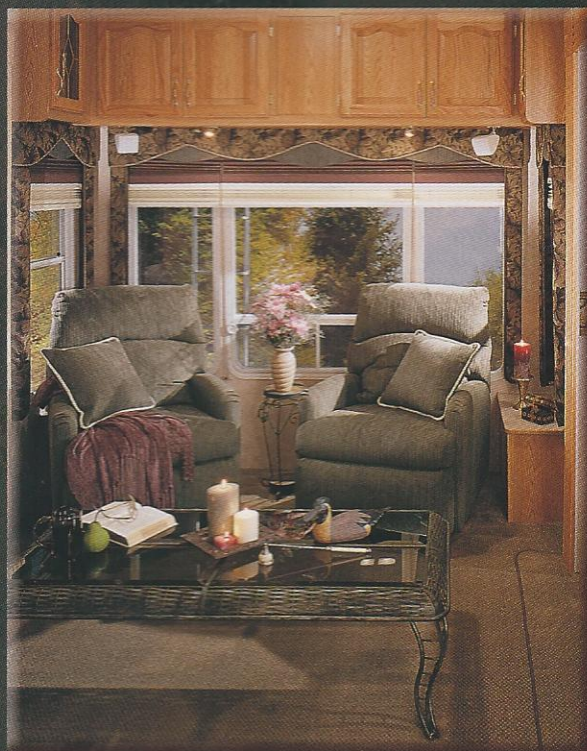
363K





(323K, 363K; Optional Island Kitchen)

Everest offers you ultimate convenience with many kitchen plans to choose from. All kitchens have a 22" oven, an easy-to-reach Space-Maker microwave, raised oak-panel refrigerator front, and rich, wood-plank-style flooring.



You'll spend many hours relaxing in this gracious setting and enjoy the scenic view from your panoramic bay windows (available on most models).

## KITCHEN STANDARDS

- Hardwood Raised-Panel Cabinet Doors
- Wood Plank Floor in Kitchen
- Hardwood Refrigerator Front
- Double-Door Refrigerator
- Solid Oak Wood Edge Countertop in Kitchen
- Space-Maker Microwave Oven
- 3-Burner Range with Oven
- Folding Range Cover
- Lighted Power Range hood
- Fluorescent Light in Kitchen
- Single-Lever Kitchen Faucet
- Double Bowl Kitchen Sink
- Free-Standing Dinette and 4 High-Back Chairs

## KITCHEN OPTIONS

(N/A on all models)

- Booth Dinette
- Extra Sink Cover
- Pull-Out Pantry
- Large Double-Door Refrigerator with or without Ice-Maker
- Water Purifier
- Island Kitchen Base (models 323K & 363K only)

## LIVINGROOM STANDARDS

- Designer Clock
- Sculpted Residential Carpet
- Flush Floor Slide-Outs with 6'4" Headroom
- Floor Ducted Heat
- Mini-Blinds
- Swivel Rockers
- Ceiling Paddle Fan with Light
- White Clamp-Ring Windows
- TV Antenna
- Bookshelf AM/FM Stereo with 5-Disc CD Player and Surround-Style Speakers
- Cable TV Hook-Up / Satellite Dish Ready
- Hide-a-Bed

## LIVINGROOM OPTIONS

(N/A on all models)

- Electronics Package (TV/VCR)
- Fireplace (343L)
- Recliner Glider
- Swing-Arm Light in Slide-Out
- Phone Jack
- Day/Night Shades
- Coffee Table (323K, 343L, 363K)

Certain floorplans will not accommodate these features.



**New in 2002!**  
Featuring the Unified Master Bedroom  
and Bathroom Suite!  
(No Step)



Everest's impressive bathroom has an easy step-in garden shower, residential six-panel doors, as well as ample storage space. The perfect accommodations for an extended trip!

## BATH and BEDROOM STANDARDS

- Create-a-Breeze Roof Vent
- Garden Shower with Glass Shower Door (Most Models)
- Skylight in Bathroom
- Power Vent in Bath
- Foot Flush Toilet
- 6 Panel Bath Doors
- Residential Queen Size Bed (60" x 80")
- Innerspring Mattress
- Bedspread and Shams
- Single Level Floor in Bathroom and Bedroom Suite (No Step)

### BATH and BEDROOM OPTIONS (N/A on all models)

- 13,500 BTU A/C in Bedroom (Non-Ducted)
- Wire and Brace for 2nd A/C in Bedroom (A/C not included)
- Pillow Top Innerspring Mattress (Residential Queen 60" x 80"—Bedroom Slide Models Only)
- Washer-Dryer Prep (N/A on model 281R)
- Porcelain Toilet
- Garden Tub I.P.O. Shower (N/A on model 281R)



This attractive slide-out bedroom features a full 60x80 queen-size bed with generous storage beneath. You will notice Everest's extras touches like the cabinet door which accesses the closet shelves, a hidden laundry chute and leaded glass cabinets, to name a few.

## Full Aluminum Super Structure for Strength and Ease of Towing

Aluminum—Walls·Roof·Floor



Another expertly planned Everest detail allows you plentiful storage in the optional easy-access slide-out pantry.

### MORE OPTIONS

(N/A on all models)

- 10 Gal. Gas/ Electric Water Heater with DSI
- Under-Carriage Spare Tire Kit
- Selector Valves For Slide-Outs
- Aluminum Wheels
- High-Gloss Fiberglass Side-Walls
- LP Generator Prep (N/A on model 281R)
- Heat Strips for Holding Tank  
(Extra Protection- Heated Holding Tanks Std.)
- Scare Lights
- 15,000 BTU A/C IPO 13,500
- 50-AMP Service with Detachable Cord
- Double Insulation- Roof and Floor
- Slide-Out Awnings
- Folding Assist Handle (N/A on models 323K & 363K)
- Tinted Safety Glass Windows
- Exterior Shower
- 16" Wheel Upgrade on 281R and 311M

Everest is a product of the Elkhart Division of:



28163 C.R. 20 West, Elkhart, IN 46517  
(219) 522-3035

[www.keystone-elkhart.com](http://www.keystone-elkhart.com)



Every Everest fifth wheel features a full gel-coat gooseneck cap and 3-sided access to a huge exterior storage compartment with a cargo net.



Everest's hidden laundry chute helps keep your bed & bath area neat and clean. You can quickly send dirty clothes and linens into the hamper bag waiting below.

# ALUMI-CORE

## SUPER STRUCTURE

WALLS FLOOR ROOF

### EXTERIOR STANDARDS

- New Streamlined Profile
- Gel-coat, Fiberglass Gooseneck Cap, Front Cap, and Rear Cap
- Alumi-Core (Full Aluminum Super-Structure)
- Stunning Exterior Graphics and Luxurious Interior Decors
- Cargo Net in Exterior Storage Compartment
- Huge Exterior Storage Compartment with Cargo Net
- Patio Awning
- Rear Ladder
- Gutters with Rain Spouts
- Electric Front Jacks
- Shock Absorbers
- Stabilizer Jacks
- Easy To Lube Axles
- 16" Tires and Wheels  
(standard on most models)
- Hydraulic Pump Override
- Monitor Panel
- LP Leak Detector
- Enclosed and Heated Underbelly with Insulated Tanks
- No-Fuss Flush System for Waste Tank
- Water Heater Bypass Kit
- Two 30 lb. LP bottles with Auto Switch-Over
- 6-Gallon Gas/Electric Water Heater with DSI
- 13,500 BTU A/C- Ducted

Certain floorplans will not accommodate these features.

For More Information,  
Contact Your Everest Dealer:

**JERRY'S TRAILERS & CAMPERS**  
2601 S. 13th St.  
Norfolk, NE 68701  
(402) 371-1306

Go RVing  
Life's A Trip™

Member  
**RVIA**  
RECREATION VEHICLE  
INDUSTRY ASSOCIATION

Product information is as accurate as possible at the time of publication. Features, floorplans, and specifications are subject to change without notice. Some features listed and shown are optional. 10/01