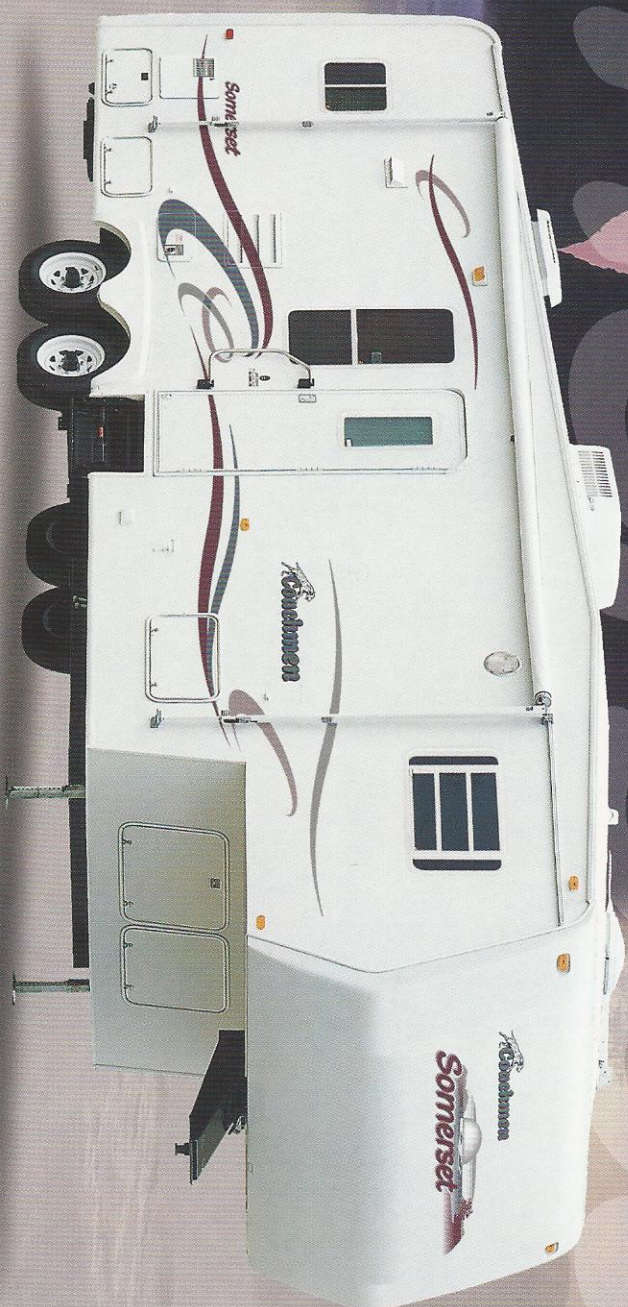
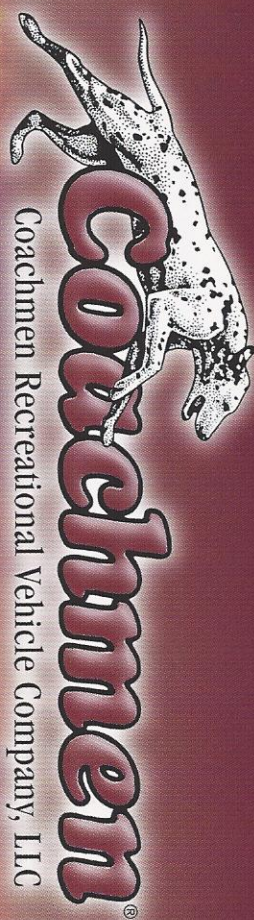
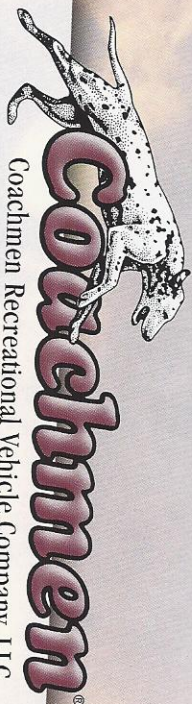


2002 Somerset FIFTH WHEELS by COACHMEN RV



"LEADER TO THE GREAT OUTDOORS"



Coachmen Recreational Vehicle Company, LLC

Upscale

Luxury...with a down to earth price.

As we enter a new century, Americans' love for travel continues to grow. Motivated by rediscovery of family, self-renewal and a desire to make the most of every day, we respond to the call of the open road like never before. Few fifth wheel RV's answer that call like the Coachmen Somerset.

A unique combination of cutting-edge technology and old-fashioned value, this is an RV built to go the distance.

Whether you answer the call of the road by traveling coast to coast or by visiting the nearest campground, Somerset's beauty, function and styling says "you've arrived". This is the upscale luxury RV with a down to earth Coachmen price.

Somerset's sleek fiberglass sidewalls make an excellent impression on the road while it's rugged aluminum framed structure provides outstanding strength and durability. The only word that adequately describes it is: "inspired". Spacious floorplans with luxury accommodations let you make the most of your every moment - no matter how or where you choose to spend it.



A comfortable nights sleep awaits you on the Somerset's deluxe queen bed.



The Somerset 294RKS offers plenty of room and residential appeal.

Features Galore

A complete photo album would be required to fully display the many features and innovations of the Somerset Fifth Wheel. Here are just a few of the many features available from Coachmen RV.



The well equipped galley offers: a 21" oven, residential size microwave, a durable composite sink with single lever faucet, beautiful hardwood cherry cabinetry, optional hardwood refrigerator inserts and a convenient paper towel holder option.



This elegant bath area features upgraded flooring, wood edge countertops and a private lavatory.

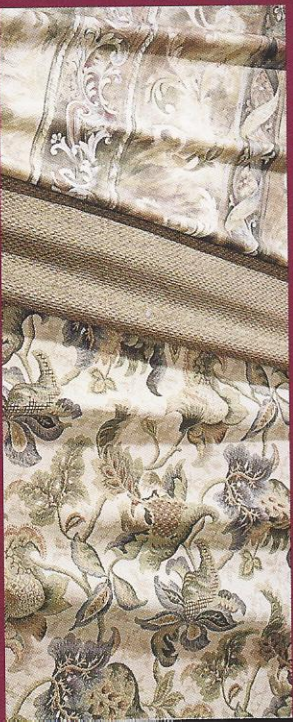


An optional phone and jack make it easy to stay in touch. Call your friends, or plug in a laptop to send an e-mail.

Decor Selections

Dazzling interiors feature skillfully coordinated upholstery and window treatments. Coachmen RV chooses only top-grade fabrics wear-dated as heavy-duty. These fabrics have been tested for durability beyond 15,000 double rubs (in and out action) to simulate heavy usage. An average chair in an American home is subjected to only 3,000 double rubs per year.

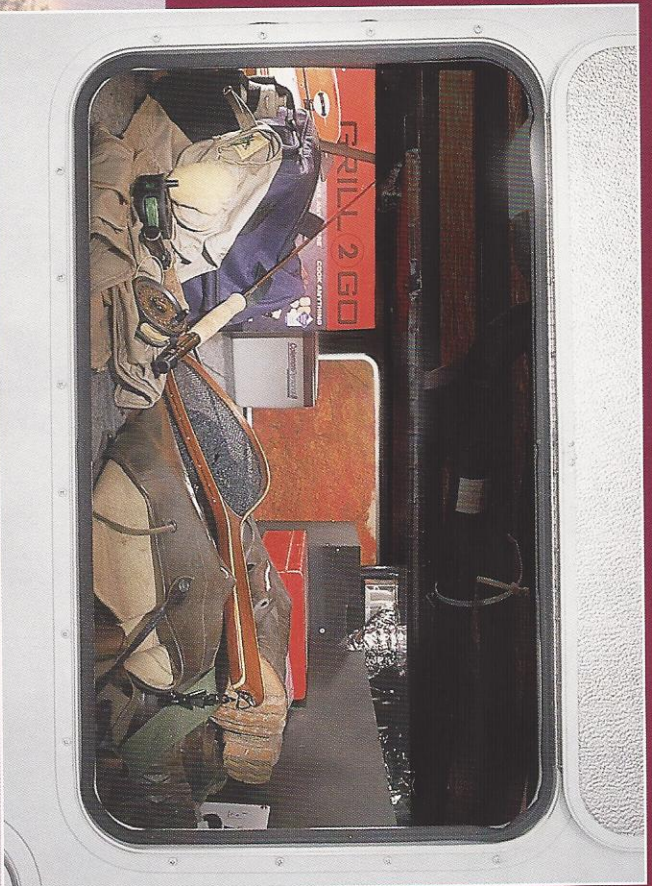
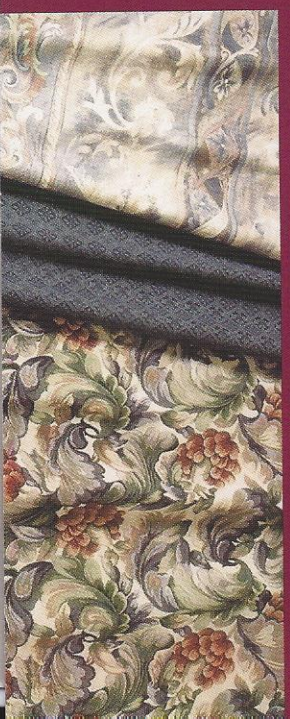
Classic Tradition



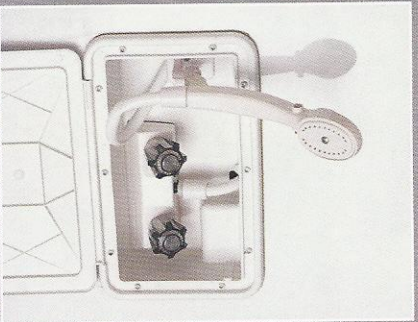
Sierra Linen



Timeless Blue



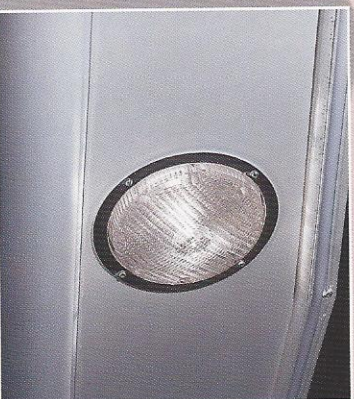
Huge pass through storage makes stowing gear a breeze, while the rigid steel framed floor provides extra durability for years of use.



The optional outside shower is convenient and stores easily with its retractable hose.



A convenient large exterior grab handle makes for ease of entry and exit.



Optional security lights let you rest comfortably. Mounted high up on the exterior of the coach, they provide great illumination on both sides.

Outstanding Service and Warranty

For over 35 years Coachmen RV has been leading the RV Industry in product design, dependability and customer service support. We work very hard to have our products exceed your expectations. Equally important is the service that we provide during your ownership experience. Whether it be information about your unit, reliable warranties, or industry leading service support... Coachmen RV ranks second to no one.

A Company You Can Trust

Buckstopper Warranty

Your Owner's registration card and our famous Buckstopper Limited Warranty are your passport to worry free travel. Our nationwide network of approximately 300 authorized Coachmen Service Centers stand ready to provide you with courteous, dependable and timely service.

Two-Year Structural & Major Component Manufacturer's Warranty

In addition to your One Year Buckstopper Limited Warranty, you can travel with confidence knowing that select major structural components such as walls, ceilings, and floors are covered for two years by Coachmen's extended Structural Limited Warranty. Coachmen product also comes with a limited Two Year Major Component Manufacturer's Warranty on select components. Please refer to our



Optional Owner's Information Packet

Service Assistance

Coachmen's Service & Parts Department is staffed with trained professionals that are committed to satisfying your needs. Coachmen provides a toll free service number for your assistance and convenience. And for those rare instances that a replacement part is required for your coach, Coachmen RV provides a Priority Customer Parts Order program for overnight part shipments in critical repair situations.

Service Support Center Web Site

Presented as an option under the Coachmen RV Company web site (coachmenrv.com), this informative site offers:

- A Service Dealer Locator System
- Maintenance Information
- Troubleshooting Information
- Product Warranty Summary Information
- Customer "E-Assistance" Access
- And more...

Visit our site and see for yourself that Coachmen RV is committed to taking care of our customers.



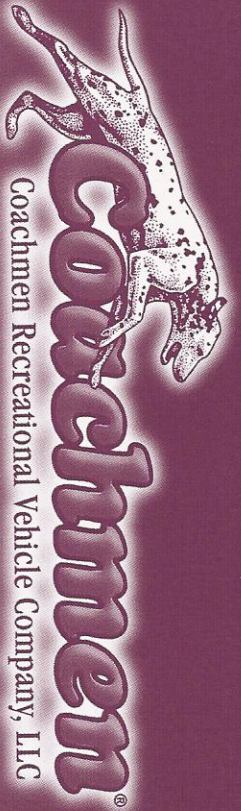
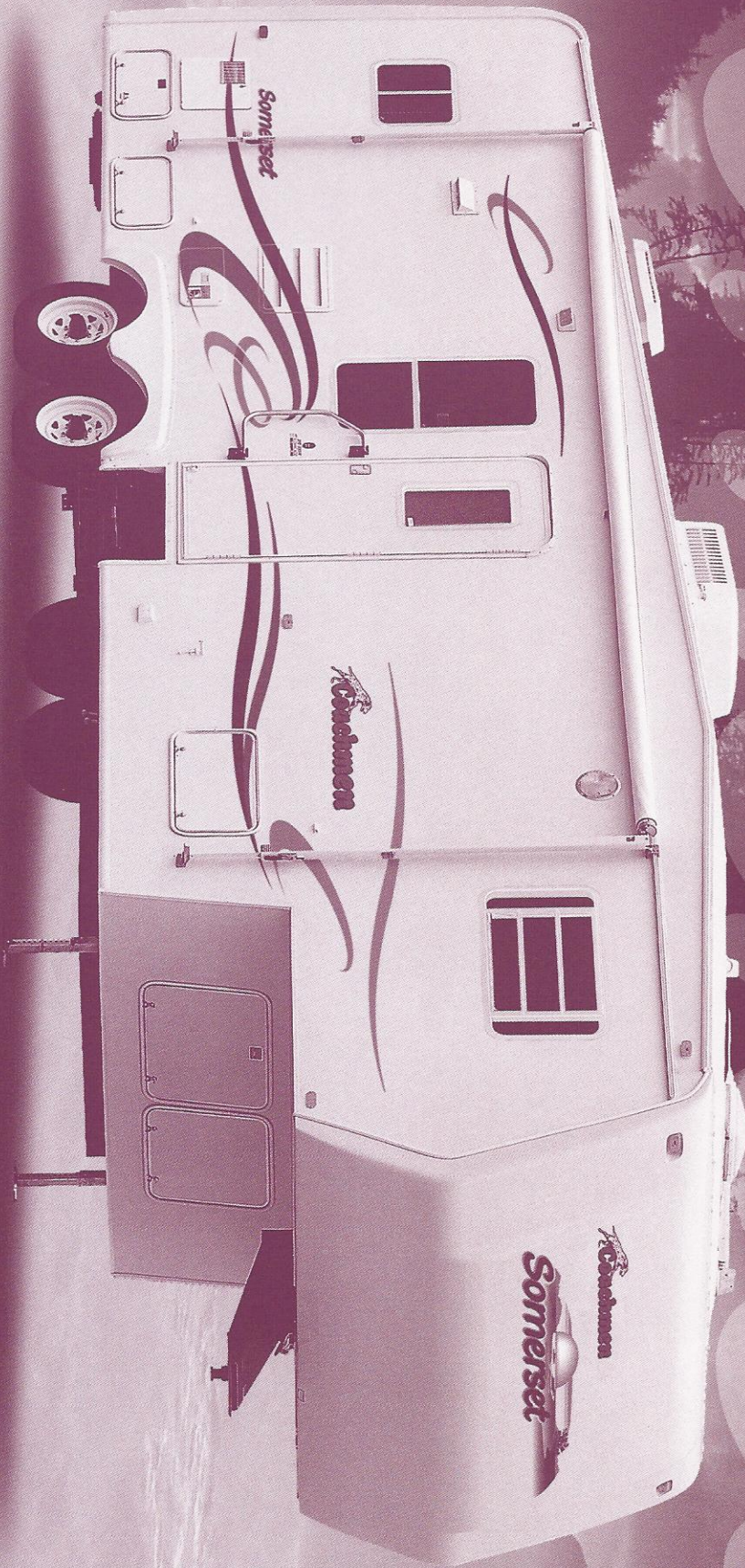
Coachmen RV features a complete parts and service center at the Middlebury, Indiana complex. Relax during your visit in our comfortable parts and service lounge.

Ultimate Satisfaction – First®

Coachmen RV owners regularly receive comprehensive surveys through our Ultimate Satisfaction – First (USI Program). USI questionnaires provide us with valuable information regarding our customers' products, as well as the purchase and ownership experience. Listening to our customers helps us achieve your...

"Ultimate Satisfaction – First".

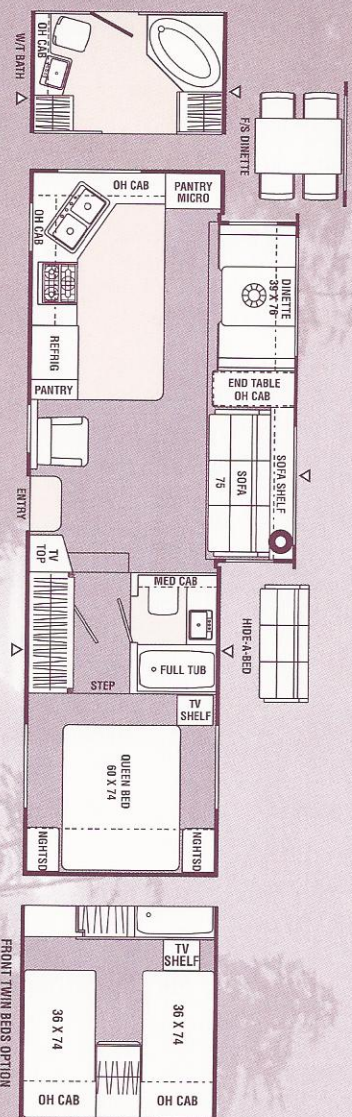
2002 Somerset FLOORPLANS & SPECIFICATIONS



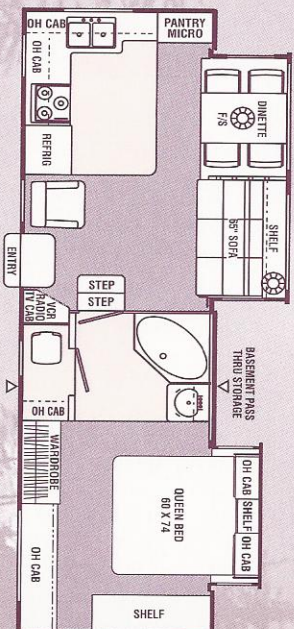
Coachmen Recreational Vehicle Company, LLC

2002 SOMERSET FIFTH WHEEL

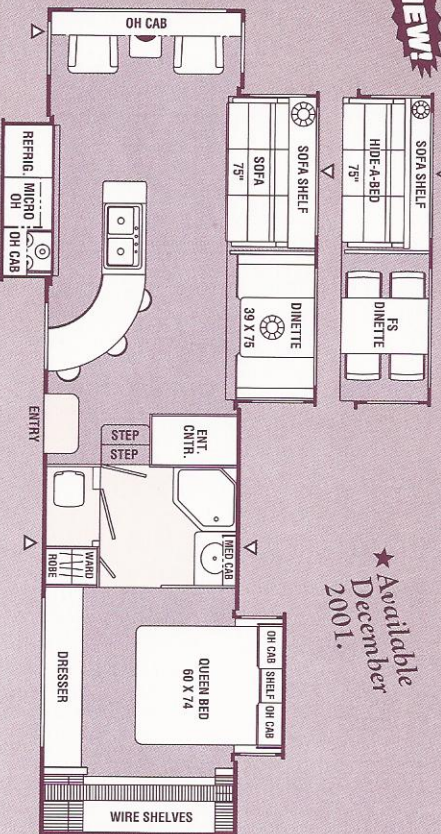
285rksw / Rear Kitchen / Slide Out / High Profile / Wide Body



294rks / Rear Kitchen / Slide Out / Wide Body

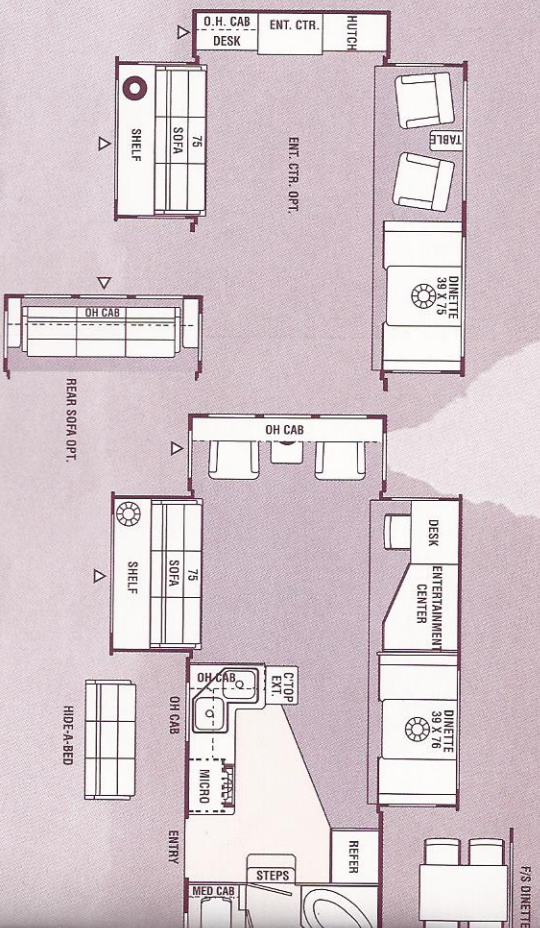


340iks / Island Kitchen / Slide Out / Wide Body

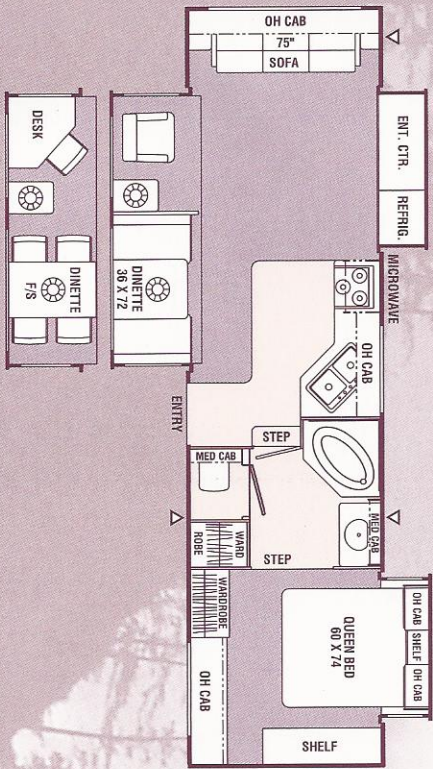


★ Available
December
2001.

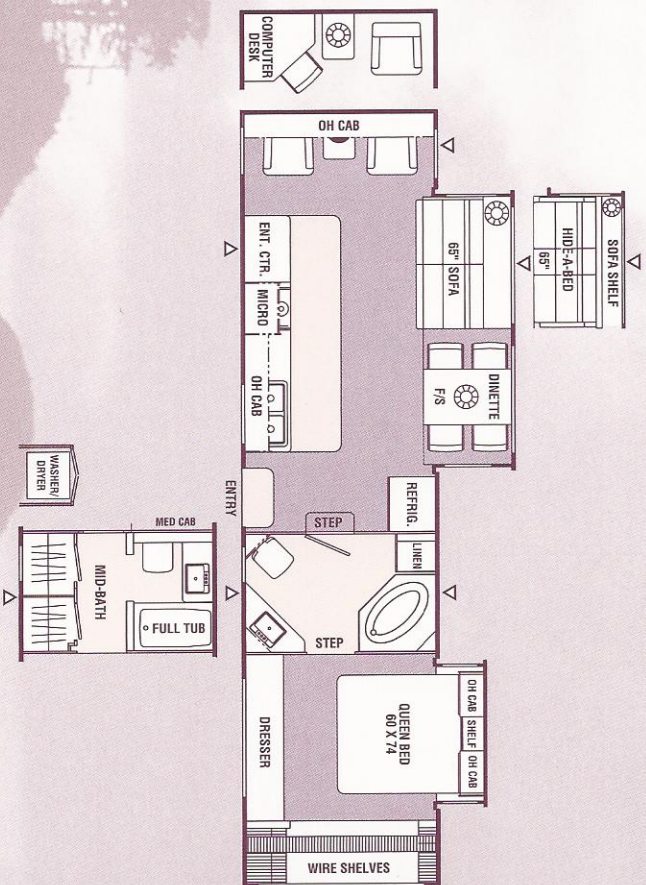
358rlts / Rear Lounge / Triple Slide Out / High Profile / Wide Body



318rlts / Rear Lounge / Triple Slide Out / High Profile / Wide Body

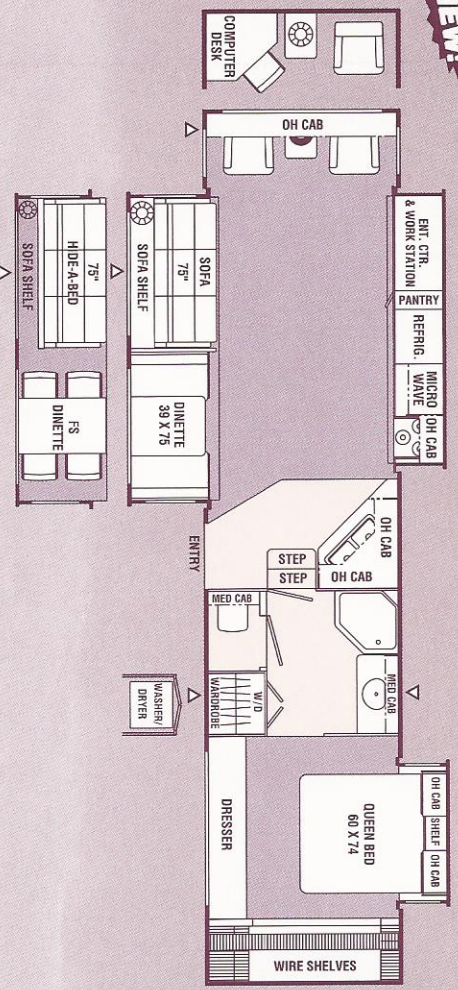


325rlts / Rear Lounge / Double Slide Out / High Profile / Wide Body



370rlts / Rear Lounge / Triple Slide Out / High Profile / Wide Body

NEW!



- INDICATES CARPETTING
- ▽ INDICATES OUTSIDE STORAGE LOCATION

2002 SOMERSET STANDARD FEATURES

INTERIOR AND DECOR

Velvet Cherry Cabinets
Hardwood Cabinet Doors
Residential Metal Drawer Glides
Carpet with Pad - Living Room & Bedroom
Mini Blinds - Throughout
Linoleum Flooring - Kitchen & Bath
Booth Dinette (Except 294RKS & 325RLS)
Free Standing Dinette (294RKS & 325RLS)
Jack Knife Sofa
Swivel Rocker
Cable TV Jack
TV Antenna and Rotor Package
TV Shelf - Bedroom
LP Leak Alarm
Trash Can
Pre-Wired for Satellite Dish
Techwood® Drawers
Pre-Wired for Phone
Bookshelf Stereo w/3CD Changer

GALLEY

Residential Size Microwave
3-Burner (High Output) Range with 21" Oven
Power/Lighted Range Hood
Flush Mount, Double Door Refrigerator
Monitor Panel
Composite Sink
Silverware Drawer (Except 318RLTS, 325RLS & 358RLTS)
Shoe Racks (Except 285RKS & 318RLTS)
Plastic Coated Steel Shelves (Except 285RKS & 318RLTS)

SLEEPING

Queen Bed
Deluxe Innerspring Mattress - 312 Coil
Bedspread and Pillow Shams
Bedlift System on Island QB

ELECTRICAL/HEATING/AC

30-Amp. Service (Except 358RLTS & 370RLS)
50-Amp. Service (358RLTS & 370RLS)
GFI Circuit
Outside GFI Receptacle
Patio Light
Off-Door-Side Utility Light
Hirsch Light
Double 30 LB LP Bottles w/Auto Change-Over

ELECTRICAL/HEATING/AC (Continued)

31,000 BTU E.L. Furnace (285RKS)
35,000 BTU E.L. Furnace (294RKS, 318RLTS & 325RLS)
40,000 BTU E.L. Furnace (340RKS, 358RLTS & 370RLS)
In-Floor Ducted Heat
13,500 BTU Ducted Roof Air Conditioner

BATH AND WATER

Marine Toilet
Power Bath Vent
Water Works Panel
6-Gallon Water Heater
Water Heater By-Pass Valve
One-Piece ABS Tub Surround
Demand Water Pump
Decorative Bath Hardware
Medicine Cabinet
Below Floor Low Point Drains

EXTERIOR/CONSTRUCTION

Clear Safety Glass Radius Windows
Rubber Roof
Gutter Rails
Fibron® Fiberglass Sidelwalls
Fiberglass Insulation
Triple Entry Step - Primary Door
Dead Bolt Lock
Hose Storage Compartment
Rack & Pinion Slide Out Room
Flush Floor Main Slide Out Room
Retractable Stabilizer Jacks
30" Wide Radius Entrance Door
Straight Axles
Radial Tires
Rally Wheels
Radius Baggage Doors
Aluminum Framed Walls and Roof
I-Beam Chassis Construction
Fold Away Exterior Grab Handle (Except 318RLTS & 370RLS)
Enclosed Underbelly
Wrap Lower Sidelwalls
Front & Rear Fiberglass Caps
Patio Awning
Dexter EZ Lube Axles
Adjustable Spring Hangers

2002 SOMERSET FIFTH WHEEL SPECIFICATIONS & FEATURES

Specifications

	285RKS ^W	294RKS	318RLTS	325RLS	340IKS	358RLTS	370RLS
Base Weight	8,515	9,459	10,852	9,781	10,400 [†]	11,353	12,293 [†]
GVWR	11,600	12,610	14,080	14,530	13,400 [†]	14,530	14,900 [†]
Carrying Capacity	3,085	3,151	3,228	4,749	3,000 [†]	3,177	2,607 [†]
Hitch Weight	1,800	2,810	2,280	2,730	2,600 [†]	2,730	3,000 [†]
Axle Weight	6,715	6,649	8,572	7,051	7,800 [†]	8,623	9,293 [†]
Interior Height	6' 10"	6' 10"	6' 10"	6' 10"	6' 10"	6' 10"	6' 10"
Exterior Height**	11' 10"	11' 11"	11' 11"	11' 11"	11' 11"	11' 11"	11' 11"
Exterior Length	31' 4"	30' 7"	32' 6"	33' 8"	34' 9"	36' 5"	37' 8"
Exterior Width	8' 5"	8' 5"	8' 5"	8' 5"	8' 5"	8' 5"	8' 5"
Hitch Pin Height	45"	45"	45"	45"	45"	45"	45"
Sleeping Capacity	4/6	4	4/6	4	6	6	6
Fresh Water Capacity (gal.)	47	47	47	47	47	47	47
Waste Water Capacity (gal.)	50	50	50	50	50	50	50
Grey Water Capacity (gal.)	50	50	50	50	50	50	50
Water Heater Capacity (gal.)	6	6	6	6	6	6	6
LP Gas Capacity (lb.)	60	60	60	60	60	60	60
Furnace Rating (x 1,000)	31	31	35	35	40	40	40
Tire Size	X	<input type="checkbox"/>	<input type="checkbox"/>	<input type="checkbox"/>	<input type="checkbox"/>	<input type="checkbox"/>	<input type="checkbox"/>

* Includes Roof Air Conditioner

X = ST225/75R15D

= LT235/65R16E

† Estimated

Base Weight: The weight of the unit with no fluids, cargo, optional equipment or accessories.

GVWR (Gross Vehicle Weight Rating): The maximum permissible weight of the unit, including the Base Weight plus all fluids, cargo, optional equipment and accessories. For safety and product performance, do not exceed the GVWR.

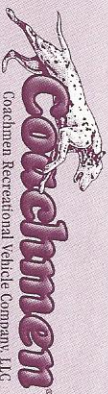
Carrying Capacity: The difference between the Base Weight and the GVWR. This is the amount of weight available for all fluids, cargo, optional equipment and accessories. The actual "loaded" weight will depend on the equipped unit and the owner's individual choice of cargo, etc.

Wider Widths: Numerous Coachmen floorplans feature the "wide body" design concept, which gives you significantly enhanced interior living space and innovative floorplans.

In making your purchase decision, you should be aware that a few states restrict access on some or all roads within the state to vehicles with a maximum 96" width, although special road usage permits may be available.

Vehicles up to 102" in width are permitted in the vast majority of states. You should confirm the road usage laws in the states of interest to you before making your purchase decision. If width is of concern to you, we invite you to consider the broad array of other Coachmen models offered in the standard 96" width.

All information contained in this brochure is believed to be accurate at the time of publication. However, during the model year, it may be necessary to make revisions and Coachmen reserves the right to make all such changes without notice, including changes in prices, colors, materials, equipment and specifications, as well as the addition of new models and the discontinuance of models shown in this brochure. Therefore, please consult with your Coachmen dealer and confirm the existence of any materials, design or specifications that are material to your purchase decision.



Visit our website at: www.coachmenrv.com

COACHMEN RECREATIONAL VEHICLE COMPANY, LLC P.O. Box 30, Middlebury, IN 46540 • P.O. Box 948, Fitzgerald, GA 31750

Quality & Value

Coachmen RV Company has a long and proud history of building quality products with unparalleled value. Coachmen is truly committed to the thousands of RV enthusiasts that have made Coachmen their RV of choice.

A Proud History of Quality & Value

Coachmen RV Company is a proven leader in the RV Industry with over 35 years of experience. Our mission is to make your total RV ownership experience the best possible, by offering you the highest quality and reliability on the market today. Whether you look at our full

In 1964 Coachmen Industries, Inc. was founded by three brothers, Tom, Keith and Claude Corson with a dream and a vision of dedication to the enrichment of your life through enjoyment of the RV lifestyle. They built Coachmen on principles such as:

- Practice the Golden Rule
- Our Word is Our Bond
- Business goes where it is invited and stays where it is well cared for

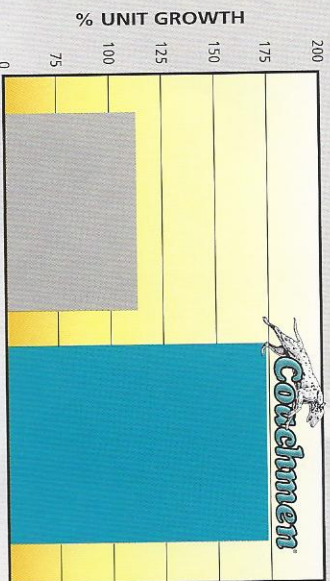
because we care! And because we listen, our products, our services and our programs are the best in the Industry. Coachmen products are designed with your needs in mind!

Come and enjoy the RV lifestyle. Create memories of a lifetime with your family and friends. Take a closer look at the...

*"Leader to the Great Outdoors" –
Coachmen RV Company.*

A Decade of Dominance

Coachmen RV cumulative growth for the past ten years (1991-2000)



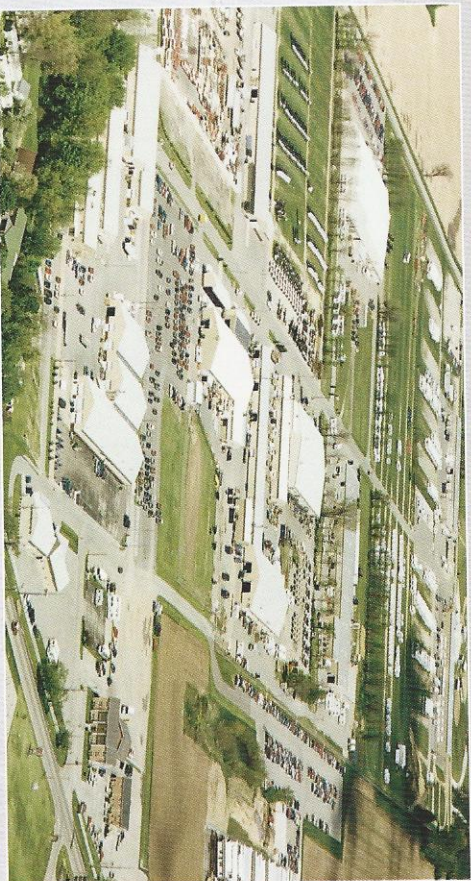
All Others **Coachmen RV**
Source: Statistical Surveys (December 2000 YTD)

breadth of product and model offerings, our Industry first Buckstopper Warranty, our customer driven service assistance, our Coachmen Caravan camping club or our proven track record... Coachmen RV Company is understandably the...

"Leader to the Great Outdoors".

Through these principles, Coachmen has flourished over the years and become the leader throughout the RV Industry. We've learned what makes an RV reliable, practical and enjoyable, as well as, how to enhance the RV lifestyle once you have chosen a Coachmen RV. We have accomplished this by listening to our customers. Our product's design, features and amenities are driven by our customers. We listen

Come visit us at our Complex in Middlebury, Indiana where you can relax at our Visitor's Center and enjoy guided tours of the assembly plants. Also visit us at our facilities in Fitzgerald, Georgia and Goshen, Indiana.



Somerset Fifth Wheels

Take a closer look at Coachmen quality & construction



9 All copper LP lines with double flare fittings help assure no rust will back up into and damage your appliances the way black steel LP lines can.

1 We believe in our products and back them with a two year structural and major components warranty.

2 We deck our entire roof to add strength and to assure a smooth roof, which improves water run off.

3 Aluminum roof trusses offer terrific strength.

4 Wood cabinets, are screwed (not stapled!) to backers in the sidewalls so they stay secure and won't pull free.

5 Our entry door is 30" wide, has an integrated drip rail and is painted to avoid unattractive metal oxidation which occurs on unpainted door frames.

6 Fiberglass front and rear caps allow for better aerodynamics and are extremely durable.

7 Our sidewalls are built with welded 1-1/2" tubular aluminum, and double framing around entrance doors to provide exceptional strength.

8 We insulate around the refrigerator to improve operating efficiency and prolong the trouble free life of the refrigerator.

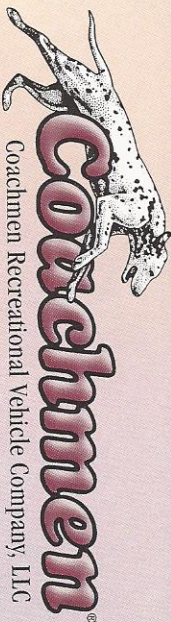
10 Plumbing - All fresh water lines are polyethylene (crack and freeze resistant). Holding tanks are crafted from a durable, rotocast polypropylene.

11 Take a look under the floor at our well organized and secure electrical wiring and LP lines.

12 Residential style aluminum floor ducting distributes heat throughout the unit from a centrally located electronic ignition furnace.

13 Seamless Weyerhaeuser Structurwood Floors eliminate squeaks and create a floor that is stronger than conventional plywood. It is also backed with a 25 year Weyerhaeuser component warranty.





27 Coachmen's "Even Cool" ducted roof air conditioning provides quiet, cool air that easily distributes through the same extruded baffled ducting used in household construction.

26 Our slide room openings are reinforced with triple studding, that provides a 4 1/2" welded tubular aluminum header for long term durability.

25 Seamless rubber roofs are crowned to allow controlled water run-off, which helps prevent leaks.

24 We taper the slideroom roof to assure controlled water run-off.

24 All roof seams are sealed with butyl rubber based sealants that expand and contract with the climate to help prevent leaks.

22 Functional windows in the slideroom sidewall provide light and ventilation.

21 We use only radius clamp ring windows which have no exterior fasteners or screw covers. We seal our windows with butyl encapsulated foam for years of trouble free use.

20 Owens-Corning fiberglass insulation, with an R-7 rating, is carefully hand packed between each stud to maximize the insulation's effectiveness.

19 Safety is utmost. The LP leak alarm, fire extinguisher, smoke detector and heavy link safety chain are all standard.

18 All wheel wells are galvanized steel and are sealed and undercoated with Kendall Automotive Sound & Seal.

16 We wrap the entire underbelly with an extremely tear resistant, fiber laminated, polypropylene material called Darco to help keep water and dirt out. All of the water tanks are heated and enclosed.

17 All outside storage doors have latches to hold the door open which makes access to the storage areas easier. Abundant interior storage includes large residential style closet drawers and innovative under sink utensil drawer. All drawers utilize reliable metal drawer glides.

15 Independent suspension and brakes on all wheels with automotive studded hubs and lug nuts. EZ Lube Axles make it simple to keep your unit running smoothly.

14 12" steel I-beam framing, with full width steel outriggers and cross members provide a reliable foundation to build upon.

Engineering

Founded in 1964, Coachmen is one of the oldest, continuous producing manufacturers of recreational vehicles. A secret of our success is our commitment to the continuous improvement of our products. We have learned that quality must be designed and built into the products, up front. Combining experience and technology, we are able to prevent many problems before they arise, through proper analysis and testing.

Up Front Design for Long Term Comfort

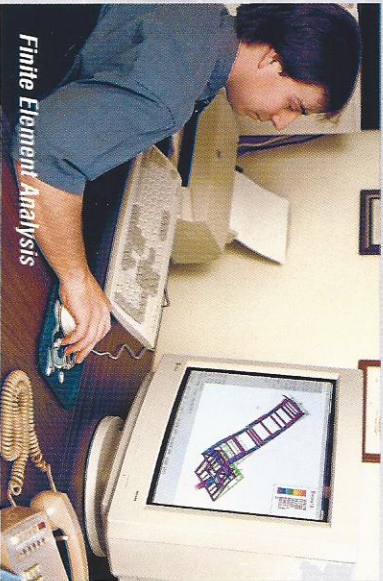
Design & Analysis

Unlike most companies, Coachmen uses computerized technology for much more than simple drafting applications.

At Coachmen RV, we utilize and rely on advanced computer technology to design and engineer a reliable and safe vehicle for you and your family. Finite

Element Analysis helps evaluate structural integrity of components and systems quickly and efficiently. 3-D model simulations and numerous other process and software systems are also used in the design and development of Coachmen recreational vehicles.

Computer weight testing is performed on every new model. Before a floorplan is approved, we know the approximate weights, including dry and loaded, front and rear axle weights and even side-to-side weights which effect towing. After a model is built, the computer analysis is manually verified.



Finite Element Analysis



Performance Testing

Coachmen subjects its new models to a myriad of stringent tests, before introduction to the customer.

Rigorous road tests, sometimes, are performed on actual production units, to verify computer modeling. Studies are made of structural integrity, stress analysis, cabinetry durability, weight loading, vibration analysis and handling. There can be little doubt that Coachmen has superior quality – by design.

Accurate & Specific Weights

Every Coachmen model has a weight label to provide you with the specific and accurate weights and ratings of your unit. These comprehensive weight information labels are posted in your vehicle providing you with critical information such as the unit's Gross Vehicle Weight Rating and Carrying Capacity.

Leak Prevention

Every corner – at the roof, floor and sidewall is wrapped, sealed and secured. All roof and sidewall openings receive framing reinforcement, and are sealed with a non-shrinking, pliable silicone.

To promote water drainage and leak protection, all roofs have tapered rafters.

Finally, every unit we produce is tested for leaks in a high-pressure rain chamber, designed to simulate a driving rain, not just a spring shower.

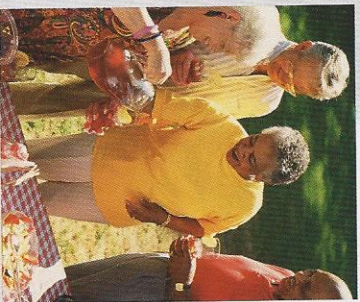
Coachmen goes the extra mile to ensure a quality built and hassle free RV.



International Coachmen Caravan

Enjoy Your Coachmen RV More with International Caravan

International Coachmen Caravan Offers Friends and Fun for Life. With your purchase of a Coachmen RV you are invited to join the nation's largest manufacturer sponsored RV club at a discounted rate...International Coachmen Caravan.



The Coachmen Caravan was established in 1966 to help our owners enjoy RV ownership to its fullest.

With the Coachmen Caravan there are unlimited opportunities for you and your family to form lifelong friendships;

improve and share your unique talents, skills and crafts; be active in running your club; and exchange ideas, information and helpful hints – all these, plus the many benefits outlined below, are uniquely yours through the International Coachmen Caravan.

Incredible Membership Benefits.

Your Caravan membership brings you a multitude of benefits that will help to ensure your safety and enjoyment throughout your RV experiences:

- Free \$5,000 Accidental Death and Dismemberment Insurance policy
- Emergency road service and RV insurance available at special low rates
- Free trip-planning service

- 10% Discounts at over 4,000 campground grounds in the U.S. and Canada
- Free annual Campground Directory
- Hassle-free group travel to popular destinations
- Organized campouts, meetings and parties
- Free subscription to Coachmen Capers, the club's quarterly magazine
- Annual International Rally Week
- A Coachmen Caravan MasterCard
- Free I.D. card, caravan key ring, vehicle decals and I.D. numbers
- Discounts on club clothing, accessories, film developing and selected RV publications

Coachmen RV Invites Public to Tour facilities

The Coachmen Visitor's Center in Middlebury, Indiana is your starting point for weekday tours of our motorhome, travel trailer and fifth wheel manufacturing plants. Also located at the Visitor's Center is the headquarters of the International Coachmen Caravan Owner's Club and the Coachmen RV store "Peter's Market", loaded with a large



selection of Coachmen RV clothes and merchandise. Please call ahead for tour information and times. The Coachmen RV plants in Fitzgerald, Georgia and Goshen, Indiana produce travel trailers and fifth wheels only. Motorhome production tours are available only at the Middlebury location.

A Company You Can Trust Since 1964

Coachmen Recreational Vehicle Company is one of the industry's largest recreational vehicle manufacturers. The

company markets travel trailers, fifth wheel trailers, class C motorhomes and class A motorhomes. A subsidiary of

the Elkhart, Indiana-based

Coachmen Industries,

Coachmen RV Company was

founded in 1964 in Middlebury,

Indiana where its headquarters

and largest manufacturing facil-

ity are located. Manufacturing

sites are also located in

Goshen, Indiana and Fitzgerald, Georgia.

From the beginning it was obvious

that Coachmen is a company that cares

about the products it produces and the

people who enjoy them; always looking

for better ways to bring the pure enjoy-

ment of the RV Lifestyle to more and

more families.

In the nearly four decades since

Coachmen's modest beginnings, count-

less companies have come and gone

while Coachmen has stayed the course.

From product development to service

after the sale, Coachmen has helped set

the standards for others to follow. Many

of today's product designs, manufactur-

ing techniques and product warranties

are a result of Coachmen innovations.

Coachmen RV - Celebrating 37

years as the...

"Leader to the Great Outdoors".



Coachmen RV Forms Alliance with Disney

WALT DISNEY WORLD® Resort has designated Coachmen RV as the official recreational vehicle of Disney's *Fort Wilderness Resort and Campground* and Disney's *Wild World of Sports* complex in Florida. Check out the Coachmen RV on display near Pioneer Hall, home of the popular

"Hoop-Dee-Do!" Musical Revue, the longest running dinner show at

WALT DISNEY WORLD Resort.

Come on and discover the Disney

magic in a Coachmen RV.

JERRY'S TRAILERS & CAMPERS

2601 S. 13th St.
Norfolk, NE 68701
(402) 371-1306



Coachmen Recreational Vehicle Company, LLC

Visit our website at: www.coachmenrv.com

COACHMEN RECREATIONAL VEHICLE COMPANY, LLC
P.O. Box 30, Middlebury, IN 46540 • P.O. Box 948, Fitzgerald, GA 31750

