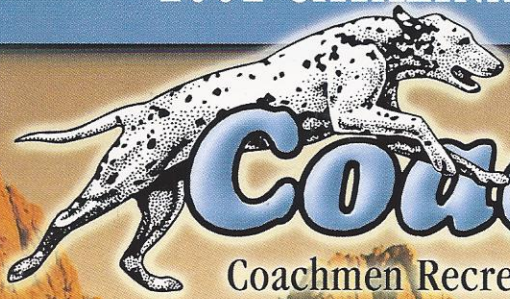
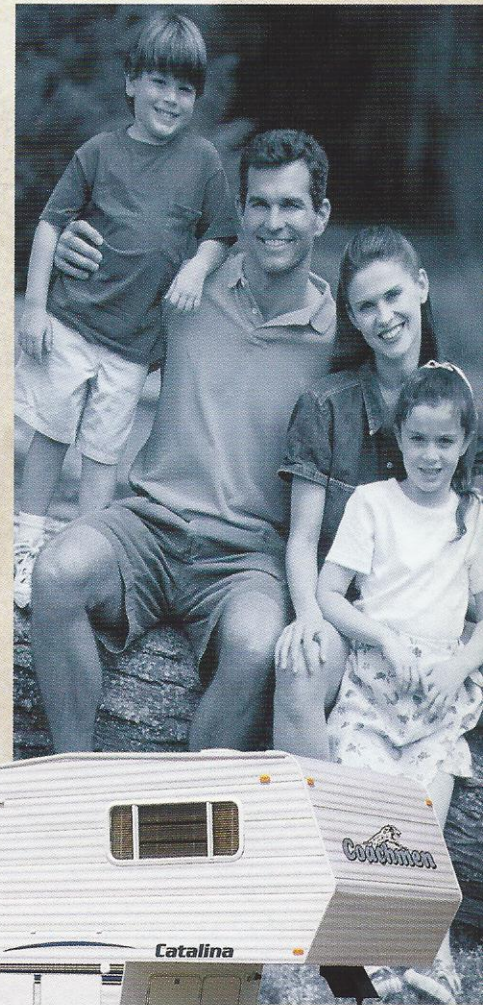
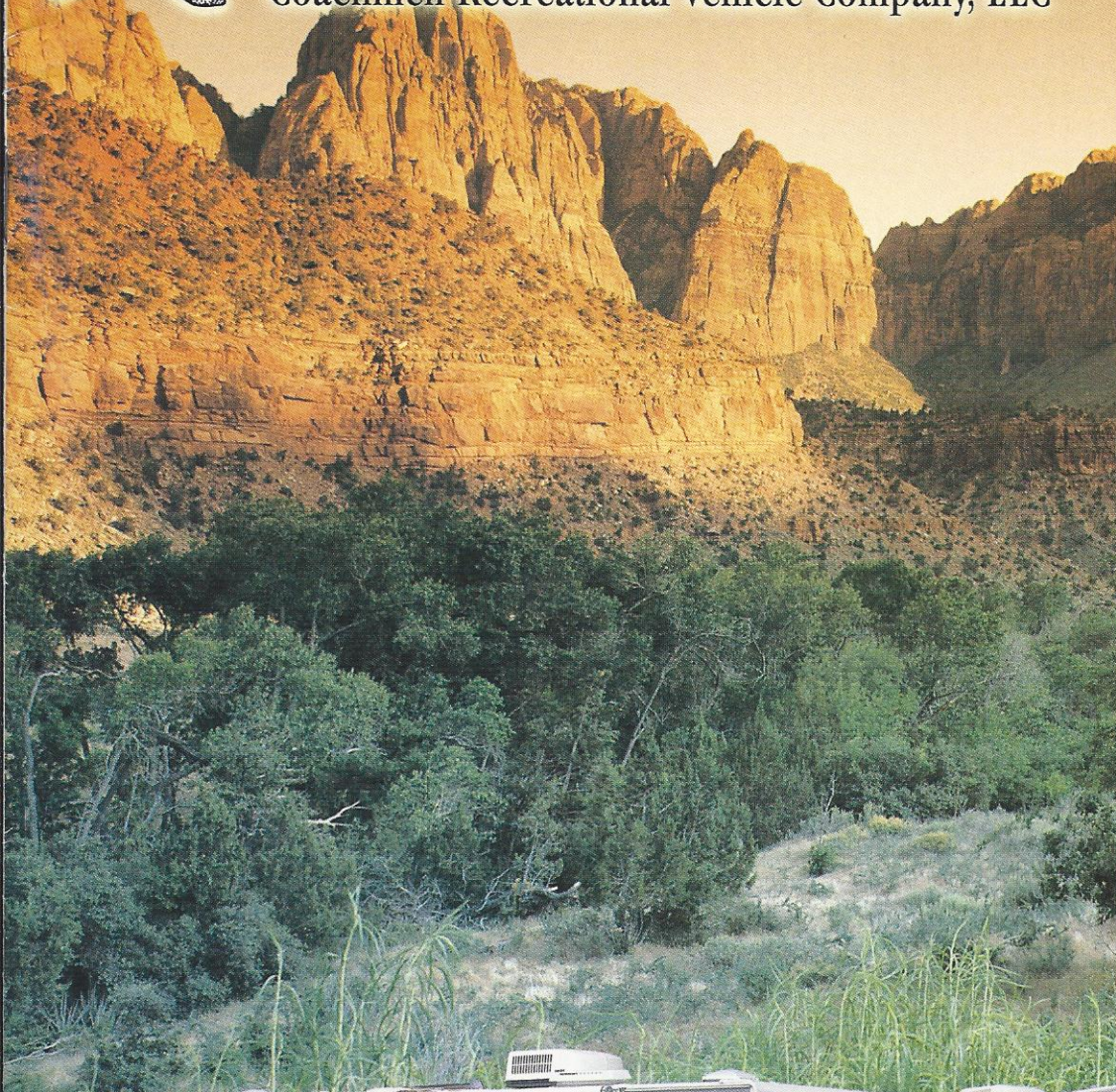


2002 CATALINA TRAVEL TRAILERS & FIFTH WHEELS



# Coachmen®

Coachmen Recreational Vehicle Company, LLC



*Leader to the Great Outdoors*

# Catalina. Exactly What You Want It To Be

2002 CATALINA TRAVEL TRAILERS & FIFTH WHEELS

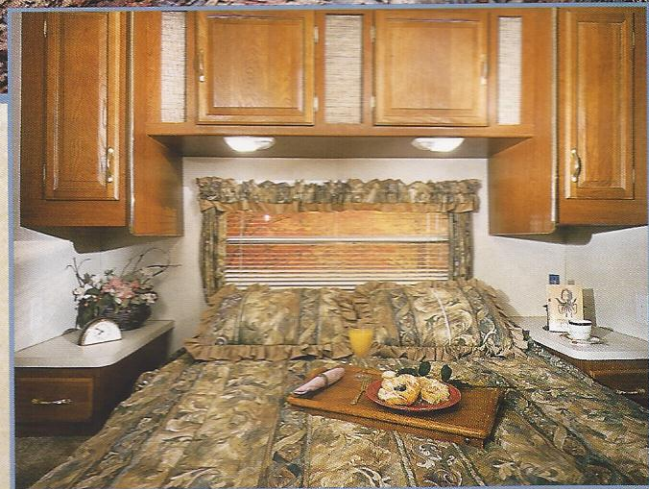
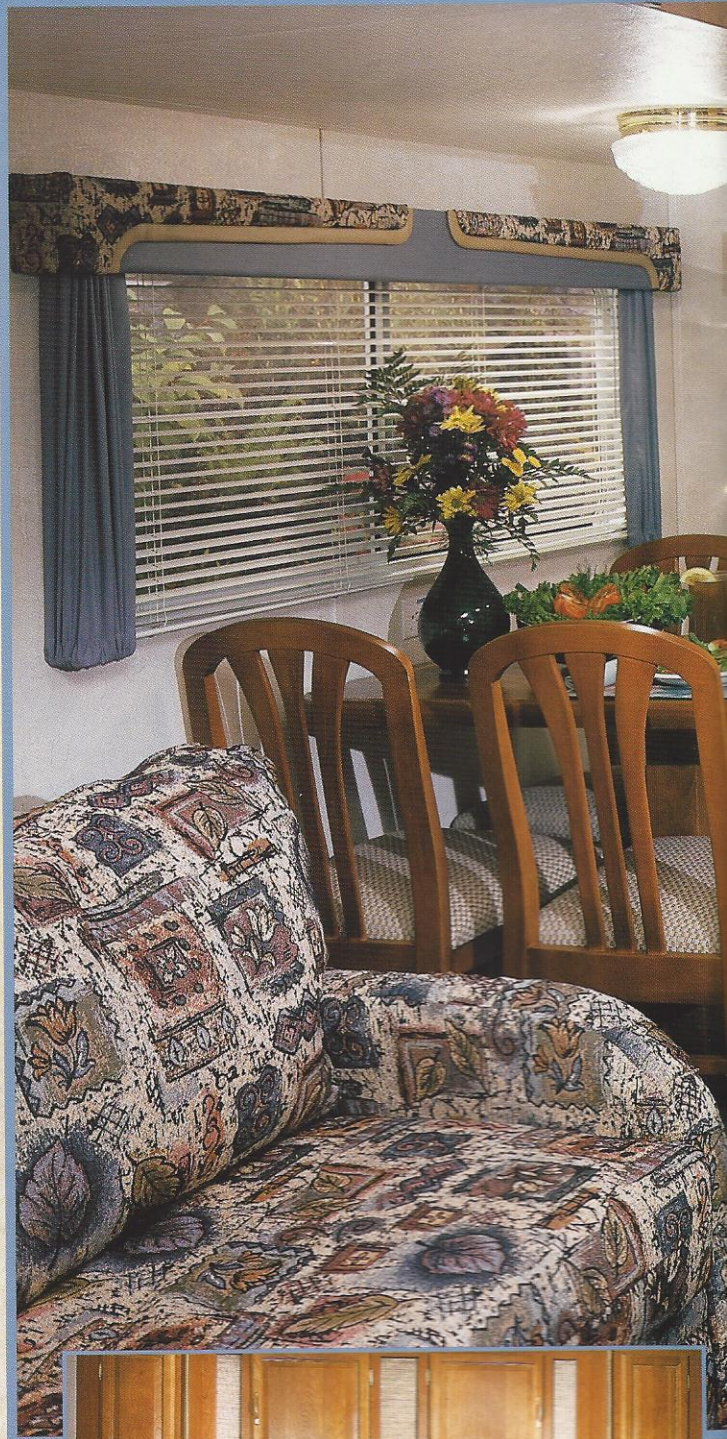
Each individual may have a different idea of what to do with leisure time, but most people agree there simply isn't enough of it. That's why it's important to make every minute count. You can, with the affordable Catalina Travel Trailers and Fifth Wheels. Catalina is exactly what you want it to be... a second home at the lake; a weekend getaway; or a comfortable way to travel across the country.

Many attributes explain Catalina's remarkable popularity.

Maybe it's because Catalina is designed and built to stand up to real life. Or maybe because it comes in so many shapes and sizes – just like families.

There's a Catalina model that matches your needs, lifestyle and budget.

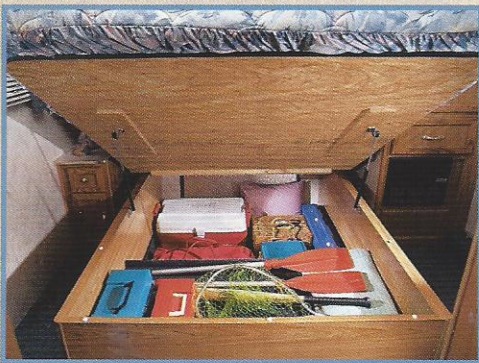
The only thing missing in the Catalina is your family! Whether you explore new territories or return to the solace of familiar ones, Catalina can take you there. Catalina is where your leisure time dreams become reality.



Enjoy a comfortable nights sleep, or a mid-afternoon nap on the deluxe inner spring queen mattress.



The spectacular galley and dinette of the Catalina 296 FKS is both functional and stylish.



Most Catalina beds are equipped with a bed-lift storage system that features pneumatic cylinder lift struts for ease of operation.



With all of the storage the Catalina has to offer, you don't have to leave anything behind.



Another Coachmen innovation is the functional and handy under-sink silverware and utensil drawer.

# Outstanding Service and Warranty

For over 35 years Coachmen RV has been leading the RV Industry in product design, dependability and customer service support. We work very hard to have our products exceed your expectations. Equally important is the service that we provide during your ownership experience. Whether it be information about your unit, reliable warranties, or industry leading service support... Coachmen RV ranks second to no one.



(Optional owner's information packet)

## Buckstopper Warranty

Your Owner's registration card and our famous Buckstopper Limited Warranty is your passport to worry free travel. Our nationwide network of approximately 300 authorized Coachmen Service Centers stand ready to provide you with courteous, dependable and timely service.

## Two Year Structural & Major Components Manufacturers Warranty

In addition to your One Year Buckstopper Limited Warranty, you can travel with confidence knowing that select major structural components such as walls, ceilings, and floors are covered for two years by Coachmen's extended Structural Limited Warranty. Coachmen product also comes with a limited Two Year Major Component Manufacturer's Warranty on select components. Please refer to our Product Warranty Summary Guide for complete details.

## Service Assistance

Coachmen's Service & Parts Department is staffed with trained professionals that are committed to satisfying your needs. Coachmen provides a toll free service number for your assistance and convenience. And for those rare instances that a replacement part is required for your coach, Coachmen RV provides a Priority Customer Parts Order program for overnight part shipments in critical repair situations.



Coachmen RV features a complete parts and service center at the Middlebury, Indiana complex. Relax during your visit in our comfortable parts and service lounge.

## Service Support Center Web Site

Presented as an option under the Coachmen RV Company web site ([coachmenrv.com](http://coachmenrv.com)), this informative site offers:

- A Service Dealer Locator System
- Maintenance Information
- Troubleshooting Information
- Product Warranty Summary Information
- Customer "E-Assistance" Access ...and more

Visit our site and see for yourself that Coachmen RV is committed to taking care of our customers.

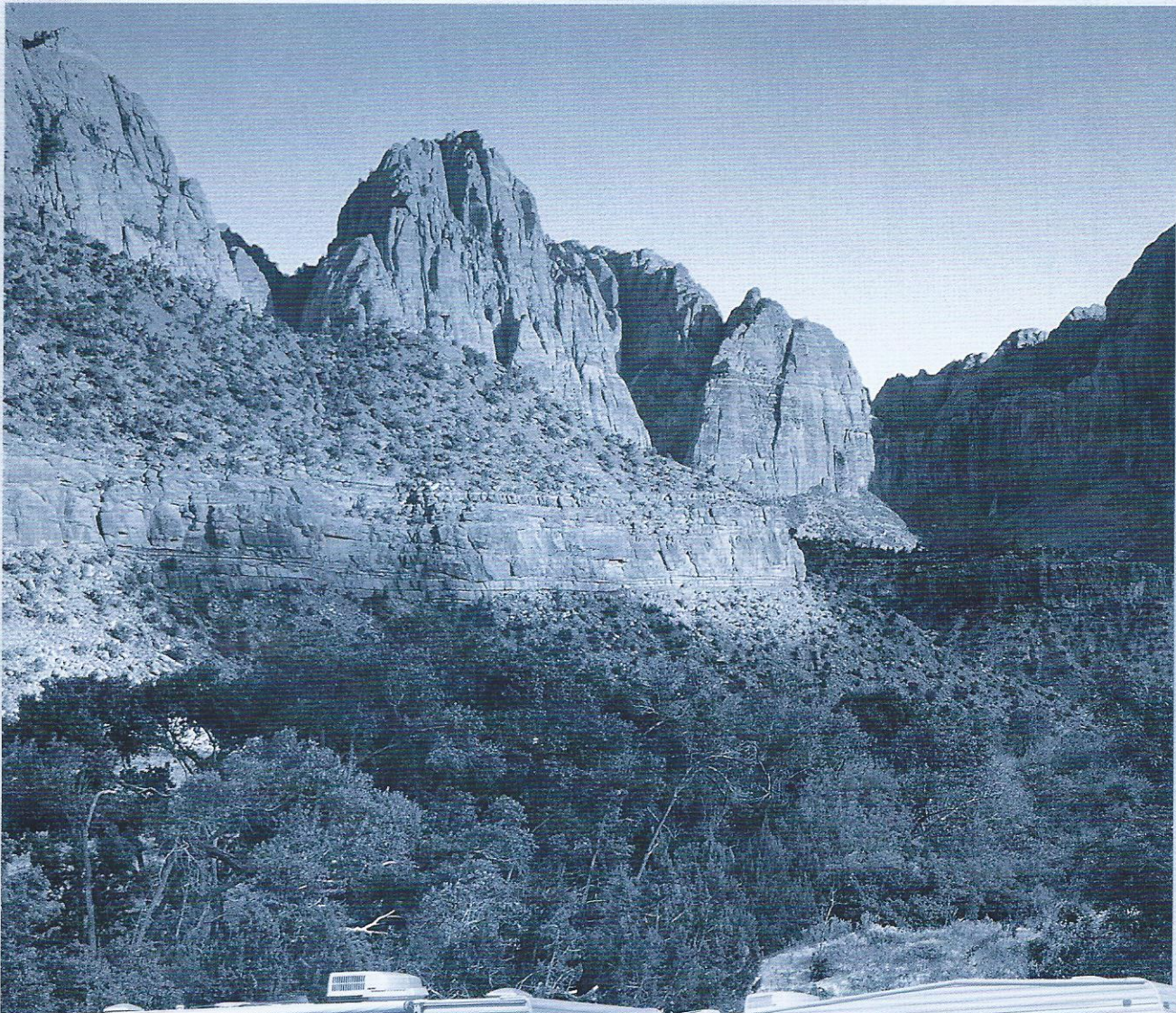
## Ultimate Satisfaction – First®

Coachmen RV owners regularly receive comprehensive surveys through our Ultimate Satisfaction – First (US1 Program). US1 questionnaires provide us with valuable information regarding our customers' products as well as the purchase and ownership experience. Listening to our customers helps us achieve your... "Ultimate Satisfaction – First".





# 2002 CATALINA TRAVEL TRAILERS & FIFTH WHEELS FLOORPLANS AND SPECIFICATIONS



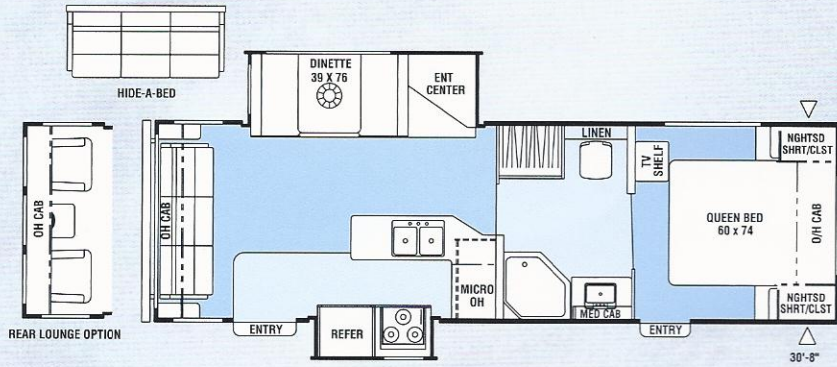
*“Leader to the Great Outdoors”*

2002 CATALINA TRAVEL TRAILERS & FIFTH WHEELS

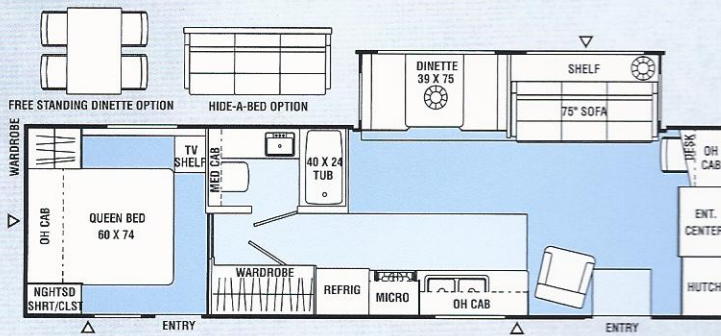
# Travel Trailer Floorplans

## 290rls / Rear Lounge / Slide Out

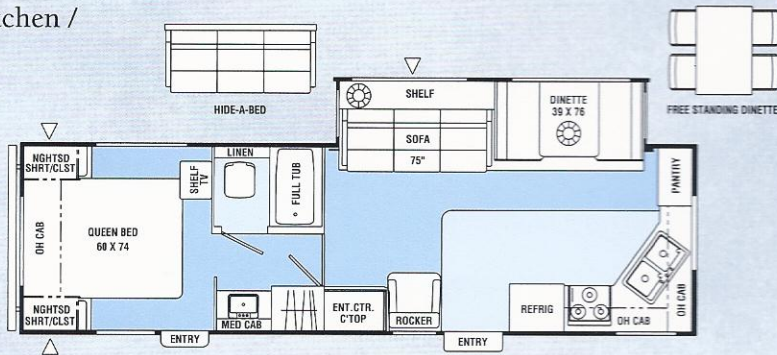
Optional Filon® Fiberglass  
Sidewalls Available



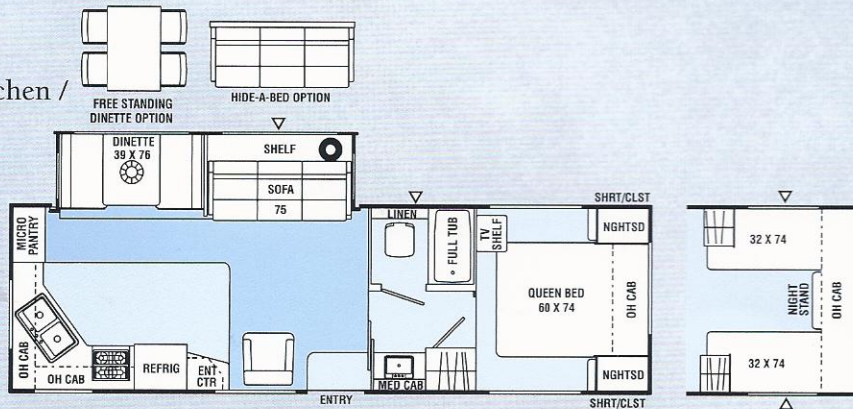
## 291fls / Front Lounge / Slide Out



## 296fks / Front Kitchen / Slide Out



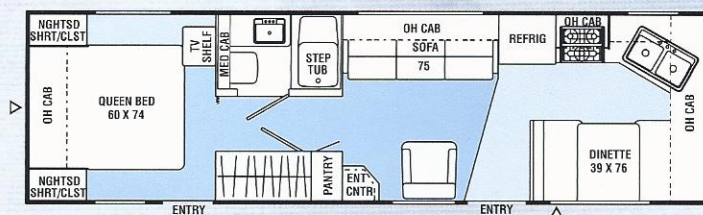
## 297rks / Rear Kitchen / Slide Out



# Travel Trailer Floorplans — Continued

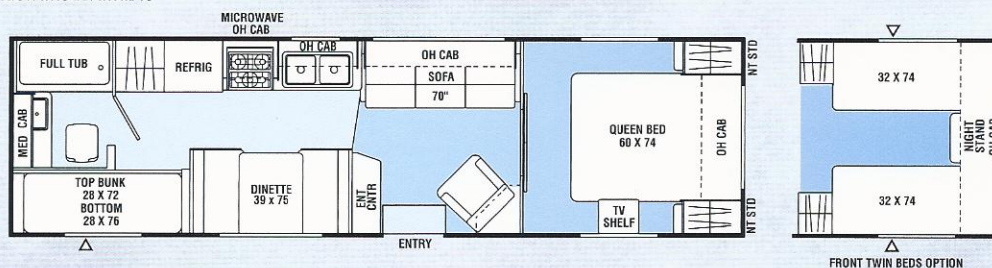
## 298fk / Front Kitchen

Optional Filon® Fiberglass Sidewalls Available



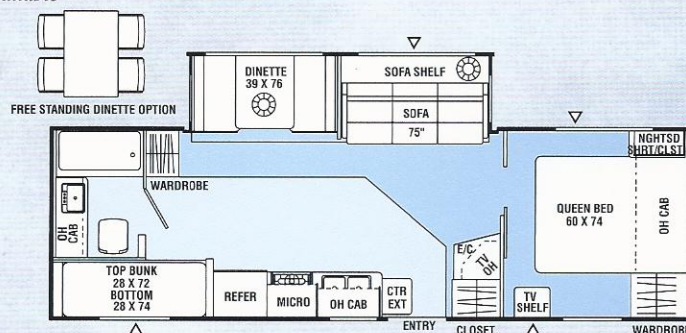
## 299tb / Two Bedroom

Optional Filon® Fiberglass Sidewalls Available



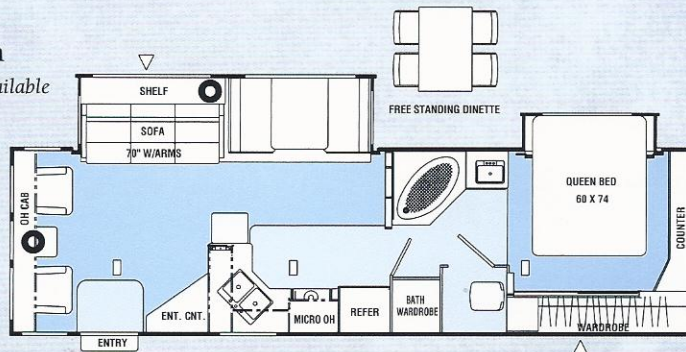
## 300tbs / Two Bedroom / Slide Out

Optional Filon® Fiberglass Sidewalls Available



## 326rls / Walk Thru Bath

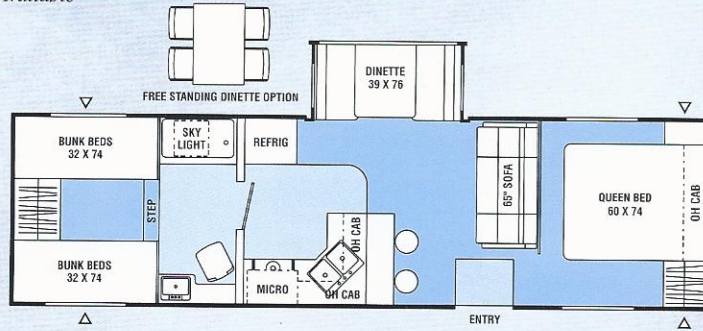
Optional Filon® Fiberglass Sidewalls Available



- Indicates Carpeting
- Indicates Outside Storage Location

# 329tbs / Two Bedroom / Slide Out

Optional Filon® Fiberglass Sidewalls Available



■ Indicates Carpeting  
 ▲ Indicates Outside Storage Location

## Travel Trailer Specifications

	290RLS	291FLS	296FKS	297RKS	298FK	299TB	300TBS	326RLS	329TBS
Base Weight	7,240†	8,160	7,510†	7,492	5,537	5,615	7,577	8,260	7,746
GVWR	10,500†	10,800	10,500†	10,800	7,600	7,600	10,800	10,800	10,800
Carrying Capacity	3,260†	2,640	2,990†	3,308	2,063	1,985	3,223	2,540	3,054
Hitch Weight	730†	1,040	950†	970	860	700	1,000	1,170	1,000
Axle Weight	6,510†	7,120	6,560†	6,522	4,677	4,915	6,577	7,090	6,746
Interior Height	6'9"	6'9"	6'9"	6'10"	6'9"	6'6"	6'10"	6'10"	6'9"
Exterior Height*	10'3"	10'3"	10'3"	10'4"	10'3"	9'3"	10'4"	10'4"	10'3"
Exterior Length	30'2"	32'11"	31'3"	31'	30'8"	31'10"	30'3"	33'3"	33'10"
Exterior Width	8'2"	8'2"	8'2"	8'5"	8'2"	7'10"	8'5"	8'5"	8'2"
Hitch Pin Height	19"	19"	19"	19"	19"	19"	19"	19"	19"
Sleeping Capacity	6/4	6	6/4	6/4	6	8	8/6	6/4	10
Fresh Water Capacity (gal.)	42	36	42	36	30	30	36	36	42
Waste Water Capacity (gal.)	40	40	40	40	42	40	40	42	42
Grey Water Capacity (gal.)	42	42	42	42	34	32	40	42	40
Water Heater Capacity	6	6	6	6	6	6	6	6	6
LP Gas Capacity (lb.)	60	60	60	60	60	60	60	60	60
Furnace Rating (x1,000)	31	35	31	31	31	31	31	35	35
Tire Size	X	X	X	X	•	•	X	X	X

† Estimated at time of printing • = ST225/75R15C X = ST225/75R15D

**Base Weight:** The weight of the unit with no fluids, cargo, optional equipment or accessories.

**GVWR (Gross Vehicle Weight Rating):** The maximum permissible weight of the unit, including the Base Weight plus all fluids, cargo, optional equipment and accessories. For safety and product performance, do not exceed the GVWR.

**Carrying Capacity:** The difference between the Base Weight and the GVWR. This is the amount of weight available for all fluids, cargo, optional equipment and accessories. The actual "loaded" weight will depend on the equipped unit and the owner's individual choice of cargo, etc.

**Wider Widths:** Numerous Coachmen floorplans feature the "wide body" design concept, which gives you significantly enhanced interior living space and innovative floorplans.

In making your purchase decision, you should be aware that a few states restrict access on some or all roads within the state to vehicles with a maximum 96" width, although special road

usage permits may be available. Vehicles up to 102" in width are permitted in the vast majority of states. You should confirm the road usage laws in the states of interest to you before making your purchase decision. If width is of concern to you, we invite you to consider the broad array of other Coachmen models offered in the standard 96" width.

All information contained in this brochure is believed to be accurate at the time of publication. However, during the model year, it may be necessary to make revisions and Coachmen reserves the right to make all such changes without notice, including changes in prices, colors, materials, equipment and specifications, as well as the addition of new models and the discontinuance of models shown in this brochure. Therefore, please consult with your Coachmen dealer and confirm the existence of any materials, design or specifications that are material to your purchase decision.



## Travel Trailer Standard Features

### INTERIOR AND DECOR

Velvet Cherry Cabinets  
 Raised Panel Hardwood Cabinet Doors  
 Residential Metal Drawer Glides  
 Techwood® Drawers  
 Partial Carpet with Pad  
 Linoleum Flooring – Kitchen & Bath  
 Mini Blinds – Coach  
 Mini Blinds – Bedroom (Except w/Bunks)  
 Booth Dinette  
 Jack Knife Sofa  
 Swivel Rocker (Except 290RLS, 300TBS, 329TBS)  
 Residential AM/FM Stereo w/CD  
 Cable TV Jack  
 TV Antenna and Rotor Package  
 TV Shelf – Bedroom  
 Shoe Rack (291FLS, 298FK, 326RLS)  
 LP Leak Alarm  
 Prewired for Satellite Dish  
 Prewired for Phone

### GALLEY

Residential Size Microwave  
 3-Burner Hi Output Range Top w/21" Oven  
 Power/Lighted Range Hood  
 Flush Mount, Double Door Refrigerator  
 Monitor Panel  
 Stainless Steel Sink  
 Silverware Drawer

### SLEEPING

Queen Bed  
 Bunk Beds (299TB, 300TBS, 329TBS)  
 Deluxe Innerspring Mattress – 312 Coil  
 Bedspread and Pillow Shams  
 Bedlift System on Island DB or QB  
 Laundry Chute Access (329TBS)

### BATH AND WATER

Marine Toilet  
 Power Bath Vent  
 One-Piece ABS Tub Surround  
 6-Gallon Water Heater  
 Water Heater By-Pass Valve  
 Demand Water Pump  
 Decorative Bath Hardware  
 Medicine Cabinet  
 Power Roof Vent

### ELECTRICAL/HEATING/ AIR CONDITIONING

30-Amp Service  
 Outside Receptacle GFI  
 Patio Light  
 Off Door Side Utility Light  
 LP Light  
 Double 30 LB LP Bottles w/Auto C/O  
 31,000 BTU E.I. Furnace (Except 291FLS, 326RLS, 329TBS)  
 35,000 BTU E.I. Furnace (291FLS, 326RLS, 329TBS)  
 In-Floor Ducted Heat  
 13.5 BTU Ducted Roof Air Conditioner

### EXTERIOR/CONSTRUCTION

Rubber Roof  
 Fiberglass Insulation  
 Gutter Rail  
 30" Wide Entrance Door  
 Rear Hose Storage Steel Bumper  
 Double Entry Step – Primary Door (Non Slide-Out Models)  
 Triple Entry Steps – Primary Door (All Slide-Out Models)  
 Dead Bolt Lock(s)  
 Secondary Entrance Door (290RLS, 291FLS, 296FKS, 298FK)  
 Electric Rack & Pinion Slide-Out Room (All Slide-Out Models)  
 Flush Floor - Main Slide-Out Room  
 Retractable Stabilizer Jacks (All Slide-Out Models)  
 Straight Axles (All Slide-Out Models)  
 Radial Tires  
 Rally Wheels  
 Clear Safety Glass Radius Windows  
 I-Beam Chassis Construction (Except 299TB)  
 Patio Awning  
 Wrapped Lower Sidewall (Except 297RKS, 299TB, 300TBS, 326RLS)  
 Radius Baggage Doors  
 Metal Siding  
 Pass Through Storage

## Travel Trailer Optional Features

- Twin Beds (297RKS, 299TB)
- Hardwood Refrigerator Door Inserts
- Free-Standing Dinette w/4 Chairs (Except 290RLS, 298FK, 299TB)
- Deluxe Sofa w/Hide-A-Bed (290RLS, 291FLS, 296RLS, 297RKS, 329TBS)
- Satellite TV System (includes certificate for free receiver with the purchase of 4 months programming)
- Front Entertainment Center (291FLS)
- Outside Entertainment Center
- Phone Jack
- Wall Hugger Recliner (Except 290RLS, 300TBS, 326RLS, 329TBS)
- Swivel Rocker (291FLS)
- Two Wall Hugger Recliners (290RLS, 291RLS, 326RLS)
- Rear Lounge (290RLS)
- Large, Flush Mount, Double Door Refer
- 6-Gallon Gas/Electric E.I. Water Heater
- 6-Gallon E.I. Water Heater
- Outside Shower
- Frosted Glass Shower Door (Except 298FK, 299TB, 300TBS)
- 14" Bathroom Skylite (299TB)
- 18" Bathroom Skylite (Except 299TB)
- Foam Core Insulation Package (N/A w/Filon® Option)
- Tinted Safety Glass – Radius Windows
- 15,000 BTU Air Conditioner (Coach Only)
- 2nd 13,500 BTU Roof Air Conditioner (291FLS, 299TB, 326RLS & 329TBS)
- Wire and Frame 2nd Air Conditioner (291FLS, 299TB, 326RLS & 329TBS)
- 50 Amp Service (291FLS, 299TB, 326RLS & 329TBS) (Mandatory with 2nd Roof A/C, Wire and Frame for 2nd A/C Options)
- LP Bottle Cover
- Power Hitch Jack
- Spare Tire Kit
- Retractable Stabilizer Jacks (Non-Slide Models)
- Straight Axle (Non-Slide Models)
- Slide-Out Awning – Bedroom (326RLS)
- Slide-Out Awning – Coach (All Slide Models)
- CSA Upfit (Mandatory For All Canadian Provinces)
- Filon® Fiberglass Sidewalls w/Deluxe Graphic Package
- Roof Ladder
- Sliding Patio Door (326RLS, 329TBS)
- Convenience Package (Rechargeable Flashlight, Rechargeable Wet/Dry Vac, Paper Towel Holder, Water Purifier)
- Owner's Information Package

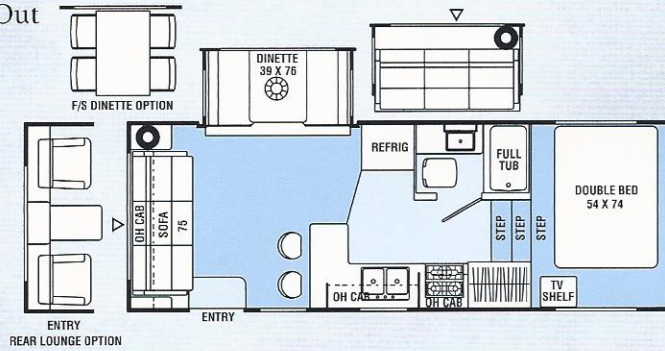




## Fifth Wheel Floorplans

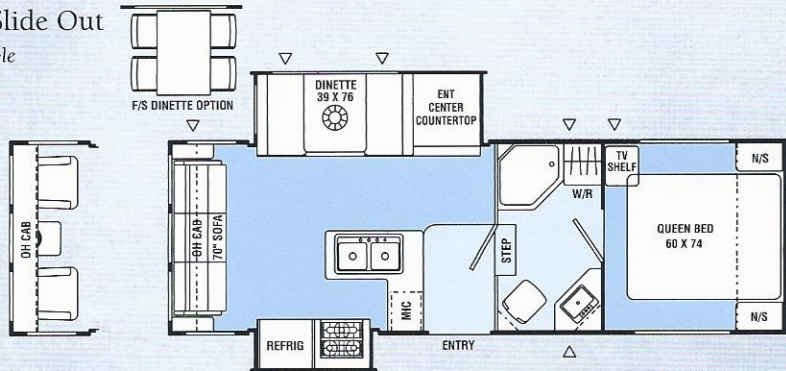
### 237rls / Rear Lounge / Slide Out

Optional Filon® Fiberglass Sidewalls Available



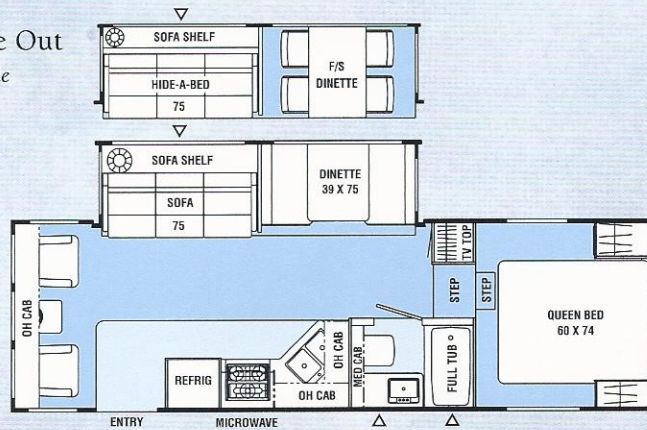
### 242rlds / Rear Lounge / Slide Out

Optional Filon® Fiberglass Sidewalls Available



### 246rls / Rear Lounge / Slide Out

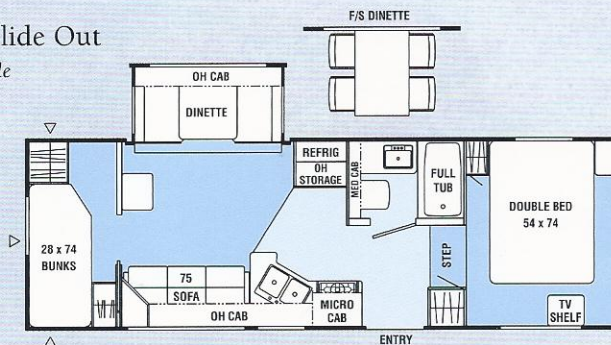
Optional Filon® Fiberglass Sidewalls Available



\* Available  
Dec. 2001

### 256tbs / Two Bedroom / Slide Out

Optional Filon® Fiberglass Sidewalls Available



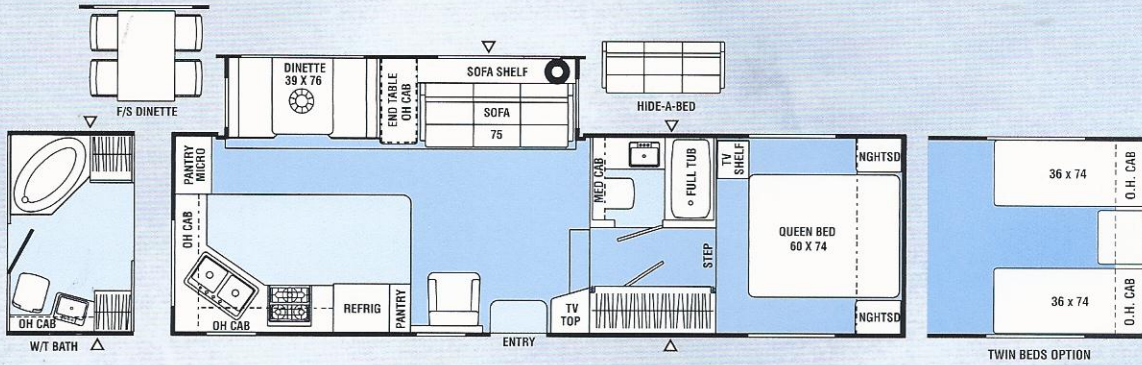
\* Available  
Jan. 2002

■ Indicates Carpeting

△ Indicates Outside Storage Location

# 285rksn / Rear Kitchen / Slide Out / High Profile

Optional Filon® Fiberglass Sidewalls Available



## Fifth Wheel Specifications

	237RLS	242RLDS	246RLS	256TBS	285RKS
Base Weight	6,128	7,034	7,025	7,300†	8,622
GVWR	8,070	9,500	9,740	9,900†	11,790
Carrying Capacity	1,842	2,466	2,715	2,800†	3,168
Hitch Weight	1,070	1,500	1,740	1,800†	1,790
Axle Weight	5,058	5,534	5,285	5,500†	6,832
Interior Height	6'10"	6'10"	6'10"	6'10"	6'10"
Exterior Height*	10'5"	11'2"	11'2"	11'2"	11'10"
Exterior Length	24'10"	25'8"	25'9"	26'7"	30'8"
Exterior Width	8'5"	7'10"	7'10"	8'5"	7'10"
Hitch Pin Height	46"	46"	46"	46"	45"
Sleeping Capacity	6/4	4	6	6	6/4
Fresh Water Capacity (gal.)	36	30	30	30	53
Waste Water Capacity (gal.)	42	50	42	42	40
Grey Water Capacity (gal.)	42	50	42	42	40
Water Heater Capacity	6	6	6	6	6
LP Gas Capacity (lb.)	60	60	60	60	60
Furnace Rating (x1,000) BTU	25	31	31	31	31
Tire Size	ST205/75R15C	ST225/75R15C	ST225/75R15C	ST225/75R15C	ST225/75R15D

\*Add 10" for Roof Air Conditioner † Estimated at time of printing

**Base Weight:** The weight of the unit with no fluids, cargo, optional equipment or accessories.

**GVWR (Gross Vehicle Weight Rating):** The maximum permissible weight of the unit, including the Base Weight plus all fluids, cargo, optional equipment and accessories. For safety and product performance, do not exceed the GVWR.

**Carrying Capacity:** The difference between the Base Weight and the GVWR. This is the amount of weight available for all fluids, cargo, optional equipment and accessories. The actual "loaded" weight will depend on the equipped unit and the owner's individual choice of cargo, etc.

**Wider Widths:** Numerous Coachmen floorplans feature the "wide body" design concept, which gives you significantly enhanced interior living space and innovative floorplans.

In making your purchase decision, you should be aware that a few states restrict access on some or all roads within the state to vehicles with a maximum 96" width, although special road

usage permits may be available. Vehicles up to 102" in width are permitted in the vast majority of states. You should confirm the road usage laws in the states of interest to you before making your purchase decision. If width is of concern to you, we invite you to consider the broad array of other Coachmen models offered in the standard 96" width.

All information contained in this brochure is believed to be accurate at the time of publication. However, during the model year, it may be necessary to make revisions and Coachmen reserves the right to make all such changes without notice, including changes in prices, colors, materials, equipment and specifications, as well as the addition of new models and the discontinuance of models shown in this brochure. Therefore, please consult with your Coachmen dealer and confirm the existence of any materials, design or specifications that are material to your purchase decision.



2002 CATALINA TRAVEL TRAILERS & FIFTH WHEELS

## Fifth Wheel Standard Features

### INTERIOR AND DECOR

Velvet Cherry Cabinets  
 Raised Panel Hardwood Cabinet Doors  
 Residential Metal Drawer Glides  
 Techwood® Doors  
 Carpet with Pad – Living Room & Bedroom  
 Linoleum Flooring – Kitchen & Bath  
 Mini Blinds – Coach  
 Mini Blinds – Bedroom (N/A w/Bunks)  
 Booth Dinette  
 Jack Knife Sofa  
 Swivel Rocker (Except 237RLS, 242RLDS, 243RKS)  
 Residential AM/FM Stereo w/CD  
 Cable TV Jack  
 TV Antenna & Rotor Package  
 TV Shelf – Bedroom  
 LP Leak Alarm  
 Trash Can (285RKSN)  
 Prewired for Satellite Dish  
 Prewired for Phone Jack

### GALLEY

Residential Size Microwave Oven  
 3-Burner Hi Output Range w/21" Oven  
 Power/Lighted Range Hood  
 Flush Mount, Double Door Refrigerator  
 Monitor Panel

Stainless Steel Sink  
 Silverware Drawer

### SLEEPING

Queen Bed (Except 237RLS)  
 Double Bed (237RLS)  
 Deluxe Innerspring Mattress – 312 Coil  
 Bedspread & Pillow Shams  
 Bedlift System on Island DB or QB

### BATH AND WATER

Water Works Panel (285RKSN)  
 Marine Toilet  
 Power Bath Vent  
 One-Piece ABS Tub Surround  
 6-Gallon Water Heater  
 Water Heater By-Pass Valve  
 Demand Water Pump  
 Decorative Bath Hardware  
 Medicine Cabinet  
 Power Roof Vent

### ELECTRICAL/HEATING/ AIR CONDITIONING

Outside Receptacle GFI  
 30 Amp Service  
 GFI Circuit  
 Patio Light  
 Off Door Side Utility Light  
 Hitch Light

Double 30 LB LP Bottles w/Auto C/O  
 25,000 BTU E.I. Furnace (237RLS)  
 31,000 BTU E.I. Furnace (Except 237RLS)  
 In-Floor Ducted Heat  
 13,500 BTU Non-Ducted Roof Air  
 Conditioner (237RLS)  
 13,500 BTU Ducted Roof Air Conditioner  
 (Except 237RLS)

### EXTERIOR/CONSTRUCTION

Rubber Roof  
 Clear Safety Glass Radius Windows  
 Fiberglass Insulation  
 30" Wide Entrance Door  
 Rear Hose Storage Steel Bumper  
 Triple Entry Steps at Primary Door  
 Dead Bolt Lock(s)  
 Flush Floor Electric Slide Room  
 Retractable Stabilizer Jacks (Slide-Out Models)  
 Radial Tires  
 Rally Wheels  
 Patio Awning  
 Gutter Rail  
 Straight Axles  
 Adjustable Spring Hangers  
 I-Beam Chassis Construction  
 Radius Baggage Doors  
 Metal Siding

## Fifth Wheel Optional Features

- Twin Beds (243RKS, 285RKSN)
- Two Bar Stools (237RLS)
- Free Standing Dinette w/4 Chairs (Except 242RLDS)
- Rear Lounge (237RLS & 242RLDS)
- Deluxe Sofa w/Hide-A-Bed (Except 237RLS, 242RLDS, 285RKSN)
- Wall Hugger Recliner (285RKSN)
- Two Wall Hugger Recliners (242RLDS, 246RLDS)
- Outside Entertainment Center
- Satellite TV System (includes certificate for free receiver with the purchase of 4 months programming)
- Phone Jack
- 13" Color TV (285RKSN)
- Jack Knife Sofa in Living Room (237RLS)

- Large, Flush Mount, Double Door Refrigerator (242RLDS & Up)
- Hardwood Refrigerator Door Inserts
- 6-Gallon Gas/Electric E.I. Water Heater
- 6-Gallon E.I. Water Heater
- Bifold Shower Door (285RKSN)
- Walk Thru Bath (285RKSN)
- Outside Shower
- Foam Core Insulation Package
- Tinted Safety Glass – Radius Windows
- 15,000 BTU Air Conditioner (Coach Only)
- Second 13,500 BTU Roof Air Conditioner (285RKNS)
- Wire and Frame for 2nd A/C (285RKNS)
- 50 Amp Service (285RKNS) (Mandatory w/2nd Roof A/C and Wire and Frame for 2nd A/C Options)
- Electric Front Jacks – Single Motor

- Spare Tire Kit
- Shock Absorbers (Except 237RLS)
- Slide-Out Room Awning – Off Doorside (All Slide Out Models)
- Slide-Out Room Awning – Doorside (242RLDS)
- CSA Upfit (Mandatory for all Canadian Provinces)
- Filon® Fiberglass Sidewalls
- 42" Ceiling Fan (279SA, 285RKSN)
- Roof Ladder
- 14" Bathroom Skylight (281TBS)
- 18" Bathroom Skylight (Except 281)
- Convenience Package (Rechargeable Flashlight, Rechargeable Wet/Dry Vac, Paper Towel Holder, Water Purifier)
- Owner's Information Package



Visit our website at: [www.coachmenrv.com](http://www.coachmenrv.com)

COACHMEN RECREATIONAL VEHICLE COMPANY, LLC P.O. Box 30, Middlebury, IN 46540 • P.O. Box 948, Fitzgerald, GA 31750

© Copyright 2001 Coachmen Recreational Vehicle Company Litho in U.S.A. 601

# Take a Closer Look at Coachmen Quality Construction

**1** We believe in our products and back them with a two year structural warranty.

**2** Our truss roof rafters are similar to home construction and offer terrific strength.

**3** We deck our entire roof to add strength and to assure a smooth roof, which improves water run off.

**4** Wood cabinets, with screwed (not stapled) fronts are mounted to backings in the sidewalls so they stay secure and tight.

**5** Our entry door is 30" wide, has an integrated drip rail and is painted to avoid unattractive metal oxidation which occurs on unpainted door frames.

**6** We use top quality, #2 grade spruce lumber on 16" centers for strength and durability.

**7** We insulate around every refrigerator to improve operating efficiency and prolong the trouble free life of the refrigerator.

**8** Plumbing - All fresh water lines are polybutelene (crack and freeze resistant). Holding tanks are crafted from rotocast and durable polypropylene.

**9** Take a look under the floor at our well organized and secure electrical wiring and LP lines.

**10** Weyerhaeuser Structurwood Floors come in 24 foot lengths to reduce seams and create a floor that is stronger than plywood.

**11** Aluminum floor ducting distributes heat throughout the entire unit from a centrally located electronic ignition furnace.



Optional Filon sidewalls on most Floorplans

**12** St width mem found



Even Cool" ducted roof air conditioning provides quiet, cool air that easily flows through the same extruded baffled construction used in household construction.

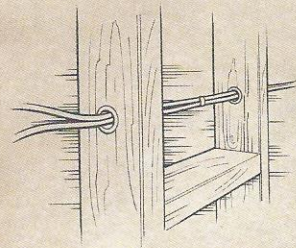
**25** A 2" x 10" header called Timberstrand assures a precisely straight and strong support for the slideroom opening.

**24** The slideroom roof is tapered to assure a controlled water run-off.

**23** Baked enamel aluminum with no vertical seams in the metal, eliminates leak areas. (Fiberglass sidewalls are optional on most floorplans)

**21** Crowned, seamless rubber roofs allow a controlled water run-off, to help prevent leaks.

**22** Metal sleeves in wall studs protect all 110 volt wiring.



**20** Safety is utmost. The LP leak alarm, fire extinguishers, smoke detector and heavy link safety chain are all standard.

**19** We use only radius clamp ring windows which have no exterior fasteners or screw covers. We also seal our windows with butyl encapsulated foam for a water tight fit.

**18** Windows in the slideroom sidewall provide an open feeling with plenty of ventilation.

**17** Owens-Corning fiberglass insulation, with an R-7 rating, is carefully hand packed between each stud to maximize the insulation's effectiveness.

**16** All wheel wells are galvanized steel and are sealed and undercoated with Kendall Automotive Sound & Seal.

**15** Independent suspension and brakes on all wheels with automotive studded hubs and lug nuts.

**13** We wrap the entire underbelly with a tear resistant, fiber laminated, polypropylene material called Darco to keep water and dirt out.

**14** All exterior storage doors have latches to hold the door open which makes for easy access to the storage areas. Abundant interior storage includes large residential style closet drawers and innovative under sink utensil drawer. All drawers utilize residential metal drawer glides.

raming, with full outriggers and cross provide a reliable to build upon.

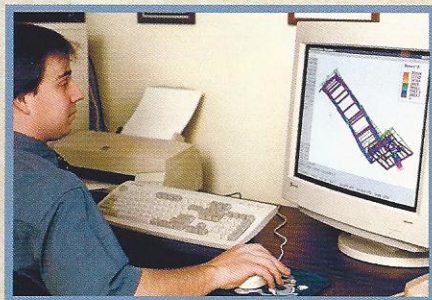
## Advanced Engineering



# Up-Front Design for Long Term Comfort

Founded in 1964, Coachmen is one of the oldest, continuous producing manufacturers of recreational vehicles. A secret of our success is our commitment to the continuous improvement of our products.

We have learned that quality must be designed and built into the products, up front. Combining experience and technology, we are able to prevent many problems before they arise, through proper analysis and testing.



### Design & Analysis

Unlike most companies, Coachmen uses computerized technology for much more than simple drafting applications.

At Coachmen RV, we utilize and rely on advanced computer technology to design and engineer a reliable and safe vehicle for you and your family. Finite Element Analysis helps evaluate structural integrity of components and systems quickly and efficiently. 3D model simulations and numerous other process and software systems are also used in the design and development of Coachmen recreational vehicles.

Computer weight testing is per-

formed on every new model. Before a floorplan is approved, we know the approximate weights, including dry and loaded, front and rear axle weights and even side-to-side weights which affect towing. After a model is built, the computer analysis is manually verified.



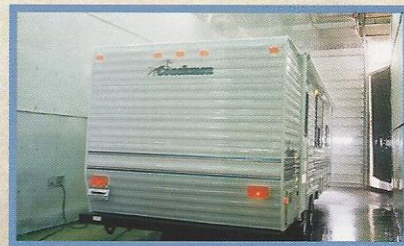
### Performance Testing

Coachmen subjects its new models to a myriad of stringent tests, before introduction to the customer. Rigorous road tests, sometimes are performed on actual production units, to verify computer modeling. Studies are made of structural integrity, stress analysis, cabinetry durability, weight loading, vibration analysis and handling.

There can be little doubt that Coachmen has superior quality – by design.

### Accurate & Specific Weights

Every Coachmen model has a weight label to provide you with specific and accurate weights and ratings of your unit. These comprehensive weight information labels are posted in your vehicle providing you with critical information such as the unit's Gross Vehicle Weight rating and Carrying Capacity.



### Leak Prevention

Every unit we produce is tested for leaks in a high-pressure rain chamber, designed to simulate a driving rain, not just a spring shower.

Every corner – at the roof, floor and sidewall is wrapped, sealed and secured. All roof and sidewall openings receive framing reinforcement, and are sealed with a non-shrinking, pliable silicone.

To promote water drainage and leak protection, all roofs have tapered rafters.

Coachmen goes the extra mile to ensure a quality built and hassle free RV.



Optional Filon® fiberglass sidewalls are available on several Catalina floorplans.

# International Coachmen Caravan Offers Friends and Fun for Life

With your purchase of a Coachmen RV you are invited to join the nation's largest manufacturer sponsored RV club at a discounted rate...International Coachmen Caravan.

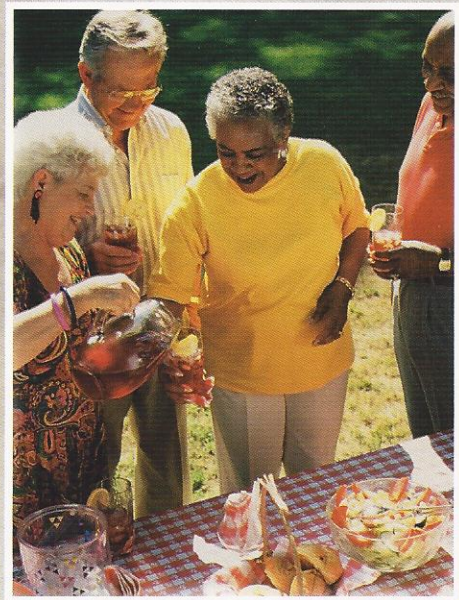
The Coachmen Caravan was established in 1966 to help our owners enjoy RV ownership to its fullest.

With the Coachmen Caravan there are unlimited opportunities for you and your family to form lifelong friendships; improve and share your unique talents, skills and crafts; be active in running your club; and exchange ideas, information and helpful hints – all these, plus the

many benefits outlined below, are uniquely yours through the International Coachmen Caravan.

Incredible Membership Benefits. Your Caravan membership brings you a multitude of benefits that will help to ensure your safety and enjoyment throughout your RV experiences:

- Free \$5,000 Accidental Death and Dismemberment Insurance policy
- Emergency road service and RV insurance available at special low rates
- Free trip-planning service
- 10% Discounts at over 4,000 campgrounds in the U.S. and Canada
- Free annual Campground Directory
- Hassle-free group travel to popular destinations
- Organized campouts, meeting and parties
- Free subscription to Coachmen Capers, the club's quarterly magazine
- Annual International Rally Week
- A Coachmen Caravan MasterCard
- Free I.D. card, Caravan key ring, vehicle decals and I.D. numbers
- Discounts on club clothing, accessories, film developing and selected RV publications



## Coachmen RV Invites Public to Tour Facilities

The Coachmen Visitor's Center in Middlebury, Indiana is your starting point for weekday tours of our motorhome, travel trailer and fifth wheel manufacturing plants. Also located at the Visitor's Center is the headquarters of the International Coachmen Caravan Owners Club and the Coachmen RV store, "Pete's Market", loaded with a large selection of Coachmen RV clothes and merchandise. Please call ahead for tour information and times. The Coachmen RV plants in Fitzgerald, Georgia, and Goshen, Indiana produce travel trailers and fifth wheels only. Motorhome production tours are available only at the Middlebury location.



## Decor Selections

Madison Blue



Opulence Sand



Sandalwood Plum



Dazzling interiors feature skillfully coordinated upholstery and window treatments. Coachmen RV chooses only top-grade fabrics wear-dated as heavy-duty. These fabrics have been tested for durability beyond 15,000 double rubs (in and out action) to simulate heavy usage. An average chair in an American home is subjected to only 3,000 double rubs per year.

# A Company You Can Trust Since 1964

Coachmen Recreational Vehicle Company is one of the industry's largest recreational vehicle manufacturers. The company markets travel trailers, fifth wheel trailers, class C motorhomes and class A motorhomes.

A subsidiary of the Elkhart, Indiana-based Coachmen Industries, Coachmen RV Company was founded in 1964 in Middlebury, Indiana where its headquarters and largest manufacturing facility are located. Manufacturing sites are also located in Goshen, Indiana and Fitzgerald, Georgia.

From the beginning it was obvious that Coachmen is a company that cares about the products it produces

and the people who enjoy them; always looking for better ways to bring the pure enjoyment of the RV Lifestyle to more and more families.

In the nearly four decades since Coachmen's modest beginnings, countless companies have come and gone while Coachmen has stayed the course. From product development to service after the sale, Coachmen has helped set

the standards for others to follow. Many of today's product designs, manufacturing techniques and product warranties are a result of Coachmen innovations. Coachmen RV – Celebrating 37 years as "Leader to the Great Outdoors."



## Coachmen RV Forms Alliance With Disney

WALT DISNEY WORLD® Resort has designated Coachmen RV as the official recreational vehicle of Disney's Fort Wilderness Resort and Campground and Disney's Wide World of Sports™ complex in Florida. Check out the Coachmen RV on display near Pioneer Hall, home of the popular "Hoop-Dee-Do" Musical Revue, the longest running dinner show at Walt Disney World Resort. Come on and discover the Disney magic in a Coachmen RV.

JERRY'S TRAILERS & CAMPERS  
2601 S. 13th St.  
Norfolk, NE 68701  
(402) 371-1306



Visit our website at: [www.coachmenrv.com](http://www.coachmenrv.com)

COACHMEN RECREATIONAL VEHICLE COMPANY  
P.O. Box 30, Middlebury, IN 46540 • P.O. Box 948, Fitzgerald, GA 31750

