

CROSSROADS[®]

Pursuing Unexplored Territories



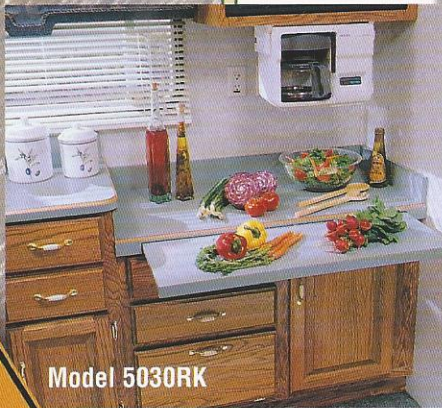
Travel Trailers & Fifth Wheels

The Journey Never Ends...

It's hard to pin it down, but customers who have been inside one of our beautiful new Crossroads RV models say they have an unmistakable sense of quality and comfort from the moment they enter. Here at Crossroads RV, we're delighted with these reports. It's no accident! We've designed and created every inch of our new Crossroads RV's with value in mind. We've chosen each component, from storage tanks to draperies, with the idea that we want to offer a product we'd be proud to own ourselves, one that will look as beautiful in five years as it did the day you purchased it. Using all first-quality materials, we've still managed to keep our prices moderate. Step into a Crossroads model today, and find out for yourself--that unmistakable atmosphere of quality--you'll sense it.

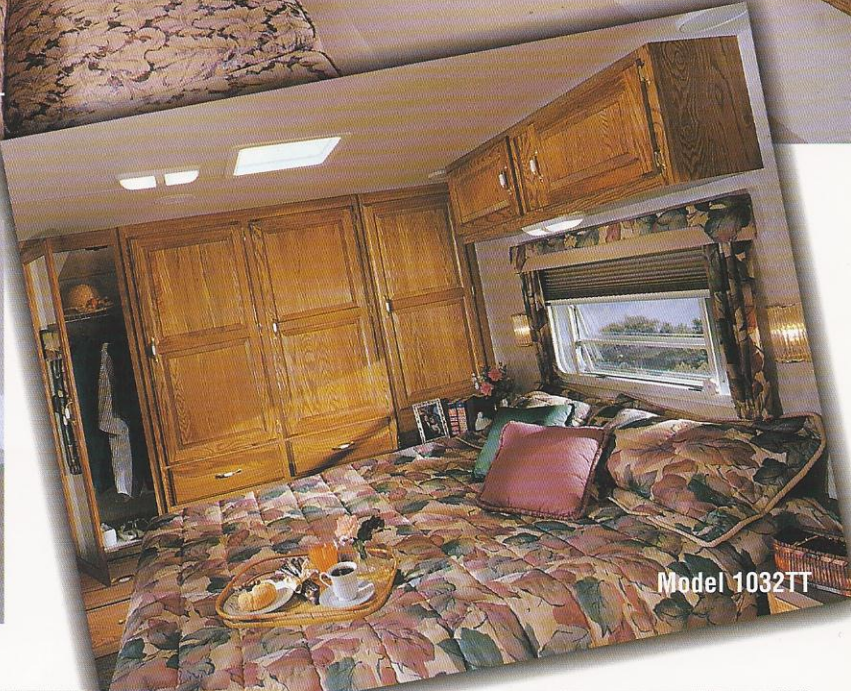


Model 1032TT

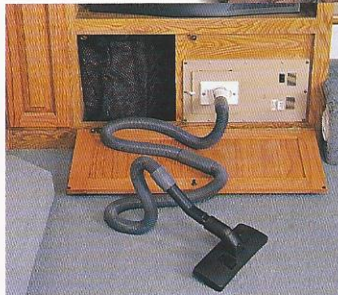
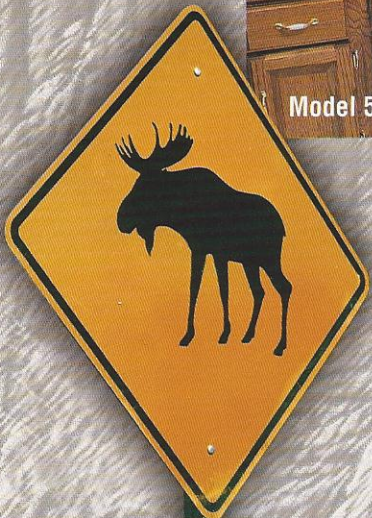


Exclusive slide-out counter top/work station.

Model 5030RK



Model 1032TT



Central vac added for your convenience



Amish crafted hand finished oak extension dinette table & chairs

Optional on fifth wheel only

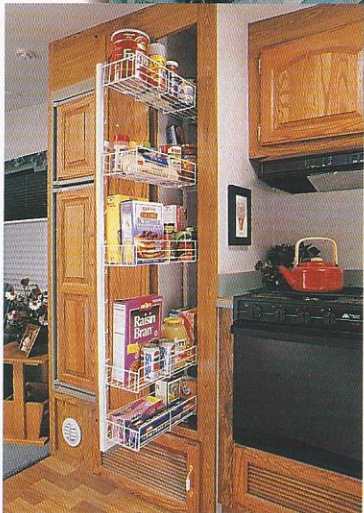
Model 5030RK



Model 5032



Model 5032

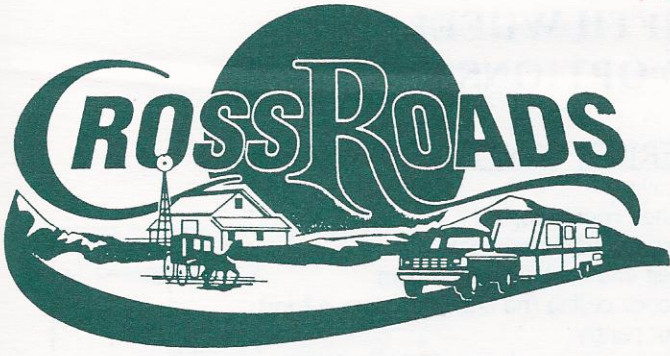


Luxury, practicality and durability are all trade marks that you will enjoy in your Crossroads RV. Extraordinary features are found in every model and our customers will enjoy the most popular up to date options available.

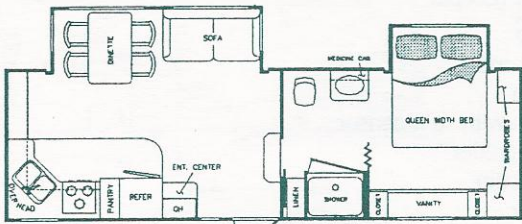


JERRY'S TRAILERS & CAMPERS
 2601 S. 13th St.
 Norfolk, NE 68701
 (402) 371-1306

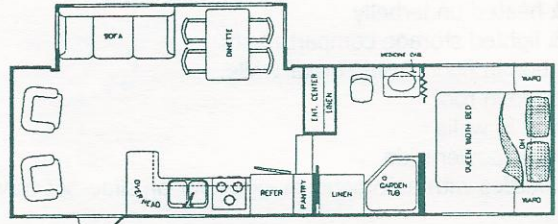
1115 West Lake St.
 P.O. Box 40
 Topeka, IN 46571
 Phone (219) 593-3850
 Toll Free 888-226-7496
 Fax (219) 593-2088



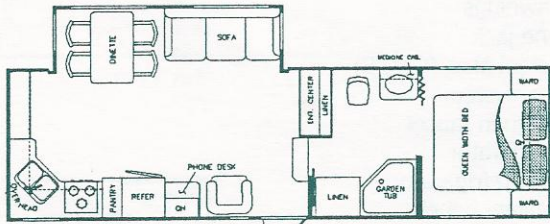
CROSSROADS "ALL AMERICAN" 5TH WHEEL



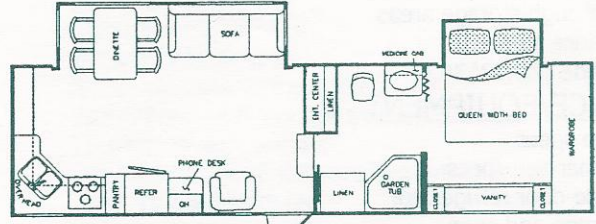
5028-RK



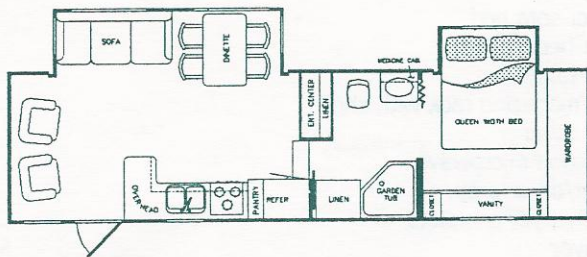
5030-RLS



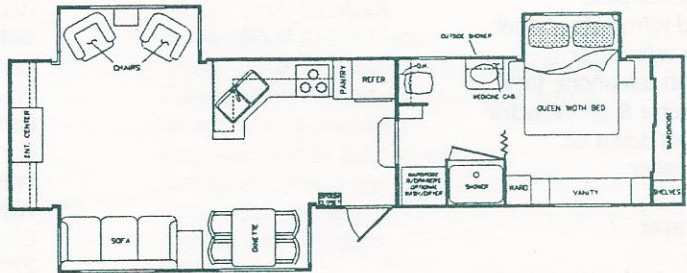
5030-RKS



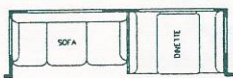
5032-RKS



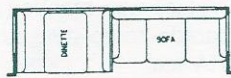
5032-RL



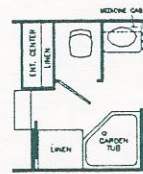
5036-RLT



OPTION
 "A"
 AVAILABLE
 ON RL'S



OPTION
 "A"
 AVAILABLE
 ON RK'S



OPTION
 "B"
 AVAILABLE
 ON RL'S & RK'S



OPTION
 "B"
 AVAILABLE
 ON RL'S & RK'S

CROSSROADS RV FIFTH WHEEL STANDARDS AND OPTIONS

CONSTRUCTION

Steel tube frame
Heavy gauge crossmembers and outriggers
Screwed aluminum construction
(rafters, floor joists, sidewalls, fronts & rears)
Shock absorbers
Stabilizer jacks
5/8" tongue & groove floor bonded to alum. frame
Tapered aluminum truss rafters
Tube bumpers with sewer hose storage
6000# axles
16" radial tires
Breakaway switch
Electric front jack
Rubber roof
1/2" decking on roof
Moulded front and rear caps
Fiberglass exterior skin
Enclosed & heated underbelly
Carpeted & lighted storage compartments
R-21 insulation in floor, front & rear walls
R-14 insulation in roof
R-7 insulation in walls
V-Tech electric power slide
2-30# gas bottles with automatic change over on slide-out tray
Battery
Safety glass jalousie windows
Dead bolt lock on entrance door
Ducted A/C
Full pass through storage areas
Triple entrance step
Bedroom slide (28',32',36')

APPLIANCE/EQUIPMENT

Furnace-see specs.
Air conditioner-see specs.
Large double-door refrigerator
3-burner range and oven
10-gallon gas/elect. D.S.I. water heater
Demand water system
AM/FM stereo cassette w/4 speakers
Water heater bi-pass
Range hood w/monitor panel
TV antenna w/booster
Cable TV and telephone jack
Smoke detector & LP detector
Exterior wash down kit
Fire extinguisher
Microwave
Stool w/sprayer
Power cord
No fuss flush system

INTERIOR

32 oz. carpet
#6 Rebond carpet pad
Congoleum flooring in bath
Mastercraft furniture
Double bowl sink & faucet w/sprayer
Raised panel oak doors and drawer fronts
Raised panel refrigerator door panels
Built-in entertainment center
Lighted wardrobes and closets
Fluorescent lighting
Day/night shades

INTERIOR, CONTINUED

Sink covers
Oak edge countertops
Innerspring pillow-top mattress
TV shelf and hook up in bedroom
Soft-touch ceiling (no unsightly gimp & trim)
Pull-out pantry
Pull-out counter work area (RK 5th wheel)
Bedsread & pillow shams
Power vent in bedroom
Swivel rocker

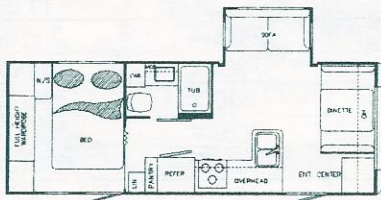
PLUMBING/SYSTEMS

Fresh water tank-see specs.
Waste water tank-see specs.
Gray water tank-see specs.
Extra 35 gallon gray water tank (various models)
55 AMP converter
Ground fault receipts.

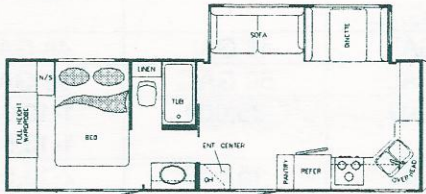
OPTIONS

Spare tire/carrier
Fantastic fan
Fantastic fan with rain sensor
Roof rack & ladder
Landing jack pin
Extra battery
Battery slide tray
Aluminum wheels
Window awnings
Slide out awnings
Extra phone jack
Enclosed stool area (Opt. B)
Central vac. system
Upgrade kitchen faucet
10 C.F. refrigerator
Ice maker in refrigerator
Bedroom vanity bench
Delete computer station
Scare light (exterior)
Coffee maker
Ceiling fan
Recliner sofa bed
Hide-a-bed (28 RK)
Coffee table
Towel/magazine rack with shelf
Range cover
Convection microwave
Washer/dryer prep.
Washer/dryer complete
CD player
27" TV
VCR
Hard-surface countertop (36' only)
Wall-hugger recliner
Satellite dish
Fireplace with mantle (36' only)
Upgrade home-style stereo (36' only)
RVIA seal

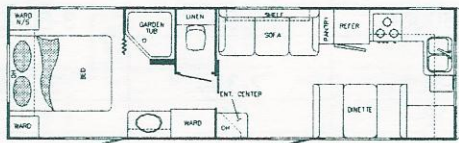
CROSSROADS RV TRAVEL TRAILER STANDARDS AND OPTIONS



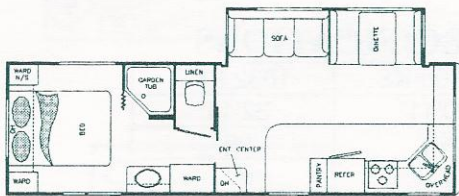
26 FT, LSS



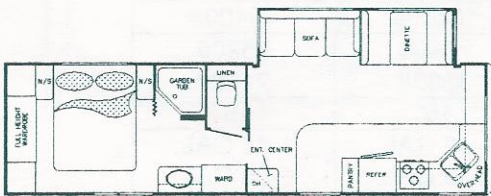
28 FT FKS



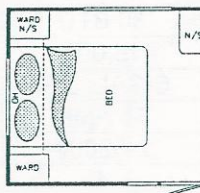
30 FT FK



30 FT FKS



32 FT FKS



Available on
26', 28' and 32'

OPTIONS

- | | |
|------------------------------|------------------------------|
| Spare Tire/Carrier | Range cover |
| Fantastic Fan | Sink covers |
| Fantastic Fan w/ rain censor | Hide-a-bed sofa |
| Gel-coat glass exterior | Free standing chair |
| Roof rack/ladder | Free standing table & chairs |
| 15,000 ducted A/C | 3-burner range/oven |
| Awning | CD player |
| Slide out awning | Vinyl plank floor in kitchen |
| Battery kill switch | Tub door |
| Power front jack | Shower |
| Extra battery | Day/night shades |
| Microwave | Island bed (26', 28', & 32") |
| Convection microwave | RVIA seal |

CONSTRUCTION

- All aluminum construction
- 8" I-beam frame rails
- 5/8" tongue & groove floor bonded to aluminum floor joist
- Tapered aluminum truss roof rafters
- Tube rear bumper with sewer hose storage
- 2-5200# axles with shocks
- 15" radial tires
- Smooth filon exterior skin
- Front and rear caps
- Rubber roof with 1/2" decking
- Enclosed heated holding tanks
- Enclosed underbelly
- Carpeted and lighted storage compartments
- R-14 insulation - roof, floor, front wall, rear wall
- R-7 insulation - sidewalls
- V-tech power slide
- Safety glass jalousie windows
- Stabilizer jacks (4)
- Moulded gas bottle cover
- 2-30# gas bottles with automatic change over
- Break away switch
- Safety chains
- Battery

APPLIANCE/EQUIPMENT

- Double door refrigerator
- 3-burner range top
- 6 gallon gas/electric D.S.I. water heater
- 30,000 BTU furnace
- Demand water system
- Water heater by-pass
- Stereo cassette w/4 speakers
- Range hood with monitor panel
- TV antenna with booster
- Smoke detector/LP detector/fire extinguisher
- Cable TV/telephone jack

INTERIOR

- 32 oz. carpet
- #6 rebond carpet pad
- Congoleum flooring in bath and kitchen
- Master Craft furniture
- Double bowl kitchen sink
- Raised panel oak doors and drawer fronts
- Raised panel oak refrigerator door inserts
- Power vent in bedroom
- Upgrade interior lighting package
- Soft touch ceiling (no gimp or trim)
- Fixed booth dinette
- Shades and valances
- Bedsread
- Full rear wardrobe (where available)
- Slide out pantry
- Medicine cabinet with mirror in bath
- 46" bath tub

PLUMBING/SYSTEMS

- 30 amp service
- 58 gallon fresh water system
- 48 gallon waste water tank
- 1 - 48 gallon & 1 - 32 gallon gray water tank
- 55 amp converter
- Ground fault interrupter
- Ceiling prepped for ducted A/C

CROSSROADS "ALL AMERICAN" 5TH WHEEL SPECIFICATIONS

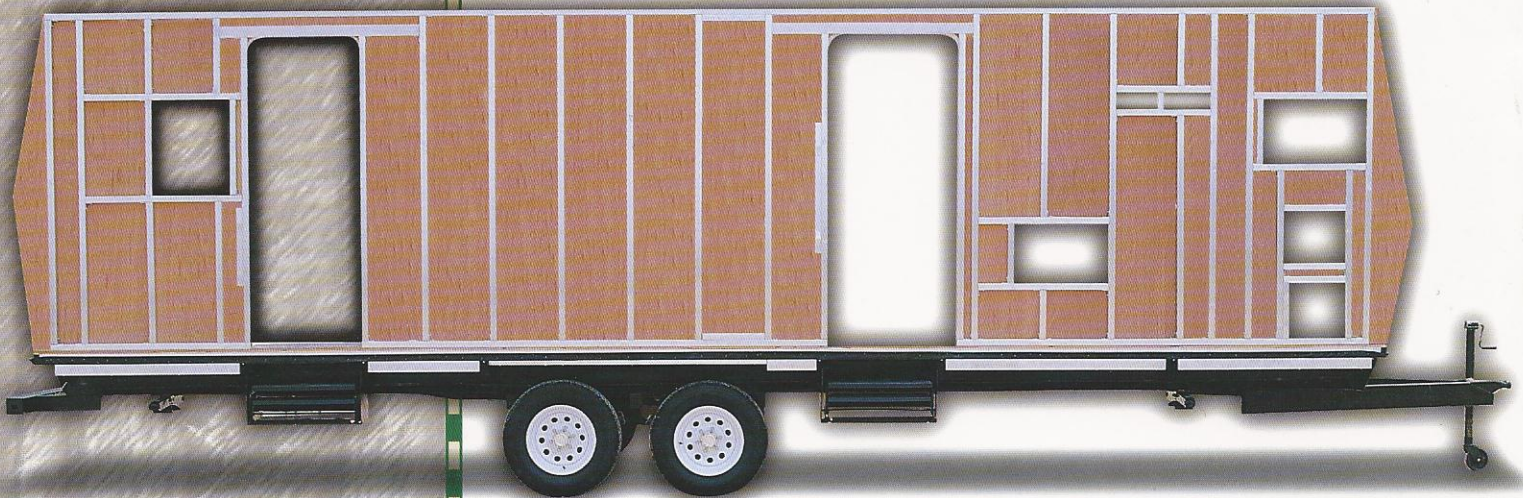
| MODEL | 5028 RK | 5030 RK | 5030 RL | 5032 RK | 5032 RL | 5036 RL |
|------------------|------------------------|------------------------|-------------|------------------------|-------------|----------------------|
| LENGTH | 28'11" | 30'4" | 30'4" | 32'4" | 32'4" | 36'11" |
| WIDTH | 96" | 96" | 96" | 96" | 96" | 96" |
| HEIGHT | 11'6" | 11'6" | 11'6" | 11'6" | 11'6" | 11'6" |
| HITCH DRY WEIGHT | 1980# | 1700# | N/A | 2000# | 2100# | 2360# |
| AXLE DRY WEIGHT | 7020# | 7400# | N/A | 7620# | 7560# | 10440# |
| GVWR | 12000# | 12000# | 12000# | 12000# | 12000# | 18000# |
| DRY WEIGHT | 9020# | 9100# | N/A | 9620# | 9660# | 12560# |
| NET LOADING CAP. | 4980# | 4600# | N/A | 4380# | 4440# | 5440# |
| TIRE SIZE | 16" | 16" | 16" | 16" | 16" | 16" |
| GREY WATER CAP. | 1-48 GAL. 1-35 GAL. | 1-48 GAL. 1-35 GAL. | 48 GAL. | 1-48 GAL. 1-35 GAL. | 48 GAL. | 2-36 GAL. |
| BLACK WATER CAP. | 48 GAL. | 48 GAL. | 48 GAL. | 48 GAL. | 48 GAL. | 48 GAL. |
| FRESH WATER | 60 GAL. | 60 GAL. | 60 GAL. | 60 GAL. | 60 GAL. | 96 GAL. |
| FURNACE BTU | 35,000 | 35,000 | 35,000 | 35,000 | 35,000 | 1-19,000 1-13,500 |
| A/C BTU | 15,000 | 15,000 | 15,000 | 15,000 | 15,000 | 2-13,500 |
| WATER HEATER | 10 GAL. DSI | 10 GAL. DSI | 10 GAL. DSI | 10 GAL. DSI | 10 GAL. DSI | 10 GAL. DSI |
| CONVERTER | 55 AMP | 55 AMP | 55 AMP | 55 AMP | 55 AMP | 55 AMP |
| AXLE | 2-6000# | 2-6000# | 2-6000# | 2-6000# | 2-6000# | 3-6000# |
| SLEEPING | 4 | 4 | 4 | 4 | 4 | 4 |
| L.P. GAS BOTTLES | 2-30# | 2-30# | 2-30# | 2-30# | 2-30# | 2-30# |
| AWNING SIZE | 18' | 18' | 21' | 18' | 21' | 12' |

CROSSROADS "PREP SERIES" TRAVEL TRAILER SPECIFICATIONS

| MODEL | 1026 LS | 1028 FKS | 1030 FK | 1030 FKS | 1032 FKS |
|------------------|------------|------------------------|------------------------|------------------------|------------------------|
| LENGTH | 26'11" | 28'11" | 30'11" | 30'11" | 32'11" |
| WIDTH | 96" | 96" | 96" | 96" | 96" |
| HEIGHT | 9'7" | 9'7" | 9'7" | 9'7" | 9'7" |
| HITCH DRY WEIGHT | 700# | 830# | 750# | 980# | 1140# |
| AXLE DRY WEIGHT | 5800# | 5980# | 5680# | 6060# | 6380# |
| GVWR | 10400# | 10400# | 10400# | 10400# | 10400# |
| DRY WEIGHT | 6500# | 6810# | 6430# | 7040# | 7520# |
| NET LOADING CAP. | 3900# | 3590# | 3970# | 3360# | 2480# |
| TIRE SIZE | 15" | 15" | 15" | 15" | 15" |
| GREY WATER CAP. | 1-48 GAL. | 1-48 GAL. 1-35 GAL. | 1-48 GAL. 1-35 GAL. | 1-48 GAL. 1-35 GAL. | 1-48 GAL. 1-35 GAL. |
| BLACK WATER CAP. | 48 GAL. | 48 GAL. | 48 GAL. | 48 GAL. | 48 GAL. |
| FRESH WATER | 58 GAL. | 58 GAL. | 58 GAL. | 58 GAL. | 58 GAL. |
| FURNACE BTU | 20 BTU | 30 BTU | 30 BTU | 30 BTU | 30 BTU |
| A/C BTU | 15,000 | 15,000 | 15,000 | 15,000 | 15,000 |
| WATER HEATER | 6 GAL. DSI | 6 GAL. DSI | 6 GAL. DSI | 6 GAL. DSI | 6 GAL. DSI |
| CONVERTER | 55 AMP | 55 AMP | 55 AMP | 55 AMP | 55 AMP |
| AXLE | 2-5200# | 2-5200# | 2-5200# | 2-5200# | 2-5200# |
| SLEEPING | 6 | 4 | 4 | 6 | 6 |
| L.P. GAS BOTTLES | 2-30# | 2-30# | 2-30# | 2-30# | 2-30# |
| AWNING SIZE | 19' | 19' | 19' | 19' | 19' |

The Journey Never Ends.

Superior ALUMINUM Construction



*Outstandingly efficient storage
created by our experienced designers*

All Crossroads RV's feature an all aluminum frame in the superstructure for durability and stability. Borrowing construction methods from the aircraft industry, we use space-age bonding agents and screw assembled aluminum frames. Thus giving our products the same flexibility and stress-resistance found in wings construction. Welds can break under road stress while screws and bonding agents provide even load distribution for superior durability. At Crossroads, the unseen elements of our products are crafted with the same care and integrity as the ones which are seen.

DEALER IMPRINT

Because of continuous product development and improvement, we reserve the right to make changes to any specification listed in this brochure at any time without notice. Please consult your authorized dealer for the most current information.



Crossroads RV, INC.
1115 W. Lake St., P.O. Box 40
Topeka, IN 46571
(219) 593-3850 FAX (219) 593-2088
www.crossroadsrv.com

