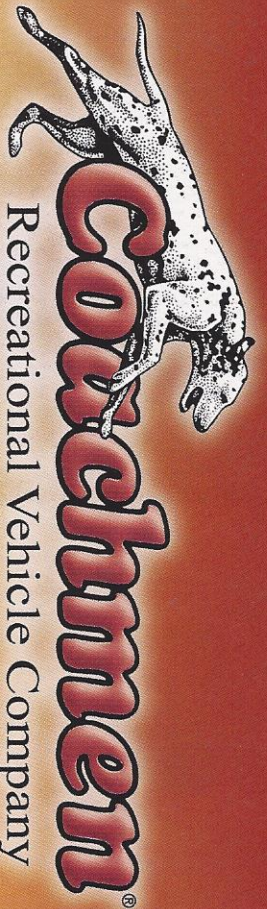


2001 Coachmen **ROYAL** Travel Trailers & Fifth Wheels



Recreational Vehicle Company

**ROYAL**

*The Tradition Continues...*



*Leader to the Great Outdoors*

L  
U  
X  
U  
R  
Y

*Upscale  
luxury...  
down to  
earth price.*

As we enter a new century, Americans' love for travel continues to grow. Motivated by rediscovery of family, self-renewal and a desire to make the most of every day, we respond to the call of the open road like never before. Few towable RVs answer that call like Coachmen Royals.

A unique combination of cutting-edge technology and old-fashioned value, this is an RV built to go the distance. Whether you answer the call of the road by traveling coast to coast or by visiting the nearest campground, Royal's beauty, function and styling says "you've arrived". This is the upscale luxury RV with a down to earth Coachmen price.

Royal's sleek fiberglass sidewalls make an excellent impression on the road while its rugged aluminum framed structure provides outstanding strength and durability. The only word that adequately describes it is: "inspired". Spacious floor plans with luxury accommodations let you make the most of every moment of leisure time - no matter how or where you choose to spend it.



*A comfortable night's sleep is no problem on Royal's deluxe queen bed.*

*The Royal 279SA offers plenty of room and residential appeal.*





F F A T U R E S G A L L O R Y

A complete photo album would be required to fully display the many features and innovations of Royal Travel Trailers and Fifth Wheels. Here are just a few of the many features available from Coachmen RV.

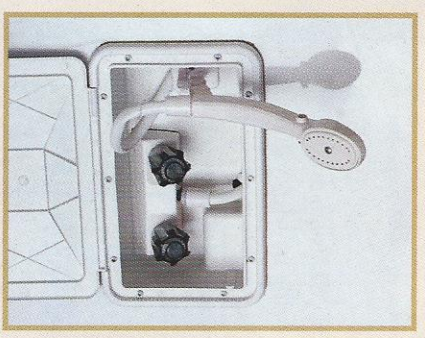
*A well equipped galley offers all the amenities of home.*



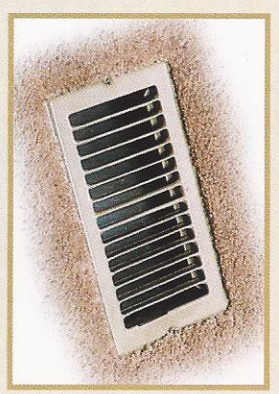
*This elegant glass shower adds style and grace to your surroundings.*



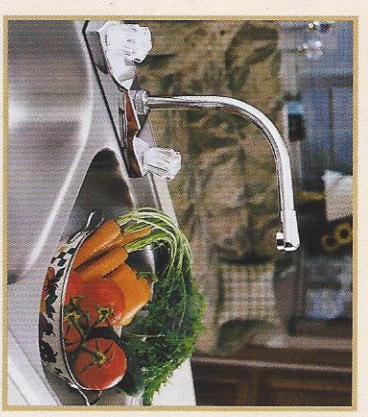
*There is plenty of storage in all Royal floorplans. You don't have to worry about what to bring when you can bring it all.*



*The optional outside shower stores easily with its retractable hose.*



*In-floor ducted heating with formed residential aluminum ducts provide superior durability and even heat distribution throughout the unit.*

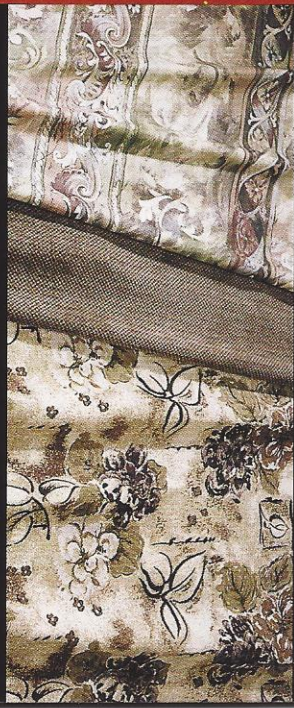


*A contemporary high spout faucet is standard on the stainless steel sink.*

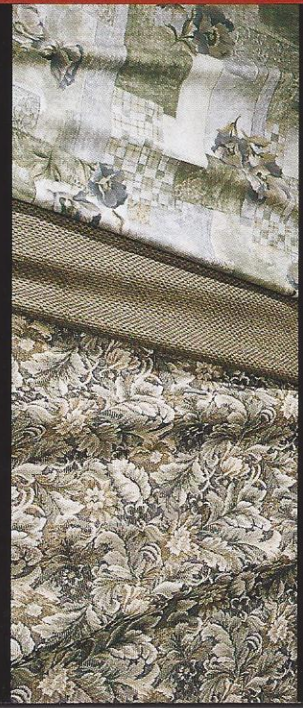
## *Decor Selections*

Dazzling interiors feature skillfully coordinated upholstery and window treatments. Coachmen RV chooses only top-grade fabrics wear-dated as heavy-duty. These fabrics have been tested for durability beyond 15,000 double rubs (in and out action) to simulate heavy usage. An average chair in an American home is subjected to only 3,000 double rubs per year.

*Sandleswood Plum*



*Majestic Meadows*



*Opulence Sand*



# OUTSTANDING SERVICE AND WARRANTY

For over 35 years Coachmen RV has been leading the RV Industry in product design, dependability and customer service support. We work very hard to have our products exceed your expectations. Equally important is the service that we provide during your ownership experience. Whether it be information about your unit, reliable warranties, or industry leading service support... Coachmen RV ranks second to no one.

## Buckstopper Warranty

Your Owner's registration card and our famous Buckstopper Limited Warranty are your passport to worry free travel. Our nationwide network of approximately 300 authorized Coachmen Service Centers stand ready to provide you with courteous, dependable and timely service.

## Two-Year Structural & Major Component Manufacturer's Warranty

In addition to your One Year Buckstopper Limited Warranty, you can travel with confidence knowing that select major structural components such as walls, ceilings, and floors are covered for two years by Coachmen's extended Structural Limited Warranty. Coachmen product also comes with a limited Two Year Major Component Manufacturer's Warranty on select components. Please refer to our Product Warranty Summary Guide for complete details.

## Service Assistance

Coachmen's Service & Parts Department is staffed with trained professionals that are

committed to satisfying your needs.

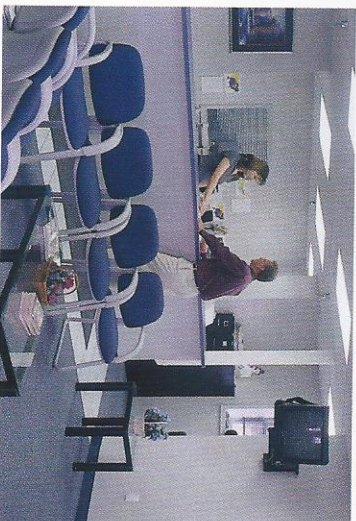
Coachmen provides a toll free service number for your assistance and convenience. And for those rare instances that a replacement part is required for your coach, Coachmen RV provides a Priority Customer Parts Order program for overnight part shipments in critical repair situations.

## Service Support Center Web Site

Presented as an option under the Coachmen RV Company web site (coachmenrv.com), this informative site offers:

- **A Service Dealer Locator System**
- **Maintenance Information**
- **Troubleshooting Information**
- **Product Warranty Summary Information**
- **Customer "E-Assistance" Access**
- **And more...**

Visit our site and see for yourself that Coachmen RV is committed to taking care of our customers.

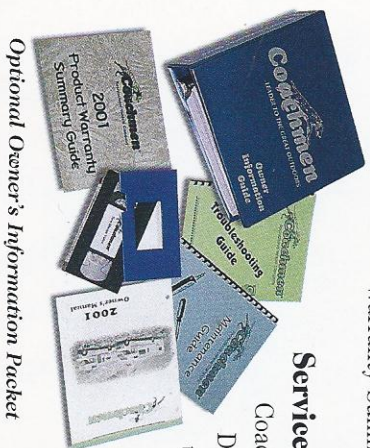


*Coachmen RV features a complete parts and service center at the Middlebury, Indiana complex. Relax during your visit in our comfortable parts and service lounge.*

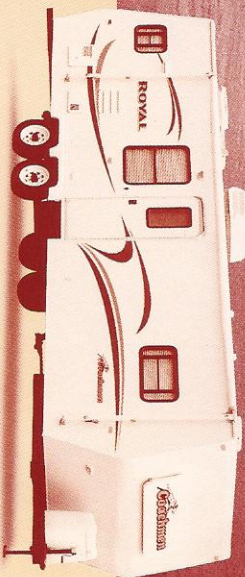
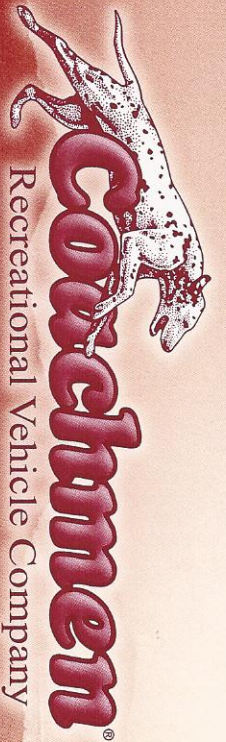
## Ultimate Satisfaction – First

Coachmen RV owners regularly receive comprehensive surveys through our Ultimate Satisfaction – First (US1 Program). US1 questionnaires provide us with valuable information regarding our customers' products, as well as the purchase and ownership experience. Listening to our customers helps us achieve your...

**"Ultimate Satisfaction – First".**

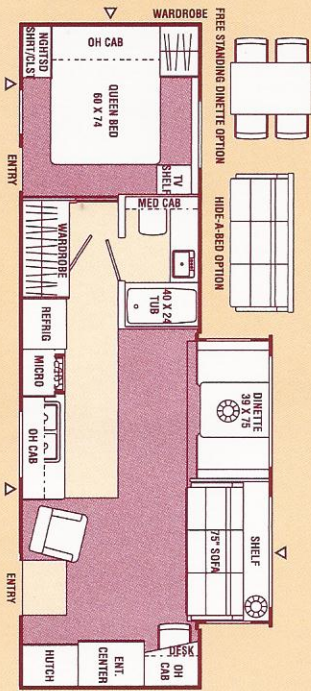


*Optional Owner's Information Packet*

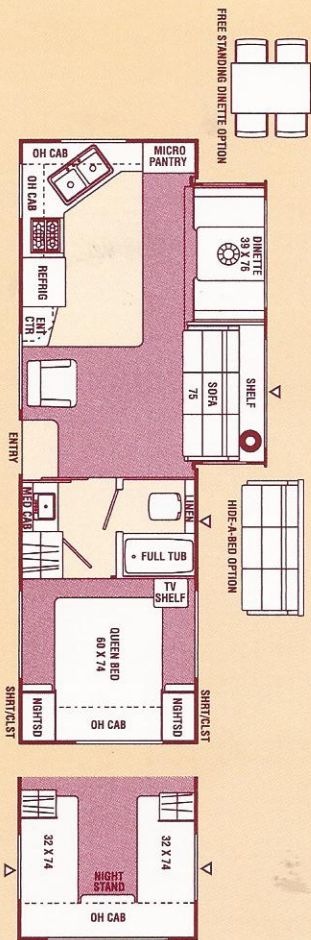


2001 Royal Travel Trailer Floor Plans

291fs / Front Lounge / Slide Out / Wide Body



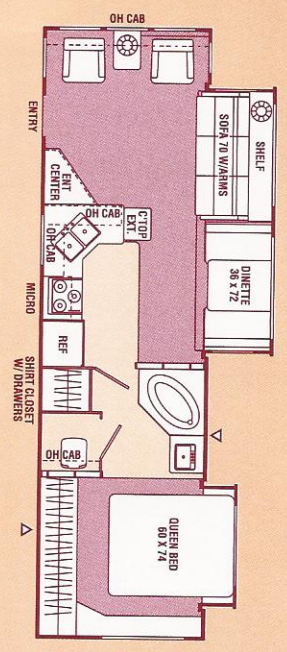
297rks / Rear Kitchen / Slide Out / Wide Body



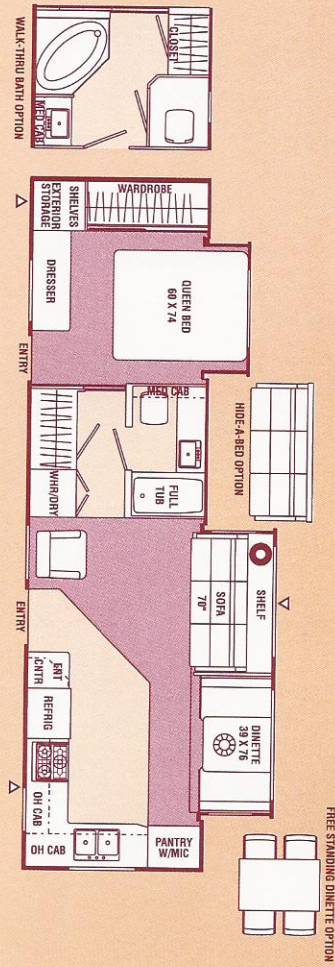
■ INDICATES CARPETING  
 ▽ INDICATES OUTSIDE STORAGE LOCATION



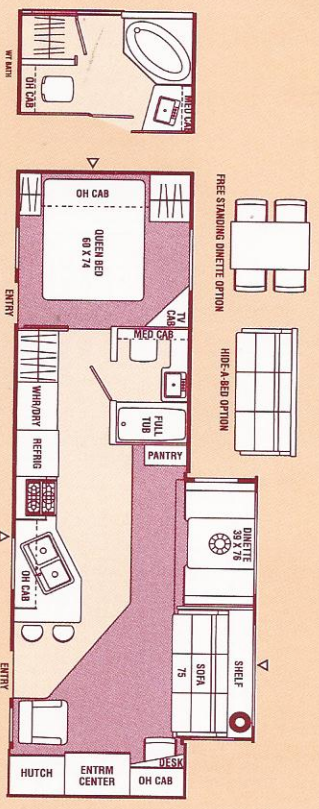
326r1s / Rear Lounge / Double Slide Out



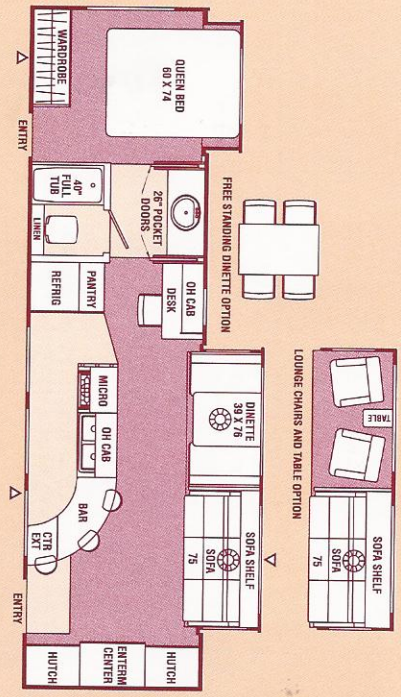
342ds / Dinette Slide Out / Wide Body



338f1s / Front Lounge / Slide Out / Wide Body



361f1s / Front Lounge / Double Slide Out / Wide Body



■ INDICATES CARPETTING  
 ▲ INDICATES OUTSIDE STORAGE LOCATION

# 2001 ROYAL TRAVEL TRAILER SPECIFICATIONS & FEATURES

## Specifications

	291FLS	297RKS	326RLS	338FLS	342DS	361FLS
Base Weight	8,243	7,562	7,850	8,782	9,146	9,252
GVWR	10,800	10,800	10,800	10,800	11,300	11,020
Carrying Capacity	2,557	3,238	2,950	2,018	2,154	1,768
Hitch Weight	1,200	1,070	1,020	1,250	1,540	1,120
Axle Weight	7,043	6,492	6,830	7,532	7,606	8,132
Interior Height	6' 10"	6' 10"	6' 10"	6' 10"	6' 10"	6' 10"
Exterior Height**	10' 3"	10' 3"	10' 4"	10' 4"	10' 4"	10' 4"
Exterior Length	32' 11"	31'	32' 11"	33' 8"	34' 2"	35' 1"
Exterior Width	8' 5"	8' 5"	8' 5"	8' 5"	8' 5"	8' 5"
Hitch Pin Height	19"	19"	20"	20"	20"	20"
Sleeping Capacity	6	6/4	4/6	6/4	6	6
Fresh Water Capacity (gal.)	36	36	36	36	36	36
Waste Water Capacity (gal.)	40	40	42	40	40	42
Grey Water Capacity (gal.)	42	42	42	42	56	70
Water Heater Capacity (gal.)	6	6	6	6	6	6
LP Gas Capacity (lb.)	60	60	60	60	60	60
Furnace Rating (x 1,000)	35	31	35	35	40	40
Tire Size	<input type="checkbox"/>	<input type="checkbox"/>	<input type="checkbox"/>	<input type="checkbox"/>	<input type="checkbox"/>	<input type="checkbox"/>

\* Add 10" for Roof Air Conditioner

\* Add 12" for Satellite Dish

= ST225/75R15D

**Base Weight:** The weight of the unit with no fluids, cargo, optional equipment or accessories. **GVWR (Gross Vehicle Weight Rating):** The maximum permissible weight of the unit, including the Base Weight plus all fluids, cargo, optional equipment and accessories. For safety and product performance, do not exceed the GVWR.

**Carrying Capacity:** The difference between the Base Weight and the GVWR. This is the amount of weight available for all fluids, cargo, optional equipment and accessories. The actual "loaded" weight will depend on the equipped unit and the owner's individual choice of cargo, etc.

**Wider Widths:** Numerous Coachmen floorplans feature the "wide body" design concept, which gives you significantly enhanced interior living space and innovative floorplans.

In making your purchase decision, you should be aware that a few states restrict access on some or all roads within the state to vehicles with a maximum 96" width, although special road usage permits may be available. Vehicles up to 102" in width are permitted in the vast majority of states. You should

confirm the road usage laws in the states of interest to you before making your purchase decision. If width is of concern to you, we invite you to consider the broad array of other Coachmen models offered in the standard 96" width.

All information contained in this brochure is believed to be accurate at the time of publication. However, during the model year, it may be necessary to make revisions and Coachmen reserves the right to make all such changes without notice, including changes in prices, colors, materials, equipment and specifications, as well as the addition of new models and the discontinuance of models shown in this brochure. Therefore, please consult with your Coachmen dealer and confirm the existence of any materials, design or specifications that are material to your purchase decision.

# 2001 ROYAL TRAVEL TRAILER STANDARD FEATURES & OPTIONS

## Standard Features

### INTERIOR AND DECOR

- Golden Cherry Finish Cabinets
- Hardwood Cabinet Doors - Coach & Kitchen
- Residential Metal Drawer Glides
- Partial Carpet with Pad
- Linoletum Flooring - Kitchen & Bath
- Mimi Blinds - Coach
- Mimi Blinds - Bedroom (Except w/Bunks)
- Home Entertainment Cabinet (338FLS)
- Booth Dinette
- Jack Knife Sofa
- Swivel Rocker (Except 361FLS)
- Residential AM/FM Stereo w/Four Speakers
- Cable TV Jack
- TV Antenna and Rotor Package
- TV Shelf - Bedroom
- LP Leak Alarm
- Pre-Wired for Satellite Dish
- Teakwood Drawers

### GALLEY

- Residential Size Microwave Oven
- 3-Burner (High Output) Range with Oven
- Power/Lighted Range Hood
- Flush Mount, Double Door Refrigerator
- Monitor Panel
- Stainless Steel Sink
- Silverware Drawer

### SLEEPING

- Queen Bed
- Deluxe Innerspring Mattress - 312 Coil
- Bedspread and Pillow Shams
- Bedlift System on Island QB

### BATH AND WATER

- Marine Toilet
- Power Bath Vent
- One-Piece ABS Tub Surround
- 6-Gallon Water Heater
- Below Floor Low Point Drains
- Water Heater By-Pass Valve
- Demand Water Pump
- Decorative Bath Hardware
- Medicine Cabinet

### ELECTRICAL/HEATING/AIR CONDITIONING

- 30-Amp. Service
- GFI Circuit
- Outside GFI Receptacle
- Patio Light
- Off Door Side Utility Light
- LP Light
- Double 30 LB LP Bottles w/Auto Change-Over
- 31,000 BTU E.I. Furnace (297RKS)
- 35,000 BTU E.I. Furnace (291FLS, 326RLS & 338FLS)
- 40,000 BTU E.I. Furnace (342DS & 361FLS)
- In-Floor Ducted Heat
- 13,500 BTU Ducted Roof Air Conditioner

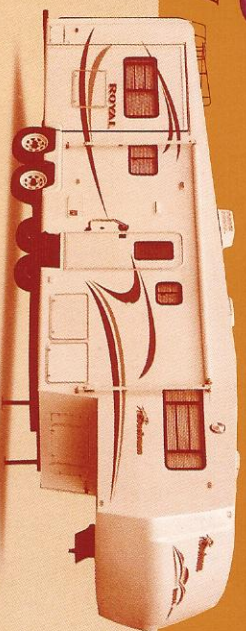
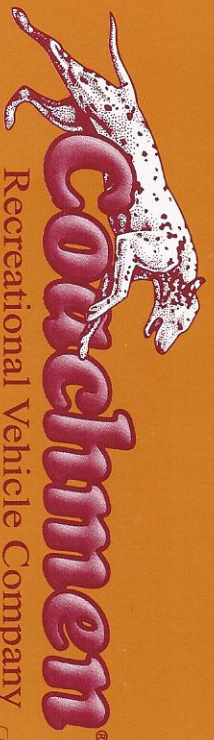
### EXTERIOR/CONSTRUCTION

- Rubber Roof
- Fiberglass Insulation
- Gutter Rail
- 30" Wide Radius Entrance Door
- Rear Hose Storage Steel Bumper
- Triple Entry Steps at Primary Door
- Dead Bolt Lock(s)
- Secondary Entrance Door (Except 297RKS & 326RLS)
- Rack & Pinion Slide Out Room
- Retractable Stabilizer Jacks (Slide Models)
- Straight Axles (Slide Models)
- Radial Tires/Rally Wheels
- Radius Baggage Doors
- Filon® Fiberglass Sidewalls
- Clear Safety Glass Radius Windows
- Aluminum Framed Walls & Roof
- I-Beam Chassis Construction
- Patio Awning

## Optional Features

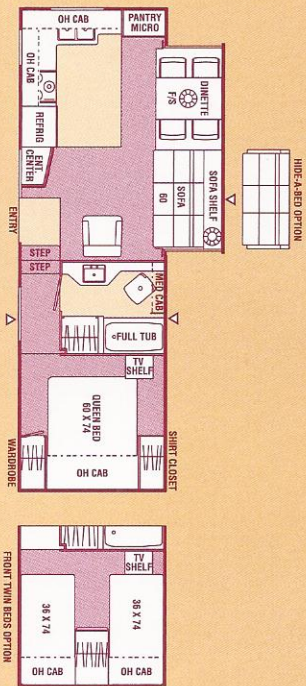
- Twin Beds (297RKS)
- Two Bar Stools (338FLS)
- Three Bar Stools (361FLS)
- Free-Standing Dinette w/4 Chairs
- Lounge Chairs w/Table (361FLS)
- Deluxe Sofa w/Hide-A-Bed (291FLS, 297RKS, 338FLS & 342DS)
- Satellite TV System (Includes Certificate for Free Receiver with the Purchase of 4 Months Programming)
- Outside Entertainment Center
- Combo: Washer and Dryer (338FLS & 342DS) (Includes Plumbing and 10 Gallon Gas/Electric Water Heater)
- Washer/Dryer Ready (338FLS & 342DS) (Includes Plumbing and 10 Gallon Gas/Electric Water Heater)
- Phone Jack
- Wall Hugger Recliner (Except 361FLS)
- Large, Flush Mount, Double Door Refrigerator
- 6-Gallon Gas/Electric E.I. Water Heater
- 6-Gallon E.I. Water Heater
- 10-Gallon Gas/Electric E.I. Water Heater (338FLS & 342DS)
- Glass Shower Door (326RLS, 338FLS & 342DS)
- Bifold Shower Door (338FLS w/Walk Thru Bath Option Only)
- Walk Thru Bath (338FLS & 342DS)
- Outside Shower
- Tinted Safety Glass - Radius Windows
- 15,000 BTU Roof A/C (Coach)
- 2nd 13,500 BTU Roof Air Conditioner (Except 297RKS)
- Wire and Frame 2nd Air Conditioner (Except 297RKS)
- 50 Amp. Service (Except 297RKS) (Mandatory with 2nd Roof A/C, Wire and Frame for 2nd A/C, Washer/Dryer & Washer/Dryer Ready Options)
- LP Bottle Cover
- Power Hitch Jack
- Spare Tire Kit
- Slide Out Room Awning-Bedroom (326RLS, 342DS & 361FLS)
- Slide Out Room Awning-Off Door (All Slide Models)
- CSA Upfit (Mandatory for All Canadian Provinces)
- Vinyl Plank Flooring-Kitchen
- Two Wall Hugger Recliners (326RLS & 361FLS)
- Bathroom Skylight (18")
- Sliding Patio Door (326RLS, 338FLS & 342DS)

2001 ROYAL FLOORPLANS & SPECIFICATIONS

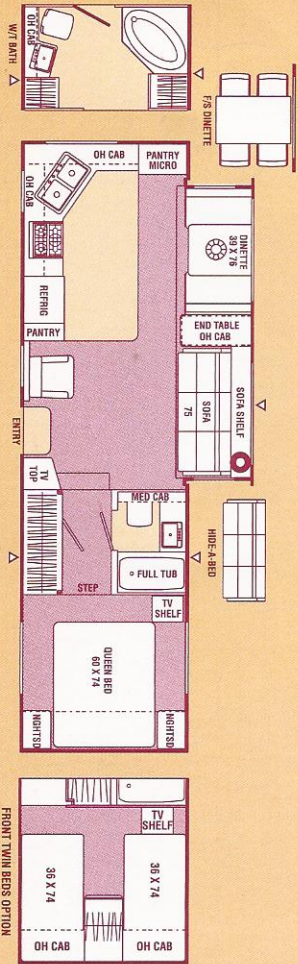


2001 Royal Fifth Wheel Floorplans

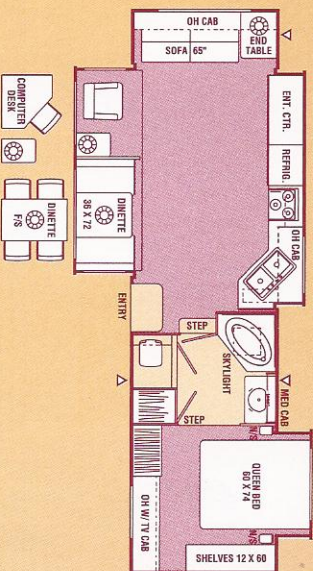
2798a / Side Aisle / Slide Out / Wide Body



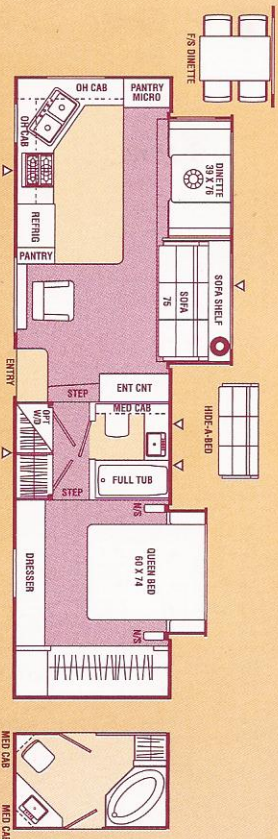
285rksw / Rear Kitchen / Slide Out / High Profile / Wide Body



318rfts / Rear Lounge / Triple Slide Out / High Profile / Wide Body



320rks / Rear Kitchen / Double Slide Out / High Profile / Wide Body



■ INDICATES CARPETTING  
 ▲ INDICATES OUTSIDE STORAGE LOCATION



# 2001 ROYAL FIFTH WHEEL SPECIFICATIONS & FEATURES

## Specifications

	279SA	285RKS	318RLTS	320RKS	325RLS	358RLTS	365IKS
Base Weight	8,447	9,256	10,700†	10,756	10,081	11,653	12,393
GVWR	12,000	11,880	14,630†	14,680	14,830	14,830	15,000
Carrying Capacity	3,553	2,624	3,875†	3,924	4,749	3,177	2,607
Hitch Weight	2,000	1,880	2,630†	2,680	2,830	2,830	3,100
Axle Weight	6,447	7,376	8,026†	8,076	7,251	8,823	9,293
Interior Height	6' 10"	6' 10"	6' 10"	6' 10"	6' 10"	6' 10"	6' 10"
Exterior Height**	11' 10"	11' 10"	11' 11"	11' 11"	11' 11"	11' 11"	11' 11"
Exterior Length	28'	31' 4"	32' 6" †	33' 8"	33' 8"	36' 5"	36' 5"
Exterior Width	8' 5"	8' 5"	8' 5"	8' 5"	8' 5"	8' 5"	8' 5"
Hitch Pin Height	45"	45"	45"	45"	45"	45"	45"
Sleeping Capacity	4	6/4	4/6	4/6	4	6	4/6
Fresh Water Capacity (gal.)	53	53	47	53	50	54	54
Waste Water Capacity (gal.)	50	40	40	40	50	50	50
Grey Water Capacity (gal.)	50	40	40	40	50	50	50
Water Heater Capacity (gal.)	6	6	6	6	6	6	6
LP Gas Capacity (lb.)	60	60	60	60	60	60	60
Furnace Rating (x 1,000)	31	31	35	35	35	40	40
Tire Size	X	X	<input type="checkbox"/>	<input type="checkbox"/>	<input type="checkbox"/>	<input type="checkbox"/>	<input type="checkbox"/>

\* Add 10" for Roof Air Conditioner

\* Add 12" for Satellite Dish

† = Estimated at time of printing

= L17235/5SR16E

X = S1225/5SR15D

**Base Weight:** The weight of the unit with no fluids, cargo, optional equipment or accessories.  
**GVWR (Gross Vehicle Weight Rating):** The maximum permissible weight of the unit, including the Base Weight plus all fluids, cargo, optional equipment and accessories. For safety and product performance, do not exceed the GVWR.

**Carrying Capacity:** The difference between the Base Weight and the GVWR. This is the amount of weight available for all fluids, cargo, optional equipment and accessories. The actual "loaded" weight will depend on the equipped unit and the owner's individual choice of cargo, etc.

**Wider Widths:** Numerous Coachmen floorplans feature the "wide body" design concept, which gives you significantly enhanced interior living space and innovative floorplans.  
 In making your purchase decision, you should be aware that a few states restrict access on some or all roads within the state to vehicles with a maximum 96" width, although special road usage permits may be available. Vehicles up to 102" in width are permitted in the vast majority of states. You should

confirm the road usage laws in the states of interest to you before making your purchase decision. If width is of concern to you, we invite you to consider the broad array of other Coachmen models offered in the standard 96" width.

All information contained in this brochure is believed to be accurate at the time of publication. However, during the model year, it may be necessary to make revisions and Coachmen reserves the right to make all such changes without notice, including changes in prices, colors, materials, equipment and specifications, as well as the addition of new models and the discontinuance of models shown in this brochure. Therefore, please consult with your Coachmen dealer and confirm the existence of any materials, design or specifications that are material to your purchase decision.

# 2001 ROYAL FIFTH & WHEEL STANDBARD FEATURES & OPTIONS

## Standard

### Interiors

- Golden Cherry Finish Cabinets
- Hardwood Cabinet Doors - Coach & Kitchen
- Residential Metal Drawer Glides
- Carpet with Pad - Living Room & Bedroom
- Mini Blinds - Coach
- Mini Blinds - Bedroom
- Limoleum Flooring - Kitchen & Bath
- Mini Blind - Kitchen
- Side Dinette (285RKS, 318RLTS, 320RKS, 358RLTS & 365IKS)
- Free Standing Dinette (279SA & 325RLS)
- Jack Knife Sofa
- Swivel Rocker
- Cable TV Jack
- Laundry Chute (279SA & 320RKS w/Side Bath Only)
- TV Shelf - Bedroom
- LP Leak Alarm
- Trash Can
- Pre-Wired for Satellite Dish
- Teelwood® Drawers
- Pre-Wired for Phone
- Residential AM/FM Cassette CD w/4 Speakers

### GALLEY

- Residential Size Microwave Oven
- 3-Burner (Flight Output) Range with 21" Oven
- Power/Lighted Range Hood
- Flush Mount, Double Door Refrigerator
- Monitor Panel
- Stainless Steel Sink (Except 279SA)
- Silverware Drawer (Except 325RLS & 358RLTS)
- Composite Sink (279SA)
- Shoe Racks (Except 279SA & 285RKS)
- Plastic Coated Steel Shelves (Except 279SA & 285RKS)

### SLEEPING

- Queen Bed
- Deluxe Innerspring Mattress - 312 Coil
- Bedspread and Pillow Shams
- Bedlift System on Island QB

### ELECTRICAL/HEATING/AC

- 30-Amp. Service (279SA, 285RKS & 318RLTS)
- GFI Circuit
- Outside GFI Receptacle
- Patio Light
- Off-Door-Side Utility Light
- Hitch Light

- Double 30 LB LP Bottles w/Auto Change-Over
- 31,000 BTU E.I. Furnace (279SA & 285RKS)
- 35,000 BTU E.I. Furnace (320RKS & 325RLS)
- 40,000 BTU E.I. Furnace (358RLTS & 365IKS)
- In-Floor Ducted Heat
- 13,500 BTU Ducted Roof Air Conditioner

### BATH AND WATER

- Marine Toilet
- Power Bath Vent
- Water Works Panel
- 6-Gallon Water Heater
- Water Heater By-Pass Valve
- One-Piece ABS Tub Surround
- Demand Water Pump
- Decorative Bath Hardware
- Medicine Cabinet
- Below Floor Low Point Drains

### EXTERIOR/CONSTRUCTION

- Clear Safety Glass Radius Windows
- Rubber Roof
- Fiberglass Insulation
- Fiberglass Sidewalls
- Triple Entry Step - Primary Door
- Dead Bolt Lock(s)
- Rear Hose Storage Steel Bumper
- Electric Slide Room
- Retractable Stabilizer Jacks
- 30" Wide Radius Entrance Door
- Radial Tires
- Rally Wheels
- Radius Baggage Doors
- Aluminum Framed Walls and Roof
- Fold Away Exterior Grab Handle
- Enclosed Underbelly
- Wrap Lower Sidelwalls
- Front & Rear Claps
- Patio Awning

### Optional Features

- Twin Beds (279SA & 285RKS)
- Free-Standing Dinette w/Pour Chairs (Except 279SA & 325RLS)
- Rear Sofa (358RLTS)
- 3 Bar Stools (365IKS)
- Deluxe Sofa w/Hide-A-Bed (Except 365IKS)
- Rear Entertainment Center (325RLS & 358RLTS)
- Wall Huger Recliner
- Two Wall Huger Recliners (325RLS, 358RLTS & 365IKS)
- Vinyl Plank Flooring (Except 365IKS)

- 13" Color TV (285RKS)
- 19" Color TV (320RKS & 358RLTS)
- 25" Color TV (325RLS, 358RLTS & 365IKS)
- Outside Entertainment Center
- Washer/Dryer Ready (320RKS, 325RLS, 358RLTS & 365IKS) (Includes Plumbing & 10-Gallon Gas/Electric E.I. Water Heater)
- Combo Washer/Dryer (320RKS, 325RLS, 358RLTS & 365IKS) (Includes Plumbing & 10-Gallon Gas/Electric E.I. Water Heater)
- Six Panel Refrigerator Door Insert
- Phone Option
- Range Cover Option
- Phone Jack
- Two Double Door Refs (320RKS & 365IKS)
- Large, Flush Mount, Double Door Refrigerator
- 6-Gallon Gas/Electric E.I. Water Heater
- 6-Gallon E.I. Water Heater
- 10-Gallon Gas/Electric E.I. Water Heater (Except on 279SA, 285RKS & 318RLTS)
- Glass Shower Door
- Walk Thru Bath (285RKS & 320RKS)
- Mid Bath (325RLS)
- Outside Shower
- Ceiling Fan w/Light (Except 365IKS)
- Tinted Safety Glass - Radius Windows
- 15,000 BTU A/C (Coach)
- Second Non-Ducted 13,500 BTU Roof Air Conditioner (279SA, 285RKS, 318RLTS, 320RKS & 325RLS)
- Second Ducted 13,500 BTU Roof Air Conditioner (358RLTS & 365IKS)
- Wire and Frame for 2nd A/C (Standard on 358RLTS & 365IKS)
- 50 Amp. Service (Mandatory with 2nd Roof A/C, Wire and Frame for 2nd A/C, Washer/Dryer & Washer/Dryer Ready Options)
- 7.0 Generator (320RKS, 325RLS, 358RLTS & 365IKS)
- Generator Ready (320RKS, 325RLS, 358RLTS & 365IKS)
- Electric Front Jacks - Single Motor (279SA & 285RKS)
- Electric Front Jacks - Dual Motor (Except 279SA & 285RKS)
- Spare Tire Kit
- Roof Ladder
- Shock Absorbers
- Slide-Out Room Awning - Doorside (318RLTS, 358RLTS & 365IKS)
- Slide-Out Room Awning - Bedroom (Except on 279SA & 285RKS)
- Slide-Out Room Awning Off Doorside
- Satellite TV System (Includes Certificate for Free Receiver with the Purchase of 4 Months Programming)
- CSA Uplite (Except 318RLTS, 358RLTS & 365IKS) (Mandatory for All Canadian Provinces)
- 18" Bathroom Skylight
- Door Side & Off Door Side Security Lights
- Corner Computer Desk (318RLTS, 325RLS & 365IKS)



Visit our website at: [www.coachmentrv.com](http://www.coachmentrv.com)

COACHMEN RECREATIONAL VEHICLE COMPANY P.O. Box 30, Middlebury, IN 46540 • P.O. Box 948, Fitzgerald, GA 31750

# QUALITY & VALUE

**Coachmen RV Company has a long and proud history of quality product with unparalleled value and true commitment to the thousands of RV enthusiasts that have chosen Coachmen as their RV of choice.**

## A Proud History of Quality & Value

Coachmen RV Company is a proven leader in the RV Industry with over 35 years of experience. Our mission is to make your total RV ownership experience the best possible, by offering you the highest quality and reliability on the market today. Whether you look at our full breadth of product and model offerings, our Industry first Buckstopper Warranty, our customer driven service assistance, our Coachmen Caravan camping club or our proven track record... Coachmen RV Company is understandably the...

**"Leader to the Great Outdoors".**

In 1964 Coachmen Industries was founded by three brothers, Tom, Keith and Claude Corson with a dream and a vision of dedication to the enrichment of your life through enjoyment of the RV lifestyle. They built Coachmen on principles such as:

- **Practice the Golden Rule**
- **Our Word is Our Bond**
- **Business goes where it is invited and stays where it is well cared for**

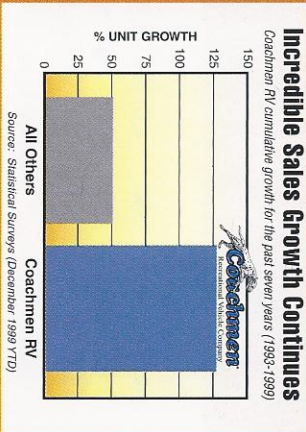
Through these principles, Coachmen has flourished over the years and become the leader throughout the RV Industry. We've learned what makes an RV reliable, practical and enjoyable, as well as, how to enhance the RV lifestyle once you have chosen a Coachmen RV. We have accomplished this by listening to our customers. Our product's design, features and amenities are driven by our customers. We listen because we care! And because we listen, our products, our services and our

programs are the best in the Industry. Coachmen products are designed with your needs in mind!

Come and enjoy the RV lifestyle. Create memories of a lifetime with your family and friends. Take a closer look at the...

**"Leader to the Great Outdoors" – Coachmen RV Company.**

*Come visit us at our Complex in Middlebury, Indiana where you can relax at our Visitor's Center and enjoy guided tours of the assembly plants. Also visit us at our facilities in Fitzgerald, Georgia, Goshen, Indiana and Grants Pass, Oregon.*



# TAKE A CLOSER LOOK AT COACHMEN QUALITY AND CONSTRUCTION

**1** We believe in our products and back them with a two year structural and major components warranty.

**2** We deck our entire roof to add strength and to assure a smooth roof, which improves water run off.

**3** Aluminum roof trusses offer terrific strength.

**4** Wood cabinets, are screwed (not stapled!) to backers in the sidewalls so they stay secure and won't pull free.

**5** Our entry door is 30" wide, has an integrated drip rail and is painted to avoid unattractive metal oxidation which occurs on unpainted door frames.

**6** Fiberglass front and rear caps allow for better aerodynamics and are extremely durable. (fifth wheels only)

**7** Our sidewalls are built with welded 1-1/2" tubular aluminum set on 16" centers, with double framing around entrance doors to provide exceptional strength.

**8** We insulate around the refrigerator to improve operating efficiency and prolong the trouble free life of the refrigerator.

**10** Plumbing - All fresh water lines are polyethylene (crack and freeze resistant). Holding tanks are crafted from a durable, rotocast polypropylene.

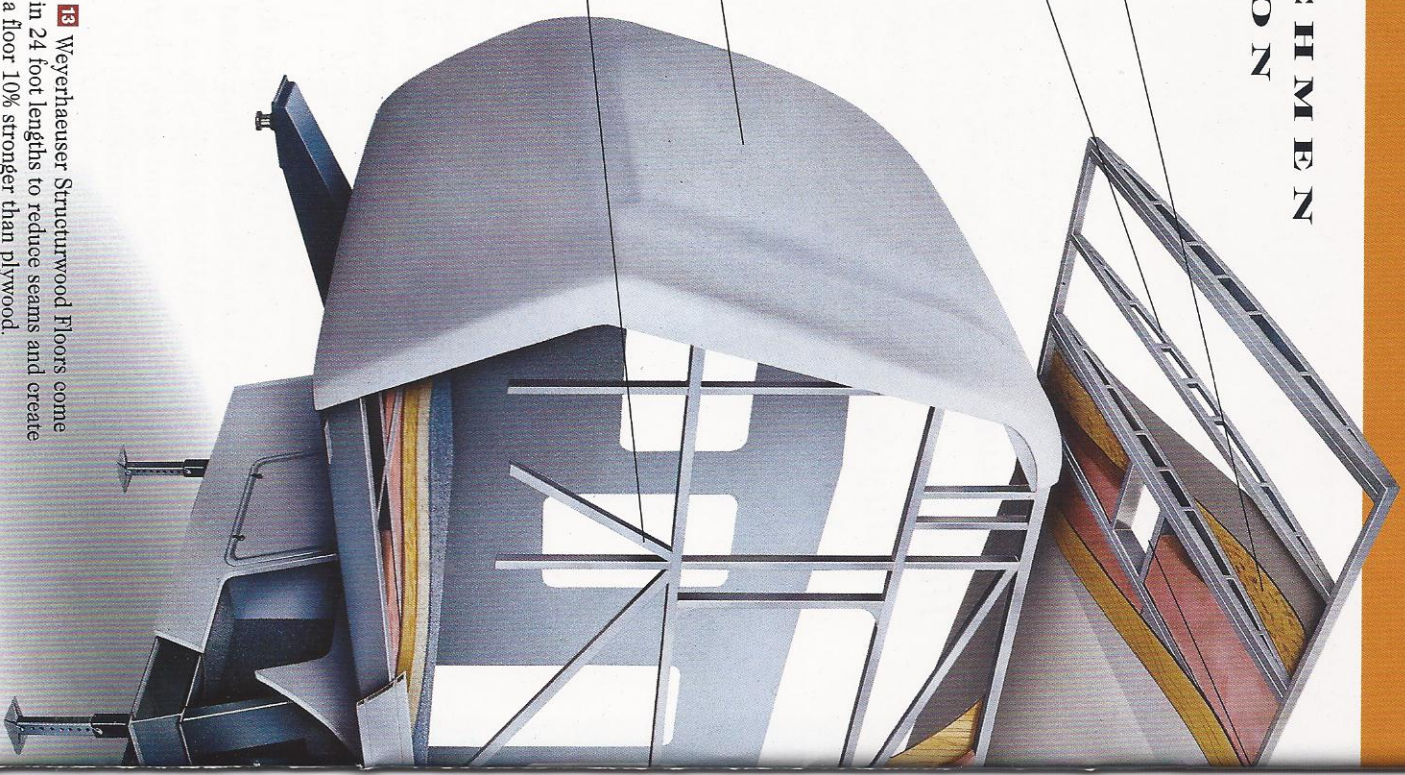
**11** Take a look under the floor at our well organized and secure electrical wiring and LP lines.

**12** Residential style aluminum floor ducting distributes heat throughout the unit from a centrally located electronic ignition furnace.

**13** Weyerhaeuser Structurwood Floors come in 24 foot lengths to reduce seams and create a floor 10% stronger than plywood.



**9** All copper LP lines with double flare fittings help assure no rust will back up into and damage your appliances the way black steel LP lines can.



**28** Coachmen's "Even Cool" ducted roof air conditioning provides quiet, cool air that easily distributes through the same extruded baffled ducting used in household construction.

**27** Our slide room openings are triple studded using 1-1/2" welded tubular aluminum to provide tremendous strength to the slide room area.

**26** Seamless rubber roofs are crowned to allow controlled water run-off, which helps prevent leaks.

**23** We taper the slideroom roof to assure controlled water run-off.

**22** We use only radius clamp ring windows which have no exterior fasteners or screw covers. We seal our windows with butyl encapsulated foam for years of trouble free use.

**21** Windows in the slideroom sidewall provide an open feeling and are always slide windows (not jalousie) to prevent accidents when moving your slideroom.

**20** Owens-Corning fiberglass insulation, with an R-7 rating, is carefully hand packed between each stud to maximize the insulation's effectiveness.

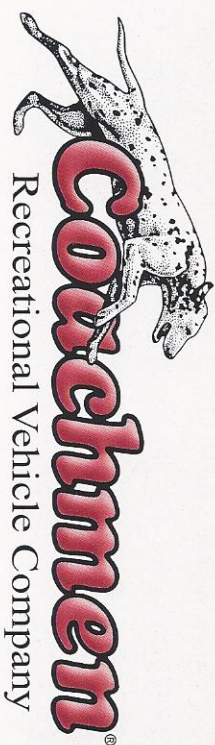
**19** Slide room floors are framed in tubular steel to provide a solid foundation.

**18** All wheel wells are galvanized steel and are sealed and undercoated with Kendall Automotive Sound & Seal.

**17** We wrap the entire underbelly with an extremely tear resistant, fiber laminated, polypropylene material called Darco to help keep water and dirt out.

**15** Independent suspension and brakes on all wheels with automotive studded hubs and lug nuts.

**14** Steel framing, with full width steel outriggers and cross members provide a reliable foundation to build upon.



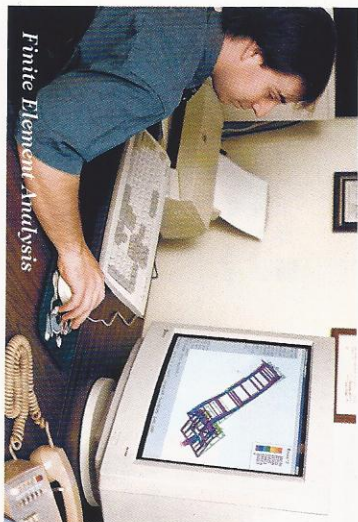
**25** All roof seams are sealed with butyl rubber based sealants that expand and contract with the climate to help prevent leaks.

**24** Safety is utmost. The LP leak alarm, fire extinguisher, smoke detector and heavy link safety chain are all standard.

**16** All outside storage doors have latches to hold the door open which makes access to the storage areas easier. Abundant interior storage includes large residential style closet drawers and innovative under sink utensil drawer. All drawers utilize reliable metal drawer glides.

Founded in 1964, Coachmen is one of the oldest, continuous producing manufacturers of recreational vehicles. A secret of our success is our commitment to the continuous improvement of our products. We have learned that quality must be designed and built into the products, up front. Combining experience and technology, we are able to prevent many problems before they arise, through proper analysis and testing.

## Up Front Design for Long Term Comfort



### Design & Analysis

Unlike most companies, Coachmen uses computerized technology for much more than simple drafting applications.

At Coachmen RV, we utilize and rely on advanced computer technology to design and engineer a reliable and safe vehicle for you and your family. Finite Element Analysis helps evaluate structural integrity of components and systems quickly and efficiently. 3D model simulations and numerous other process and software systems are also used in the design and development of Coachmen recreational vehicles.

Computer weight testing is performed on every new model. Before a floorplan is approved, we know the approximate weights, including dry and loaded, front and rear axle weights and even side-to-side weights which effect towing. After a model is built, the computer analysis is manually verified.

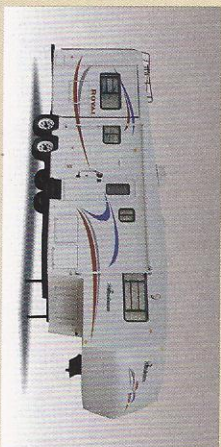
### Performance Testing

Coachmen does not want, nor expect, our customers to be the "proving ground". We believe it is our job to adequately test our products, before they reach our customers.

Coachmen subjects its new models to a myriad of stringent tests, before introduction to the customer. Rigorous road tests, sometimes up to 15,000 simulated miles, are performed on actual production units, to verify computer modeling. Studies are made of structural integrity, stress analysis, cabinetry durability, weight loading, vibration analysis and handling. There can be little doubt that Coachmen has superior quality – by design.

### Accurate & Specific Weights

Every Coachmen model has a weight label to provide you with the specific and accurate weights and ratings of your unit. These comprehensive weight information labels are posted in your vehicle providing you with critical information such as the unit's Gross Vehicle Weight Rating and Carrying Capacity.



### Leak Prevention

Every corner – at the roof, floor and sidewall is wrapped, sealed and secured. All roof and sidewall openings receive framing reinforcement, and are sealed with a non-shrinking, pliable silicone.

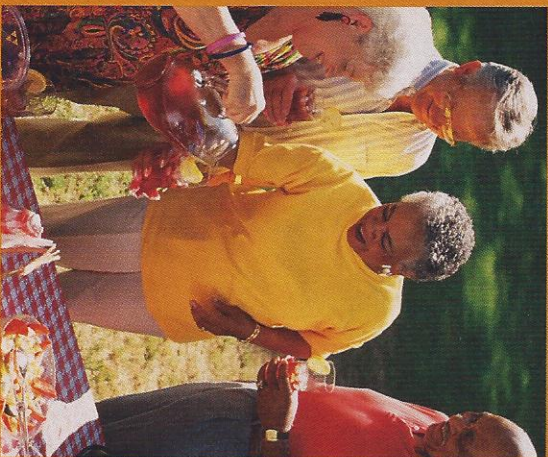
To promote water drainage and leak protection, all roofs have tapered rafters.

Finally, every unit we produce is tested for leaks in a high-pressure rain chamber, designed to simulate a driving rain, not just a spring shower. Coachmen goes the extra mile to ensure a quality built and hassle free RV.

# INTERNATIONAL COACHMEN CARAVAN

## Enjoy Your Coachmen RV More with International Caravan

**International Coachmen Caravan Offers Friends and Fun for Life. With your purchase of a Coachmen RV you are invited to join the nation's largest manufacturer sponsored RV club at a discounted rate...International Coachmen Caravan.**



Consisting of over 23,000 member families, the Coachmen Caravan was established in 1966 to help our owners enjoy RV ownership to its fullest.

With the Coachmen Caravan there are unlimited opportunities for you and your family to form lifelong friendships; improve and share your unique talents, skills and crafts; be active in running your club; and exchange ideas, information and helpful hints – all these, plus the many benefits outlined below, are uniquely yours through the International Coachmen Caravan.

### **Incredible Membership Benefits.**

Your Caravan membership brings you a multitude of benefits that will help to ensure your safety and enjoyment throughout your RV experiences:

- Free \$5,000 Accidental Death and Dismemberment Insurance policy
- Emergency road service and RV Insurance available at special low rates

- Free trip-planning service
- 10% Discounts at over 4,000 campgrounds in the U.S. and Canada
- Free annual Campground Directory
- Hassle-free group travel to popular destinations
- Organized campouts, meeting and parties
- Free subscription to Coachmen Capers, the club's quarterly magazine
- Annual International Rally Week
- A Coachmen Caravan MasterCard
- Free I.D. card, Caravan key ring, vehicle decals and I.D. numbers
- Discounts on club clothing, accessories, film developing and selected RV publications

## COACHMEN RV INVITES PUBLIC TO TOUR FACILITIES

The Coachmen Visitor's Center in Middlebury, Indiana is your starting point for weekday tours of our motorhome, travel trailer and fifth wheel manufacturing plants. Also located at the Visitor's Center is the headquarters of the International Coachmen Caravan Owner's Club and the Coachmen RV store "Pete's Market", loaded with a large selection



of Coachmen RV clothes and merchandise. Please call ahead for tour information and times. The Coachmen RV plants in Fitzgerald, Georgia, Goshen, Indiana and Grants Pass, Oregon produce travel trailers and fifth wheels only. Motorhome production tours are available only at the Middlebury location.

# A COMPANY YOU CAN TRUST SINCE 1964

It all began in 1964. A small company started on its way to becoming one of the most recognized names in the Recreational Vehicle Industry. Right away

Coachmen started earning the reputation as a leader.

From the beginning it was obvious that

Coachmen is a company that cares about the products

it produces and the people who enjoy them; always looking for better ways to bring the pure enjoyment of the RV Lifestyle to more and more families.

In the nearly four decades since Coachmen's modest beginnings, countless companies have come and gone.

But Coachmen has stayed the course. From product

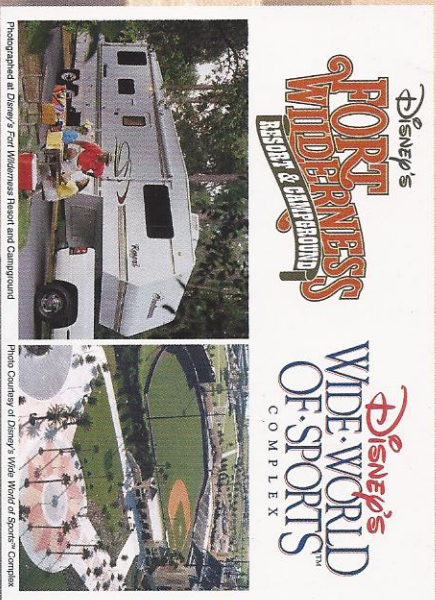
development to service after the sale, Coachmen has helped set the standards for others to follow. Many of today's product designs, manufacturing techniques and product warranties are a result of Coachmen innovations.

Coachmen—Celebrating over 35 Years as "Leader to the Great Outdoors."

## COACHMEN RV FORMS ALLIANCE WITH DISNEY

Coachmen RV Company and WALT DISNEY WORLD® Resort, respective leaders in the recreational vehicle (RV) and entertainment/family vacation industries, have formed an alliance that will allow the companies to work together into the new millennium. Coachmen is now the Official RV of Disney's *Fort Wilderness Resort and Campground* and Disney's *Wide World of Sports™* Complex in Florida.

As part of this new alliance, Coachmen RV's will be prominently displayed at Disney's 750-acre campground resort Disney's *Fort Wilderness Resort and Campground*, affectionately known as the "most magical campground in the World", hosts nearly 800 campsites, 700 of which are full hook-up sites for RVs. It also features over 400 deluxe Wilderness Cabins as well as various recreational and entertainment facilities.



This elite resort is one of the three original vacation resorts opened when WALT DISNEY WORLD® Resort premiered in 1971. A Coachmen RV will be displayed near Pioneer Hall, home of the popular Hoop-Dee-Do Musical Revue, the longest running dinner show at WALT DISNEY WORLD® Resort.

Coachmen RV's will also be a part of the Disney magic at Disney's *Wide World of Sports™* Complex. Spanning 200 acres, this ultra modern facility, features a 10,000 seat baseball stadium which is also the spring training home of the Atlanta Braves. The complex, designed for athletes and fans alike, includes numerous state-of-the-art playing fields and venues serving a wide variety of sports. Disney's *Wide World of Sports™* is truly the "ultimate sports destination".



Visit our website at: [www.coachmenrv.com](http://www.coachmenrv.com)

COACHMEN RECREATIONAL VEHICLE COMPANY  
P.O. Box 30, Middlebury, IN 46540 • P.O. Box 948, Fitzgerald, GA 31750



**JERRY'S TRAILERS & CAMPERS**

2601 S. 13th St.  
Norfolk, NE 68701  
(402) 371-1306