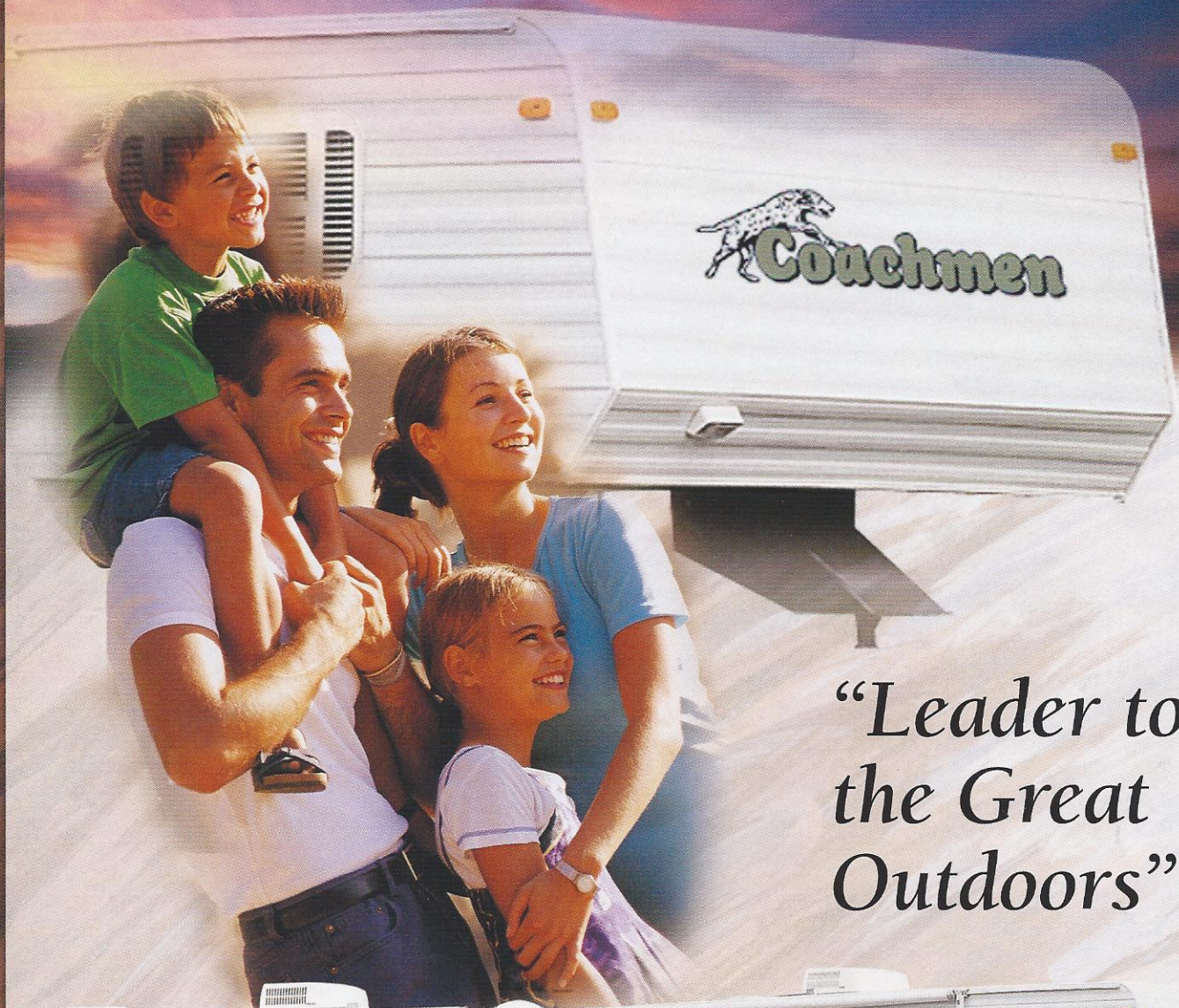


2001 CATALINA LITE TRAVEL TRAILERS & FIFTH WHEELS



*“Leader to
the Great
Outdoors”*

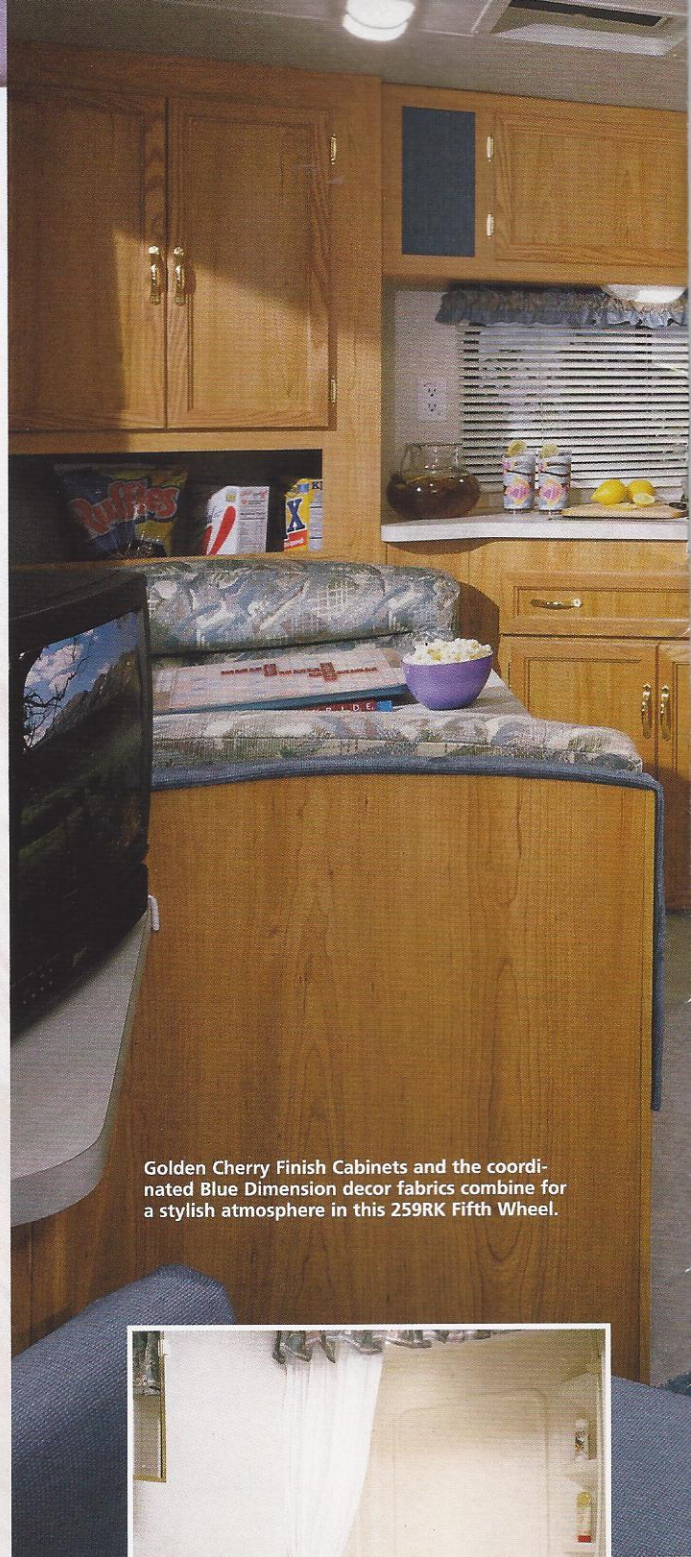


Premium Family Time, Coachmen Style

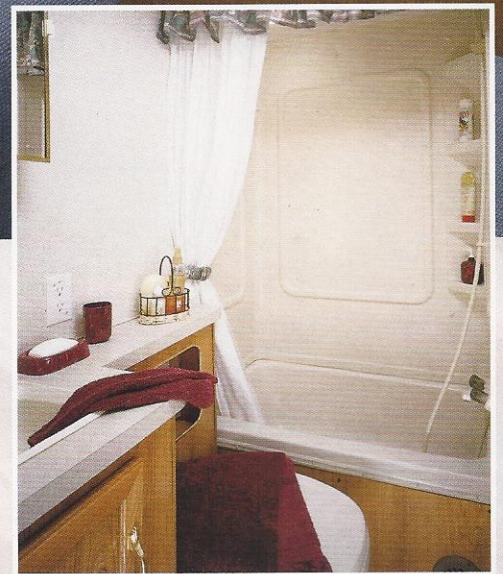
Life's daily demands pull us all in different directions. Too often, those demands put family time on hold. Want to escape? Catalina LITE is the answer!

This is the way leisure time was meant to be. No phones, no yard work, no hassles. Just your family, the open road and all the comforts of home. Catalina LITE is wonderfully affordable – far less expensive than traveling to a hotel and eating out all weekend. Best of all, Catalina LITE can be towed by many of today's popular family vehicles (see our tow vehicle guide for details). Escape from what doesn't matter and enjoy what does!

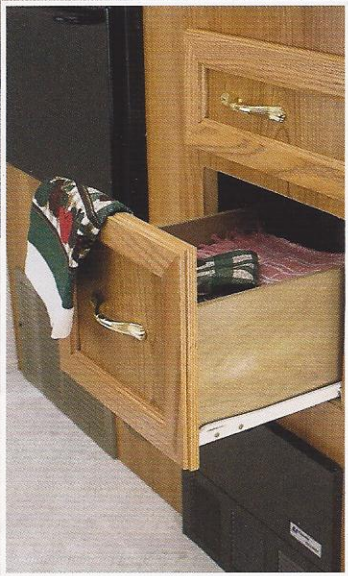
The only thing that doesn't feel like home is Catalina LITE's easy maintenance inside and out! It's designed that way so your leisure time stays leisurely. All you do is pack, hitch, and go! Explore. Relax. Enjoy! Do it all in the best possible way – with the people you love.



Golden Cherry Finish Cabinets and the coordinated Blue Dimension decor fabrics combine for a stylish atmosphere in this 259RK Fifth Wheel.



Enjoy a roomy shower or bath in the 249QB.



Residential quality drawer glides and sturdy Techwood® drawers provide reliable performance.



LITES feature floorplans which utilize available storage space to the fullest.



Another Coachmen innovation is the functional and handy under-sink silverware and utensil drawer.

Outstanding Service and Warranty

For over 35 years Coachmen RV has been leading the RV Industry in product design, dependability and customer service support. We work very hard to have our products exceed your expectations. Equally important is the service that we provide during your ownership experience. Whether it be information about your unit, reliable warranties, or industry leading service support... Coachmen RV ranks second to no one.



(Optional owner's information packet)

Buckstopper Warranty

Your Owner's registration card and our famous Buckstopper Limited Warranty are your passport to worry free travel. Our nationwide network of approximately 300 authorized Coachmen Service Centers stand ready to provide you with courteous, dependable and timely service.

Two Year Structural & Major Components Manufacturer's Warranty

In addition to your One Year Buckstopper Limited Warranty, you can travel with confidence knowing that select major structural components such as walls, ceilings, and floors are covered for two years by Coachmen's extended Structural Limited Warranty. Coachmen product also comes with a limited Two Year Major Component Manufacturer's Warranty on select components. Please refer to our Product Warranty Summary Guide for complete details.

Service Assistance

Coachmen's Service & Parts Department is staffed with trained professionals who are committed to satisfying your needs. Coachmen provides a toll free service number for your assistance and convenience. And for those rare instances that a replacement part is required for your coach, Coachmen RV provides a Priority Customer Parts Order program for overnight part shipments in critical repair situations.



Coachmen RV features a complete parts and service center at the Middlebury, Indiana complex. Relax during your visit in our comfortable parts and service lounge.

Service Support Center Web Site

Presented as an option under the Coachmen RV Company web site (coachmenrv.com), this informative site offers:

- A Service Dealer Locator System
- Maintenance Information
- Troubleshooting Information
- Product Warranty Summary Information
- Customer "E-Assistance" Access ...and more

Visit our site and see for yourself that Coachmen RV is committed to taking care of our customers.

Ultimate Satisfaction – First

Coachmen RV owners regularly receive comprehensive surveys through our Ultimate Satisfaction – First (US1 Program). US1 questionnaires provide us with valuable information regarding our customers' products as well as the purchase and ownership experience. Listening to our customers helps us achieve your... "Ultimate Satisfaction – First".



2001 CATALINA LITE TRAVEL TRAILERS & FIFTH WHEELS

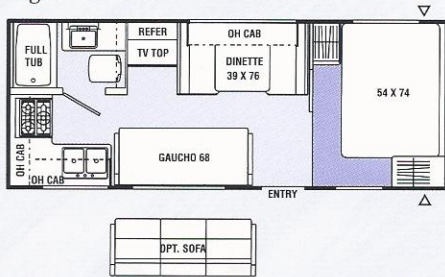
FLOORPLANS AND SPECIFICATIONS



Travel Trailer Floorplans

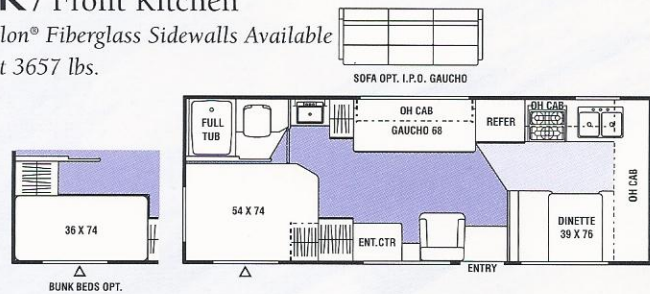
221rk / Rear Kitchen

Optional Filon® Fiberglass Sidewalls Available
Base Weight 3486 lbs.



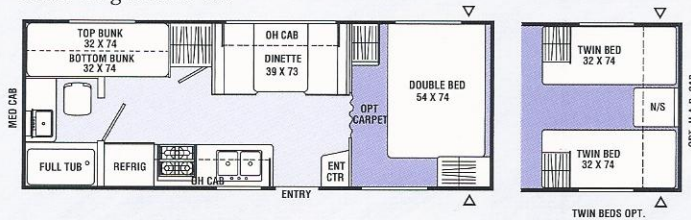
241fk / Front Kitchen

Optional Filon® Fiberglass Sidewalls Available
Base Weight 3657 lbs.



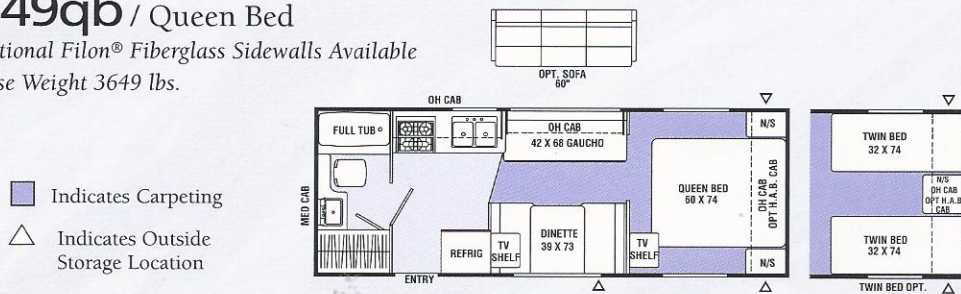
248tb / Two Bedroom

Optional Filon® Fiberglass Sidewalls Available
Base Weight 3639 lbs.



249qb / Queen Bed

Optional Filon® Fiberglass Sidewalls Available
Base Weight 3649 lbs.



- Indicates Carpeting
- Indicates Outside Storage Location

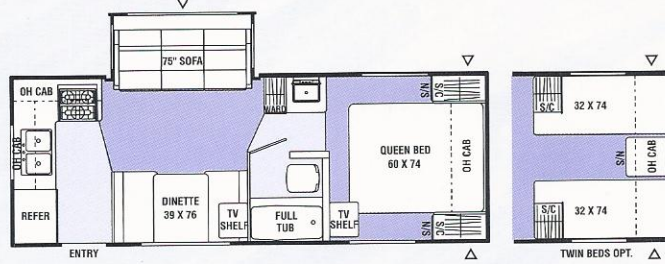
“Leader to the Great Outdoors”

252rks / Rear Kitchen / Slide Out

Optional Filon® Fiberglass Sidewalls Available

Base Weight 4702 lbs.

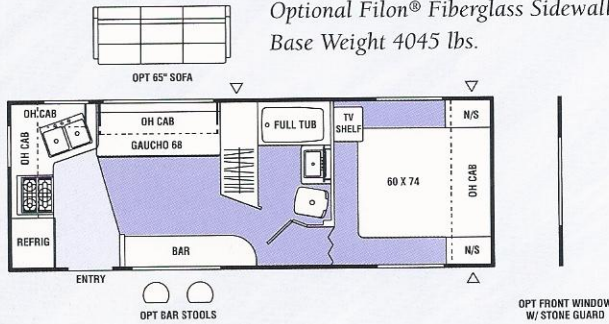
- Indicates Carpeting
- △ Indicates Outside Storage Location



253rk / Rear Kitchen

Optional Filon® Fiberglass Sidewalls Available

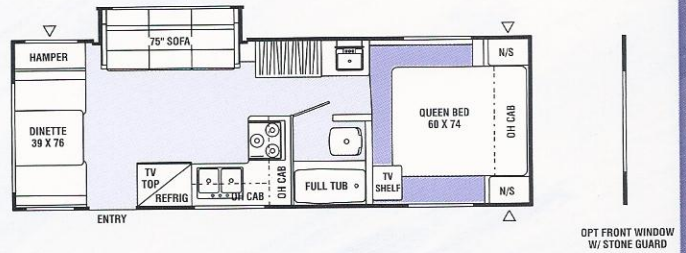
Base Weight 4045 lbs.



267rds / Rear Dinette / Slide Out

Optional Filon® Fiberglass Sidewalls Available

Base Weight 4826 lbs.



Travel Trailer Specifications

	221RK	241FK	248TB	249QB	252RKS	253RK	267RDS
Base Weight	3,541	3,691	3,768	3,639	4,702	4,045†	4,826†
GVWR	4,850	6,110	5,880	5,850	7,580	6,180†	7,550†
Carrying Capacity	1,309	2,419	2,112	2,211	2,878	2,135†	2,724†
Hitch Weight	450	670	440	410	580	580†	550†
Axle Weight	3,091	3,021	3,328	3,229	4,122	4,150†	4,376†
Interior Height	76"	76"	76"	76"	76"	76"	76"
Exterior Height*	8'8"	8'8"	8'8"	8'8"	9'8"	9'8"	9'8"
Exterior Length	23'5"	25'2"	25'2"	25'3"	25'5"	26'3"	26'4"
Exterior Width	7'10"	7'10"	7'10"	7'10"	7'10"	7'10"	7'10"
Hitch Pin Height	16"	17"	17"	17"	21"	21"	21"
Sleeping Capacity	6	6	6/7	6/7	6	4	6
Fresh Water Capacity (gal.)	32	32	27	32	39	36	27
Waste Water Capacity (gal.)	32	34	33	33	33	32	32
Grey Water Capacity (gal.)	33	32	32	32	65	32	33
Water Heater Capacity	6	6	6	6	6	6	6
LP Gas Capacity (lb.)	40/60	40/60	40/60	40/60	40/60	40/60	40/60
Furnace Rating (x1,000) BTU	20	25	25	25	25	25	25
Tire Size	ST175/80R13B	ST175/80R13C	ST175/80R13C	ST175/80R13C	ST205/75R15C	ST175/80R13C	ST205/75R15C

*Add 10" for Roof Air Conditioner † Estimated at time of printing

Base Weight: The weight of the unit with no fluids, cargo, optional equipment or accessories.

GVWR (Gross Vehicle Weight Rating): The maximum permissible weight of the unit, including the Base Weight plus all fluids, cargo, optional equipment and accessories. For safety and product performance, do not exceed the GVWR.

Carrying Capacity: The difference between the Base Weight and the GVWR. This is the amount of weight available for all fluids, cargo, optional equipment and accessories. The actual "loaded" weight will depend on the equipped unit and the owner's individual choice of cargo, etc.

Wider Widths: Numerous Coachmen floorplans feature the "wide body" design concept, which gives you significantly enhanced interior living space and innovative floorplans.

In making your purchase decision, you should be aware that a few states restrict access on some

or all roads within the state to vehicles with a maximum 96" width, although special road usage permits may be available. Vehicles up to 102" in width are permitted in the vast majority of states. You should confirm the road usage laws in the states of interest to you before making your purchase decision. If width is of concern to you, we invite you to consider the broad array of other Coachmen models offered in the standard 96" width.

All information contained in this brochure is believed to be accurate at the time of publication. However, during the model year, it may be necessary to make revisions and Coachmen reserves the right to make all such changes without notice, including changes in prices, colors, materials, equipment and specifications, as well as the addition of new models and the discontinuance of models shown in this brochure. Therefore, please consult with your Coachmen dealer and confirm the existence of any materials, design or specifications that are material to your purchase decision.

Travel Trailer Standard Features

INTERIOR AND DECOR

Golden Cherry Finish Cabinets
 Linoleum Flooring
 Mini Blinds – Coach
 Mini Blinds – Bedroom (Except w/Bunks)
 Radius Windows
 Gaucho (221RK, 241FK, 249QB, 253RK)
 Dinette
 TV Antenna Ready
 LP Leak Alarm
 Sofa (252RKS, 267RDS)

GALLEY

Microwave Ready
 3-Burner Hi Output Range Top w/Pots & Pans Drawer
 Power Range Hood
 Large, Flush Mount, Single Door Refrigerator
 Monitor Panel
 Stainless Steel Sink
 Silverware Drawer (Except 221RK)

SLEEPING

Queen Bed (249QB, 252RKS, 253RK, 267RDS)
 Corner Double Bed (221RK, 241FK, 248TB)
 Bunk Beds (248TB)
 Deluxe Innerspring Mattress – 312 Coil
 Pillow Shams
 Bedspread

ELECTRICAL/HEATING/ AIR CONDITIONING

GFI Circuit
 Outside Receptacle GFI
 Patio Light
 LP Light
 Double 20 LB LP Bottles w/Auto Change-Over
 20,000 BTU E.I. Furnace (221RK)
 25,000 BTU E.I. Furnace (Except 221RK)
 Roof Air Conditioning (13,500 BTU)

BATH AND WATER

Marine Toilet
 Power Bath Vent
 6-Gallon Water Heater
 Water Heater By-Pass Valve
 Demand Water Pump
 Decorative Bath Hardware
 Medicine Cabinet

EXTERIOR/CONSTRUCTION

Clear Safety Glass Radius Windows
 White Framed Windows
 Electric Slideroom (252RKS)
 Pass Through Storage (Except 241FK)
 One Piece Seamless Aluminum Roof
 Fiberglass Insulation
 Gutter Rail with Awning Rail
 Single Entry Step
 Dead Bolt Lock
 Radial Tires
 Rally Wheels
 Fender Skirts
 One Piece Polyethylene Wheel Wells
 Break Away Switch
 Awning

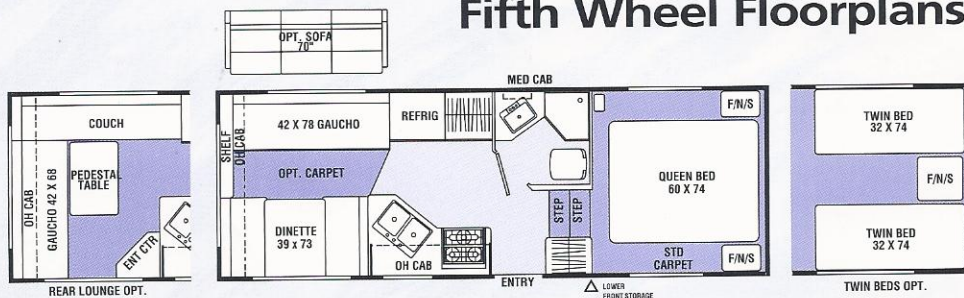


Travel Trailer Optional Features

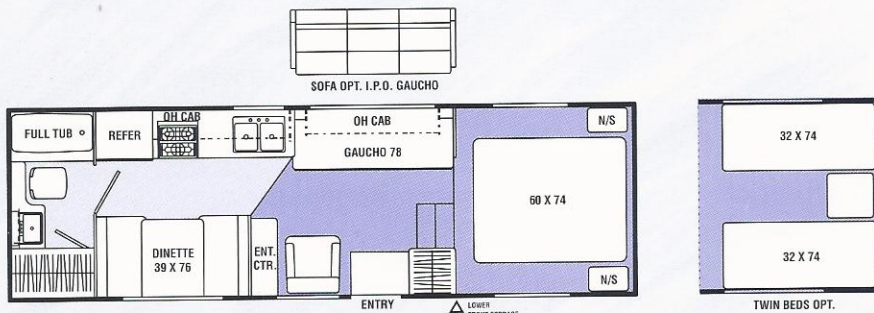
- Partial Carpet With Pad (Carpet is standard in the Living Room of the 252RKS)
- Twin Beds (248TB, 249QB, 252RKS)
- Twin Beds with HAB (248TB)
- Bunk Beds (241FK)
- Front Hide-A-Bed (248TB, 249QB, 253RK, 267RDS) (Front Hide-A-Bed w/Twin Beds Option on 248TB)
- Jack Knife Sofa (221RK, 241FK, 249QB, 253RK)
- Swivel Rocker (241FK)
- AM/FM CD Stereo
- TV Antenna with Rotor Package
- Cable TV Jack
- Flush Mount, Double Door Refrigerator (Except 221RK)
- 3-Burner (High Output) Range w/Oven
- Microwave Oven
- 6-Gallon E.I. Water Heater
- One-Piece ABS Tub Surround
- Outside Shower
- Front Window w/Stone Guard Awning
- Tinted Safety Glass – Radius Windows
- Double 30# LP Bottles with Auto C/O
- LP Bottle Cover
- Spare Tire Kit – 13" (Except 252RKS) (Not Available w/Straight Axle Option)
- Spare Tire Kit – 15" (Available Only w/Straight Axle Option and 252RKS)
- Retractable Stabilizer Jacks (Std. On 252RKS, 267RDS)
- Straight Axle w/15" Rdl. Tires & Dbl. Step (Std. on 252RKS)
- Rubber Roof
- CSA Upfit (Mandatory for all Canadian Provinces)
- Filon® Fiberglass Sidewalls
- Skylight
- Two Bar Stools (253RK)



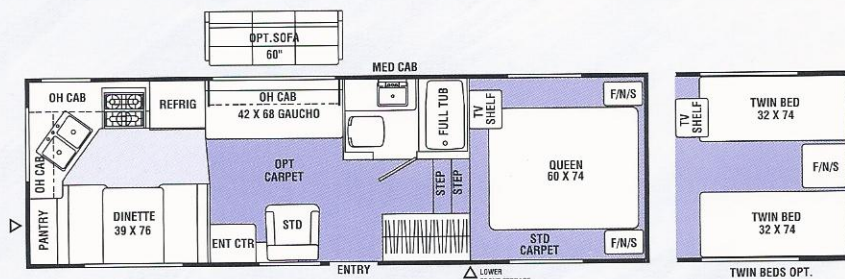
Fifth Wheel Floorplans



220rl / Rear Lounge
 Optional Filon® Fiberglass
 Sidewalls Available
 Base Weight 3929 lbs.



250rb / Rear Bath
 Optional Filon® Fiberglass
 Sidewalls Available
 Base Weight 4276 lbs.



259rk / Rear Kitchen
 Optional Filon® Fiberglass
 Sidewalls Available
 Base Weight 4356 lbs.

■ Indicates Carpeting

△ Indicates Outside Storage Location

Fifth Wheel Specifications

	220RL	250RB	259RK
Base Weight	3,929	4,276	4,356
GVWR	6,390	6,440	6,550
Carrying Capacity	2,461	2,164	2,144
Hitch Weight	790	840	900
Axle Weight	3,139	3,436	3,456
Interior Height	76"	76"	76"
Exterior Height*	9'1"	9'1"	9'1"
Exterior Length	23'10"	26'7"	26'11"
Exterior Width	7'10"	7'10"	7'10"
Hitch Pin Height	43"	43"	43"
Sleeping Capacity	6/5	6	6
Fresh Water Capacity (gal.)	27	39	32
Waste Water Capacity (gal.)	34	33	34
Grey Water Capacity (gal.)	32	32	34
Water Heater Capacity	6	6	6
LP Gas Capacity (lb.)	40	40/60	40/60
Furnace Rating (x1,000) BTU	25	25	25
Tire Size	ST305/75R15B	ST205/75R15B	ST205/75R15B

*Add 10" for Roof Air Conditioner

Base Weight: The weight of the unit with no fluids, cargo, optional equipment or accessories.

GVWR (Gross Vehicle Weight Rating): The maximum permissible weight of the unit, including the Base Weight plus all fluids, cargo, optional equipment and accessories. For safety and product performance, do not exceed the GVWR.

Carrying Capacity: The difference between the Base Weight and the GVWR. This is the amount of weight available for all fluids, cargo, optional equipment and accessories. The actual "loaded" weight will depend on the equipped unit and the owner's individual choice of cargo, etc.

Wider Widths: Numerous Coachmen floorplans feature the "wide body" design concept, which gives you significantly enhanced interior living space and innovative floorplans.

In making your purchase decision, you should be aware that a few states restrict access on some or all roads within the state to vehicles with a maximum 96" width, although special road usage permits may be available. Vehicles up to 102" in width are permitted in the vast majority of states. You should confirm the road usage laws in the states of interest to you before making your purchase decision. If width is of concern to you, we invite you to consider the broad array of other Coachmen models offered in the standard 96" width.

All information contained in this brochure is believed to be accurate at the time of publication. However, during the model year, it may be necessary to make revisions and Coachmen reserves the right to make all such changes without notice, including changes in prices, colors, materials, equipment and specifications, as well as the addition of new models and the discontinuance of models shown in this brochure. Therefore, please consult with your Coachmen dealer and confirm the existence of any materials, design or specifications that are material to your purchase decision.

Fifth Wheel Standard Features

INTERIOR AND DECOR

Golden Cherry Finish Cabinets
 Carpet – Bedroom
 Linoleum Flooring – Kitchen & Living
 Mini Blinds – Coach
 Mini Blinds – Bedroom
 Radius Corner Windows
 Swivel Rocker (250RB, 259RK)
 Side Dinette
 TV Antenna Ready
 LP Leak Alarm

GALLEY

Microwave Ready
 3-Burner Hi Output Range Top w/Pots & Pans Drawer
 Power/Lighted Range Hood
 Large, Flush Mount, Single Door Refrigerator
 Monitor Panel
 Stainless Steel Sink
 Silverware Drawer (250RB, 259RK)

SLEEPING

Queen Bed
 Deluxe Innerspring Mattress – 312 Coil
 Pillow Shams
 Bedspread

ELECTRICAL/HEATING/AIR CONDITIONING

GFI Circuit
 Outside Receptacle
 Patio Light
 Hitch Light
 Double 20 LB LP Bottles w/Auto Change-Over
 25,000 BTU E.I. Furnace
 Roof Air Conditioning (13,500 BTU)

BATH AND WATER

Marine Toilet
 Power Bath Vent
 6-Gallon Water Heater
 Water Heater By-Pass Valve
 Demand Water Pump
 Decorative Bath Hardware
 Medicine Cabinet

EXTERIOR/CONSTRUCTION

Clear Safety Glass Radius Windows
 White Framed Windows
 One-Piece Seamless Aluminum Roof
 Fiberglass Insulation
 Gutter Rail with Awning Channel
 Dead Bolt Lock
 Straight Axle
 15" Radial Tires
 Rally Wheels
 Fender Skirts
 One-Piece Polyethylene Wheel Wells
 Break Away Switch
 Awning

Fifth Wheel Optional Features

- Partial Carpet With Pad – Coach
- Twin Beds
- Rear Lounge (220RL) (Except on Jack Knife Sofa Option)
- Jack Knife Sofa – Off Door Side
- Residential AM/FM C.D. Stereo
- TV Antenna with Rotor Package
- Cable TV Jack
- Flush Mount, Double Door Refrigerator
- 3-Burner (High Output) Range w/Oven
- Microwave Oven
- 6-Gallon E.I. Water Heater
- One-Piece ABS Tub Surround
- Outside Shower
- Tinted Safety Glass – Radius Windows
- Double 30# LP Bottles w/Auto C/O (250RB, 259RK)
- Spare Tire Kit
- Retractable Stabilizer Jacks
- Rubber Roof
- CSA Upfit (Mandatory for all Canadian Provinces)
- Filon® Fiberglass Sidewalls
- Skylight

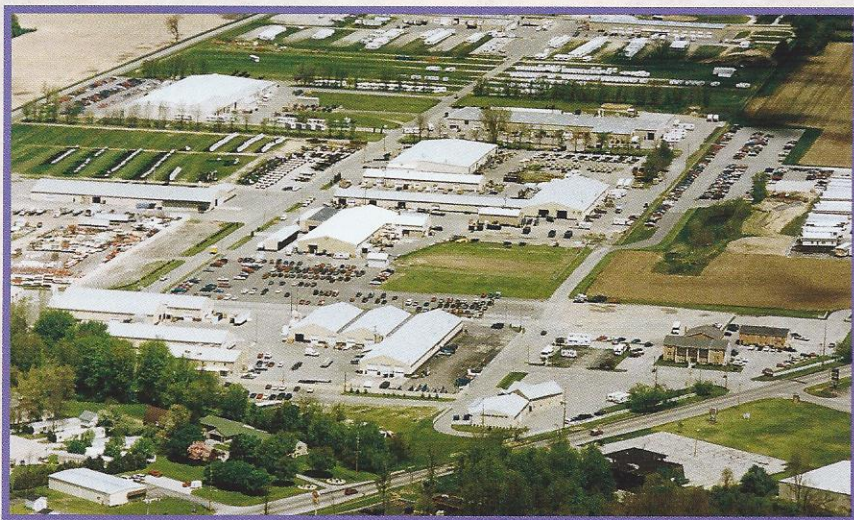


A Proud History of Quality & Value

Coachmen RV Company has a long and proud history of quality product with unparalleled value and true commitment to the thousands of RV enthusiasts that have chosen Coachmen as their RV of choice.

Coachmen RV Company is a proven leader in the RV Industry with over 35 years of experience. Our mission is to make your total RV ownership experience the best possible by offering you the highest quality and reliability on the market today. Whether you look at our full breadth of product and model offerings, our Industry first Buckstopper Warranty, our customer driven service assistance, our Coachmen Caravan camping club, or our proven track record... Coachmen RV Company is understandably the "Leader to the Great Outdoors".

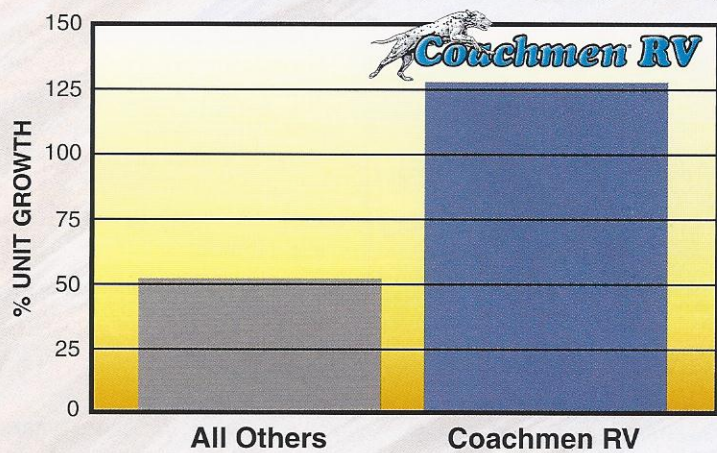
In 1964 Coachmen Industries was founded by three brothers, Tom, Keith and Claude Corson with a dream and a vision of dedication to the enrichment of your life through enjoyment of the RV lifestyle.



Come visit us at our Complex in Middlebury, Indiana (above) where you can relax at our Visitor's Center and enjoy guided tours of the assembly plants. Also visit us at our facilities in Fitzgerald, Georgia, Goshen, Indiana and Grants Pass, Oregon.

Incredible Sales Growth Continues

Coachmen RV cumulative growth for the past seven years (1993-1999)



Source: Statistical Surveys (December 1999 YTD)

They built Coachmen on principles such as:

- Practice the Golden Rule
- Our Word is Our Bond
- Business goes where it is invited and stays where it is well cared for

Through these principles, Coachmen has flourished over the years and become the leader throughout the RV Industry.

We've learned what makes an RV reliable, practical, and enjoyable, as well as how to enhance the RV lifestyle once you have chosen a Coachmen RV. We have accomplished this by listening to our customers. Our product's design, features, and amenities are driven by our customers. We listen because we care! And because we listen, our products, our services, and our programs are the best in the Industry. Coachmen products are designed with your needs in mind!

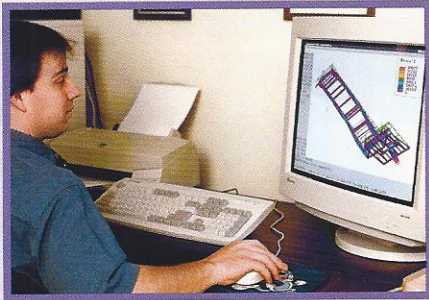
Come and enjoy the RV lifestyle. Create memories of a lifetime with your family and friends. Take a closer look at the...

"Leader to the Great Outdoors"
- Coachmen RV Company.

Up-Front Design for Long Term Comfort

Founded in 1964, Coachmen is one of the oldest, continuous producing manufacturers of recreational vehicles. A secret of our success is our commitment to the continuous improvement of our products.

We have learned that quality must be designed and built into the products, up front. Combining experience and technology, we are able to prevent many problems before they arise, through proper analysis and testing.



Design & Analysis

Unlike most companies, Coachmen uses computerized technology for much more than simple drafting applications.

At Coachmen RV, we utilize and rely on advanced computer technology to design and engineer a reliable and safe vehicle for you and your family. Finite Element Analysis helps evaluate structural integrity of components and systems quickly and efficiently. 3D model simulations and numerous other process and software systems are also used in the design and development of Coachmen recreational vehicles.

Computer weight testing is per-

formed on new models. Before a floorplan is approved, we know the approximate weights, including dry and loaded, front and rear axle weights and even side-to-side weights which affect towing. After a model is built, the computer analysis is manually verified.



Performance Testing

Coachmen does not want, nor expect, our customers to be the "proving ground." We believe it is our job to adequately test our products, before they reach our customers.

Coachmen subjects its new models to a myriad of stringent tests, before introduction to the customer. Rigorous road tests, up to 15,000 simulated miles, are performed on actual production units, to verify computer

modeling. Studies are made of structural integrity, stress analysis, cabinetry durability, weight loading, vibration analysis and handling.

There can be little doubt that Coachmen has superior quality – by design.

Accurate & Specific Weights

Every Coachmen model has a weight label to provide you with specific and accurate weights and ratings of your unit. These comprehensive weight information labels are posted in your vehicle providing you with critical information such as the unit's Gross Vehicle Weight rating and Carrying Capacity.



Leak Prevention

Every unit we produce is tested for leaks in a high-pressure rain chamber, designed to simulate a driving rain, not just a spring shower.

Every corner – at the roof, floor and sidewall is wrapped, sealed and secured. All roof and sidewall openings receive framing reinforcement, and are sealed with a non-shrinking, pliable silicone.

To promote water drainage and leak protection, all roofs have tapered rafters.

Coachmen goes the extra mile to ensure a quality hassle free RV.



A beautiful Filon® fiberglass sidewall option is available on LITE floorplans.

International Coachmen Caravan Offers Friends and Fun for Life

With your purchase of a Coachmen RV you are invited to join the nation's largest manufacturer sponsored RV club at a discounted rate...International Coachmen Caravan.

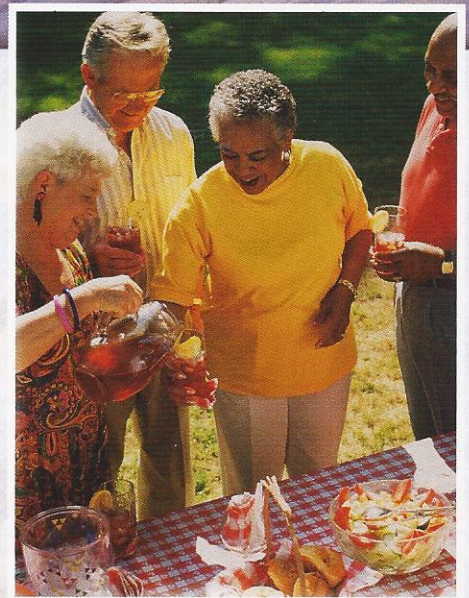
Consisting of over 23,000 member families, the Coachmen Caravan was established in 1966 to help our owners enjoy RV ownership to its fullest.

With the Coachmen Caravan there are unlimited opportunities for you and your family to form lifelong friendships; improve and share your unique talents, skills and crafts; be active in running your club; and exchange ideas, information and

helpful hints – all these, plus the many benefits outlined below, are uniquely yours through the International Coachmen Caravan.

Incredible Membership Benefits. Your Caravan membership brings you a multitude of benefits that will help to ensure your safety and enjoyment throughout your RV experiences:

- Free \$5,000 Accidental Death and Dismemberment Insurance policy
- Emergency road service and RV insurance available at special low rates
- Free trip-planning service
- 10% Discounts at over 4,000 campgrounds in the U.S. and Canada
- Free annual Campground Directory
- Hassle-free group travel to popular destinations
- Organized campouts, meeting and parties
- Free subscription to Coachmen Capers, the club's quarterly magazine
- Annual International Rally Week
- A Coachmen Caravan MasterCard
- Free I.D. card, caravan key ring, vehicle decals and I.D. numbers
- Discounts on club clothing, accessories, film developing and selected RV publications



Coachmen RV Invites Public to Tour Facilities

The Coachmen Visitor's Center in Middlebury, Indiana is your starting point for weekday tours of our motorhome, travel trailer and fifth wheel manufacturing plants. Also located at the Visitor's Center is the headquarters of the International Coachmen Caravan Owners Club and the Coachmen RV store, "Pete's Market", loaded with a large selection of Coachmen RV clothes and merchandise. Please call ahead for tour information and times. The Coachmen RV plants in Fitzgerald, Georgia, Goshen, Indiana and Grants Pass, Oregon produce travel trailers and fifth wheels only. Motorhome production tours are available only at the Middlebury location.



Decor Selections

Blue Dimension



Southwest Sage



Prairie Sand



Dazzling interiors feature skillfully coordinated upholstery and window treatments. Coachmen RV chooses only top-grade fabrics wear-dated as heavy-duty. These fabrics have been tested for durability beyond 15,000 double rubs (in and out action) to simulate heavy usage. An average chair in an American home is subjected to only 3,000 double rubs per year.

Coachmen RV Forms Alliance with Disney

Coachmen RV Company and WALT DISNEY WORLD® Resort, respective leaders in the recreational vehicle (RV) and entertainment/family vacation industries, have formed an alliance that will allow the companies to work together into the new millennium. Coachmen is now the Official RV of Disney's Fort Wilderness Resort and Campground and Disney's Wide World of Sports™ Complex in Florida.

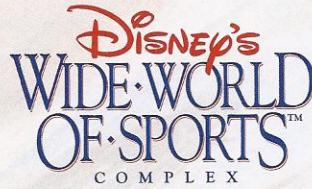
As part of this new alliance, Coachmen RV's will be prominently displayed at Disney's 750-acre campground resort. Disney's Fort Wilderness Resort and Campground, affectionately known as the "most magical campground in the World", boasts nearly 800 campsites, 700 of which are full hook-up sites for RVs. It also features over 400 deluxe Wilderness Cabins as well as various recreational and entertainment

facilities. This elite resort is one of the three original vacation resorts opened when WALT DISNEY WORLD® Resort premiered in 1971. A Coachmen RV will be displayed

near Pioneer Hall, home of the popular Hoop-Dee-Do Musical Revue, the longest running dinner show at WALT DISNEY WORLD® Resort.

Coachmen RV's will also be a part of the Disney magic at Disney's Wide World of Sports™ Complex. Spanning 200 acres, this ultra modern facility, features a 10,000 seat baseball stadium which is also the spring training home

of the Atlanta Braves. The complex, designed for athletes and fans alike, includes numerous state-of-the-art playing fields and venues serving a wide variety of sports. Disney's Wide World of Sports™ is truly the "ultimate sports destination".



Photographed at: Disney's Fort Wilderness Resort and Campground



Photo Courtesy of Disney's Wide World of Sports™ Complex

A Company You Can Trust Since 1964

It all began in 1964. A small company started on its way to becoming one of the most recognized names in the Recreational Vehicle Industry. Right away Coachmen started earning the reputation as a leader.

From the beginning it was obvious that Coachmen is a company that cares about the products it produces and the people who enjoy them, always looking for better ways to bring the pure enjoyment of the RV Lifestyle to more and more families.

In the nearly four decades since Coachmen's modest

beginnings, countless companies have come and gone. But Coachmen has stayed the course. From product development to service after the sale, Coachmen has helped set the standards for others to follow. Many of today's product designs, manufacturing techniques and product warranties are a result of Coachmen innovations.

Coachmen - Celebrating over 35 Years as
"Leader to the Great Outdoors."



Visit our website at: www.coachmenrv.com

COACHMEN RECREATIONAL VEHICLE COMPANY
P.O. Box 30, Middlebury, IN 46540 • P.O. Box 948, Fitzgerald, GA 31750

JERRY'S TRAILERS & CAMPERS

2601 S. 13th St.
Norfolk, NE 68701
(402) 371-1306



© Copyright 2000 Coachmen Recreational Vehicle Company Litho in U.S.A. 6/00