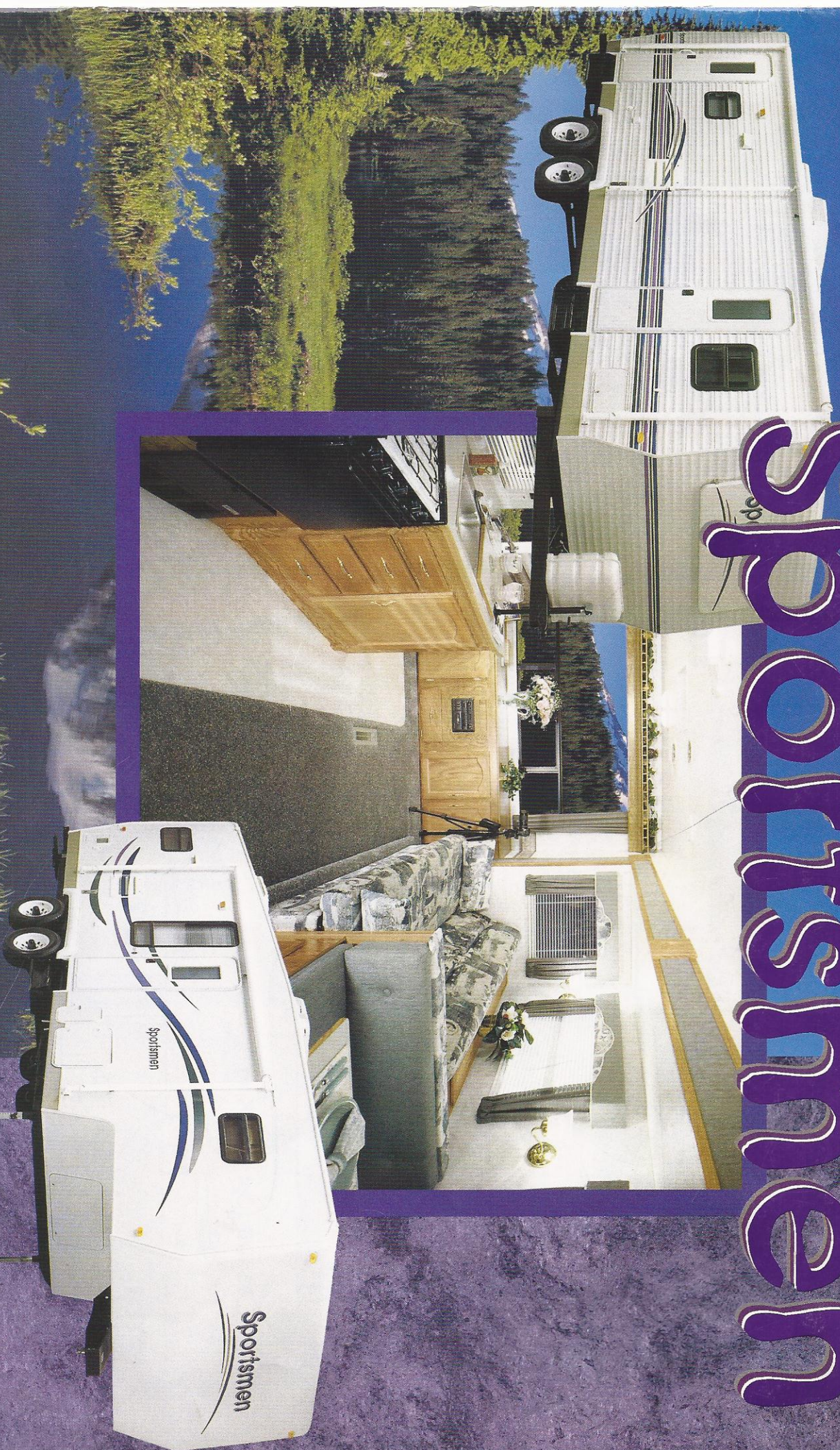


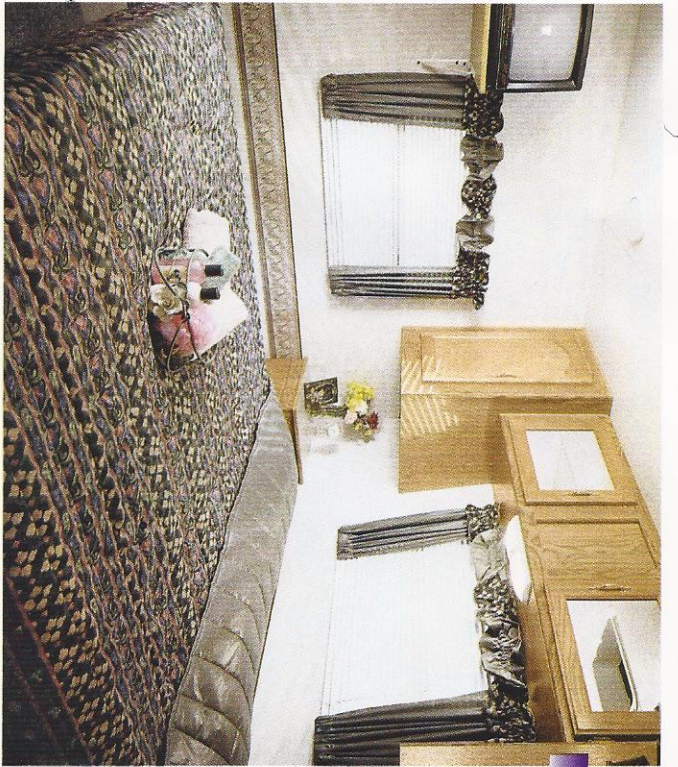
K-Z, Inc.

# Sportsmen

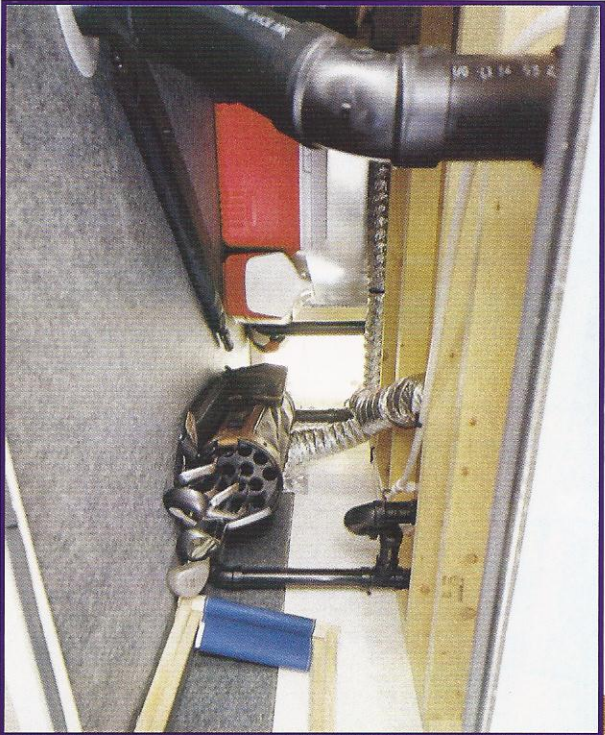


Building Quality and Fun for over 28 years

2000



Shamrock Interior - Model 2604P



Large Storage Compartments  
"You Can Bring It All!"



Spacious Kitchens "Just Like Home"



Lilac



Shamrock



Sky



Sparrow

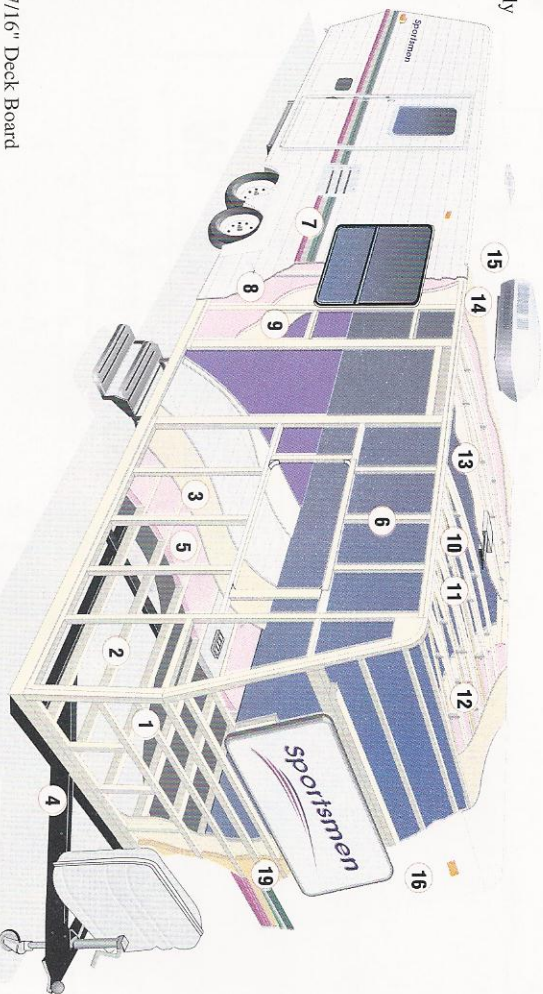
## Travel Trailer & Fifth Wheel Standard Features

- Radius Compression Windows
- Solid Oak Drawer Fronts
- Cabinet Doors: Solid Oak, Mortise & Tendon Jointed Frames
- Radial Tires
- Cable Hook Up
- 1 Sink Cover
- One Piece Royal™ Tuff-Ply™ Roof
- Gas Props on Bed Base\*
- Large Stainless Steel Sink\*
- Deluxe Fabrics
- Oven - W/ Black Porcelain Front (Large 22") with 3 Burner High Output Range & Piezo Ignitor
- Steel Framed Sofas
- Storage Doors on end of Dinette Bases\*
- Chair (where indicated on floor plan)
- Water Heater By-Pass Kit
- Single Piece Tub Wall Surround
- Wall Border (living room & bedroom)
- Power Range Hood w/ Light
- Mini Blinds (all windows)
- Stereo
- TV Antenna w/ Booster & 2 Jacks\*
- One Double Step at Main Entrance on all Fifth Wheels\* and Travel Trailers (24' & larger)\*
- One Triple Step at Main Entrance on all Power Slide Outs\*
- 6 Gallon DSI Water Heater
- 30# LP Bottles
- Light Switch at Entrance Door
- Light Switch for Bathroom
- Tub Faucet on all Floor Plans
- Double Door Refrigerator
- 13,500 BTU Air Conditioner
- Ducted Air (2600 Series & larger Travel Trailers and 2550 Series & larger Fifth Wheels)
- Awning (Recommended Size)
- Microwave
- Monitor Panel
- Gas Bottle Cover (on Travel Trailers)

\* Where applicable and codes allow.  
 Note: Some Standard Features may be cancelled or altered at dealer's request. Features available on early 1999 models may vary.

## Picture These Standard Construction Features

1. Puncture, tear & weather resistant underbelly
2. 2x3 Floor Joist 16" O.C.
3. 5/8" Tong & Groove Plywood
4. Heavy Gauge Box Tubular Steel Frame
5. Fiberglass Insulation R7 (Floor)
6. 2x2 Studs 16" O.C.
7. .024 MESA Metal
8. Fiberglass Insulation R7 (Sidewalls)
9. LUAN Paneling
10. 2x3 Tapered Rrafters 16" O.C. (20'-25' TT & 20'-22' FW)
11. 5" Truss Rrafters 16" O.C. (26'-40' TT & 25'-35' FW)
12. Fiberglass Insulation R7 (Roof)
13. LUAN Ceiling Board



14. 7/16" Deck Board
15. Royal™ Tuff-Ply™ One Piece Roof
16. Optional Smooth Fiberglass (Limited Edition Models)

## Optional Equipment -

(Available on Travel Trailers & Fifth Wheels)

- Exterior Shower
- Stabilizer Jacks
- Water Filter
- Stove Cover
- Spare Tire Kit
- Deluxe Package I or II
- Gas/Electric DSI 6 Gal. Water Heater
- STEREO/CD Player
- Limited Edition Model (Fiberglass Exterior w/ End Caps)
- Sundeck and Ladder

### Limited Vehicle Warranty: K-Z, Inc.

warrants that it will repair or replace any part of your Fifth Wheel Model found to be defective in materials or workmanship within 12 months from date of original purchase.

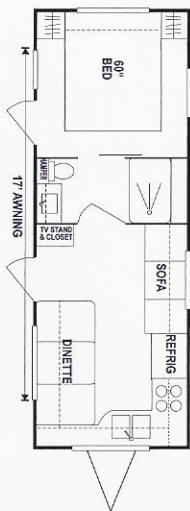
Components such as tires, plumbing and electrical features, refrigerator, range etc. are subject to separate warranties issued by other manufacturers. Ask your dealer for details.

### Two Year Structural Warranty:

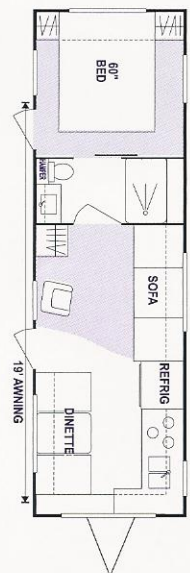
The limited two-year guarantee warrants a guarantee against all defects in materials or faulty workmanship for the steel frame and wood structure for 24 months from date of original purchase. Guarantee applies to original owner only and is available upon request for inspection. NOTE: Check with your dealer for 2-Year warranty availability on select components.

### The following components include a 2-Year Limited Warranty:

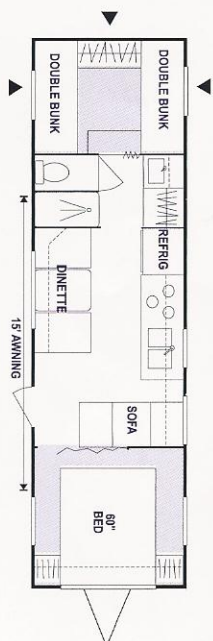
- Refrigerator • Furnace • Water Heater • Oven • Microwave • Toilet • Water Pump



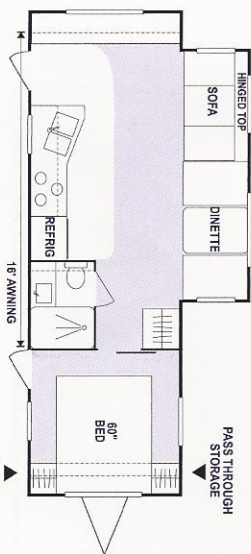
**2503**



**2803**



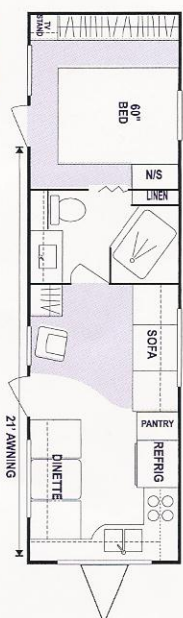
**3004SS** - 70 cubic ft. of external storage!



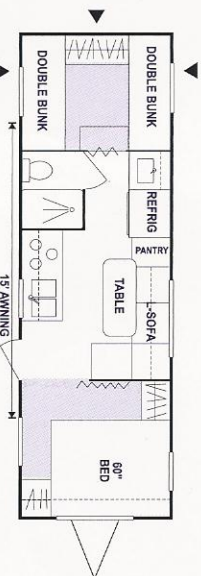
**2604P** (Opt. 4, 5)



**2803P** (Opt. 4, 5)



**3006**



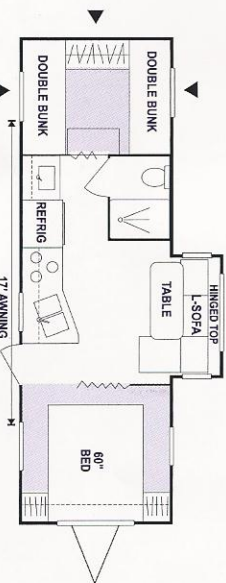
**2704 SS** - 70 cubic ft. of external storage!



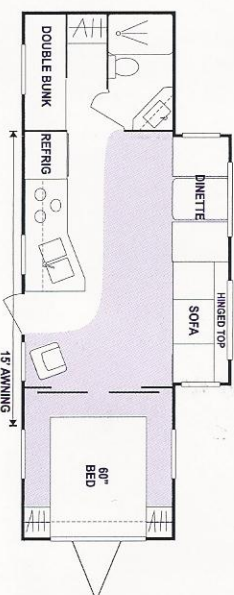
**3003**



**3006P** (Opt. 4, 5, King Bed Slide)



**2704P SS** - 70 cubic ft. of external storage!



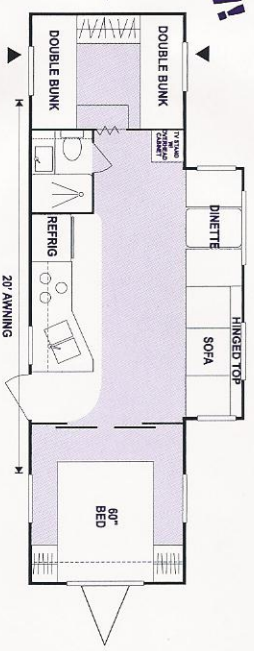
**3003P** (Opt. 4, 5)



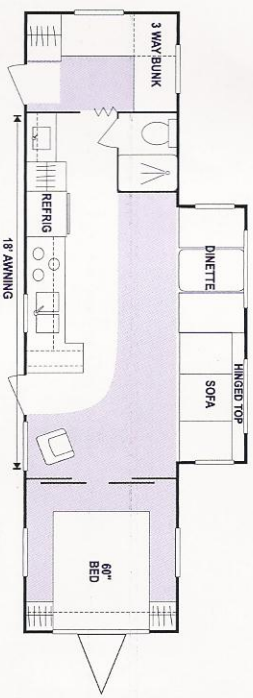
**3101P** (Opt. 4, 5)



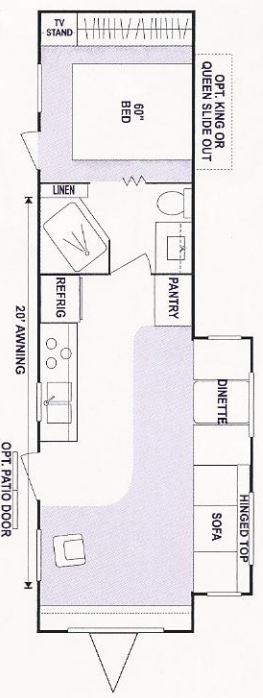
**NEW!**



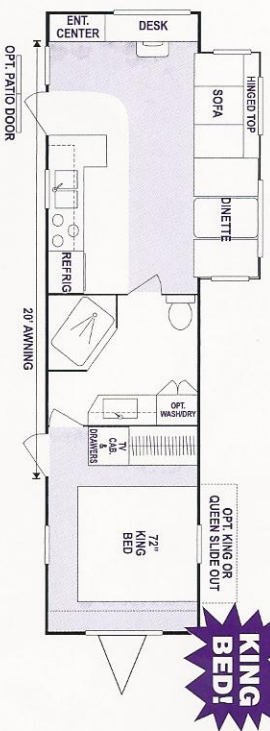
**3204PSS** (Opt. 4, 5) - 70 cubic ft. of external storage!



**3501P** (Opt. 4, 5, 8)

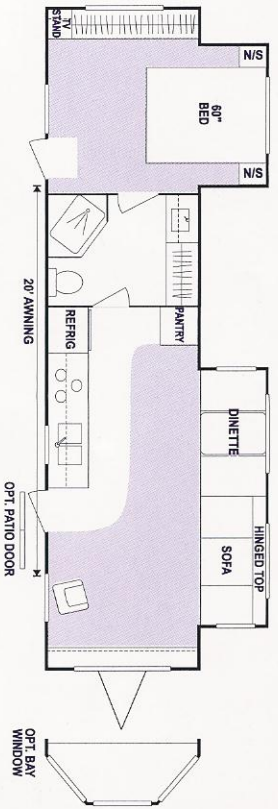


**3510P** (Opt. 4, 5, King Bed Slide)

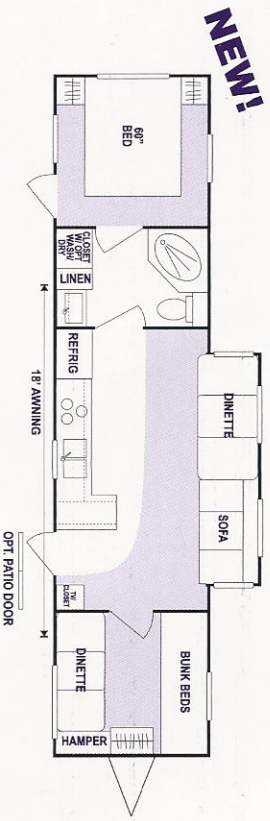


**3513P** (Opt. 4, 5)

**KING BED!**



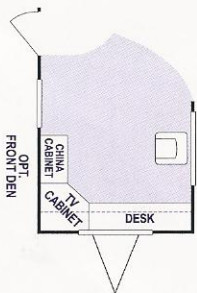
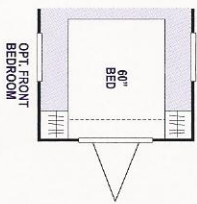
**3705Px2** (Opt. 4, 5, King Bed Slide)



**3803P**

**NEW!**

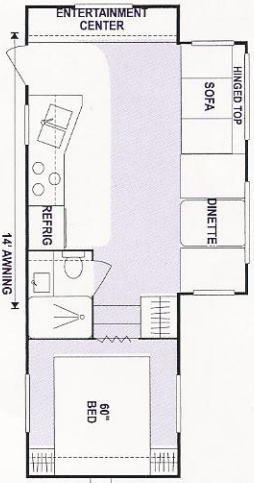
Customize your 3803P with one of these special options:



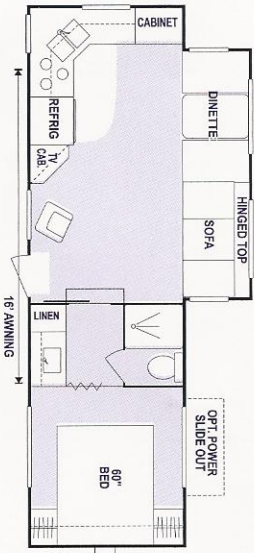
**TRAVEL TRAILERS**

**Sportsmen 2000**

# FIFTH WHEELS



**2456P** (Opt. 4, 5) LP



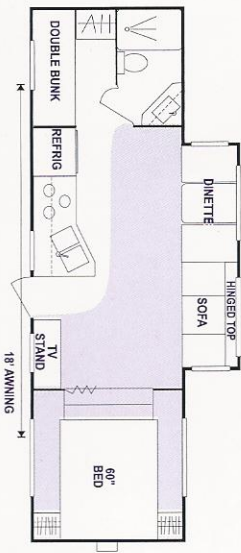
**2851P** (Opt. 4, 5, 6) SU/MP



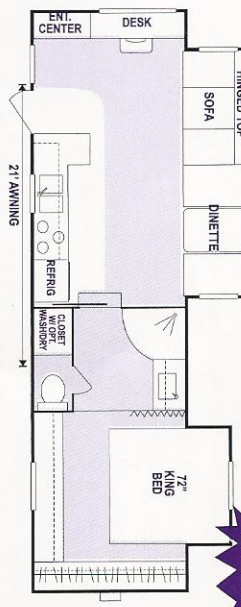
**3051Px2** (Opt. 4, 5, 6) SU



**2552P** (Opt. 4, 5, 6) SU/MP

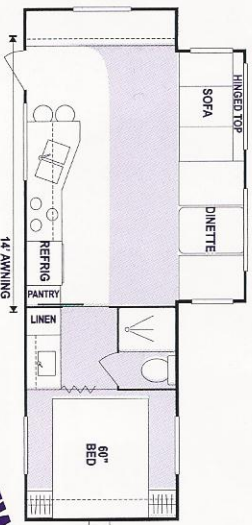


**2854P** (Opt. 4, 5) MP

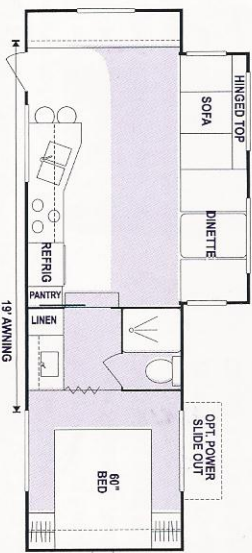


**3057Px2** (Opt. 4, 5) SU

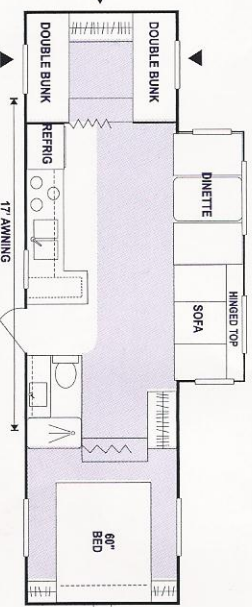
**KING BED!**



**2653P** (Opt. 4, 5) MP



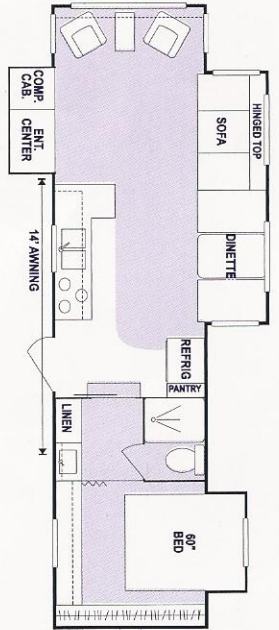
**2856P** (Opt. 4, 5, 6) SU/MP



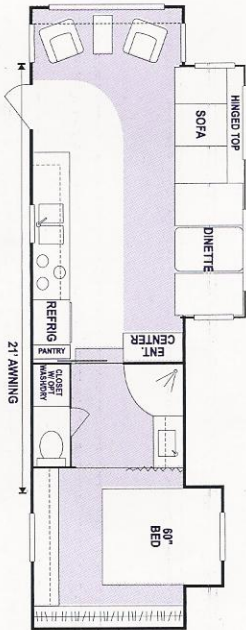
**3156PSS** (Opt. 4) MP  
70 cubic ft. of external storage!

**NEW!**

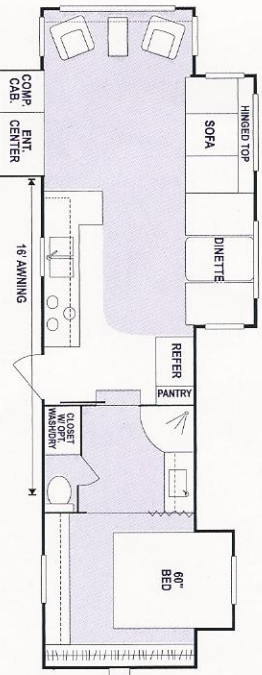
**NEW!**



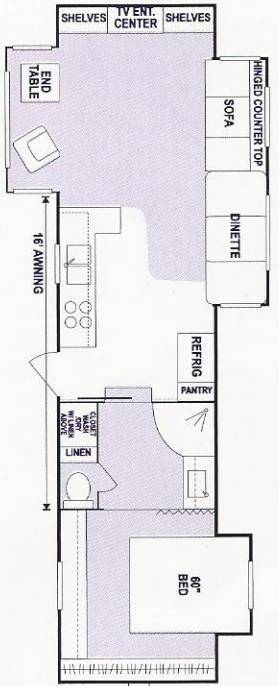
**3252Px3** (Opt. 4, 5, 6) SU



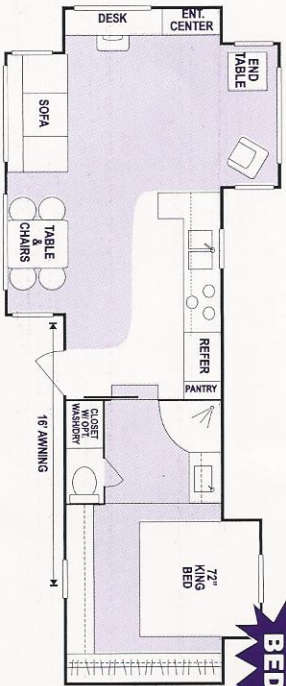
**3253Px2** (Opt. 4, 5, 6) SU



**3452Px3** (Opt. 4, 5, 6) SU

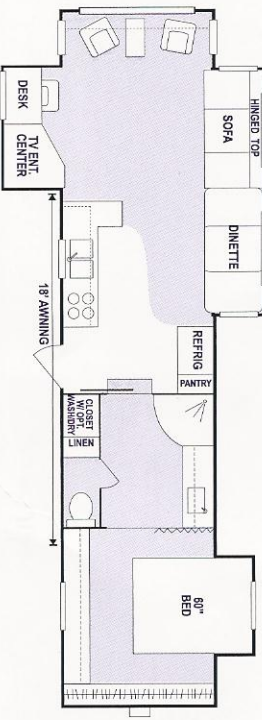


**3556Px3** (Opt. 4, 5, 6) SU



**3557Px3** (Opt. 4, 5) SU

**KING BED!**



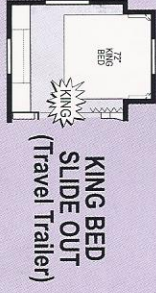
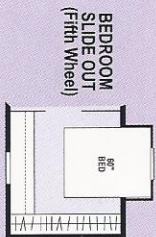
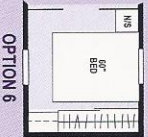
**3756Px3** (Opt. 4, 5, 6) SU

# FIFTH WHEELS

Sportsmen 2000

## OPTIONS

Customize your Sportsmen with one of these options. Floor plans indicate which options are available on each unit. Ask your dealer for details.



Note: Not all options are available on each unit. See available option list beside each model floorplan number.

**TRAVEL TRAILERS**

	2503	2604P	2704SS	2704PSS	2803	2803P	3003	3003P	3004SS	3006	3006P	3101P	3204PSS	3501P	3510P*2	3513P	3705P*2	3803P
UVW (Unloaded Vehicle Wt.)*	4500	5960	4520	6360	4900	6180	5100	6080	5060	5380	6440	6418	6880	7240	7480	7500	7840	7780
Dry Hitch Weight	600	780	400	760	760	960	540	580	720	980	1080	600	660	840	1040	540	1320	1100
Dry Axle Weight	3900	5180	4120	5600	4140	5220	4560	5500	4340	4400	5360	5518	6220	6400	6440	6960	6520	6680
NCC (Net Carrier Capacity)	2368	4040	2880	3640	2860	3820	2470	3920	2660	2610	3560	3682	3120	2760	2520	2500	2160	2220
GVWR	6868	10000	7400	10000	7760	10000	7570	10000	7720	7990	10000	10000	10000	10000	10000	10000	10000	10000
Interior Height	78"	78"	78"	78"	78"	78"	78"	78"	78"	78"	78"	78"	78"	78"	78"	78"	78"	78"
Exterior Width	96"	96"	96"	96"	96"	96"	96"	96"	96"	96"	96"	96"	96"	96"	96"	96"	96"	96"
Exterior Length	263"	283"	286"	296"	296"	296"	308"	308"	311"	311"	309"	324"	327"	356"	356"	356"	378"	388"
Exterior Height	115"	125"	115"	125"	115"	125"	125"	125"	115"	115"	125"	125"	125"	125"	125"	125"	125"	125"
Refrigerator (cubic feet)	6	6	6	6	6	6	6	6	6	6	6	6	6	6	6	6	6	6
Water Heater Cap. (gallons)	6	6	6	6	6	6	6	6	6	6	6	6	6	6	6	6	6	6
Fresh Water Cap. (gallons)	30	30	30	30	30	30	30	30	30	30	30	30	30	30	30	30	30	30
Black Water Cap. (gallons)	32	32	32	32	32	32	32	32	32	32	32	32	32	32	32	32	32	32
Gray Water Cap. (gallons)	32	32	32	32	32	32	32	32	32	32	32	32	32	32	32	32	32	32
LP Gas Cap. (lbs.)	60	60	60	60	60	60	60	60	60	60	60	60	60	60	60	60	60	60
Furnace BTU's (1,000's)	20	25	25	25	25	25	25	25	25	25	25	30	30	30	30	30	30	30
Tire Size	15"	15"	15"	15"	15"	15"	15"	15"	15"	15"	15"	15"	15"	15"	15"	15"	15"	15"

**FIFTH WHEELS**

	2456P	2552P	2653P	2851P	2854P	2856P	3051P*2	3057P*2	3156PSS	3252P*3	3253P*2	3452P*3	3556P*3	3557P*3	3756P*3
UVW (Unloaded Vehicle Wt.)*	6290	6420	6740	7300	6340	7020	8060	8100	6800	8490	8020	9120	920	9890	10780
Dry Hitch Weight	1180	1100	1480	1440	1100	1300	1740	1740	1200	1500	1640	1620	1860	1860	1740
Dry Axle Weight	5110	5320	5260	5860	5240	5720	6320	6360	5600	6990	6380	7500	8060	8030	9040
NCC (Net Carrier Capacity)	3710	3580	3260	4140	3360	4200	3680	3640	3200	3010	3620	2880	2880	2910	4220
GVWR	10000	10000	10000	11440	10000	10000	11740	11740	10000	11500	11640	12000	12800	12800	15000
Interior Height	78"	78"	78"	78"	78"	78"	78"	78"	78"	78"	78"	78"	78"	78"	78"
Exterior Width	96"	96"	96"	96"	96"	96"	96"	96"	96"	96"	96"	96"	96"	96"	96"
Exterior Length	25	26.2"	27	28.8"	29.4"	28.8"	31.3"	31.1"	32.10"	33	33	34.10"	35.10"	37.10"	
Exterior Height	126"	138"	130"	138"	130"	138"	138"	138"	130"	138"	138"	140"	140"	138"	
Refrigerator (cubic feet)	6	6	6	6	6	6	6	6	6	6	6	6	6	6	
Water Heater Cap. (gallons)	6	6	6	6	6	6	6	6	6	6	6	6	6	6	
Fresh Water Cap. (gallons)	55	55	55	55	55	55	55	55	55	55	55	55	55	55	
Black Water Cap. (gallons)	32	32	32	32	32	32	32	32	32	32	32	32	32	32	
Gray Water Cap. (gallons)	32	32	32	32	32	32	32	32	32	32	32	32	32	32	
LP Gas Cap. (lbs.)	60	60	60	60	60	60	60	60	60	60	60	60	60	60	
Furnace BTU's (1,000's)	25	25	25	25	25	25	30	30	30	30	30	35	35	35	
Tire Size	15"	15"	15"	15"	15"	15"	15"	15"	15"	15"	15"	16"	16"	15"	

**\* Limited Edition Models (all fiberglass)** adds approximately 10% to total weight.

**\* Additional Slide Out Rooms** each add approximately 500 lbs. to total weight.

**Sportsmen**

**K-Z Incorporated**

9270 West U.S. 20  
Shipshewana, IN 46565  
E-Mail: kzinco@shipshewana.com www.kz-tv.com  
Plant Location: 1 Mile West of S.R. 5 on U.S. 20

**Vehicle Loading**—Every effort has been made to provide the greatest number of options for the recreational owner. Each owner is responsible to select loads allowing the recreational vehicle to remain within the manufacturer's specified chassis weight limits. Do not overload the recreational vehicle.

**Dry Weights** are based on standard features only and do not include optional equipment. Carrying capacity is determined by subtracting Dry Gross Weight from GVWR and includes fluids, options and cargo.

Liquid capacities and weights are approximations only.

**NOTE:** This information is intended as a guide only. Weights of individual vehicles may vary. Consult your Owner's manual for complete loading, weighing & towing instructions.

**Dealer:**

**JERRY'S TRAILERS & CAMPERS**  
2601 S. 13th St.  
Folk, NE 68701  
(402) 371-1306