



Coachmen® RV

The Official RV of Disney's Fort Wilderness Resort and Campground
and Disney's Wide World of Sports™ Complex



Ultimate RVSM Vacation Program FREE!

Two Weeks RV Vacation

Two-Year Structural &
Major Components Warranty

FREE!
Coachmen Caravan
Owner's Club Membership
& Benefits

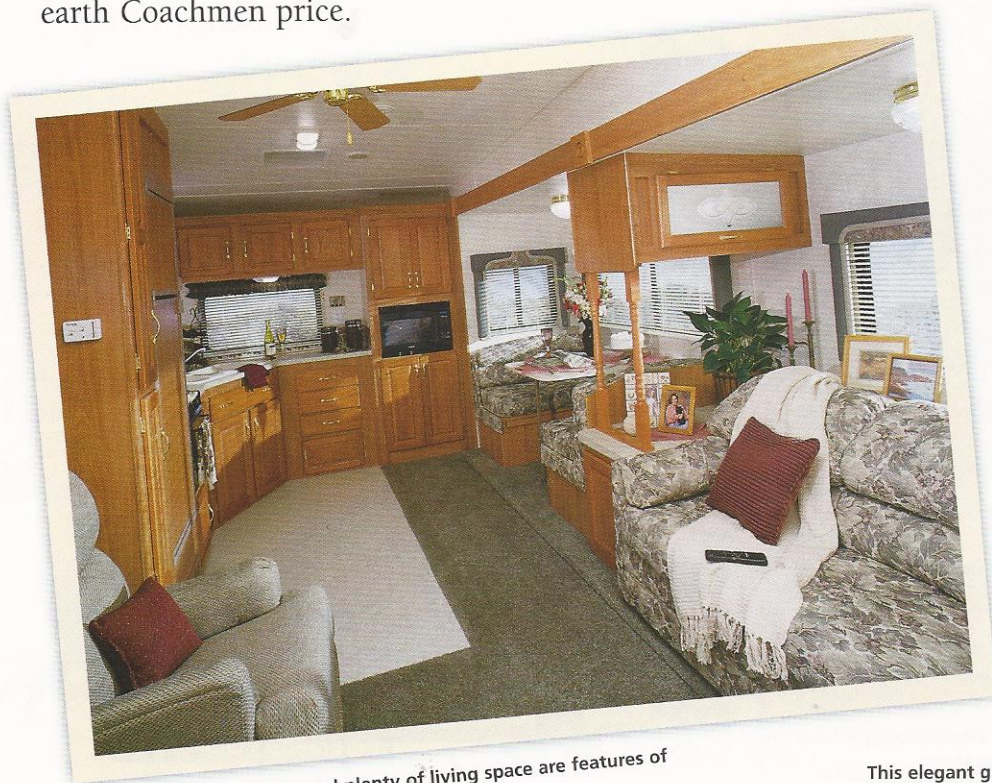


for the new millennium

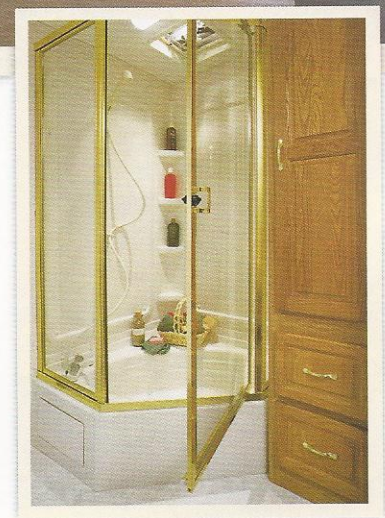
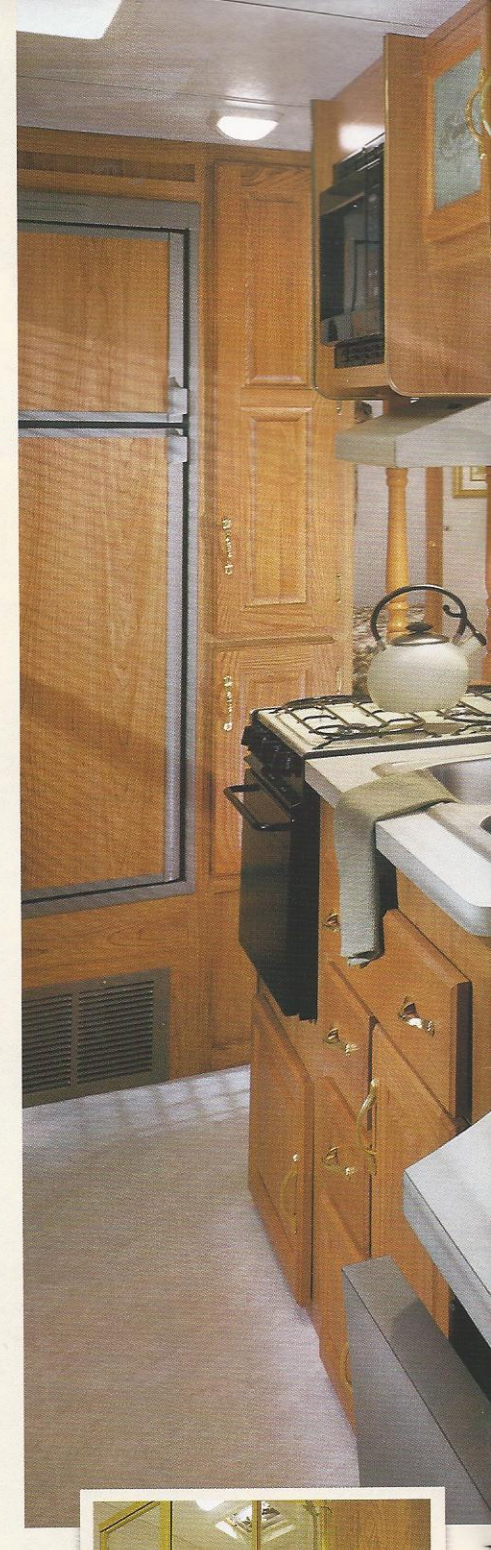
Upscale luxury... down to earth price.

As we enter a new century, Americans' love for travel continues to grow. Motivated by rediscovery of family, self-renewal and a desire to make the most of every day, we respond to the call of the open road like never before. Few towable RVs answer that call like Coachmen Royals.

A unique combination of cutting-edge technology and old-fashioned value, this is an RV built to go the distance. Whether you answer the call of the road by traveling coast to coast or by visiting the nearest campground, Royal's beauty, function and styling says "you've arrived". This is the upscale luxury RV with a down to earth Coachmen price.



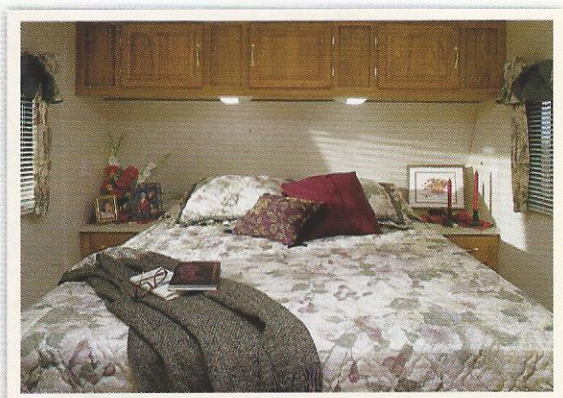
A well equipped galley and plenty of living space are features of the 285RKSW. Shown in Cypress Summer.



This elegant glass shower adds style and grace to your surroundings.



The 361FLS boasts this unique island kitchen/snack bar layout. Pictured in Somerset Autumn.



A comfortable nights sleep is no problem on Royal's deluxe queen bed.

Royal's sleek fiberglass sidewalls make an excellent impression on the road while its rugged aluminum framed structure provides outstanding strength and durability. The only word that adequately describes it is: "inspired". Spacious floor plans with luxury accommodations let you make the most of every moment of leisure time – no matter how or where you choose to spend it.

for the new millennium

Royal, Features Galore!

A complete photo album would be required to fully display the many features and innovations of Royal Travel Trailers and Fifth Wheels. Here are just a few of the many features available from Coachmen RV.

Decor Selections

Inspiration Blue



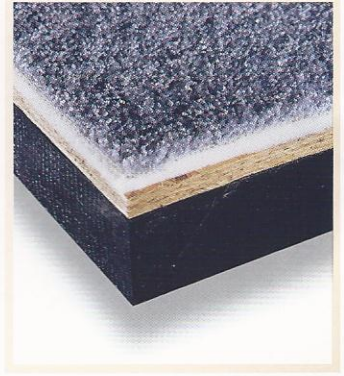
Meadow Brook



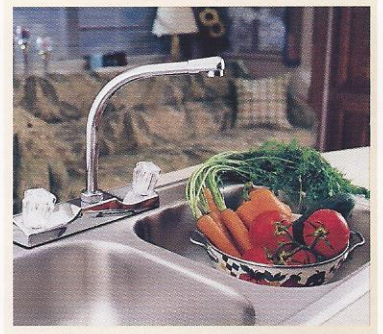
Somerset Autumn



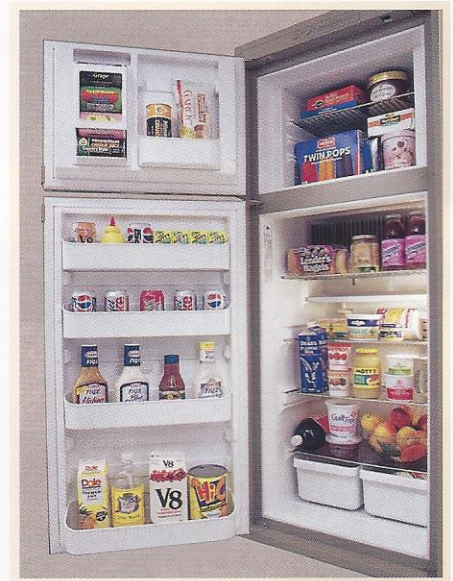
◀ Dazzling interiors feature skillfully coordinated upholstery and window treatments. What doesn't meet the eye is the exceptional quality of our furniture. Coachmen chooses only top-grade fabrics wear-dated as heavy-duty. These fabrics have been tested for durability beyond 15,000 double rubs (in and out action) to simulate heavy usage. An average chair in an American home is subjected to only 3,000 double rubs per year.



Residential quality continuous filament nylon carpeting with thick pad stands up to dirt and wear.



A contemporary high spout faucet is standard on the stainless steel sink.



Our spacious refrigerators feature a convenient interior light, and a handy freezer shelf.



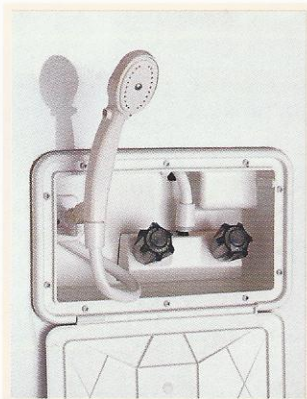
The optional microwave oven boasts a huge 1.2 cu.ft. interior space, making preparation of large dishes a breeze.



In-floor ducted heating with formed residential aluminum ducts that provide superior durability and even heat distribution throughout the unit.



Storage compartments are huge in Royal fifth wheels.



The optional outside shower stores easily with its retractable hose.



Royal roofs are covered with a seamless rubber skin and feature tapered rafters for superior water runoff and leak prevention.



Optional entertainment centers and components are available in select Royal floorplans.

for the new millennium

A Proud History of Quality & Value

Thank you for considering the purchase of a Coachmen RV. We would like to take this opportunity to tell you more about the Coachmen family and show you why you'll be "In Good Company With Coachmen".

In 1964, Coachmen Industries was founded by three brothers, Tom, Keith and Claude Corson. They built the company on principles such as:

- "Practice the Golden Rule"
- "Our Word is our bond"
- "Business goes where it is invited and stays where it is well cared for"
- "Dedicated to the enrichment of your life"

By staying committed to these principles, Coachmen has grown to become one of the largest full-line manufacturers of RVs in the world.

The Corson brothers started Coachmen Industries, Inc. in a 5,000 square foot plant in downtown Middlebury, Indiana. First year production included 12 travel trailers, a single truck camper and 80 truck caps. Since that time Coachmen Companies have produced nearly 600,000 recreational vehicles of all sizes and types.

In 1969, the Company became a public company, and in 1972 Coachmen was first listed on the American Stock Exchange. In January of 1978, the stock was approved for trading on the New York Stock Exchange. In 1984, Coachmen joined the ranks of the prestigious Fortune 500.



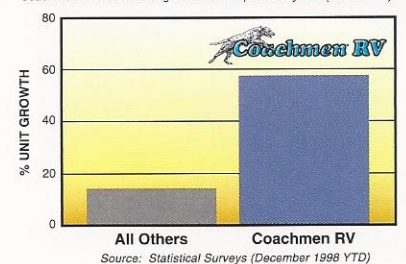
Come visit us at our Complex in Middlebury, Indiana (above) where you can relax at our Visitor's Center and enjoy guided tours of the assembly plants. Also visit us at our facilities in Fitzgerald, Georgia, Goshen, Indiana and Grants Pass, Oregon.

Today Coachmen Industries, Inc. has grown to become a diverse corporation. Aside from the Company's recreational vehicle operations, Coachmen Industries also is the country's largest producer of modular housing. Other markets served by Company divisions include office seating, recreational vehicle furniture and automotive parts and accessories as well as fiberglass and ABS components for recreational vehicles.

Coachmen Recreational Vehicle Company is the largest division and cornerstone of Coachmen Industries, Inc. and continues to be one of the industry's fastest growing companies in terms of sales and market share. Over the past five years, Coachmen RV has outperformed the rest of the industry by over 100%.

Incredible Sales Growth Continues

Coachmen RV cumulative growth for the past five years (1994-1998)



Our main headquarters and primary manufacturing facilities are located in Middlebury, Indiana. We also have manufacturing facilities in Goshen, Indiana, Fitzgerald, Georgia, and Grants Pass, Oregon. In all, we occupy nearly 700,000 square feet of manufacturing space on nearly 120 acres. Over 1,600 dedicated workers will produce approximately 15,000 Coachmen RVs within the year.

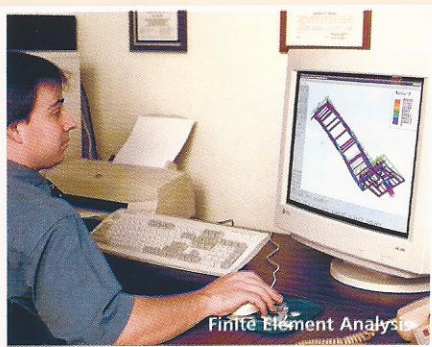
You will find proof of our dedication in our innovative and user-friendly products and our wide range of customer benefits and services. We are driven by a deep concern for your safety, comfort, pride of ownership and pleasure – in short, your Ultimate Satisfaction.

Take a closer look at Coachmen RV Company and see why we're known as the...

"Leader To The Great Outdoors".

Up-Front Design for Long Term Comfort

Founded in 1964, Coachmen is one of the oldest, continuous producing manufacturers of recreational vehicles. A secret of our success is our commitment to the continuous improvement of our products. We have learned that quality must be designed and built into the products, up front. Combining experience and technology, we are able to prevent many problems before they arise, through proper analysis and testing.



Design & Analysis

Unlike most companies, Coachmen uses computerized technology for much more than simple drafting applications.

At Coachmen RV, we utilize and rely on advanced computer technology to design and engineer a reliable and safe vehicle for you and your family. Finite Element Analysis helps evaluate structural integrity of components and systems quickly and efficiently. 3D model simulations and numerous other process and software systems are also used in the design and development of Coachmen recreational vehicles.

Computer weight testing is performed on every new model. Before a floorplan is approved, we know the approximate weights, including dry and loaded, front and rear axle weights and even side-to-side weights which affect towing. After a model is built, the computer analysis is manually verified.



Performance Testing

Coachmen does not want, nor expect, our customers to be the "proving ground." We believe it is our job to adequately test our products, before they reach our customers.

Coachmen subjects its new models to a myriad of stringent tests, before introduction to the customer. Rigorous road tests, sometimes up to 15,000 simulated miles, are performed on actual production units, to verify computer modeling. Studies are made of structural integrity, stress analysis, cabinetry durability, weight loading, vibration analysis and handling.

There can be little doubt that Coachmen has superior quality – by design.



Leak Prevention

Due to the complexity of the product, compounded by road vibration, water leaks can be a problem. Coachmen's quest is to eliminate this frustrating and potentially damaging problem.

Every corner – at the roof, floor and sidewall is wrapped, sealed and secured. All roof and sidewall openings receive framing reinforcement, and are sealed with a non-shrinking, pliable silicone.

To promote water drainage and leak protection, all roofs have tapered rafters.

Finally, every unit we produce is tested for leaks in a high-pressure rain chamber, designed to simulate a driving rain, not just a spring shower.

for the new millennium

A Company You Can Trust

For over 35 years Coachmen RV has been leading the RV Industry in product design, dependability and customer service support. We work very hard in seeking to have our products exceed your expectations. Equally important is the service that we provide during your ownership experience. Whether it be information about your unit, reliable warranties, or industry leading service support . . . Coachmen RV ranks second to no one.



Comprehensive Product Information

Your new Travel Trailer or Fifth Wheel comes with a complete *Owner Information Guide*. This comprehensive package provides a wealth of information about your new unit.

The guide contains everything you ever need to know about operation and maintenance including:

- Product Warranty Summary Booklet
- Owner's Manual
- Maintenance Guide
- Trouble Shooting Guide

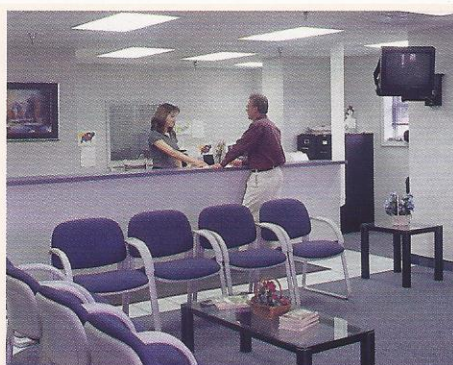
Manuals for all the major components, appliances and accessories are also included.

Owner's Video

Coachmen provides an owner's video with each new Coachmen RV. This helpful video walks you through a series of informative tips on how to prepare for a trip, use of your unit on the road, setting up your unit at your destination, getting back on the open road and unit storage tips.

Buckstopper Warranty

Your Owner's registration card and our famous Buckstopper Limited Warranty is your passport to worry free travel.



Coachmen RV features a complete parts and service center at the Middlebury, Indiana complex. Relax during your visit in our comfortable parts and service lounge.

Our nationwide network of approximately 350 authorized Coachmen Service Centers stand ready to provide you with courteous, dependable and timely service. Coachmen RV also owns and operates Regional Service Centers, all of which are committed to satisfying your needs.

Two Year Structural & Major Components Warranty

In addition to your One Year Buckstopper Warranty, you can travel with confidence knowing that all of your major structural components such as walls, ceilings, and floors are covered for two years by Coachmen's Extended Structural Limited Warranty. Coachmen products also come with a Two Year Component Manufacturer's

Limited Warranty on *select* major components and appliances, including TVs, VCR's, water heaters, furnaces, and select kitchen appliances to mention a few.

Transferable Warranty

Your Buckstopper Warranty may be transferred to a subsequent owner for a small registration fee, in the unlikely event you sell your Coachmen RV during the term of your one-year warranty period. This feature enhances the resale value of your Coachmen product.

Additional Service Support

Coachmen also provides a toll free service number for your assistance and convenience, along with a Priority Customer Parts Order program for overnight part shipments in critical repair situations. Coachmen's Service & Parts Department is staffed with trained professionals that are committed to satisfying your needs.

Ultimate Satisfaction – First

Coachmen RV owners regularly receive comprehensive surveys through our Ultimate Satisfaction – First (US1 Program). US1 questionnaires provide us with valuable information regarding our customers' products as well as the purchase and ownership experience. Listening to our customers helps us achieve your... "Ultimate Satisfaction – First".

Enjoy Your Coachmen RV More with International Caravan



Your purchase of a Coachmen recreational vehicle qualifies you for a free, one-year membership in the International Coachmen Caravan, the nation's largest manufacturer sponsored RV club.

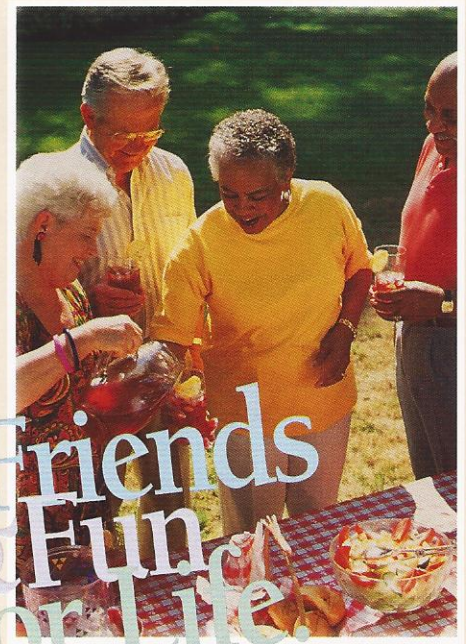
Consisting of over 23,000 member families, the Coachmen Caravan was formed in 1966 to help our owners enjoy RV ownership to the fullest.

With Coachmen, unlimited opportunities exist for you and your family to form lifelong friendships; improve and share your unique talents, skills and crafts; be active in running your club; and exchange ideas, information and helpful hints — all these, plus the many benefits outlined below, are uniquely yours through the International Coachmen Caravan.

Incredible Membership Benefits.

In addition to automatically expanding your circle of friends, your Caravan membership brings you a multitude of benefits:

- ✓ Free \$5,000 Accidental Death and Dismemberment Insurance policy, with additional policies available for \$5 a year.
- ✓ Emergency road service and RV insurance at low rates.
- ✓ Free trip-planning service.
- ✓ 10% Discounts at over 4,000 campgrounds in the U.S. and Canada.
- ✓ Free annual Campground Directory.
- ✓ Hassle-free group travel to popular destinations.
- ✓ Free lost-key return service.
- ✓ Organized campouts, meetings and parties.
- ✓ Free subscription to COACHMEN CAPERS, the club's quarterly magazine.



Friends
& Fun
For Life.

- ✓ Annual International Rally Week.
- ✓ A Coachmen Caravan MasterCard with no annual fee and low interest.
- ✓ Free I.D. card, Caravan key ring, vehicle decals and I.D. numbers.
- ✓ Discounts on club clothing, accessories, film developing and selected RV publications.

2 Weeks RV Vacation **FREE** at Premier RV Destinations. Plus **FREE** Trip Routing Service.



Now you can experience the RV lifestyle at it's very best with Coachmen RV's **Ultimate RV Vacation Program***. Purchase any new Coachmen Class A Motorhome, Class C Mini Motorhome, Travel Trailer or Fifth Wheel and Coachmen RV will provide **2 weeks of free camping** at premier RV destinations across the country.

The Ultimate RV Vacation Program is convenient and easy to use. Coachmen RV has done all the work for you. See your authorized Coachmen RV dealer to obtain our comprehensive Ultimate RV Vacation Booklet. The Booklet provides detailed profiles of each participating resort so all you have to do is choose a location and make your reservation. It's as easy as that! See your nearest Coachmen RV dealer now for all the details of this great new program.

*Certain restrictions apply

Coachmen RV Invites Public to Tour Facilities

The Coachmen Visitor's Center in Middlebury, Indiana is your starting point for weekday tours of our motorhome, travel trailer and fifth wheel manufacturing plants. Also located at the Visitor's Center is the headquarters of the



International Coachmen Caravan Owners Club and the Coachmen RV store "Pete's Market", loaded with a large selection of Coachmen RV clothes and merchandise. Please call ahead for tour information and times. The Coachmen RV plants in Fitzgerald, Georgia, Goshen, Indiana and Grants Pass, Oregon produce travel trailers and fifth wheels only. Motorhome production tours are available only at the Middlebury location.

for the new millennium

Take a Closer Look at Coachmen Quality Construction

1 We believe in our products and back them with a two year structural and major components warranty.

2 We deck our entire roof to add strength and to assure a smooth roof, which improves water run off.

3 Aluminum roof trusses offer terrific strength.

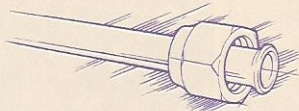
4 Wood cabinets, are screwed (not stapled!) to backers in the sidewalls so they stay secure and won't pull free.

5 Our entry door is 30" wide, has an integrated drip rail and is painted to avoid unattractive metal oxidation which occurs on unpainted door frames.

6 Equipped with an abundance of interior and exterior lighting including an off-door-side porch light, LP light and a porch light.

7 Our sidewalls are built with welded 1-1/2" tubular aluminum set on 16" centers, with double framing around entrance doors to provide exceptional strength.

8 We insulate around every refrigerator to improve operating efficiency and prolong the trouble free life of the refrigerator.



9 All copper LP lines with double flare fittings help assure no rust will back up into and damage your appliances the way black steel LP lines can.

10 Plumbing - All fresh water lines are polyethylene (crack and freeze resistant). Holding tanks are crafted from rotocast and durable polypropylene.

11 Take a look under the floor at our well organized and secure electrical wiring and LP lines.

12 Weyerhaeuser Structurwood Floors come in 24 foot lengths to reduce seams and create a floor 10% stronger than plywood.

13 Residential style aluminum floor ducting distributes heat throughout the unit from a centrally located electronic ignition furnace.



28 Coachmen's "Even Cool" ducted roof air conditioning provides quiet, cool air that easily distributes through the same extruded baffled ducting used in household construction.

27 Our slide room openings are triple studded using 1-1/2" welded tubular aluminum to provide tremendous strength to the slide room area.

26 Seamless rubber roofs are crowned to allow controlled water run-off, which helps prevent leaks.

25 All roof seams are sealed with butyl rubber based sealants that expand and contract with the climate to help prevent leaks.

24 Safety is utmost. The LP leak alarm, fire extinguisher, smoke detector and heavy link safety chain are all standard.

23 We taper the slideroom roof to assure controlled water run-off.

22 We use only radius clamp ring windows which have no exterior fasteners or screw covers. We seal our windows with butyl encapsulated foam for years of trouble free use.

21 Windows in the slideroom sidewall provide an open feeling and are always slide windows (not jalousie) to prevent accidents when moving your slideroom.

20 Owens-Corning fiberglass insulation, with an R-7 rating, is carefully hand packed between each stud to maximize the insulation's effectiveness.

19 Slide room floors are framed in tubular steel to provide a solid foundation.

18 All wheel wells are galvanized steel and are sealed and undercoated with Kendall Automotive Sound & Seal.

17 Independent suspension and brakes on all wheels with automotive studded hubs and lug nuts.

15 We wrap the entire underbelly with an extremely tear resistant, fiber laminated, polypropylene material called Darco to help keep water and dirt out.

14 Steel framing, with full width steel outriggers and cross members provide a reliable foundation to build upon.

16 All outside storage doors have latches to hold the door open which makes access to the storage areas easier. Abundant interior storage includes large residential style closet drawers and innovative under sink utensil drawer. All drawers utilize reliable metal drawer glides.

Note: Tubular steel frame shown in illustration. Some fifth wheel units contain I-beam steel.

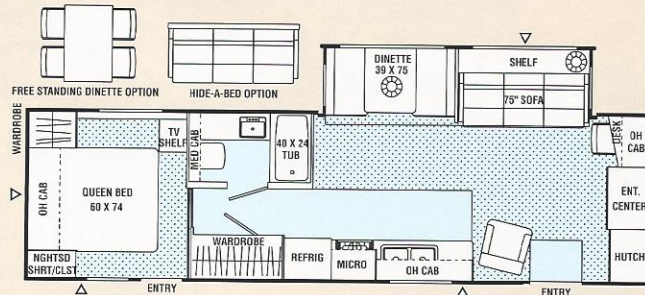
Royal

for the new millennium

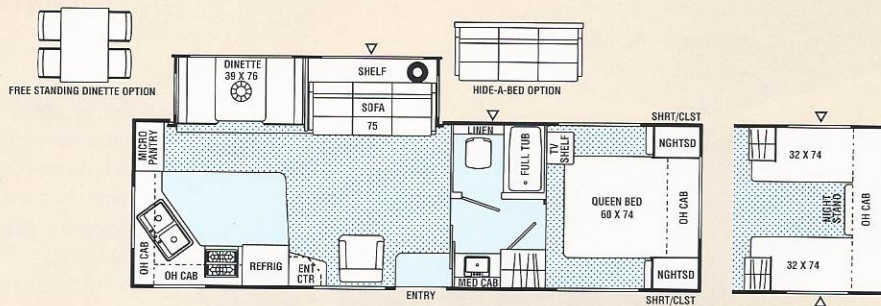


291fls / Front Lounge / Slide-Out / Wide Body

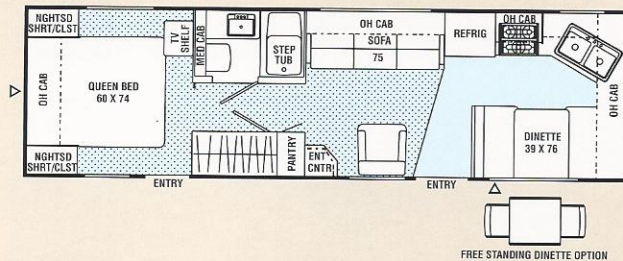
NEW



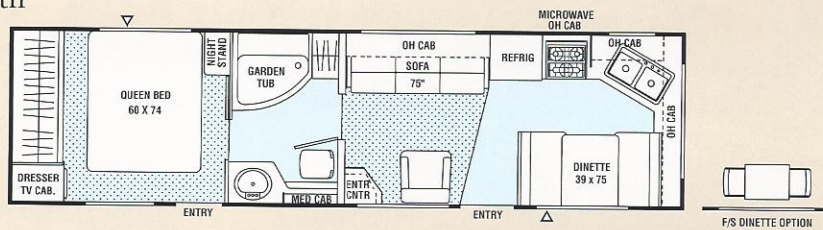
297rks / Rear Kitchen / Slide-Out / Wide Body



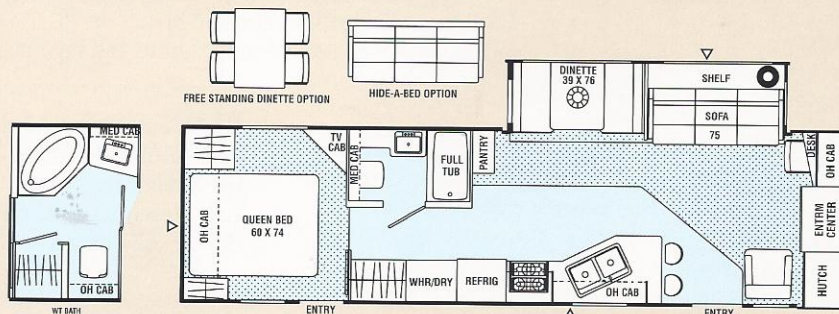
298fk / Front Kitchen



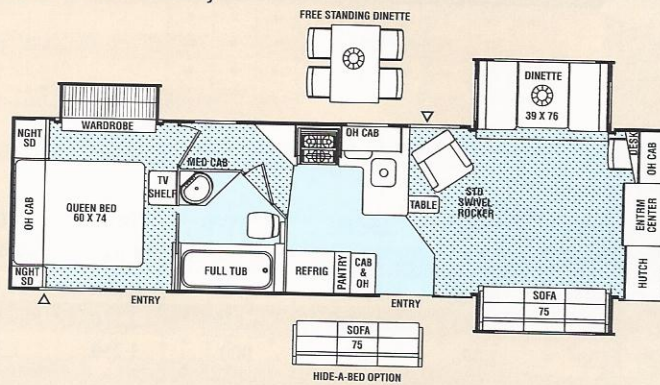
310wb / Walk Thru Bath



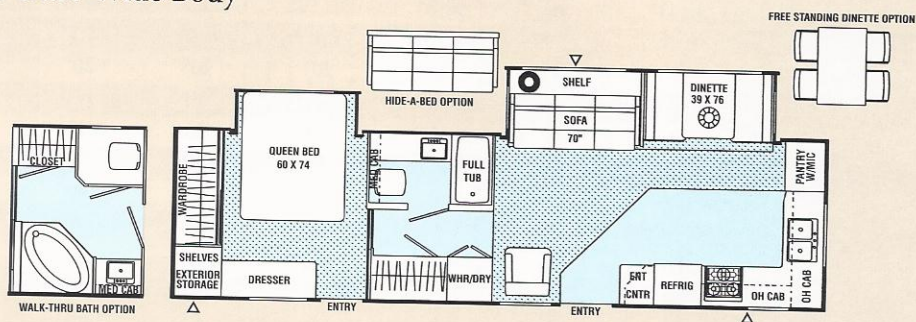
338fls / Front Lounge / Slide-Out / Wide Body



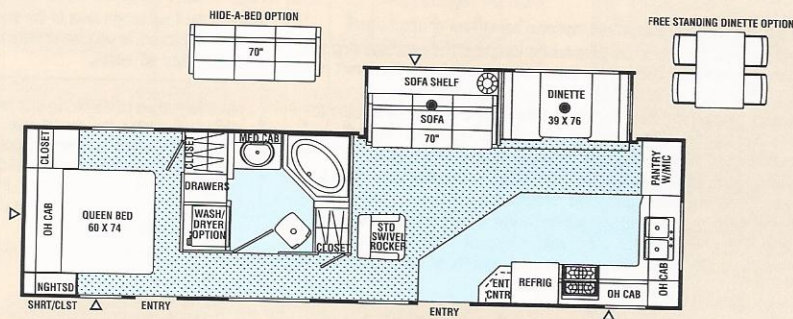
340sa / Side Aisle / Slide-Out / Wide Body



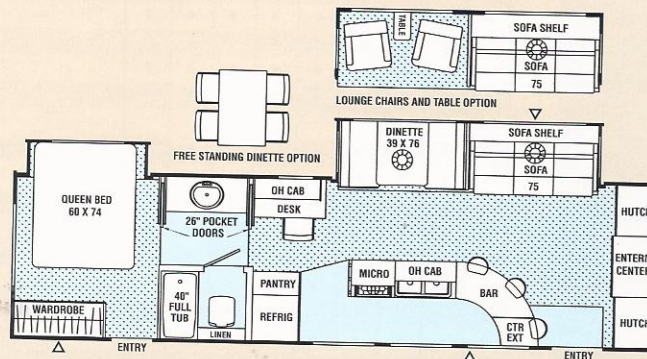
342ds / Dinette Slide-Out / Wide Body



348fks / Front Kitchen / Slide-Out / Wide Body



361fls / Front Lounge / Slide-Out / Wide Body



INDICATES CARPETING
 INDICATES OUTSIDE STORAGE LOCATION

Specifications

	291FLS	297RKS	298FK	310WB	338FLS	340SA	342DS	348FKS	361FLS
Base Weight	8,370 [†]	7,716	5,640	5,790	8,624	9,405	9,055	8,902	9,424
GVWR	10,800	9,090	7,600	7,600	10,800	10,800	10,800	10,800	10,800
Carrying Capacity	2,430 [†]	1,373	1,960	1,810	2,176	1,395	1,745	1,898	1,376
Hitch Weight	1,150 [†]	1,090	870	900	1,250	1,330	1,410	1,290	1,040
Axle Weight	7,220 [†]	6,626	4,770	4,890	7,374	8,075	7,645	7,460	8,384
Interior Height	6' 10"	6' 10"	6' 6"	6' 6"	6' 10"	6' 10"	6' 10"	6' 10"	6' 10"
Exterior Height**	10' 3"	10' 3"	9' 3"	9' 3"	10' 4"	10' 4"	10' 4"	10' 4"	10' 4"
Exterior Length	32' 11"	31'	30' 8"	32' 10"	33' 8"	34' 8"	34' 2"	34' 8"	35' 1"
Exterior Width	8' 5"	8' 5"	7' 10"	7' 10"	8' 5"	8' 5"	8' 5"	8' 5"	8' 5"
Hitch Pin Height	19"	19"	20"	20"	20"	20"	20"	20"	20"
Sleeping Capacity	6	6/4	6/4	6	6/4	6/4	6	4/6	6
Fresh Water Capacity (gal.)	36	36	30	30	36	40	36	36	36
Waste Water Capacity (gal.)	40	40	42	32	40	54	40	42	42
Grey Water Capacity (gal.)	42	42	34	32	42	40	56	56	70
Water Heater Capacity	6	6	6	6	6	6	6	6	6
LP Gas Capacity (lb.)	60	60	60	60	60	60	60	60	60
Furnace Rating (x 1,000)	35	31	31	31	35	40	40	40	40
Tire Size	□	●	△	△	□	□	□	□	□

* Add 10" for Roof Air Conditioner * Add 12" for Satellite Dish † = Estimated at time of printing △ = ST205/75R15C ● = ST225/75R15C □ = ST225/75R15D

Base Weight: The weight of the unit with no fluids, cargo, optional equipment or accessories.

GVWR (Gross Vehicle Weight Rating): The maximum permissible weight of the unit, including the Base Weight plus all fluids, cargo, optional equipment and accessories. For safety and product performance, do not exceed the GVWR.

Carrying Capacity: The difference between the Base Weight and the GVWR. This is the amount of weight available for all fluids, cargo, optional equipment and accessories. The actual "loaded" weight will depend on the equipped unit and the owner's individual choice of cargo, etc.

Wider Widths: Numerous Coachmen floorplans feature the "wide body" design concept, which gives you significantly enhanced interior living space and innovative floorplans.

In making your purchase decision, you should be aware that a few states restrict access on some or all roads within the state to vehicles with a maximum 96" width, although special road usage permits may be available. Vehicles up to 102" in width are permitted in the vast majority of states. You should

confirm the road usage laws in the states of interest to you before making your purchase decision. If width is of concern to you, we invite you to consider the broad array of other Coachmen models offered in the standard 96" width.

All information contained in this brochure is believed to be accurate at the time of publication. However, during the model year, it may be necessary to make revisions and Coachmen reserves the right to make all such changes without notice, including changes in prices, colors, materials, equipment and specifications, as well as the addition of new models and the discontinuance of models shown in this brochure. Therefore, please consult with your Coachmen dealer and confirm the existence of any materials, design or specifications that are material to your purchase decision.

Standard Features

INTERIOR AND DECOR

	291FLS	297RKS	298FK	310WB	338FLS	340SA	342DS	348FKS	361FLS
Golden Cherry Finish Cabinets
Hardwood Cabinet Doors - Coach & Kitchen
Residential Metal Drawer Glides
Partial Carpet with Pad
Linoleum Flooring - Kitchen & Bath
Mini Blinds - Coach
Mini Blinds - Bedroom
Radius Windows
Home Entertainment Cabinet
Side Dinette
Jack Knife Sofa
Swivel Rocker
Four Prewired Stereo Speakers
Cable TV Jack
TV Antenna and Rotor Package
TV Shelf - Bedroom
LP Leak Alarm
Pre-Wired for Satellite Dish

GALLEY

Microwave Ready
3-Burner (High Output) Range with Oven
Power/Lighted Range Hood
Flush Mount, Double Door Refrigerator
Monitor Panel
Stainless Steel Sink
Silverware Drawer

SLEEPING

Queen Bed
Deluxe Innerspring Mattress - 312 Coil
Bedspring and Pillow Shams
Bedlift System on Island QB

BATH AND WATER

Marine Toilet
Power Bath Vent
One-Piece ABS Tub Surround
6-Gallon Water Heater
Water Heater By-Pass Valve
Demand Water Pump
Decorative Bath Hardware
Medicine Cabinet

ELECTRICAL/HEATING/AIR CONDITIONING

Outside Receptacle GFI
Patio Light
Off Door Side Utility Light
LP Light
Double 30 LB LP Bottles w/Auto Change-Over
31,000 BTU E.I. Furnace
35,000 BTU E.I. Furnace
40,000 BTU E.I. Furnace
In-Floor Ducted Heat
Prewired for Roof Air Conditioning

EXTERIOR/CONSTRUCTION

Rubber Roof
Fiberglass Insulation
Gutter Rail
30" Wide Entrance Door
Rear Hose Storage Steel Bumper
Double Entry Step - Primary Door
Triple Entry Steps at Primary Door
Dead Bolt Lock(s)
Secondary Entrance Door
Rack & Pinion Slide-Out Room
Retractable Stabilizer Jacks
Straight Axles
Radial Tires/Rally Wheels
Radius Baggage Doors
Fiberglass Sidewalls
Clear Safety Glass Radius Windows
Aluminum Framed Walls & Roof

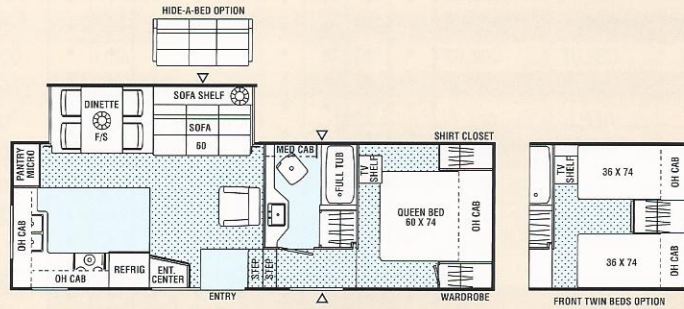
Optional Features

- Twin Beds (297RKS, 364TBS)
- Two Bar Stools (338FLS, 364TBS)
- Three Bar Stools (361FLS)
- Free-Standing Dinette w/4 Chairs (297RKS, 338FLS, 340SA, 342DS, 348FKS, 361FLS, 364TBS)
- Free-Standing Dinette w/2 Chairs (298FK, 310WB)
- Lounge Chairs w/Table (361FLS)
- Deluxe Sofa w/Hide-A-Bed (297RKS, 338FLS, 340SA, 342DS, 348FKS, 364TBS)
- Complete Elite Satellite System
- Residential AM/FM Stereo w/Cassette & CD
- Outside Entertainment Center
- Washer/Dryer Ready (338FLS, 342DS, 348FKS)
- Combo: Washer and Dryer (338FLS, 342DS, 348FKS)
- Phone Jack
- Wall Hugger Recliner (Except 361FLS)
- 13" Color TV (297RKS, 298FK, 310WB, 342DS, 348FKS)
- 25" Color TV (291RKS, 338FLS, 340SA, 361FLS)
- Large, Flush Mount, Dbl. Door Refrig.
- Residential Size Microwave Oven
- 6-Gallon Gas/Electric E.I. Water Heater
- 6-Gallon E.I. Water Heater
- 10-Gallon Gas/Electric E.I. Water Heater (338FLS, 342DS, 348FKS)
- Glass Shower Door (338FLS, 342DS)
- Bifold Shower Door (310WB)
- Walk Thru Bath (338FLS, 342DS)
- Outside Shower
- Tinted Safety Glass - Radius Windows
- Ducted Roof Air Conditioning
- 2nd 13,500 BTU Roof Air Conditioner (291FLS, 310WB & Up)
- Wire and Frame 2nd Air Conditioner (291FLS, 310WB & Up)
- 50 Amp. Service (291FLS, 310WB & Up)
- LP Bottle Cover
- Power Hitch Jack
- Spare Tire Kit (297RKS, 298FK, 310WB) C-Range
- Spare Tire Kit (Except on 340SA) D-Range
- Retractable Stabilizer Jacks (Non-Slide Models)
- Straight Axles (Non-Slide Models)
- Awning
- Slide-Out Room Awning-Bedroom (340SA, 342DS, 361FLS)
- Slide-Out Room Awning-Off Doorside (All Slide Models)
- CSA Upfit (Except on Wide-Body)
- Vinyl Plank Flooring-Kitchen (297RKS, 338FLS, 340SA, 342DS, 361FLS)

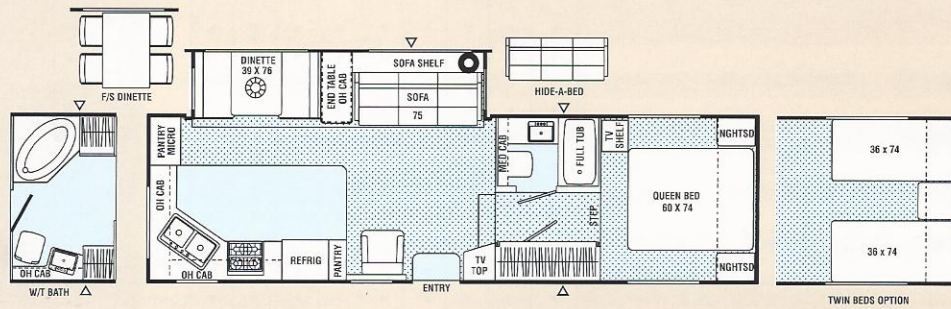


279sa / Side Aisle / Slide-Out / Wide Body

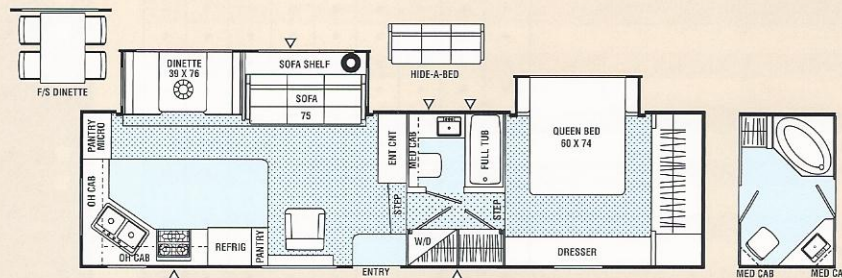
NEW





285rksw / Rear Kitchen / Slide-Out / High Profile / Wide Body



320rks / Rear Kitchen / Slide-Out / High Profile / Wide Body



-  INDICATES CARPETING
-  INDICATES OUTSIDE STORAGE LOCATION

Specifications

	279SA	285RKS	320RKS	325RLS	358RLTS	365IKS
Base Weight	8,700 [†]	9,410	10,613	10,700 [†]	11,696	12,558
GVWR	12,150 [†]	11,980	14,770	14,550 [†]	14,890	15,060
Carrying Capacity	3,450 [†]	2,570	4,157	3,850 [†]	3,194	2,502
Hitch Weight	2,150 [†]	1,980	2,770	2,550 [†]	2,890	3,060
Axle Weight	6,550 [†]	7,430	7,843	8,150 [†]	8,806	9,498
Interior Height	6' 10"	6' 10"	6' 10"	6' 10"	6' 10"	6' 10"
Exterior Height**	11' 10"	11' 10"	11' 11"	11' 11"	11' 11"	11' 11"
Exterior Length	28'	31' 4"	33' 8"	33' 8"	36' 5"	36' 5"
Exterior Width	8' 5"	8' 5"	8' 5"	8' 5"	8' 5"	8' 5"
Hitch Pin Height	45"	45"	45"	45"	45"	45"
Sleeping Capacity	4	6/4	4/6	4	6	4/6
Fresh Water Capacity (gal.)	53	53	53	50	54	54
Waste Water Capacity (gal.)	50	40	40	50	50	50
Grey Water Capacity (gal.)	50	40	40	50	50	50
Water Heater Capacity	6	6	6	6	6	6
LP Gas Capacity (lb.)	60	60	60	60	60	60
Furnace Rating (x 1,000)	31	31	35	35	40	40
Tire Size	X	X	■	■	■	■

* Add 10" for Roof Air Conditioner

[†] = Estimated at time of printing

* Add 12" for Satellite Dish

□ = LT235/85R16E

X = ST225/75R15D

Base Weight: The weight of the unit with no fluids, cargo, optional equipment or accessories.

GVWR (Gross Vehicle Weight Rating): The maximum permissible weight of the unit, including the Base Weight plus all fluids, cargo, optional equipment and accessories. For safety and product performance, do not exceed the GVWR.

Carrying Capacity: The difference between the Base Weight and the GVWR. This is the amount of weight available for all fluids, cargo, optional equipment and accessories. The actual "loaded" weight will depend on the equipped unit and the owner's individual choice of cargo, etc.

Wider Widths: Numerous Coachmen floorplans feature the "wide body" design concept, which gives you significantly enhanced interior living space and innovative floorplans.

In making your purchase decision, you should be aware that a few states restrict access on some or all roads within the state to vehicles with a maximum 96" width, although special road usage permits may be available. Vehicles up to 102" in width are permitted in the vast majority of states. You should

confirm the road usage laws in the states of interest to you before making your purchase decision. If width is of concern to you, we invite you to consider the broad array of other Coachmen models offered in the standard 96" width.

All information contained in this brochure is believed to be accurate at the time of publication. However, during the model year, it may be necessary to make revisions and Coachmen reserves the right to make all such changes without notice, including changes in prices, colors, materials, equipment and specifications, as well as the addition of new models and the discontinuance of models shown in this brochure. Therefore, please consult with your Coachmen dealer and confirm the existence of any materials, design or specifications that are material to your purchase decision.

Standard Features

INTERIOR AND DECOR

	279SA	285RKSW	320RKS	325RLS	358RLTS	365IKS
Golden Cherry Finish Cabinets	•	•	•	•	•	•
Hardwood Cabinet Doors - Coach & Kitchen	•	•	•	•	•	•
Residential Metal Drawer Glides	•	•	•	•	•	•
Carpet with Pad - Living Room & Bedroom	•	•	•	•	•	•
Mini Blinds - Coach	•	•	•	•	•	•
Mini Blinds - Bedroom	•	•	•	•	•	•
Linoleum Flooring - Kitchen & Bath	•	•	•	•	•	•
Mini Blind - Kitchen	•	•	•	•	•	•
Radius Windows	•	•	•	•	•	•
Side Dinette	•	•	•	•	•	•
Free Standing Dinette	•	•	•	•	•	•
Jack Knife Sofa	•	•	•	•	•	•
Swivel Rocker	•	•	•	•	•	•
Four Prewired Stereo Speakers	•	•	•	•	•	•
Cable TV Jack	•	•	•	•	•	•
TV Antenna and Rotor Package	•	•	•	•	•	•
TV Shelf - Bedroom	•	•	•	•	•	•
LP Leak Alarm	•	•	•	•	•	•
Trash Can	•	•	•	•	•	•
Pre-Wired for Satellite Dish	•	•	•	•	•	•
GALLEY						
Microwave Ready	•	•	•	•	•	•
3-Burner (High Output) Range with Oven	•	•	•	•	•	•
Power/Lighted Range Hood	•	•	•	•	•	•
Flush Mount, Double Door Refrigerator	•	•	•	•	•	•
Monitor Panel	•	•	•	•	•	•
Stainless Steel Sink	•	•	•	•	•	•
Silverware Drawer	•	•	•	•	•	•
Composite Sink	•	•	•	•	•	•
SLEEPING						
Queen Bed	•	•	•	•	•	•
Deluxe Innerspring Mattress - 312 Coil	•	•	•	•	•	•
Bedsprad and Pillow Shams	•	•	•	•	•	•
Bedlift System on Island QB	•	•	•	•	•	•
ELECTRICAL/HEATING/AC						
30-Amp. Power Cord	•	•	•	•	•	•
50-Amp. P.C.	•	•	•	•	•	•
GFI Circuit	•	•	•	•	•	•
Outside Receptacle GFI	•	•	•	•	•	•
Patio Light	•	•	•	•	•	•
Off-Door-Side Utility Light	•	•	•	•	•	•
Hitch Light	•	•	•	•	•	•
Double 30 LB LP Bottles w/Auto Change-Over	•	•	•	•	•	•
31,000 BTU E.I. Furnace	•	•	•	•	•	•
35,000 BTU E.I. Furnace	•	•	•	•	•	•
40,000 BTU E.I. Furnace	•	•	•	•	•	•
In-Floor Ducted Heat	•	•	•	•	•	•
Prewired for Roof AC	•	•	•	•	•	•
BATH AND WATER						
Marine Toilet	•	•	•	•	•	•
Power Bath Vent	•	•	•	•	•	•
6-Gallon Water Heater	•	•	•	•	•	•
Water Heater By-Pass Valve	•	•	•	•	•	•
One-Piece ABS Tub Surround	•	•	•	•	•	•
Demand Water Pump	•	•	•	•	•	•
Decorative Bath Hardware	•	•	•	•	•	•
Medicine Cabinet	•	•	•	•	•	•
EXTERIOR/CONSTRUCTION						
Clear Safety Radius Windows	•	•	•	•	•	•
Rubber Roof	•	•	•	•	•	•
Fiberglass Sidewalls	•	•	•	•	•	•
Fiberglass Insulation	•	•	•	•	•	•
Awning Rail	•	•	•	•	•	•
Triple Entry Step - Primary Door	•	•	•	•	•	•
Dead Bolt Lock(s)	•	•	•	•	•	•
Rear Hose Storage Steel Bumper	•	•	•	•	•	•
Electric Slide Room	•	•	•	•	•	•
Retractable Stabilizer Jacks	•	•	•	•	•	•
30" Wide Radius Entrance Door	•	•	•	•	•	•
Radial Tires	•	•	•	•	•	•
Rally Wheels	•	•	•	•	•	•
Radius Baggage Doors	•	•	•	•	•	•
Aluminum Framed Walls and Roof	•	•	•	•	•	•

Optional Features

- Twin Beds (285RKSW, 279SA)
- Free-Standing Dinette w/Four Chairs (Standard on 279SA, 325RLS)
- Rear Sofa (358RLTS)
- 3 Bar Stools (365IKS)
- Deluxe Sofa w/Hide-A-Bed (Except 365IKS)
- Rear Entertainment Center (325RLS, 358RLTS)
- Wall Hugger Recliner
- 2nd Wall Hugger Recliner (325RLS, 358RLTS, 365IKS)
- Vinyl Plank Flooring (Except on 365IKS)
- Residential AM/FM Stereo w/Cassette and CD
- 13" Color TV (285RKSW)
- 19" Color TV (320RKS, 325RLS, 358RLTS)
- 25" Color TV (365IKS)
- Outside Entertainment Center
- Washer/Dryer Ready (320RKS, 325RLS, 358RLTS, 365IKS)
- Combo Washer/Dryer (320RKS, 325RLS, 358RLTS, 365IKS)
- Phone Jack
- Two Double Door Refers (320RKS, 365IKS)
- Large, Flush Mount, Double Door Refrigerator
- Residential Size Microwave Oven
- 6-Gallon Gas/Electric E.I. Water Heater
- 6-Gallon E.I. Water Heater
- 10-Gallon Gas/Electric E.I. Water Heater (Except on 279SA, 285RKS)
- Glass Shower Door (279SA, 285RKS, 320RKS, 325RLS, 358RLTS, 365IKS)
- Walk Thru Bath (285RKS, 320RKS)
- MidBath (325RLS)
- Outside Shower
- Ceiling Fan (Except on 365IKS)
- Tinted Safety Glass - Radius Windows
- Ducted Roof Air Conditioning (Except on 358RLTS, 365IKS)
- Second 13,500 BTU Roof Air Conditioner (w/Option 317 358RLTS, 365IKS)
- Wire and Frame for 2nd A/C (Standard on 358RLTS, 365IKS)
- 7.0 Generator (Except on 279SA, 285RKSW)
- Generator Ready (Except on 279SA, 285RKSW)
- 50 Amp. Service
- Electric Front Jacks - Single Motor (279SA, 285RKSW)
- Electric Front Jacks - Dual Motor (320RKS Thru 365IKS)
- Spare Tire Kit (279SA, 285RKS)
- Spare Tire Kit (320RKS Thru 365IKS) (16" Wheels)
- Luggage Rack and Ladder
- Shock Absorbers
- Awning
- Slide-Out Room Awning - Doorside (358RLTS, 365IKS)
- Slide-Out Room Awning - Bedroom (Except on 279SA, 285RKSW)
- Slide-Out Room Awning Off Doorside
- Two Ducted A.C. (358RLTS, 365IKS)
- Complete Elite Satellite System
- CSA Uplift (Except on Wide Body)

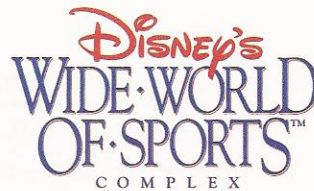
Coachmen RV Forges Alliance with Disney

Coachmen RV Company and WALT DISNEY WORLD® Resort, respective leaders in the recreational vehicle (RV) and entertainment/family vacation industries, have formed an alliance that will allow the companies to work together into the new millennium. Coachmen is now the Official RV of Disney's Fort Wilderness Resort and Campground and Disney's Wide World of Sports™ Complex in Florida.

As part of this new alliance, Coachmen RV's will be prominently displayed at Disney's 750-acre campground resort. Disney's Fort Wilderness Resort and Campground, affectionately known as the "most magical campground in the World", boasts nearly 800 campsites, 700 of which are full hook-up sites for RVs. It also features over 400 deluxe Wilderness Cabins as well as various recreational and entertainment facilities. This elite resort is one of the three original vacation

resorts opened when WALT DISNEY WORLD® Resort premiered in 1971. A Coachmen RV is expected to be displayed near Pioneer Hall, home of the popular Hoop-Dee-Do Musical Revue, the longest running dinner show at WALT DISNEY WORLD® Resort. Fort Wilderness is also being added as a premier vacation option in Coachmen's Ultimate RV™ Vacation Program.

Coachmen RV's will also be a part of the Disney magic at Disney's Wide World of Sports™ Complex. Spanning 200 acres, this ultra modern facility, features a 10,000 seat baseball stadium which is also the spring training home of the Atlanta Braves. The complex, designed for athletes and fans alike, includes numerous state-of-the-art playing fields and venues serving a wide variety of sports. Disney's Wide World of Sports™ is truly the "ultimate sports destination".



Photographed at Disney's Fort Wilderness Resort and Campground



Photo Courtesy of Disney's Wide World of Sports™ Complex

A Company You Can Trust Since 1964



It all began in 1964. A small company started on its way to becoming one of the most recognized names in the Recreational Vehicle industry. Right away Coachmen started earning the reputation as a leader.

From the beginning it was obvious that Coachmen is a company that cares about the products it produces and the people who enjoy them; always looking for better ways to bring the pure enjoyment

of the RV Lifestyle to more and more families.

In the nearly four decades since Coachmen's modest beginnings, countless companies have come and gone. But Coachmen has stayed the course. From product development to service after the sale, Coachmen has helped set the standards for others to follow. Many of today's product designs, manufacturing techniques and product warranties are a result of Coachmen innovations.

Coachmen—Celebrating 35 Years as "Leader to the Great Outdoors."



for the new millennium

Visit our website at: www.coachmenrv.com

COACHMEN RECREATIONAL VEHICLE COMPANY
P.O. Box 30, Middlebury, IN 46540 • P.O. Box 948, Fitzgerald, GA 31750

JERRY'S TRAILERS & CAMPERS

2601 S. 13th St.
Norfolk, NE 68701
(402) 371-1306

