



Coachmen® RV

The Official RV of Disney's Fort Wilderness Resort and Campground
and Disney's Wide World of Sports™ Complex

Ultimate RVSM Vacation Program FREE!

Two Weeks RV Vacation

Two-Year Structural &
Major Components Warranty

FREE!
Coachmen Caravan
Owner's Club Membership
& Benefits



for the new millennium

Premium Family Time, Coachmen Style

Life's daily demands pull us all in different directions. Too often, those demands put family time on hold. Want to escape? Catalina LITE is the answer!

This is the way leisure time was meant to be. No phones, no yard work, no hassles. Just your family, the open road and all the comforts of home. Catalina LITE is wonderfully affordable – far less expensive than traveling to a hotel and eating out all weekend. Best of all, Catalina LITE can be towed by many of today's popular family vehicles (see our tow vehicle guide for details). Escape from what doesn't matter and enjoy what does!



The 249QB LITE Travel Trailer provides ample living and sleeping quarters. Shown in Fantastic Teal.



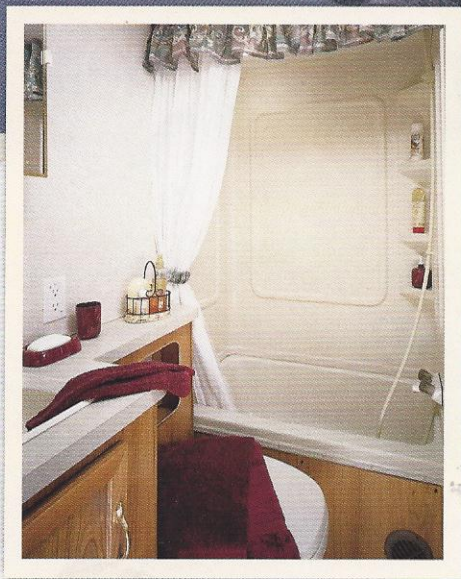
“Coachmen's Catalina LITE Travel Trailers are designed to accommodate today's RV lifestyle by providing the comforts, appointments and luxuries RVers have come to expect, at an affordable price.”

- Coast to Coast Magazine



Golden Cherry Finish Cabinets and the coordinated Blue Dimension decor fabrics combine for a stylish atmosphere in this 259RK Fifth Wheel.

The only thing that doesn't feel like home is Catalina LITE's easy maintenance inside and out! It's designed that way so your leisure time stays leisurely. All you do is pack, hitch, and go! Explore. Relax. Enjoy! Do it all in the best possible way – with the people you love.



Enjoy a roomy shower or bath in the 249QB.

for the new millennium

Catalina LITE, Features Galore!

A complete photo album would be required to fully display the many features and innovations of Catalina LITE Travel Trailers & Fifth Wheels. Here are just a few of the many features available from Coachmen RV.

Decor Selections

Blue Dimension



Fantastic Teal



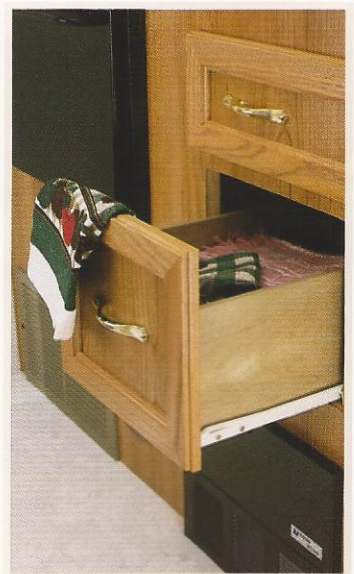
Sable Sand



◀ Dazzling interiors feature skillfully coordinated upholstery and window treatments. Coachmen RV chooses only top-grade fabrics wear-rated as heavy-duty. These fabrics have been tested for durability beyond 15,000 double rubs (in and out action) to simulate heavy usage. An average chair in an American home is subjected to only 3,000 double rubs per year.



Residential quality carpeting with thick pad stands up to dirt and wear.



Residential quality drawer glides and sturdy Techwood drawers provide reliable performance.



Another Coachmen innovation is the functional and handy under-sink silverware and utensil drawer.



A beautiful Filon® fiberglass sidewall option is now available on select LITE floorplans.



LITES feature floorplans which utilize available storage space to the fullest.



The convenient space saver CD player with AM/FM radio is a popular option.

Radial tires are standard on all LITE Travel Trailers. Polyurethane wheel wells help provide an attractive finish. For improved ground clearance on some models, straight axles with 15" tires are optional.

for the new millennium

A Proud History of Quality & Value

Thank you for considering the purchase of a Coachmen RV. We would like to take this opportunity to tell you more about the Coachmen family and show you why you'll be "In Good Company With Coachmen".

In 1964, Coachmen Industries was founded by three brothers, Tom, Keith and Claude Corson. They built the company on principles such as:

- "Practice the Golden Rule"
- "Our Word is our bond"
- "Business goes where it is invited and stays where it is well cared for"
- "Dedicated to the enrichment of your life"

By staying committed to these principles, Coachmen has grown to become one of the largest full-line manufacturers of RVs in the world.

The Corson brothers started Coachmen Industries, Inc. in a 5,000 square foot plant in downtown Middlebury, Indiana. First year production included 12 travel trailers, a single truck camper and 80 truck caps. Since that time Coachmen Companies have produced nearly 600,000 recreational vehicles of all sizes and types.

In 1969, the Company became a public company, and in 1972 Coachmen was first listed on the American Stock Exchange. In January of 1978, the stock was approved for trading on the New York Stock Exchange. In 1984, Coachmen joined the ranks of the prestigious Fortune 500.



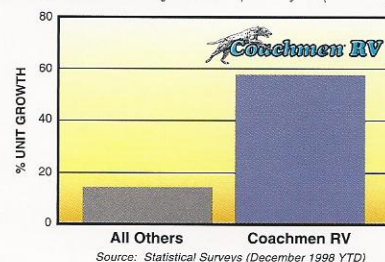
Come visit us at our Complex in Middlebury, Indiana (above) where you can relax at our Visitor's Center and enjoy guided tours of the assembly plants. Also visit us at our facilities in Fitzgerald, Georgia, Goshen, Indiana and Grants Pass, Oregon.

Today Coachmen Industries, Inc. has grown to become a diverse corporation. Aside from the Company's recreational vehicle operations, Coachmen Industries also is the country's largest producer of modular housing. Other markets served by Company divisions include office seating, recreational vehicle furniture and automotive parts and accessories as well as fiberglass and ABS components for recreational vehicles.

Coachmen Recreational Vehicle Company is the largest division and cornerstone of Coachmen Industries, Inc. and continues to be one of the industry's fastest growing companies in terms of sales and market share. Over the past five years, Coachmen RV has outperformed the rest of the industry by over 100%.

Incredible Sales Growth Continues

Coachmen RV cumulative growth for the past five years (1994-1998)



Our main headquarters and primary manufacturing facilities are located in Middlebury, Indiana. We also have manufacturing facilities in Goshen, Indiana, Fitzgerald, Georgia, and Grants Pass, Oregon. In all, we occupy nearly 700,000 square feet of manufacturing space on nearly 120 acres. Over 1,600 dedicated workers will produce approximately 15,000 Coachmen RVs within the year.

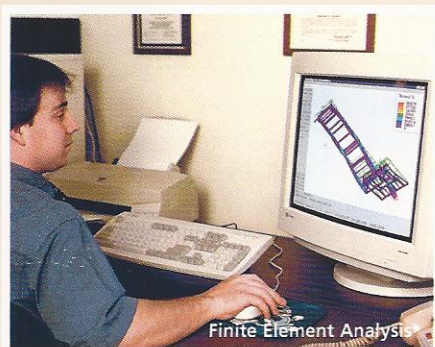
You will find proof of our dedication in our innovative and user-friendly products and our wide range of customer benefits and services. We are driven by a deep concern for your safety, comfort, pride of ownership and pleasure – in short, your Ultimate Satisfaction.

Take a closer look at Coachmen RV Company and see why we're known as the...

"Leader To The Great Outdoors".

Up-Front Design for Long Term Comfort

Founded in 1964, Coachmen is one of the oldest, continuous producing manufacturers of recreational vehicles. A secret of our success is our commitment to the continuous improvement of our products. We have learned that quality must be designed and built into the products, up front. Combining experience and technology, we are able to prevent many problems before they arise, through proper analysis and testing.



Design & Analysis

Unlike most companies, Coachmen uses computerized technology for much more than simple drafting applications.

At Coachmen RV, we utilize and rely on advanced computer technology to design and engineer a reliable and safe vehicle for you and your family. Finite Element Analysis helps evaluate structural integrity of components and systems quickly and efficiently. 3D model simulations and numerous other process and software systems are also used in the design and development of Coachmen recreational vehicles.

Computer weight testing is performed on every new model. Before a floorplan is approved, we know the approximate weights, including dry and loaded, front and rear axle weights and even side-to-side weights which affect towing. After a model is built, the computer analysis is manually verified.

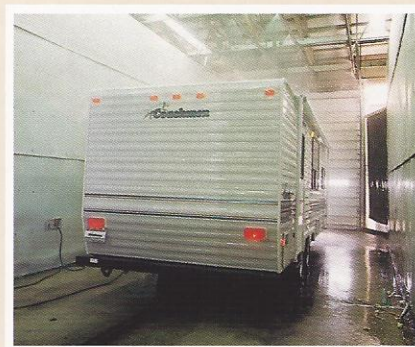


Performance Testing

Coachmen does not want, nor expect, our customers to be the "proving ground." We believe it is our job to adequately test our products, before they reach our customers.

Coachmen subjects its new models to a myriad of stringent tests, before introduction to the customer. Rigorous road tests, sometimes up to 15,000 simulated miles, are performed on actual production units, to verify computer modeling. Studies are made of structural integrity, stress analysis, cabinetry durability, weight loading, vibration analysis and handling.

There can be little doubt that Coachmen has superior quality – by design.



Leak Prevention

Due to the complexity of the product, compounded by road vibration, water leaks can be a problem. Coachmen's quest is to eliminate this frustrating and potentially damaging problem.

Every corner – at the roof, floor and sidewall is wrapped, sealed and secured. All roof and sidewall openings receive framing reinforcement, and are sealed with a non-shrinking, pliable silicone.

To promote water drainage and leak protection, all roofs have tapered rafters.

Finally, every unit we produce is tested for leaks in a high-pressure rain chamber, designed to simulate a driving rain, not just a spring shower.

for the new millennium

A Company You Can Trust

For over 35 years Coachmen RV has been leading the RV Industry in product design, dependability and customer service support. We work very hard in seeking to have our products exceed your expectations. Equally important is the service that we provide during your ownership experience. Whether it be information about your unit, reliable warranties, or industry leading service support . . . Coachmen RV ranks second to no one.



Comprehensive Product Information

Your new Travel Trailer or Fifth Wheel comes with a complete *Owner Information Guide*. This comprehensive package provides a wealth of information about your new unit.

The guide contains everything you ever need to know about operation and maintenance including:

- **Product Warranty Summary Booklet**
- **Owner's Manual**
- **Maintenance Guide**
- **Trouble Shooting Guide**

Manuals for all the major components, appliances and accessories are also included.

Owner's Video

Coachmen provides an owner's video with each new Coachmen RV. This helpful video walks you through a series of informative tips on how to prepare for a trip, use of your unit on the road, setting up your unit at your destination, getting back on the open road and unit storage tips.

Buckstopper Warranty

Your Owner's registration card and our famous Buckstopper Limited Warranty is your passport to worry free travel. Our



Coachmen RV features a complete parts and service center at the Middlebury, Indiana complex. Relax during your visit in our comfortable parts and service lounge.

nationwide network of approximately 350 authorized Coachmen Service Centers stand ready to provide you with courteous, dependable and timely service. Coachmen RV also owns and operates Regional Service Centers, all of which are committed to satisfying your needs.

Two Year Structural & Major Components Warranty

In addition to your One Year Buckstopper Warranty, you can travel with confidence knowing that all of your major structural components such as walls, ceilings, and floors are covered for two years by Coachmen's Extended Structural Limited Warranty. Coachmen products also come with a Two Year Component Manufacturer's

Limited Warranty on select major components and appliances, including TV's, VCR's, water heaters, furnaces, and select kitchen appliances to mention a few.

Transferable Warranty

Your Buckstopper Warranty may be transferred to a subsequent owner for a small registration fee, in the unlikely event you sell your Coachmen RV during the term of your one-year warranty period. This feature enhances the resale value of your Coachmen product.

Additional Service Support

Coachmen also provides a toll free service number for your assistance and convenience, along with a Priority Customer Parts Order program for overnight part shipments in critical repair situations. Coachmen's Service & Parts Department is staffed with trained professionals that are committed to satisfying your needs.

Ultimate Satisfaction – First

Coachmen RV owners regularly receive comprehensive surveys through our Ultimate Satisfaction – First (US1 Program). US1 questionnaires provide us with valuable information regarding our customers' products as well as the purchase and ownership experience. Listening to our customers helps us achieve your...**"Ultimate Satisfaction – First"**.

Enjoy Your Coachmen RV More with International Caravan



Your purchase of a Coachmen recreational vehicle qualifies you for a free, one-year membership in the International Coachmen Caravan, the nation's largest manufacturer sponsored RV club.

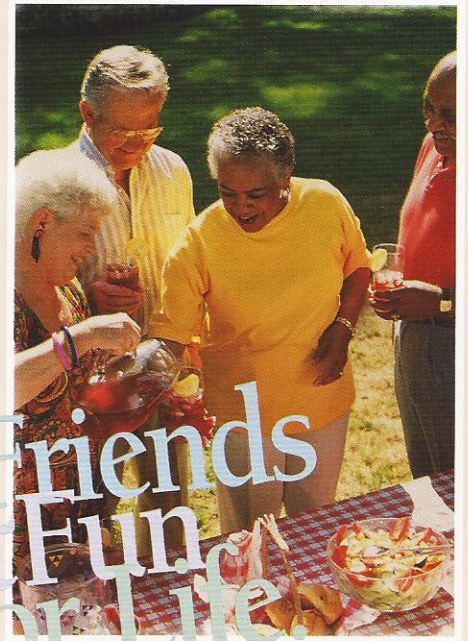
Consisting of over 23,000 member families, the Coachmen Caravan was formed in 1966 to help our owners enjoy RV ownership to the fullest.

With Coachmen, unlimited opportunities exist for you and your family to form lifelong friendships; improve and share your unique talents, skills and crafts; be active in running your club; and exchange ideas, information and helpful hints — all these, plus the many benefits outlined below, are uniquely yours through the International Coachmen Caravan.

Incredible Membership Benefits.

In addition to automatically expanding your circle of friends, your Caravan membership brings you a multitude of benefits:

- ✓ Free \$5,000 Accidental Death and Dismemberment Insurance policy, with additional policies available for \$5 a year.
- ✓ Emergency road service and RV insurance at low rates.
- ✓ Free trip-planning service.
- ✓ 10% Discounts at over 4,000 campgrounds in the U.S. and Canada.
- ✓ Free annual Campground Directory.
- ✓ Hassle-free group travel to popular destinations.
- ✓ Free lost-key return service.
- ✓ Organized campouts, meetings and parties.
- ✓ Free subscription to COACHMEN CAPERS, the club's quarterly magazine.



- ✓ Annual International Rally Week.
- ✓ A Coachmen Caravan MasterCard with no annual fee and low interest.
- ✓ Free I.D. card, Caravan key ring, vehicle decals and I.D. numbers.
- ✓ Discounts on club clothing, accessories, film developing and selected RV publications.

2 Weeks RV Vacation FREE at Premier RV Destinations. Plus FREE Trip Routing Service.



Now you can experience the RV lifestyle at it's very best with Coachmen RV's **Ultimate RV Vacation Program***. Purchase any new Coachmen Class A Motorhome, Class C Mini Motorhome, Travel Trailer or Fifth Wheel and Coachmen RV will provide **2 weeks of free camping** at premier RV destinations across the country.

The Ultimate RV Vacation Program is convenient and easy to use. Coachmen RV has done all the work for you. See your authorized Coachmen RV dealer to obtain our comprehensive Ultimate RV Vacation Booklet. The Booklet provides detailed profiles of each participating resort so all you have to do is choose a location and make your reservation. It's as easy as that! See your nearest Coachmen RV dealer now for all the details of this great new program.

*Certain restrictions apply.

Coachmen RV Invites Public to Tour Facilities

The Coachmen Visitor's Center in Middlebury, Indiana is your starting point for weekday tours of our motorhome, travel trailer and fifth wheel manufacturing plants. Also located at the Visitor's Center is the headquarters of the



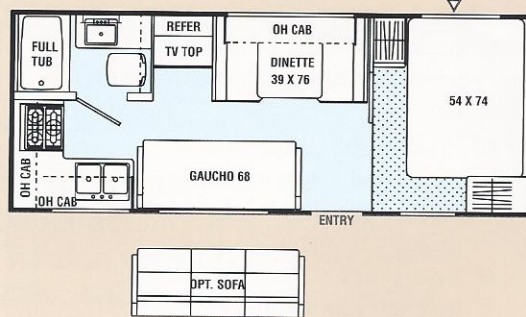
International Coachmen Caravan Owners Club and the Coachmen RV store "Pete's Market", loaded with a large selection of Coachmen RV clothes and merchandise. Please call ahead for tour information and times. The Coachmen RV plants in Fitzgerald, Georgia, Goshen, Indiana and Grants Pass, Oregon produce travel trailers and fifth wheels only. Motorhome production tours are available only at the Middlebury location.

Catalina LITE

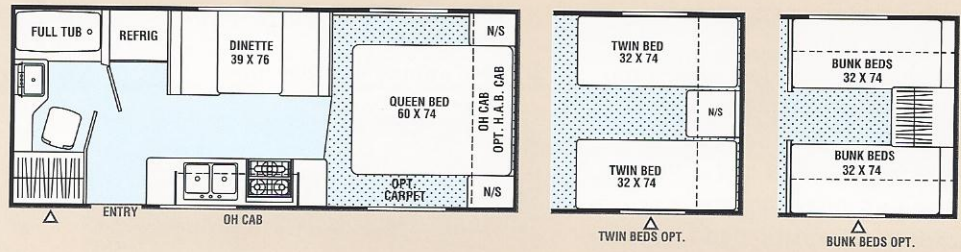
for the new millennium



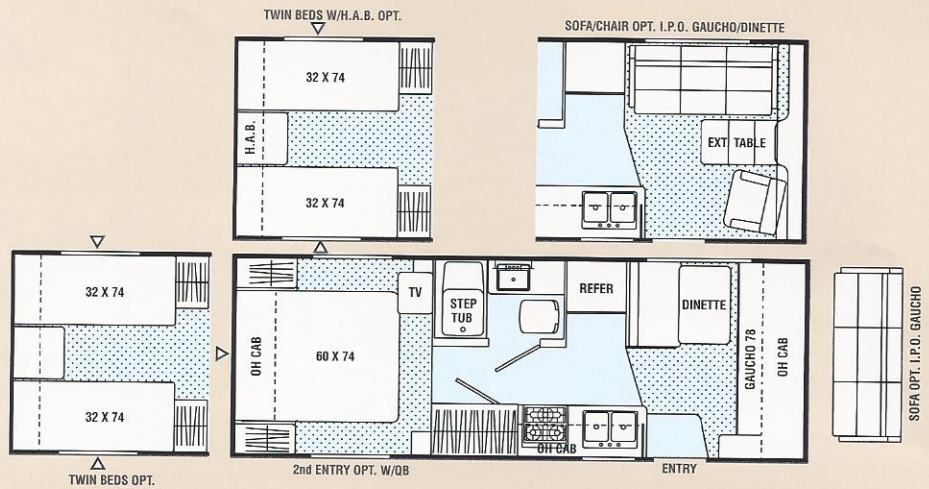
221rk / Rear Kitchen
Base Weight 3541 lbs.



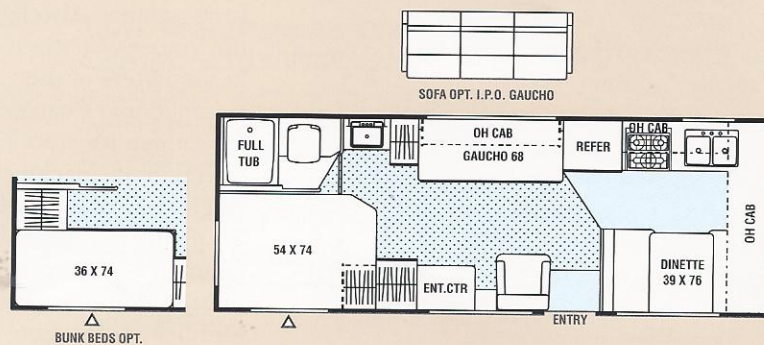
225qb / Queen Bed
Base Weight 3410 lbs.



240mb / Mid Bath
Base Weight 3814 lbs.

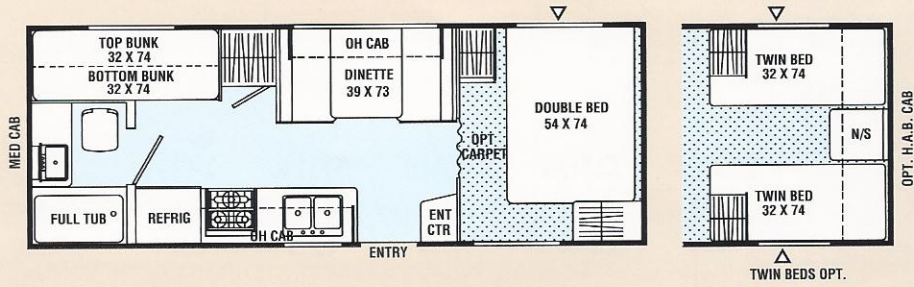


241fk / Queen Bed
Base Weight 3691 lbs.



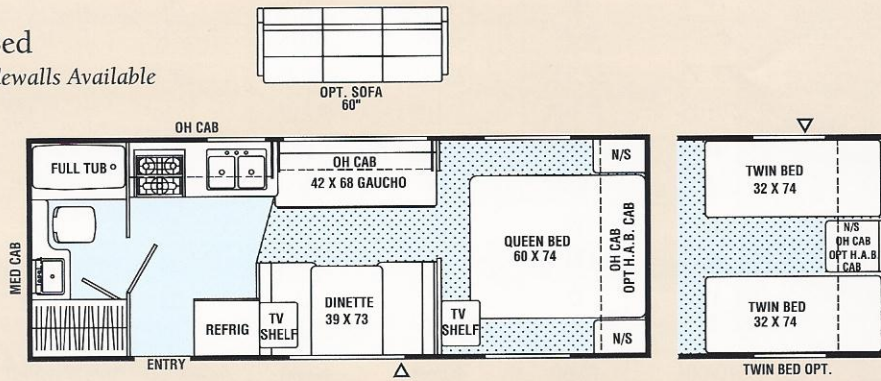
248tb / Queen Bed

Optional Filon® Fiberglass Sidewalls Available
Base Weight 3768 lbs.



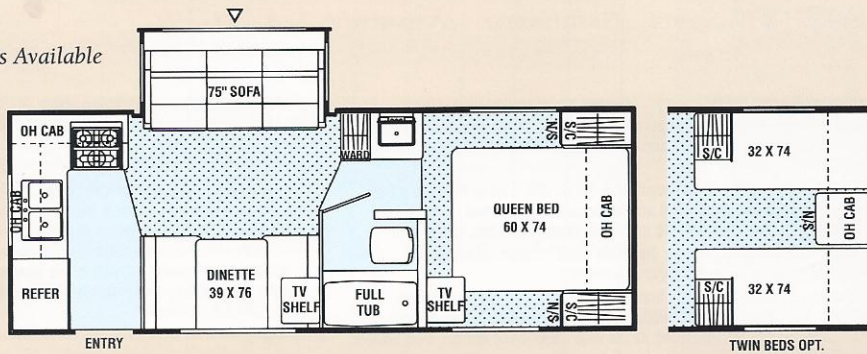
249qb / Queen Bed

Optional Filon® Fiberglass Sidewalls Available
Base Weight 3639 lbs.



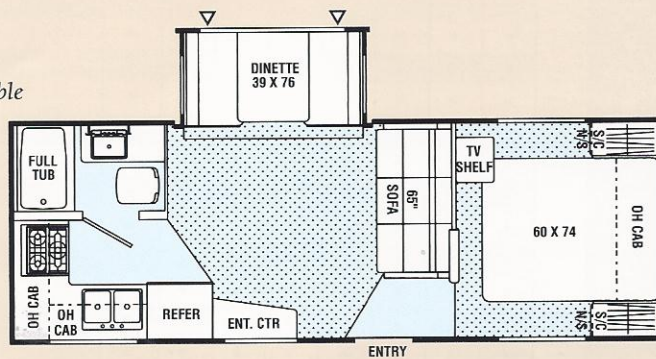
252rks / Queen Bed

Optional Filon® Fiberglass Sidewalls Available
Base Weight 4702 lbs.



264qbs / Queen Bed

Optional Filon® Fiberglass Sidewalls Available
Base Weight 4826 lbs.



■ Indicates Carpeting

△ Indicates Outside Storage Location

for the new millennium

Specifications

	221RK	225QB	240MB	241FK	248TB	249QB	252RKS	264QBS
Base Weight	3,541	3,410	3,814	3,691	3,768	3,639	4,702	4,826
GVWR	4,850	4,780	5,890	6,110	5,880	5,850	7,580	7,550
Carrying Capacity	1,309	1,370	2,076	2,419	2,112	2,211	2,878	2,724
Hitch Weight	450	380	450	670	440	410	580	550
Axle Weight	3,091	3,030	3,364	3,021	3,328	3,229	4,122	4,376
Interior Height	76"	76"	76"	76"	76"	76"	76"	76"
Exterior Height*	8' 8"	8' 8"	8' 8"	8' 8"	8' 8"	8' 8"	9' 8"	9' 8"
Exterior Length	23' 5"	22' 11"	25' 4"	25' 2"	25' 2"	25' 3"	25' 5"	26' 4"
Exterior Width	7' 10"	7' 10"	7' 10"	7' 10"	7' 10"	7' 10"	7' 10"	7' 10"
Hitch Pin Height	16	16	17	17	17	17	21	21
Sleeping Capacity	6	4/5	4/6	6	6/7	6/7	6	6
Fresh Water Capacity (gal.)	32	39	32	32	27	32	39	27
Waste Water Capacity (gal.)	32	33	34	34	33	33	33	32
Grey Water Capacity (gal.)	33	32	32	32	32	32	65	33
Water Heater Capacity	6	6	6	6	6	6	6	6
LP Gas Capacity (lb.)	40/60	40/60	40/60	40/60	40/60	40/60	40/60	40/60
Furnace Rating (x 1,000) B	20	20	25	25	25	25	25	25
Tire Size	●	●	□	□	□	□	△	△

*Add 10" for Roof Air Conditioner ● = ST175/80R13B □ = ST175/80R13C △ = ST205/75R15C

Base Weight: The weight of the unit with no fluids, cargo, optional equipment or accessories.

GVWR (Gross Vehicle Weight Rating): The maximum permissible weight of the unit, including the Base Weight plus all fluids, cargo, optional equipment and accessories. For safety and product performance, do not exceed the GVWR.

Carrying Capacity: The difference between the Base Weight and the GVWR. This is the amount of weight available for all fluids, cargo, optional equipment and accessories. The actual "loaded" weight will depend on the equipped unit and the owner's individual choice of cargo, etc.

Wider Widths: Numerous Coachmen floorplans feature the "wide body" design concept, which gives you significantly enhanced interior living space and innovative floorplans.

In making your purchase decision, you should be aware that a few states restrict access on some or all roads within the state to vehicles with a maximum 96" width, although special road usage permits may be available. Vehicles up to 102" in width are permitted in the vast majority of states. You should

confirm the road usage laws in the states of interest to you before making your purchase decision. If width is of concern to you, we invite you to consider the broad array of other Coachmen models offered in the standard 96" width.

All information contained in this brochure is believed to be accurate at the time of publication. However, during the model year, it may be necessary to make revisions and Coachmen reserves the right to make all such changes without notice, including changes in prices, colors, materials, equipment and specifications, as well as the addition of new models and the discontinuance of models shown in this brochure. Therefore, please consult with your Coachmen dealer and confirm the existence of any materials, design or specifications that are material to your purchase decision.

Standard Features

	221RK	225QB	240MB	241FK	248TB	249QB	252RKS	264QBS
INTERIOR AND DECOR								
Golden Cherry Finish Cabinets	•	•	•	•	•	•	•	•
Linoleum Flooring	•	•	•	•	•	•	•	•
Mini Blinds - Coach	•	•	•	•	•	•	•	•
Mini Blinds - Bedroom (Except w/Bunks)	•	•	•	•	•	•	•	•
Radius Windows	•	•	•	•	•	•	•	•
Gauche	•	•	•	•	•	•	•	•
Dinette	•	•	•	•	•	•	•	•
TV Antenna Ready	•	•	•	•	•	•	•	•
LP Leak Alarm	•	•	•	•	•	•	•	•
Sofa							•	•
GALLEY								
Microwave Ready	•	•	•	•	•	•	•	•
3-Burner Hi Output Range Top w/Pots & Pans Drawer	•	•	•	•	•	•	•	•
Power Range Hood	•	•	•	•	•	•	•	•
Large, Flush Mount, Single Door Refrigerator	•	•	•	•	•	•	•	•
Monitor Panel	•	•	•	•	•	•	•	•
Stainless Steel Sink	•	•	•	•	•	•	•	•
Silverware Drawer		•	•	•	•	•	•	•
SLEEPING								
Queen Bed		•	•				•	•
Corner Double Bed	•			•	•			
Bunk Beds					•			
Deluxe Innerspring Mattress - 312 Coil	•	•	•	•	•	•	•	•
Pillow Shams	•	•	•	•	•	•	•	•
Bedspread	•	•	•	•	•	•	•	•
ELECTRICAL/HEATING/AIR CONDITIONING								
GFI Circuit	•	•	•	•	•	•	•	•
Outside Receptacle GFI	•	•	•	•	•	•	•	•
Patio Light	•	•	•	•	•	•	•	•
LP Light	•	•	•	•	•	•	•	•
Double 20 LB LP Bottles w/Auto Change-Over	•	•	•	•	•	•	•	•
20,000 BTU E.I. Furnace	•							
25,000 BTU E.I. Furnace		•	•	•	•	•	•	•
Pre-Wired & Framed for A/C	•	•	•	•	•	•	•	•
BATH AND WATER								
Marine Toilet	•	•	•	•	•	•	•	•
Power Bath Vent	•	•	•	•	•	•	•	•
6-Gallon Water Heater	•	•	•	•	•	•	•	•
Water Heater By-Pass Valve	•	•	•	•	•	•	•	•
Demand Water Pump	•	•	•	•	•	•	•	•
Decorative Bath Hardware	•	•	•	•	•	•	•	•
Medicine Cabinet	•	•	•	•	•	•	•	•
EXTERIOR/CONSTRUCTION								
Clear Safety Glass Radius Windows	•	•	•	•	•	•	•	•
One-Piece Seamless Aluminum Roof	•	•	•	•	•	•	•	•
Fiberglass Insulation	•	•	•	•	•	•	•	•
Gutter Rail with Awning Rail	•	•	•	•	•	•	•	•
Single Entry Step	•	•	•	•	•	•	•	•
Dead Bolt Lock	•	•	•	•	•	•	•	•
Radial Tires	•	•	•	•	•	•	•	•
Rally Wheels	•	•	•	•	•	•	•	•
Fender Skirts	•	•	•	•	•	•	•	•
One-Piece Polyethylene Wheel Wells	•	•	•	•	•	•	•	•
Break Away Switch	•	•	•	•	•	•	•	•

Optional Features

- Partial Carpet With Pad (Carpet is standard in the Living Room of the 252RKS & 264QBS)
- Twin Beds (225QB, 240MB, 248TB, 249QB, 252RKS)
- Twin Beds with HAB (240MB, 248TB)
- Bunk Beds (225QB, 241FK)
- Front Hide-A-Bed (225QB, 240MB, 248TB, 249QB) (Front Hide-A-Bed w/Twin Beds Option on 248TB)
- Jack Knife Sofa (221RK, 240MB, 241FK, 249QB)
- Swivel Rocker (241FK)
- Residential Style AM/FM CD Stereo
- TV Antenna with Rotor Package
- Cable TV Jack
- Flush Mount, Double Door Refrigerator (Except 221RK)
- 3-Burner (High Output) Range w/Oven
- Microwave Oven
- 6-Gallon E.I. Water Heater
- One-Piece ABS Tub Surround
- Outside Shower
- Front Window w/Stone Guard Awning
- Tinted Safety Glass - Radius Windows
- Second Entrance Door - Rear (240MB) (Except with Twin Beds)
- 13,500 BTU Roof Air Conditioner
- Double 30# LP Bottles w/Auto C/O
- LP Bottle Cover
- Electric Slide-Out Room Mechanism (252RKS, 264QBS)
- Spare Tire Kit - 13" (Except 252RKS, 264QBS) (Not Available w/Straight Axle Option)
- Spare Tire Kit - 15" (Available Only w/Straight Axle Option and 252RKS or 264QBS)
- Retractable Stabilizer Jacks (Std. On 252RKS, 264QBS)
- Straight Axle w/15" Rdl Tires & Dbl Step (std. on 252RKS, 264QBS)
- Rubber Roof
- Awning
- CSA Upfit (Mandatory for all Canadian Provinces)
- Filon® Fiberglass Sidewalls (248TB, 249QB, 252RKS, 264QBS)
- Front Lounge (240MB)

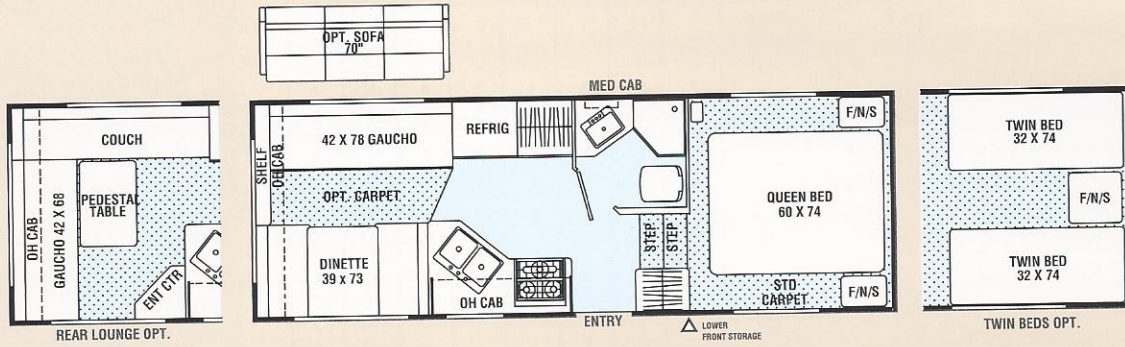
Catalina LITE

for the new millennium



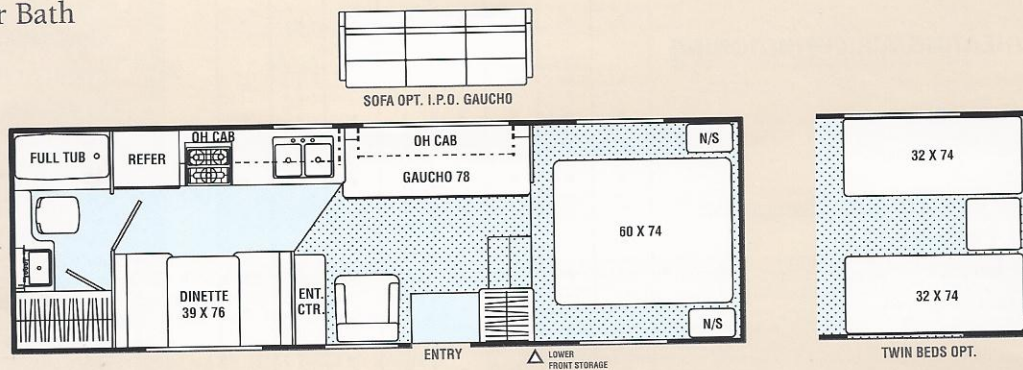
220rl / Rear Lounge

Base Weight 3929 lbs.



250rb / Rear Bath

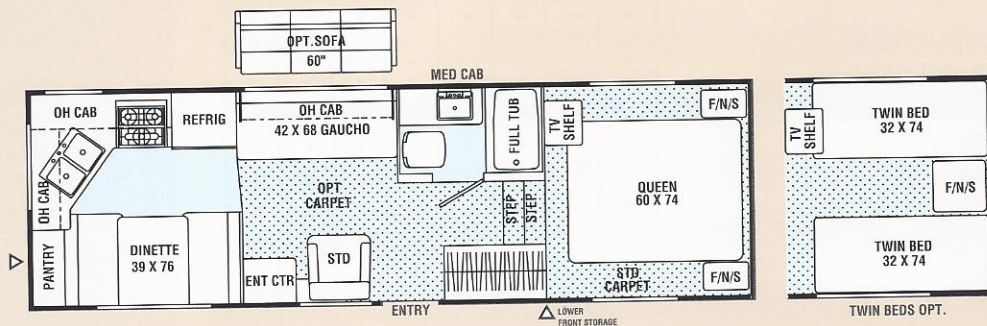
Base Weight 4276 lbs.



259rk / Rear Kitchen

Optional Filon® Fiberglass Sidewalls Available

Base Weight 4356 lbs.



▣ Indicates Carpeting

△ Indicates Outside Storage Location



Specifications

	220RL	250RB	259RK
Base Weight	3,929	4,276	4,356
GVWR	6,390	6,440	6,500
Carrying Capacity	2,461	2,164	2,144
Hitch Weight	790	840	900
Axle Weight	3,139	3,436	3,456
Interior Height	76"	76"	76"
Exterior Height*	9' 1"	9' 1"	9' 1"
Exterior Length	23' 10"	26' 7"	26' 11"
Exterior Width	7' 10"	7' 10"	7' 10"
Hitch Pin Height	43"	43"	43"
Sleeping Capacity	6/5	6	6
Fresh Water Capacity (gal.)	27	39	32
Waste Water Capacity (gal.)	34	33	34
Grey Water Capacity (gal.)	32	32	34
Water Heater Capacity	6	6	6
LP Gas Capacity (lb.)	40	40/60	40/60
Furnace Rating (x 1,000)BTU	25	25	25
Tire Size	ST205/75R15B	ST205/75R15B	ST205/75R15B

*Add 10" for Roof Air Conditioner

Base Weight: The weight of the unit with no fluids, cargo, optional equipment or accessories.

GVWR (Gross Vehicle Weight Rating): The maximum permissible weight of the unit, including the Base Weight plus all fluids, cargo, optional equipment and accessories. For safety and product performance, do not exceed the GVWR.

Carrying Capacity: The difference between the Base Weight and the GVWR. This is the amount of weight available for all fluids, cargo, optional equipment and accessories. The actual "loaded" weight will depend on the equipped unit and the owner's individual choice of cargo, etc.

Wider Widths: Numerous Coachmen floorplans feature the "wide body" design concept, which gives you significantly enhanced interior living space and innovative floorplans.

In making your purchase decision, you should be aware that a few states restrict access on some or all roads within the state to vehicles with a maximum 96" width, although special road usage permits may be available. Vehicles up to 102" in width are permitted in the vast majority of states. You should

confirm the road usage laws in the states of interest to you before making your purchase decision. If width is of concern to you, we invite you to consider the broad array of other Coachmen models offered in the standard 96" width.

All information contained in this brochure is believed to be accurate at the time of publication. However, during the model year, it may be necessary to make revisions and Coachmen reserves the right to make all such changes without notice, including changes in prices, colors, materials, equipment and specifications, as well as the addition of new models and the discontinuance of models shown in this brochure. Therefore, please consult with your Coachmen dealer and confirm the existence of any materials, design or specifications that are material to your purchase decision.

Standard Features

	220RL	250RB	259RK
INTERIOR AND DECOR			
Golden Cherry Finish Cabinets	•	•	•
Carpet - Bedroom	•	•	•
Linoleum Flooring - Kitchen & Living	•	•	•
Mini Blinds - Coach	•	•	•
Mini Blinds - Bedroom	•	•	•
Radius Corner Windows	•	•	•
Swivel Rocker		•	•
Side Dinette	•	•	•
TV Antenna Ready	•	•	•
LP Leak Alarm	•	•	•
GALLEY			
Microwave Ready	•	•	•
3-Burner Hi Output Range Top w/Pots & Pans Drawer	•	•	•
Power/Lighted Range Hood	•	•	•
Large, Flush Mount, Single Door Refrigerator	•	•	•
Monitor Panel	•	•	•
Stainless Steel Sink	•	•	•
Silverware Drawer		•	•
SLEEPING			
Queen Bed	•	•	•
Deluxe Innerspring Mattress - 312 Coil	•	•	•
Pillow Shams	•	•	•
Bedspread	•	•	•
ELECTRICAL/HEATING/AIR CONDITIONING			
GFI Circuit	•	•	•
Outside Receptacle	•	•	•
Patio Light	•	•	•
Hitch Light	•	•	•
Double 20 LB LP Bottles w/Auto Change-Over	•	•	•
25,000 BTU E.I. Furnace	•	•	•
Prewired for Roof Air Conditioning	•	•	•
BATH AND WATER			
Marine Toilet	•	•	•
Power Bath Vent	•	•	•
6-Gallon Water Heater	•	•	•
Water Heater By-Pass Valve	•	•	•
Demand Water Pump	•	•	•
Decorative Bath Hardware	•	•	•
Medicine Cabinet	•	•	•
EXTERIOR/CONSTRUCTION			
Clear Safety Glass Radius Windows	•	•	•
One-Piece Seamless Aluminum Roof	•	•	•
Fiberglass Insulation	•	•	•
Gutter Rail with Awning Channel	•	•	•
Dead Bolt Lock	•	•	•
Straight Axle	•	•	•
15" Radial Tires	•	•	•
Rally Wheels	•	•	•
Fender Skirts	•	•	•
One-Piece Polyethylene Wheel Wells	•	•	•
Break Away Switch	•	•	•

Optional Features

- Partial Carpet With Pad - Coach
- Twin Beds
- Rear Lounge (220RL) (Except on Jack Knife Sofa Option)
- Jack Knife Sofa - Off Door Side
- Residential AM/FM C.D. Stereo
- TV Antenna with Rotor Package
- Cable TV Jack
- Flush Mount, Double Door Refrigerator
- 3-Burner (High Output) Range w/Oven
- Microwave Oven
- 6-Gallon E.I. Water Heater
- One-Piece ABS Tub Surround
- Outside Shower
- Tinted Safety Glass - Radius Windows
- 13,500 BTU Roof Air Conditioner
- Double 30# LP Bottles w/Auto C/O (250RB, 259RK)
- Spare Tire Kit
- Retractable Stabilizer Jacks
- Rubber Roof
- Awning
- CSA Upfit (Mandatory for all Canadian Provinces)
- Filon® Fiberglass Sidewalls (259RK)

1999 Tow Vehicle Guide

The Popular Catalina LITE series of Travel Trailers and Fifth Wheels has been designed with the new generation of tow vehicles in mind. In deciding which Catalina LITE is right for you, you will want to compare its weight shown in the Specification Chart to the towing limits of your tow vehicle. Because of the many variables, the process can be confusing. This Guide is provided for your convenience as a general reference. It lists the 1999 model, engine size and published maximum towing capacity. **PLEASE NOTE: This Guide does not attempt to provide all necessary information such as axle ratios, cooling systems, transmissions and any additional equipment required by the tow vehicle manufacturer to achieve the published maximum towing limits.**

Please be sure to verify your particular tow vehicle manufacturer's specifications. Your Coachmen dealer will be glad to help you with questions.

Tow Vehicle	Engine	Tow Limit (lbs.)	Note
ACURA			
SLX	3.2 V-6	5,000	

AM GENERAL

Hummer (2-passenger)	Diesel	8,510	
Hummer (2-passenger)	Turbodiesel	8,440	

CHEVROLET/GMC

Astro/Safari (AWD)	4.3 V-6A	5,000	(b,f)
Astro/Safari (RWD)	4.3 V-6A	5,500	(b,f)
Blazer/Jimmy	4.3 V-6A	5,500	(a,f)
Silverado/Sierra C/K1500	4.3 V-6M	3,500	(f,k)
C/K1500	4.3 V-6M	4,000	(f,k)
C1500	4.3 V-6A	4,500	(a,f)
C1500	4.3 V-6A	5,000	(b,f)
C1500	4.8 V-8M	5,000	(b,f)
C1500	4.8 V-8A	6,000	(a,f)
C1500	4.8 V-8A	7,000	(b,f)
K1500 4WD	4.8 V-8A	7,500	(c,f)
C1500	5.3 V-8A	7,000	(a,f)
C1500	5.3 V-8A	8,200	(b,f)
K1500 4WD	5.3 V-8A	8,000	(c,f)
C2500 LD**	5.3 V-8A	6,500	(a,f)
C2500 LD	5.3 V-8A	7,500	(b,f)
C2500 LD	5.3 V-8A	8,500	(c,f)
C2500	5.7 V-8	6,500	(b,f)
C2500	5.7 V-8	8,000	(c,f)
K2500 4WD	5.7 V-8	7,500	(c,f)
K2500 4WD	6.5 TD	8,000	(b,c,f)
K2500 4WD	7.4 V-8	8,500	(b,f)
K2500 4WD	7.4 V-8	10,000	(c,f)
C2500 HD	6.0 V-8	8,500	(b,f)
C2500 HD	6.0 V-8	10,500	(c,f)
C2500	6.0 V-8 A/M	10,500	(c,f)
C2500	6.5 TD* M	11,000	(c,f)
C2500	6.5 TD M/A	8,500	(b,c,f,i)
C2500	7.4 V-8 M/A	9,000	(b,e,f,i)
C2500	7.4 V-8 M/A	10,000	(c,e,f,i)
C3500	5.7 V-8 M/A	7,500	(c,f,i)
C3500	5.7 V-8 M/A	9,000	(d,f,i)
K3500 4WD	5.7 V-8 M/A	7,000	(c,f,i)
C3500	7.4 V-8 M/A	10,000	(c/d,f,i)
K3500 4WD	7.4 V-8 M/A	10,000	(c/d,f,i)
C3500	6.5 TD M/A	8,000	(c,f,i)
K3500 4WD	6.5 TD M/A	7,500	(c,f,i)
C3500 Crew Cab	5.7 V-8 M/A	7,000	(c,f,i)
C3500 Crew Cab	5.7 V-8 M/A	8,500	(d,f,i)
K3500 Crew Cab 4WD	5.7 V-8 M/A	6,500	(c,f,i)
K3500 Crew Cab 4WD	5.7 V-8 M/A	8,000	(d,f,i)
C3500 Crew Cab	6.5 TD* M/A	8,000	(c,f,i)
K3500 Crew Cab 4WD	6.5 TD M/A	7,500	(c,f,i)
C3500 Crew Cab	7.4 V-8 M/A	10,000	(c/d,f,i)
K3500 Crew Cab 4WD	7.4 V-8 M/A	10,000	(c/d,f,i)
C3500 HD chas Cab	6.5 TD* M/A	10,000	(f,i,l)
Express/Savana/G1500	4.3 V-6	4,500	(b,f)
Express/Savana/G1500	5.0 V-8	5,000	(a,f)
Express/Savana/G1500	5.7 V-8	6,500	(b,f)
Express/Savana/G2500	4.3 V-6	5,000	(c,f)
Express/Savana/G2500	5.0 V-8	5,000	(a,f)
Express/Savana/G2500/3500	5.7 V-8	7,000	(c,f)
Express/Savana/G2500	6.5 TD*	8,000	(b,f)
Express/Savana/G3500	6.5 TD*	7,500	(c,f)
Express/Savana/G3500	7.4 V-8	10,000	(c,f)

Tow Vehicle	Engine	Tow Limit (lbs.)	Note
S-series/Sonoma	4.3 V-6A	4,500	(f,k)
S-series/Sonoma	4.3 V-6A	5,500	(a,f)
S-series/Sonoma	4.3 V-6A	4,000	(a,f)
S-series/Sonoma	4.3 V-6A	5,500	(a,f,h)
S-series/Sonoma	4.3 V-6M	3,500	(f,k)
C1500 Suburban	5.7 V-8A	6,500	(b,f,h,i)
C1500 Suburban	6.5 TD* A	8,000	(a,f,h,i)
C2500 Suburban	5.7 V-8A	6,000	(b,e,f,h)
C2500 Suburban	5.7 V-8A	7,500	(c,e,f,h)
C2500 Suburban	6.5 TD* A	8,000	(b/c,f,h)
C2500 Suburban	7.4 V-8A	8,500	(b,f,h)
C2500 Suburban	7.4 V-8A	10,000	(c,e,f)
C2500 5th-whl	5.3 V-8A	6,500	(a,e,f,i)
C2500 5th-whl	5.3 V-8A	7,500	(b,e,f,i)
C2500 5th-whl	5.3 V-8A	8,500	(c,e,f,i)
C2500 5th-whl	6.5 TD* M/A	8,500	(b/c,e,f,i)
C2500 5th-whl	7.4 V-8 M/A	9,000	(b,e,f,i)
C2500 5th-whl	7.4 V-8 M/A	11,000	(c,e,f,i)
C2500 HD/5th-whl	6.0 V-8 M/A	7,500	(a,e,f,h,i)
C2500 HD/5th-whl	6.0 V-8 M/A	8,500	(b,e,f,i)
C2500 HD/5th-whl	6.0 V-8 M/A	10,500	(c,e,f,h,i)
C3500 5th-whl	5.7 V-8 M/A	7,500	(b,e,f,i)
C3500 5th-whl	5.7 V-8 M/A	9,000	(d,e,f,i)
C3500 5th-whl	6.5 TD* M/A	8,000	(c,e,f,i)
C3500 5th-whl	7.4 V-8 M/A	10,500	(c,e,f,i)
C3500 5th-whl	7.4 V-8 M/A	12,500	(d,e,f,i)
C3500 5th-whl Crew Cab	5.7 V-8 M/A	7,000	(c,e,f,i)
C3500 5th-whl Crew Cab	5.7 V-8 M/A	8,500	(d,e,f,i)
C3500 5th-whl Crew Cab	6.5 TD* M/A	8,000	(c,e,f,i)
C3500 5th-whl Crew Cab	7.4 V-8 M/A	10,500	(c,e,f,i)
C3500 5th-whl Crew Cab	7.4 V-8 M/A	12,500	(d,e,f,i)
C3500 5th-whl chas cab	6.5 TD* M/A	10,000	(e,f,i,l)
C3500 5th-whl chas cab	6.5 TD* M/A	12,000	(e,f,i,l)
G10 van	4.3 V-6A	4,500	(b,e,f,i)
G10 van	5.0 V-8A	5,000	(a,e,f,i)
G10 van	5.7 V-8A	6,500	(b,e,f,i)
G20 van	5.7 V-8A	5,500	(a/b,e,f,i)
G20 van	6.5 TD* A	8,000	(b/c,e,f,i)
G30 van	5.7 V-8A	5,500	(a,e,f,i)
G30 van	6.5 TD* A	7,500	(b/c,e,f,i)
G30 van	7.4 V-8A	6,500	(a,e,f,i)
G30 van	7.4 V-8A	8,000	(b,e,f,i)
G30 van	7.4 V-8A	10,000	(c,e,f,i)
M10 van	4.3 V-6	4,500	(e,f,i,l)
M10 van	4.3 V-6	5,000	(a,e,f,i)
M10 van	4.3 V-6	5,500	(b,e,f,i)
L10 van	4.3 V-6	5,000	(b,e,f,i)
Tahoe/Yukon	5.7 V-8	7,000	(b,e,h)
Tahoe/Yukon (4WD)	6.5 TD*	7,000	(b,f)
Venture	3.4 V-6	3,500	(f)

NOTE: Tow ratings for Chevrolet and GMC trucks may differ slightly; see your dealer for details. Tow ratings over 10,000 pounds are only for fifth-wheel trailers. *TD means turbodiesel. **LD means light duty. ***HD means heavy duty. (A)=Automatic transmission (M)=Manual transmission (a) Requires 3.42:1 axle ratio. (b) Requires 3.73:1 axle ratio. (c) Requires 4.10:1 axle ratio. (d) Requires 4.56:1 axle ratio. (e) Requires heavy-duty cooling equipment. (f) Requires special trailer-towing equipment. (g) Automatic transmission may be required. See dealer for details. (h) Tow rating for 4WD version is lower. (i) Requires optional trailer-towing package. (j) Crew cab has a 500-pound lower rating. (k) Requires 3.08:1 axle ratio. (l) Requires 4.63:1 or 5.13:1 axle ratio. (m) Requires 3.23:1 axle

Tow Vehicle	Engine	Tow Limit (lbs.)	Note
CHRYSLER			
Town & Country	3.3, 3.8 V-6	3,500	(a,b)

(a) Requires trailer-towing package. (b) Requires Class II load-equalizing hitch.

DODGE

Caravan	3.3, 3.8 V-6	3,500	(j)
Dakota	3.9 V-6	4,400	(d,g)
Dakota	3.9 V-6	5,100	(b,d)
Dakota	3.9 V-6	5,500	(a,b)
Dakota	5.2 V-8	5,900	(d,g)
Dakota	5.2 V-8	6,900	(a,g)
Dakota	5.2 V-8	8,500	(a,b)
Dakota (4WD)	3.9 V-6	4,900	(a,g)
Dakota (4WD)	3.9 V-6	5,200	(a,b)
Dakota (4WD)	5.2 V-8	5,500	(d,g)
Dakota (4WD)	5.2 V-8	6,500	(a,g)
Dakota (4WD)	5.2 V-8	6,400	(a,b)
Dakota Club Cab	3.9 V-6	4,800	(b,f)
Dakota Club Cab	3.9 V-6	4,300	(d,g)
Dakota Club Cab	5.2 V-8	5,700	(d,g)
Dakota Club Cab	5.2 V-8	6,700	(a,g)
Dakota Club Cab	5.2 V-8	6,300	(a,b)
Dakota Club Cab	5.9 V-8	8,300	(a,b)
Dakota Club Cab 4WD	3.9 V-6	5,000	(b,f)
Dakota Club Cab 4WD	5.2 V-8	6,400	(a,g)
Dakota Club Cab 4WD	3.9 V-6	5,000	(a,b)
Dakota Club Cab 4WD	5.2 V-8	5,400	(d,g)
Dakota Club Cab 4WD	5.2 V-8	6,200	(a,b)
Durango	3.9 V-6	4,700	(a,n)
Durango	5.2 V-8	4,600	(d,n)
Durango	5.2 V-8	5,900	(a,n)
Durango	5.9 V-8	5,900	(d,n)
Durango	5.9 V-8	7,400	(a,n)
Ram 1500	3.9 V-6	3,600	(d,g)
Ram 1500	5.2/5.9 V-8	8,000	(b,d,h,k)
Ram 2500	5.9 V-8	9,100	(b/g,f,k)
Ram 2500	5.9 TD*	14,300	(f,i,k,m)
Ram 2500	5.9 TD	10,300	(b,d,k)
Ram 2500	5.9 TD	12,300	(b,f,k)
Ram 2500	8.0 V-10	13,500	(b/g,f)
Ram 3500	5.9 V-8	9,500	(f/b/g,k)
Ram 3500	5.9 TD	14,000	(f,i,k,m)
Ram 3500	5.9 TD	10,900	(b,d,k)
Ram 3500	5.9 TD	12,000	(b,f,k)
Ram 3500	8.0 V-10	13,400	(b/g,f,k)
Ram 1500 4WD	5.2 V-8	4,800	(d,g,k)
Ram 1500 4WD	5.2 V-8	5,300	(a,g,k)
Ram 1500 4WD	5.2 V-8	7,800	(a/d,b,k)
Ram 2500 4WD	5.9 V-8	7,300	(a/d,b,k)
Ram 2500 4WD	5.9 V-8	8,800	(b/g,f,k)
Ram 2500 4WD	5.9 TD	13,900	(d/e,k,m)
Ram 2500 4WD	5.9 TD	9,900	(b,f,k)
Ram 2500 4WD	5.9 TD	11,900	(b,e,k)
Ram 2500 4WD	8.0 V-10	13,200	(d/e,b/g,k)
Ram 3500 4WD	5.9 V-8	9,100	(b/g,d/e,k)
Ram 3500 4WD	5.9 TD	13,600	(d/e,k,m)
Ram 3500 4WD	5.9 TD	9,600	(b,d,k)
Ram 3500 4WD	5.9 TD	11,600	(b,e,k)
Ram 3500 4WD	8.0 V-10	13,000	(b/g,d/e,k)
Ram 2500 cab&chassis	5.9 V-8	8,800	(b/g,m,d/e)
Ram 2500 cab&chassis	5.9 TD	8,800	(b,d/e)
Ram 2500 cab&chassis	8.0 V-10	8,800	(b/g,d/e)

1999 Tow Vehicle Guide CONTINUED

Tow Vehicle	Engine	Tow Limit (lbs.)	Note
Dodge Continued			
Ram 3500 cab&chassis	5.9 V-8	11,000	(b/g,d/e)
Ram 3500 cab&chassis	5.9 TD	11,000	(d/e,b/m)
Ram 3500 cab&chassis	8.0 V-10	11,000	(b/g,d/e)
Ram van 1500	3.9 V-6	4,100	(c,d)
Ram van 1500	5.2 V-8	5,400	(b,d)
Ram van 1500	5.2 V-8	5,900	(a,b)
Ram van 1500	5.2 V-8	6,600	(b,d)
Ram van 1500	5.2 V-8	7,600	(a,b)
Ram van 1500	5.9 V-8	8,100	(a,b)
Ram van 2500	5.2 V-8	7,900	(b,e)
Ram van 2500	5.9 V-8	7,900	(a,b)
Ram van 2500	5.9 V-8	8,400	(b,e)
Ram van 3500	5.2 V-8	7,900	(b,e)
Ram van 3500	5.9 V-8	7,400	(a,b)
Ram van 3500	5.9 V-8	7,900	(b,e)
Ram Wagon B1500	3.9 V-6	4,000	(c,d)
Ram Wagon B1500	5.2 V-8	5,500	(b,e)
Ram Wagon B2500	5.2 V-8	7,100	(a,b)
Ram Wagon B2500	5.2 V-8	7,600	(b,e)
Ram Wagon B2500	5.9 V-8	7,600	(b,d)
Ram Wagon B2500	5.9 V-8	8,100	(a,b)
Ram Wagon B3500	5.2 V-8	7,200	(b,e)
Ram Wagon B3500	5.9 V-8	7,100	(b,d)
Ram Wagon B3500	5.9 V-8	7,600	(a,b)

NOTE: Sports models are not recommended for towing. Dodge rates its cars based on towing trailers on fairly level roads in moderate weather conditions. Trailer ratings over 10,000 pounds are for fifth-wheels. *TD means turbodiesel.

- (a) Requires 3.9:1 axle ratio. (b) Requires four-speed automatic overdrive transmission.
- (c) Requires three-speed automatic transmission. (d) Requires 3.5/3.9:1 axle ratio.
- (e) Requires 4.09/4.10:1 axle ratio. (f) Requires either a 3.5/3.9/4.09/4.10:1 axle ratio.
- (g) With five-speed manual transmission.
- (h) Towing not recommended with 3.21:1 axle ratio. (i) California GCWR may differ.
- (j) Requires towing package. (k) Club Cab rating slightly lower.
- (l) Requires 3.21:1 axle ratio. (m) Requires manual 5/6-spd transmission.
- (n) 4WD not listed by factory at presstime.

Tow Vehicle	Engine	Tow Limit (lbs.)	Note
FORD			
Econoline van E-250	4.2 V-6	5,200	(a,d)
Econoline van E-250	4.2 V-6	5,700	(a,e)
Econoline van E-150	4.6 V-8	6,600	(a,c)
Econoline wagon E-150	4.6 V-8	6,100	(a,c)
Econoline van E-150	5.4 V-8	6,900	(a,c)
Econoline van E-250	5.4 V-8	7,500	(a,d)
Econoline van E-350 SD	5.4 V-8	7,500	(a,e)
Econoline wagon E-150	5.4 V-8	6,500	(a,c)
Econoline wagon E-350 SD	5.4 V-8	7,000	(a,e)
Econoline van E-250	5.4 V-8 NGV	4,500	(a,d,r)
Econoline van E-350 SD	5.4 V-8 NGV	5,000	(a,e,r)
Econoline van E-350 SD	6.8 V-10	9,300	(a,e)
Econoline van E-350 SD	6.8 V-10	10,000	(a,e)
Econoline wagon E-350 SD	6.8 V-10	8,900	(a,d)
Econoline wagon E-350 SD	6.8 V-10	10,000	(a,e)
Econoline van E-350 SD	7.3 TD**	10,000	(a,c/e)
Econoline van E-350 SD extd	7.3 TD**	9,800	(a,c)
Econoline wagon E-350 SD	7.3 TD**	9,500	(a,c)
Econoline wagon E-350 SD extd	7.3 TD**	9,200	(a,c)
Econoline van/wagon E-350 SD	7.3 TD**	10,000	(a,e)
Expedition	4.6 V-8	5,900	(a,b)
Expedition (4WD)	4.6 V-8	6,000	(a,k)
Expedition (4WD)	4.6 V-8	5,500	(a,m)
Expedition	5.4 V-8	6,800	(a,b)
Expedition (4WD)	5.4 V-8	6,400	(a,b)
Expedition	5.4 V-8	8,300	(a,d)
Expedition (4WD)	5.4 V-8	7,900	(a,d)
Expedition (4WD)	5.4 V-8	7,400	(a,d,m)
Explorer 2Dr	4.0 V-6	5,120	(a,d)
Explorer 2Dr (4WD)	4.0 V-6	4,900	(a,d/e)
Explorer 4Dr	4.0 V-6	5,400	(a,d/e)

Tow Vehicle	Engine	Tow Limit (lbs.)	Note
Explorer 4Dr (4WD)	4.0 V-6	5,160	(a,d)
Explorer 2Dr	SOHC 4.0 V-6	4,500	(a,c)
Explorer 2Dr (4WD)	SOHC 4.0 V-6	4,380	(a,c)
Explorer 4Dr	SOHC 4.0 V-6	4,500	(a,c)
Explorer 2Dr	SOHC 4.0 V-6	5,100	(a,d)
Explorer 2Dr (4WD)	SOHC 4.0 V-6	4,880	(a,d/e)
Explorer 4Dr	SOHC 4.0 V-6	5,900	(a,d/e)
Explorer 4Dr (4WD)	SOHC 4.0 V-6	5,680	(a,d/e)
Explorer 4Dr	5.0 V-8	6,740	(a,d)
Explorer 4Dr (4WD)	5.0 V-8	6,520	(a,d)
F-150	4.2 V-6	4,800	(a,b)
F-150	4.2 V-6	5,800	(a,c,g)
F-150 (4WD)	4.2 V-6	5,400	(a,c,g)
F-150 SuperCab	4.2 V-6	4,500	(a,b)
F-150 SuperCab	4.2 V-6	5,500	(a,c,g)
F-150	4.6 V-8	5,800	(a,c)
F-150 (4WD)	4.2 V-6	5,400	(a,c)
F-150 SuperCab	4.2 V-6	5,500	(a,c)
F-150	4.6 V-8	5,600	(a,c)
F-150	4.6 V-8	7,300	(a,c,g,k)
F-150 SuperCab	4.6 V-8	5,400	(a,c)
F-150 SuperCab	4.6 V-8	6,300	(a,c,g,k)
F-150 SuperCab (4WD)	4.6 V-8	6,700	(a,c,g,k)
F-150 SuperCab (4WD)	4.6 V-8	6,200	(a,c,g,m)
F-150	4.6 V-8	7,200	(a,c,k)
F-150 4WD	4.6 V-8	6,800	(a,c,k)
F-150 4WD	4.6 V-8	6,300	(a,c,g,m)
F-150	5.4 V-8	6,600	(a,c)
F-150	5.4 V-8	7,800	(a,c,g)
F-150 4WD	5.4 V-8	6,400	(a,c,d,g)
F-150 SuperCab	5.4 V-8	8,000	(a,c)
F-150 SuperCab	5.4 V-8	6,600	(a,c,g)
F-150 SuperCab 4WD	5.4 V-8	7,700	(a,c)
F-150 SuperCab 4WD	5.4 V-8	7,600	(a,d,g)
F-150 SuperCab 4WD	5.4 V-8	7,600	(a,d)
F-250	4.6 V-8	5,800	(a,b)
F-250 SuperCab	4.6 V-8	5,700	(a,b)
F-250	4.6 V-8	7,300	(a,d,g)
F-250 (4WD)	4.6 V-8	7,000	(a,d)
F-250 SuperCab	4.6 V-8	7,200	(a,d,g)
F-250 SuperCab 4WD	4.6 V-8	6,800	(a,d,g)
F-250	5.4 V-8	7,200	(a,b)
F-250	5.4 V-8	8,700	(a,d,g)
F-250 4WD	5.4 V-8	6,900	(a,b)
F-250 4WD SD***	5.4 V-8	7,700	(a,d,g)
F-250 4WD SD***	5.4 V-8	9,200	(a,e,g)
F-250 4WD	5.4 V-8	8,300	(a,d,g)
F-250 SuperCab	5.4 V-8	7,100	(a,b)
F-250 SuperCab SD	5.4 V-8	7,800	(a,d,g)
F-250 SuperCab SD	5.4 V-8	9,300	(a,e,g)
F-250 SuperCab	5.4 V-8	8,600	(a,d,g)
F-250 SuperCab 4WD	5.4 V-8	6,700	(a,b)
F-250 SuperCab 4WD	5.4 V-8	8,000	(a,d)
F-250 SuperCab 4WD SD	5.4 V-8	7,400	(a,d,g)
F-250 SuperCab 4WD SD	5.4 V-8	8,900	(a,e,g)
F-250	5.4 V-8	8,700	(a,d)
F-250 SD	5.4 V-8	9,700	(a,e,g)
F-250 SD	5.4 V-8	8,200	(a,d,g)
F-250	5.4 V-8 NGV	5,900	(a,d,r)
F-250 SD	5.4 V-8	8,200	(a,d)
F-250 4WD SD	5.4 V-8	7,700	(a,d)
F-250 SuperCab SD	5.4 V-8	7,800	(a,d)
F-250 SuperCab 4WD SD	5.4 V-8	7,400	(a,d)
F-250 crew cab SD	5.4 V-8	7,500	(a,d,g)
F-250 crew cab 4WD SD	5.4 V-8	7,100	(a,d,g)
F-250 SD	5.4 V-8	9,700	(a,e)
F-250 4WD SD	5.4 V-8	9,200	(a,e)
F-250 SuperCab SD	5.4 V-8	9,300	(a,e)
F-250 SuperCab 4WD SD	5.4 V-8	8,900	(a,e)

Tow Vehicle	Engine	Tow Limit (lbs.)	Note
F-250 crew cab SD	5.4 V-8	9,000	(a,e,g)
F-250 crew cab 4WD SD	5.4 V-8	8,600	(a,e)
F-250 crew cab 4WD SD	5.4 V-8	7,100	(a,d,g)
F-250 crew cab 4WD SD	5.4 V-8	8,600	(a,e,g)
F-250 SD	6.8 V-10	10,000	(a,d/e)
F-250 SD	6.8 V-10	11,600	(a,d,g)
F-250 SD	6.8 V-10	14,600	(a,g,o)
F-250 4WD SD	6.8 V-10	11,100	(a,d,g)
F-250 4WD SD	6.8 V-10	14,100	(a,e,g)
F-250 SuperCab SD	6.8 V-10	11,300	(a,d,g)
F-250 SuperCab SD	6.8 V-10	14,300	(a,g,o)
F-250 SuperCab 4WD SD	6.8 V-10	10,800	(a,d,g)
F-250 SuperCab 4WD SD	6.8 V-10	13,800	(a,g,o)
F-250 crew cab SD	6.8 V-10	11,000	(a,d,g)
F-250 crew cab SD	6.8 V-10	14,000	(a,g,o)
F-250 crew cab 4WD SD	6.8 V-10	10,500	(a,d,g)
F-250 crew cab 4WD SD	6.8 V-10	13,500	(a,g,o)
F-250 SD	7.3 TD**	10,000	(a,d/e)
F-250 SD	7.3 TD	14,200	(a,d,g)
F-250 4WD SD	7.3 TD	13,700	(a,d,g)
F-250 SuperCab SD	7.3 TD	13,800	(a,d,g)
F-250 SuperCab 4WD SD	7.3 TD	13,400	(a,d,g)
F-250 crew cab SD	7.3 TD	13,500	(a,d,g)
F-250 crew cab 4WD SD	7.3 TD	13,100	(a,d,g)
F-350 SD SRW*	5.4 V-8	8,200	(a,d,g)
F-350 SD SRW	5.4 V-8	9,700	(a,e,g)
F-350 SD DRW	5.4 V-8	9,400	(a,e,g)
F-350 4WD SD SRW	5.4 V-8	9,200	(a,e,g)
F-350 4WD SD DRW	5.4 V-8	9,000	(a,e,g)
F-350 SuperCab SD SRW	5.4 V-8	9,300	(a,e,g)
F-350 SuperCab SD DRW	5.4 V-8	9,100	(a,e,g)
F-350 SuperCab 4WD SD SRW	5.4 V-8	8,900	(a,e,g)
F-350 SuperCab 4WD SD DRW	5.4 V-8	8,800	(a,e,g)
F-350 crew cab SD SRW	5.4 V-8	9,000	(a,e,g)
F-350 crew cab SD DRW	5.4 V-8	8,800	(a,e,g)
F-350 crew cab 4WD SD SRW	5.4 V-8	8,600	(a,e,g)
F-350 crew cab 4WD SD DRW	5.4 V-8	8,400	(a,e,g)
F-350 reg chas cab SD SRW	5.4 V-8	8,900	(a,e,g)
F-350 reg chas cab SD DRW	5.4 V-8	8,500	(a,e,g)
F-350 reg chas cab 4WD SD DRW	5.4 V-8	8,100	(a,e,g)
F-350 Super Chas Cab SD SRW	5.4 V-8	8,500	(a,e,g)
F-350 Super Chas Cab SD DRW	5.4 V-8	8,300	(a,e,g)
F-350 crew chas cab SD SRW	5.4 V-8	8,200	(a,e,g)
F-350 crew chas cab SD DRW	5.4 V-8	8,000	(a,e,g)
F-350 crew chas cab 4WD SD DRW	5.4 V-8	7,600	(a,e,g)
F-350 SD SRW	6.8 V-10	11,600	(a,d,g)
F-350 SD SRW	6.8 V-10	14,600	(a,g,o)
F-350 SD DRW	6.8 V-10	11,300	(a,d,g)
F-350 SD DRW	6.8 V-10	14,300	(a,g,o)
F-350 4WD SD SRW	6.8 V-10	11,100	(a,d,g)
F-350 4WD SD SRW	6.8 V-10	14,100	(a,g,o)
F-350 4WD SD DRW	6.8 V-10	10,800	(a,d,g)
F-350 4WD SD DRW	6.8 V-10	13,800	(a,g,o)
F-350 reg chas cab SD SRW	6.8 V-10	10,800	(a,d,g)
F-350 reg chas cab SD DRW	6.8 V-10	13,800	(a,g,o)
F-350 reg chas cab 4WD SD SRW	6.8 V-10	10,300	(a,d,g)
F-350 reg chas cab 4WD SD DRW	6.8 V-10	13,300	(a,g,o)
F-350 reg chas cab SD DRW	6.8 V-10	10,400	(a,d,g)
F-350 reg chas cab SD DRW	6.8 V-10	13,400	(a,g,o)
F-350 reg chas cab 4WD SD DRW	6.8 V-10	9,900	(a,d,g)
F-350 reg chas cab 4WD SD DRW	6.8 V-10	12,900	(a,g,o)
F-350 SuperCab LD	6.8 V-10	10,000	(a,d/e)
F-350 SuperCab SD SRW	6.8 V-10	11,200	(a,d,g)
F-350 SuperCab SD SRW	6.8 V-10	14,200	(a,g,o)
F-350 SuperCab SD DRW	6.8 V-10	10,900	(a,d,g)
F-350 SuperCab SD DRW	6.8 V-10	13,900	(a,g,o)
F-350 SuperCab 4WD SD SRW	6.8 V-10	10,800	(a,d,g)
F-350 SuperCab 4WD SD SRW	6.8 V-10	13,800	(a,g,o)
F-350 SuperCab 4WD SD DRW	6.8 V-10	10,600	(a,d,g)

Tow Vehicle	Engine	Tow Limit (lbs.)	Note
F-350 SuperCab 4WD SD DRW	6.8 V-10	13,600	(a,g,o)
F-350 SuperChasCab SD SRW	6.8 V-10	10,400	(a,d,g)
F-350 SuperChasCab SD SRW	6.8 V-10	13,400	(a,g,o)
F-350 SuperChasCab 4WD SD SRW	6.8 V-10	10,000	(a,d,g)
F-350 SuperChasCab 4WD SD SRW	6.8 V-10	13,000	(a,d,g)
F-350 SuperChasCab SD SRW	6.8 V-10	10,100	(a,d,g)
F-350 SuperChasCab SD DRW	6.8 V-10	13,100	(a,g,o)
F-350 SuperChasCab 4WD SD DRW	6.8 V-10	9,700	(a,d,g)
F-350 SuperChasCab 4WD SD DRW	6.8 V-10	12,700	(a,g,o)
F-350 crew cab SD SRW	6.8 V-10	10,900	(a,d,g)
F-350 crew cab SD SRW	6.8 V-10	13,900	(a,g,o)
F-350 crew cab SD DRW	6.8 V-10	10,600	(a,d,g)
F-350 crew cab SD DRW	6.8 V-10	13,600	(a,g,o)
F-350 crew cab 4WD SD SRW	6.8 V-10	10,500	(a,d,g)
F-350 crew cab 4WD SD SRW	6.8 V-10	13,500	(a,g,o)
F-350 crew cab 4WD SD DRW	6.8 V-10	10,200	(a,d,g)
F-350 crew cab 4WD SD DRW	6.8 V-10	13,200	(a,g,o)
F-350 crew chas cab SD SRW	6.8 V-10	10,100	(a,d,g)
F-350 crew chas cab SD SRW	6.8 V-10	13,100	(a,g,o)
F-350 crew chas cab 4WD SD SRW	6.8 V-10	9,700	(a,d,g)
F-350 crew chas cab 4WD SD SRW	6.8 V-10	12,700	(a,g,o)
F-350 crew chas cab SD DRW	6.8 V-10	9,800	(a,d,g)
F-350 crew cab SD DRW	6.8 V-10	12,800	(a,g,o)
F-350 crew chas cab 4WD SD DRW	6.8 V-10	9,400	(a,d,g)
F-350 crew chas cab 4WD SD DRW	6.8 V-10	12,400	(a,g,o)
F-450 crew chas cab SD DRW	6.8 V-10	16,800	(a,g,p)
F-450 crew chas cab SD DRW	6.8 V-10	18,800	(a,g,q)
F-450 crew chas cab 4WD SD DRW	6.8 V-10	16,400	(a,g,p)
F-450 crew chas cab 4WD SD DRW	6.8 V-10	18,400	(a,g,q)
F-450 crew chas cab SD DRW	6.8 V-10	16,200	(a,g,p)
F-450 crew chas cab SD DRW	6.8 V-10	18,200	(a,g,q)
F-450 crew chas cab 4WD SD DRW	6.8 V-10	15,800	(a,g,p)
F-450 crew chas cab 4WD SD DRW	6.8 V-10	17,800	(a,g,q)
F-550 reg chas cab SD DRW	6.8 V-10	16,700	(a,g,p)
F-550 reg chas cab SD DRW	6.8 V-10	18,700	(a,g,q)
F-550 reg chas cab 4WD SD DRW	6.8 V-10	16,400	(a,g,p)
F-550 reg chas cab 4WD SD DRW	6.8 V-10	18,400	(a,g,q)
F-550 crew chas cab 4WD SD DRW	6.8 V-10	16,100	(a,g,p)
F-550 crew chas cab SD DRW	6.8 V-10	18,100	(a,g,q)
F-550 crew chas cab 4WD SD DRW	6.8 V-10	15,800	(a,g,p)
F-550 crew chas cab 4WD SD DRW	6.8 V-10	17,800	(a,g,q)
F-350 SuperCab LD	7.3 TD	10,000	(a,d,e)
F-350 SD SRW	7.3 TD	14,100	(a,d,g)
F-350 SD DRW	7.3 TD	13,800	(a,d,e,g)
F-350 4WD SD SRW	7.3 TD	13,700	(a,d,g)
F-350 4WD SD DRW	7.3 TD	13,400	(a,d,e,g)
F-350 SD SRW	7.3 TD	13,300	(a,d,g)
F-350 4WD SD SRW	7.3 TD	12,900	(a,d,g)
F-350 SD DRW	7.3 TD	12,900	(a,d,e,g)
F-350 4WD SD DRW	7.3 TD	12,500	(a,d,e,g)
F-450 SD DRW	7.3 TD	18,300	(a,g,p)
F-450 4WD SD DRW	7.3 TD	18,000	(a,g,p)
F-550 SD DRW	7.3 TD	18,300	(a,g,p)
F-550 4WD SD DRW	7.3 TD	17,900	(a,g,p)
F-350 SuperCab SD DRW	7.3 TD	13,500	(a,d,e,g)
F-350 SuperCab 4WD SD SRW	7.3 TD	13,400	(a,d,g)
F-350 SuperCab 4WD SD DRW	7.3 TD	13,200	(a,d,e,g)
F-350 SuperChasCab SD SRW	7.3 TD	13,000	(a,d,g)
F-350 SuperChasCab 4WD SD SRW	7.3 TD	12,600	(a,d,g)
F-350 SuperChasCab SD DRW	7.3 TD	12,700	(a,d,e,g)
F-350 SuperChasCab 4WD SD DRW	7.3 TD	12,300	(a,d,e,g)
F-350 crew cab SD SRW	7.3 TD	13,500	(a,d,g)
F-350 crew cab SD DRW	7.3 TD	13,200	(a,d,e,g)
F-350 crew cab 4WD SD SRW	7.3 TD	13,100	(a,d,g)
F-350 crew cab 4WD SD DRW	7.3 TD	12,800	(a,d,e,g)
F-350 crew chas cab SD SRW	7.3 TD	12,700	(a,d,g)
F-350 crew chas cab 4WD SD SRW	7.3 TD	12,300	(a,d,g)
F-350 crew chas cab SD DRW	7.3 TD	12,400	(a,d,e,g)
F-350 crew chas cab 4WD SD DRW	7.3 TD	12,000	(a,d,e,g)

Tow Vehicle	Engine	Tow Limit (lbs.)	Note
F-450 crew chas cab SD DRW	7.3 TD	17,700	(a,g,p)
F-450 crew chas cab 4WD SD DRW	7.3 TD	17,400	(a,g,p)
F-550 crew chas cab SD DRW	7.3 TD	17,700	(a,g,p)
F-550 crew chas cab 4WD SD DRW	7.3 TD	17,300	(a,g,p)
Ranger (4WD)	3.0 V-6	4,360	(a,e)
Ranger SuperCab (4WD)	3.0 V-6	4,200	(a,e)
Ranger	4.0 V-6	6,000	(a,c)
Ranger (4WD)	4.0 V-6	5,820	(a,d)
Ranger SuperCab	4.0 V-6	5,980	(a,c)
Ranger SuperCab (4WD)	4.0 V-6	5,660	(a,d)
Ranger	4.0 V-6	3,660	(c,f,i)
Ranger SuperCab	4.0 V-6	3,520	(c,f,i)
Windstar	3.8 V-6	3,500	(a)

*DRW means dual rear wheels; SRW is single rear wheels. **TD is turbodiesel
 ***Super Duty (a) Requires automatic transmission and towing package
 (b) Requires 3.31:1 axle ratio. (c) Requires 3.55:1 axle ratio. (d) Requires 3.73:1 axle ratio. (e) Requires 3.98/4.09/4.10:1 axle ratio. (f) Manual transmission. (g) Fifth-wheel towing. (h) Automatic transmission. (i) Must be equipped with heavy-duty towing package. (j) Requires automatic transmission cooler. (k) Requires 16-inch rims. (l) Automatic rated slightly lower. (m) Requires 17-inch wheel option. (n) Requires 3.27:1 axle ratio.
 (o) Requires 4:30:1 axle ratio. (p) Requires 4.88:1 axle ratio. (q) Requires 5.38:1 axle ratio. (r) NGV is natural gas fueled vehicle.

HONDA

Odyssey	V-6 24-valve	3,500	(a,b)
Passport	3.2 V-6	4,500	
SL-X	STD	5,000	

(a) With transmission fluid cooler and two occupants. Deduct 150 pounds per passenger up to seven passengers. (b) Without transmission cooler: 2,000 pounds maximum with two occupants.

INFINITI

QX4	3.3 V-6	5,000	
-----	---------	-------	--

ISUZU

Amigo	3.2 V-6	4,500	
Rodeo	3.2 V-6	4,500	
Trooper	3.2 V-6	5,000	
Hombre	4.3 V-6	5,500	

JEEP

Cherokee/Grand Cherokee	4.0 I-6	5,000	(b,c,d)
Grand Cherokee	5.2 V-8	6,700	(b,c,d,e)
Grand Cherokee Limited (4WD)	5.9 V-8	5,000	(b)

NOTE: Trailer brakes required on all trailers weighing more than 1,000 pounds.

(a) Automatic Wrangler rated 1,000 pounds. (b) Requires weight-distributing hitch with a maximum hitch weight of 750 pounds.

(c) Requires trailer-towing package. (d) Requires automatic transmission. (e) 4WD rated 200 pounds lower. (f) Maximum hitch weight of 300 pounds.

LAND ROVER

Discovery	All	5,500	(a)
Range Rover	All	6,500	(a)

(a) Maximum trailer weight without brakes is 1,650 pounds.

LEXUS

LX450	4.5 I-6	5,000	
-------	---------	-------	--

LINCOLN

Navigator	5.4 V-8	8,000	(a,b,c)
-----------	---------	-------	---------

(a) Requires 3.73:1 axle ratio. (b) 4WD maximum 7,700 pounds with 16-inch wheels. (c) Requires trailer-towing package for more than 4,000 pounds.

Tow Vehicle Engine Tow Limit (lbs.) Note

MAZDA

B3000	3.0 V-6	4,000	(a,e)
B3000 (4WD)	3.0 V-6	3,700	(a,e)
B4000	4.0 V-6	6,000	(a,c,d)
B4000 (4WD)	4.0 V-6	5,700	(a,c,d)
MPV	3.0 V-6	4,300	(b)
MPV (AWD)	3.0 V-6	4,000	(b)

(a) Requires automatic transmission; manual rating lower. (b) Requires trailer-towing package. (c) Requires special axle ratio and trailer-towing package. (d) Requires load-equalizing hitch more than 2,000 pounds. (e) Cab Plus rating lower.

MERCEDES-BENZ

ML320	3.2 V-6	5,000	
-------	---------	-------	--

MERCURY

Mountaineer	4.0 V-6	5,860	(a,c)
Mountaineer (4WD)	4.0 V-6	5,640	(a,c)
Mountaineer	5.0 V-6	6,700	(a)
Mountaineer (AWD)	5.0 V-6	6,460	(a)
Villager	3.0 V-6	3,500	(a)

(a) Tow package required with weight-distributing hitch. (b) Load-carrying hitch required. Automatic transmission cooler required. (c) With optional towing package.

MITSUBISHI

Montero	3.5 V-6	5,000	(a)
Montero Sport LS, XLS	3.0 V-6	5,000	(a)

(a) Tow rating with trailer brakes; 1,500 pounds without.

NISSAN

Pathfinder	3.3 V-6	5,000	(a)
Frontier	2.4 I-4	3,500	(b,c)
Quest	3.0 V-6	3,500	

(a) Manual transmission rated at 3,500 pounds. (b) Requires manual transmission. (c) Automatic transmission rated at 2,000 pounds.

OLDSMOBILE

Bravada	4.3 V-6	5,000	(a)
---------	---------	-------	-----

NOTE: Must have electronic brake controller for vehicles with antilock brakes.

(a) Frame-mounted hitch required. (b) Requires towing package.

PLYMOUTH

Voyager (FWD)	3.3 V-6	3,500	(b)
---------------	---------	-------	-----

NOTE: Trailers over 1,000 pounds must have brakes.

(a) Four-speed automatic transmission required. Hitch weight must be equal to 10 percent of towed weight. (b) Requires heavy-duty tow package, frame-mounted hitch for trailers of 2,000 pounds or more where applicable. Maximum hitch weight is 15 percent of tow limit.

PONTIAC

Montana	3.4 V-6	3,500	(a)
---------	---------	-------	-----

(a) Requires towing package.

TOYOTA

4Runner	2.7 I-4	3,500	(a)
4Runner	3.4 V-6	5,000	(a)
Land Cruiser	4.7 V-8	5,500	(b)
Sienna	3.0 V-6	3,500	(a,c)
Tacoma	All I-4	3,500	(a)
Tacoma	3.4 V-6	5,000	(a)
Tundra	4.7 V-8	7,200	(c)

(a) Maximum hitch weight 10 percent of tow limit. (b) Preliminary; subject to change. (c) With optional towing package.

VOLKSWAGEN

EuroVan	All	4,400	(a)
---------	-----	-------	-----

(a) Requires trailer brakes.

Tow ratings taken from TRAILER LIFE Magazine's compilation of manufacturers published tow ratings for 1999 vehicles.

Coachmen RV Forges Alliance with Disney

Coachmen RV Company and WALT DISNEY WORLD® Resort, respective leaders in the recreational vehicle (RV) and entertainment/family vacation industries, have formed an alliance that will allow the companies to work together into the new millennium. Coachmen is now the Official RV of Disney's Fort Wilderness Resort and Campground and Disney's Wide World of Sports™ Complex in Florida.

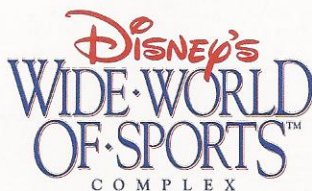
As part of this new alliance, Coachmen RVs will be prominently displayed at Disney's 750-acre campground resort. Disney's Fort Wilderness Resort and Campground, affectionately known as the "most magical campground in the World", boasts nearly 800 campsites, 700 of which are full hook-up sites for RVs. It also features over 400 deluxe Wilderness Cabins as well as various recreational and entertainment facilities. This elite resort is one of the three original vacation

resorts opened when WALT DISNEY WORLD® Resort premiered in 1971. A Coachmen RV is expected to be displayed near Pioneer Hall, home of the popular Hoop-Dee-Do

Musical Revue, the longest running dinner show at WALT DISNEY WORLD® Resort. Fort Wilderness is also being added as a premier vacation option in Coachmen's Ultimate RV™ Vacation Program.

Coachmen RVs will also be a part of the Disney magic at Disney's Wide World of Sports™ Complex. Spanning 200 acres, this ultra modern facility, features a 10,000 seat baseball stadium which is also the spring training home of the Atlanta Braves. The complex, designed for athletes and fans alike, includes numerous state-of-

the-art playing fields and venues serving a wide variety of sports. Disney's Wide World of Sports™ is truly the "ultimate sports destination".



Photographed at Disney's Fort Wilderness Resort and Campground



Photo Courtesy of Disney's Wide World of Sports™ Complex

A Company You Can Trust Since 1964



It all began in 1964. A small company started on its way to becoming one of the most recognized names in the Recreational Vehicle industry. Right away Coachmen started earning the reputation as a leader.

From the beginning it was obvious that Coachmen is a company that cares about the products it produces and the people who enjoy them; always looking for better ways to bring the pure enjoyment

of the RV Lifestyle to more and more families.

In the nearly four decades since Coachmen's modest beginnings, countless companies have come and gone. But Coachmen has stayed the course. From product development to service after the sale, Coachmen has helped set the standards for others to follow. Many of today's product designs, manufacturing techniques and product warranties are a result of Coachmen innovations.

Coachmen—Celebrating 35 Years as "Leader to the Great Outdoors."



for the new millennium

Visit our website at: www.coachmenrv.com

COACHMEN RECREATIONAL VEHICLE COMPANY
P.O. Box 30, Middlebury, IN 46540 • P.O. Box 948, Fitzgerald, GA 31750

JERRY'S TRAILERS & CAMPERS
2601 S. 13th St.
Norfolk, NE 68701
(402) 371-1306

