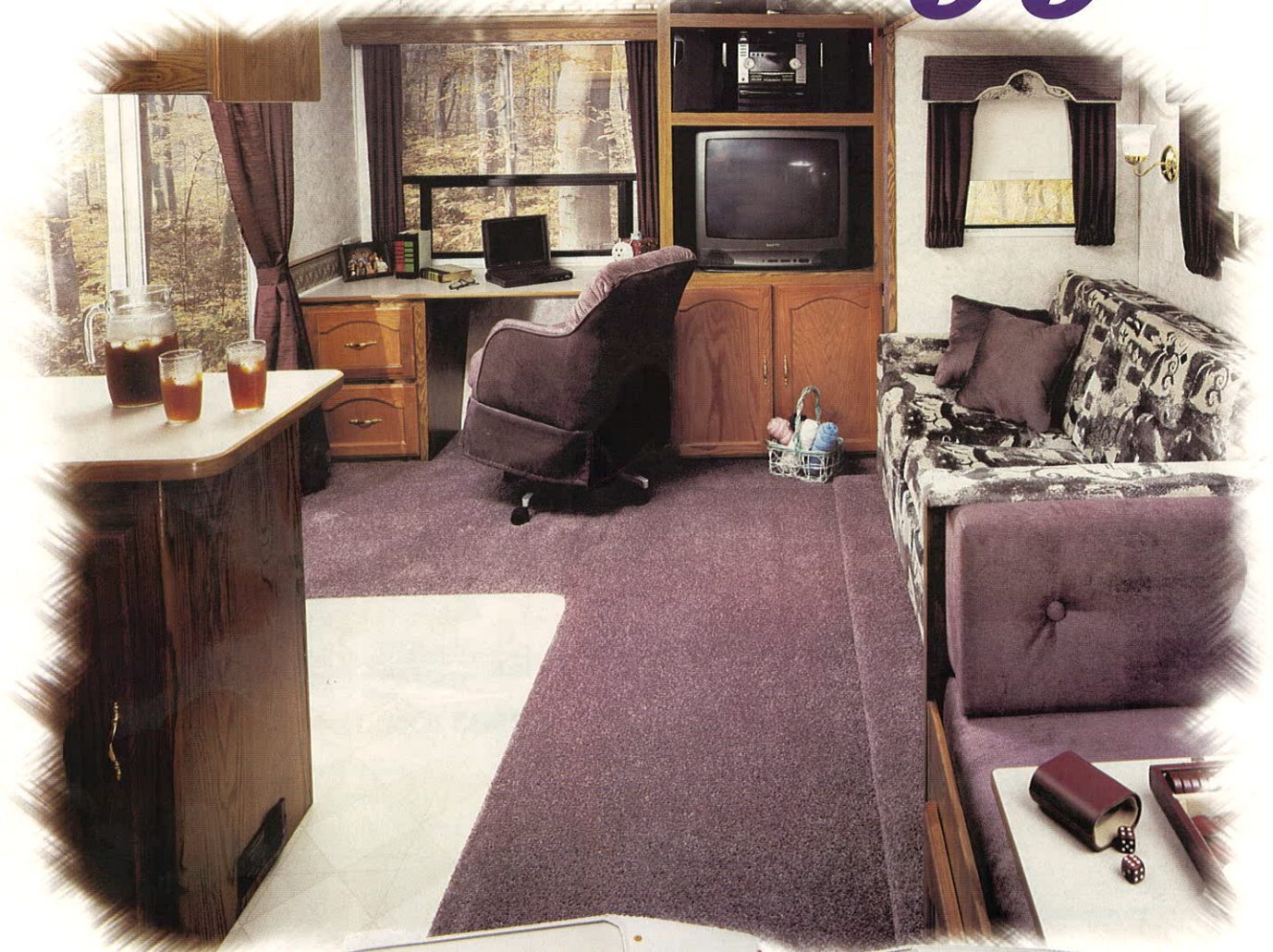
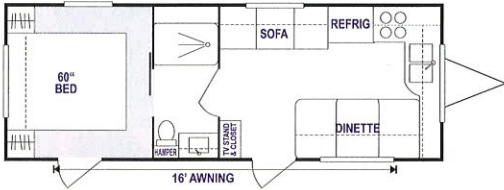


# Sportsmen

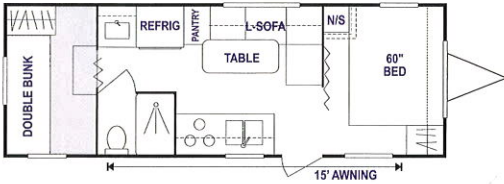
'99



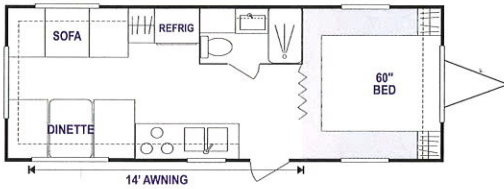
# Sportsmen '99 TRAVEL TRAILERS



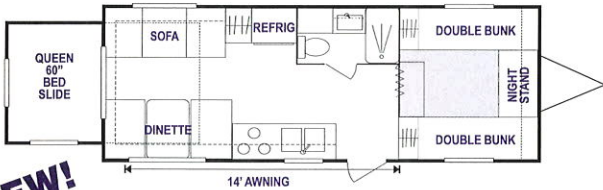
**2503** (Opt. 1)



**2504 SS** - 45 cu. ft. ext. storage!

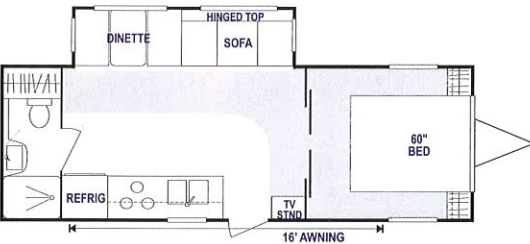


**2505** (Opt. 2)

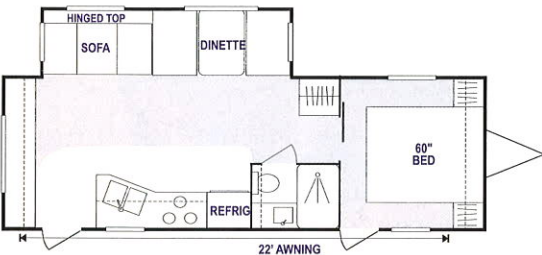


**NEW!**

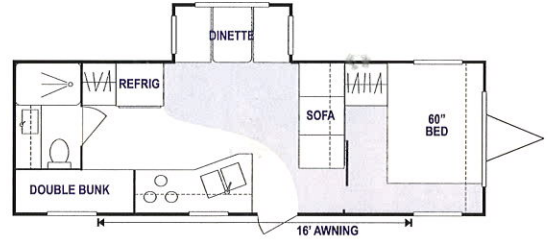
**2505 QSS** - 70 cu. ft. ext. storage!



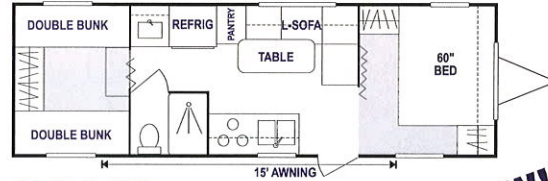
**2603P** (Opt. 2, 4, 5)



**2604P** (Opt. 2, 4, 5)

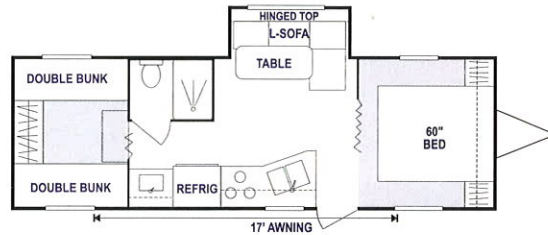


**2701P** (Opt. 4)

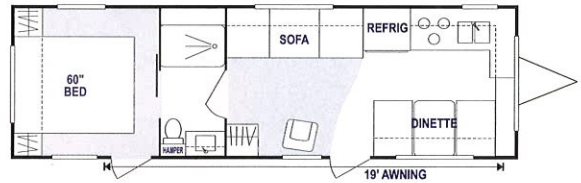


**2704 SS**

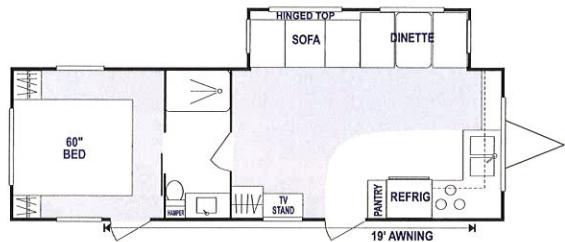
**NEW!**



**2704P SS**



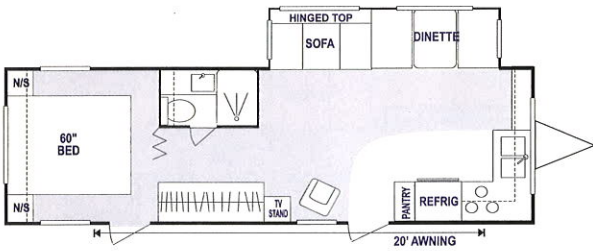
**2803** (Opt. 1)



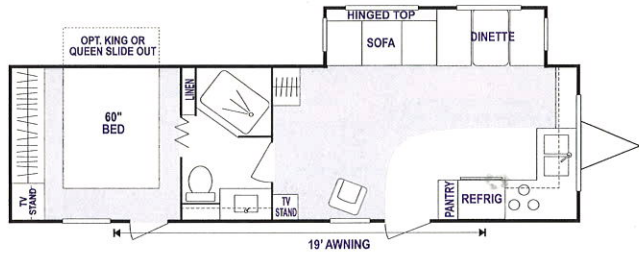
**2803P** (Opt. 1, 4, 5)



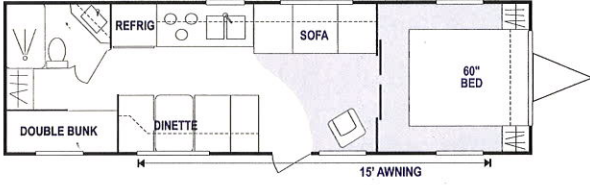
**2901**



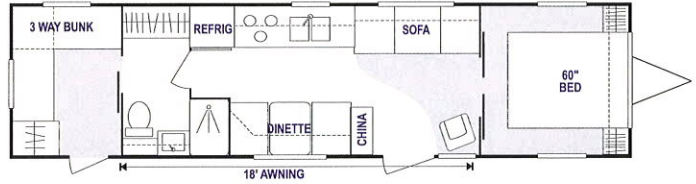
**3002P** (Opt. 1, 4, 5)



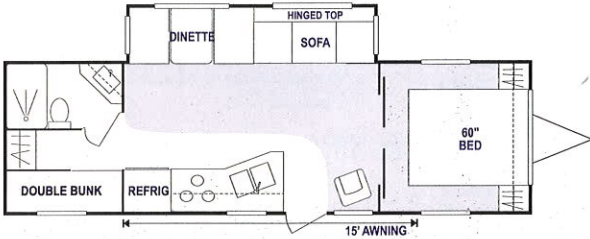
**3207P** (Opt. 4, 5, 7, King Bed Slide)



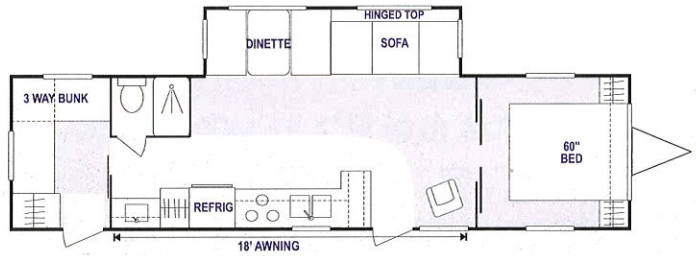
**3003** (Opt. 2)



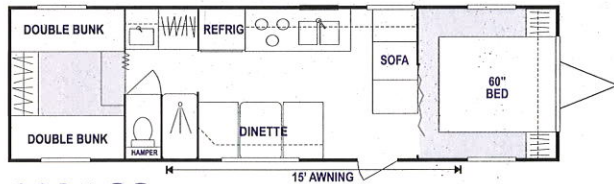
**3501** (Opt. 2, 8)



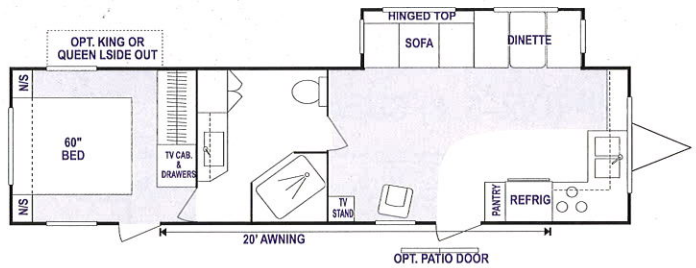
**3003P** (Opt. 2, 4, 5)



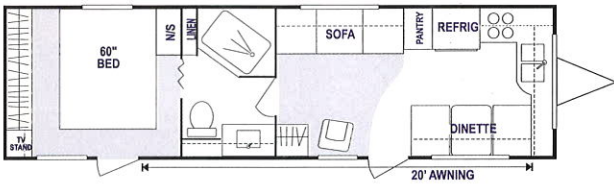
**3501P** (Opt. 2, 4, 5, 8)



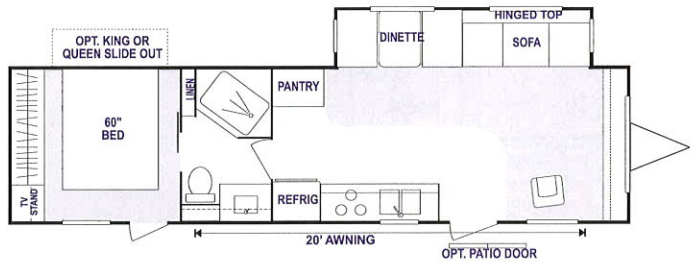
**3004 SS**



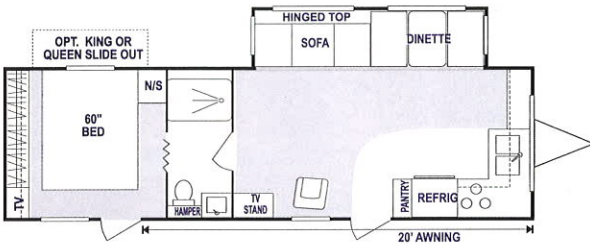
**3507P** (Opt. 1, 4, 5, King Bed Slide)



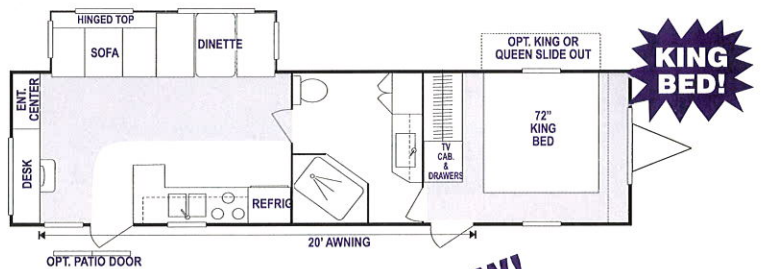
**3006** (Opt. 7)



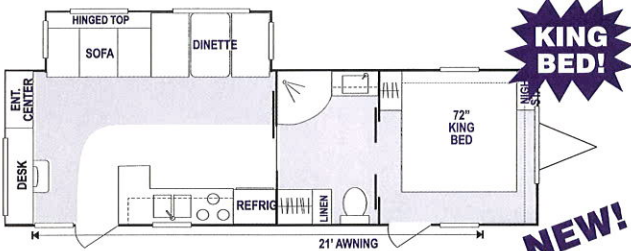
**3510P** (Opt. 1, 4, 5, 7, King Bed Slide)



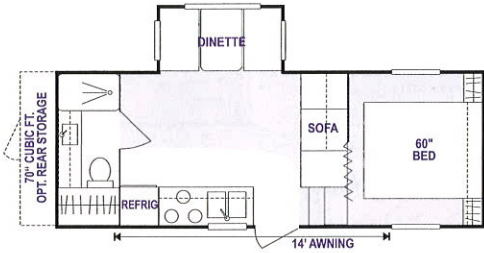
**3006P** (Opt. 4, 5, 7, King Bed Slide)



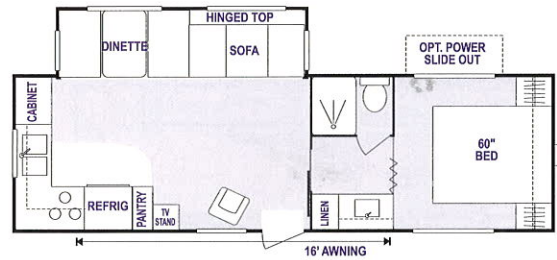
**3513P** (Opt. 4, 5)



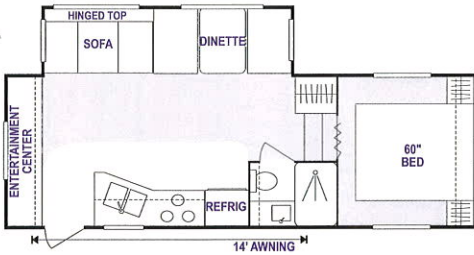
**3101P** (Opt. 4, 5)



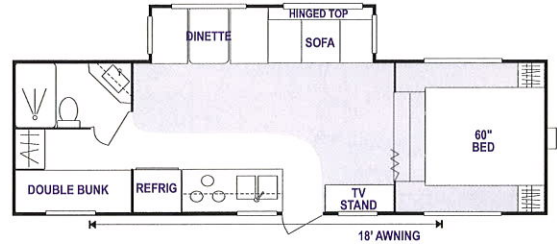
**2251P** (Opt. 4, RS) LP



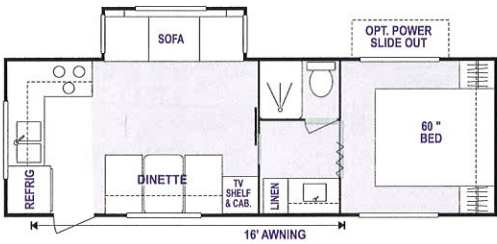
**2851P** (Opt. 3, 4, 5, 6) SU/MP



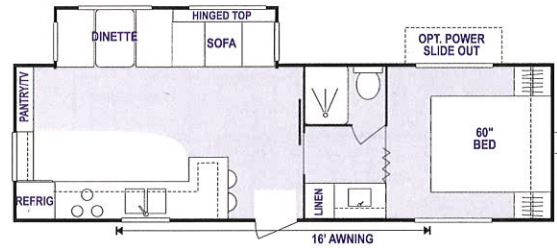
**2456P** (Opt. 3, 4, 5) LP



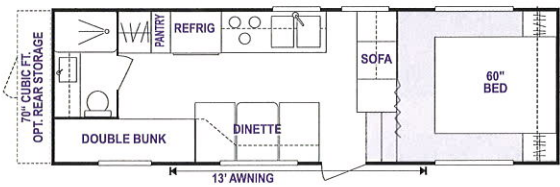
**2854P** (Opt. 3, 4, 5) MP



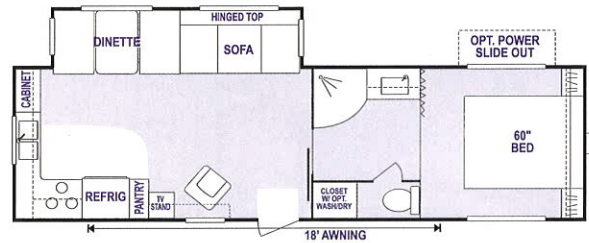
**2552P** (Opt. 5, 6) SU/MP



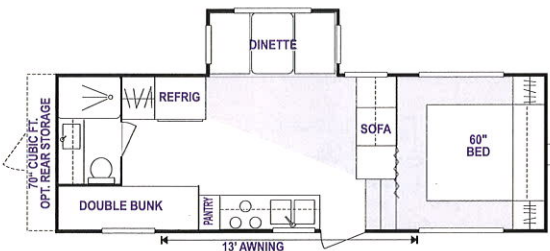
**2855P** (Opt. 3, 4, 5, 6) SU/MP



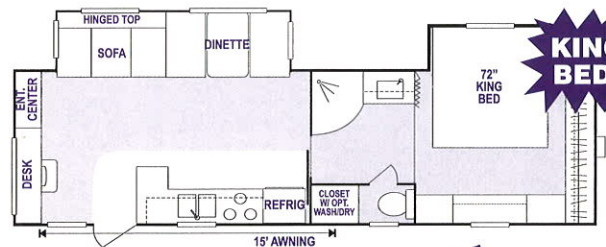
**2554** (Opt. RS) LP



**3051P** (Opt. 3, 4, 5, 6) SU

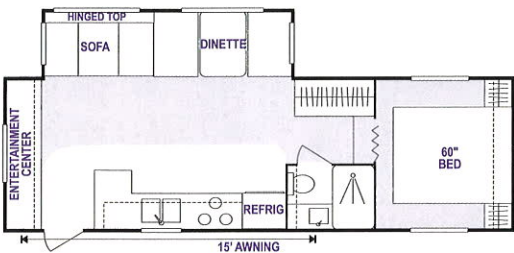


**2554P** (Opt. 4, RS) LP

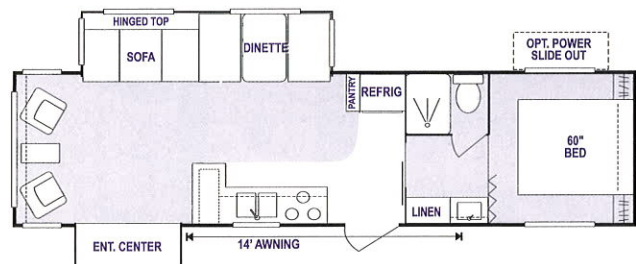


**KING BED!**

**3051P** (Opt. 3, 4, 5, 6) SU

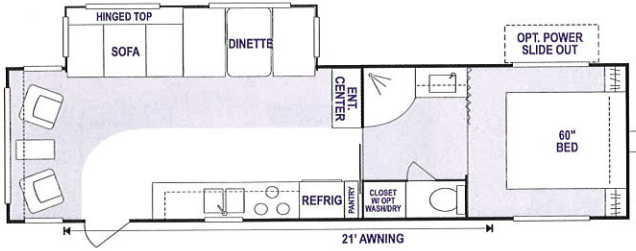


**2656P** (Opt. 3, 4, 5) MP

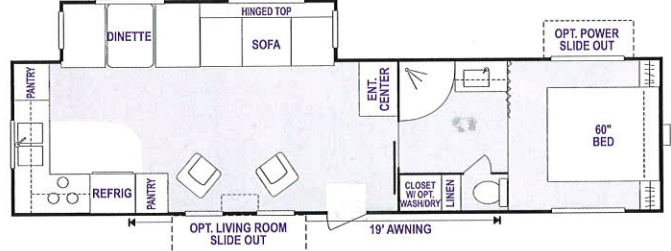


**3252Px2** (Opt. 3, 4, 5, 6) SU

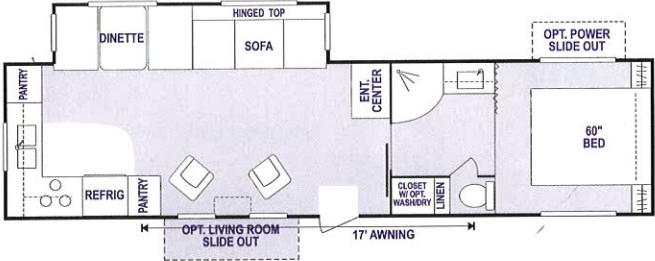
**NEW!**



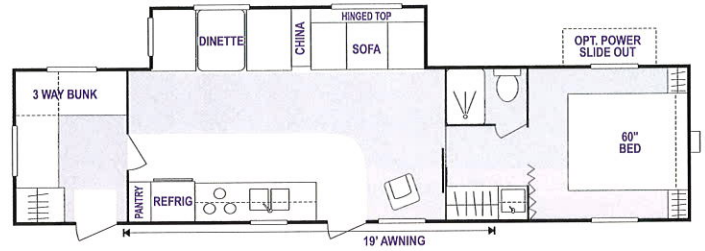
**3253P** (Opt. 3, 4, 5, 6) SU



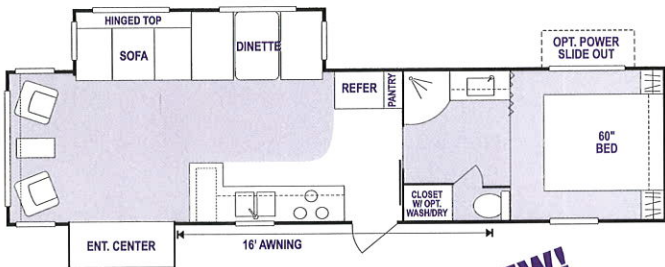
**3551P** (Opt. 3, 4, 5, 6) SU



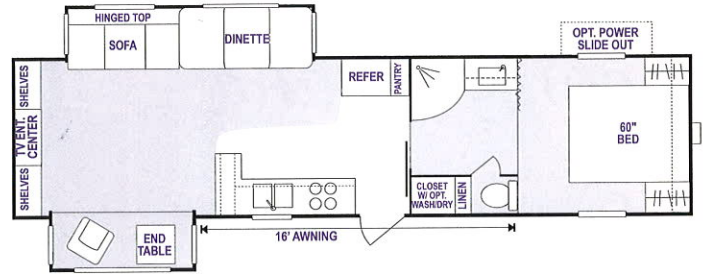
**3351P** (Opt. 3, 4, 5, 6) SU



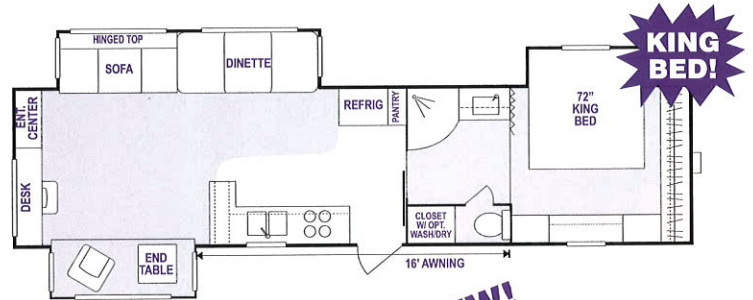
**3554P** (Opt. 3, 4, 5, 6, 8) SU



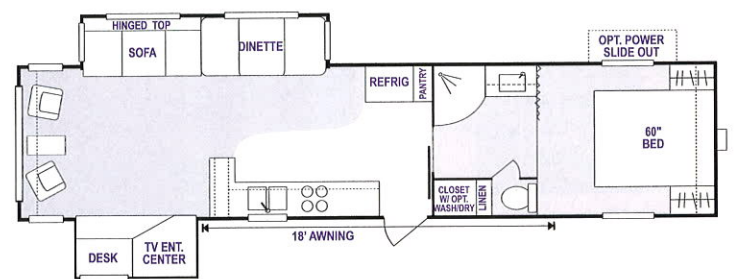
**3452Px2** (Opt. 3, 4, 5, 6) SU **NEW!**



**3556Px2** (Opt. 3, 4, 5, 6) SU



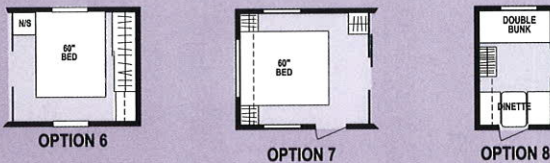
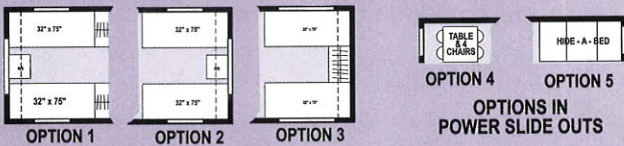
**3557Px3** (Opt. 4, 5) SU **NEW!**



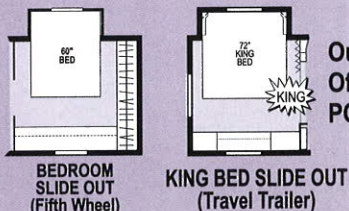
**3756Px2** (Opt. 3, 4, 5, 6) SU  
LP - low profile MP - medium profile SU - step up

# OPTIONS

Customize your new Travel Trailer or Fifth Wheel by selecting from among these options. Floor plans indicate which options are available on each unit. Ask your dealer for details.



Note: Not all options are available on each unit. See available option list beside each model floorplan number.



Our Newest Offering in POS Options!



Shamrock interior



Lilac



Shamrock

Sparrow interior

*Balancing  
comfort and  
convenience*



Sky



Sparrow



Sparrow interior

## Travel Trailer & Fifth Wheel Standard Features

- Radius Compression Windows
- Solid Oak Drawer Fronts
- Cabinet Doors: Solid Oak, Mortise & Tendon Jointed Frames
- Radial Tires
- Cable Hook Up
- 1 Sink Cover
- One Piece Rubber Roof\*
- One Piece Aluminum Roof
- Regular 60" Mattress\*\*
- Regular 54" Mattress\*\*
- Regular 48" Mattress\*\*
- Gas Props\*\*
- Large Stainless Steel Sink\*\*
- Deluxe Fabrics
- Oven - W/ Black Porcelain Front (Large 22") with 3 Burner High Output Range & Piezo Ignitor
- Steel Framed Sofas
- Storage Doors on end of Dinette Bases\*\*
- Chair (where indicated on floor plan)
- Water Heater By-Pass Kit
- Single Piece Tub Wall Surround
- Wall Border (living room & bedroom)
- Power Range Hood w/ Light
- Pull Shade Package (all windows)
- Stereo
- TV Antenna w/ Booster & 2 Jacks\*\*
- One Double Step at Main Entrance on all Fifth Wheels\*\* and Travel Trailers (24' & larger)\*\*
- One Triple Step at Main Entrance on all Power Slide Outs\*\*
- 6 Gallon DSI Water Heater
- 30# LP Bottles
- Light Switch at Entrance Door
- Light Switch for Bathroom
- Tub Faucet on all Floor Plans
- Double Door Refrigerator
- 13,500 BTU Air Conditioner
- Ducted Air (2600 Series & larger Travel Trailers and 2550 Series & larger Fifth Wheels)
- Awning (Recommended Size)
- Microwave
- Monitor Panel
- Gas Bottle Cover (on Travel Trailers)

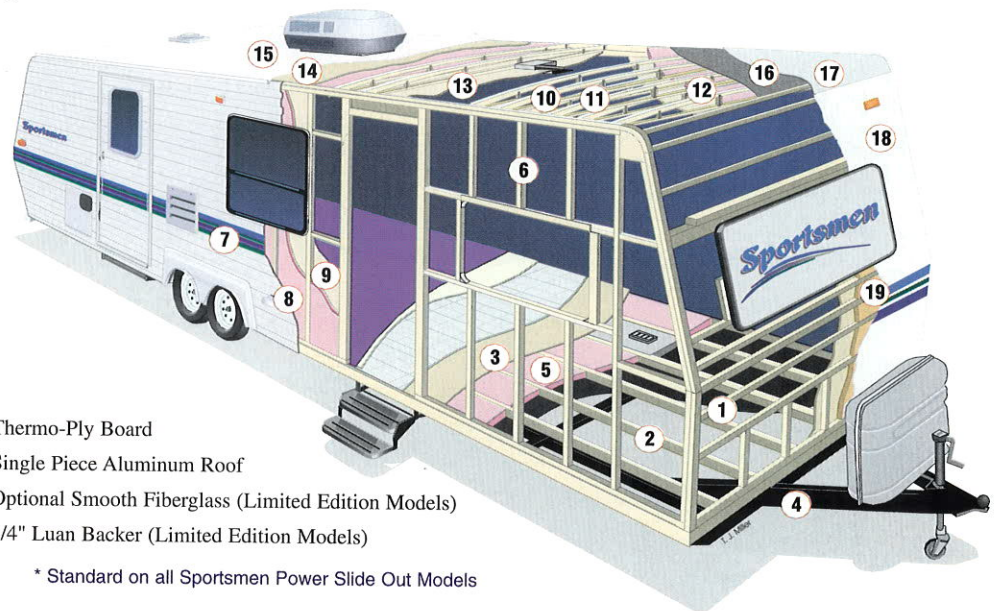
\* Standard on all Power Slide Out Models      \*\* Where applicable and codes allow.

Note: Some Standard Features may be cancelled or altered at dealer's request. Features available on early 1999 models may vary.

## Picture These Standard Construction Features

1. Puncture, tear & weather resistant underbelly
2. 2x3 Floor Joist 16" O.C.
3. 5/8" Tong & Groove Plywood
4. Heavy Gauge Box Tubular Steel Frame
5. Fiberglass Insulation R7 (Floor)
6. 2x2 Studs 16" O.C.
7. .024 MESA Metal
8. Fiberglass Insulation R7 (Sidewalls)
9. LUAN Paneling
10. 2x3 Tapered Rafters 16" O.C. (20'-25' TT & 20'-22' FW)
11. 5" Truss Rafters 16" O.C. (26'-40' TT & 25'-35' FW)
12. Fiberglass Insulation R7 (Roof)
13. LUAN Ceiling Board
14. 7/16" Deck Board\*
15. Single Piece Rubber Roof\*

16. Thermo-Ply Board
17. Single Piece Aluminum Roof
18. Optional Smooth Fiberglass (Limited Edition Models)
19. 1/4" Luan Backer (Limited Edition Models)



\* Standard on all Sportsmen Power Slide Out Models

## Optional Equipment - (Available on Travel Trailers & Fifth Wheels)

- Exterior Shower
- Water Filter
- Mini Blinds
- Deluxe Package I or II
- CD Player (available on most models)
- Stabilizer Jacks
- Stove Cover
- Spare Tire Kit
- Gas/Electric DSI 6 Gal. Water Heater
- Limited Edition Model (Fiberglass Exterior w/ End Caps)

**Limited Vehicle Warranty:** K-Z, Inc. warrants that it will repair or replace any part of your Fifth Wheel Model found to be defective in materials or workmanship within 12 months from date of original purchase. Components such as tires, plumbing and electrical features, refrigerator, range etc. are subject to separate warranties issued by other manufacturers. Ask your dealer for details.

**Two Year Structural Warranty:** The limited two-year guarantee warrants a guarantee against all defects in materials or faulty workmanship for the steel frame and wood structure for 24 months from date of original purchase. Guarantee applies to original owner only and is available upon request for inspection. NOTE: Check with your dealer for 2-Year warranty availability on select components.

**The following components include a 2-Year Limited Warranty:**

- Refrigerator
- Furnace
- Water Heater
- Oven
- Microwave
- Stool
- Water Pump

**TRAVEL TRAILERS**

	2503	2504SS	2505	2505QSS	2603P	2604P	2701P	2704SS	2704PSS	2803	2803P	2901	3002P	3003	3003P	3004SS	3006	3006P	3101P	3207P	3501	3501P	3507P	3510Pz2	3513P
UVW (Unloaded Vehicle Wt.)*	4500	4240	4500	N/A	6130	5960	5600	4520	6360	4900	6180	4920	6540	5100	6080	5060	5380	6440	7060	6700	5740	7240	7180	7480	7500
Dry Hitch Weight	600	300	600	N/A	500	780	700	400	760	760	960	680	1180	540	580	720	980	1080	600	1000	660	840	1380	1040	540
Dry Axle Weight	3900	3940	3900	N/A	5630	5180	4900	4120	5600	4140	5220	4240	5360	4560	5500	4340	4400	5360	6460	5700	5080	6400	5800	6440	6960
NCC (Net Carrier Capacity)	2368	2328	2368	N/A	3870	4040	2250	2880	3640	2860	3820	2760	3460	2470	3920	2660	2610	3560	2940	3300	1990	2760	2820	2520	2500
GVWR	6868	6568	6868	10000	10000	10000	7850	7400	10000	7760	10000	7680	10000	7570	10000	7720	7990	10000	10000	10000	7730	10000	10000	10000	10000
Interior Height	78"	78"	78"	78"	78"	78"	78"	78"	78"	78"	78"	78"	78"	78"	78"	78"	78"	78"	78"	78"	78"	78"	78"	78"	78"
Exterior Width	96"	96"	96"	96"	96"	96"	96"	96"	96"	96"	96"	96"	96"	96"	96"	96"	96"	96"	96"	96"	96"	96"	96"	96"	96"
Exterior Length	26'3"	26'5"	26'3"	27'10"	28'3"	28'2"	28'2"	28'6"	29'6"	29'6"	29'6"	30'8"	30'8"	30'8"	30'8"	31'11"	31'11"	30'9"	32'4"	32'7"	35'6"	35'6"	35'6"	35'6"	
Exterior Height	115"	115"	119"	119"	125"	125"	125"	115"	125"	115"	125"	115"	125"	115"	125"	115"	115"	125"	125"	125"	115"	125"	125"	125"	
Refrigerator (cubic feet)	6	6	6	6	6	6	6	6	6	6	6	6	6	6	6	6	6	6	6	6	6	6	6	6	
Water Heater Cap. (gallons)	6	6	6	6	6	6	6	6	6	6	6	6	6	6	6	6	6	6	6	6	6	6	6	6	
Fresh Water Cap. (gallons)	30	30	30	30	30	30	30	30	30	30	30	30	30	30	30	30	30	30	30	30	30	30	30	30	
Black Water Cap. (gallons)	32	32	32	32	32	32	32	32	32	32	32	32	32	32	32	32	32	32	32	32	32	32	32	32	
Gray Water Cap. (gallons)	32	32	32	32	32	32	32	32	32	32	32	32	32	32	32	32	32	32	32	32	32	32	32	32	
LP Gas Cap. (lbs.)	60	60	60	60	60	60	60	60	60	60	60	60	60	60	60	60	60	60	60	60	60	60	60	60	
Furnace BTU's (1,000's)	20	20	20	20	25	25	25	25	25	25	25	25	25	25	25	25	25	25	30	30	30	30	30	30	
Tire Size	15"	15"	15"	15"	15"	15"	15"	15"	15"	15"	15"	15"	15"	15"	15"	15"	15"	15"	15"	15"	15"	15"	15"	15"	

**FIFTH WHEELS**

	2251P	2456P	2552P	2554	2554P	2656P	2851P	2854P	2855P	3051P	3057Px2	3252Px2	3253P	3351P	3452Px2	3551P	3554P	3555Pz2	3557Px3	3756Px2
UVW (Unloaded Vehicle Wt.)*	5600	6290	6420	5100	6100	7080	7300	6340	7240	7920	8100	8490	8020	8360	8620	8850	8600	9440	9890	10240
Dry Hitch Weight	880	1180	1100	960	1180	1440	1440	1100	1040	1420	N/A	1500	1640	1540	1620	1580	1820	1600	1600	1600
Dry Axle Weight	4720	5110	5320	4140	4920	5640	5860	5240	6200	6500	N/A	6990	6380	6840	7000	6270	6780	7840	8030	8640
NCC (Net Carrier Capacity)	2280	3710	3580	2400	3900	2920	4140	3360	3800	3500	3640	3010	3620	3180	3380	3150	3400	4160	3970	4760
GVWR	7880	10000	10000	7500	10000	10000	11440	10000	11040	11420	11740	11500	11640	11540	12000	12000	12000	13600	13860	15000
Interior Height	78"	78"	78"	78"	78"	78"	78"	78"	78"	78"	78"	78"	78"	78"	78"	78"	78"	78"	78"	78"
Exterior Width	96"	96"	96"	96"	96"	96"	96"	96"	96"	96"	96"	96"	96"	96"	96"	96"	96"	96"	96"	96"
Exterior Length	22'11"	25'	26'2"	26'11"	26'11"	27'	28'8"	29'4"	28'8"	31'3"	31'11"	33'	33'	34'4"	34'10"	35'10"	35'10"	35'10"	37'10"	
Exterior Height	126"	126"	138"	118"	126"	130"	138"	130"	138"	138"	138"	138"	138"	138"	140"	140"	140"	140"	140"	
Refrigerator (cubic feet)	6	6	6	6	6	6	6	6	6	6	6	6	6	6	6	6	6	6	6	
Water Heater Cap. (gallons)	6	6	6	6	6	6	6	6	6	6	6	6	6	6	6	6	6	6	6	
Fresh Water Cap. (gallons)	30	55	55	30	30	55	55	30	55	55	55	55	55	55	55	55	55	55	55	
Black Water Cap. (gallons)	32	32	32	32	32	32	32	32	32	32	32	32	32	32	32	32	32	32	32	
Gray Water Cap. (gallons)	32	32	32	32	32	32	32	32	32	32	32	32	32	32	32	32	32	32	32	
LP Gas Cap. (lbs.)	60	60	60	60	60	60	60	60	60	60	60	60	60	60	60	60	60	60	60	
Furnace BTU's (1,000's)	20	25	25	20	25	25	25	25	25	30	30	30	30	30	35	35	35	35	35	
Tire Size	15"	15"	15"	15"	15"	15"	15"	15"	15"	15"	15"	15"	15"	15"	15"	15"	16"	16"	16"	

\* **Limited Edition Models (all fiberglass)** adds approximately 10% to total weight.

\* **Rear Storage (RS option)** adds approximately 2' and 200 lbs.

\* **Additional Slide Out Rooms** each add approximately 500 lbs. to total weight.



**K-Z Incorporated**  
 9270 West U.S. 20  
 Shipshewana, IN 46565  
 E-Mail: kzinc@shipshenet.com  
 Plant Location: 1 Mile West of S.R. 5 on U.S. 20

**Dealer:**

**JERRY'S TRAILERS & CAMPERS**  
 2601 S. 13th St.  
 Norfolk, NE 68701

**Vehicle Loading**—Every effort has been made to provide the greatest number of options for the recreational owner. Each owner is responsible to select loads allowing the recreational vehicle to remain within the manufacturer's specified chassis weight limits. Do not overload the recreational vehicle.

**Dry Weights** are based on standard features only and do not include optional equipment. Carrying capacity is determined by subtracting Dry Gross Weight from GVWR and includes fluids, options and cargo. Liquid capacities and weights are approximations only.

**NOTE:** This information is intended as a guide only. Weights of individual vehicles may vary. Consult your Owner's manual for complete loading, weighing & towing instructions.