

1999 CHALLENGER MOTORHOMES

Now you're going places



Damon
Value by Design

PICTURE PERFECT

When you travel, every moment counts. You have places to go. Things to do. You're not just wandering ... you're making memories. And those memories become all the more vivid when you travel in a Challenger.

This is a full-basement, wide-body motorhome of exceptional value. Its comforts are many. Its styling exquisite. Its appeal undeniable. Yet for all its obvious luxury, for all the pampering it provides, Challenger is competitively priced. That's a memorable notion itself. Imagine ... getting features like these without breaking the bank:

- Exceptionally roomy, open floor plans that let you stretch out and relax
- A choice of OceanSide, RockPort or SpringField decor packages, all of which include rich wood cabinet doors and fashionable, understated wall coverings

345 • RockPort decor • Pearwood



- Interior details that truly define luxury — such as the useful storage rack above the entrance door, a big, plush sofa (68" or longer in some models), an extra swivel chair in the living room, and, in the kitchen, attractive plank flooring, standard
- Abundant storage space — why leave anything behind? Challenger lets you bring it all
- A spacious dinette with plush, decor-coordinated upholstery
- Large windows for optimum visibility, ventilation and light
- A unique StepSaver™ kitchen — thoughtfully laid out to make meal preparation quick and easy; features a large storage pantry, a big, flush-mount, double-door refrigerator, a three-burner range, a microwave, a European-styled, 1-1/2 bowl sink

that resists stains, scratches, dents and heat, a decor-coordinated countertop, a kitchen window over the sink in most floor plans, and space under the sink for a wastebasket (wastebasket included)

- A space-adding slideout kitchen in model 330 — and it features Challenger's exclusive "invisible floor": No carpet seam, no step-up, nothing to trip over
- Elegant window treatments — including smart, fabric-covered lambrequins and decorator valances
- Optional day/night shades for added privacy
- Supreme comfort in any climate, year-round, thanks to Challenger's exclusive Comfort Control Center™

330 • SpringField decor • Light Oak



- An elegant, supremely comfortable bedroom with rich cabinetry and trim, decorator lighting, a mirrored headboard, and a designer bedspread that matches the window treatments
- A charming, fully appointed bathroom — uniquely designed for each Challenger and complete with beautiful cabinetry, a mirrored medicine cabinet, a decor-coordinated countertop and a shower with a built-in skylight for greater brightness and a more open, airy feeling
- Outside, a standard awning you're sure to love for the way it expands your living space into the Great Outdoors
- A cockpit windshield curtain for extra privacy

345 • RockPort decor • Pearwood

330 • SpringField decor • Light Oak



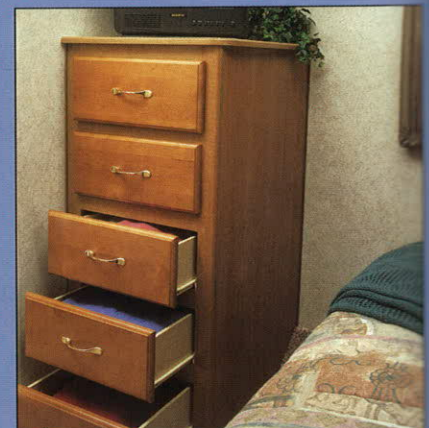
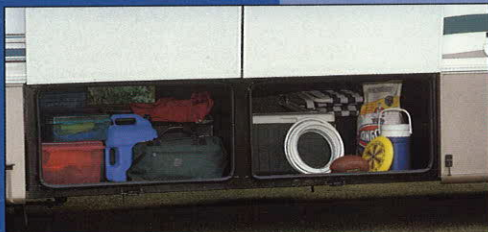
STORAGE, STORAGE... AND MORE STORAGE

Veteran RVers know it. First-timers soon discover it. You can never have too much storage in an RV. Challenger takes it to the max.

You'll see that immediately in the basement storage we provide. Our full-basement compartments give you up to a whopping 150 cubic feet of storage space. And all Challenger models have a huge, 29"-high by 32"-wide rear pass-through storage compartment. Oh, yes: We can't forget to mention that our exterior storage compartment doors now have easy-to-grip paddle handles with latches that grip immediately to keep the doors shut, just like car doors.

In the entry steps you'll find yet another storage compartment that's great for tools or other such gear.

And above the entrance door there's a unique rack designed specifically for books and magazines — to keep them handy, yet organized and out of the way. But you may find other uses for it too. As far as we're concerned, storage is no luxury ... it's a necessity.



345 • RockPort decor • Pearwood

TAKE COMMAND OF THE ROAD

No doubt about it, the Challenger is a lot of motorhome. But you wouldn't know that to drive it: It handles like a dream. In fact, it's one of the most driveable RVs on the road today. And that's due in no small measure to the comforts we provide in the cab.

Take the dashboard. Its standard burl finish is especially striking. More important, all instruments here are positioned for easy viewing and easy access. The AM/FM/Cassette player is standard.

The driver and passenger seats provide maximum comfort, maximum back support. They're easy to get in and out of too: Both swivel and are adjustable, forward and back. An optional driver's seat is also available to make the cab more accessible.



345 • Springfield decor • Light Oak

Backup monitor



Plus, you get all the best "driveability" features standard, such as an automatic transmission, cruise control, power steering, automotive-style heat and air-conditioning, and much more.

For extra safety and convenience, Challenger offers power sideview mirrors and an optional backup monitor system that lets you see directly behind your motorhome when it's in reverse. The monitor is mounted so you can watch it without losing sight of the sideview mirrors.

Dash fan



Our dash fans really help defrost the windshield in cold or rainy weather. Not only that, but they help circulate air in the cab to keep driver and passenger comfortable regardless of the temperature outside.



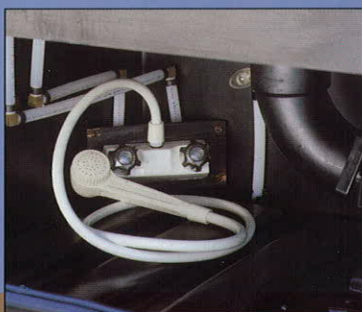
CHALLENGER'S "SMART" ELECTRICAL SYSTEM

A battery control system maximizes battery charge, whether you're on the road or at camp.

A solid-state converter eliminates transformer hum.

Two 6-volt batteries last twice as long as a single 12-volt battery.

All wiring is harnessed for improved dependability and easy maintenance.



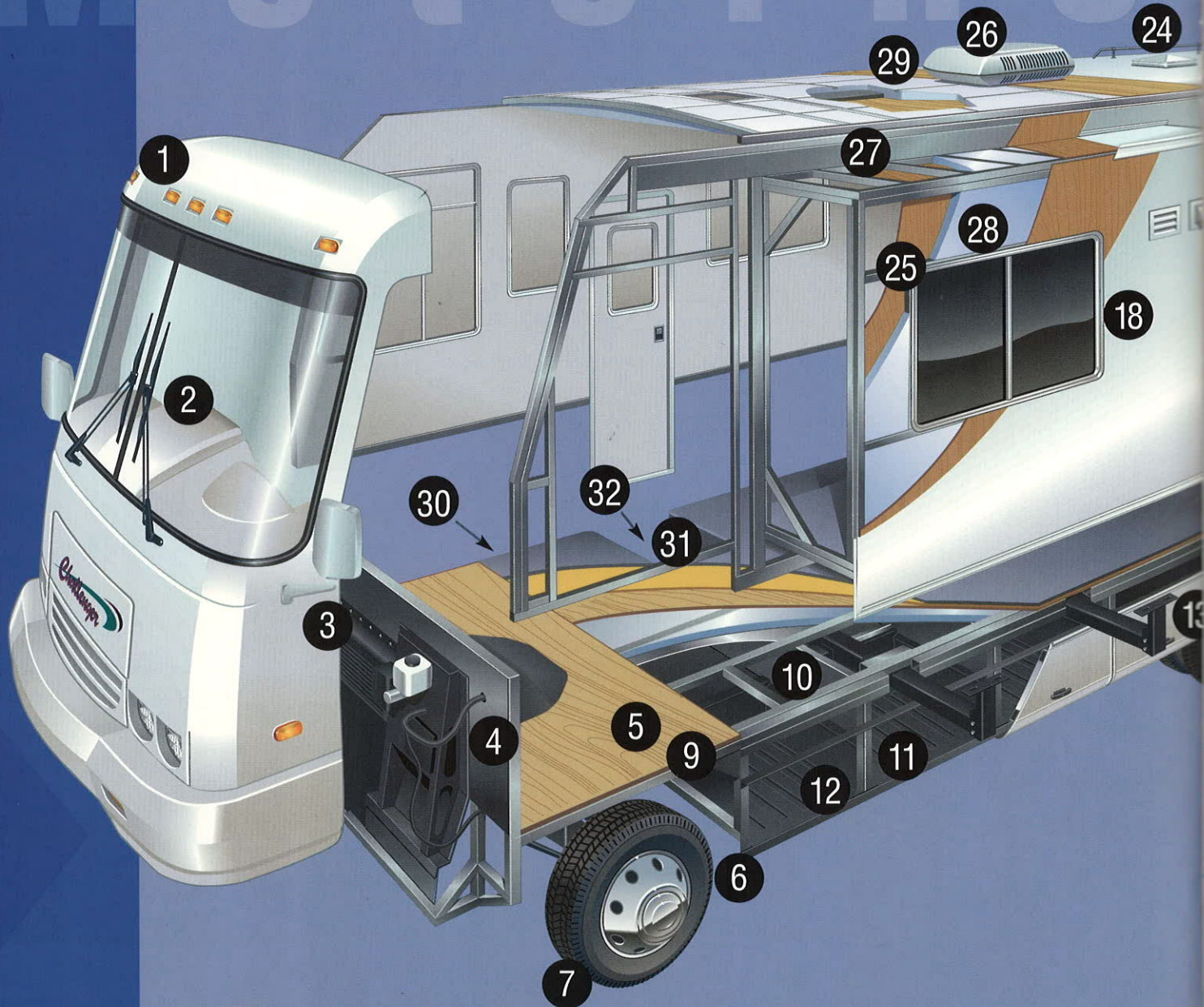
Here's a Damon feature that really saves you work: Our slideout rooms come with an awning. As the room slides out, the awning automatically unrolls to provide a sloping roof that allows water and debris to run off. No more climbing on the roof for cleanups.

In our utility hookup compartment, you'll find the added bonus of a standard exterior shower featuring hot and cold running water. It's perfect for hosing off dirty feet or for cleaning gear before you come inside.

BUILT TO ENDURE

Every Challenger Motorhome, indeed every Damon RV, benefits not only from our years of experience, but from modern, computer-aided design and innovative manufacturing technologies. They help us build products that last, products that retain their value over the years and miles.

Of course, it helps that Challenger offers so much value to begin with. Here, you'll find more standard features, more luxury innovations, more storage space and more Designer Details™ than in any comparable RV in its class. And the construction is absolutely first-rate. Features like those shown below make the difference.

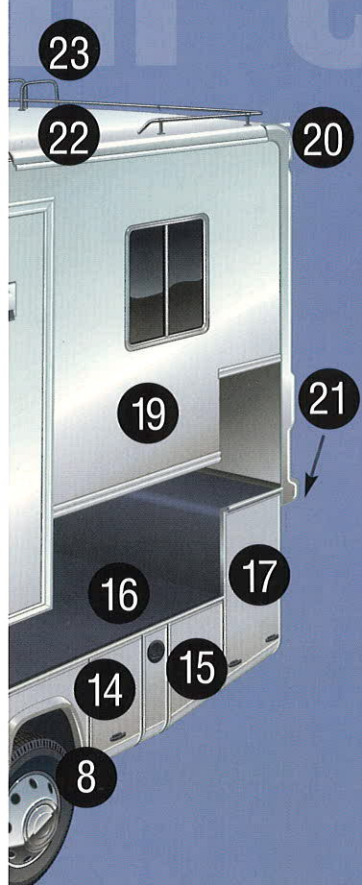


This is a strenuous, 400-point inspection test that every Challenger must pass before it leaves the factory. We've set our standards high because we know yours are. And it's our goal, always, to go beyond your expectations ... to go the extra mile for you.

WARRANTY INFORMATION

- | | |
|----------------------------------|---------------------------|
| One-piece rubber roof - 12 years | Gas sensor - 2 years |
| Awning - 5 years | Toilet - 2 years |
| Water heater - 2 years | Generator - 3 years |
| Range - 2 years | Power converter - 2 years |
| Refrigerator - 2 years | Everything else - 1 year |

Challenger

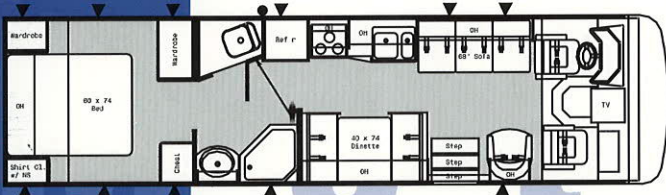


- 1 A sleek, stylish, fully integrated fiberglass front cap
- 2 Pantographic, dual-arm windshield wipers that ensure top visibility in adverse weather
- 3 Standard power mirrors for added safety and convenience
- 4 A steel firewall that increases safety and adds strength to the front of the motorhome
- 5 Seamless, one-piece decking that reduces squeaks and road noise, stays solid, level
- 6 Undercoating and a foam seal that act as additional barriers to the elements
- 7 Computerized wheel alignment (part of Damon's 400-point StartRight Quality Assurance Program™) that helps provide a safe, trouble-free ride
- 8 Great-looking, corrosion-resistant stainless steel wheel liners
- 9 A neoprene gasket that isolates the frame from the steel chassis platform, reducing the transmission of noise and vibration from the chassis
- 10 A solid body foundation with maximum vertical strength, thanks to 13"-deep, heavy-duty, 14-gauge steel crossmembers with an I-shaped member welded to each end
- 11 Storage compartments that are made of rugged rotocast polyethylene for easy cleaning and maintenance, then framed in steel for extra durability and the best possible weather seal
- 12 One-way kazoo valves in all storage compartments — to make washing them out a cinch; water simply drains away
- 13 One compartment (in most Challengers) to house the holding tanks and the water tank, both of which are heated by a furnace for worry-free extended seasonal use; all water stays in the same general location, so the motorhome's weight distribution isn't upset as the water is used
- 14 Sturdy, lightweight, insulated baggage doors with easy-to-grip paddle handles and latches that grip immediately to keep the doors shut — just like car doors
- 15 Exterior storage compartments that, in most cases, have 22"-high openings outside the main rails and full 12" pass-through areas; there are no exposed fasteners to snag clothing on these openings, either ... and all exterior storage compartments are lighted with the flick of a centralized switch by the motorhome's entry door
- 16 A high-quality residential carpet and padding that not only provide comfort, but help insulate the floor
- 17 A 50-cubic-foot rear trunk that has a pass-through area approximately 29" high and 32" wide
- 18 Attractive, white, anodized aluminum radius window frames with large sliding glass windows that are tinted to keep out solar heat
- 19 An elegant-looking Ice White™ exterior made of durable, easy-to-maintain, one-piece fiberglass
- 20 A fully integrated, aerodynamic rear fiberglass cap
- 21 A spare tire, standard
- 22 A one-piece, seamless roof that comes with a full 12-year warranty and is specifically formulated to resist the ravages of the sun and the elements
- 23 A standard aluminum roof ladder that permits easy access to roof storage
- 24 Standard ceiling vents that provide ventilation throughout the coach
- 25 Perimeter window framing that prevents leakage and increases strength
- 26 A standard 13.5-BTU central air-conditioning unit — part of Damon's Comfort Control Center™ — that efficiently distributes cool air
- 27 Critical load-bearing components that have undergone finite element analysis to ensure structural integrity
- 28 Full, 1/2" expanded polystyrene block-foam insulation in the floor and 2" sidewalls that increase energy efficiency and provide an excellent acoustical barrier
- 29 A super-solid crowned roof assembly consisting of an extruded aluminum framework, lauan decking and highly energy efficient block-foam insulation
- 30 A 100-pound propane tank that allows extended usage with fewer refills
- 31 An interior entry step that not only looks great but gives you easy access to the two six-volt, deep-cycle batteries ... and has a convenient tool-storage compartment
- 32 A super-convenient, electrically operated exterior entrance step, standard

FLOOR PLANS

▲ = Underfloor storage
● = Exterior wash down kit

310

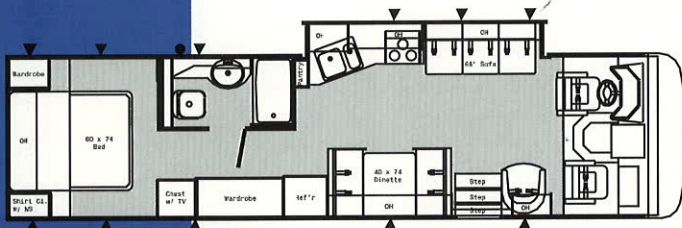


Features: Walk-through bath • Neo-angle shower
• Excellent bedroom storage

Model 310

| | |
|---------------------------------|---------------|
| Options | A, C |
| Chassis | Chevy/Ford |
| Fuel tank | 80/75 gal. |
| Wheelbase | 216.5" |
| GVWR (lbs.) | 16,500/18,000 |
| Base weight | N/A |
| Length | 33'6" |
| Width | 100" |
| Overall height with A/C | 11'7" |
| Fresh water system (appx. gal.) | 70 |
| Grey water (appx. gal.) | 53 |
| Black water (appx. gal.) | 53 |
| LP gas capacity (appx.) | 100 lbs. |
| Sleeping capacity | 4 |

330

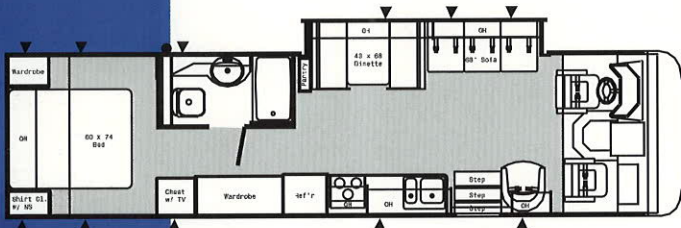


Features: Slideout kitchen • Slideout does not interfere with pathway when closed • Pantry

Model 330

| | |
|---------------------------------|---------------|
| Options | A, C |
| Chassis | Chevy/Ford |
| Fuel tank | 80/75 gal. |
| Wheelbase | 216.5" |
| GVWR (lbs.) | 16,500/18,000 |
| Base weight | N/A /13,900 |
| Length | 35' |
| Width | 100" |
| Overall height with A/C | 11'7" |
| Fresh water system (appx. gal.) | 70 |
| Grey water (appx. gal.) | 53 |
| Black water (appx. gal.) | 53 |
| LP gas capacity (appx.) | 100 lbs. |
| Sleeping capacity | 4 |

335

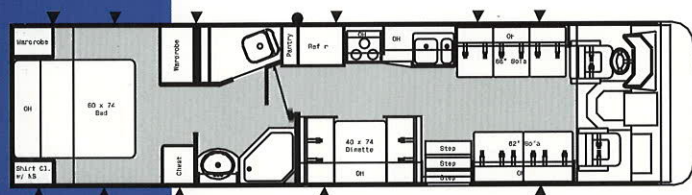


Features: Slideout does not interfere with pathway when closed • Pantry

Model 335

| | |
|---------------------------------|----------|
| Options | A, C |
| Chassis | Ford |
| Fuel tank | 75 gal. |
| Wheelbase | 216.5" |
| GVWR (lbs.) | 18,000 |
| Base weight | 13,900 |
| Length | 35' |
| Width | 100" |
| Overall height with A/C | 11'7" |
| Fresh water system (appx. gal.) | 70 |
| Grey water (appx. gal.) | 53 |
| Black water (appx. gal.) | 53 |
| LP gas capacity (appx.) | 100 lbs. |
| Sleeping capacity | 4 |

345



Features: Open living area • Lots of closet space • Neo-angle shower • Double sofa seating • Split bath

Model 345

| | |
|---------------------------------|----------|
| Options | A, B, C |
| Chassis | Ford |
| Fuel tank | 75 gal. |
| Wheelbase (with tag axle) | 234.5" |
| GVWR (lbs.) | 18,000 |
| Base weight | N/A |
| Length | 35'9" |
| Width | 100" |
| Overall height with A/C | 11'7" |
| Fresh water system (appx. gal.) | 70 |
| Grey water (appx. gal.) | 53 |
| Black water (appx. gal.) | 53 |
| LP gas capacity (appx.) | 100 lbs. |
| Sleeping capacity | 4 |

Note: Base weight = weight of motorhome as produced at factory without options, cargo, occupants, fresh water, LP or dealer-installed accessories.

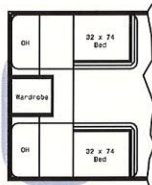
Options:



Option A



Option B



Option C



SPECIFICATIONS

| Kitchen | 310 | 330 | 335 | 345 |
|---|-----|-----|-----|-----|
| Cutlery drawer | N/A | N/A | S | N/A |
| Padded dinette top | S | S | S | S |
| Solid-wood cabinet doors* | S | S | S | S |
| Coffee maker | S | S | S | S |
| Cordless hand vacuum | S | S | S | S |
| Refrigerator – flush-mount double-door | S | S | S | S |
| Refrigerator – large flush-mount double-door | O | O | O | O |
| Refrigerator – solid-wood front* | O | O | O | O |
| Wood plank flooring* | S | S | S | S |
| Microwave oven with turntable | S | S | S | S |
| Lighted power range hood with monitor panel (including LPG readout) | S | S | S | S |
| 3-burner range and oven | S | S | S | S |
| Folding range cover | S | S | S | S |
| Sink cover | S | S | S | S |
| Double-bowl acrylic sink (1 bowl oversized) | S | S | S | S |
| Fire extinguisher | S | S | S | S |
| Wood-tone, T-mold countertops | S | S | S | S |
| Mini blinds | S | S | S | S |

* Light Oak or Pearwood

| Bedroom | 310 | 330 | 335 | 345 |
|---|-----|-----|-----|-----|
| Twin beds with mattresses, bedspreads and headboards | O | O | O | O |
| Queen-size bed with mattress, bedspread and headboard | S | S | S | S |
| TV cabinet and jack | S | S | S | S |
| Upgrade mattress | O | O | O | O |

| Living Area | 310 | 330 | 335 | 345 |
|--|-----|-----|-----|-----|
| Day/night shades throughout | S | S | S | S |
| 19" color TV in dash with full-function remote, antenna booster and jack | S | S | S | S |
| Fantastic power vent | O | O | O | O |
| 100% polypropylene carpeting with stain treatment and padding | S | S | S | S |
| Barrel chair(s) | S | S | S | O |
| Decorator glass in living room overhead cabinet | S | S | S | S |
| Decorator clock and mirror | S | S | S | S |
| Lambrequin window treatments | S | S | S | S |
| Video cassette player and control center | O | O | O | O |

| Bathroom | 310 | 330 | 335 | 345 |
|--|-----|-----|-----|-----|
| Power vent | S | S | S | S |
| Foot-flush toilet | S | S | S | S |
| Tub/shower with surround | N/A | S | S | N/A |
| Shower with surround | S | N/A | N/A | S |
| Glass shower door | S | S | S | S |
| Large custom medicine cabinet with solid oak door and mirror | S | S | S | S |
| Skylight in shower – rectangular | S | S | S | S |
| Wood-tone, T-mold countertops | S | S | S | S |

S = Standard **O = Optional** **N/A = Not Available**

SPECIFICATIONS

| Entry | 310 | 330 | 335 | 345 |
|---|-----|-----|-----|-----|
| Electric entrance step | S | S | S | S |
| Integrated entrance step | S | S | S | S |
| Exterior entry-assist grab handle | S | S | S | S |
| Deadbolt door lock | S | S | S | S |
| White trimmed, radius-top entrance door | S | S | S | S |
| Interior entry handle | S | S | S | S |
| Toolbox in stairwell | S | S | S | S |
| Battery access in stairwell | S | S | S | S |

| Chassis | 310 | 330 | 335 | 345 |
|--|-----|-----|-----|-----|
| Stainless steel wheel liners | S | S | S | S |
| Spare tire | S | S | S | S |
| Front and rear mud flaps | S | S | S | S |
| Radial tires | S | S | S | S |
| Trailer hitch | S | S | S | S |
| Leveling jacks | O | S | S | O |
| 4-speed auto transmission with overdrive | S | S | S | S |
| Aerodynamic front and rear fiberglass caps | S | S | S | S |
| Contoured front bumper | S | S | S | S |
| Emergency start circuit | S | S | S | S |
| Underhood light | S | S | S | S |
| Layer of neoprene vibration dampener | S | S | S | S |
| Wide body | S | S | S | S |

| Exterior | 310 | 330 | 335 | 345 |
|---|-----|-----|-----|-----|
| Utility shower | O | O | O | O |
| Fog lights | O | O | O | O |
| Porch light | S | S | S | S |
| Side-mount awning* | S | S | S | S |
| Awning rail | S | S | S | S |
| Ice White™ smooth fiberglass exterior with DLX graphics | S | S | S | S |
| Paint package – Light Antelope or Willow Green | O | O | O | O |
| Laser stripe | O | O | O | O |
| Locking exterior storage doors | S | S | S | S |
| Full basement 12"-high pass-through storage | S | S | S | S |
| Easy-to-clean, lighted, rotocast storage compartments | S | S | S | S |
| Radius-corner domed roof | S | S | S | S |
| Roof rack | S | S | S | S |
| Roof ladder | S | S | S | S |
| Roof vents | S | S | S | S |
| Rubber roof | S | S | S | S |
| Sewer hose storage | S | S | S | S |
| GFCI receptacle | S | S | S | S |
| White frame radius-corner slider windows | S | S | S | S |

S = Standard O = Optional N/A = Not Available

*Awning not available on 100"-wide models in some locations. Check local regulations for applicable laws.

PAINT PACKAGES



Light Antelope



Willow Green



Laser Stripe

| Utilities | 310 | 330 | 335 | 345 |
|---|-----|-----|-----|-----|
| Dual 6-volt auxiliary batteries | S | S | S | S |
| Battery disconnect | S | S | S | S |
| 30-amp, 120-volt power supply | S | S | S | S |
| Solid-state 45-amp, 12-volt power converter | S | S | S | S |
| 12-volt demand water pump | S | S | S | S |
| 35M-BTU electronic-ignition furnace with infloor duct | S | S | S | S |
| Air conditioner: rear 11.0-BTU ducted central | 0 | 0 | 0 | 0 |
| Air conditioner: 13.5-BTU ducted central | S | S | S | S |
| Air conditioner: 15.0-BTU ducted central | 0 | 0 | 0 | 0 |
| Generator: Onan 5.0 | 0 | 0 | 0 | 0 |
| Generator: Onan 6.5 | 0 | 0 | 0 | 0 |
| Wire for generator with auto changeover | S | S | S | S |
| Telephone hookup | 0 | 0 | 0 | 0 |
| Cable TV hookup | S | S | S | S |
| City water hookup | S | S | S | S |
| Water-heater bypass kit | S | S | S | S |
| 6-gallon gas water heater with electric ignition | S | S | S | S |
| Carbon-monoxide detector | S | S | S | S |
| LP gas detector | S | S | S | S |
| Smoke detector | S | S | S | S |
| Harness 12-volt wiring | S | S | S | S |
| Electronic battery control center | S | S | S | S |
| Enclosed heated holding tanks | S | S | S | S |

| Cockpit | 310 | 330 | 335 | 345 |
|--|-----|-----|-----|-----|
| Burl dash | S | S | S | S |
| Padded vinyl dash with ABS instrument pod | S | S | S | S |
| Dash fans | S | S | S | S |
| Electronically controlled dash air conditioning | S | S | S | S |
| Backup monitor system | 0 | 0 | 0 | 0 |
| Tinted wraparound windshield | S | S | S | S |
| Side-mount power mirrors | S | S | S | S |
| Driver's door with slider window | 0 | 0 | 0 | 0 |
| Ultra leather-insert captain's chairs (set of 2) | 0 | 0 | 0 | 0 |
| Reclining swivel captain's chairs | S | S | S | S |
| Cruise control | S | S | S | S |
| Full instrumentation | S | S | S | S |
| Power steering | S | S | S | S |
| Tilt steering wheel | S | S | S | S |
| Windshield privacy drape | S | S | S | S |
| Floor mats | S | S | S | S |
| Sun visors | S | S | S | S |
| AM/FM cassette stereo | S | S | S | S |
| Map lights | S | S | S | S |
| Drink tray | S | S | S | S |

S = Standard 0 = Optional N/A = Not Available

DESIGNER DETAILS





Your Challenger Motorhome dealer:

JERRY'S TRAILERS & CAMPERS
2601 S. 13th St.
Norfolk, NE 68701
(402) 371-1306

Damon

P.O. Box 2888
Elkhart, IN 46515
800-577-5692
www.DamonRV.com



Go RVingSM



Due to constant product improvements, the equipment, specifications, component parts and standard/optional equipment are subject to change without notice or obligation. Product photography or diagrams may show equipment that is optional. Damon Corporation reserves the right to make changes in prices and models, and to discontinue models without notice or obligation. Components, parts, or chassis may have been manufactured at times other than the model year indicated. All capacities are approximate and dimensions are nominal. All dry weights are based on standard model features and do not include optional features or equipment.

DC 10/98 ©1998 Damon Corporation

Printed in U.S.A.