

1998 ROYAL Travel Trailers & Fifth Wheels



LEADER TO THE GREAT OUTDOORS





# Great New Towables In The Royal Tradition

**Automotive  
"High Gloss"  
Fiberglass  
Sidewalls**

**A Great  
Selection of  
Slide Out  
Floorplans**

**Two-Year  
Structural  
Warranty**

**FREE!  
Owner's Club  
Membership &  
Benefits!**

## Beautiful New Styling.

Coachmen's line of Royal Travel Trailers and Fifth Wheels has always offered upscale features combined with a very affordable price. The 1998 version of the Royal is sure to exceed all your expectations.

You simply won't find a more affordable, High Gloss Fiberglass Sidewall Travel Trailer or Fifth Wheel. The seamless, fiberglass automotive finish, stylish exterior graphics and elegant Royal interior appointments make the Royal the best valued hard-wall towable on the market.

Royal offers a wide selection of floorplans, including several slide out models. Beautiful interior decors and hardwood cabinet doors help give that special look and feel that is worthy of the Royal name. Move up to the Royal and feel the tradition.

## Look Alike? Look Again!

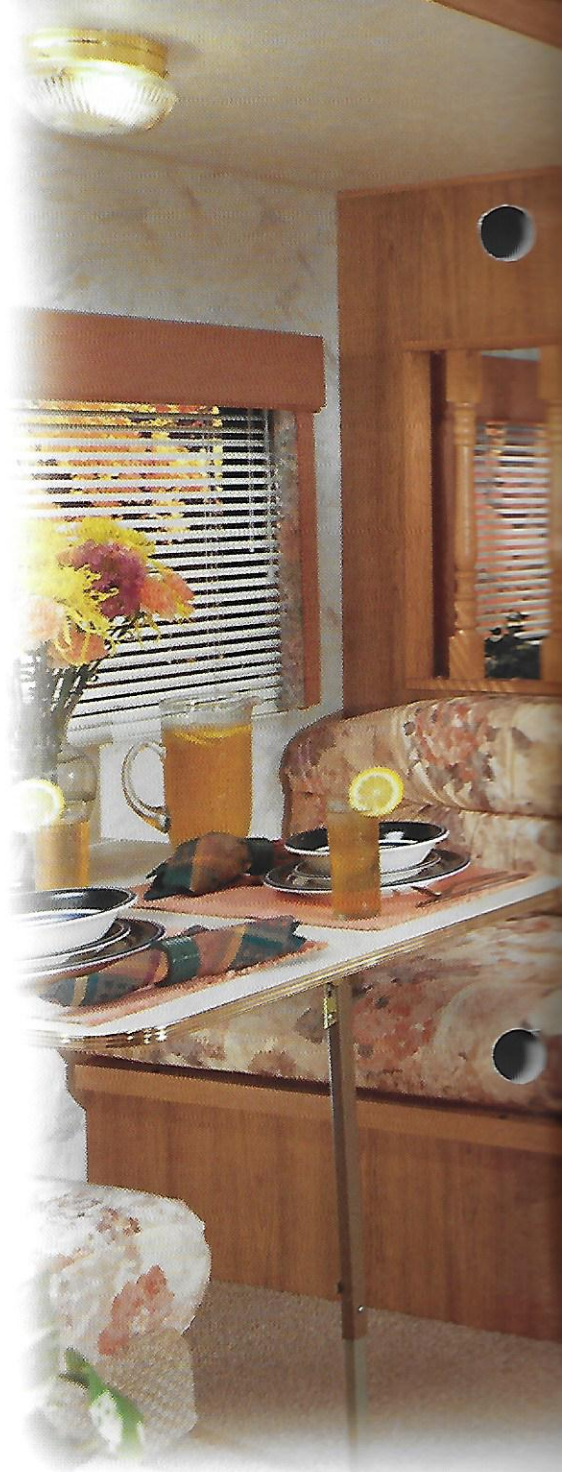
As you step inside Royal Travel Trailers and Fifth Wheels you'll immediately feel the elegance that is created from beautiful upgraded fabrics, stylish residential fixtures and tasteful decors.

Our designers work diligently to insure lasting appeal, because at Coachmen we believe that beauty should be "more than skin-deep."

Here are some of the differences that set Coachmen interiors apart from other brands:

◆ Coachmen selects only upholstery fabrics that are wear-rated as "Heavy Duty." This means that Coachmen fabrics have been tested for durability beyond 15,000 double rubs (in and out action) to simulate heavy usage. To put this in perspective, a chair in the average American home is typically subjected to 3,000 double rubs per year.

◆ Beneath its heavy duty fabrics, Coachmen uses high density foam in its furniture and cushions to protect against premature compression and breakdown. And, dinette cushions are backed with durable, waterproof vinyl.

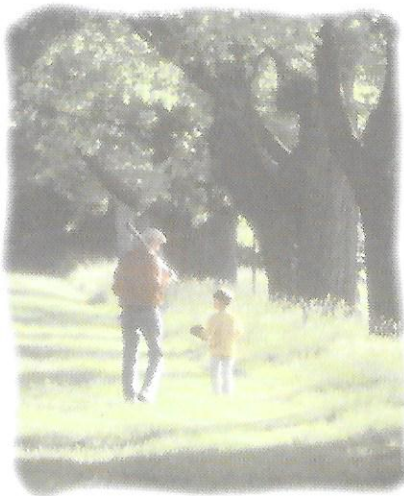


**ABOVE:** Enjoy the amazing space of the 320 RKS Royal Fifth Wheel. Shown in Cameo Corsage.

◆ Coachmen uses only man-made continuous nylon filament fiber semi-trackless carpeting that is Teflon treated for easy cleaning.

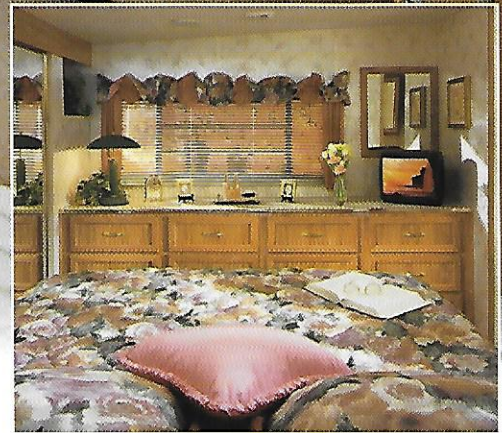
◆ For long term wear, the carpet padding is equally important. Coachmen uses a 3/8" pad that is 70% denser than the industry norm, with an 80 lb. ILD (Indentation Load Deflection) versus a 33 lb. ILD most commonly used.

◆ Royal's beautiful cabinet doors feature real hardwood frames in a beautiful Golden Cherry finish. Unlike other brands,





**ABOVE:** The 297 RKS travel trailer has cabinets galore and plenty of room to stretch out and relax. Shown in Aqua Mist.



**ABOVE:** The slide out bedroom in the 320 RKS provides plentiful closet and drawer space. Shown in Cameo Corsage.

Coachmen's cabinet fronts are solidly screwed and secured to reinforced side-walls.

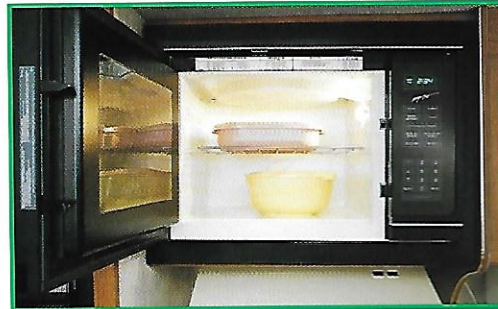
- ◆ Window sizes and configurations are chosen with care, to give you enormous panoramic views and important ventilation.
- ◆ Window treatments are designed for beauty, flexibility of lighting and ventilation, and, most of all, privacy.



# Features Galore!

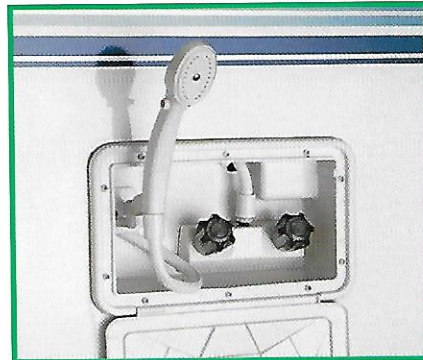
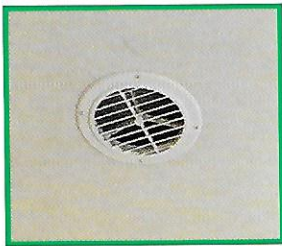


▲ Floor-ducted heat system provides balanced heat distribution. The duct system itself is sealed and insulated to avoid an inefficient loss of heat.



◀ The optional microwave oven boasts a huge 1.3 cu.ft. interior space, making preparation of large dishes a breeze.

Coachmen's optional ducted roof air conditioning system is the best of it's kind. Every angle, seal and vent has been carefully designed for maximum cooling with minimum condensation



▲ The optional outside shower stores away easy with it's retractable hose.



▲ You'll be sure to appreciate the massive storage compartment in Royal fifth wheels.

▶ Our spacious refrigerators feature a convenient interior light, and a handy freezer shelf.



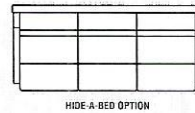
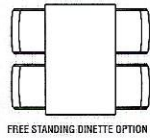
▲ Royal roofs are covered with a seamless rubber skin and feature tapered rafters for superior water runoff and leak prevention.



1998

# Royal Travel Trailers & Fifth Wheels

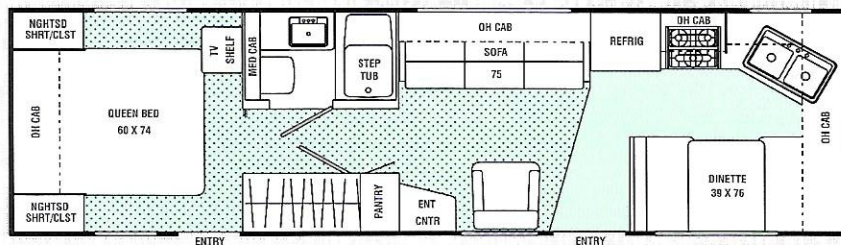
## Floorplans & Technical Specifications

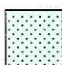


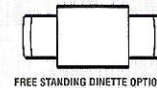
**297rks**  
Rear Kitchen  
Wide Body  
Base Weight  
7867 Lbs.



**298fk**  
Front Kitchen  
Base Weight  
5535 Lbs. EST.

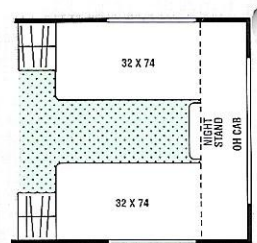
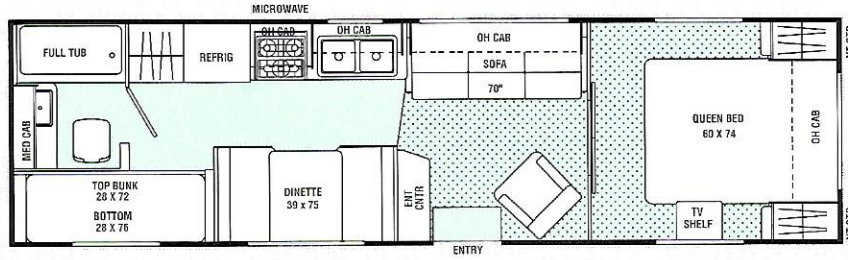


 Indicates Carpeting



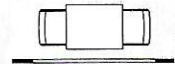
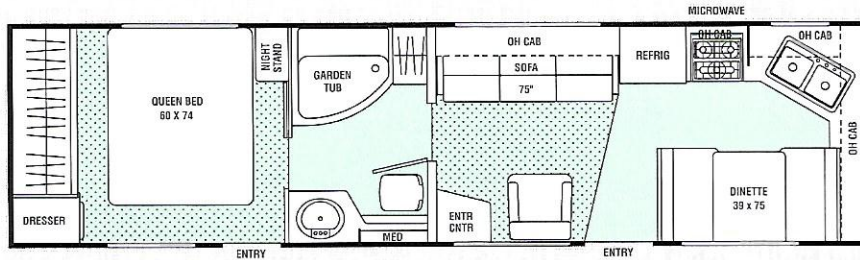
# Royal Travel Trailer Floorplans

**299<sup>tb</sup>**  
**Two Bedroom**  
 Base Weight  
 5577 Lbs.



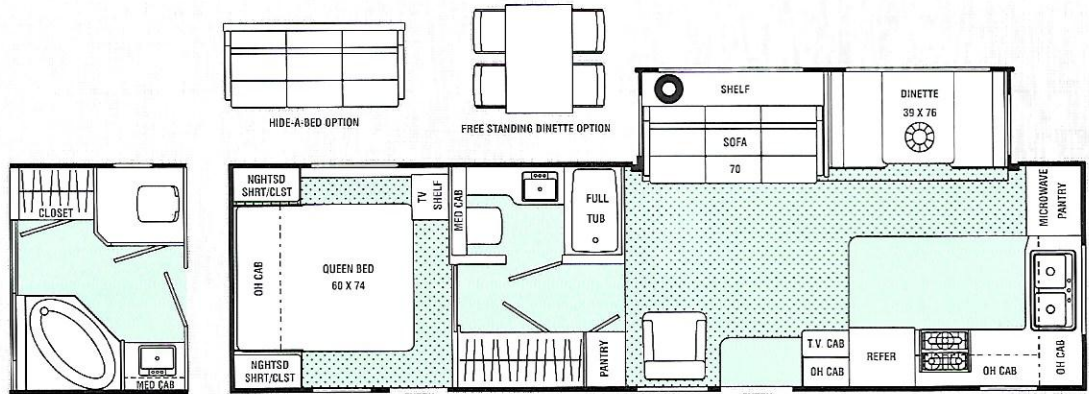
FRONT TWIN BEDS OPTION

**310<sup>wb</sup>**  
**Walk Thru Bath**  
 Base Weight  
 5750 Lbs. EST.

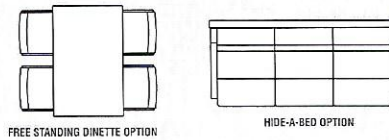


F/S DINETTE OPTION

**324<sup>fks</sup>**  
**Front Kitchen**  
 Base Weight  
 8150 Lbs. EST.



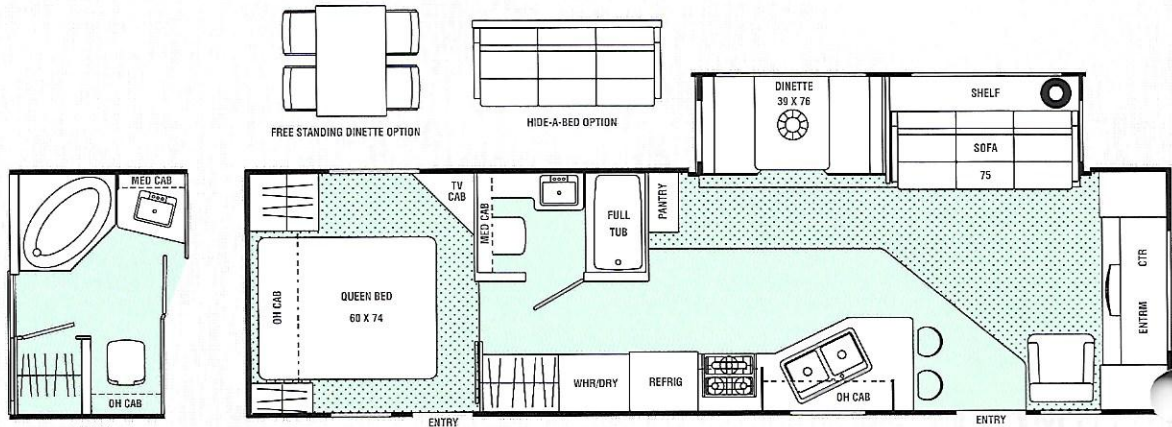
WALK-THRU BATH OPTION



FREE STANDING DINETTE OPTION

HIDE-A-BED OPTION


**338<sup>fls</sup>**  
**Front Lounge**  
**Wide Body**  
 Base Weight  
 8428 Lbs. EST.



WT BATH

ENTRY

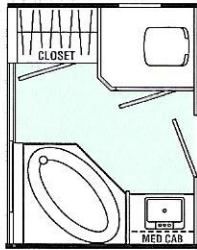
ENTRY

 Indicates Carpeting

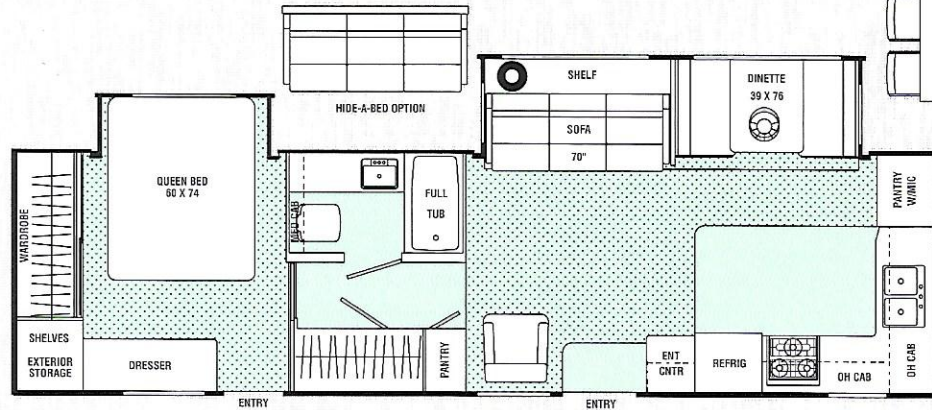
# Royal Travel Trailer Specifications

## 342<sub>ds</sub> Dinette Slide-Out Wide Body

Base Weight 8950 Lbs. EST.



WALK-THRU BATH OPTION



FREE STANDING DINETTE OPTION

	297RKS	298FK	299TB	310WB	324FKS	338FLS	342DS
<b>Base Weight</b>	7,867	5,535†	5,577	5,750†	8,150†	8,428†	8,950†
GVWR	9,130	7,600†	7,600	7,600†	10,000†	10,000†	10,000†
Carrying Capacity	1,263	2,065†	2,023	1,850†	2,100†	1,572†	1,050†
Hitch Weight	1,130	920†	790	970†	1,080†	1,380†	1,300†
Axle Weight	6,737	4,615†	4,787	4,780†	7,070†	7,048†	7,650†
Interior Height	6' 10"	6' 6"	6' 6"	6' 6"	6' 10"	6' 10"	6' 10"
Exterior Height*	10' 3"	9' 3"	9' 3"	9' 3"	10' 4"	10' 4"	10' 4"
Interior Length	31'	30' 8"	31' 10"	32' 10"	32' 9"	33' 8"	34' 2"
Exterior Width	8' 5"	7' 10"	7' 10"	7' 10"	7' 10"	8' 5"	8' 5"
Hitch Pin Height	19"	20"	20"	20"	20"	20"	20"
Sleeping Capacity	6/4	6/4	8/8	6/6	6/4	6/4	6
Fresh Water Capacity (gal)	30	30	30	30	30	30	36
Waste Water Capacity (gal)	40	42	40	32	40	40	40
Grey Water Capacity (gal.)	42	32	32	32	32	42	70
Water Heater Capacity	6	6	6	6	6	6	6
LP Gas Capacity (lb.)	60	60	60	60	60	60	60
Furnace Rating (x 1,000)	31	31	31	31	35	35	40
Tire Size	●	△	△	△	X	X	X

\* Add 10" for Roof Air Conditioner

† = Estimated at time of printing

△ = ST205/75R15C

● = ST225/75R15C

X = ST225/75R15D

**Base Weight:** The weight of the unit with no fluids, cargo, optional equipment or accessories.

**GVWR (Gross Vehicle Weight Rating):** The maximum permissible weight of the unit, including the Base Weight plus all fluids, cargo, optional equipment and accessories. For safety and product performance, do not exceed the GVWR.

**Carrying Capacity:** The difference between the Base Weight and the GVWR. This is the amount of weight available for all fluids, cargo, optional equipment and accessories. The actual "loaded" weight will depend on the equipped unit and the owner's individual choice of cargo, etc.

**Wider Widths:** Numerous Coachmen floorplans feature the "wide body" design concept, which gives you significantly enhanced interior living space and innovative floorplans.

In making your purchase decision, you should be aware that a few states restrict access on some or all state roads to 96" in width, though special road usage permits are generally available. Vehicles up to 102" in width

are permitted on all federal highways, and in the vast majority of states. You may wish to confirm the road usage laws in the states of interest to you before making your purchase decision. If width is of concern to you, we invite you to consider the broad array of other Coachmen models offered in the standard 96" width.

All information contained in this brochure is believed to be accurate at the time of publication. However, during the model year, it may be necessary to make revisions and Coachmen reserves the right to make all such changes without notice, including changes in prices, colors, materials, equipment and specifications, as well as the addition of new models and the discontinuance of models shown in this brochure. Therefore, please consult with your Coachmen dealer and confirm the existence of any materials, design or specifications that are material to your purchase decision.

# Royal Travel Trailer Standards & Options

## Standard Features

### INTERIOR AND DECOR

- ◆ Residential Metal Drawer Glides
- ◆ Home Entertainment Cabinet (338 only)
- ◆ Side Dinette
- ◆ Golden Cherry Cabinets
- ◆ Hardwood Cabinet Doors - Coach & Kitchen
- ◆ Prewired for Satellite Dish
- ◆ Partial Carpet with Pad
- ◆ Linoleum Flooring - Kitchen
- ◆ Mini Blind - Kitchen Coach
- ◆ Radius Windows
- ◆ Mini Blinds - Bedroom (Except with Bunks)
- ◆ Jack Knife Sofa
- ◆ Swivel Rocker
- ◆ Four Prewired Stereo Speakers
- ◆ Cable TV Jack
- ◆ TV Antenna & Rotor Package
- ◆ TV Shelf - Bedroom
- ◆ LP Leak Alarm

### GALLEY

- ◆ Microwave Ready
- ◆ 3-Burner (High Output) Range with Oven
- ◆ Power/Lighted Range Hood
- ◆ Flush Mount Double Door Refrigerator
- ◆ Monitor Panel
- ◆ Stainless Steel Sink
- ◆ Silverware Drawer

### SLEEPING

- ◆ Bunk Beds (299TB)
- ◆ Queen Bed
- ◆ Bedspread and Pillow Shams
- ◆ Deluxe Innerspring Mattress - 312 Coil
- ◆ Bedlift System on Island QB

### ELECTRICAL/HEATING/AC

- ◆ Outside Receptacle GFI
- ◆ Patio Light
- ◆ Off-Door-Side Utility Light
- ◆ LP Light
- ◆ Double 30 LB. LP Bottles w/Auto Change-Over
- ◆ 31,000 BTU E.I. Furnace (297RKS, 298FK, 299TB, 310WB)
- ◆ 35,000 BTU E.I. Furnace (324FKS, 338FLS)
- ◆ 40,000 BTU E.I. Furnace (342DS)
- ◆ In-Floor Ducted Heat
- ◆ Prewired for Roof Air Conditioning

### BATH AND WATER

- ◆ Marine Toilet
- ◆ Power Bath Vent
- ◆ One-Piece ABS Tub Surround
- ◆ 6-Gallon Water Heater
- ◆ Water Heater By-Pass
- ◆ Demand Water Pump
- ◆ Decorative Bath Hardware
- ◆ Medicine Cabinet

### EXTERIOR/CONSTRUCTION

- ◆ Automatic Finish Sidewalls
- ◆ Straight Axles (STD on Side Models)
- ◆ Retractable Stabilizer Jacks (STD on Slide Models)
- ◆ Hydraulic Slide-Out Room (All Slide Models)
- ◆ Rubber Roof
- ◆ Fiberglass Insulation
- ◆ Gutter Rail
- ◆ Double Entry Step - Primary Door (298FK, 299TB, 310WB)
- ◆ Secondary Entrance Door (Except 297, 299)
- ◆ Triple Entry Steps at Primary Door (297, 324, 338, 342)
- ◆ 30" Wide Entrance Door
- ◆ Dead Bolt Lock(s)
- ◆ Rear Hose Storage Steel Bumper
- ◆ Rally Wheels
- ◆ Radial Tires

## Optional Features

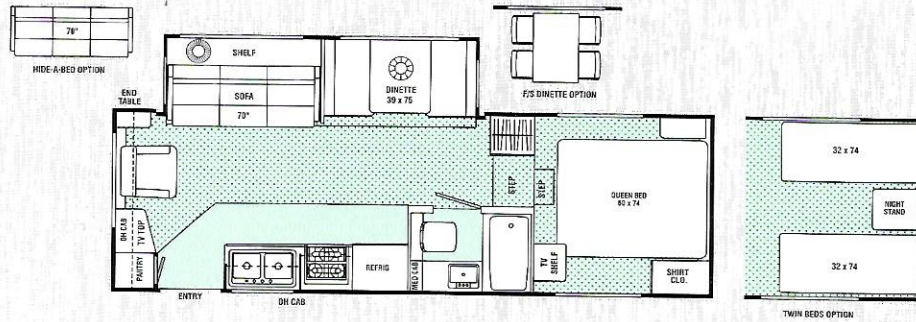
- ◆ Two Bar Stools (338 FLS)
- ◆ Free Standing Dinette (298FK,310WB) (Includes 2 Chairs)
- ◆ Deluxe Sofa w/Hide-A-Way Bed (297RKS, 324FKS, 338FLS, 342DS)
- ◆ Twin Beds (297RKS, 299TB)
- ◆ Free-Standing Wood Dinette w/4 Chairs (297RKS, 324FKS, 338FLS, 342DS)
- ◆ Phone Jack
- ◆ Wall Hugger - Recliner
- ◆ Walk Thru Bath (324FKS, 338FLS, 342DS)
- ◆ 50 Amp. Service (299TB & Up) (Mandatory with 2nd Roof A/C and Wire and Frame for 2nd A/C Options)
- ◆ LP Bottle Cover
- ◆ Residential Style AM/FM Cassette Stereo
- ◆ Outside Entertainment Center
- ◆ Large Flush Mount Double Door Refrigerator
- ◆ Residential Size Microwave Oven - 1.3 Cu.Ft.
- ◆ Combo: Washer and Dryer (338 FLS) (Includes Plumbing and 10 Gallon Gas/Electric E.I. Water Heater)
- ◆ 6 Gallon Gas/Electric E.I. Water Heater
- ◆ 10-Gallon Gas/ Electric E.I. Water Heater (338FLS)
- ◆ Outside Shower
- ◆ Tinted Safety Glass - Radius Windows (Safety Glass is Mandatory in Certain States)
- ◆ Ducted Roof Air Conditioning
- ◆ 2nd 13,500 BTU Roof Air Conditioner (299TB & Up)
- ◆ Wire and Frame For 2nd A/C (299TB & UP)
- ◆ Power Hitch Jack
- ◆ Spare Tire Kit
- ◆ Retractable Stabilizer Jacks (Non-Slide Models) (Standard on Slide Models)
- ◆ Straight Axle (Non Slide Models) (Standard on Slide Models)
- ◆ Slide-Out Room Awning - (Off Door Side)
- ◆ Slide-Out Awning Bedroom (342DS)
- ◆ Awning
- ◆ CSA Upfit (Mandatory for All Canadian Provinces)(Except on Wide Body Units)

# Royal Fifth Wheel Floorplans

## 251rls

Rear Lounge

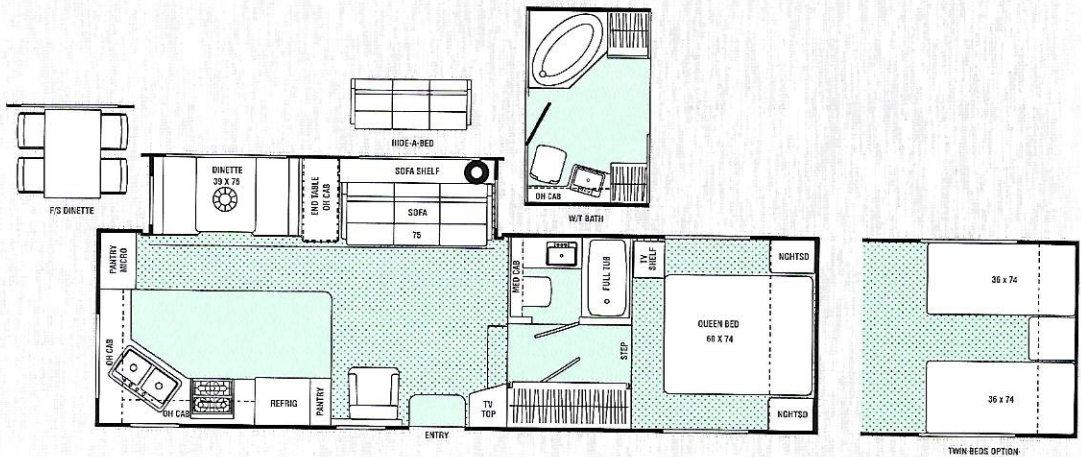
Base Weight  
6900 Lbs. EST.



## 285rks

Rear Kitchen  
High Profile  
Wide Body

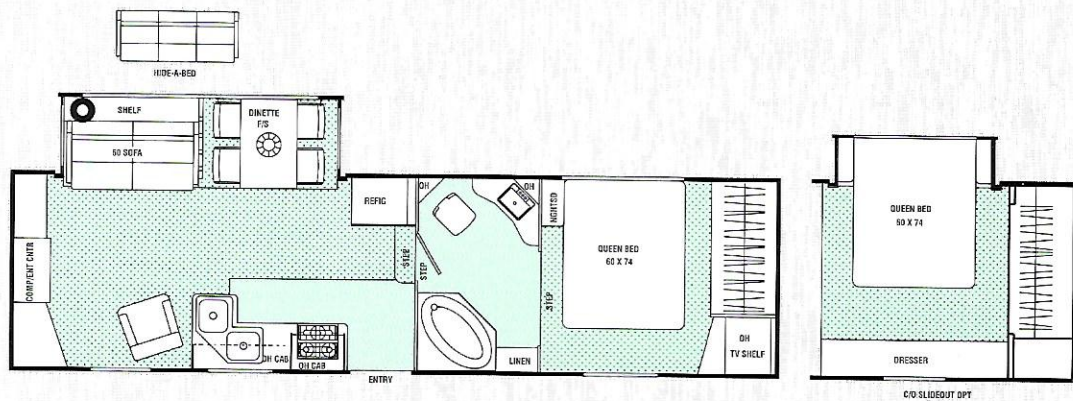
Base Weight  
9231 Lbs.



## 319rls

Rear Lounge  
High Profile  
Wide Body

Base Weight  
9910 Lbs.

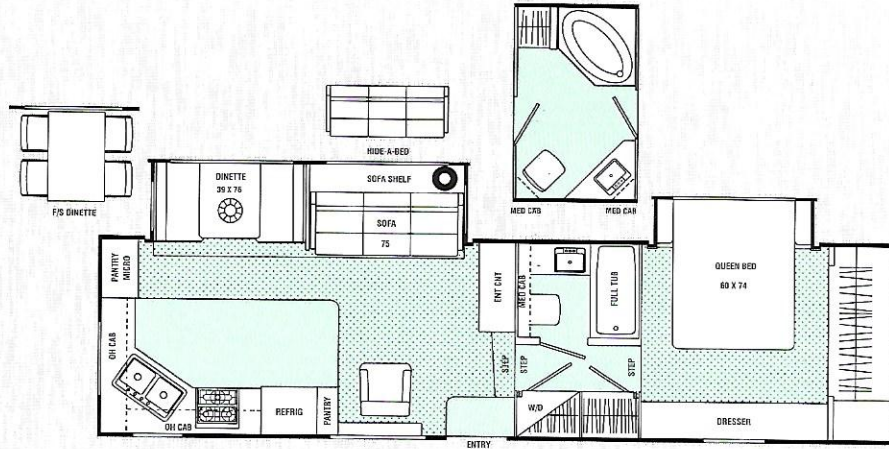


Indicates Carpeting

# Royal Fifth Wheel Floorplans

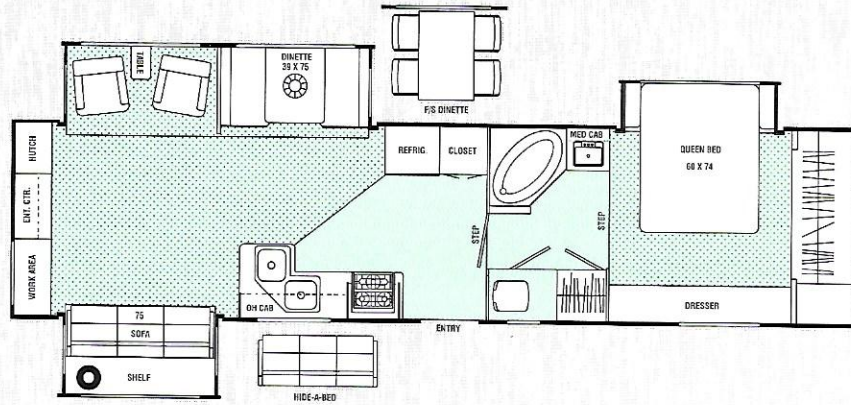
## 320rks

Rear Kitchen  
High Profile  
Wide Body  
Base Weight  
10150 Lbs. EST.



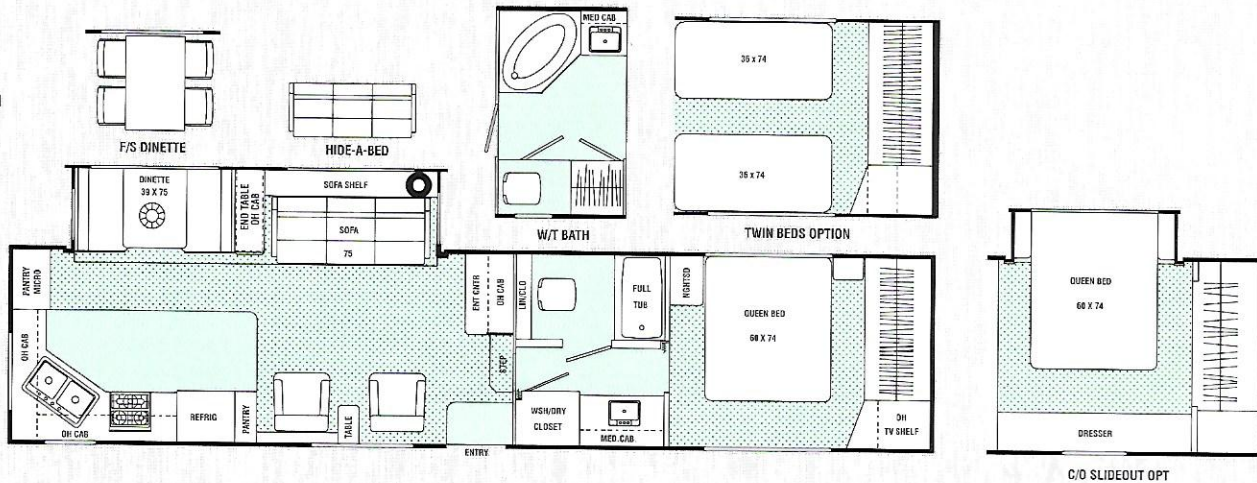
## 358rlts


Rear Lounge  
High Profile  
Wide Body  
Base Weight  
11275 Lbs. EST.



## 360rks

Rear Kitchen  
High Profile  
Wide Body  
Base Weight  
10525 Lbs. EST.



 Indicates Carpeting

# Royal Fifth Wheel Specifications

	251RLS	285RKS	319RLS	320RKS	358RLTS	360RKS
<b>Weight</b>	<b>6,900†</b>	<b>9,231</b>	<b>9,910</b>	<b>10,150†</b>	<b>11,275†</b>	<b>10,525†</b>
GVWR	9,350†	11,970	14,630	14,400†	14,700†	14,650†
Carrying Capacity	1,450†	2,739	4,720	4,250†	3,425†	4,125†
Hitch Weight	1,350†	1,970	2,630	2,400†	2,700†	2,650†
Axle Weight	5,550†	7,261	7,280	7,750†	8,575†	7,875†
Interior Height	6' 10"	6' 10"	6' 10"	6' 10"	6' 10"	6' 10"
Exterior Height*	11' 1"	11' 10"	11' 11"	11' 11"	11' 11"	11' 11"
Exterior Length	25' 9"	30' 8"	32' 1"	32' 10"	35' 11"	36' 9"
Exterior Width	7' 10"	8' 5"	8' 5"	8' 5"	8' 5"	8' 5"
Hitch Pin Height	45	45	45	45	45	45
Sleeping Capacity	6	6/4	4/6	4/6	6	4/6
Fresh Water Capacity (gal.)	42	53	53	53	53	53
Waste Water Capacity (gal.)	40	48	48	48	48	48
Grey Water Capacity (gal.)	42	48	48	48	48	48
Water Heater Capacity	6	6	6	6	6	6
LP Gas Capacity (lb.)	60	60	60	60	60	60
Furnace Rating (x 1,000)	31	31	31	35	40	40
Tire Size	●	X	□	□	□	□

\* Add 10" for Roof Air Conditioner

† = Estimated at time of printing

● = ST225/75R15C

□ = LT235/85R16E

X = ST225/75R15D

**Base Weight:** The weight of the unit with no fluids, cargo, optional equipment or accessories.

**GVWR (Gross Vehicle Weight Rating):** The maximum permissible weight of the unit, including the Base Weight plus all fluids, cargo, optional equipment and accessories. For safety and product performance, do not exceed the GVWR.

**Carrying Capacity:** The difference between the Base Weight and the GVWR. This is the amount of weight available for all fluids, cargo, optional equipment and accessories. The actual "loaded" weight will depend on the equipped unit and the owner's individual choice of cargo, etc.

**Wider Widths:** Numerous Coachmen floorplans feature the "wide body" design concept, which gives you significantly enhanced interior living space and innovative floorplans.

When making your purchase decision, you should be aware that a few states restrict access on some or all state roads to 96" in width, though special road usage permits are generally available. Vehicles up to 102" in width

are permitted on all federal highways, and in the vast majority of states. You may wish to confirm the road usage laws in the states of interest to you before making your purchase decision. If width is of concern to you, we invite you to consider the broad array of other Coachmen models offered in the standard 96" width.

All information contained in this brochure is believed to be accurate at the time of publication. However, during the model year, it may be necessary to make revisions and Coachmen reserves the right to make all such changes without notice, including changes in prices, colors, materials, equipment and specifications, as well as the addition of new models and the discontinuance of models shown in this brochure. Therefore, please consult with your Coachmen dealer and confirm the existence of any materials, design or specifications that are material to your purchase decision.

# Royal Fifth Wheel Standards & Options

## Standard Features

### INTERIOR AND DECOR

- ◆ Golden Cherry Cabinets
- ◆ Residential Metal Drawer Glides
- ◆ Carpet with Pad - Living Room
- ◆ Carpet - Bedroom
- ◆ Linoleum Flooring - Kitchen & Bath
- ◆ Mini Blind - Kitchen
- ◆ Mini-Blinds - Coach
- ◆ Mini-Blinds - Bedroom
- ◆ Hardwood Cabinet Doors - Coach and Kitchen
- ◆ Free Standing Dinette (319RLS)
- ◆ Radius Windows
- ◆ Side Dinette (Except 319RLS)
- ◆ Jack Knife Sofa
- ◆ Swivel Rocker
- ◆ Four Prewired Stereo Speakers
- ◆ Pre-Wired for Satellite Dish
- ◆ TV Antenna & Rotor Package
- ◆ Cable TV Jack
- ◆ TV Shelf - Bedroom
- ◆ LP Leak Alarm
- ◆ Trash Can (285 and Larger)

### GALLEY

- ◆ Microwave Ready
- ◆ 3-Burner (High Output) Range with Oven
- ◆ Power/Lighted Range Hood
- ◆ Flush Mount Double Door Refrigerator
- ◆ Monitor Panel
- ◆ Stainless Steel Sink
- ◆ Silverware Drawer

### SLEEPING

- ◆ Queen Bed
- ◆ Deluxe Innerspring Mattress - 312 Coil
- ◆ Bedspread and Pillow Shams
- ◆ Bedlift System on Island QB

### ELECTRICAL/HEATING/AC

- ◆ 30-Amp. Power Cord
- ◆ GFI Circuit
- ◆ Outside Receptacle GFI
- ◆ Patio Light
- ◆ Off-Door-Side Utility Light
- ◆ Hitch Light
- ◆ Double 30 LB. LP Bottles w/Auto Change-Over
- ◆ In-Floor Ducted Heat
- ◆ 31,000 BTU E.I. Furnace (251RLS, 285RKS, 319RLS)
- ◆ 35,000 BTU E.I. Furnace (320RKS)
- ◆ 40,000 BTU E.I. Furnace (358RLTS, 360RLS)
- ◆ Prewired for Roof Air Conditioning

### BATH AND WATER

- ◆ Marine Toilet
- ◆ Power Bath Vent
- ◆ One-Piece ABS Tub Surround
- ◆ 6-Gallon Water Heater
- ◆ Water Heater By-Pass Valve
- ◆ Demand Water Pump
- ◆ Decorative Bath Hardware
- ◆ Medicine Cabinet

### EXTERIOR/CONSTRUCTION

- ◆ Rubber Roof
- ◆ Fiberglass Insulation
- ◆ Triple Entry Step - Primary Door
- ◆ Dead Bolt Lock(s)
- ◆ Rear Hose Storage Steel Bumper
- ◆ Hydraulic Slide Room
- ◆ Retractable Stabilizer Jacks
- ◆ Rally Wheels
- ◆ Radial Tires
- ◆ Awning Rail
- ◆ 30" Wide Entrance Door

## Optional Features

- ◆ Twin Beds (Except on 319RLS, 320RKS, 358RLTS)
- ◆ Free-Standing Dinette with Four Chairs (STD 319RLS)
- ◆ Deluxe Sofa w/Hide-A-Bed
- ◆ Residential AM/FM Cassette Stereo
- ◆ Outside Entertainment Center
- ◆ Combo Washer/Dryer (320RKS, 360RKS) (Includes Plumbing and 10-Gallon Gas/Electric E.I. Water Heater) (Requires 50 Amp. Service)(Only with Standard Bath in 320)
- ◆ Phone Jack
- ◆ Wall Hugger Recliner
- ◆ 2nd Wall Hugger Recliner (358RLTS, 360RKS)
- ◆ Flush Mount, Large, Double Door Refrigerator
- ◆ Residential Size Microwave Oven -1.3 Cu.Ft.
- ◆ 6 Gallon Gas/Electric E.I. Water Heater
- ◆ 6-Gallon Electronic Ignition Water Heater
- ◆ 10 Gallon Gas/Electric E.I. Water Heater (Except on 251RLS, 285RKS)
- ◆ Walk-Thru Bath (285RKS, 319RLS, 320RKS, 360RKS)
- ◆ Outside Shower
- ◆ Ceiling Fan
- ◆ Tinted Safety Glass - Radius Windows (Safety Glass is Mandatory in Certain States)
- ◆ Ducted Roof Air Conditioning
- ◆ 2nd 13,500 BTU Roof Air Conditioner (Requires 50 Amp. Service for California)
- ◆ Wire and Framed For 2nd Roof Air Conditioner (Requires 50 Amp. Service for California)
- ◆ 7.0 Generator (Except 251RLS, 285RKS)
- ◆ Generator Ready (Except 251RLS, 285RKS)
- ◆ 50-Amp. Service (Mandatory with 2nd Roof A/C and Wire and Frame for 2nd A/C options)
- ◆ Electric Front Jack(s)
- ◆ Spare Tire Kit (251RLS) on Rear Bumper
- ◆ Spare Tire Kit Under Floor (285RKS thru 360RKS)
- ◆ Luggage Rack and Ladder
- ◆ Shock Absorbers
- ◆ Awning
- ◆ Bedroom Slide-Out (319RLS, 360RKS, STD on 320RKS, 358RLTS)
- ◆ Slide-Out Room Awning (Off Door Side)
- ◆ Slide-Out Room Awning-Doorside (358RLTS)
- ◆ Slide-Out Awning Bedroom (Except 251RLS, 285RKS)
- ◆ CSA Upfit (Except on Wide Body Units)



# What You Can't See Usually Counts The Most.

Coachmen believes its owners are entitled to quality and sturdy construction even if it's hidden from view. Hidden quality does cost more, and the uneducated buyer may not always understand the difference. But, those differences can be critical to long-term satisfaction and future resale value.

"Hidden" quality features from Coachmen include:

## All Copper L.P. Lines

Most brands use copper at the appliances, then switch to a much less expensive black steel pipe under the floor.

Coachmen uses copper tubing for its entire L.P. gas system, inside and outside the coach. Further, the copper tubing is mechanically double-flared at the fittings, to provide a stronger, 2-ply seal. Under the coach, care is taken to run the copper lines encased in a plastic sleeve through the frame,



so they are protected from potential road damage.

## Superior Undercarriage

To protect the underside of the unit from road damage and the elements, Coachmen installs Darco, a rugged fiber-laminated polypropylene material, along the undercarriage. Darco has the highest puncture and solvent resistance, and passes the surface burn requirements of F.M.V.S.S. #302. Don't be fooled by less-expensive, look-alike materials used by other brands, which offer inferior protection.

## Structurwood® Floor

Consistent with residential construction, Coachmen uses Structurwood for its flooring, which has been proven to be 10% stronger, and resists water absorption far better than plywood.

## Box Channel Steel Frame

Coachmen uses a heavy-gauge cambered "Box" steel frame with cross-members on 48" centers. The entire frame is primed and painted with two rust inhibiting coats of paint.

Some brands use a Box channel on the visible parts of the frame, then switch to the weaker and less expensive "C" channel for the hidden undercarriage.

## High Gloss Fiberglass Sidewalls

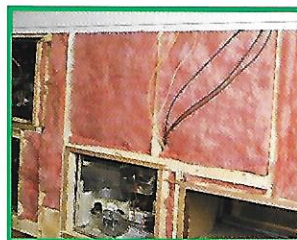
Royal Travel Trailers and Fifth Wheels are covered in a beautiful high gloss fiberglass outer skin. The seamless hardwall exterior finish is more attractive and also prevents leaks.



Beneath our high gloss fiberglass is high quality #2 Grade North American lumber, with roofs and sidewalls on 16" centers.

## Insulation

Coachmen towable products feature Owens-Corning spun fiberglass insulation. Its R-7 rating is 40% greater than many competitors. Each piece of insulation is carefully measured, and packed into every crevice by hand, then mechanically secured. This costly process insures insulation protection that



does not shift downward with vibration.

Be sure to check out these and other hidden quality features,

to ensure your long-term pleasure and peace of mind.

## Buyer's Checklist

To help you make an informed purchase decision you'll enjoy for many years to come, refer to this list of Coachmen features. Please compare us to the competition!

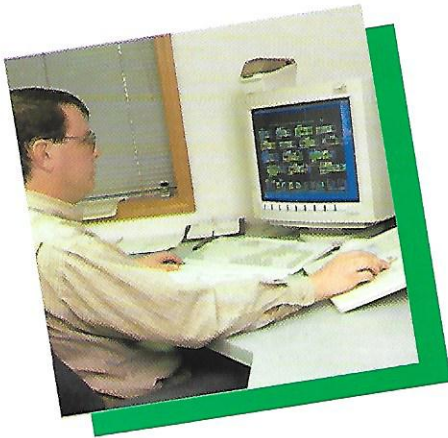
- ✓ Hydraulic Slide Room System.
- ✓ Seamless automotive high gloss exterior finish
- ✓ Box-channel cambered steel frame, primed and painted with two coats
- ✓ Darco undercarriage shield
- ✓ Wheel-well undercoating
- ✓ Copper L.P. lines; entire system
- ✓ Crowned, seamless roof for water protection
- ✓ Owens-Corning R-7 insulation, hand cut and packed
- ✓ 2"x 2" North American #2 grade wall studs, on 16" centers
- ✓ 2"x 6" door headers with 2"x 4" door jambs
- ✓ 110 Volt Electrical wiring routed through studs and protective metal sleeves
- ✓ Finished and sealed exterior storage compartments
- ✓ Heavy-duty, stain resistant upholstery
- ✓ Stain-repellent carpet and superior padding
- ✓ Optimum window design; sliders and jalousies
- ✓ Wood door frame/cabinet construction
- ✓ Residential drawer glide system
- ✓ Silverware and utensil drawer
- ✓ Tub/shower liner
- ✓ Bed lift system
- ✓ Deluxe 312 coil innerspring mattress
- ✓ Two-Year Structural Warranty

# Up-Front Design For Long Term Comfort.

Founded in 1964, Coachmen is one of the oldest, continuous producing manufacturers of recreational vehicles. A secret of our success is our commitment to the continuous improvement of our products.

We have learned that quality must be designed and built in to the products, up front. Combining experience and technology, we are able to prevent many problems before they arise, through proper analysis and testing. Coachmen goes the extra mile to provide our customers with quality products.

## Design & Analysis



It is now fairly common for companies to use C.A.D. as a drafting tool. Coachmen, however, takes computerized technology far beyond elementary applications.

Coachmen uses computers to see that everything fits—up front—so we can minimize gimp, trims and other “cover-up” techniques seen so often in other brands.

Computer weight testing is performed on every new model. Before a floorplan is approved for production, we know the approximate weights, including dry and loaded, front and rear axle weights and even side-to-side weights which affect towability. After a model is built, the computer analysis is manually verified.

Another important use of the computer is Coachmen’s unique utilization of Finite Element Analysis. This technique, based on computer modeling, enables Coachmen to predict, and avoid, many problems caused by inappropriate stress. Examples of analysis and proof of validity include our cambered frame and cross-member design, the thickness and composition of our flooring and our slide rooms and their impact on the structural integrity of the entire coach.

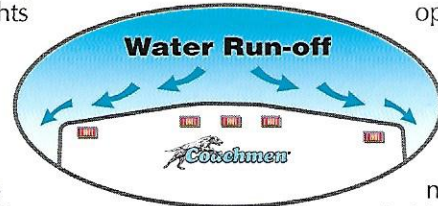
With this investment in technology, we try to anticipate and solve problems before they occur.

## Leak Prevention



Due to the complexity of the product, compounded by road vibration, water leaks can be a problem. Coachmen’s quest is to eliminate this frustrating and potentially damaging problem.

Our outer skins are seamless, and every corner—at the roof, floor and side-walls—is wrapped, sealed and secured.



All roof and sidewall openings receive framing reinforcement, and are sealed with a non-shrinking, pliable silicone.

To promote water drainage and leak protection, the Lite roofs have tapered rafters and a one-piece sealed aluminum outer skin.

Finally, every unit we produce is tested for leaks in a high-pressure rain chamber, designed to simulate a driving rain, not just a spring shower.

## Performance Testing



Coachmen does not want, nor expect, our customers to be the “proving ground.” We believe it is our job to adequately test our products, before they reach our customers.

Coachmen subjects its new models to a myriad of advance tests, before introduction to the customer. Rigorous road tests, sometimes up to 15,000 simulated miles, are performed on actual production units, to verify computer modeling. Studies are made of structural integrity, stress analysis, cabinetry durability, weight loading, vibration analysis and handling.

There can be little doubt that Coachmen has superior quality—by design.

# A Warranty To Count On.

## Buckstopper Warranty

We work very hard to see that our products out-perform your expectations. But, should something go wrong with the workmanship or materials during the warranty period, we will fix it. As the saying goes, the buck stops here.

Your Owner's Registration Card and our famous Buckstopper Warranty are your passport to worry-free travel. Throughout the United States and Canada, our network of over 300 independent dealers stands ready to provide you with courteous, dependable service.



## Two-Year Structural Warranty

We are very confident about our products, for reasons explained in this brochure. Our owners share in our confidence, with Coachmen's exclusive TWO-YEAR LIMITED STRUCTURAL WARRANTY. Only with Coachmen do you receive extended peace of mind and warranty coverage for your floor, ceiling assembly and any laminated structural components.

## Transferable Warranty

Your Buckstopper Warranty may be transferred to a subsequent owner for a small registration fee, if you sell your coach during the term of your one-year Buckstopper Warranty. This feature greatly enhances the resale value of your Coachmen product. (Sorry, the Extended Limited Structural Warranty may not be transferred.)

When making your purchase decision, you should select a company you can count on, with a warranty you can depend on. **Nobody protects you better than Coachmen...for the long haul!**

See your Coachmen dealer for complete details on our generous warranty program.

# Friends & Fun For Life.

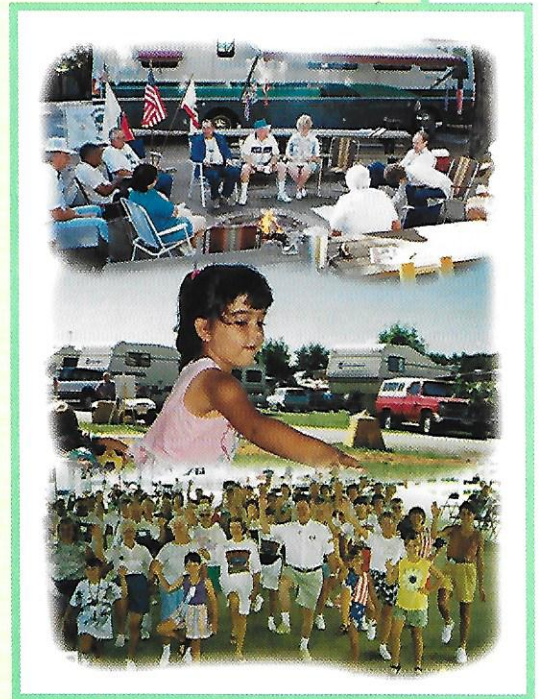
Your purchase of a Coachmen recreational vehicle qualifies you for a **free, one-year membership** in the International Coachmen Caravan, the nation's largest manufacturer sponsored RV club. Consisting of over 20,000 member families, the Coachmen Caravan was formed in 1966 to help our owners enjoy RV ownership to the fullest.

With Coachmen, unlimited opportunities exist for you and your family to form lifelong friendships; improve and share your unique talents, skills and crafts; be active in running your club; and exchange ideas, information and helpful hints—all these, plus the many benefits outlined below, are uniquely yours through the International Coachmen Caravan.

## Incredible Membership Benefits

In addition to automatically expanding your circle of friends, your Caravan membership brings you a multitude of benefits:

- Free \$5,000 Accidental Death and Dismemberment Insurance policy, with additional policies available for \$5 a year.
- Emergency road service and RV insurance at low rates.
- Free trip-planning service.
- 10% Discounts at over 3,500 campgrounds in the U.S. and Canada.
- Free annual Campground Directory.
- Hassle-free group travel to popular destinations.
- Free lost-key return service.
- Organized campouts, meetings and parties.
- Free subscription to COACHMEN CAPERS, the club's quarterly magazine.
- Annual International Rally Week.
- A Coachmen Caravan MasterCard with no annual fee and low interest.



- Free I.D. card, Caravan key ring, vehicle decals and I.D. numbers.
- Discounts on club clothing, accessories, film developing and selected RV publications.

## The Company

# Coachmen: Leader To The Great Outdoors

Coachmen Recreational Vehicle Company has manufacturing facilities in Middlebury, Indiana, Fitzgerald, Georgia, and Grants Pass, Oregon, and occupies over 600,000 square feet on nearly 120 acres. The Coachmen name is one of the most recognized names in our industry, and our products provide recreational enjoyment throughout North America and Europe.

From our beginning in 1964, we have been, "Dedicated to the Enrichment of Your Life." You will find proof of this dedication in our innovative and user-friendly products and our smorgasbord of customer benefits and services.

We are driven by a deep concern for your safety, comfort, pride of ownership and pleasure—in short, **your satisfaction.**

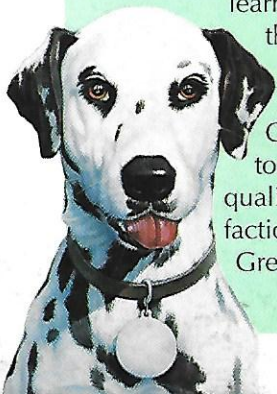
Coachmen knows what it takes to make an RV great. Join us! We'll lead the way to the great outdoors.



*Come visit us at our Oregon facility (above left), our Georgia facility (above right), or our Complex in Indiana (top) where you can relax at our Visitor's Center (above center) and enjoy guided tours of the assembly plants.*

### Meet Pete The Coachmen Dalmatian.

Pete, the Dalmatian, has been a vital part of Coachmen since 1964, when he joined our newly formed company as watchdog, playmate and friend. Pete became our official mascot when we learned that, coincidentally, the Dalmatian is the official "coach dog." Since then, Pete has guided Coachmen and America to the best in products, quality and customer satisfaction. Follow Pete to the Great Outdoors.



**JERRY'S TRAILERS & CAMPERS**  
2601 S. 13th St.  
Norfolk, NE 68701



Visit Our Website At: [www.coachmenrv.com](http://www.coachmenrv.com)

P.O. Box 30, Middlebury, IN 46540 • P.O. Box 948, Fitzgerald, GA 31750

