

1998 RANGER & SPORT Truck Campers



**Coachmen**<sup>®</sup>

LEADER TO THE GREAT OUTDOORS





# Always Ready For The Great Outdoors!

**Ranger,  
Ready For All  
Seasons**

**Affordable  
Sport  
Generously  
Equipped**

**Two-Year  
Structural  
Warranty**

**FREE!  
Owner's Club  
Membership &  
Benefits!**

## Ranger Is Always Ready For Any Season.

Ranger Truck Campers by Coachmen are ready for the challenges of any or all seasons. Ranger's fully laminated and insulated aluminum-framed construction makes it ideal for wherever and whenever you prefer to camp.

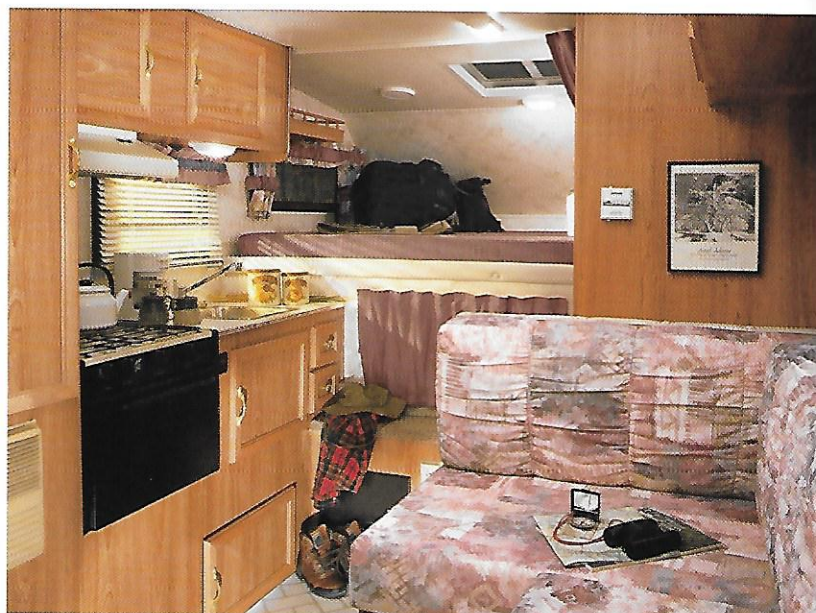
Bright polar white smooth fiberglass and contemporary graphics combine to give Ranger a distinctive and attractive look. Tastefully coordinated interior decors and appointments provide that special feel for a comfortable camping experience.

Features such as an available "dry" bathroom, standard queen-sized bed, high output, three-burner range top, basement storage, enclosed heated tanks and exterior shower help make Ranger a great choice for value and livability.

## Economical Sport Provides Outstanding Value.

Combining affordability with popular standard features, the Sport truck camper is an outstanding value.

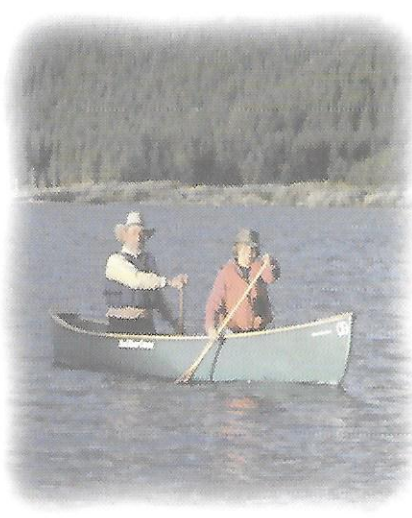
Sport is generously equipped with features such as three burner, high output range top, large single door refrigerator, luggage rack and ladder, enclosed



**ABOVE: Relax after an active day in the Sport 095 SD. Shown in Copper Canyon.**

heated fresh water tanks and a queen bed in the cabover. All you need to enjoy the great outdoors.

Sport truck camper is ready for your outdoor adventures.



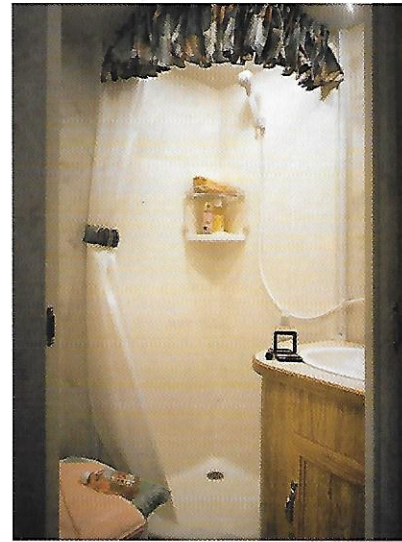
# Features Galore



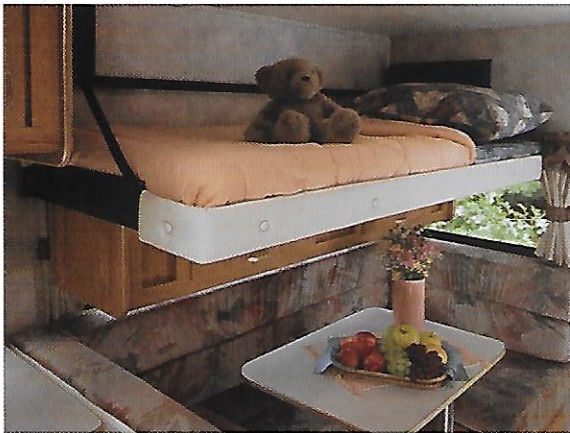
**ABOVE:** The Ranger 115 SL provides comfortable and efficient living space. Shown in Silver Aspen.



▲ Ranger's integrated bumper features a swing down step and handy, lockable storage.



◀ This one-piece molded fiberglass shower is available in two Ranger floorplans.

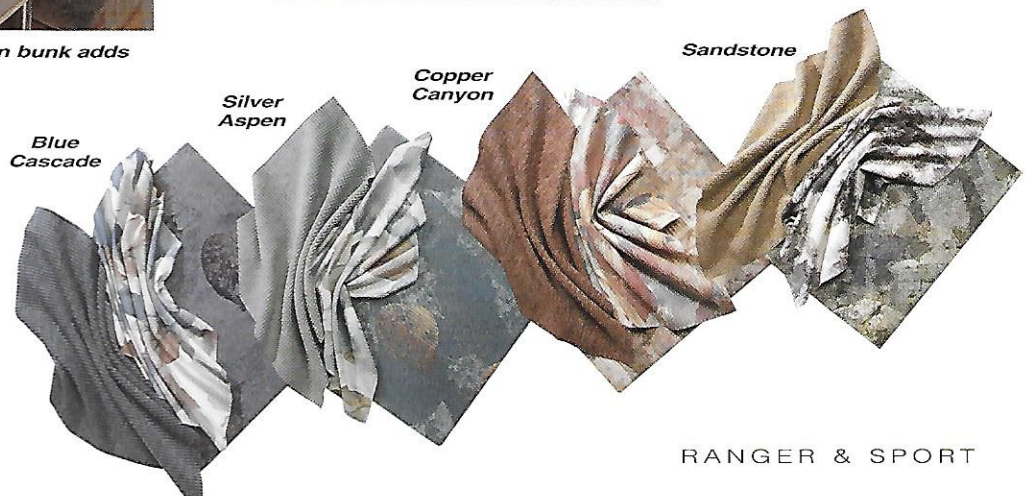


▲ The optional hide-a-bed, swing-down bunk adds to your camper's sleeping capacity.



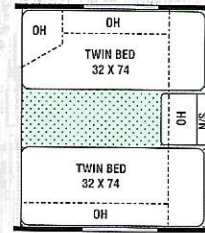
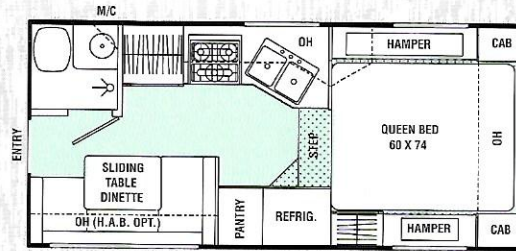
◀ Ranger and Sport both have increased visibility with the addition of the large lower window on rear entry doors.

▶ Ranger models feature enclosed and heated tanks and systems as well as basement storage.

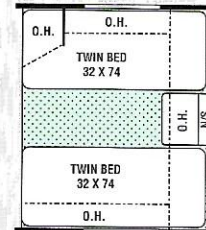
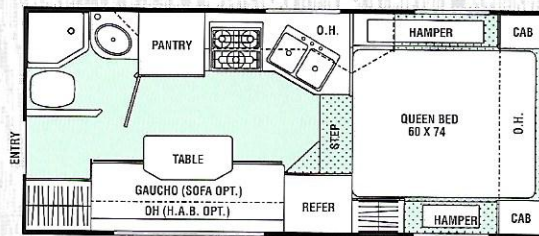


# Truck Camper Floorplans

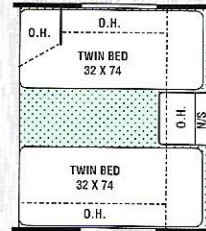
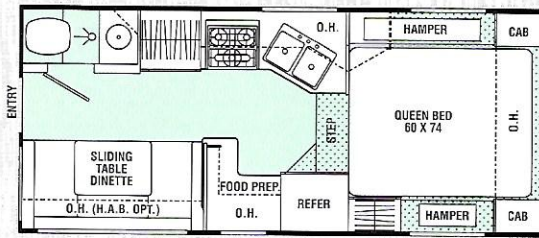
**100<sub>sd</sub>**  
Ranger



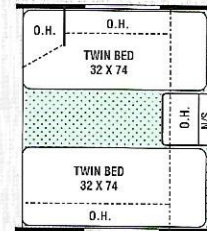
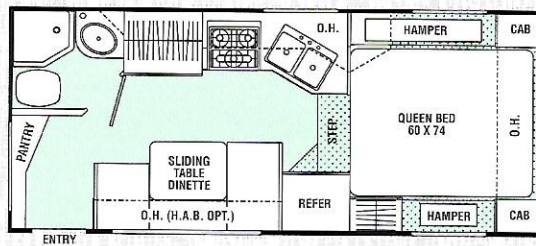
**115<sub>sl</sub>**  
Ranger



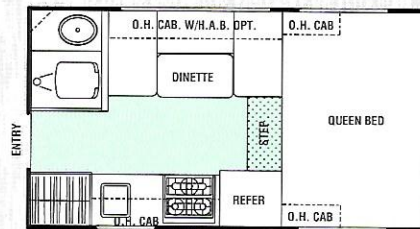
**115<sub>rd</sub>**  
Ranger



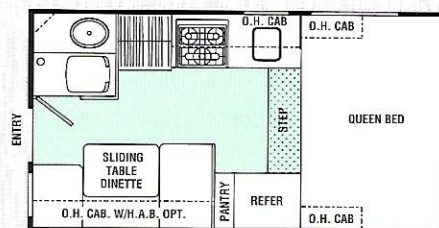
**115<sub>rb</sub>**  
Ranger



**085<sub>sd</sub>**  
Sport



**095<sub>sd</sub>**  
Sport



# Truck Camper Specifications & Features

	RANGER				SPORT	
	100SD	115SL	115RD	115RB	085SD	095SD
Exterior Length (Incl. Cabover)	17'11"	18'8"	18'8"	19'1"	14'5"	15'4"
Exterior Box Length	11'4"	12'1"	12'1"	12'6"	8'11"	9'10"
Interior Height	6'4"	6'4"	6'4"	6'4"	6'7"	6'7"
Exterior Height	8'	8'	8'	8'	7'9"	7'9"
Interior Width	7'5"	7'5"	7'5"	7'5"	7'7"	7'7"
Exterior Width	7'9"	7'9"	7'9"	7'9"	7'8½"	7'8½"
Cabover Headroom	3'1"	3'1"	3'1"	3'1"	2'9"	2'9"
Sleeping Capacity	4/5	4/5	4/5	4/5	4/5	4/5
Fresh Water Capacity (Gal.)	38	38	38	38	20	14
Grey Water Capacity (Gal.)	17	17	17	17	—	12
Waste Tank Capacity (Gal.)	10	15	15	15	10	10
Base Weight (Lbs.)	2,750†	2,889	2,847	2,978	1,981	2,128
Distance for Wheel Well Clearance	3'11¼"	3'11¼"	3'11¼"	3'11¼"	4'	4'
Distance for Tailgate Clearance	4'9½"	4'9½"	4'9½"	4'9½"	4'9"	4'9"
Distance from Front to End of Wheel Well	6'3"	6'3"	6'3"	6'3"	6'3¼"	6'3¼"
Distance from Back of Wheel Well to End of Truck Bed	2'3"	2'3"	2'3"	2'3"	2'2"	2'2"
Rear Overhang	2'0"	2'9"	2'9"	3'2"	5"	1'4"
Distance from Floor to Cabover	3'9½"	3'9½"	3'9½"	3'9½"	3'9½"	3'9½"
Distance from Front Wall to Center of Gravity	4'2"†	4'6½"	4'7"	4'5"	3'3"	3'10"

Note: Range exterior lengths include rear bumper † = Estimated at time of printing

All information contained in this brochure is believed to be accurate at the time of publication. However, during the model year, it may be necessary to make revisions and Coachmen reserves the right to make all such changes without notice, including changes in prices, colors, equipment

and specifications as well as the addition of new models and the discontinuance of models shown in this brochure. Therefore, please consult with your Coachmen dealer and confirm the existence of any materials, design or specifications that are material to your purchase decision.

## RANGER

### STANDARD FEATURES

#### INTERIOR AND DECOR

- ◆ Golden Cherry Cabinets
- ◆ Valances-Coach & Bedroom
- ◆ Drapes-Bedroom
- ◆ Mini Blinds-Coach & Kitchen
- ◆ Easy Care Linoleum
- ◆ Cabover Privacy Drape
- ◆ Pedestal Dinette Table
- ◆ 5' Foam Dinette Cushions
- ◆ Side Gaucho (115SL)
- ◆ LP Leak Detector
- ◆ Carbon Monoxide Detector
- ◆ Fire Extinguisher
- ◆ Smoke Detector

#### GALLEY

- ◆ Microwave Ready
- ◆ 3 Burner (High Output) Range Top
- ◆ Lighted, Power Range Hood
- ◆ Large, Flush Mount, Single Door Refrigerator
- ◆ Double Stainless Steel Sink

#### ELECTRICAL/HEATING/

#### AIR CONDITIONING

- ◆ 32 Amp. 110/12 Volt Power Center with Converter
- ◆ 30 Amp. Power Cord
- ◆ Battery Box
- ◆ Interior GFI Outlet
- ◆ Exterior GFI Receptacle
- ◆ 110-Volt Receptacles
- ◆ 12-Volt Lighting
- ◆ Porch Light
- ◆ Rear Back Up Lights
- ◆ Double 20 lb. LP Bottles
- ◆ 25,000 BTU E.I. Furnace
- ◆ Roof AC Ready

#### SLEEPING

- ◆ Queen Bed
- ◆ 4" Thick Cabover Mattress

#### BATH AND WATER SYSTEM

- ◆ Marine Toilet with Heated Holding Tank
- ◆ Enclosed Heated Fresh Water Tank
- ◆ Enclosed Heated Holding Tanks
- ◆ Molded Fiberglass Wet Bath (115RD)
- ◆ Dry Bath (115RB, 115L)
- ◆ Shower
- ◆ Power Bath Vent
- ◆ Monitor Panel
- ◆ 6 Gallon Fast Recovery Water Heater
- ◆ 12-Volt Demand Pump
- ◆ Lavatory
- ◆ Kitchen & Bath Faucet
- ◆ Medicine Cabinet
- ◆ Outside Shower
- ◆ Water Heater-by-Pass

#### EXTERIOR/CONSTRUCTION

- ◆ Heated Basement Floor
- ◆ Laminated Floor with Welded Steel Super Structure
- ◆ Laminated Sidewalls with Aluminum Framing
- ◆ Polar White, Smooth Fiberglass Sidewalls
- ◆ Rubber Roof
- ◆ Awning Rail
- ◆ Radius Safety Glass Jalousie Windows
- ◆ Slider Window to Cab
- ◆ Dead Bolt Lock on Door
- ◆ Skylight Roof Vent
- ◆ Super Exit Dome
- ◆ Copper LP Lines
- ◆ Bumper with Sewer Hose Storage
- ◆ Fold-Down Entry Step (Except on 115RB)
- ◆ Double Slide-out Step (115RB)
- ◆ Luggage Rack & Ladder
- ◆ Extended Cab
- ◆ Four Ball Screw Jacks

#### OPTIONAL FEATURES

- ◆ Copper Canyon Decor
- ◆ Silver Aspen Decor
- ◆ Blue Cascade Decor
- ◆ Sandstone Decor
- ◆ Twin Beds
- ◆ Side Swing Down Hide-A-Bed Cabinet

- ◆ Golden Cherry Hardwood Raised Panel Doors & Drawer Front
- ◆ Jack Knife Sofa (115SL)
- ◆ AM/FM Cassette with 2 Speakers
- ◆ Wire & 2 Speakers
- ◆ TV Antenna & Rotor Package
- ◆ TV Antenna Ready
- ◆ Flush Mount, Double Door Refrigerator
- ◆ 3 Burner (High Output) Range with Oven
- ◆ 6 Gallon E.I. Water Heater
- ◆ Tinted Radius Safety Glass
- ◆ Jalousie Windows
- ◆ 7,000 BTU Roof Air Conditioner
- ◆ Four Electric Ball Screw Jacks
- ◆ Generator Ready (Except 115RB)
- ◆ 2.8 LP Vapor Generator (Except 115RB)
- ◆ Electric Jack Ready
- ◆ CSA Upfit

- ◆ Exterior GFI Receptacle
- ◆ 110-Volt Receptacles
- ◆ 12-Volt Lighting
- ◆ Porch Light
- ◆ Rear Back-Up Lights
- ◆ Single 20 LB. LP Bottle
- ◆ 16,000 BTU E.I. Furnace
- ◆ Roof Air Conditioner Ready

#### BATH AND WATER SYSTEM

- ◆ Enclosed Heated Fresh Water Tank
- ◆ Bathroom with Shower Package (Includes: Shower, Marine Toilet with Tank, Lavatory, Power Bath Vent, Medicine Cabinet, Water Heater, 12-Volt Demand Pump, Kitchen and Bath Faucet)

#### EXTERIOR/CONSTRUCTION

- ◆ Seamless One-Piece Aluminum Roof
- ◆ Structurwood Floor
- ◆ Fiberglass Insulation
- ◆ Awning Rail
- ◆ Safety Glass Jalousie Windows
- ◆ Slider Window to Cab
- ◆ Dead Bolt Lock on Door
- ◆ Single Slide-Out Step (095SD)
- ◆ Copper LP Lines
- ◆ Three-Corner Tripod Jacks
- ◆ Luggage Rack and Ladder
- ◆ Skylight Roof Vent

#### OPTIONAL FEATURES

- ◆ Copper Canyon Decor
- ◆ Silver Aspen Decor
- ◆ Blue Cascade Decor
- ◆ Sandstone Decor
- ◆ Side Hide-A-Bed Cabinet
- ◆ AM/FM/Cassette Stereo w/2 Speakers
- ◆ Wire and Two Speakers
- ◆ TV Antenna and Rotor Package
- ◆ TV Antenna Ready Package
- ◆ 3-Burner (High Output) Range w/Oven
- ◆ 6-Gallon E.I. Water Heater
- ◆ 7,000 BTU Roof Air Conditioner
- ◆ Four Ball Screw Jacks
- ◆ CSA Upfit

## SPORT

### STANDARD FEATURES

#### INTERIOR AND DECOR

- ◆ Cabover Privacy Drape
- ◆ Easy Care Linoleum
- ◆ Mini Blinds - Kitchen
- ◆ Pedestal Dinette Table
- ◆ 5' Foam Dinette Cushions
- ◆ Fire Extinguisher
- ◆ Carbon Monoxide Detector
- ◆ LP Leak Detector
- ◆ Smoke Detector

#### GALLEY

- ◆ 3-Burner (High Output) Range Top
- ◆ Power Range Hood
- ◆ Large, Flush Mount, Single Door Refrigerator

#### SLEEPING

- ◆ Queen Bed in Cabover
- ◆ 4" Thick Cabover Mattress

#### ELECTRICAL/HEATING/LP

- ◆ 32-Amp. Power Center with Converter
- ◆ 30 Amp. Power Cord
- ◆ Interior GFI Outlet

# What You Can't See Usually Counts The Most.

Coachmen believes its owners are entitled to quality and sturdy construction even if it's hidden from view. Hidden quality does cost more, and the uneducated buyer may not always understand the difference. But, those differences can be critical to long-term satisfaction and future resale value.

"Hidden" quality features from Coachmen include:

### Structurwood® Floor

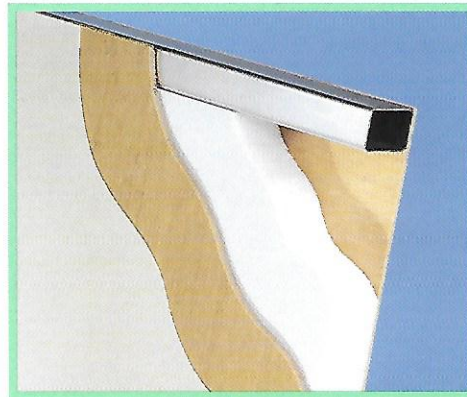
Consistent with residential construction, Coachmen uses Structurwood for its flooring, which is proven to be 10% stronger, and resists water absorption far better than plywood.

### Steel Floor System

Ranger truck campers are built on welded, tubular steel frames. Lauan is laminated above and below with a thick packing of polystyrene foam insulation sandwiched between. This system provides superior strength and durability.

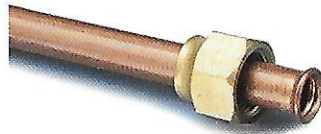
### Darco Liner

Underneath all Coachmen truck campers you will find a one-piece Darco Liner. This rugged fiber-laminated polypropylene material is highly resistant to punctures and solvents. Don't be fooled by less-expensive, look-alike materials used by other brands, which offer inferior protection.



### Laminated Construction

All Ranger truck campers feature fully laminated wall and roof construction. A strong welded, tubular aluminum frame is used, along with Lauan sheets and polystyrene foam insulation. Seamless smooth fiberglass is laminated to the outerwall while attractive decorator wall board is used on the interior. A seamless piece of rubber is used as the exterior surface covering the roof. This integrated system provides unmatched strength and long term performance.



### All Copper LP Lines

Coachmen uses only heavy-duty copper tubing for our LP gas lines. (Many brands use copper at the appliances and then switch to a much less expensive black steel pipe.) For a tight seal, the copper tubing has a double flare at each joint. Copper is much safer to use because it protects against corrosion and resulting leaks.

### Buyer's Checklist

To help you make an informed purchase decision you'll enjoy for many years to come, refer to this list of Coachmen features. Please compare us to the competition!

- ✓ Fully laminated, fully insulated aluminum-framed construction (Ranger)
- ✓ Seamless Fiberglass Exterior (Ranger)
- ✓ Seamless one-piece roof (rubber on Ranger, aluminum on Sport)
- ✓ Enclosed and heated fresh water tanks
- ✓ Copper L.P. lines; entire system
- ✓ Three-burner high output range top
- ✓ Thick and durable foam dinette cushions
- ✓ Queen bed in cabover
- ✓ L.P. leak detector
- ✓ Electrical wiring routed through studs and protective metal sleeves
- ✓ Carbon monoxide detector
- ✓ Cabover privacy drape
- ✓ Luggage rack and ladder
- ✓ Two-Year Structural Warranty

# A Warranty To Count On.

## Buckstopper Warranty

We work very hard to see that our products out-perform your expectations. But, should something go wrong with the workmanship or materials during the warranty period, we will fix it. As the saying goes, the buck stops here.

Your Owner's Registration Card and our famous Buckstopper Warranty are your passport to worry-free travel. Throughout the United States and Canada, our network of over 300 independent dealers stands ready to provide you with courteous, dependable service.



## Two-Year Structural Warranty

We are very confident about our products, for reasons explained in this brochure. Our owners share in our confidence, with Coachmen's exclusive TWO-YEAR LIMITED STRUCTURAL WARRANTY. Only with Coachmen do you receive extended peace of mind and warranty coverage for your floor, ceiling assembly and any laminated structural components.

## Transferable Warranty

Your Buckstopper Warranty may be transferred to a subsequent owner for a small registration fee, if you sell your coach during the term of your one-year Buckstopper Warranty. This feature greatly enhances the resale value of your Coachmen product. (Sorry, the Extended Limited Structural Warranty may not be transferred.)

When making your purchase decision, you should select a company you can count on, with a warranty you can depend on. ***Nobody protects you better than Coachmen...for the long haul!***

See your Coachmen dealer for complete details on our generous warranty program.

# Friends & Fun For Life.

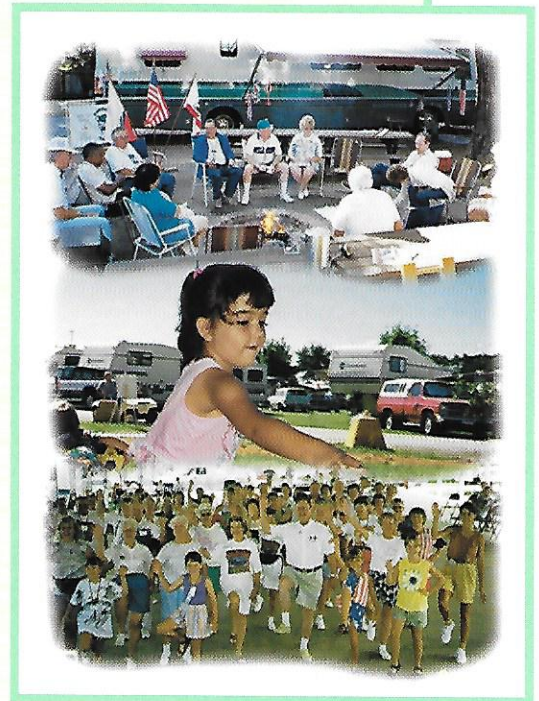
Your purchase of a Coachmen recreational vehicle qualifies you for a **free, one-year membership** in the International Coachmen Caravan, the nation's largest manufacturer sponsored RV club. Consisting of over 20,000 member families, the Coachmen Caravan was formed in 1966 to help our owners enjoy RV ownership to the fullest.

With Coachmen, unlimited opportunities exist for you and your family to form lifelong friendships; improve and share your unique talents, skills and crafts; be active in running your club; and exchange ideas, information and helpful hints—all these, plus the many benefits outlined below, are uniquely yours through the International Coachmen Caravan.

## Incredible Membership Benefits

In addition to automatically expanding your circle of friends, your Caravan membership brings you a multitude of benefits:

- Free \$5,000 Accidental Death and Dismemberment Insurance policy, with additional policies available for \$5 a year.
- Emergency road service and RV insurance at low rates.
- Free trip-planning service.
- 10% Discounts at over 3,500 campgrounds in the U.S. and Canada.
- Free annual Campground Directory.
- Hassle-free group travel to popular destinations.
- Free lost-key return service.
- Organized campouts, meetings and parties.
- Free subscription to COACHMEN CAPERS, the club's quarterly magazine.
- Annual International Rally Week.
- A Coachmen Caravan MasterCard with no annual fee and low interest.
- Free I.D. card, Caravan key ring, vehicle decals and I.D. numbers.
- Discounts on club clothing, accessories, film developing and selected RV publications.



## The Company

# Coachmen: Leader To The Great Outdoors.

Coachmen Recreational Vehicle Company has manufacturing facilities in Middlebury, Indiana, Fitzgerald, Georgia, and Grants Pass, Oregon, and occupies over 600,000 square feet on nearly 120 acres. The Coachmen name is one of the most recognized names in our industry, and our products provide recreational enjoyment throughout North America and Europe.

From our beginning in 1964, we have been, "Dedicated to the Enrichment of Your Life." You will find proof of this dedication in our innovative and user-friendly products and our smorgasbord of customer benefits and services.

We are driven by a deep concern for your safety, comfort, pride of ownership and pleasure—in short, **your satisfaction.**

Coachmen knows what it takes to make an RV great. Join us! We'll lead the way to the great outdoors.



*Come visit us at our Oregon facility (above left), our Georgia facility (above right), or our Complex in Indiana (top) where you can relax at our Visitor's Center (above center) and enjoy guided tours of the assembly plants.*

### Meet Pete The Coachmen Dalmatian.

Pete, the Dalmatian, has been a vital part of Coachmen since 1964, when he joined our newly formed company as watchdog, playmate and friend. Pete became our official mascot when we learned that, coincidentally, the Dalmatian is the official "coach dog." Since then, Pete has guided Coachmen and America to the best in products, quality and customer satisfaction. Follow Pete to the Great Outdoors.



Visit Our Website At: [www.coachmenrv.com](http://www.coachmenrv.com)

P.O. Box 30, Middlebury, IN 46540 • P.O. Box 948, Fitzgerald, GA 31750

