



*Damon*

# CHALLENGER FIFTH WHEELS

Awnings are standard on every Challenger Fifth Wheel adding up to 160 square feet of outdoor living space.



## WIDE OPEN SPACES

If you're a traveler who likes wide open spaces, you'll love the wide open spaces inside the Challenger Fifth Wheel by Damon. From stem to stern, our Challenger's interior offers a vast expanse of quality, stylishness and common-sense design.

And there's more. Some Challenger floor plans offer not one, not two, but three EasyGlider™ slide-out rooms that can increase your interior space up to 77 square feet.

Challenger. It's got all the space and comfort you've come to expect from Damon — and then some.

Model 38TSB • Creme DeCocoa decor

---

Our EasyGlider slide-out system also increases the space in your dining area, plus it ensures a smooth, level floor throughout by eliminating a step up. The large, beautiful sofa conveniently converts to a cozy bed and it's carefully coordinated with the recliner chairs to enhance the Challenger's overall appeal. Plus, the sofa is movable, as is the free-standing dinette, so you can re-arrange furniture to accommodate a good game of cards or friendly conversation.

---

---

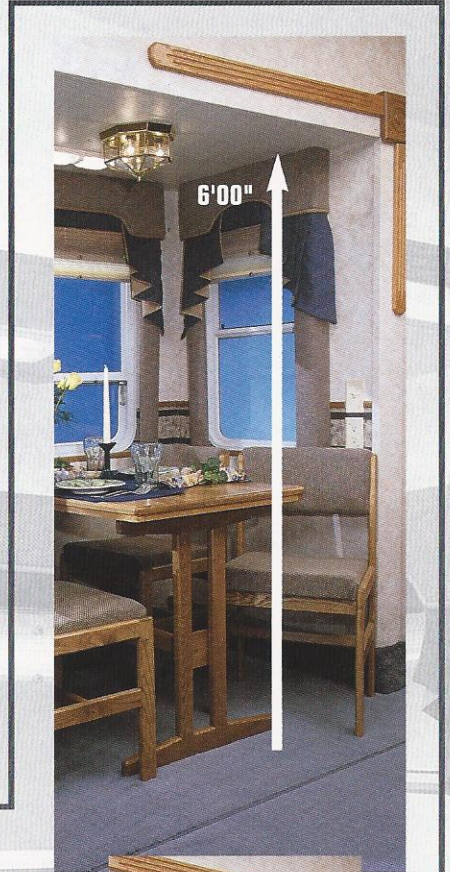
Our exclusive EasyGlider™ slide-out expands your already spacious living area. Restful wall-hugger recliner chairs can be re-arranged into a cozy conversation corner. And, when lowered, contemporary day/night window shades provide extra privacy.

---





Model 58TSB • Creme DeCocoa decor



## EXPAND ON DEMAND

It's so easy to expand a Challenger using our EasyGlider system — all it takes is a simple push of a button. And EasyGlider automatically levels your floor, smooths it and eliminates an extra step that may trip you up. Plus the extra height affords you a full six feet of standing room to accommodate tall friends and family members. (Some Challenger floor plans have three EasyGlider slide-outs for up to 77 sq. ft. of expanded living area; all others have at least one.)

Notice, too, that the slide-out windows are larger than ever. Why? For an even wider, more beautiful view. Solid oak fascia trim on the slide-out is just another example of Damon's attention to detail and the overall elegance of the Challenger.



SPACIOUS BY DESIGN

# CHALLENGER FIFTH WHEELS



## SLIP INTO SOMETHING COMFORTABLE

Slip into a Challenger fifth wheel and enjoy overall comfort like you've never experienced before. We call it "Comfort By Design." It begins with quality construction and is enhanced by our elegant furniture and impressive list of standard features. Features that other manufacturers either offer as options or don't offer at all. "Comfort By Design" — it's what you see, what you feel, and what you experience inside every Challenger Fifth Wheel by Damon.

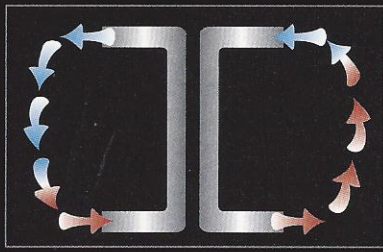
Model 38TSB • Creme DeCocoa decor

---

**The functional entertainment center features a small desk for writing letters, paying bills or cruising the internet on your laptop computer. Also available are a TV, VCR and stereo to help you enjoy spare-time pleasures. Leaded-glass cabinets add beauty and charm, and the attractive solid oak cabinets store a myriad of personal items.**

---





Summer / Winter

Our exclusive Comfort Control Center™ improves on most roof-mounted RV units, even some home heating and cooling systems. Combined with well-insulated walls and ceiling, this 13,500 BTU central air conditioning system circulates air and regulates temperatures inside your Challenger. In winter, heated air is circulated up to keep you toasty warm; in summer, cold air is circulated down so you're always cool and comfortable.



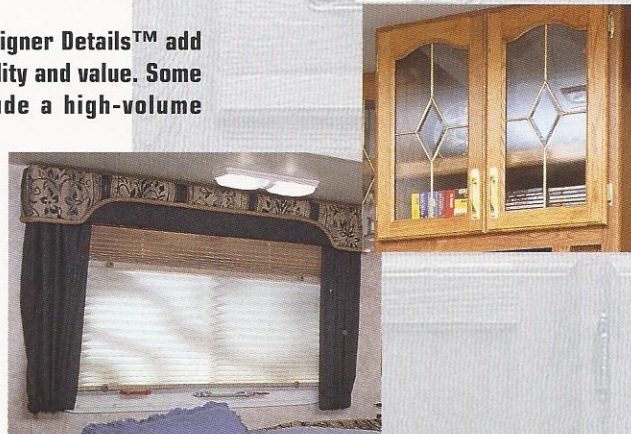
Model 34TSB • Creme DeCocoa decor



The Challenger StepSaver™ kitchen is practical and efficient since everything is cleverly positioned right at hand to make meal preparation easy. The kitchen features an extra large double-bowl porcelain sink, optional radius-edge solid-surface counter tops, flush-mounted two-door refrigerator, four-burner range with oven, plus an optional high-capacity convection microwave. Rich, solid oak cabinets provide extra storage, including overhead cabinets which feature elegant cathedral-cut, raised panel doors.

## Damon Designer Details

All of our exclusive Damon Designer Details™ add up to one big difference in quality and value. Some of our special accents include a high-volume paddle fan; matching designer fabrics on dinette chairs and recliners, classic leaded-glass storage cabinets, designer wallpaper border in kitchen and slide-outs and premium pleated day/night window shades for extra privacy.



COMFORT BY DESIGN

# CHALLENGER FIFTH WHEELS



## SENSATIONAL, YET SO SENSIBLE

Beautiful looks and decorator fabrics are obviously important in all Challenger models. But it's down-to-earth, practical things like extra storage space, the liveability and flow of floor plans and added headroom that really make a big difference to our customers.

The master bedroom is a delightful haven with its designer bedspread and matching window treatments, day/night shades and large storage closet. Our exclusive slide-out room increases the master bedroom by approximately 20 percent. Additional features include a cable-ready TV shelf and a convenient vanity table for applying makeup.

Model 38TSB • Creme DeCocoa decor

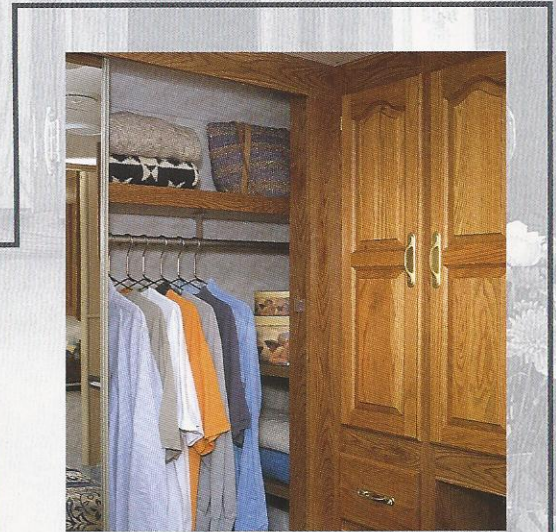
Open the stylish sleeper sofa in the living room and create an additional bed for family or friends.





This model's spacious walk-through bathroom (over 52 sq. ft.) accommodates a shower with skylight (not shown), solid oak storage cabinets and linen closet, mirrored medicine cabinets and large sink with decorator-style optional solid-surface counter tops.

Model 38TSB • Creme DeCocoa decor



## STORAGE DESIGNED WITH YOUR NEEDS IN MIND.

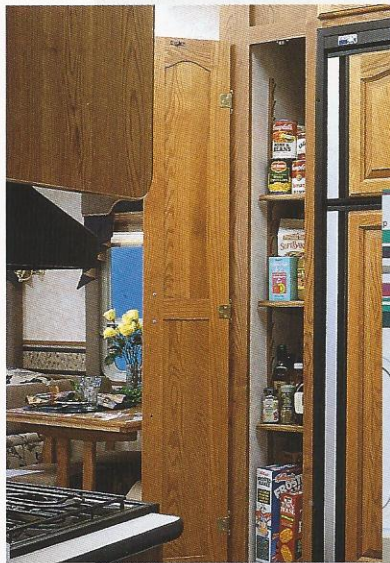
**Storage is everything when traveling, so we do everything we can to maximize it whenever possible. For instance:**

**We provide convenient kitchen pantry storage right next to the flush-mounted refrigerator.**

**Large bedroom closets with fashionable mirrored doors store all of your clothing. The beautiful solid oak cupboard and additional drawers store sweaters and other personal items.**

**Our tri-level floor plans give you additional useable floor space inside, plus pass-through storage outside for large items like ice coolers, fishing tackle and life preservers.**

**There's always extra storage in the drawers, cupboards and shelves throughout our spacious Challenger Fifth Wheel.**



PRACTICAL BY DESIGN

# CHALLENGER FIFTH WHEELS



2" x 4" bow truss rafters 16" on center secure the roof foundation and facilitate efficient water runoff.

Each Challenger uses only Fantastic® roof vents which are thermostatically controlled with two speeds for super ventilation.

New, thicker 7/16" roof decking provides superior durability, strength and support for roof cargo.

The 13,500 BTU central air conditioning is thermostatically controlled for superior distribution of cool air.

Natural lighting abounds in every Challenger bathroom provided by the standard skylight.

Aluminum roof rack and ladder for convenient access to roof storage (optional).

Foam-insulated central air ducting, an enhancement to DAMON's Comfort Control Center™, offers efficient distribution of the cool air.

Fully integrated front and rear fiberglass caps display luxury and enhance your Challenger's exterior.

The welded aluminum framing is strong, yet lightweight, to provide safety and structural integrity.

All door and window openings are completely framed for extra strength and durability.

Full 1-1/2" expanded polystyrene block foam insulation in your Challenger sidewalls and floor increases energy efficiency and helps to provide an excellent acoustical barrier.

The new easy-to-operate, skid-resistant triple-entrance step offers excellent traction and easy access into your Challenger Fifth Wheel.

High-quality residential carpet and padding provides comfort and insulation on top of your 5/8" tongue and groove floor decking.

Your Challenger Fifth Wheel aluminum walls are securely floor-mounted to provide super structural integrity.

Electric front jacks provide safe, level camping at the push of a button.

The fully enclosed underbelly provides worry free, extended seasonal use. It protects holding tanks and reduces wind resistance when traveling.

Welded 10" cambered steel I-beam frame provides rugged strength and incredible safety.

Each Challenger Fifth Wheel is constructed with heavy-duty steel outriggers to provide additional wall support for added strength and stability.

COS  
ALL-I  
CRUI  
AIR 8  
AIR 8  
TRAIN  
CAR  
MOTO  
TRAV



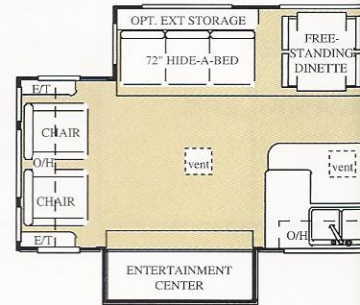
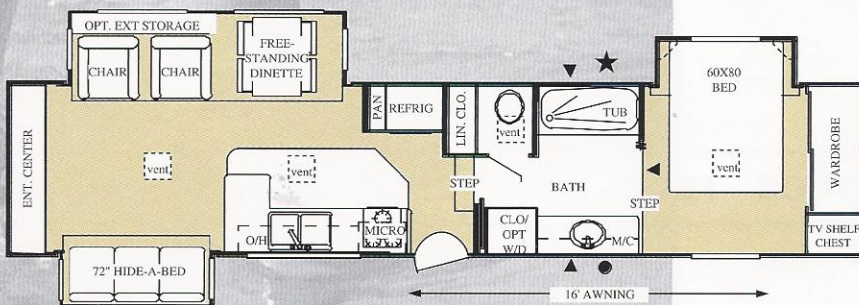
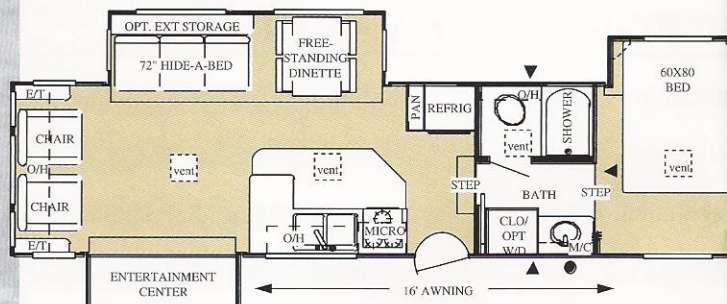
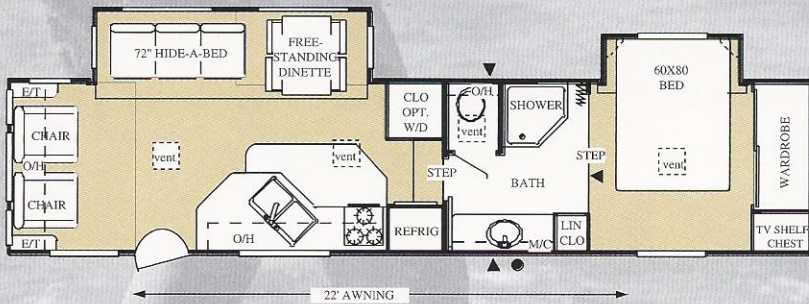
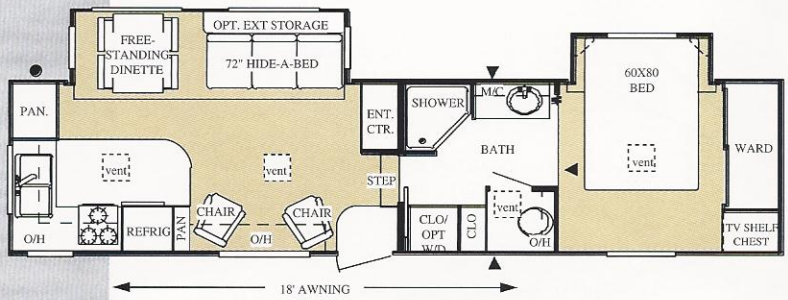
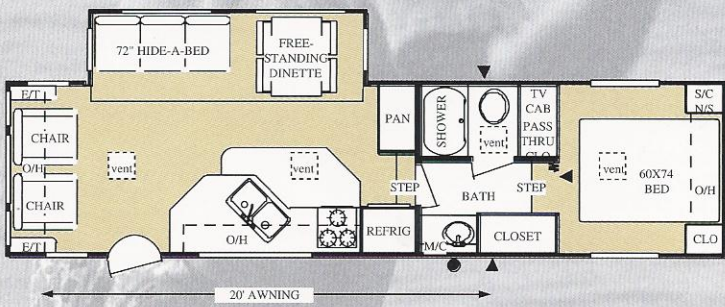
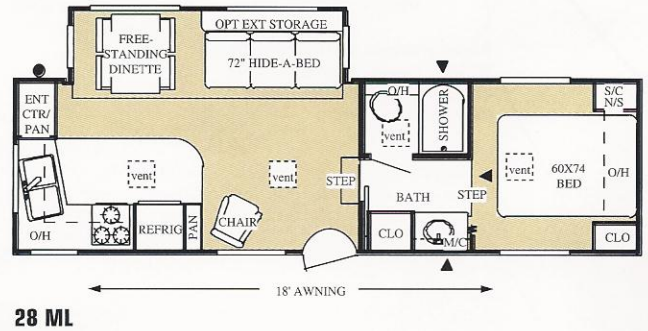
# CHALLENGER FIFTH WHEELS



DESIGNED FOR  
YOU. BY YOU.

With our many design options and incredible variety of floor plans, you can build the Challenger that's perfectly suited to your needs — your own unique home on wheels for your own special brand of fun. In fact, the only limit is your own imagination.

## 1998 FLOOR PLANS / FIFTH WHEELS



★ These floor plans feature a 54" x 28" tub, the largest tub in the Damon line and one of the largest available.

Attractive contoured fiberglass front and rear caps are standard on every Challenger Fifth Wheel.

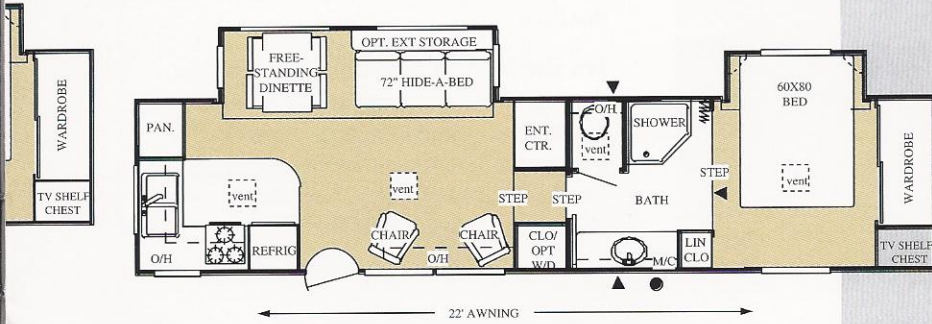
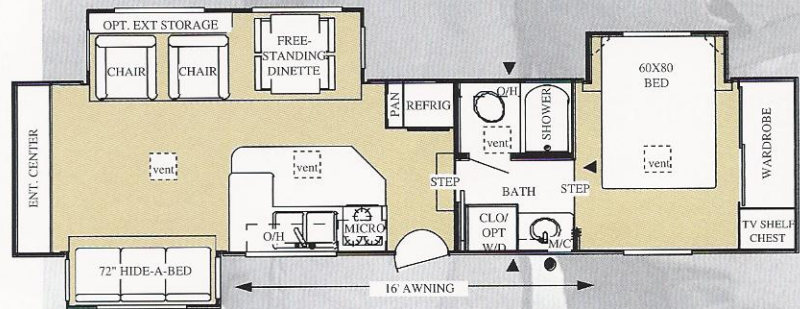
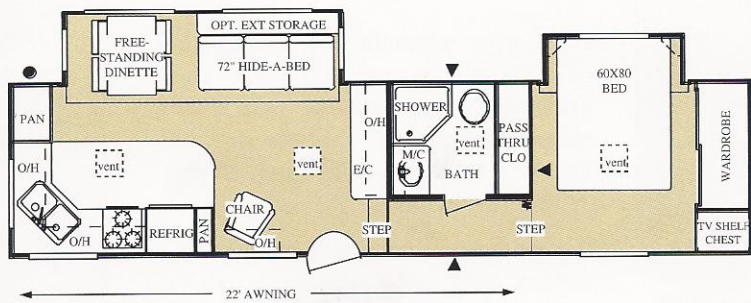
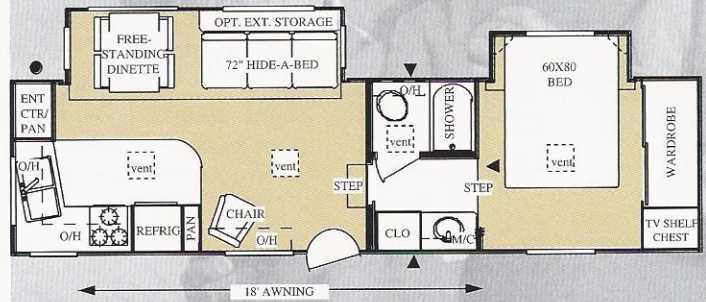
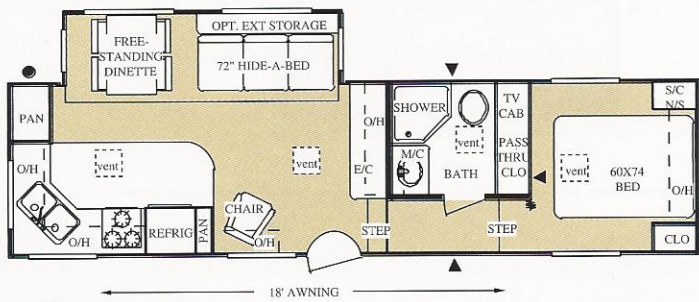
Depending on your choice of floor plans, Challenger comes standard with a solid rear cap or our new bay window rear cap for a big, beautiful view.



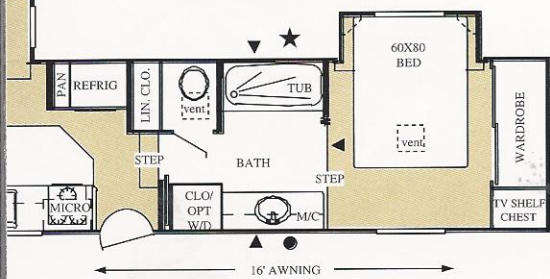
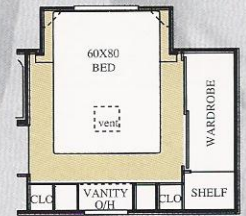
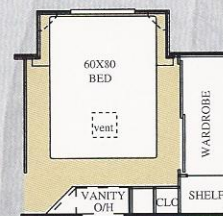
## CHALLENGER VIDEO OFFER

See a Challenger up close and personal, both inside and out, with Damon Corporation's special video tour - just \$10.00 by mail. Send your check, name and address to:

Damon Corporation - Challenger Fifth Wheel Video  
 P.O. Box 1107  
 Elkhart, IN 46515



## 1998 FLOOR PLAN OPTIONS



★ These floor plans feature a 54" x 28" tub, the largest tub in the Damon line and one of the largest available

YOURS BY DESIGN

# CHALLENGER FIFTH WHEELS



MEDIUM  
OAK



LIGHT  
OAK

Damon uses more aluminum to build Challenger Fifth Wheel exterior sidewall frames than many competitors do. After insulation is added behind the aluminum, the entire structure is vacuum-bonded to fiberglass to create a one-piece, laminated wall that's corrosion-resistant and tough as nails. The optional gel-coat finish gives the entire exterior a durable high-gloss finish.



**Aluminum  
SIDEWALL  
Frame**



MINT JULIP



GALLIANO



CREME DECOCOA



## SURE SIGNS OF SOLID CONSTRUCTION.

For greater strength and stability, our cabinets are screwed together when assembled, not stapled like some competitive models. Cabinets are also screwed into the walls, not stapled, adding more stability.

Our full-height outrigger is braced to the welded steel frame. This gives exterior walls better structural integrity and strength, plus provides better support to the floor.

The aluminum frame walls are screwed to the top of the floor, not to the sides like some other models. The floor supports the entire wall, not just the screws, and provides enhanced structural reinforcement, stability and strength.



Go RVing.

Your nearest dealer:

**JERRY'S TRAILERS & CAMPERS**  
2601 S. 13th St.  
Norfolk, NE 68701

P.O. Box 1107  
Elkhart, IN 46515  
1-800-860-5655



Due to constant product improvements, the equipment, specifications, component parts and standard/optional equipment are subject to change without notice or obligation. Product photography or diagrams may show equipment that is optional. Damon Corporation reserves the right to make changes in prices and models, and to discontinue models without notice or obligation. Components, parts, or chassis may have been manufactured at times other than the model year indicated. All capacities are approximate and dimensions are nominal. See your Damon dealer for full details. DC 5/97. © Damon Corporation - 1997 Printed in the USA.