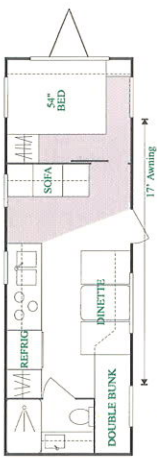




MOVING
the
*Comforts
of Home*
to the
OUTDOORS

Sportsmen

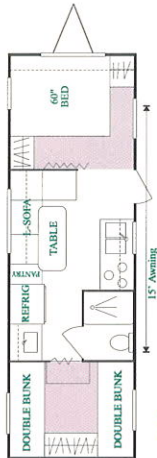
TRAVEL TRAILERS



2701

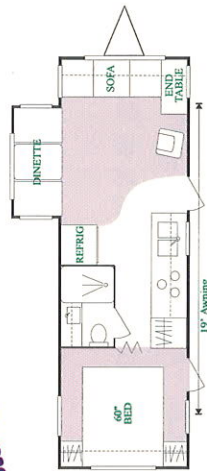


2701P (Opt. 4)



2704 SS

NEW!
super
Storage



2801P (Opt. 1, 4)

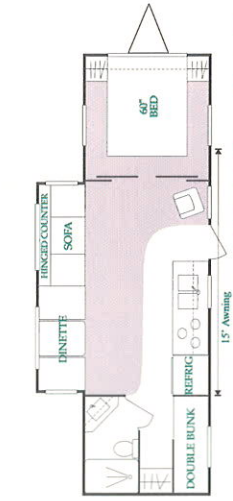


2803 (Opt. 1)

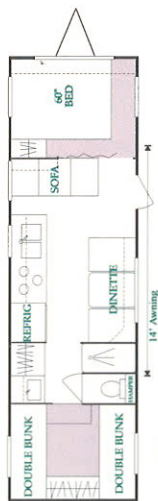
NEW!



3006 (Opt. 7)



3003 P (Opt. 2, 4, 5)

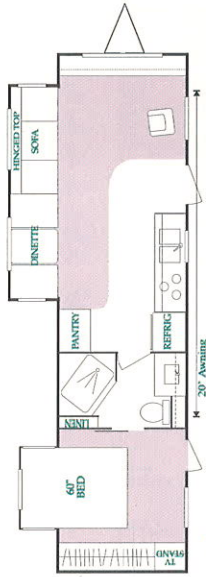


3004 SS

NEW!
Super
Storage



3507P (Opt. 1, 4, 5)



3510Px2 (Opt. 1, 4, 5, 7)

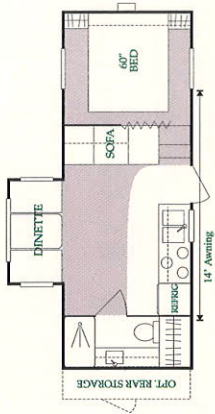
2604P

NEW!

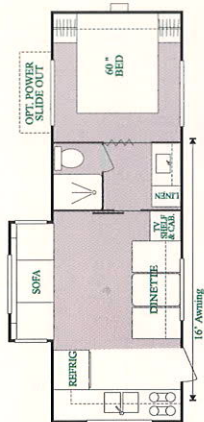


Whether taking a weekend outing or touring cross-country, Sportsmen has the unit you need for a relaxing get-away.

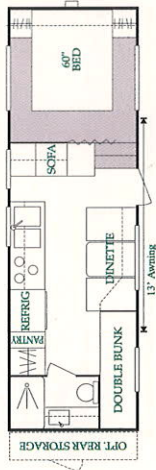
F I T H W H E E L S



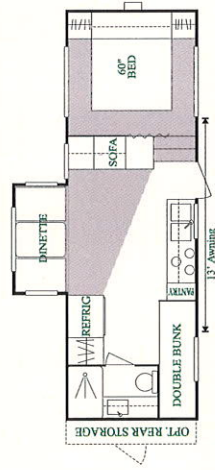
2251P (Opt. 4, RS) LP



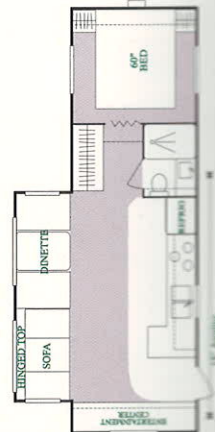
2552P (Opt. 3, 5, 6) SU / MP



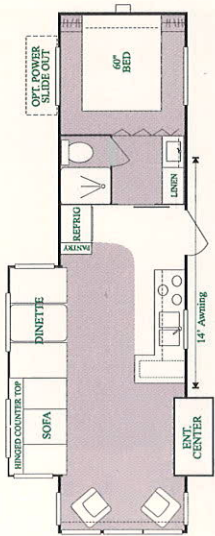
2554 (Opt. RS) LP



2554P (Opt. 4, RS) LP

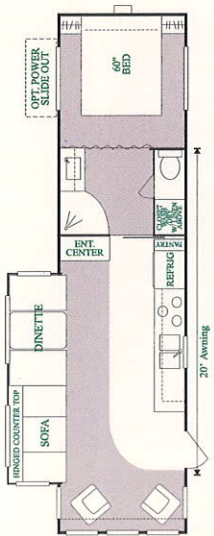


2656P (Opt. 3, 4, 5) MP



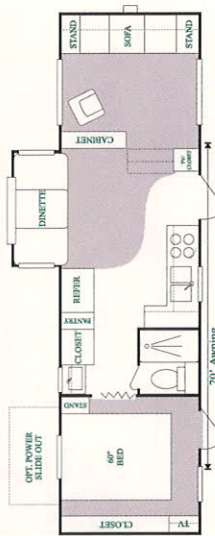
3252Px2 (Opt. 3, 4, 5, 6) SU

NEW!

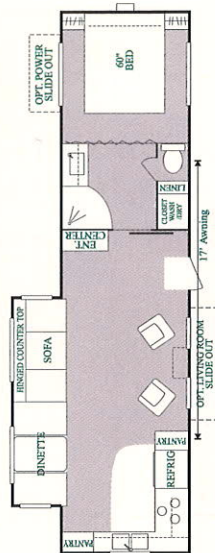


3253P (Opt. 3, 4, 5, 6) SU

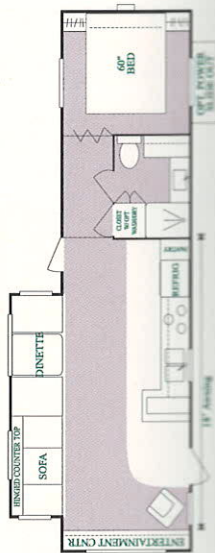
NEW!



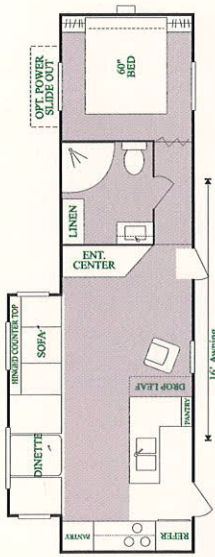
3257P (Opt. 1, 4, 7) SU



3351P (Opt. 3, 4, 5, 6) SU

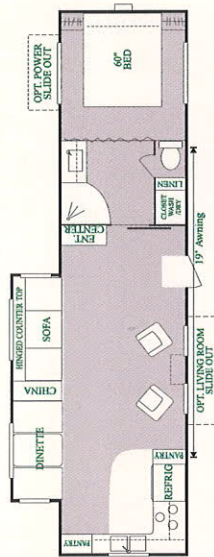


3353P (Opt. 3, 4, 5, 6) SU

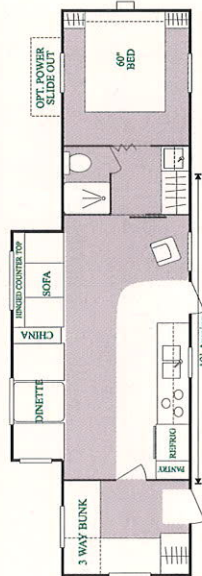


3357P (Opt. 3, 4, 5, 6) SU

NEW!



3554P (Opt. 3, 4, 5, 6, 8) SU

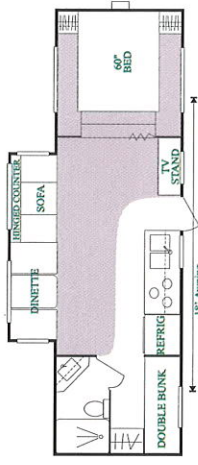


3756Pz2 (Opt. 3, 4, 5, 6) SU

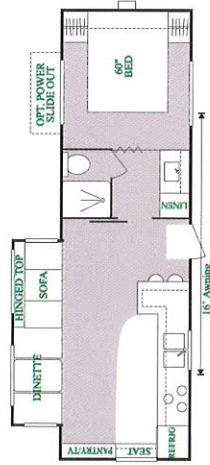
FIFTH WHEELS



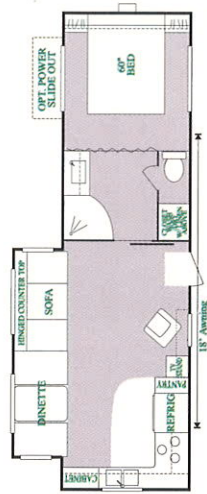
2851P (Opt. 3, 4, 5, 6) SU / MP



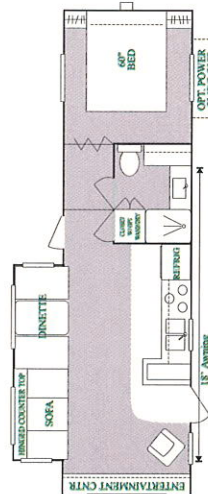
2854P (Opt. 3, 4, 5) MP



2855P (Opt. 3, 4, 5, 6) SU / MP



3051P (Opt. 3, 4, 5, 6) SU

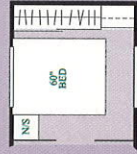


3053P (Opt. 3, 4, 5, 6) SU

F E A T U R E D O P T I O N S

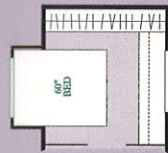
Customize your new Travel Trailer or Fifth Wheel by selecting from among these options. Floor plans indicate which options are available on each unit. Ask your dealer for details.

OPTIONAL BEDROOM

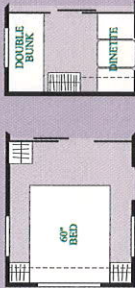


OPTION 6

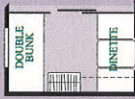
BEDROOM SLIDE OUT



OPTIONAL REAR BEDROOMS

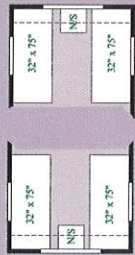


OPTION 7

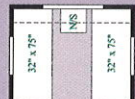


OPTION 8

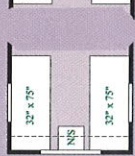
OPTIONAL TWIN BEDS



OPTION 1



OPTION 2



OPTION 3



OPTION 4



OPTION 5

OPTIONS IN POWER SLIDE OUTS

OPTION 3

OPTION 2

OPTION 1

Note: Not all options are available on each unit. See available option list beside each model floorplan number.

K-Z Inc reserves the right to cancel or alter available options. Features available on early 1998 models may vary.

3252Px2

Whether taking a weekend outing or touring cross-country, Sportsmen has the unit you need for a relaxing get-away.



Travel Trailer & Fifth Wheel Standard Features

- Radius Compression Windows
- Solid Oak Drawer Fronts
- Cabinet Doors: Solid Oak, Mortise & Tendon Jointed Frames
- Radial Tires
- Cable Hook Up
- 1 Sink Cover
- One Piece Rubber Roof*
- One Piece Aluminum Roof
- Regular 60" Mattress**
- Regular 54" Mattress**
- Regular 48" Mattress**
- Gas Props**
- Oven - W/ Black Porcelain Front (Large 22") with 3 Burner High Output Range & Piezo Ignitor
- Large Stainless Steel Sink**
- Deluxe Fabrics
- Steel Framed Sofas
- Storage Doors on end of Dinette Bases**
- Chair (where indicated on floor plan)
- Water Heater By-Pass Kit
- Single Piece Tub Wall Surround
- Chair Rail (living room & bedroom)
- Power Range Hood w/ Light
- Pull Shade Package (all windows)
- Stereo
- TV Antenna w/ Booster & 2 Jacks**
- One Double Step at Main Entrance on all Fifth Wheels** and Travel Trailers (24' & larger)**
- One Triple Step at Main Entrance on all Power Slide Outs**
- 6 Gallon DSI Water Heater
- 30# LP Bottles (2400 Series and larger Travel Trailers and all Fifth Wheels)
- Light Switch at Entrance Door
- Light Switch for Bathroom
- Tub Faucet on all Floor Plans
- Double Door Refrigerator (2400 Series & larger Travel Trailers and all Fifth Wheels)
- 13,500 BTU Air Conditioner
- Ducted Air (2600 Series & larger Travel Trailers and 2550 Series & larger Fifth Wheels
- Awning (Recommended Size)
- Microwave
- Monitor Panel
- Gas Bottle Cover (on Travel Trailers)

* Standard on all Power Slide Out Models ** Where applicable and codes allow.
 Note: Some Standard Features may be cancelled or altered at dealer's request. Features available on early 1998 models may vary.

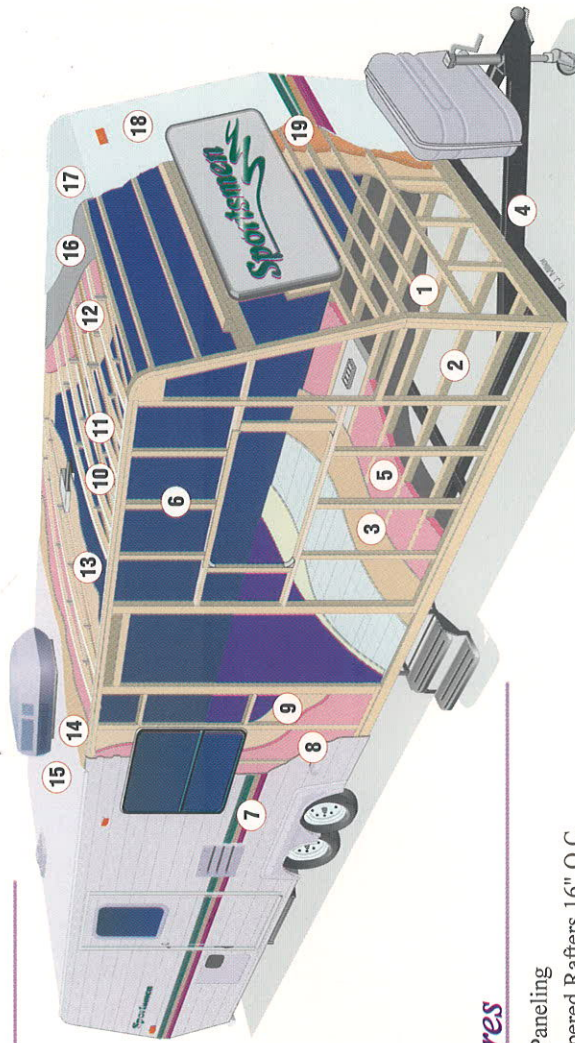
Optional Equipment

- Gas/Electric DSI 6 Gal. Water Heater
- Exterior Shower
- Stabilizer Jacks
- Water Filter
- Stove Cover
- Mini Blinds
- Spare Tire Kit
- Deluxe Package I or II
- Limited Edition Model (Fiberglass Exterior w/ End Caps)
- CD Player (available on most models)

(Available on Travel Trailers & Fifth Wheels)

Picture These Standard Construction Features

1. Puncture, tear & weather resistant underbelly
2. 2x3 Floor Joist 16" O.C.
3. 5/8" Tong & Groove Plywood
4. Heavy Gauge Box Tubular Steel Frame
5. Fiberglass Insulation R7 (Floor)
6. 2x2 Studs 16" O.C.
7. .024 MESA Metal
8. Fiberglass Insulation R7 (Sidewalls)
9. LUAN Paneling
10. 2x3 Tapered Rafters 16" O.C. (20'-25' TT & 20'-22' FW)
11. 5" Truss Rafters 16" O.C. (26'-40' TT & 25'-35' FW)
12. Fiberglass Insulation R7 (Roof)
13. LUAN Ceiling Board
14. 7/16" Deck Board*



15. Single Piece Rubber Roof*
16. Thermo-Ply Board
17. Single Piece Aluminum Roof
18. Optional Smooth Fiberglass (Limited Edition Models)
19. 1/4" Luan Backer (Limited Edition Models)

* Standard on all Sportsmen Power Slide Out Models

COLOR & WARRANTY

Sportsmen Limited Edition
Travel Trailer and Fifth Wheel



Whether you prefer spacious atmosphere of cozy camping, you will discover in our Sportsmen floor plans a Travel Trailer or Fifth Wheel created with your comfort and tastes in mind.



Mon Tone

3252Px2 Limited Edition



Blue Topaz

For over 26 years we've been earning our reputation as an outstanding Recreational Vehicle Manufacturer – largely through our commitment to quality and our attention to meeting unique needs of customers like you.

Limited Vehicle Warranty

K-Z Inc. warrants that it will repair or replace any part of your Travel Trailer, Fifth Wheel or Camper found to be defective in materials or workmanship within 12 months from date of original purchase. Components such as tires, plumbing and electrical fixtures, refrigerator, range, etc. are subject to separate warranties issued by other manufacturers. Ask your dealer for complete details.

Limited Two-Year Structural Warranty

The limited two-year structural guarantee warrants a guarantee against all defects in materials or faulty workmanship for the steel frame and wood structure for 24 months from date of original purchase. Guarantee applies to original owner only and is available upon request for inspection.

NOTE: Check with your dealer for 2-Year warranty availability on select components.



