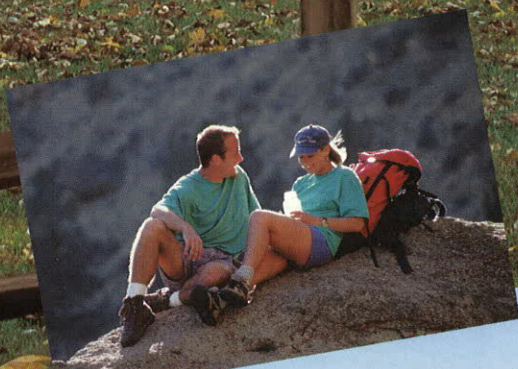


1997

Magnum

Magnum Travel Trailers & Fifth Wheels • By Damon Corporation



Magnum: A powerful combination of quality construction, outstanding features and affordable pricing.

Your satisfaction begins with Damon's StartRight Quality Assurance™ program.

How to stay cool in summer and warm in winter ... with Damon's innovative Comfort Control Center™.

Magnum Travel Trailers & Fifth Wheels

Value second to none.

Since its founding, Damon has pursued its mission of delivering recreational vehicles which represent "value by design." With the all-new Magnum line of travel trailers and fifth wheels, Damon has taken the value by design concept to a whole new level.

The best of two worlds.

Most travel trailers and fifth wheels in this price range are constructed with hung walls on wood frames. Magnum towables, however, feature one-piece bonded fiberglass sidewalls on super-sturdy wood frames for greatly improved durability and structural integrity. Combined with the seamless rubber roof, your Magnum will keep you safe, sound and dry year after year, mile after mile. And our R-7 insulation and Comfort Control Center™ will keep you cool in summer and cozy warm when the weather turns cold.



Damon Designer Details™ do make a difference!

Cooking is never a chore in our StepSaver™ kitchen, featuring a three-burner, high-output range with oven, large, double-door refrigerator, and super-sized, double-bowl porcelain sink with cover. The cabinetry is native American wood and features exceptional quality, strength and beauty. Other standard features include a lighted power range hood and microwave oven.



In the bedroom, the queen-size bed is dressed in bedspread and shams to match the drapes and valances. All in high-quality designer fabrics. And throughout the interior you'll find the bonuses we call Damon Designer Details™. Thoughtful details like an extra-large storage drawer under the sink. Coordinated trim in wood and glass. Decorative pin-up lights. No detail is overlooked in your Magnum.

Every Magnum passes our inspection before it passes yours.

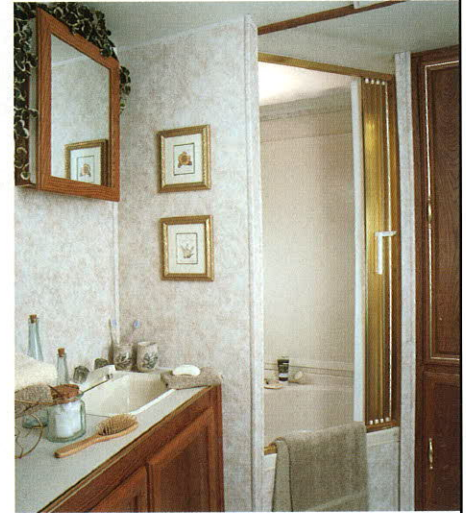
Damon's own StartRight Quality Assurance™ program is our promise to our customers that your Magnum is in top-notch condition. Unlike many other manufacturers, Damon conducts a rigorous 80-point inspection test on every model before it ever goes to the dealer. This procedure helps ensure that every system in your RV is up to par for your enjoyment and satisfaction — and ours.



Damon Corporation has built a superior reputation on the quality, dependability and absolute value of every RV we manufacture. So if you're looking for dependability, comfort and affordability in a travel trailer or fifth wheel, visit your nearest Damon dealer and check out the all-new Magnum today. For quality at an affordable price, Magnum truly is the best of both worlds. And you'll always be at home in your Magnum.



DAMON: Magnum Travel Trailers & Fifth Wheels



(Far left) (Model 35R) Damon's thoughtful StepSaver™ kitchen puts everything you need to prepare and serve meals within quick and easy access, including the double-bowl porcelain sink, three-burner range, large microwave oven and double-door refrigerator. (Left) (Model 35R) The extra features of the Magnum are reflected in the stylish master bedroom with mirrored wardrobe and coordinated bedding and accessories in Earth decor package. (Above) (Model 35R) Slide-out room on selected floorplans makes an ideal living area. Shown is Earth decor package which carefully coordinates the upholstery, valances, drapes and other amenities. (Above right) (Model 35R) Convenience and charm highlight the Magnum bathroom featured with optional folding shower door. (Right) (Model 35R) Optional entertainment center includes built-in TV, VCR and speakers which provide a cozy sitting area in your Magnum.



DAMON: Magnum Travel Trailers & Fifth Wheels

One-piece E.P.D.M. seamless rubber roof offers a full 12-year warranty and is specifically formulated for exposure to the sun and natural elements. Offers acoustical and thermal insulation as well.

2" x 4" tapered roof rafters 16" on center secure the roof foundation and facilitate efficient water run-off.

Designer interior ceiling panels are easy to clean.

Ducted 13.5 BTU central air conditioning circulates cool air throughout the coach. (Part of Magnum's Comfort Control Center™.)

Magnum's travel awning protects your front window from road debris and provides shade while camping.

Magnum's Ice White™ exterior is constructed of durable, easy-to-maintain laminated, smooth fiberglass sidewalls.

5/8" plywood floor is tongue-and-groove fitted, providing a strong, durable floor foundation.

Rugged vinyl underbelly provides a barrier from moisture and road debris.

Aluminum in-floor heat duct, part of Damon's exclusive Comfort Control Center™, provides efficient distribution of heat and leaves plenty of room for additional storage.

Rugged, welded tubular steel frame for superior strength and durability is painted to help prevent rust and corrosion.

Full 1-1/2" expanded polystyrene block foam insulation is cut, stuffed and glued into every cavity in the walls providing excellent insulation value.

Sewage hose storage bumper conveniently located for your use.

Walls securely anchored on TOP of floors, not simply screwed to the sides. Roof and sidewalls rest on top of floor ... ensuring the structural integrity of your Magnum.

Non-corrosive galvanized wheel wells help protect the under-carriage of your Magnum from moisture and road debris.

Radial tires with sport wheels for a smooth, safe ride. (Note the Ice White™ wheels.)

Designer linoleum is rugged and durable, yet attractive and easy to maintain.

Double-entry step offers excellent traction and easy access. (Triple-entry step standard on all slide-out units.)

100% continuous filament nylon carpet with Scotch Guard topical treatment and padding for extended use and wear.

Heavy-duty, full-length outriggers add structural support to the roof and sidewall assemblies.



Earth



Wind



Fire



Ice



Your nearest dealer:

JERRY'S TRAILERS & CAMPER'S
2601 S. 13th St.
Norfolk, NE 68701

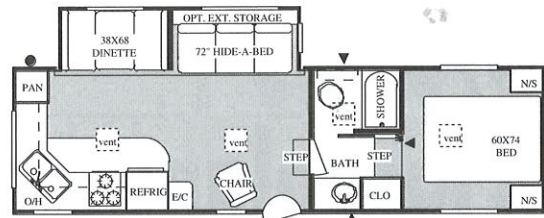
P.O. Box 1107
Elkhart, IN 46515
1-800-860-5655



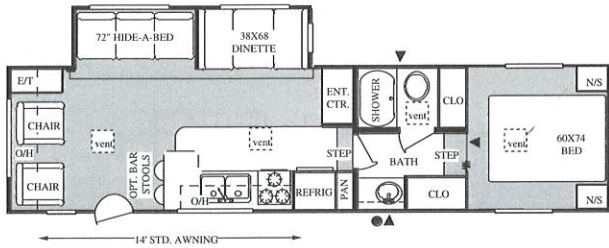
Go RVing™

Due to constant product improvements, the equipment, specifications, component parts and standard/optional equipment are subject to change without notice or obligation. Product photography or diagrams may show equipment that is optional. Damon Corporation reserves the right to make changes in prices and models, and to discontinue models without notice or obligation. Components, parts, or chassis may have been manufactured at times other than the model year indicated. All capacities are approximate and dimensions are nominal. See your Damon dealer for full details. DC 1/97. © Damon Corporation - 1997. Printed in the USA.

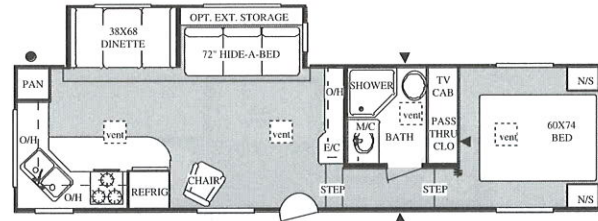
1997 Floor plans



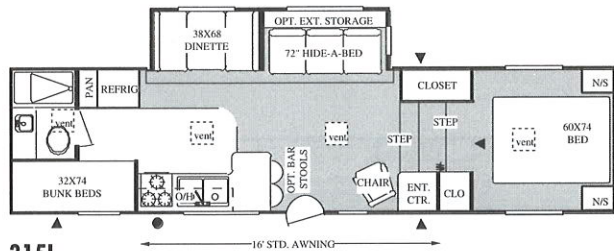
275R



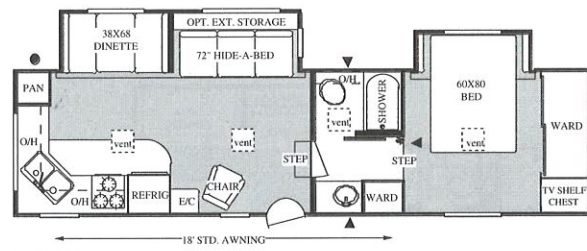
305L



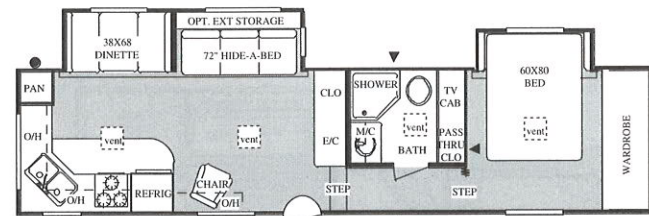
305R



315L



315RB



335RB

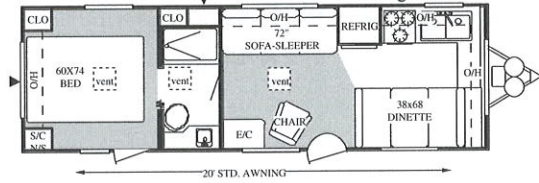
▲ = Under floor storage
● = Exterior wash down kit

Weights and Dimensions

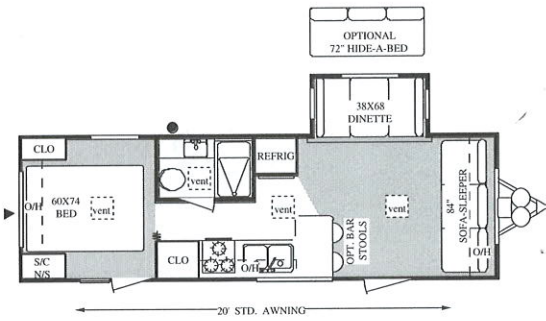
Model	275R	305L	305R	315L	315RB	335RB
Length	2810"	32'10"	31'4"	32'10"	31'4"	34'5"
Width	96"	96"	96"	96"	96"	96"
Exterior Height	9'2"	9'2"	9'2"	9'2"	9'2"	9'2"
Interior Height	6'6"	6'6"	6'6"	6'6"	6'6"	6'6"
GVWR	11500	11900	11900	12000	12200	12600
Base Weight	6560	8190	7800	8070	8605	9280
Axles Weight	5220	6410	6060	6275	6520	6885
Hitch Weight	1340	1780	1740	1795	2085	2395

1997 Floorplans

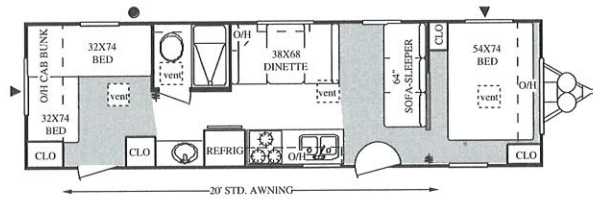
▲ = Under floor storage
● = Exterior wash down kit



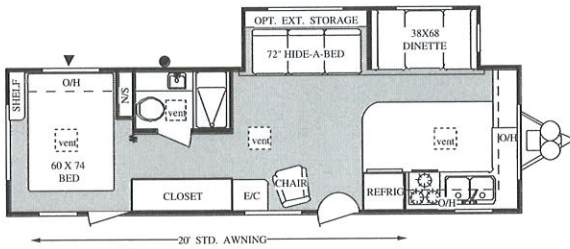
27F Available Option - 10



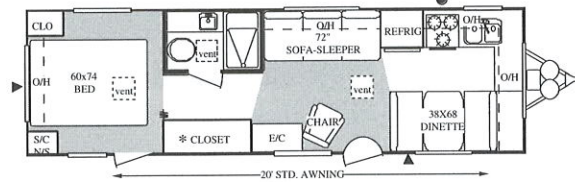
27S Available Options - 10, 14



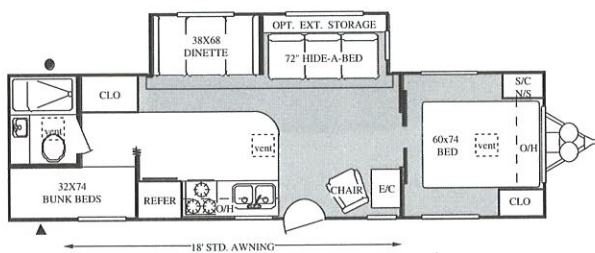
29H Available Options - 7, 10



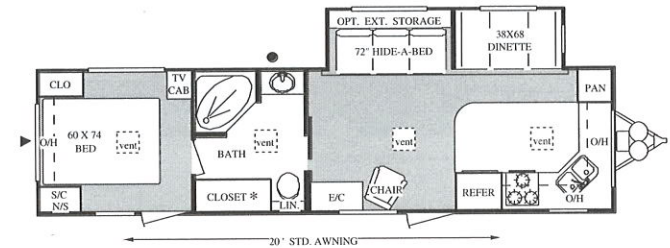
30C Available Option - 6



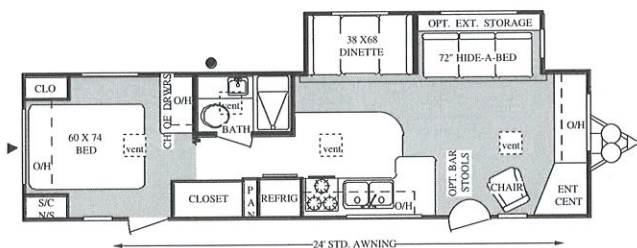
30H Available Option - 6



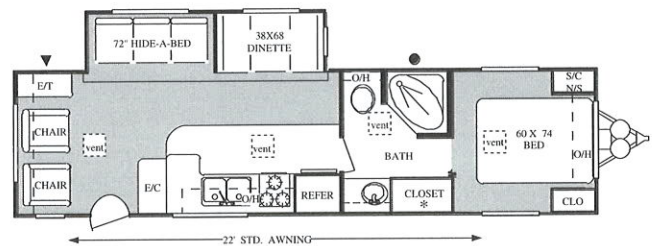
31F Available Option - 2



32F Available Option - 6

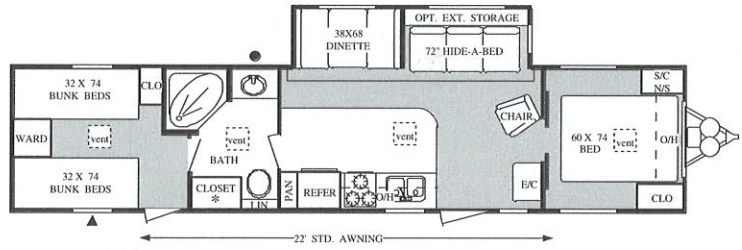


32R Available Option - 6

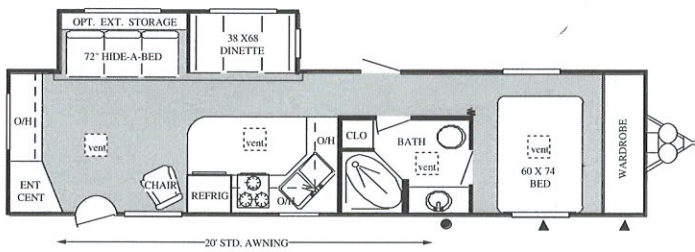


33R Available Option - 2

1997 Floorplans

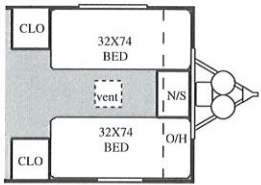


35F Available Option - 2, 5, 7

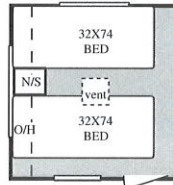


35R

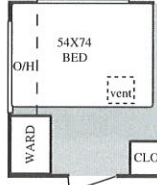
▲ = Under floor storage
● = Exterior wash down kit



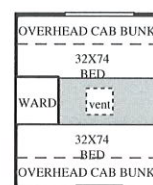
Option - 2



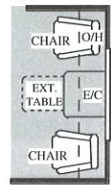
Option - 6



Option - 7



Option - 10



Option - 14

Weights and Dimensions

Model	27F	27S	29H	30C	30H	31F	32F	32R	33R	35F	35R
Length	27'10"	28'6"	30'6"	31'6"	30'6"	31'2"	33'9"	33'4"	33'10"	38'11"	36'8"
Width	96"	96"	96"	96"	96"	96"	96"	96"	96"	96"	96"
Exterior Height	9'2"	9'2"	9'2"	9'2"	9'2"	9'2"	9'2"	9'2"	9'2"	9'2"	9'2"
Interior Height	6'6"	6'6"	6'6"	6'6"	6'6"	6'6"	6'6"	6'6"	6'6"	6'6"	6'6"
GVWR	7800	7800	7500	10000	7700	10000	10000	10000	10000	10000	10000
Base Weight	4932	6170	5335	6600	5370	N/A	6835	6745	6639	7965	7500
Axles Weight	4150	5380	4870	5520	4660	N/A	5560	5620	6190	6680	6910
Hitch Weight	782	790	465	1080	710	N/A	1275	1125	780	1285	590

DAMON: Magnum Travel Trailers & Fifth Wheels

Standard Features

roof over wood decking • 2"x3" Floor framing with decking \ • 2"x4" Tapered roof framing 16" O.C. • Vacuum-bonded laminated sidewalls • Fiberglass insulation roof, floor and endwalls (R-7) • Durable underbelly • Decorative interior panels • Tandem wide track brake axles • 15" radial tires with sport wheels • Large exterior locking storage access w/radius door and finger pulls

Exterior Features: Black radius windows • Side mount awning • Entry door w/full screen door • Double entry steps (where available) • Triple entry steps (where available) • Deadbolt door lock • Front travel awning - travel trailers • Grab handle at entrance • Patio light • Front hook-up light • Battery ready • Break-away switch • Safety chains (travel trailers) • Sewer hose bumper w/end caps • Bumper cover • Roof rack and ladder (FW)

Appliances and Systems: Central air conditioning • 3-burner high output range w/oven • Microwave oven • Lighted power range hood • Systems monitor panel • Folding burner cover • Large double door refrigerator with black glass front • Electronic ignition furnace w/wall thermostat • Floor ducted heat • 6 gallon gas water heater • Large double bowl porcelain kitchen sink • Sink cover • Double LP gas bottles with 2-stage change over • LP gas bottle cover (travel trailers) • Power vent in bath • GFCI receptacle in bath, kitchen and exterior • 45-amp, 12-volt power converter w/battery

Construction: 5/8" tongue and groove plywood floor decking • E.P.D.M. rubber

charger • 30-amp, 120-volt electrical service • Cable ready TV • TV antenna with booster and wall jack • Auxiliary TV jack with shelf in bedroom • AM/FM/Cassette stereo with 4 speakers • Demand water system with 12-volt pump • Fresh water system (approx 36 gal) • Water heater by-pass kit • Grey water tank (approx 30 gal) • Black water tank (approx 30 gal)

Interior Features: Hardwood framed cabinet doors • Decor glass cabinet doors over sofa and bed • Swivel rocker chair (where available) • Wrapped cabinet stiles • Queen bed • Headboard and quilted bedspread • Innerspring mattress • Mini blinds • Designer shades w/drapes and valances - mini blind in kitchen • Laminated countertops • Mirrored medicine cabinet • Tub/shower w/surround N/A in 27H)

Popular Options

• Freestanding table (where available) • Twin beds (where available) • 31M and 35M BTU furnace (where available) • Double insulation in roof • Leveling jacks • Telephone jack (where available) • Solid oak refrigerator front • Spare tire, carrier and cover • Gas/electric water heater with DSI • Rear window awning (where available) • Shower door (where available) • Tinted safety glass • Solid oak cabinet doors • Countertop extension (where available) • 2 or 4 drawer wardrobe package (where available) • Dinette overhead cabinet (where available)



Go RVing™

Your nearest dealer:

<p>Your nearest dealer:</p>

P.O. Box 1107
Elkhart, IN 46515
1-800-860-5655



Due to constant product improvements, the equipment, specifications, component parts and standard/optional equipment are subject to change without notice or obligation. Diagrams may show equipment that is optional. Damon Corporation reserves the right to make changes in prices and models, and to discontinue models without notice or obligation. Components, parts, or chassis may have been manufactured at times other than the model year indicated. All capacities are approximate and dimensions are nominal. See your Damon dealer for full details. DC 1/97. © Damon Corporation - 1997. Printed in the USA.