



1997 JAYCO

EAGLE SL™

TRAVEL TRAILERS
& FIFTH WHEELS

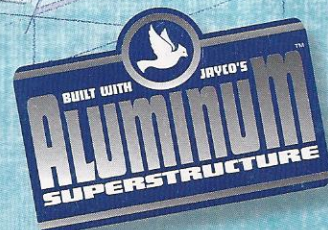


1" x 1" Tubular
Aluminum Frame

4" Roof Truss

Mig-Welded
Joints

Reinforced
1-1/2"
Aluminum Tubing





Eagle 210 SL
Travel Trailer,
Blue Decor

A SERIOUS ADVANCE IN RV FUN!

Eagle SL™ travel trailers and fifth wheels are the first *value-priced* RVs to offer an advanced aluminum-frame superstructure. And that's just the first of their many innovations; innovations that make for super dependability — and an extra measure of pleasure for you and your family!

The aluminum frame, strong yet lightweight, makes Eagle SL perfect for towing behind today's lighter, more fuel-efficient vehicles. Lengths under 27 feet help in this regard, too. And talk about peace of mind: Every frame joint is solidly welded; the all-aluminum roof has a three-inch arch and aluminum trusses for added strength where it counts; and sturdy aluminum framing surrounds all doors and windows.

Eagle SL is equally strong on comfort. Treat yourself

to its inviting, permanent sleeping accommodations... its relaxing lounge and dining area... its complete kitchen, where delicious, home-cooked meals become a reality... and its bathroom, with all the amenities you want when you travel. Savor as well its tasteful, contemporary decor. And take note of all its practical, comfort-enhancing features.

You'll be amazed we offer so much — especially at a price that's not just affordable, but downright *amazingly low!*

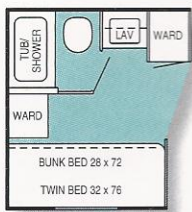
How do we do it? By bringing every bit of our 29 years of experience to bear on cutting costs without cutting corners.

Eagle SL. We've made it a place you'll love — so you'll love the places you take it even more!

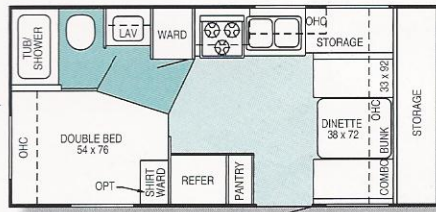


YOU'LL LOVE THESE FLOOR PLANS!

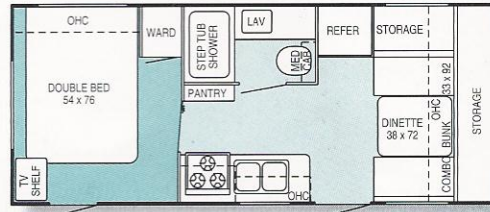
Eagle SL™ Travel Trailers



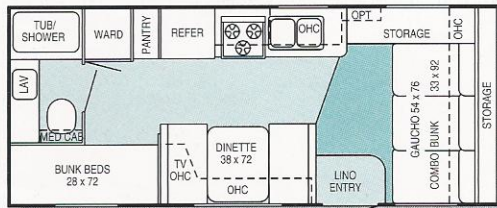
Twin Bunks
Option



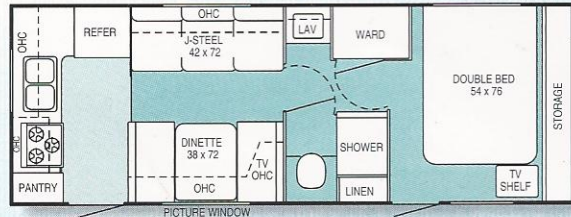
210 SL



230 SL

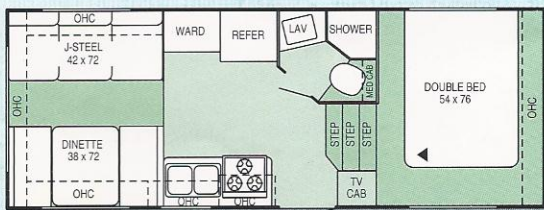


234 SL

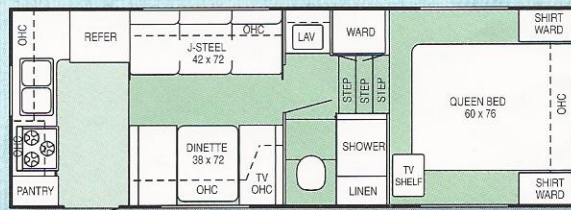


256 SL

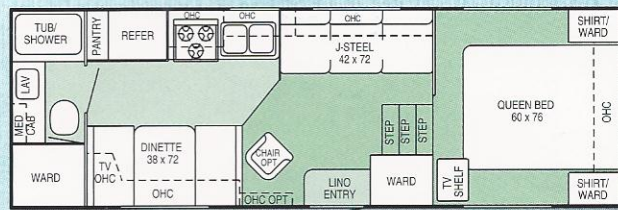
Eagle SL™ Fifth Wheels



211 SL



223 SL



247 SL

KEY TO FLOOR PLAN CODES:

☺ = Front

▶ = Outside Storage Compartment

1997 EAGLE SL TRAVEL TRAILER/FIFTH WHEEL SPECIFICATIONS

	EXTERIOR LENGTH	EXTERIOR HEIGHT*	BEDROOM INTERIOR HEADROOM	UNLOADED VEHICLE WT. (DRY WT. w/ STD. EQUIP. (LBS.))	APPROX. DRY HITCH WEIGHT (LBS.)	GROSS VEHICLE WEIGHT RATING (LBS.)	NET CARRYING CAPACITY (LBS.)	FRESH WATER TANK (GALS.)	GRAY WATER HOLDING TANK (GALS.)	TOILET W/WASTE HOLDING TANK (GALS.)	OPTIONAL AWNING LENGTH (FT.)
TRAVEL TRAILERS											
210 SL	21' 5"	118"	77"	3420	420	5700	2280	36	25	25	11
230 SL	23' 8"	118"	77"	3790	580	5800	2010	36	25	25	14
234 SL	23' 8"	118"	77"	3720	465	5800	2080	36	25	25	14
256 SL	26' 6"	118"	77"	4140	465	6400	2260	36	25	25	17
FIFTH WHEELS											
211 SL	22' 11"	122"	44"	3875	745	7000	3125	36	25	25	14
223 SL	23' 4"	122"	44"	4305	720	7000	2695	30	30	30	14
247 SL	24' 11"	122"	44"	4300	760	7000	2700	36	25	25	16

* Includes optional roof air conditioning

Far left: Eagle 247 SL Fifth Wheel, Brown Decor

Center: Spacious Eagle SL bathrooms come with a shower tub.

Right: Bedrooms are warm and comfortable, as shown here in the Eagle 210 SL Travel Trailer.

Blue

Brown

Loden Green

Teal

YOU'LL LOVE THESE FEATURES!



LP-gas bottles are stowed in their own easy-to-get-at compartment on the side of the RV.

On the cover: Eagle 234 SL Travel Trailer;
Eagle 247 SL Fifth Wheel



Inside the RV, you'll find this thoughtful entryway grab-handle.



A large-capacity, flush-mounted, double-door refrigerator is standard.



A huge exterior storage trunk is uniquely and conveniently positioned at the front of the RV. It has a full 25-cubic-foot capacity, an interior light, a strong, dent-resistant ABS lid and a support arm to hold the lid open.

MEGA-TRUNK

EAGLE SL STANDARD FEATURES

EXTERIOR FEATURES

- Full Width 25 Cu. Ft. Front Storage Compartment (Travel Trailers Only)
- Radial Tires
- Fiberglass Stoneguard on Front Window (Travel Trailers Only)
- Double Entrance Step, Self-Storing, Non-Skid
- Patio Light with Inside Switch
- White-Framed Entry Door
- Radius-Cornered Jalousie Windows
- Dead-Bolt Lock on Entrance Door
- Drain-Hose Carrier Bumper

HEAT, POWER AND WATER

- Dual 30-Lb. LP-Gas Tanks with Regulator — in Lockable Side Compartment (Single Tank in 211 SL)
- Water-Heater Bypass Kit
- Water-System Winterization Kit
- City Water Hook-Up
- Demand Water Pump
- 6-Gallon Gas Water Heater
- Brass and Copper Water Fittings
- Systems Monitor Panel
- 12-Volt Electric System with 110-Volt Converter
- 30-Amp Power Cord
- 110-Volt Exterior Receptacle
- Auto-Ignition Furnace with Thermostat
- In-Floor Ducted Heat
- LP Leak Detector
- Fire Extinguisher

LIVING ROOM

- Large Dinette
- J-Steel Sofa Converts to Bed (See Floor Plans)
- Oak-Grain Panel Doors and Drawers
- Interior Entrance Door Grab-Handle
- Deep-Pile, No-Track Carpeting with Thick Pad
- High Quality, Coordinated Fabrics Throughout
- Fabric-Covered Box Valances, Window Drapes and Tie Backs
- Roller Shades
- Decorative Glass in Overhead Cabinets
- Crank-Up TV Antenna with Signal Booster
- Cable TV Hook-Up

KITCHEN

- Residential-Style Mixing Faucet
- Residential-Style Stainless Steel Sink
- Sink-Cover Cutting Board
- Attractive, Coordinated Countertops
- Large Flush-Mount, Double-Door Refrigerator
- Three-Burner Range with 9,000-BTU "SuperBurner" and Piezo Ignition
- Range Hood with Light and Fan
- Oversized Oven
- Extra-Long Silverware Drawer
- Deep, Lipped Overhead Cabinets

BEDROOM

- Innerspring Mattress (Some Models)
- Bed Struts for Easy-Lift-Up Beds, Storage Underneath (Some Models)
- Coordinated, Quilted Bed Spread
- Radius-Cornered Vented Windows
- TV Cabinet or Flip-Up TV Shelf (See Floor Plans)

BATHROOM

- 12-Volt Power-Vent with Frosted Lens
- Seamless ABS Tub/Shower Surround
- Wood Medicine Cabinet and a Mirror
- Shower Curtain
- Towel Holder

INTERIOR OPTIONAL FEATURES

- Raised-Panel Oak Doors and Drawers
- Bi-Fold Shower Door
- Mini Blinds
- Tinted Safety Glass
- Battery-Operated Clock
- Phone Jack
- Microwave Oven with Carousel
- Roof Air-Conditioning
- Bath Skylight (230 only)
- Range Cover
- 6-Gallon Gas/Electric Auto-Ignition Water Heater
- Coach Battery
- Stereo AM/FM Cassette

EXTERIOR OPTIONAL FEATURES

- Rear Window Stoneguard Awning (Models with Rear Windows)
- Patio Awning
- Spare Tire and Carrier
- Spare Tire Cover
- Stabilizer Jacks
- Rubber Roof
- Insulated Holding Tanks
- Extra Roof Insulation
- Outside Shower

For Further Information and Prices, See:

CONNELY'S CAMPER CORNER
335 South 5th Ave.
BROKEN BOW, NE 68822
308-872-6603

We cordially invite you, as we do all Jayco owners, to join the Jayco Jafari International Travel Club. Ask your dealer about the Jafari chapter, or "flight," as it's called, in your area. Or write Jayco direct.



LIMITED WARRANTY

Jayco recreation vehicles are warranted to the original owner for twelve (12) months from the date of purchase against defects in materials and workmanship. Please refer to the limited warranty available at your Jayco dealership.

PLEASE NOTE

All information in this brochure is the latest available at the time of publication approval. Jayco reserves the right to make changes and to discontinue models without notice or obligation. Pictures in this brochure may show optional equipment. RVs built for sale in Canada may differ to conform to Canadian codes.



Jayco®

YOU'LL LOVE THIS PLACE!

Jayco, Inc. • P.O. Box 460
Middlebury, IN 46540



Printed on Recycled Paper

© 1996 Jayco, Inc. 0796 BJTA-17247 Litho in U.S.A.