

1997

Challenger

Challenger Fifth Wheels • By Damon Corporation



How a Damon Challenger
can help you look forward
to years of great vacations.

New StepSaver™ kitchen
is model of efficiency
and convenience.

Embarking on a sea
of dreams.

Challenger Fifth Wheels.

With a Challenger behind, great vacations are ahead.

Hook up with a new Challenger Fifth Wheel and you can look ahead to years of great vacations and travel enjoyment. For you. Your family. And your friends.

Our premium construction will take you a long way.

Modern, computer-aided design engineering (CAD) has been combined with classic-American craftsmanship to ensure that your Challenger will go the extra mile, year after year, and still be as sound and great looking as when it was new. Challenger Fifth Wheels feature sturdy I-beam steel frames, welded aluminum sidewall studs and corrosion-resistant laminated fiberglass exterior construction to give you an uncommonly durable recreational vehicle. The smooth, clean finish in Damon's own Ice White™ enhances the overall styling. The roof design utilizes bow truss rafters to further enhance your fifth wheel's structural integrity instead of the 2x4s used by other companies.



Space and comfort take center stage.

Thoughtful construction details continue inside the Challenger with superior insulation engineering and our Comfort Control Center™ temperature system. The domed roof of the Challenger features a unique, molded waffle design for outstanding insulation, acoustical enhancement and super-cool air conditioning through its improved ductwork. The system makes use of fundamental thermodynamics by delivering warm air from the floor, where it naturally rises, and cool air from the ceiling, so it naturally falls. And you'll never be too warm or too cold with thermostatically controlled heating.



Damon also gives you all the space you need to enjoy your travel, especially when your new Challenger is equipped with our Easy Glider™ slide-out room. This exclusive new feature levels the floor automatically as you slide out the additional room.



Surf or turf

The road to good times is best travelled in a quality recreational vehicle like the Challenger Fifth Wheel. Whether your idea of good times is a relaxed stroll on the beach with your favorite friend (four-legged or otherwise) or high tee time at a great golf resort in the mountains, there's so much to see, do and look forward to when you live the RV lifestyle.



There's no extra step to trip anyone up. And, like the name implies, the Easy Glider moves the slide-out room smoothly and quickly into position ... at the touch of a button.

When it comes to amenities, Challenger has so much more than ever before.

This year's Challenger sets new standards for interior beauty and comfort. The StepSaver™ kitchen features a three-burner, high-output range with oven; large, double-door refrigerator; and super-sized, double-bowl porcelain sink with cover. And in most models the large microwave oven is located conveniently at elbow height — no more lifting hot food over your head. Of course, the beautifully crafted cabinetry features luxurious hardwood-framed doors for exceptional quality, styling and durability. New this year is an exciting choice of wood grains — the traditional Pamrico Oak popular in previous Challenger Fifth Wheels, plus our new, lighter Doral Oak finish.



The bedroom of your Challenger reflects quiet luxury with a queen-size bed dressed in designer bedspread and shams to match the drapes and valances. Throughout the interior you'll find surprising bonuses we call Damon Designer Details™. Extra "touches" like an ample storage drawer under the sink. Pin-up lights. Coordinated trim. Countertop edges color-coordinated to match your chosen decor package. And this year's Challenger even features white enamel-framed windows and optional ceiling fans.



Every Challenger passes our inspection before it passes yours.

Damon's own StartRight Quality Assurance™ program is our promise to our customers that their Challenger Fifth Wheel is in top-notch condition.

DAMON: Challenger Fifth Wheels

★
StartRight
Quality
Assurance
★

Unlike many other manufacturers, Damon conducts a rigorous 80-point inspection test on every model before it ever goes to your dealer. This procedure helps ensure that every system in your RV is up to par for your enjoyment and

satisfaction — and ours.

Damon Corporation has built a superior reputation on the quality, dependability and absolute *value* of every RV we manufacture. So if you're looking for a fifth wheel that offers premiere features at a very affordable price, see

the new Challenger at your nearest Damon dealer today. You'll be at home in a Challenger, and the biggest challenge you'll ever face is making sure each vacation is as good as the next.

(Below) (Model 34TSB) Damon's new StepSaver kitchen truly is a model of efficiency. Shown here with Pamrico Oak cabinetry and featuring double-bowl porcelain sink, high-output range and large microwave.



DAMON: Challenger Fifth Wheels



Embarking on a sea of dreams

What's your dream vacation? We're constantly amazed at the variety of ways our customers find to use their Challenger Fifth Wheels. Some like to go to the beach. Some to the backwoods. Some to the foothills. Write and tell us what you like to do with your RV. We'd love to hear how you spend your dream vacations.



DAMON: Challenger Fifth Wheels



(Above left) (Model 34TSB) Easy Glider system in Challenger Fifth Wheel enables slide-out room to have level floor throughout. Room includes built-in desk and comfortable upholstered furniture in SpringRain decor with Doral Oak finish.

(Left) (Model 34TSB) Be the envy of family and friends with the Challenger's extra-large, extra-luxurious entertainment center.

(Above) (Model 34TSB) Step into (but not up to!) the extra spaciousness provided by the slide-out extension to the living and dining areas of the Challenger. Damon's exclusive Easy Glider system levels the floor automatically at the touch of a button. There's no step to trip you up and the extra 3" - 4" of height enhances the open feeling of the total room, shown here accented by the coordinated upholstery, drapes and valances in Damon's new SpringRain decor package.

DAMON: Challenger Fifth Wheels

Optional foam-insulated central air ducting, an enhancement to DAMON's Comfort Control Center™, offers efficient distribution of the cool air.

Each Challenger uses only Fantastic® roof vents which are thermostatically controlled with two speeds for super ventilation.

Natural lighting abounds in every Challenger bathroom provided by the standard skylight.

2" x 4" bow truss rafters 16" on center secure the roof foundation and facilitate efficient water run-off.

New, thicker 7/16" roof decking provides superior durability, strength and support for roof cargo.

Fully integrated front and rear fiberglass caps display luxury and enhance your Challenger's exterior (optional).

The welded aluminum framing is strong, yet lightweight, to provide safety and structural integrity.

Full 1 1/2" expanded polystyrene block foam insulation in your Challenger sidewalls and floor increases energy efficiency and helps to provide an excellent acoustical barrier.

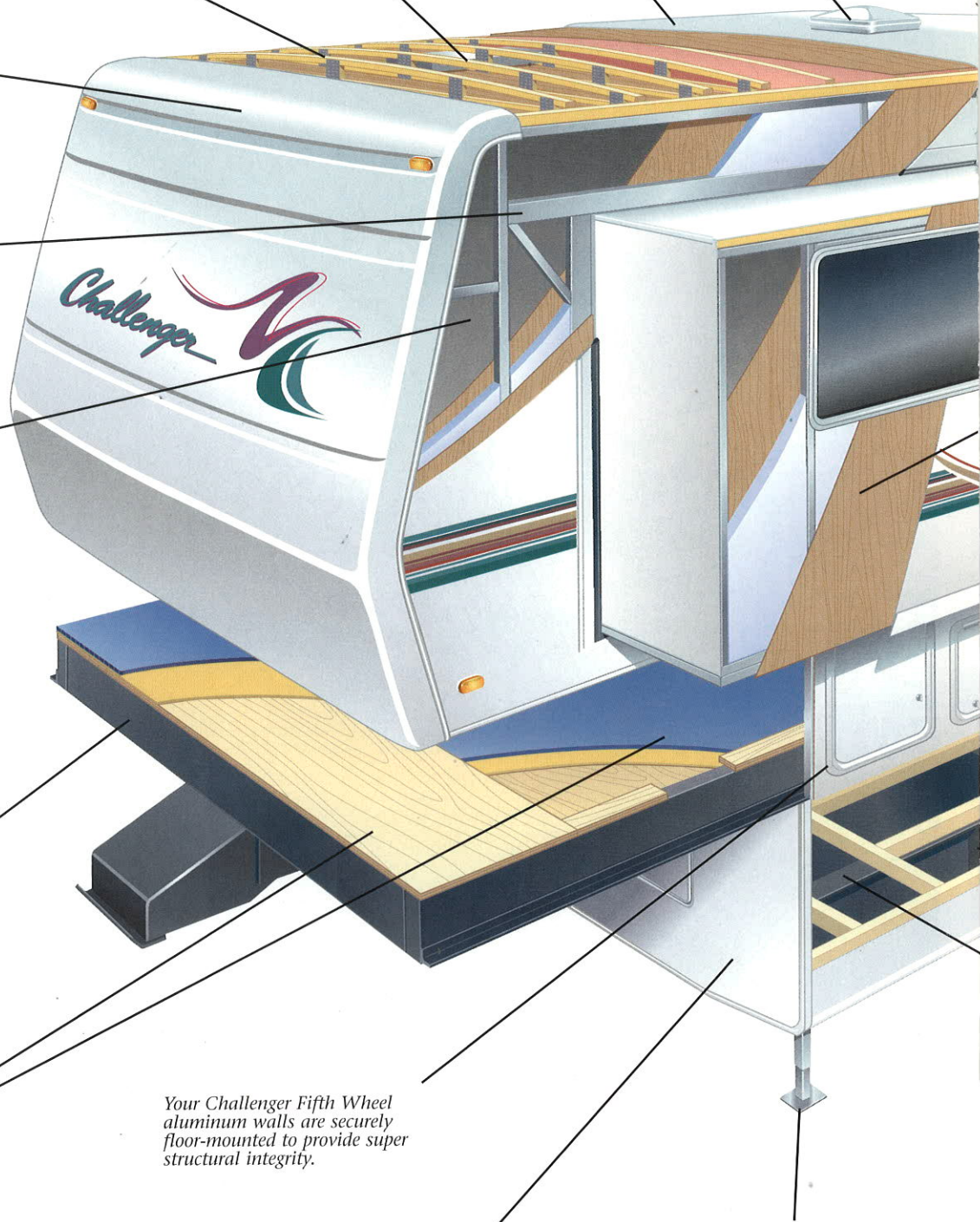
The retractable, skid-resistant triple-entrance step offers excellent traction and easy access into your Challenger Fifth Wheel.

High-quality residential carpet and padding provides comfort and insulation on top of your 5/8" tongue and groove floor decking.

Your Challenger Fifth Wheel aluminum walls are securely floor-mounted to provide super structural integrity.

Resilient, pebble-grain stone guard helps prevent road debris damage.

Electric front jacks provide safe, level camping at the push of a button (optional).



DAMON: Challenger Fifth Wheels

The 15,000 BTU central air conditioning is thermostatically controlled for superior distribution of cool air (optional).

One-piece E.P.D.M. seamless rubber roof offers a full 12-year warranty and is specially formulated for exposure to the sun and natural elements. Also offers acoustical and thermal insulation as well.

Aluminum roof rack and ladder for convenient access to roof storage (optional).

The Challenger Fifth Wheel Ice White™ exterior is constructed of durable, easy-to-maintain, laminated smooth fiberglass.

Radius windows, accented with Ice White™ frames, are constructed of corrosion-resistant aluminum for reduced maintenance.

Every Challenger Fifth Wheel boasts DAMON's exclusive Easy Glider™ hydraulic slide-out system with flush, laminated floors that provide additional head room and display a smooth, flat surface at the push of a single button.

Challenger's 4" steel tube bumper combines safety as well as convenient sewer hose storage.

As part of DAMON's 80-point StartRight Quality Assurance Program™ each Challenger Fifth Wheel undergoes full inspection to ensure safe, trouble-free camping.

Each fully lighted and lined exterior pass-through storage compartment is sealed with insulated doors compatibly-keyed for single-key access to all cargo.

The enclosed underbelly with forced air heat on all holding tanks (fresh water and waste water), provides worry free, extended seasonal use.

Each Challenger Fifth Wheel is constructed with heavy-duty steel outriggers to provide additional wall support for added strength and stability.

Welded 10" cambered steel I-beam frame provides rugged strength and incredible safety.



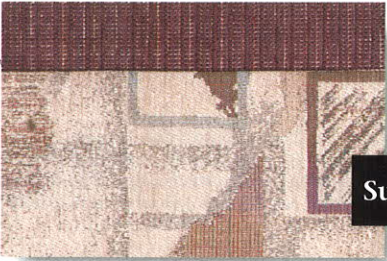
DAMON: Challenger Fifth Wheels



SpringRain



WinterMoss



SummerBerry



AutumnWheat



DoralOak



PamricoOak



(Above) (Model 34TSB) There's nothing cozier to come home to than the delightful master bedroom of the Challenger Fifth Wheel with its queen-size bed and decorative bedspread and window dressing, shown here in the SpringRain decor package.

(Left) (Model 34TSB) When it's time to call it a night, the dinette area hide-a-bed converts quickly into stylish and comfortable sleeping quarters.



Go RVing™

Your nearest dealer:

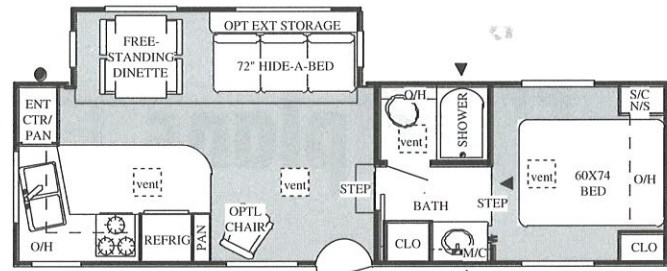
JERRY'S TRAILERS & CAMPERS
2601 S. 13th St.
Norfolk, NE 68701

P.O. Box 1107
Elkhart, IN 46515
1-800-860-5655

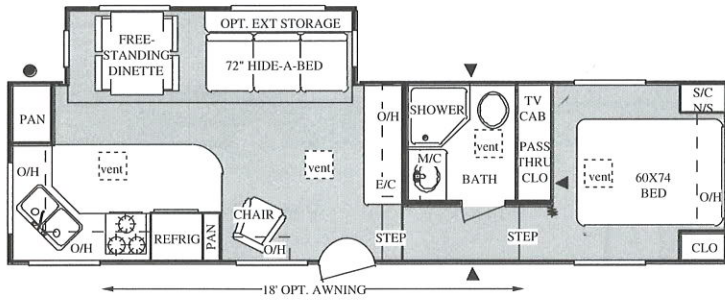


Due to constant product improvements, the equipment, specifications, component parts and standard/optional equipment are subject to change without notice or obligation. Product photography or diagrams may show equipment that is optional. Damon Corporation reserves the right to make changes in prices and models, and to discontinue models without notice or obligation. Components, parts, or chassis may have been manufactured at times other than the model year indicated. All capacities are approximate and dimensions are nominal. See your Damon dealer for full details. DC 1/97. © Damon Corporation - 1997. Printed in the USA.

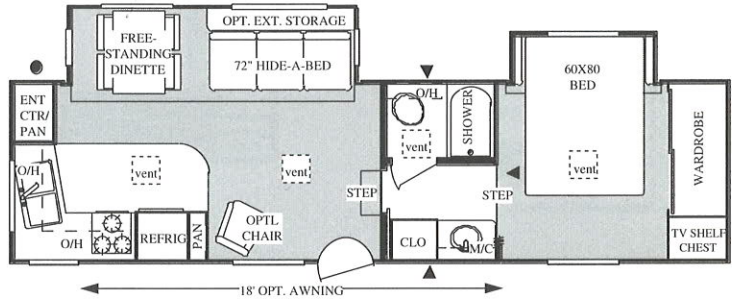
1997 Floor plans



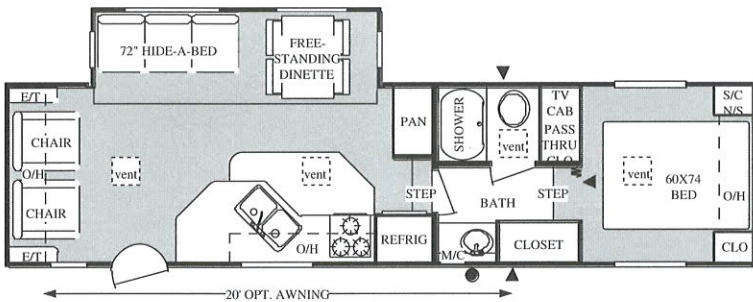
28 ML



30 RK



31 MLB Available Option: 9



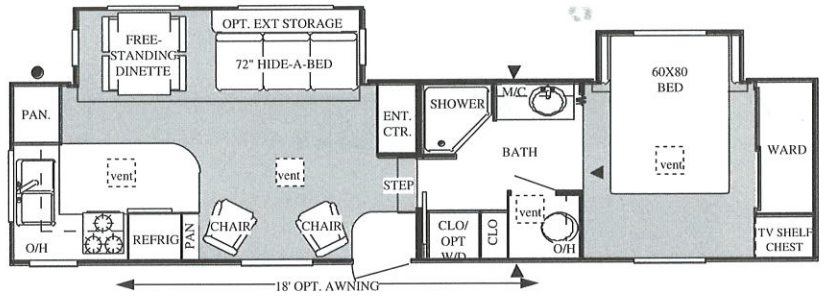
31 RL

▲ = Under floor storage
● = Exterior wash down kit

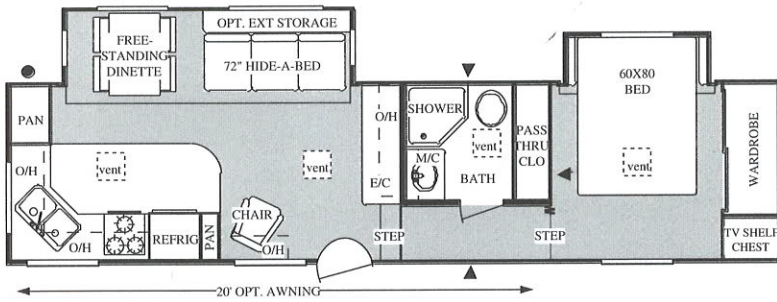
Damon
CORPORATION

1997

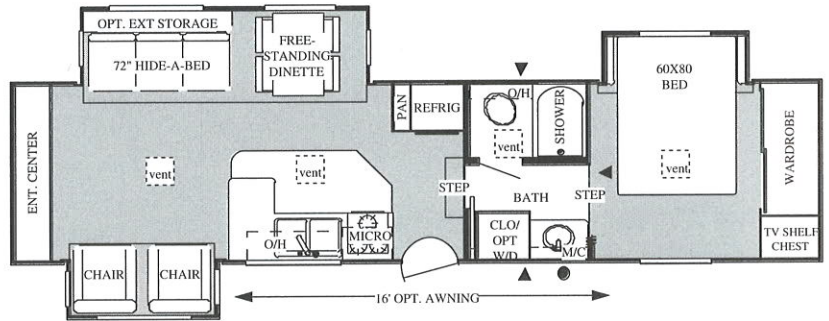
Floor plans



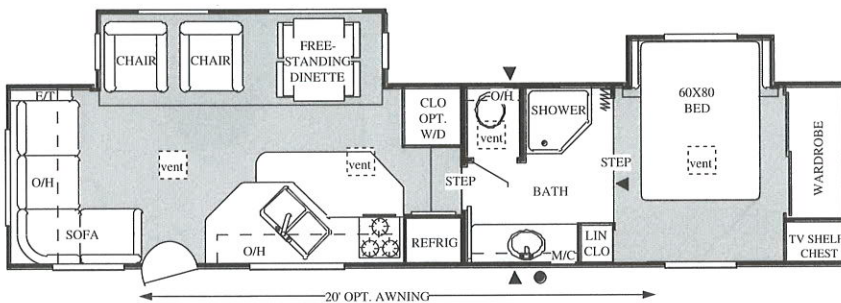
33 MLB Available Option: 9



33 RKB Available Option: 8



34 TSB Available Option: 8

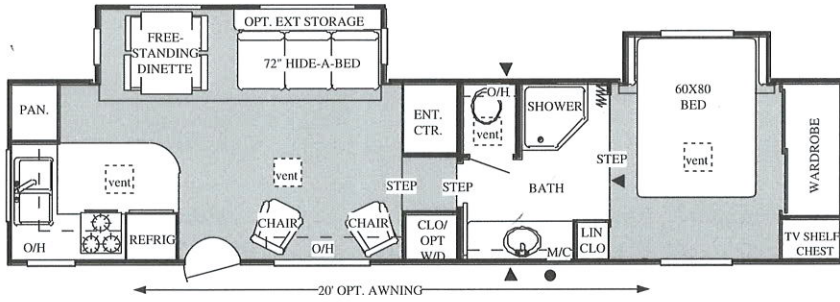


35 RSB Available Option: 9

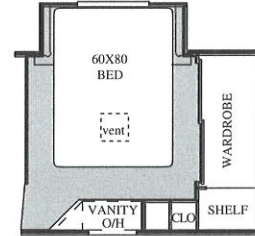
▲ = Under floor storage
● = Exterior wash down kit

1997 Floor plans

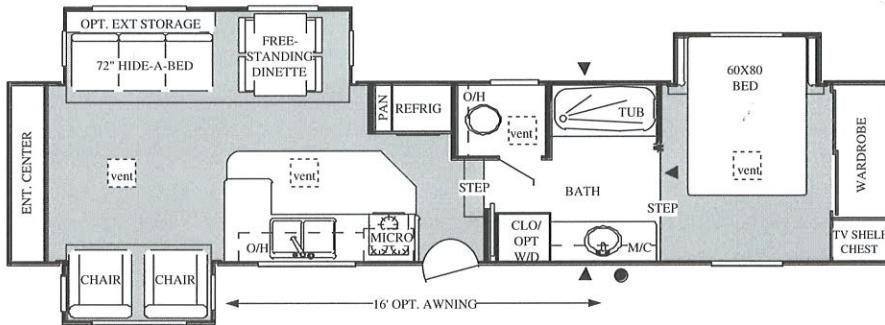
▲ = Under floor storage
● = Exterior wash down kit



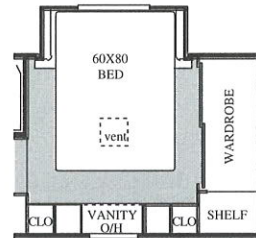
36 MLB Available Option: 9



Option 8



38 TSB Available Option: 8



Option 9

Weights and Dimensions

Model	28ML	30RK	31MLB	31RL	33MLB	33RKB	34TSB	35RSB	36MLB	38TSB
Length	29'3"	32'3"	31'8"	33'4"	35'10"	34'6"	36'0"	37'3"	37'0"	39'0"
Width	96"	96"	96"	96"	96"	96"	96"	96"	96"	96"
Exterior Height	12'0"	12'0"	12'0"	12'0"	12'0"	12'0"	12'1"	12'1"	12'1"	12'1"
Interior Height	6'6"	6'6"	6'6"	6'6"	6'6"	6'6"	6'6"	6'6"	6'6"	6'6"
Interior Cabover Height	69"	69"	69"	69"	69"	69"	69"	69"	69"	69"
GVWR	11500	11900	12200	11900	12300	12700	13800	12400	N/A	N/A
Unloaded Vehicle Weight	7270	9400	9080	8393	9620	9430	10915	9830	N/A	N/A
Axle Weights	5890	7700	7050	6653	7730	7130	9090	7800	N/A	N/A
Hitch Weight	1380	1700	2030	1740	1890	2300	1825	2030	N/A	N/A

DAMON: Challenger Fifth Wheel

Standard Features

Construction: 2" x 3" floor framing with 5/8" tongue-and-groove plywood floor decking • Truss roof rafters 16" O.C. • Easy Glider™ slide-outs including flush, laminated floors • Laminated fiberglass exterior with aluminum tube framing • Polystyrene insulation (sidewalls) • Decorative interior panels • Enclosed holding tanks • Durable underbelly • Radius skirt • E.P.D.M. rubber roof • R-7 fiberglass insulation (floor, roof and end walls) • Reinforced and wired for roof A/C • Tandem wide-track brake axles • Double insulation in roof and floor • 15" radial tires with sport wheels on 29' - 31' models; 16" radial tires with sport wheels on 33' - 40' models • Radius-style cabinetry • White radius windows • 7/16" full-roof decking

Interior Features: Hardwood-framed cabinet doors • Mini blinds with valance in kitchen • Mini blinds with drapes and valances in living room • Roller shades with drapes and valances in bedroom • T-molded countertops • Double-bowl, porcelain kitchen sink • Free standing dinette • Mirrored medicine cabinet • Tub/shower with surround • Skylight in shower • Bedspread and pillow shams • Sink cover • Queen bed • Bed bases with interior lift-up access (island beds) • Stand-up head room in slide-outs • 12v lights in slide-outs • No divider wall in slide-outs • Deluxe metal roller drawer guides

Exterior Features: Ice White™ smooth fiberglass exterior • Awning rail • White radius-top entry door with full screen door and deadbolt door lock • Exterior entry-assist grab handle • Patio lights • Battery ready • Break-away switch • Triple entry steps • Sewer hose bumper • Large exterior storage access

Appliances & Systems: Microwave oven with turntable • 3-burner, high-output range and oven with piezo ignition, black top and black-glass front • Folding burner cover • Lighted power range hood • Systems monitor panel • Double-door refrigerator • Electronic-ignition, floor-ducted furnace • 6 gallon gas/electric water heater • 2-30# LP gas bottles with auto change-over • LP leak detector • Power vent in bath • GFCI receptacle in bath, kitchen and exterior • 45 amp, 12v power converter with battery charger • 30 amp, 120-volt electrical service • TV antenna with booster • Cable ready • AM/FM cassette stereo with 4 speakers • Demand water system with 12-volt pump • Hydraulic hand pump override • Water heater by-pass • Auxiliary TV jack and shelf • Fresh water system (approx. 56 gallons) • Grey water tank (approx. 37 gallons) • Black water tank (approx. 37 gallons)

Popular Options

Central air conditioning • Wall-hugger recliner • Larger furnace • Double fiberglass insulation (main floor, roof and end walls) • Electric jack(s) • Leveling jacks • Extra-large refrigerator • Ice-maker • Roof rack and ladder • Extra sink cover • Spare tire, carrier and cover • Aluminum bumper cover • 10-gallon gas/electric with electronic ignition water heater • Rear window awning (where available) • Solid-oak cabinet doors • Pillowtop innerspring mattress • Fantastic roof vent • Washer/dryer (where available) • Side-mount awning • 50 amp service • Ceiling paddle fan • Convection/microwave combination • See your dealer for additional options



Go RVing™

Your nearest dealer:

--

P.O. Box 1107
Elkhart, IN 46515
1-800-860-5655



Due to constant product improvements, the equipment, specifications, component parts and standard/optional equipment are subject to change without notice or obligation. Diagrams may show equipment that is optional. Damon Corporation reserves the right to make changes in prices and models, and to discontinue models without notice or obligation. Components, parts, or chassis may have been manufactured at times other than the model year indicated. All capacities are approximate and dimensions are nominal. See your Damon dealer for full details. DC 1/97. © Damon Corporation - 1997. Printed in the USA.