



# *Travel Supreme*

FIFTH WHEELS & TRAVEL TRAILERS



*Affordable Luxury*



GREEN REFLECTIONS



*Travel Supreme*  
welcomes you to *Affordable  
Luxury*. You've dreamed of  
having an RV of this class for a  
long time, and now Travel  
Supreme has made it possible.

**T**raditional oak is a standard  
in all Travel Supreme  
recreational vehicles. A rich  
blend of textures and accents  
emerge to create a warm,  
spacious home for the  
experienced RV'er.

**O**ne of the most difficult  
achievements in any craft is to  
maintain simplicity while  
remaining practical. This is the  
key to *Affordable Luxury*,  
and now it is available to you  
from Travel Supreme.

Travel Supreme reserves the right to make  
changes in products, components, materials, and  
prices at any time without obligation.  
Some photos are shown with optional equipment.  
Please see Standards and  
Options list for complete details.

# Affordable Alternatives



We realize everyone's tastes differ. That is why we offer more than one interior hardwood and decor. This Bleached Oak option has remained popular with many of our customers. It is bright and adds a cheerful mood to your coach.

On the other end of that spectrum is the elegance of Walnut. The rich, deep natural beauty of Walnut speaks for itself. This option will always be a classic favorite with some. That is why we offer a variety of options...

so our customers can always find a combination that is appealing to them and their expense account. Another important key to *Affordable Luxury*.

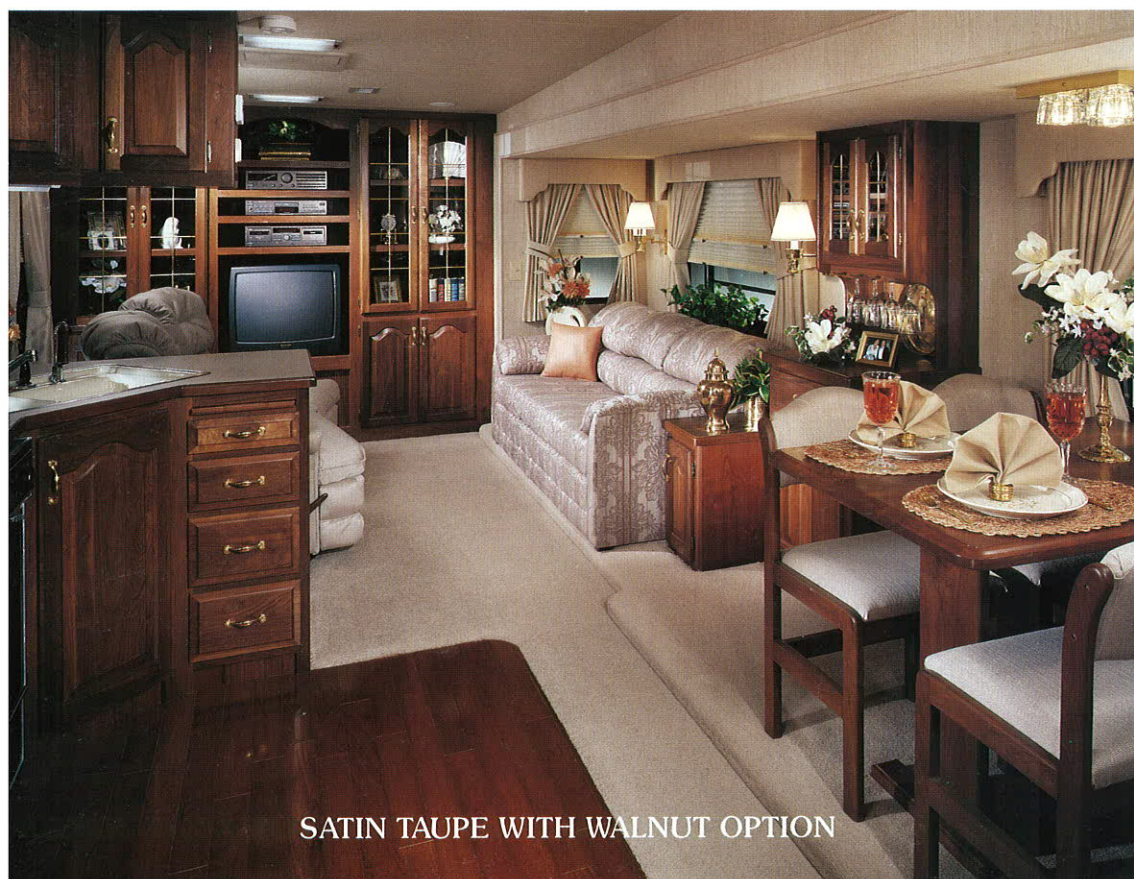
## Interior Decors

### STANDARD

- Rich Tradition
- Just Peachy
- Classic Rose
- Satin Taupe
- Blue Illusion
- Green Reflections

### OPTIONAL CONTEMPORARY

- Tropic Green
- Tranquil Tan



# CONSUMER REPORT

## WHAT TYPE OF CONSTRUCTION IS BEST FOR THE FULL TIME RV'ER?

There seems to be this endless argument about which type of construction is best suited for RV's. Basically there are three different types of construction, wood, aluminum and lamination. Lamination may use either wood, aluminum or steel. All can be good methods of construction if used for the right purpose.

The first question that should be asked before choosing which is best for you is how will I be using my RV and for what purpose? If occasional camping is the purpose, then all three types of construction are fine. RV's that will be used for "Extended Living" or "Full Time Living" are put through different types of conditions, such as a wide range of temperature differences, in-

creased weight loads, increased road mileage, etc. For this type of use "Wood Construction" has proven to give an outstanding performance.

Many consumers assume that an RV built with an aluminum structure is lighter in weight than wood construction units. While this is generally true on smaller units (30' and under), it is not true for most RV's built for full timers. Many are of equal weight. Before purchasing an RV, check the weight with the RV equipped the way you will be buying it.

Road fatigue on Super-Structures can also be a factor. On RV's with a wood Super-Structure there is no chance of stress cracking on welding joints.

Repairs that may be needed

from an accident can be made more cost effective with wood Super-Structure RV's.

One of the most important factors to consider when buying a unit for "Full Timers" is how inside living conditions will be effected under hot or cold temperatures. Aluminum and metal Super-Structure RV's transfer more cold to the inside of your RV which may result in condensation forming in the walls and roofs. This greatly reduces insulation value. Heat is also transferred which makes it more difficult to cool.













The longevity of wood is obvious with homes and buildings lasting more than 100 years. It is true that in the early years of the RV industry that dry rotting of

wood was a problem. The cause of this problem usually came from leaking roofs. Since the early 80's, one piece roofs (metal, fiberglass and rubber) have become standard equipment on most RV's. This has greatly reduced leaking problems. The argument that an aluminum or steel Super Structure RV won't dry rot is misleading due to the fact that all RV's still have wood floors and subfloors. With the natural flow of water to go down it will still reach the floor of any RV.

Since we may not have been able to answer all your questions concerning construction techniques, for more information please feel free to contact TRAVEL SUPREME, INC.

*Travel Supreme's High Line Fifth Wheels & Travel Trailers are now available coast to coast...*

### CHECK US AGAINST ALL THE HIGH LINES!

-  Heavy Wall 8" Frame—Double 8" w/Slide-Outs
-  Extra Heavy Duty Axles w/Shocks
-  Goodyear™ Radial Tires 16"
-  Basement Storage (Complete Unit)
-  All Plywood Floor (No Plywood Substitutes)
-  Glued and Screwed Construction
-  Rubber Roof w/ 3/8" Plywood (Complete Roof)
-  4 Seasons Insulation Package (R-19 Roof, R-26 Underbelly, R-8 Sidewalls)
-  Dupont Teflon® Carpeting w/ Heavy Pad
-  A Wide Variety of Floor Plans Engineered for the Experienced RV'er (Up to 18' Slide-out Rooms Available)
-  RVIA Code and Safety Approved
-  Management has 50 Years Experience in Manufacturing RV's



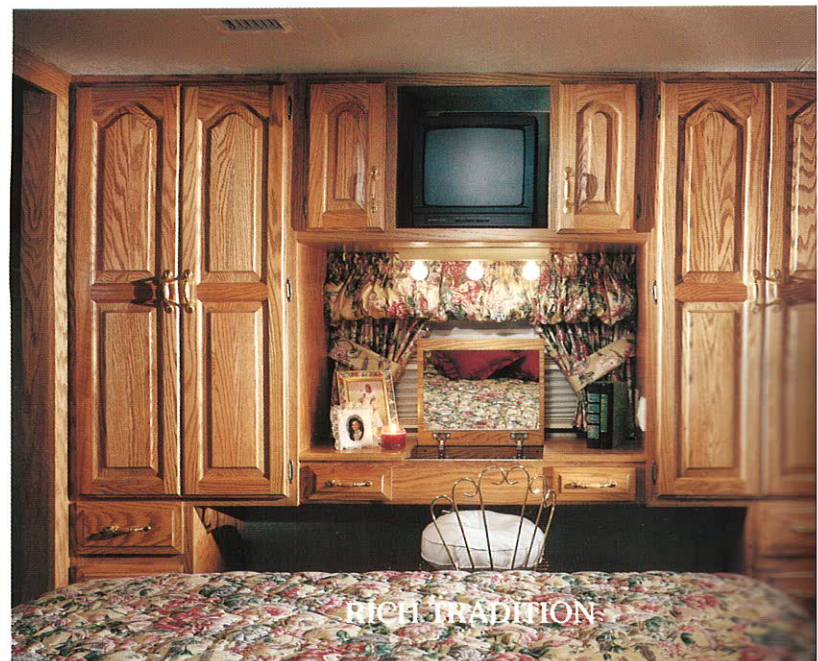
### JOIN THE SUPREME TRAVEL CLUB!

Travel Supreme's new exclusive RV club is gaining popularity fast. The club offers benefits, discounts and organized activities for its members. It is a fun way to make new friends and travel. This picture shows our members enjoying themselves in front of the new Grand Palace in Branson, Missouri. Ask your dealer for details on joining.





RICH TRADITION



RICH TRADITION

# Luxury Throughout

From front to rear and everywhere in between, these coaches are designed and created for function as well as luxury. Abundant space, storage and convenience are the focus.

Large slide-outs are incorporated wherever possible to add to the already spacious floor plans. The cabover bedroom utilizes one which in turn creates ample room for the built-in vanity feature.

The entertainment center helps organize a busy area with an attractive design. The walk-thru bath affords both space and privacy.



## CUTTING BOARD

This built-in cutting board offers extra room for meal preparation and a safe, convenient cutting surface. It slides clear out for easy cleaning, and locks in place during travel.

## WOOD VALANCES

The wood valance option is a handsome addition to any room. The beauty and warmth of wood combined with the solid look gives your RV a residential feel.



## Features

### LINED CURTAINS

Lined curtains provide long-life and more uniform hang. They also insulate your coach against hot sun or extreme cold. This standard feature is one reason why our coaches are so adaptable to different climates.

### MATTRESS

For comfort and health, Travel Supreme offers as standard the pillow top mattress. This premium residential style mattress will provide years of comfortable rest and sleep.

# CONSTRUCTION FEATU



Double 8" Frame (3 Year Warranty)—  
Roller Bearing Slide-Out Tubes w/Steel Support



R-26 Fiberglass Insulation in Underbelly—  
Heated Holding Tanks



Completely Enclosed Metal Underbelly  
(No Plastic)



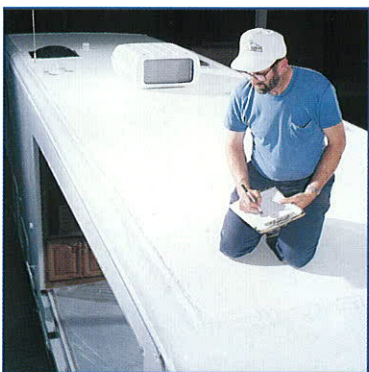
Truss Style Rafters w/1" Crown—Galvanized  
Steel A/C Ducts w/Reflective Wrap Insulation



4 Season Insulation Package: R-19 Roof,  
Front & Rear; R-8 Sidewalls; R-26 Underbelly



3/8" Plywood Complete Roof  
(No Plywood Substitutes)



E.P.D.M. Rubber Roof (10 Year Warranty)



The Finest Engineered Slide-out  
Available Today



Large Basement Provides Lots of Protective  
Storage and Easy Access.



Fifth Wheel Model 36RKSS



Fifth Wheel Model 36RKSS with Cabover Slide-out

# RES AND WARRANTIES



5/8" Plywood Flooring on 2x2 and 2x4 Framing (No Plywood Substitutes)



Glued and Screwed Construction on Complete Wood Super-structure (3 Year Warranty)

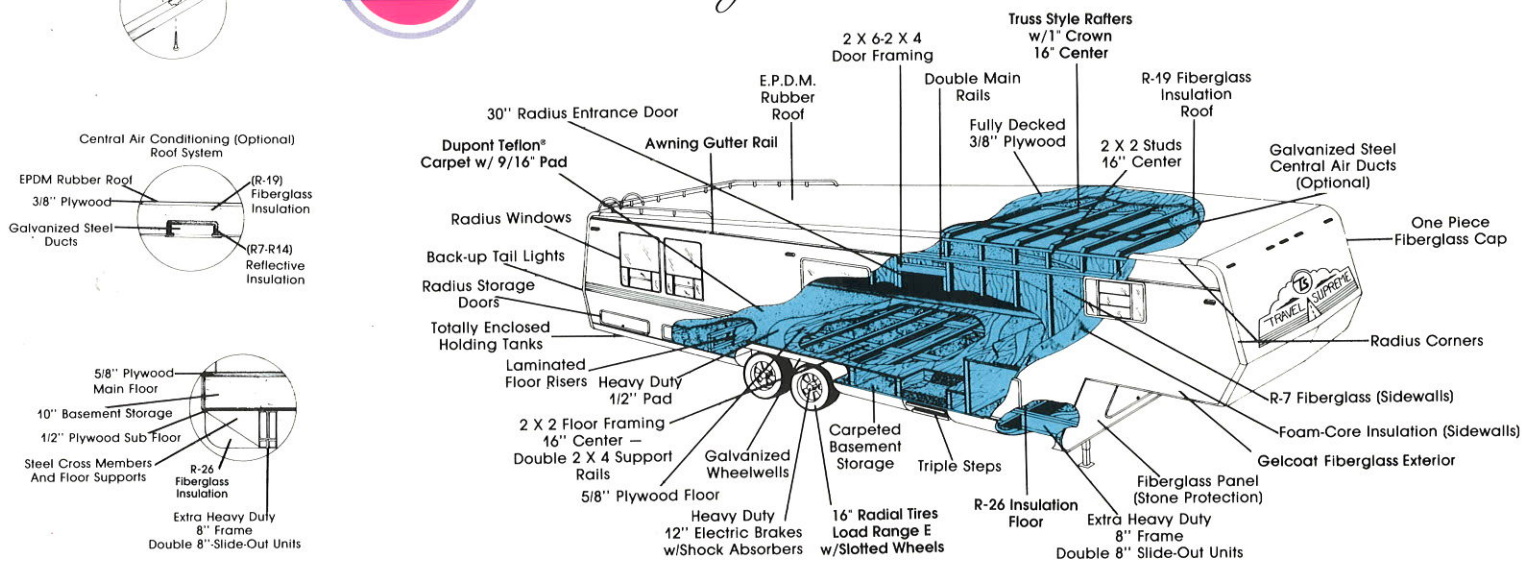


Steel Reinforcement Around All Super Slide-outs Is Standard

Glued & Screwed Construction



## Quality Construction



**OPTIONAL AUTOMOTIVE STYLE BUMPER**  
This molded, streamlined design eliminates the square, sharp corners and looks great

**LIMITED ONE (1) YEAR WARRANTY**  
Travel Supreme offers a limited warranty on all our recreational vehicles for 12 months from date of purchase against defects in materials or faulty workmanship. It applies to the original owner only and is available upon request for inspection. Individual manufacturer warranties apply to various other components we use.

**THREE (3) YEAR STRUCTURAL WARRANTY**  
The limited 3 year structural warranty provides a guarantee against all defects in materials or faulty workmanship for the steel frame and wood super-structure for 36 months from date of purchase. It applies to the original owner and is available upon request for inspection.



Travel Trailer Model 35FKSS\*



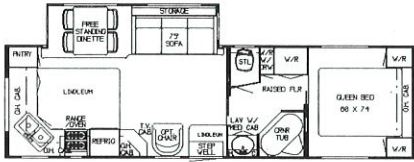
Travel Trailer Model 35FKSS with Rear Bedroom Slide-out\*

\*Shown with optional 3rd axle

# FIFTH WHEEL FLOOR PLANS

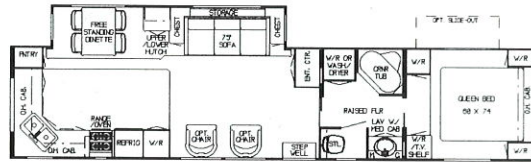
96

## 31RKSS



L=31'3" W=100" HT=11'4" GVWR=13,000 D/W=9990 A=8340 H=1650

## 40RKSS



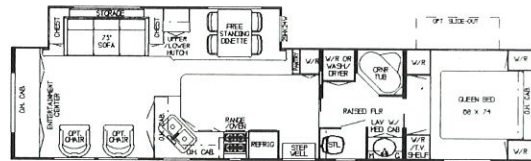
L=40" W=100" HT=11'4" GVWR=17,000 D/W=13,400 A=11,150 H=2250

## 31RKSSA



L=31'3" W=100" HT=11'4" GVWR=13,000 D/W=9990 A=8340 H=1650

## 40RLSS



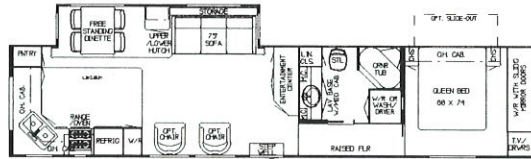
L=40" W=100" HT=11'4" GVWR=17,000 D/W=13,400 A=11,150 H=2250

## 33RKSS



L=34'2" W=100" HT=11'4" GVWR=14,000 D/W=10,700 A=8900 H=1800

## 40SBSS



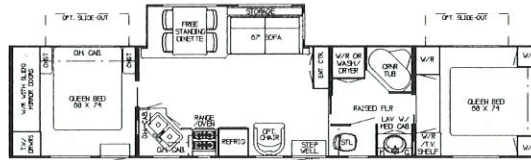
L=40" W=100" HT=11'4" GVWR=17,000 D/W=13,700 A=11,200 H=2500

## 33RLSS



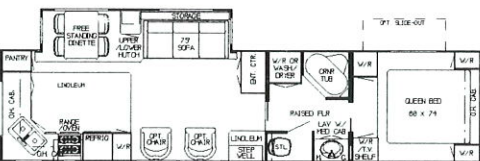
L=34'2" W=100" HT=11'4" GVWR=14,000 D/W=10,700 A=8900 H=1800

## 40DBSS



L=40'9" W=100" HT=11'4" GVWR=17,000 D/W=14,000 A=11,600 H=2400

## 36RKSS



L=36'10" W=100" HT=11'4" GVWR=16,500 D/W=12,250 A=10,250 H=2000

## 36RLTSO



L=36'10" W=100" HT=11'4" GVWR=16,500 D/W=13,250 A=11,050 H=2200

## 36RLSS



L=36'10" W=100" HT=11'4" GVWR=16,500 D/W=12,250 A=10,250 H=2000

## 40RLTSO

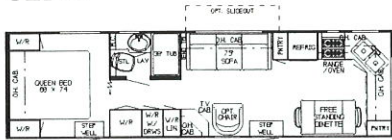


L=39'4" W=100" HT=11'4" GVWR=18,000 D/W=14,500 A=12,250 H=2250

L=LENGTH W=WIDTH HT=HEIGHT GVWR=GROSS VEHICLE WEIGHT RATING D/W=DRY WEIGHT A=AXLE H=HITCH  
SIZES AND WEIGHTS ARE APPROXIMATE AND HAVE BEEN CALCULATED AS ACCURATELY AS POSSIBLE

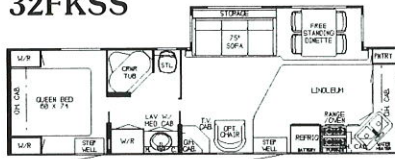
# TRAVEL TRAILER FLOOR PLANS

## 32FK



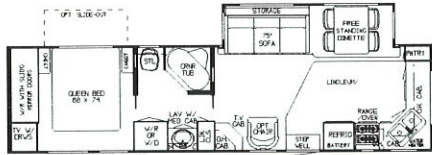
L=32'6" W=8" HT=10'4" GVWR=11,000 D/W=7250 A=6300 H=950

## 32FKSS



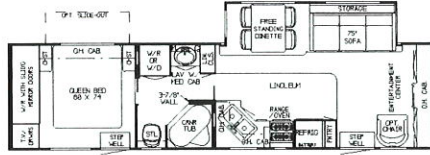
L=32'6" W=8" HT=10'4" GVWR=13,000 D/W=9250 A=8300 H=950

## 35FKSS



L=35'1" W=8" HT=10'4" GVWR=15,000 D/W=10,300 A=9000 H=1300

## 35FLSS

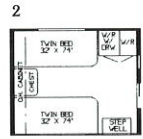


L=35'1" W=8" HT=10'4" GVWR=15,000 D/W=10,300 A=9000 H=1300

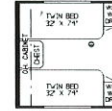
# TRAVEL TRAILER FLOOR PLAN OPTIONS



1  
OPTIONAL SLIDE-OUT  
35FKSS  
35FLSS

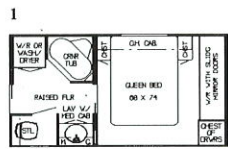


2  
OPTIONAL TWIN BEDS  
35FKSS  
35FLSS

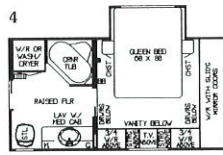


3  
OPTIONAL TWIN BEDS  
32FK  
32FKSS

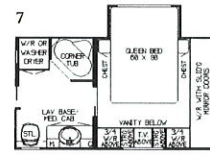
# FIFTH WHEELS FLOOR PLAN OPTIONS CABOVER AND BATH OPTIONS



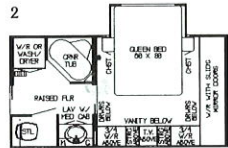
1  
36RLSS  
36RKSS  
40RKSS  
40RLSS  
40DBSS



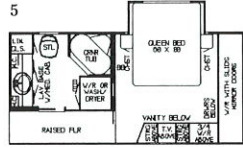
4  
36RLSS  
36RKSS  
40RKSS  
40RLSS  
40DBSS



7  
33RKSS  
33RLSS



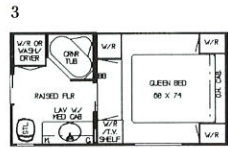
2  
36RLSS  
36RKSS  
40RKSS  
40RLSS  
40DBSS



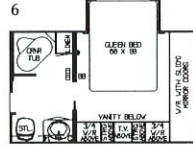
5  
40BSS



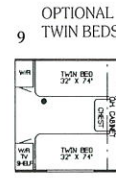
8  
33RKSS  
33RLSS



3  
36RLSS  
36RKSS  
40RKSS  
40RLSS  
40DBSS



6  
31RKSSA



9  
OPTIONAL TWIN BEDS

# STANDARD ITEMS

- 100" Wide Body
- 8" Tube Frame (Double Tube 3/16 Steel w/Super Slides)
- 6000 Lb. Heavy Duty Axles (12" Brakes) w/Shock Absorbers
- 2x2 Wood Framing (Glued and Screwed)
- Truss Roof Rafters
- 3/8" Fur Plywood Deck (Complete Roof)
- EPDM Rubber Roof
- Totally Enclosed Metal Underbelly
- Insulated and Heated Holding Tanks
- Polar Pack Insulation (R26) in Underbelly
- Polar Pack Insulation (R19) in Roof, Front and Back
- Polar Pack Insulation (R9) w/Foam Core on Side Walls
- Battery Box w/Access Door

- Basement Storage w/Carpeting
- Stand-up Bedroom
- Fiberglass Exterior w/Smooth Radius Corners
- 30" Entrance Door w/Dead Bolt Lock
- Glass Lighted Grab Handle
- Triple Step with Light
- 30 Lb. LP Gas Bottles
- 10 Gal. Gas Electric Water Heater w/By-Pass Kit
- 40,000 BTU Furnace
- 682 Norcold Double Door Refrigerator w/Flush Doors
- 22" Magic Chef Oven w/Piezo Lighter
- AM/FM Stereo w/Cassette Player and Four Speakers
- TV Antenna w/Power Booster
- Cable Hook Up and 2 TV Jacks

- Monitor System
- Telephone Hook-up and 2 Jacks
- 50 Amp Converter
- Thermoil Heavy Duty Battery
- 12 Volt Roof Vent in Bath
- Wardrobe Lights
- Hehr Radius Torque Windows
- Chrome Bumper Cover
- 55 Gal. Fresh Water Tank
- 55 Gal. Sewage Tank
- 55 Gal. Grey Water Tank
- Queen Size Bed w/Lifters
- Solid Oak Raised Panel Doors
- Soft Touch Ceiling
- Deluxe Garden Tub (Most Models)
- Linoleum in Kitchen

- Carpet (DuPont Teflon®)
- Lined Drapery in Living Room
- Queen Size Pillow Top Mattress
- Fire Extinguisher
- Smoke Detector
- Hitch Light
- 16" Goodyear Radial Tires Load Range "E"
- 12 Volt Power Jack for Hitch
- 2 B.A.L. Stabilizer Jacks (4 on Travel Trailers)
- Ladder/Roof Rack
- Bread Board w/Cutlery Drawer
- Molded One Piece Fiberglass Front and Rear End Cap
- Rain Gutter Rail
- 3rd axle on 36' and 40' Fifth Wheels
- 3rd axle on 35' Travel Trailers

# OPTIONAL ITEMS

- Ducted Central Air 13.5
- Standard Air 13.5
- Ducted Central Air 15,000
- DSI for 10 Gal. Gas Electric Water Heater
- LP Bottles 40 Lb. ILO 30 Lb.
- Microwave Oven (Sharp Carousel)
- Microwave Convection Oven (Sharp)
- Norcold Refrigerator 982 w/Ice Maker ILO Std.
- 4872 Dometic Refer ILO Std.
- 7732 Dometic Side by Side Refrigerator ILO Std.
- Washer and Dryer Sears 2 Pc.
- Washer and Dryer Prep.
- Dishwasher (Sears)
- Ice Maker (U-Line)
- Slide-Out Pantry
- Continental Sofa
- Hide-A-Bed Sofa

- Flexsteel Glider Chair
- Hi-Lo Table Walnut
- Hi-Lo Table Oak
- Twin Bed ILO Std. Queen
- Dlx. Bed Spread and Shams
- Bi-Fold Range Cover
- Corian® Counter Tops
- Fantastic Fan w/Rain Sensor
- Ceiling Fan
- Door Bell
- Skylight w/Soft Shade
- Tinted Safety Windows (Ea.)
- Storm Windows (Ea.)
- Exterior Security Lights
- Parquet Floor in Kitchen and Foyer
- Planking Floor in Kitchen and Foyer
- Water Purifier w/Faucet at Kitchen Sink

- Porcelain Stool w/Sprayer
- Hand Sprayer at Kitchen Sink
- Rear Awning
- Side Awning (8500 A & E)
- Side Awning (9000 A & E)
- Center Support-Tension Rafter
- Window Awning (8500 A & E)
- Window Awning (9000 A & E)
- 16" Spare Tire (Radial)
- Spare Tire Carrier
- Continental Tire Cover
- Sewage Tank Rinse
- Extra Thermoil Heavy Duty Battery
- Generator Prep.
- 6" Cabover Raise
- Automotive Rear Bumper
- Fluorescent Lights ILO Std. (Ea.)

- Indirect Lighting (Ea.)
- Day Night Shades (Ea.)
- Oak Hardwood Package
- Bleached Oak Hardwood Package
- Walnut Hardwood Package
- 50 Amp Service ILO 30 Amp
- Power Slide-Out Room
- Built-in Entertainment Center (RL Model)
- Electronic Entertainment Center
- Cabover Wall Feature
- Dlx. Bedroom Feature in Cabover
- Mor/Ryde Suspension Tandem Axles
- Mor/Ryde Suspension Triple Axles
- Carpet in Kitchen (Per Ft.)
- Ceramic Tile in Bath
- 3 3/8" Brake Axles ILO Std.



# Travel Supreme

FIFTH WHEELS & TRAVEL TRAILERS



P.O. Box 610 • 66149 State Road 19 • Wakarusa, IN 46573  
(219) 862-4484 • Fax (219) 862-2065

*Your Dealer:*

**R & D CAMPERLAND, INC.**

4650 S. Broadway

Wichita, Kansas 67216

1-316-522-5474

1-316-522-4808