



1996
SPORTSMASTER

*Escape into
Creation's Calm*

"51 YEARS OF INNOVATION"

It's not just a trite phrase but a standard of excellence for KIT Manufacturing Company. From two camping trailers a week in 1945 to a dominant position as one of the nation's top producers of manufactured housing and recreational vehicles, KIT Manufacturing Company celebrates 51 years in this phenomenal success story.

Founded in 1945, KIT Manufacturing Company introduced its first trailer, the teardrop, to a post-war public that was eager to travel. Customers ordered through a catalog and received the pre-fabricated, two-wheel trailer ready to assemble in a "kit," thus inspiring the company's name.

These small trailers offered such innovative luxuries as innerspring mattresses, cooktops, fresh-water tanks, and an all-aluminum kitchen with butane stove and ice box. The popularity of KIT recreational vehicles created a demand for larger, fully-assembled models. Before long, recreational vehicles were being shipped all over the United States, by rail and even by ship through the Panama Canal.



In its "51st" year of continuous operation, KIT is one of the oldest and most established companies in the industry. Quality, reliability and attention to detail have been a consistent source of pride for 51 years.



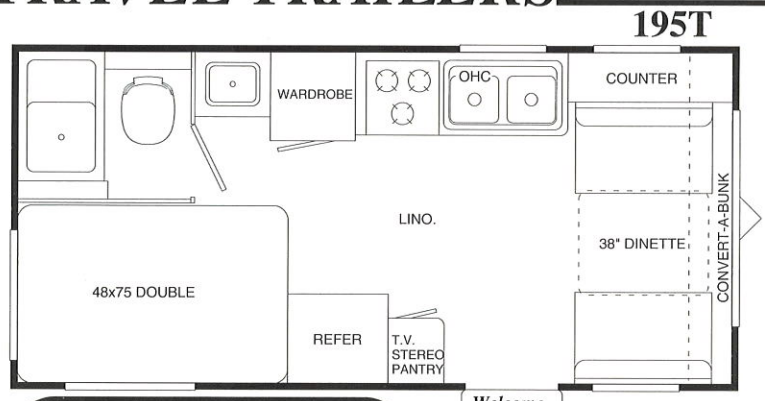
- Model 249T – Front Galley
- Extra Countertop/Work Space
- Overhead Cabinetry for Lots of Storage!
- Eye Level Microwave for **EXTRA COUNTER SPACE!**



SPORTSMASTER TRAVEL TRAILERS



- Controls for Direct Spark Ignition
110V/LP Gas Water Heater
- Oak Knife Holder and Spice Rack at Range Top



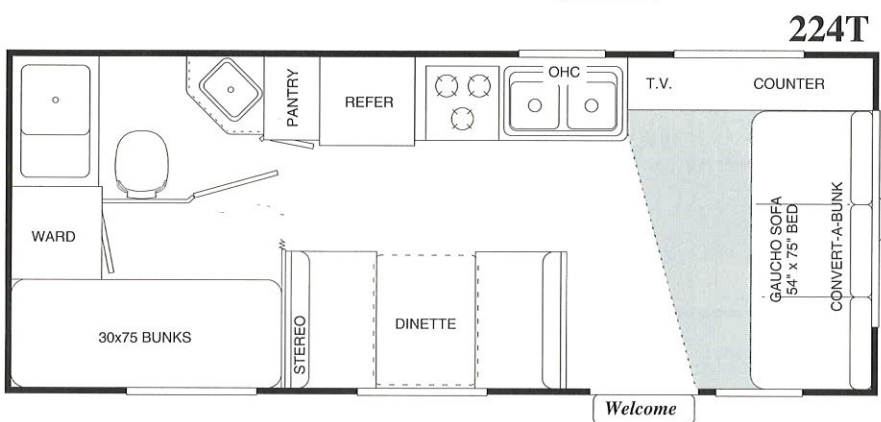
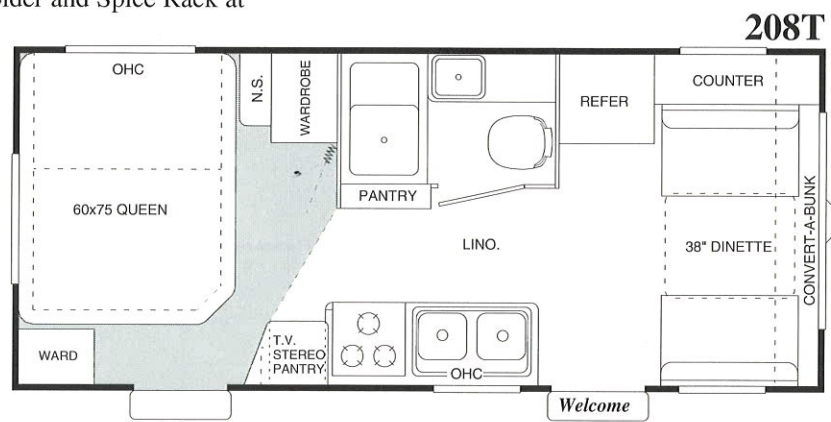
195T SPECIFICATIONS

Overall Length	19' 11"
Gross Dry Weight	3076 lbs.
Dry Hitch Weight	580 lbs.
Payload (Before Options)	3104 lbs.
Fresh Water	38 gal.
Gray Water	31 gal.
Black Water	35 gal.

208T SPECIFICATIONS

Overall Length	21' 11"
Gross Dry Weight	3480* lbs.
Dry Hitch Weight	445* lbs.
Payload (Before Options)	2860* lbs.
Fresh Water	38 gal.
Gray Water	31 gal.
Black Water	38 gal.

*est. weights



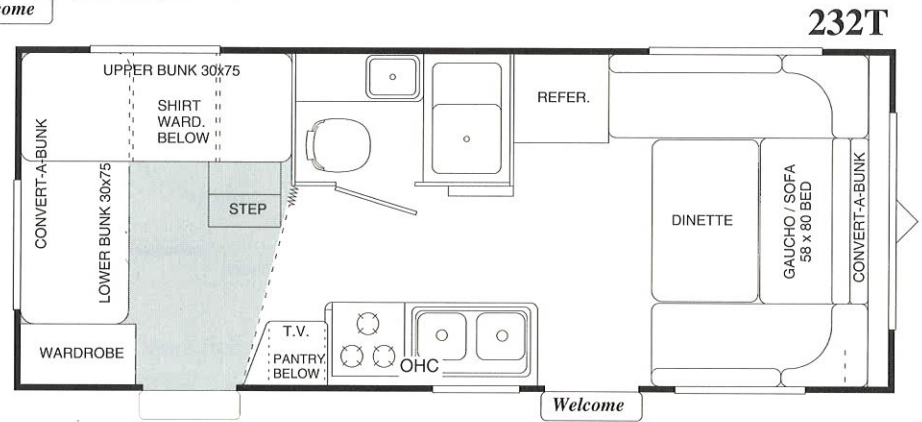
224T SPECIFICATIONS

Overall Length	23' 4"
Gross Dry Weight	3585 lbs.
Dry Hitch Weight	541 lbs.
Payload (Before Options)	3796 lbs.
Fresh Water	38 gal.
Gray Water	38 gal.
Black Water	38 gal.



232T SPECIFICATIONS

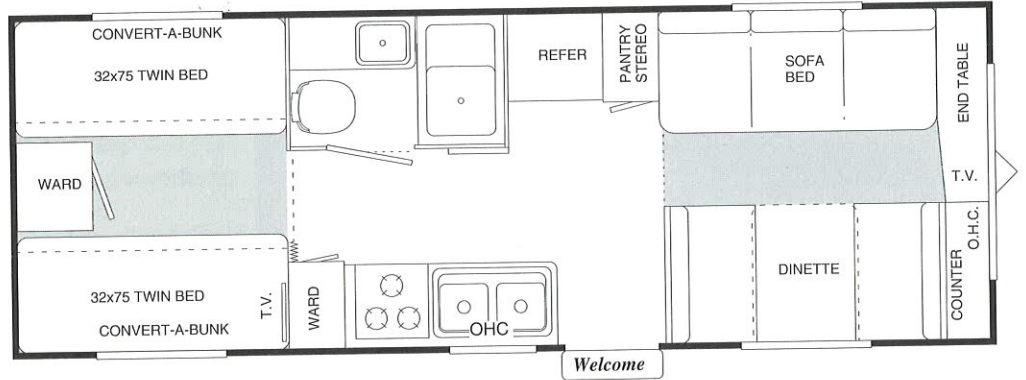
Overall Length	23' 7"
Gross Dry Weight	4360 lbs.
Dry Hitch Weight	460 lbs.
Payload (Before Options)	2940 lbs.
Fresh Water	38 gal.
Gray Water	31 gal.
Black Water	32 gal.



248T

248T SPECIFICATIONS

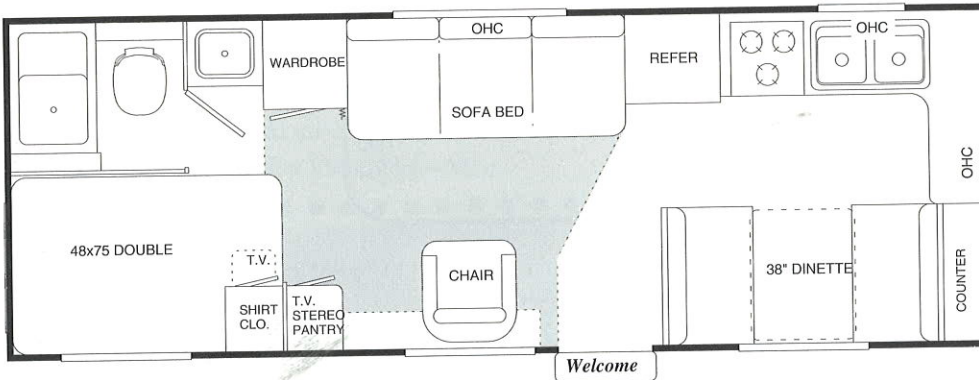
Overall Length	25' 11"
Gross Dry Weight	4660 lbs.
Dry Hitch Weight	580 lbs.
Payload (Before Options)	2760 lbs.
Fresh Water	38 gal.
Gray Water	25 gal.
Black Water	35 gal.



249T

249T SPECIFICATIONS

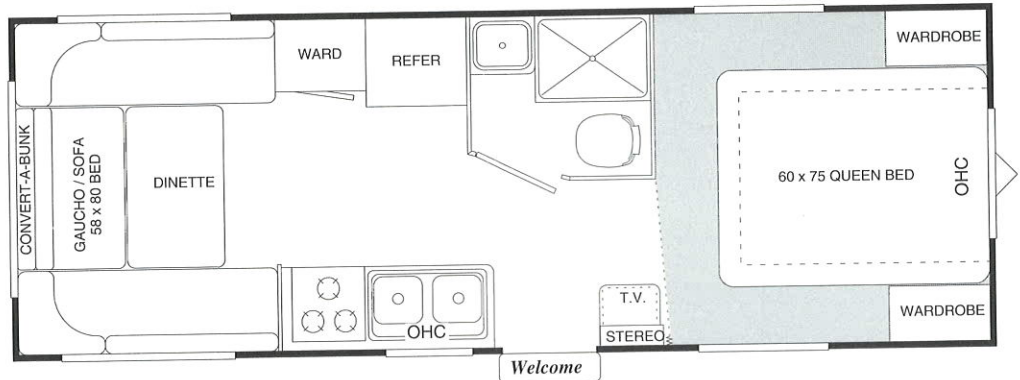
Overall Length	25' 11"
Gross Dry Weight	4455 lbs.
Dry Hitch Weight	651 lbs.
Payload (Before Options)	3036 lbs.
Fresh Water	38 gal.
Gray Water	31 gal.
Black Water	38 gal.



251T

251T SPECIFICATIONS

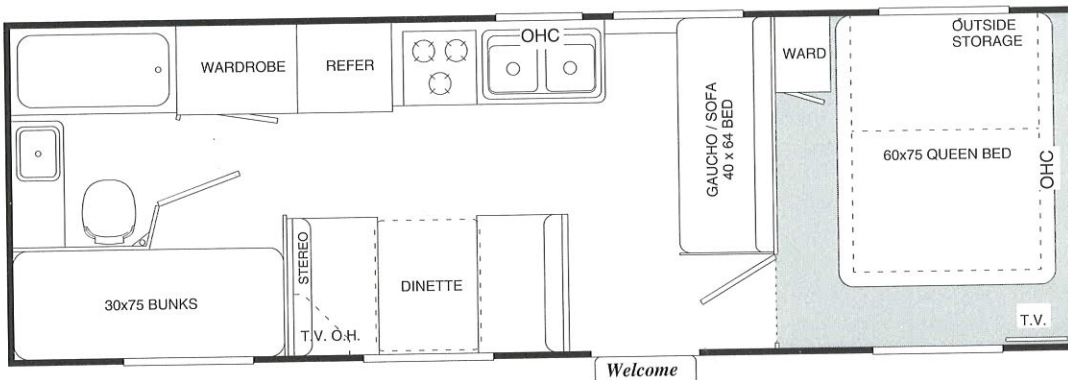
Overall Length	25' 11"
Gross Dry Weight	4360 lbs.
Dry Hitch Weight	650 lbs.
Payload (Before Options)	3140 lbs.
Fresh Water	38 gal.
Gray Water	38 gal.
Black Water	38 gal.



266T

266T SPECIFICATIONS

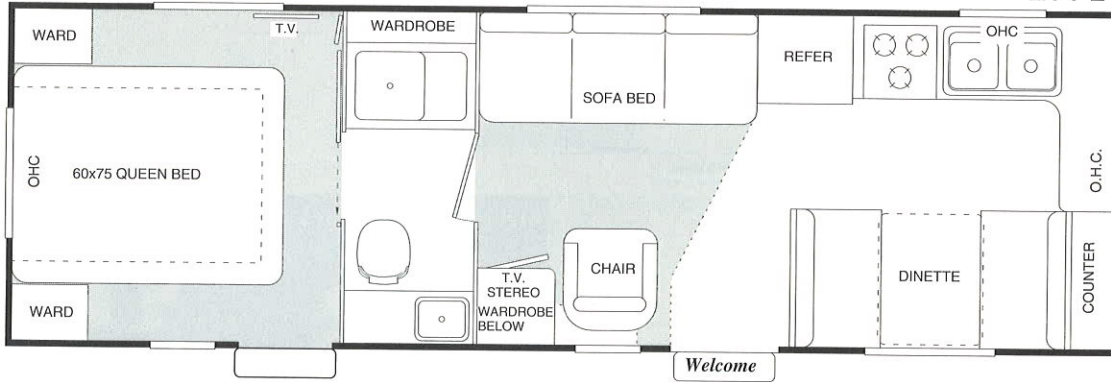
Overall Length	27' 11"
Gross Dry Weight	4620 lbs.
Dry Hitch Weight	580 lbs.
Payload (Before Options)	2960 lbs.
Fresh Water	38 gal.
Gray Water	38 gal.
Black Water	38 gal.





SPORTSMASTER TRAVEL TRAILERS

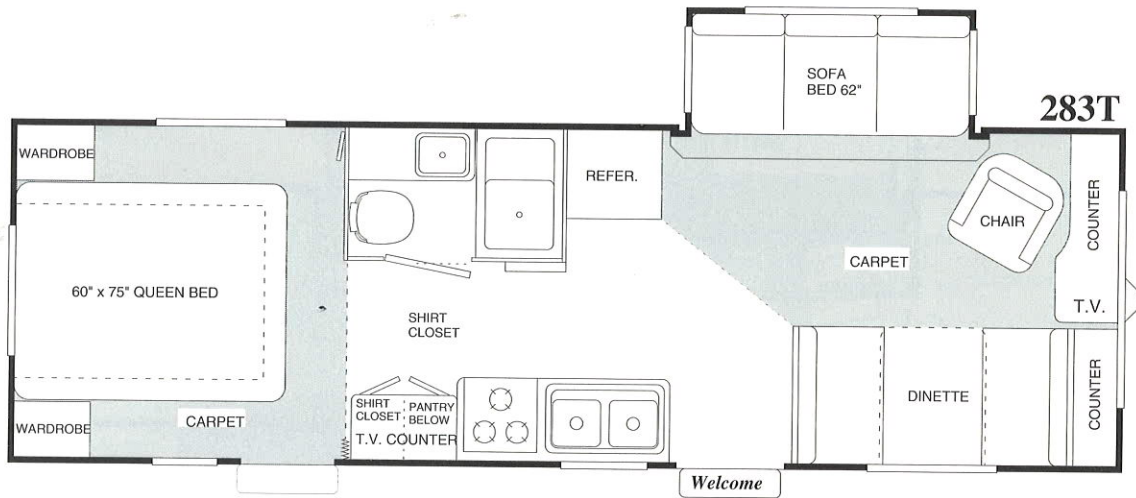
277T



277T SPECIFICATIONS

Overall Length	28' 11"
Gross Dry Weight	4900 lbs.
Dry Hitch Weight	500 lbs.
Payload (Before Options)	2600 lbs.
Fresh Water	38 gal.
Gray Water	31 gal.
Black Water	32 gal.

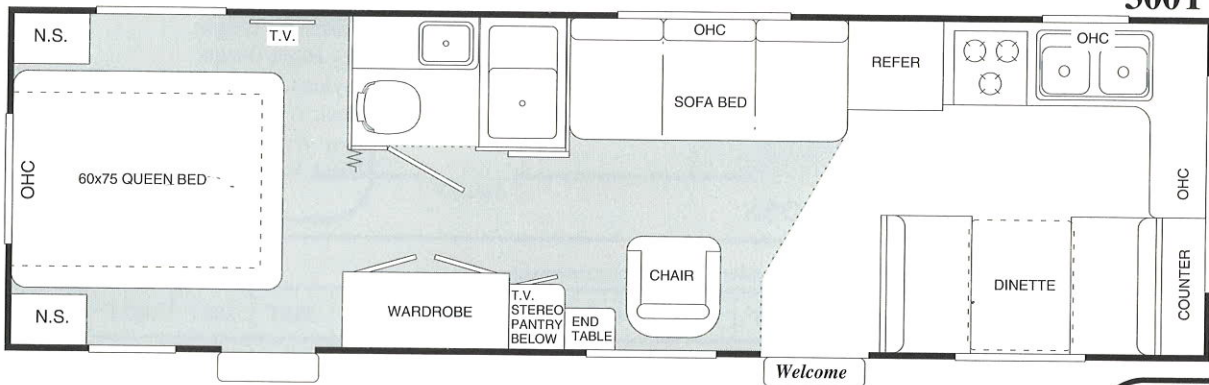
283T



283T SPECIFICATIONS

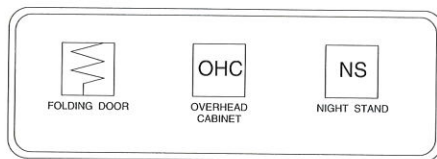
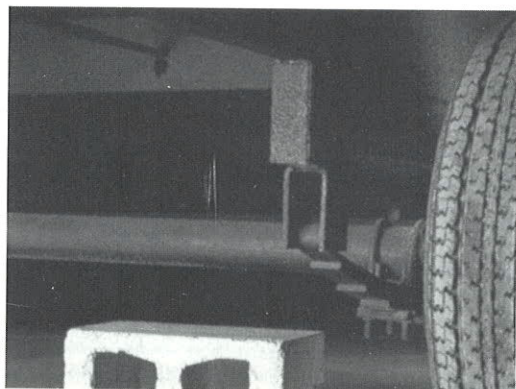
Overall Length	28' 11"
Gross Dry Weight	5440 lbs.
Dry Hitch Weight	720 lbs.
Payload (Before Options)	2120 lbs.
Fresh Water	38 gal.
Gray Water	31 gal.
Black Water	32 gal.

300T



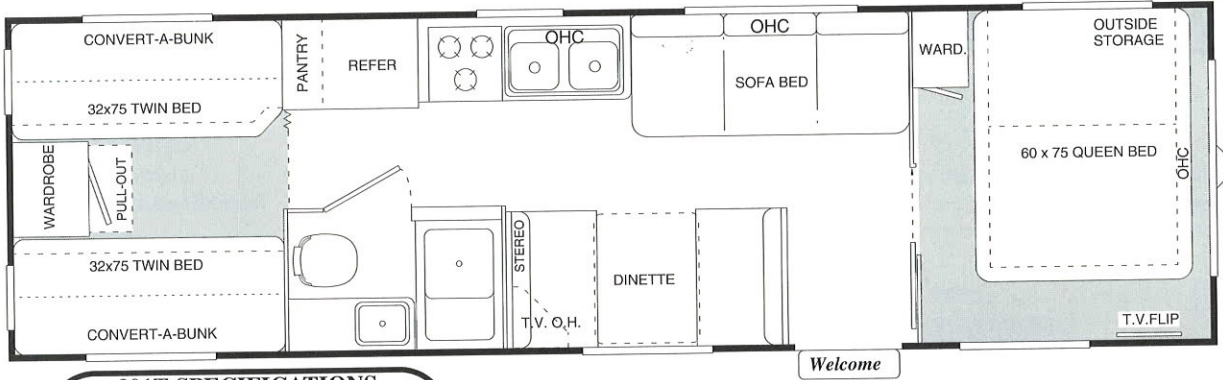
300T SPECIFICATIONS

Overall Length	30' 11"
Gross Dry Weight	5190 lbs.
Dry Hitch Weight	927 lbs.
Payload (Before Options)	2737 lbs.
Fresh Water	38 gal.
Gray Water	31 gal.
Black Water	32 gal.

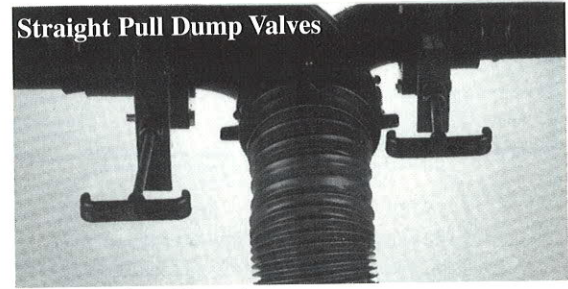


- Straight Axles with Steel Belted Radial Tires
- Higher Ground Clearance
- Heavier Rated Axles for Larger Payloads

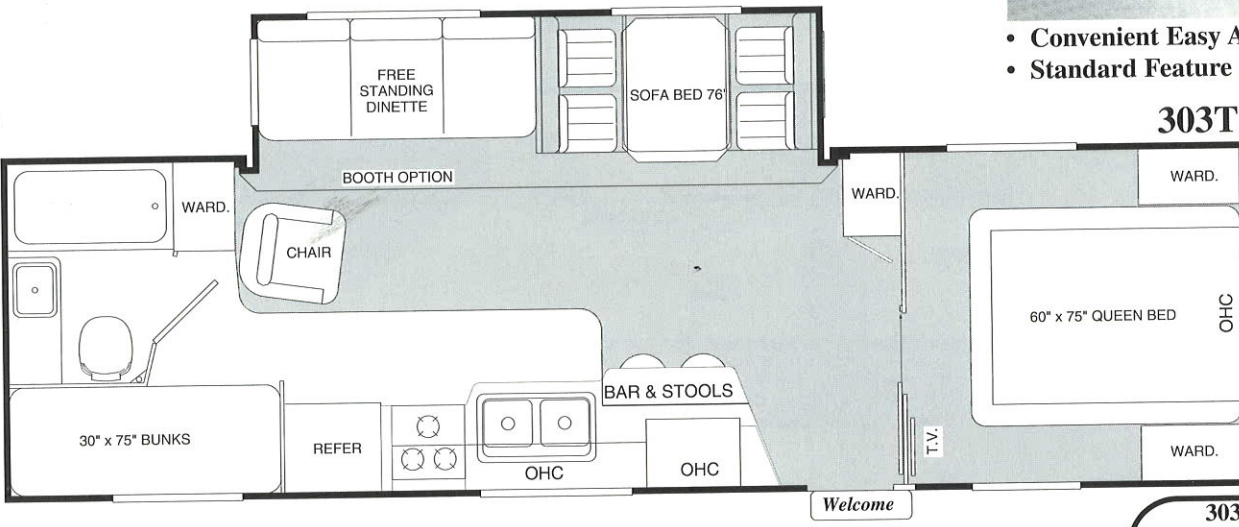
301T



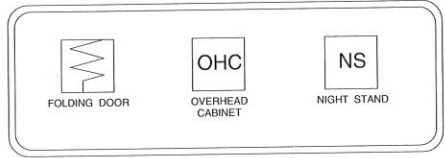
- 301T SPECIFICATIONS**
- Overall Length 31' 2"
 - Gross Dry Weight 5320 lbs.
 - Dry Hitch Weight 820 lbs.
 - Payload (Before Options) 2340 lbs.
 - Fresh Water 38 gal.
 - Gray Water 31 gal.
 - Black Water 32 gal.



- Convenient Easy Access
- Standard Feature On All KIT RV's



303T



- 303T SPECIFICATIONS**
- Overall Length 31' 11"
 - Gross Dry Weight 7230* lbs.
 - Dry Hitch Weight 910* lbs.
 - Payload (Before Options) 2760* lbs.
 - Fresh Water 48 gal.
 - Gray Water 38 gal.
 - Black Water 38 gal.
- *est. Weights

SPORTSMASTER TRAVEL TRAILER SPECIFICATIONS

SPECIFICATIONS	MODEL #													
	195T	208T	224T	232T	248T	249T	251T	266T	277T	283T	300T	301T	303T	305T
Sleeping Accommodations	5	5	7	6	8	6	5	7	6	6	6	10	6	4 to 6
Furnace w/ Electronic Ignition	16m	18m	25m	25m	25m	25m	25m	25m	25m	31m	31m	31m	31m	31m
Fresh Water System (Approx. Gal.)	38	38	38	38	38	38	38	38	38	38	38	38	48	38
Black Water Holding Tank (Approx. Gal.)	38	38	38	32	32	38	38	38	32	32	32	32	38	38
Gray Water Holding Tank (Approx. Gal.)	31	31	38	31	31	31	38	38	31	31	31	31	38	38/38
Tire Size	ST205/75R14	ST205/75R15	ST205/75R15	ST205/75R15	ST205/75R15	ST205/75R15	ST205/75R15	ST205/75R15	ST205/75R15	ST205/75R15	ST205/75R15	ST205/75R15	ST225/75R15	ST225/75R15
Load Range	C	C	C	C	C	C	C	C	C	C	C	C	D	D
Gross Dry Weight (Approx. Lbs.)	3076	*3480	3585	4360	4660	4455	4360	4620	4900	5440	5190	5320	*7230	7230
Dry Hitch Weight (Approx. Lbs.)	580	*445	541	460	580	651	660	580	500	720	927	820	*910	910
Gross Vehicle Weight Rating (Approx. Lbs.)	6180	*6340	7381	7300	7420	7491	7500	7580	7500	7560	7927	7660	*9990	9990
Cargo Capacity (Before Options)	3104	*2860	3796	2940	2760	3036	3140	2960	2600	2120	2737	2340	*2760	2760
Overall Length (Approx.)	19' 11"	21' 11"	23' 4"	23' 7"	25' 11"	25' 11"	25' 11"	27' 11"	28' 11"	28' 11"	30' 11"	31' 2"	31' 11"	32' 11"
Overall Width (Approx.)	8' 0"	8' 0"	8' 0"	8' 0"	8' 0"	8' 0"	8' 0"	8' 0"	8' 0"	8' 0"	8' 0"	8' 0"	8' 0"	8' 0"
Overall Height (Approx.)	9' 0"	9' 0"	9' 0"	9' 1"	9' 1"	9' 0"	9' 0"	9' 0"	9' 1"	9' 1"	9' 2"	9' 1"	9' 11"	9' 11"

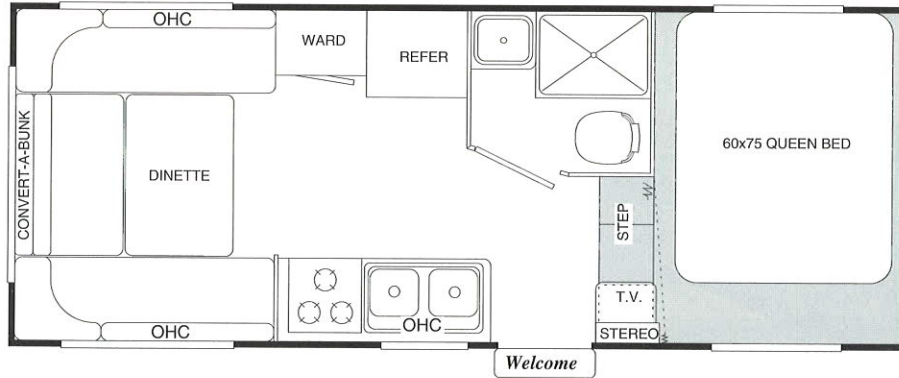
Shaded Areas Represent New Models

*Estimated Weights



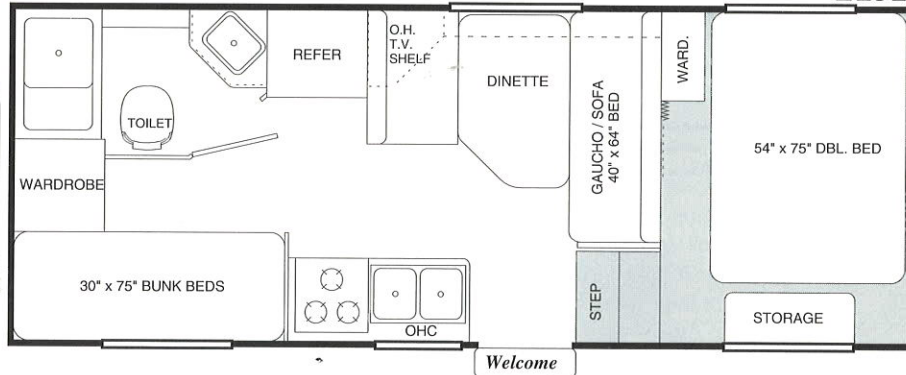
SPORTSMASTER FIFTH WHEELS

212F



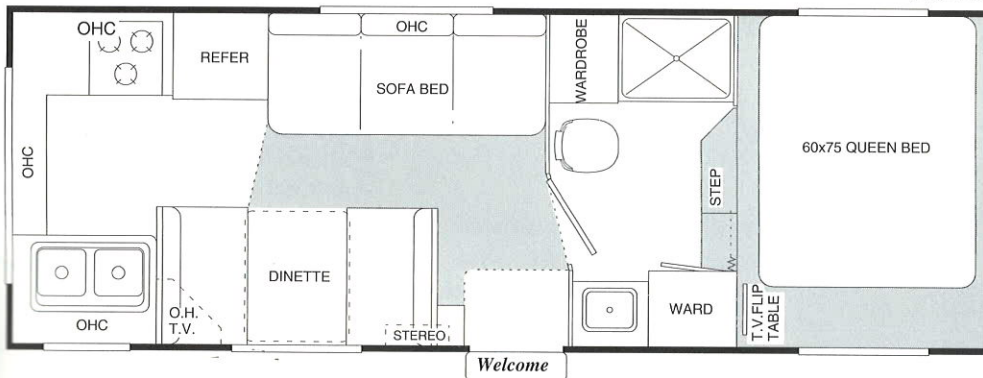
212F SPECIFICATIONS	
Overall Length	21' 10"
Gross Dry Weight	3743 lbs.
Dry Hitch Weight	852 lbs.
Payload (Before Options)	3949 lbs.
Fresh Water	38 gal.
Gray Water	38 gal.
Black Water	38 gal.

215F



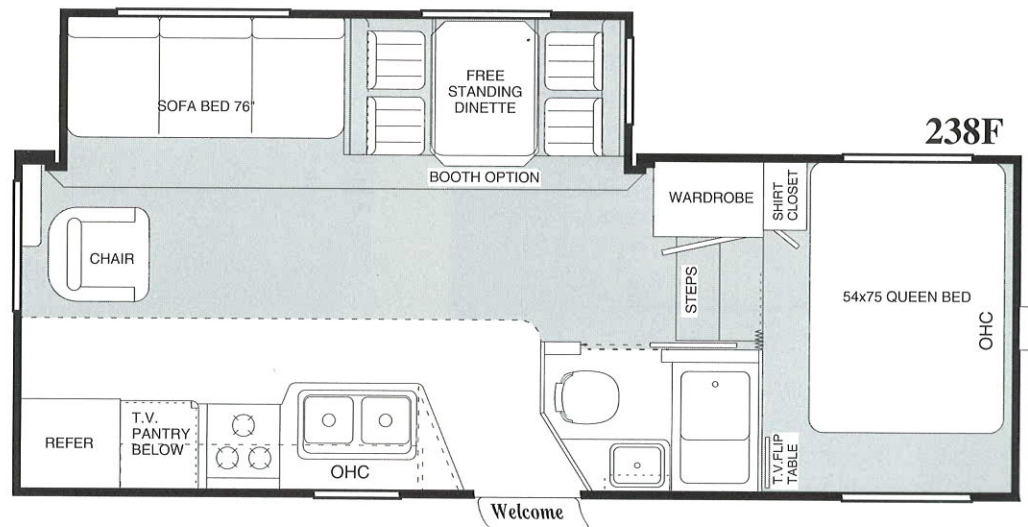
215F SPECIFICATIONS	
Overall Length	21' 11"
Gross Dry Weight	3878 lbs.
Dry Hitch Weight	720 lbs.
Payload (Before Options)	3682 lbs.
Fresh Water	38 gal.
Gray Water	31 gal.
Black Water	38 gal.

237F



237F SPECIFICATIONS	
Overall Length	23' 11"
Gross Dry Weight	4340 lbs.
Dry Hitch Weight	720 lbs.
Payload (Before Options)	3220 lbs.
Fresh Water	38 gal.
Gray Water	38 gal.
Black Water	38 gal.

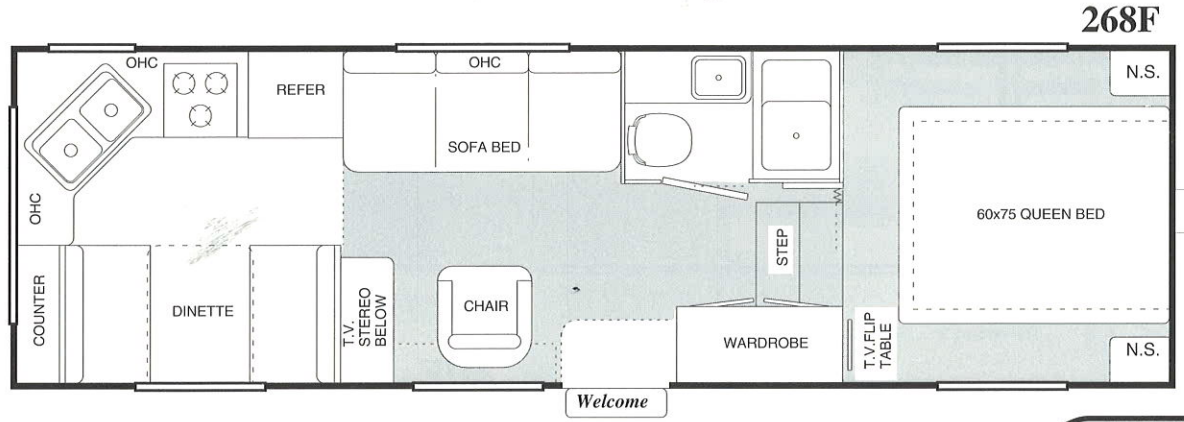
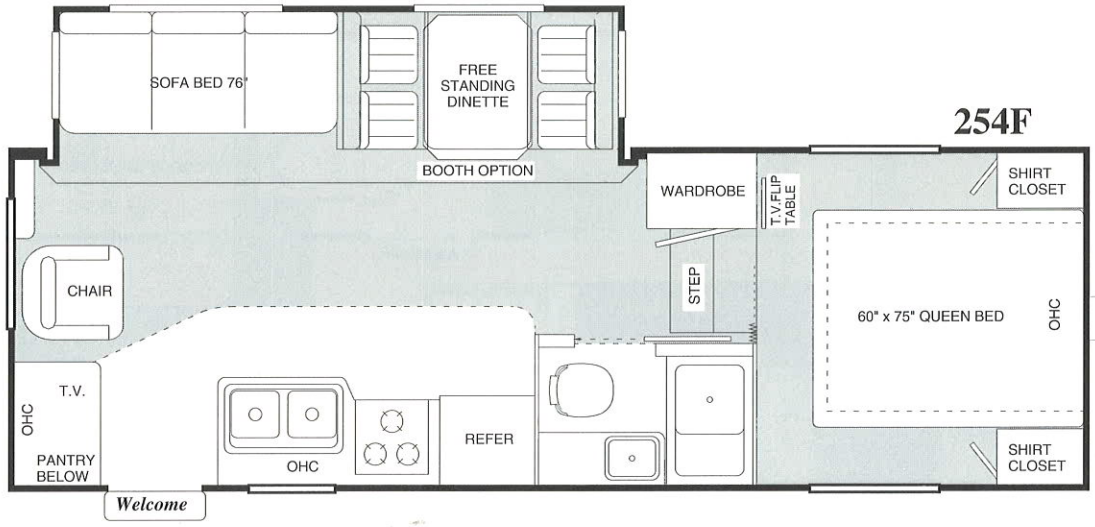
238F



238F SPECIFICATIONS	
Overall Length	24' 2"
Gross Dry Weight	6480 lbs.
Dry Hitch Weight	840 lbs.
Payload (Before Options)	2960 lbs.
Fresh Water	48 gal.
Gray Water	38 gal.
Black Water	38 gal.

254F SPECIFICATIONS

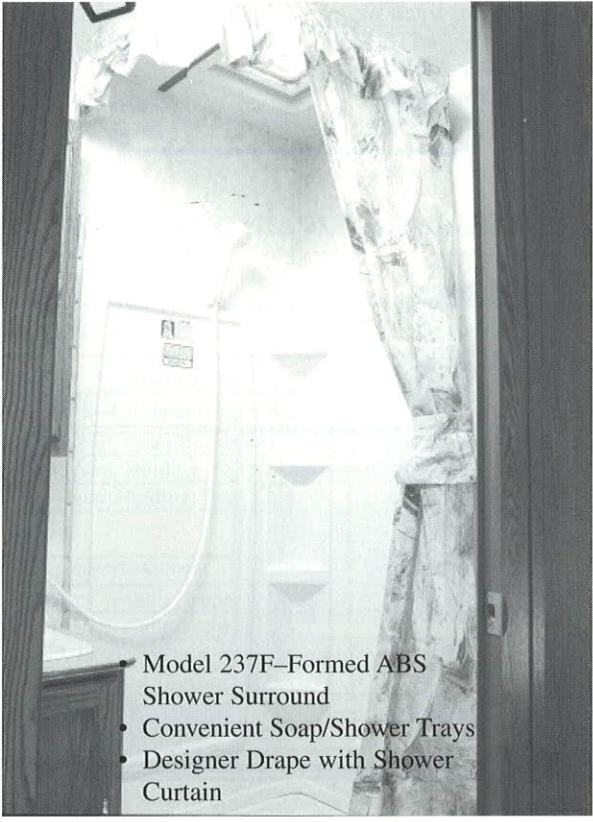
Overall Length	25' 11"
Gross Dry Weight	6520 lbs.
Dry Hitch Weight	820 lbs.
Payload (Before Options)	2900 lbs.
Fresh Water	48 gal.
Gray Water	38 gal.
Black Water	38 gal.



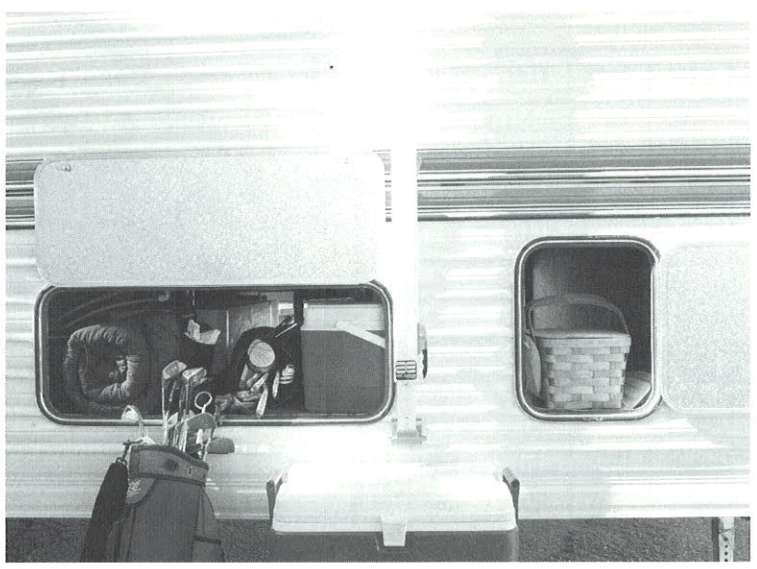
268F SPECIFICATIONS

Overall Length	27' 11"
Gross Dry Weight	5039 lbs.
Dry Hitch Weight	773 lbs.
Payload (Before Options)	2734 lbs.
Fresh Water	38 gal.
Gray Water	38 gal.
Black Water	38 gal.

- Compartmentalized Basement Storage with Large, Double-Door Access
- Radius Storage Doors for Added Strength and Resistance to Leaks
- Items Stay Separated & "In Their Place"
- Model 337F Shown

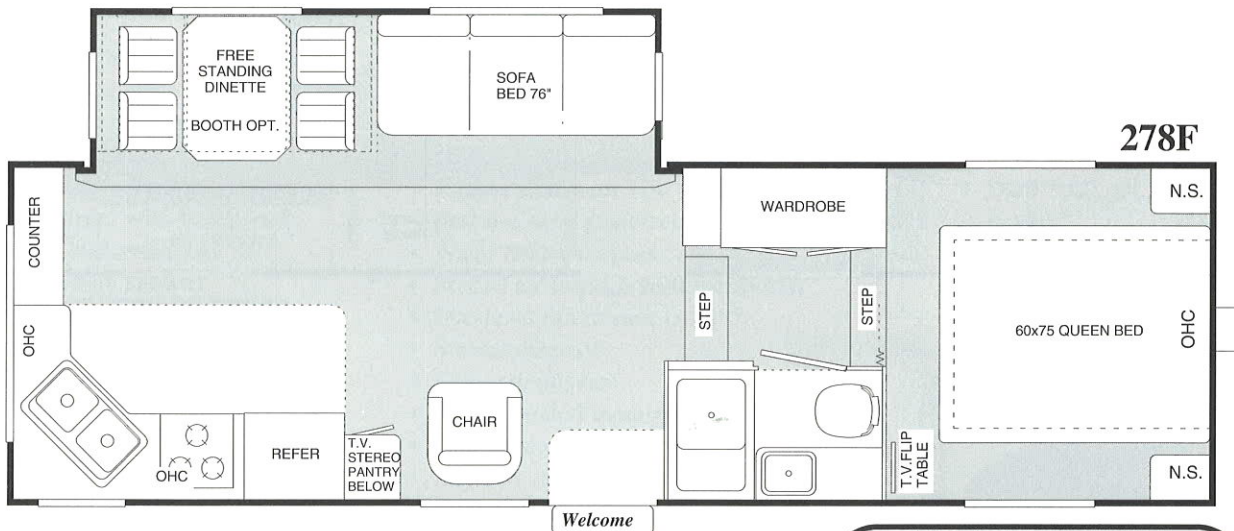


- Model 237F-Formed ABS Shower Surround
- Convenient Soap/Shower Trays
- Designer Drape with Shower Curtain



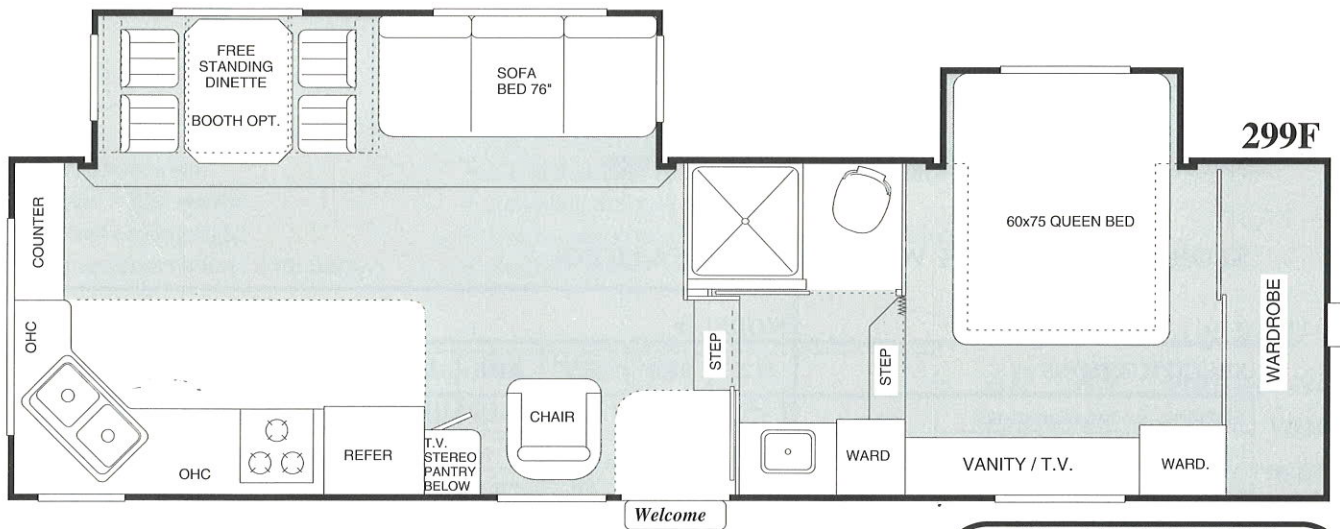


SPORTSMASTER FIFTH WHEELS



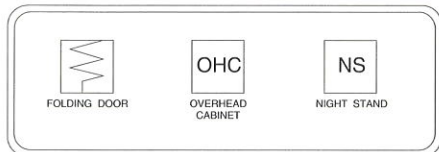
278F SPECIFICATIONS

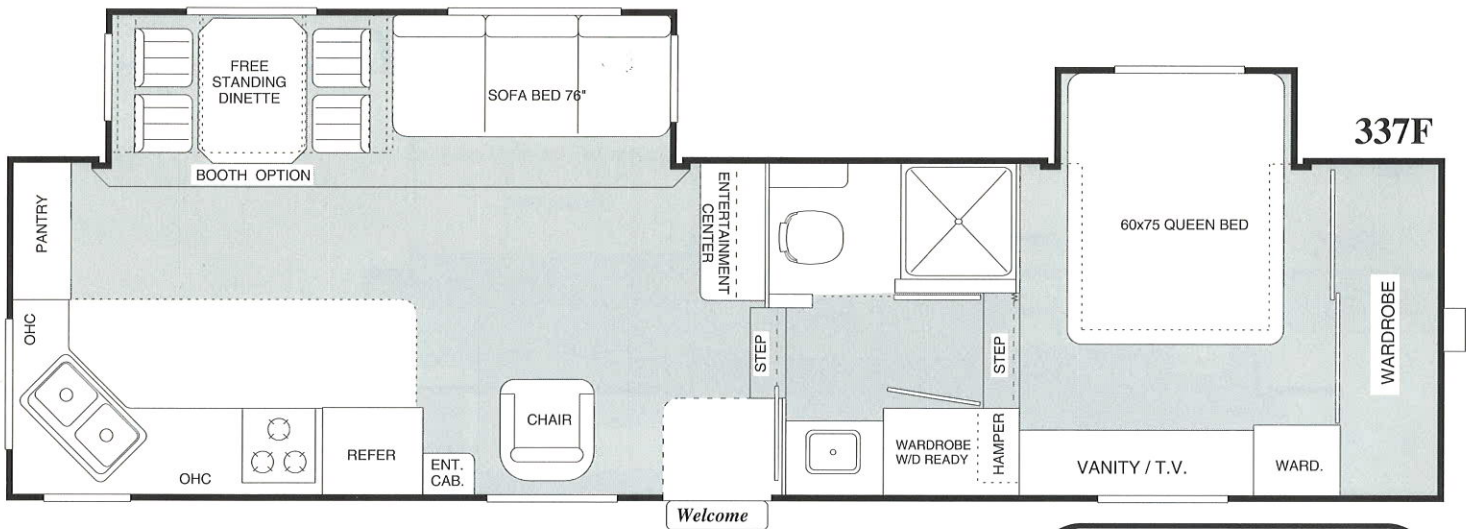
Overall Length	28' 11"
Gross Dry Weight	7060 lbs.
Dry Hitch Weight	1100 lbs.
Payload (Before Options)	3360 lbs.
Fresh Water	38 gal.
Gray Water	38/38 gal.
Black Water	38 gal.



299F SPECIFICATIONS

Overall Length	30' 11"
Gross Dry Weight	7880 lbs.
Dry Hitch Weight	1280 lbs.
Payload (Before Options)	2720 lbs.
Fresh Water	38 gal.
Gray Water	38/38 gal.
Black Water	38 gal.





337F

337F SPECIFICATIONS	
Overall Length	38' 8"
Gross Dry Weight	8460 lbs.
Dry Hitch Weight	1460 lbs.
Payload (Before Options)	5000 lbs.
Fresh Water	38 gal.
Gray Water	38/38 gal.
Black Water	38 gal.



- Four Way Automotive Style Slide Seal
- Wiper Cover Protects Bulb Seals
- Windows on Both Ends of Slide for Extra Lighting and View

SPORTSMASTER 5TH WHEEL SPECIFICATIONS

SPECIFICATIONS	MODEL #								
	212F	215F	237F	238F	254F	268F	278F	299F	337F
Sleeping Accommodations	5	6	6	4 to 6	4 to 6	6	4 to 6	4 to 6	4 to 6
Furnace w/ Electronic Ignition	16m	18m	25m	25m	25m	25m	31m	31m	31m
Fresh Water System (Approx. Gal.)	38	38	38	48	48	38	38	38	38
Black Water Holding Tank (Approx. Gal.)	38	38	38	38	38	38	38	38	38
Gray Water Holding Tank (Approx. Gal.)	38	31	38	38	38	38	38/38	38/38	38/38
Tire Size	ST205/75R25	ST205/75R25	ST205/75R25	ST225/75R15	ST225/75R15	ST205/75R25	ST225/75R15	ST225/75R15	LT235/85R15
Load Range	C	C	C	C	C	C	D	D	E
Gross Dry Weight (Approx. Lbs.)	3743	3878	4340	6480	6520	5039	7060	7880	8460
Dry Hitch Weight (Approx. Lbs.)	852	720	720	840	820	773	1100	1280	1460
Gross Vehicle Weight Rating (Approx. Lbs.)	7692	7560	7560	9440	9420	7773	10420	10600	13460
Cargo Capacity (Before Options)	3949	3682	3220	2960	2900	2734	3360	2720	5000
Overall Length (Approx.)	21' 10"	21' 11"	23' 11"	24' 2"	25' 11"	27' 11"	28' 11"	30' 11"	33' 8"
Overall Width (Approx.)	8' 0"	8' 0"	8' 0"	8' 0"	8' 0"	8' 0"	8' 0"	8' 0"	8' 0"
Overall Height (Approx.)	9' 2"	9' 2"	9' 2"	9' 11"	9' 11"	9' 2"	11' 7"	12' 0"	12' 1"

*Estimated Weights



SPORTSMASTER

STANDARD FEATURES

COMPARE SPORTSMASTER WITH THE COMPETITION!

INTERIOR FEATURES

- Decorator-styled valances with side arms and upholstery
- Roller shades throughout
- Carpet in living room and bedroom areas
- Innerspring mattress with bedspread
- Wainscot walls with chair rail
- Motion chair (where shown)
- Queen bed where applicable
- Bed lifts (island beds)
- Oak raised panel cabinet doors
- Decorative glass cabinet door inserts (select areas)
- TV ready in bedroom with shelf
- Roof vent in bedroom

GALLEY

- Large stainless steel sink
- Cutting board sink cover
- Built in knife rack
- Large overhead cabinets
- Raised panel refrigerator doors
- GFI protected 120V outlet

BATH

- Fresh-water flush toilet
- ABS tub/shower surround
- Designer drape with shower curtain
- 12V-powered roof vent
- GFI protected 120V outlet
- Wall-switched ceiling light
- Overhead medicine cabinet with mirror

APPLIANCE/EQUIPMENT

- Dometic® Double-door LP/electric refrigerator
- Three-burner range with high output front burner
- Range hood with 12V light and exhaust fan
- Fast recovery gas/electric DSI water heater
- Water heater by pass
- Forced air furnace with thermostat
- Eye-level microwave oven**
- Smoke detector
- Fire extinguisher
- Wall mounted monitor panel
- 13.5 air conditioning**
- AM/FM cassette stereo**
- Cable TV hook-up
- TV antenna**
- Converter with battery charger
- 30' power cord

CONSTRUCTION FEATURES

- Unit is full 8 feet wide
- R-7 insulation throughout
- Transverse 2" x 3" floor on 12" centers
- Weyerhaeuser Sturdi-Wood® floor decking with 10 year warranty
- Truss-style rafters/Composite 4" thick roof
- Ducted air conditioning with layered R-7 fiber glass insulation (ducting most models)
- Dicor® rubber roof with 12 year warranty
- Screened entry doors with window
- Flush-combo entry latch with dead bolt lock
- Straight axles

CONSTRUCTION FEATURES CONT.

- Retractable double step at each entry
- Retractable triple step at each entry on most slide models
- Dual 7 1/2 gal. LP gas bottles most models
- Single 10 gal. LP gas bottle 212F & 237F
- ABS LP bottle cover (trailers)
- Radius torque windows (most applications)
- Dual battery capability
- Radial tires with spoke wheels
- C-channel cambered chassis
- 12" I-beam chassis on slide fifth wheels and Models 303T & 305T
- Locking insulated radiused baggage doors
- 120V patio outlet
- A&E 8500 series awning**
- Wall-switched door side patio light
- Hitch light (trailers)
- Front rock guard (trailers)

**Items are optional on 195T, 208T, 224T, 232T, 212F & 215F

MANUFACTURED BY:

KIT MANUFACTURING COMPANY

DATE OF MANUFACTURE G.V.W.R.

G.A.W.R.:FRONT REAR ALL AXLES WITH

TIRES PSI COLD SINGLE

THIS VEHICLE CONFORMS TO ALL APPLICABLE FEDERAL MOTOR VEHICLE SAFETY

STANDARDS IN EFFECT ON THE DATE OF MANUFACTURE SHOWN ABOVE

VEHICLE I.D. NO.

VEHICLE TYPE: TRAILER MODEL

THE FOLLOWING GUIDLINE WEIGHTS ARE AVERAGE FOR THIS MODEL

AS STANDARD BUILT. WEIGHTS WILL VARY ACCORDING TO

OPTIONAL EQUIPMENT AND FEATURES INSTALLED OVER STANDARD.

GROSS DRY HITCH DRY PAYLOAD

KIT TELLS YOU MORE!

All RV manufacturers are required to give you a certain amount of information about your vehicle. At KIT, we tell you more! KIT gives you additional weight and payload information to make it easier to enjoy your new Sportsmaster Travel Trailer or Fifth Wheel. You will find this tag on the side of your new Sportsmaster.

← Compare Our PAYLOADS!!

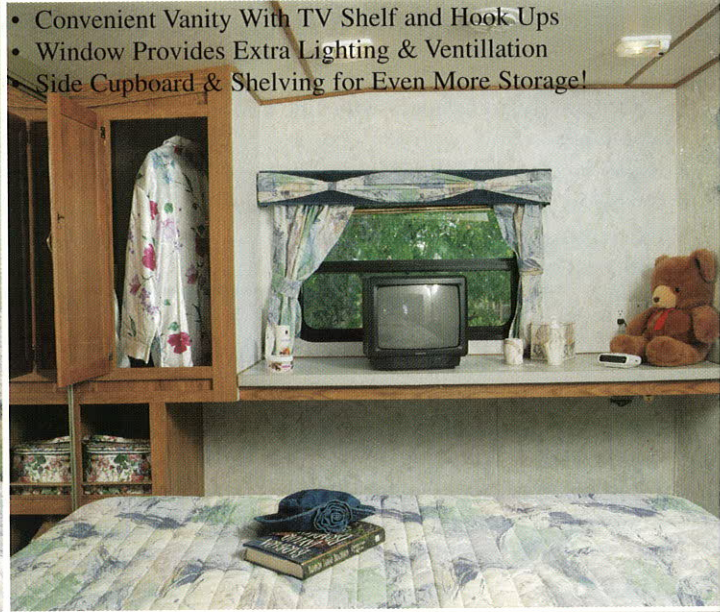


SPORTSMASTER

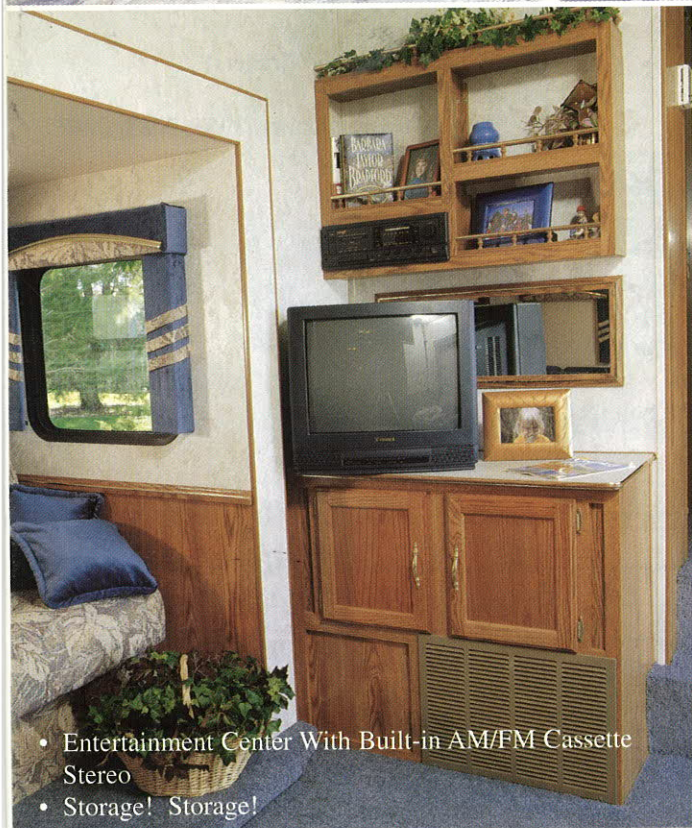
1945-1996 51 Years of Innovation



- Full 60" x 80" Queen Bed
- Bed-Side Shelf
- Huge, Floor-to-Ceiling Mirrored Wardrobe



- Convenient Vanity With TV Shelf and Hook-Ups
- Window Provides Extra Lighting & Ventilation
- Side Cupboard & Shelving for Even More Storage!



- Entertainment Center With Built-in AM/FM Cassette Stereo
- Storage! Storage!



- Spacious Kitchen and Dining Room
- Two Extra-Large Pantries
- Huge Counter/Work Space Area
- Eye-level Microwave

PICTURES DISPLAY SPORTSMASTER MODEL 337F

Manufacturer's Notice: All specifications, equipment and prices subject to change without notice. Production of all models subject to seasonal scheduling. KIT Manufacturing Company reserves the right to improve models without incorporating these changes in similar models produced at an earlier date.

Consult your automobile dealer and your recreational vehicle dealer to assure the proper match between tow vehicle and trailer. Tow vehicle and recreational unit must be properly equalized for efficient product performance and safety. Before you purchase your recreational vehicle, carefully consider the number of people it will accommodate and its end use. Manufacturer's load capacity restrictions and recommendations must be followed for safe and efficient product performance.



KIT Manufacturing Company
P.O. Box 586, McPherson, KS 67460
(316) 241-4320

JERRY'S TRAILERS & CAMPER'S
2601 S. 13th St.
Norfolk, NE 68701

YOUR AUTHORIZED KIT DEALER