

**1996
FLOOR
PLANS**

Nomad[®]

Limited

**TRAVEL
TRAILERS**



**FIFTH
WHEELS**

**INCLUDES
LIGHTWEIGHT
TRAVEL TRAILERS
& FIFTH WHEELS**



THE OVERALL LENGTH MEASUREMENT FOR EACH MODEL IS SHOWN ON THE SPECIFICATION CHARTS.

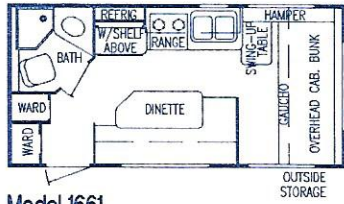


SKYLINE

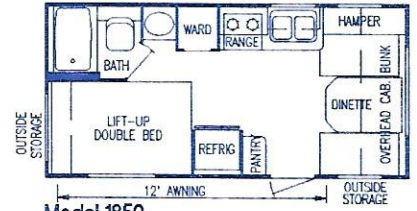
BRINGING AMERICA HOME. BRINGING AMERICA FUN.

**EFFECTIVE
JULY 1995**

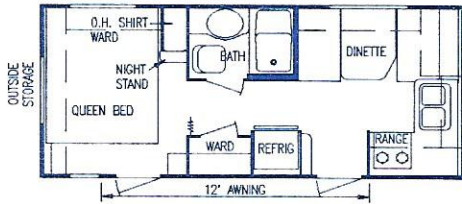
1996 NOMAD® LIMITED TRAVEL TRAILERS



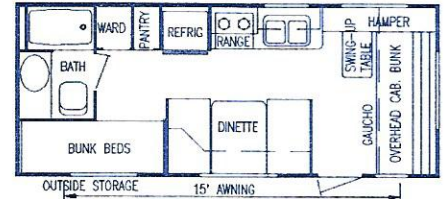
Model 1661



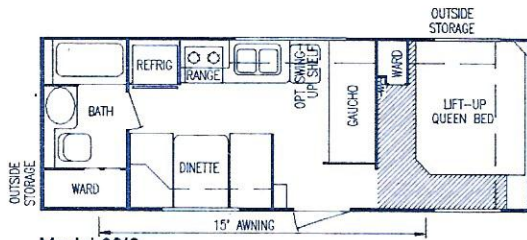
Model 1850



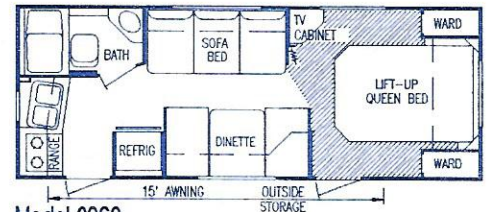
Model 2080



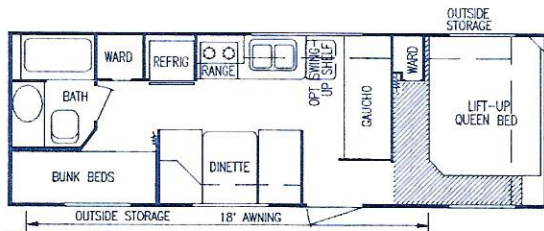
Model 2180



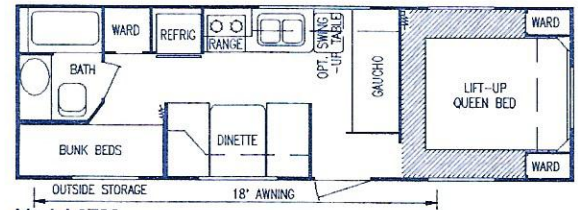
Model 2210



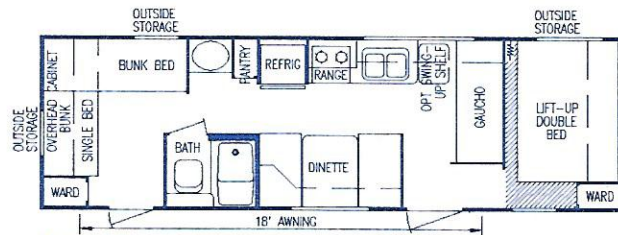
Model 2360



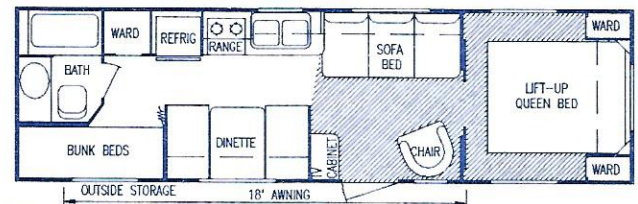
Model 2610



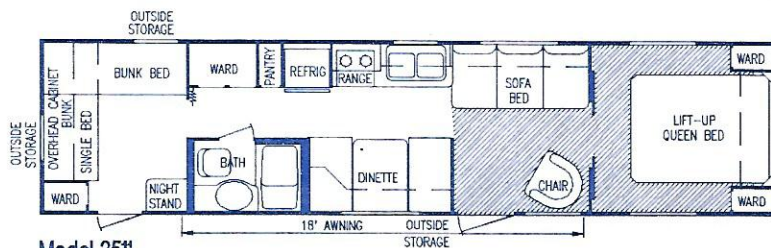
Model 2730



Model 2790

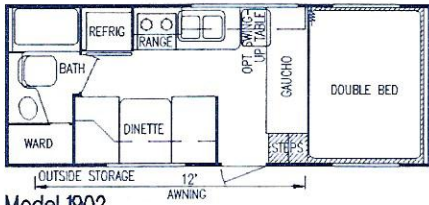


Model 3010

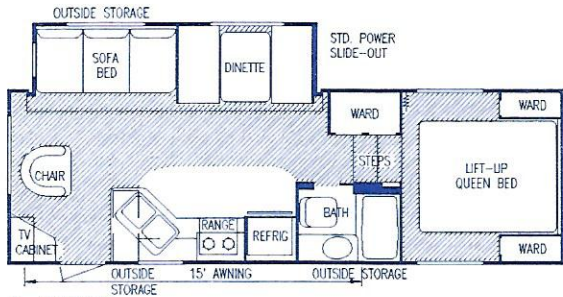


Model 3511

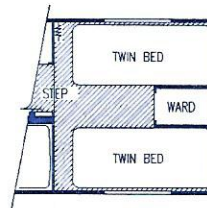
1996 NOMAD® LIMITED FIFTH WHEELS



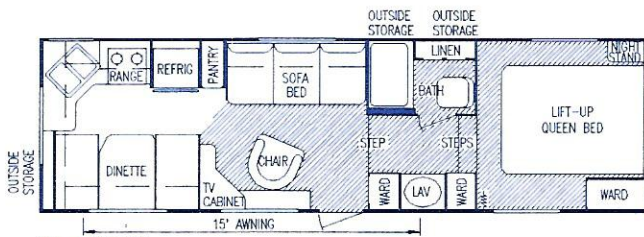
Model 1902



Model 2455



Option Twin Beds
(Model 2455)



Model 2725



1996 NOMAD® LIMITED

TRAVEL TRAILERS

Specification Chart

TRAVEL TRAILERS	1661	1850	2080	2180	2210	2360	2610	2730	2790	3010	3511
Sleeping Accomodations	5	5	4	7	6	6	8	8	9	8	9
Converter w/Battery Charger (AMPS)	32	32	32	32	32	32	32	32	32	45	45
LP Gas Bottles (No./Lbs.)	2/30	2/30	2/30	2/30	2/30	2/30	2/30	2/30	2/30	2/30	2/30
Fresh Water System (Gal.)	36	46	46	46	45	45	46	46	46	46	46
Gray Water Holding Tank (Gal.)	40	40	40	40	40	40	40	40	40	40	40
Black Water Holding Tank (Gal.)	40	40	40	40	40	40	40	40	40	40	40
Fast Recovery Water Heater (Gal.)	6 (Gas)	6 (Gas)	6 (Gas)	6 (Gas)	6 (Gas)	6 (Gas)	6 (Gas)	6 (Gas)	6 (Gas)	6 (Gas)	6 (Gas)
Furnace w/Electronic Ignition (B.T.U.s)	17M	17M	25M	25M	25M	25M	25M	25M	25M	25M	31M
Large Dometic Refrigerator	sgl/door	dbl/door	dbl/door	dbl/door	dbl/door	dbl/door	dbl/door	dbl/door	dbl/door	dbl/door	dbl/door
Axles	2	2	2	2	2	2	2	2	2	2	2
Tires, Blackwall (Radial)	ST205/75-14B	ST205/75-14B	ST205/75-14B	ST205/75-14B	ST205/75-14B	ST205/75-14B	ST225/75-15C	ST225/75-15C	ST225/75-15C	ST225/75-15C	ST225/75-15C
Dry Hitch Weight (Approx.)	425	450	375	550	475	550	500	800	700	600	725
Dry Axle Weight (Approx.)	2900	3325	3600	3500	3950	3725	4225	4500	4500	4825	5525
Gross Dry Weight (Approx.)*	3325	3775	3975	4050	4425	4275	4725	5300	5200	5425	6250
Gross Vehicle Weight Rating	4400	6160	6160	6160	6160	6160	7700	7700	7700	7700	7700
Payload*	1075	2385	2185	2110	1735	1885	2975	2400	2500	2275	1450
Overall Length (Approx.)**	17' 3"	18' 11"	21' 9"	21' 10"	24' 10"	23' 6"	26' 11"	27' 8"	28' 11"	30' 5"	35' 10"
Overall Width (Approx.)**	92"	96"	96"	96"	96"	96"	96"	96"	96"	96"	96"
Overall Height (Approx.)**	8' 5"	9' 7"	9' 7"	9' 7"	9' 5"	9' 7"	9' 7"	9' 7"	9' 8"	9' 8"	9' 10"
Interior Height (Approx.)	74"	78"	78"	78"	78"	78"	78"	78"	78"	78"	78"
Awning Size	N/A	12'	12'	15'	15'	15'	18'	18'	18'	18'	18'

* Gross Dry Weight and Payload Capacity will vary, depending upon optional equipment.

** Dimensions stated to industry standards. Overall Length includes approximately a four foot hitch on travel trailers. Overall Height includes air conditioner, if installed. Overall Width does not include the width of the awning, if installed.



1996 NOMAD® LIMITED

FIFTH WHEELS

Specification Chart

FIFTH WHEELS	1902	2455	2725
Sleeping Accomodations	5	6	6
Converter w/Battery Charger (AMPS)	32	32	45
LP Gas Bottles (No./Lbs.)	1/40	1/40	2/30
Fresh Water System (Gal.)	36	45	45
Gray Water Holding Tank (Gal.)	40	40	40
Black Water Holding Tank (Gal.)	40	40	40
Fast Recovery Water Heater (Gal.)	6 (Gas)	6 (Gas)	6 (Gas)
Furnace w/Electronic Ignition (B.T.U.s)	17M	25M	25M
Large Dometic Refrigerator	dbl/door	dbl/door	dbl/door
Axles	2	2	2
Tires Blackwall (Radial)	ST205/75-14B	ST225/75-15C	ST225/75-15C
Dry Hitch Weight (Approx.)	650	1150	1200
Dry Axle Weight (Approx.)	3275	5450	4475
Gross Dry Weight (Approx.)*	3925	6600	5675
Gross Vehicle Weight Rating	4800	8400	8400
Payload*	875	1800	2725
Overall Length (Approx.)**	20' 3"	25' 3"	28'-3"
Overall Width (Approx.)**	92"	96"	96"
Overall Height (Approx.)**	9' 4"	10' 9"	10' 3"
Interior Height (Approx.)	78"	78"	78"
Upper Level Interior Height (Approx.)	39"	58"	52"
Awning Size	12'	15'	15'

* Gross Dry Weight and Payload Capacity will vary, depending upon optional equipment.

** Dimensions stated to industry standards. Overall Length includes approximately a four foot hitch on travel trailers. Overall Height includes air conditioner, if installed. Overall Width does not include the width of the awning, if installed.



1996 NOMAD® LIMITED

STANDARD FEATURES

COMFORT

- Thick Seat Cushions w/Radius Corners
- Plush Carpet in Bedroom & Living Room (Per Floor Plan Shaded Area)
- Free Standing Chair (Per Floor Plan)
- Dometic® 13,500 B.T.U. Roof Air Conditioner
- Color-Coordinated Designer Interiors
- Color-Coordinated Drapes & Valances Throughout
- Color-Coordinated Bedspread(s) (Except on Bunks)
- Queen Bed (Per Floor Plan)
- Bedroom Roof Vent

CONVENIENCE

- Medicine Cabinet & Mirror in Bath
- Jalousie Windows
- 25,000 B.T.U. Furnace (17,000 B.T.U. on Models 1661, 1850 & 1902; 31,000 B.T.U. on Model 3511)
- Systems Monitor Panel
- Power Bath Vent
- Power Range Hood w/Light
- Wedgewood® High-Output Oven w/Three-Burner Range
- Dometic® Double-Door Refrigerator (Single Door on Model 1661)
- Dometic® Microwave Oven (Except Model 1661)
- AM/FM Cassette Stereo w/Speakers & Antenna
- TV Antenna
- Lift-Up Beds w/Gas Struts (Per Floor Plan)
- Embossed Vinyl Flooring
- Porcelain Kitchen Sink
- Six Gallon Gas Water Heater
- L.P. Tank Cover (On Trailers)
- Double 30 lb. L.P. Tanks (All Travel Trailers; All Fifth Wheels Except 1902 & 2455)

- Holding Tanks w/Single Drain Outlet
- Rear Bumper w/Sewer Hose Carrier
- Stabilizer Jacks (Model 2455 Only)
- Power Front Jacks (Model 2455 Only)

CONSTRUCTION

- A&E Side Awning (Except Model 1661)
- Five-Ply, 5/8" Tongue-and-Groove Fir Floor Decking
- Welded Carbon Steel Frame Chassis w/Steel Outriggers
- R7 Insulation Throughout
- Galvanized Steel Wheelwells
- Flush Clamp-Ring Windows w/Radius Corners
- Butyl Seal-Off Window Sealant
- Insulated Central Air-Conditioning Ducts in Ceiling (Travel Trailer Model 3010 & 3511; Fifth Wheel Models 2455 & 2725 Only)
- All Wood Drawers w/Travel-Lock Glide System

SECURITY

- Flush Door Latch w/Integral Dead Bolt Lock


MAINTENANCE

- ABS Tub w/One-Piece Surround (Except Model 1661)
- Fiberglass Rockguard Awning (on Models w/Front Window)
- Seamless One-Piece Rubber Roof



SAFETY

UNDERWRITERS LABORATORIES INSPECTED

Skyline manufactures Travel Trailers and Fifth Wheels with your safety in mind. Family safety is so important to us that we have  Classification and Inspection, an independent third-party review of all Skyline design, construction and appliances. U.L. is America's most respected authority on product safety and reliability. Skyline is a member of both the Recreational Vehicle Industry Association (RVIA) and the Canadian Standards Association (CSA).

SAFETY GROUP FEATURES INCLUDE:

110 Volt/12 Volt Power Converter w/Built in Battery Charger
L.P. Gas Leak Detector
110 Volt Patio, Kitchen and Bath Receptacles,
Protected by G.F.I. Circuit Interrupter
Outside Porch Light
Secondary Exit and Fire Extinguisher
Smoke Alarm
Padded Entry Door Header
Electric Brakes On All Wheels
Heavy Duty Safety Chains

NO-NONSENSE WARRANTY

Manufacturing defects reported to Skyline within one year and ten days after original retail delivery of your new Travel Trailer by an authorized dealer will be corrected without charge and within reasonable times. Excluded are misuse (including lack of reasonable maintenance), minor imperfections, alterations, and dealer or owner improper transportation, installation or hookup.

This warranty gives you specific legal rights. You may have other rights which vary from state to state.

Manufacturer's Notice: All Specifications, equipment and prices are subject to change without prior notice. Production of all models subject to seasonal scheduling. Skyline Corporation reserves the right to improve a model without incorporating these changes in similar models produced at an earlier date.

Consult your automobile dealer and your recreational vehicle dealer to assure the proper match between tow vehicle and trailer. Tow vehicle and recreational unit must be properly equalized for efficient product performance and safety. Before you purchase your recreational vehicle, carefully consider the number of people it will accommodate and its end use. Manufacturer's load capacity restrictions and recommendations must be followed for safe and efficient product performance.

Underwriters Laboratories



Inspected for Customer Safety

SKYLINE CUSTOMER SATISFACTION

Skyline Customer Satisfaction is more than just a promise. We believe you deserve quality in every aspect of ownership. To ensure your continued satisfaction, we're dedicated to providing you with a quality product along with the very best service available in our industry. Skyline's "Commitment of Excellence" will be a source of pride and satisfaction for you. Contact your Skyline dealer for details.



SKYLINE

BRINGING AMERICA HOME. BRINGING AMERICA FUN.

For the name of your nearest Skyline-built RV dealer, call:
Hemet, CA 1-800-733-4250 • McMinnville, OR 1-800-929-1080 •
Leola, PA 1-800-634-6366 • Mansfield, TX 1-800-962-7773 •
Elkhart, IN 1-800-736-2573

Your Local Nomad® Limited Dealer is:



Skyline-built RVs
carry the U.L. label