

1994 Santara Class A Motorhomes

Santara[®]

BY COACHMEN



Wide Body Design Means Enhanced Livability

The 1994 Santara Class A motorhomes by Coachmen continue to set the pace of innovations in the industry. The wide body motorhomes offer innovated floorplans, excellent utilization of space, beautiful rich interior decors and eye catching exterior graphics. This adds up to a product with obvious attention to detail and quality.

The Santara, available on both rear diesel and gasoline-powered chassis is engineered with safety, comfort and affordability in mind. The wide body floorplans enhance the livability, offering new levels of comfort in travel. Engineering and safety are evident by Coachmen being the First to receive Ford's Motorhome Quality Award. This



Santara's forward facing sofa, a Coachmen original innovation, truly provides all the comforts of home.

detailed evaluation proves once again that Coachmen's standards lead the industry.

The Santara's large panoramic windshield graces the front bus profile allowing you to take full command of your travels, instrumentation

and other controls are ergonomically positioned for easy access and function. The quality list goes on with a fully laminated 2" sidewall and crowned rubber roof for easy maintenance and structural integrity. A long list of standards adds value and luxury at an affordable price, less than you would expect to pay for such features.

If Santara reminds you of some other wise investment you've made it's because that's exactly what we were thinking when we designed it. Go ahead, indulge yourself, you deserve it!



Whether you're just relaxing or entertaining a crowd, you'll certainly appreciate Santara's wide open spaces.

Get the most for your money. Choose Coachmen.

Take one step inside Coachmen's new Santara Class A motorhome and you'll immediately experience the difference. There's extra living space galore!

The Santara—available on both rear diesel and gasoline-powered chassis—is designed with a wider body, bringing new dimensions to motorhome livability and utility. Santara's innovative wide floorplans result in significantly more usable interior space. That translates into a lot more comfort and convenience for you. Better yet, Santara is affordably priced, so you get much more motorhome for the money.

This new bus style motorhome has a crisp and contemporary look, both inside and out. From the free-flowing graphic design to the elegant interiors, Santara is a great combination of form and function.

And, Santara is equipped for value with a long list of standard features, including: hardwood framed Velvet Cherry interior doors, coach day-night shades, built-in remote control color TV, deluxe sound system, fiberglass tub/shower liner, island queen bed with decorator headboard and pillow shams, aluminum cage fully-laminated construction, TV antenna, six gallon electronic ignition water heater, docking lights, stainless steel wheel inserts and a towing hitch. All standard!

Coachmen Adds Value

When selecting a recreational vehicle, you are making an investment. Coachmen is designed to enhance your investment, and is by far the best value you will find.

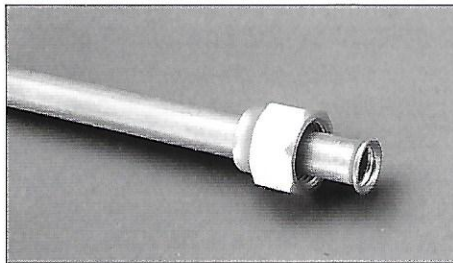
We design our products for your long term satisfaction and enjoyment. Many other brands cut corners in areas that are hidden from you . . . until after the purchase. Coachmen doesn't cut corners. We add performance and safety features that aren't always easy to see, but are very easy to appreciate down the road.

You care about the total cost of owning your RV and so do we. Cost of ownership includes the initial purchase price, plus a lot more: it's quality, product performance, safety, ease of maintenance, resale value, a company and warranty you can rely on, and even camping fellowship. In other words, overall value.

Coachmen pays careful attention to all of these factors. Here are just some of the ways Coachmen gives you the most for your money, today and tomorrow.

Safety Is First

Safety is taken very seriously at Coachmen. It's something we will not compromise, and we build safety into our products whether or not you can see those features.



Take the L.P. System. To protect against dangerous corrosion and resulting leaks, every Coachmen unit uses heavy-duty copper tubing for gas lines. Many other brands use inexpensive black pipe. And, to ensure the tightest seal at fittings, we give our copper tubing a double flare at each joint. Our L.P. lines are designed to run through the frames or sub-flooring, wrapped by a protective shroud, to help guard against road damage. Unlike others, we do not drape our tubing below the frame

and axles. Finally, all of our units feature an L.P. lead detector and carbon monoxide detectors as standard equipment.

Another example of safety are seatbelts at each designated seating position, and our belts are bolted through the floor into steel plates.

Beautiful Livability

As the innovator in affordable, wide body products, Coachmen is leading the industry with unique floorplans like the Front Lounge models, all designed to maximize your comfort and convenience.

And with Coachmen, the interior appointments have been carefully designed for long-lasting beauty. The interior decor schemes of many new motorhomes may appear to be attractive at first, but the discerning customer should understand that major differences do exist.

Coachmen uses only high-grade, stain-repellant fabrics for all seating. Our fabrics pass the highest quality standards set for fine home furnishings, and must satisfy Automated Durability Testing to meet our requirements.

Seating comfort and durability also depends on the seating construction itself. Though much less expensive foam is available, we specify a heavy density foam to assure that your furniture and cushions don't rapidly compress or disintegrate which soft, cheap foam can do. And, our seating frames are steel, not wood, for added safety in your motorhome.

Another aspect of interior beauty pertains to safety. Federal law requires that all soft goods in motorized products be chemically treated with a flame retardant. To save money some brands may gamble with your safety and disregard the law. As we've mentioned, Coachmen considers safety a priority. Be assured that all fabrics, carpets and even foam in our furniture is either

inherently fire resistant or chemically treated to be flame retardant.

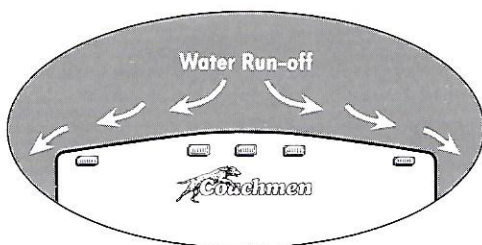
Innerspring mattresses are also not all alike. The durability and long term comfort of your mattress is determined by the number of coils, or springs, inside the mattress. The more coils in your mattress, the more your body weight will be supported for a good night's rest.

Most brands today advertise innerspring mattresses, but they don't mention that they only have 180 coils. Our queen innerspring has 252 coils, which are string-tied for durability and wrapped with high density foam for maximum comfort.

Product Performance

You want your recreational vehicle to perform with reliability. Coachmen takes pains to see that our products do just that.

One thing you expect is a good roof over your head, and you get it with Coachmen. Every Coachmen motorized product has a fully-laminated roof system, which gives you superior strength and insulation.



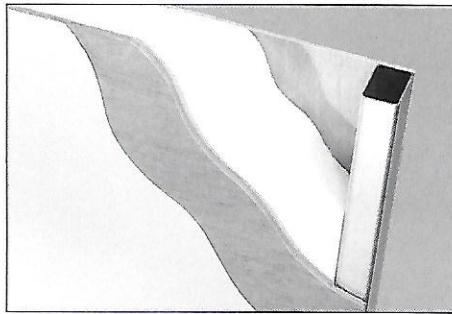
As this illustration shows, our crowned roof provides critical structural integrity and water drainage, so important for strength and leak protection. While flat roofs may save some money initially, the initial savings can be rapidly consumed by much higher repairs and maintenance costs due to sagging roofs and water problems.

The roof also features a heavy-duty seamless rubber outer skin for industrial quality leak prevention. The easy maintenance rubber skin also provides extra insulation and a sound barrier.

Under the rubber outer skin, the Santara features aluminum tapered rafters for strength and water drainage.

A good foundation is especially important, and we are proud of ours.

We borrowed engineering principles long proven in aircraft design, where strength and weight are both critical. Like landing gear, we put high density steel in our floor frame and foundation. For lighter weight strength, we utilize aluminum structural ribbing in our fully laminated walls, roofs and floors.



Coachmen laminated walls utilize aluminum structural ribbing to provide durability and strength with the benefits of lighter weight.

Unlike many other brands, our floors are fully-laminated and insulated with Polystyrene, which is one of the densest insulations available. Every Santara motorhome floor is built on a steel truss basement that features formed bulkheads and a sheet steel barrier, for a much stronger foundation and very necessary protection against loss of heat and unwanted noise. The insulated basement floors help to protect all storage compartments, plumbing and appliances from the cold. Finally all of our models are finished with automotive undercoating, for protection against road salt, grime and rust.

Appliances are also important to product performance. Coachmen uses only name brand appliances, which means both reliability and availability of warranty and replacement parts in the future.

And, we take extra steps to ensure that the appliance performs satisfactorily.

For example, we insulate all of our refrigerator compartments, to improve its cooling effectiveness, particularly in warmer temperatures.

To improve your cooking experience, we worked with our vendor to develop a high-output three-burner

range. This gives you the space and heat capacity essential to cooking for crowds.

Designed for Durability

Durability means fewer problems, less maintenance and a better trade-in value. We take extra care in this area.

The performance of the motorized aspect of your coach is very important to your long term satisfaction. Even though Coachmen does not design or manufacture the chassis, we know there are things we can do to assist its performance.

Weight is the most important consideration. Every chassis and engine is designed to handle a specified amount of total weight, which includes the coach portion of your unit, you and your passengers, your cargo, fluids and towing capacity. Overweight conditions will hinder the performance of your vehicle. Unlike others, our products are designed to be realistically used, within reasonable guidelines. So that you can know exactly how much weight you can safely carry, we provide a weight specification sheet for each individual Santara, as it is equipped.

Our 30 years of experience in the RV industry have helped us develop these careful design considerations. We enhance this experience with computer technology in design and testing. Performance criteria are analyzed for major components and select models are tested at an independent proving ground for strength, durability and road handling characteristics.

Coachmen's attention to detail, and dedication to quality and customer satisfaction earned our recognition as the first and only RV manufacturer to achieve Ford Motor Company's QVM certification. (See back page)

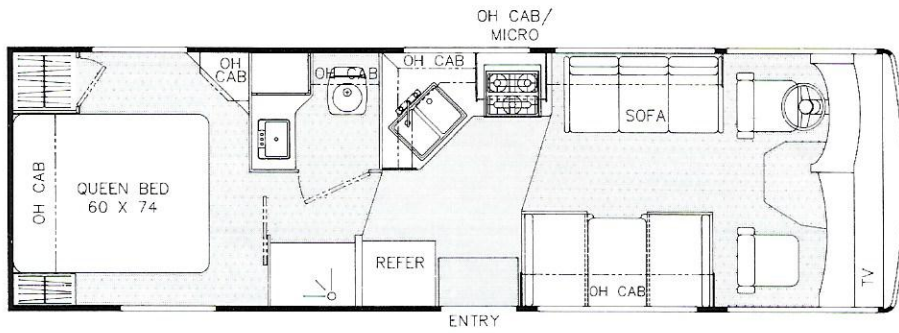
We and your dealer welcome the opportunity to tell you more about the wonderful value of Santara Class A motorhomes by Coachmen Recreational Vehicle Company.

Santara Class A Floor Plans and Technical Specifications



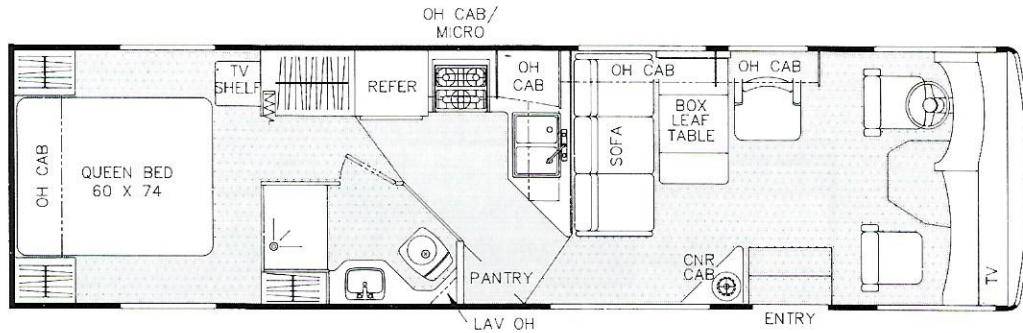
When it comes to space utilization, Coachmen has no equal. That's because designing for livability is one of our first and foremost concerns. Whether studying our floorplans or comparing our specifications to the competition, you'll find that you get more for your money when you choose Coachmen.

280_{QB} Queen Bed

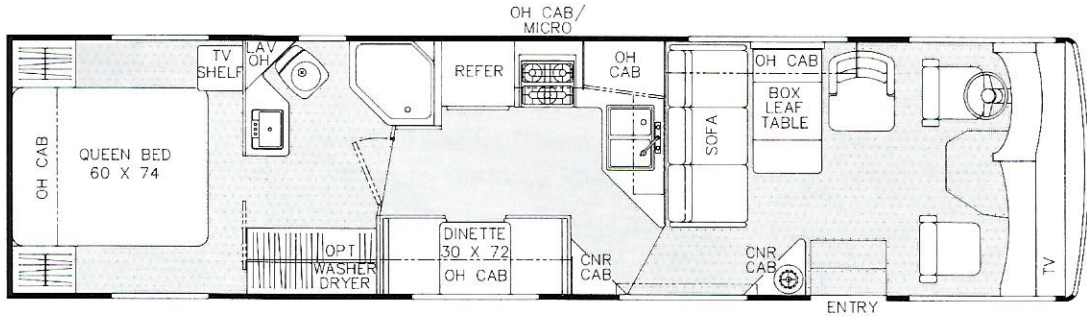


SA280QB GAS

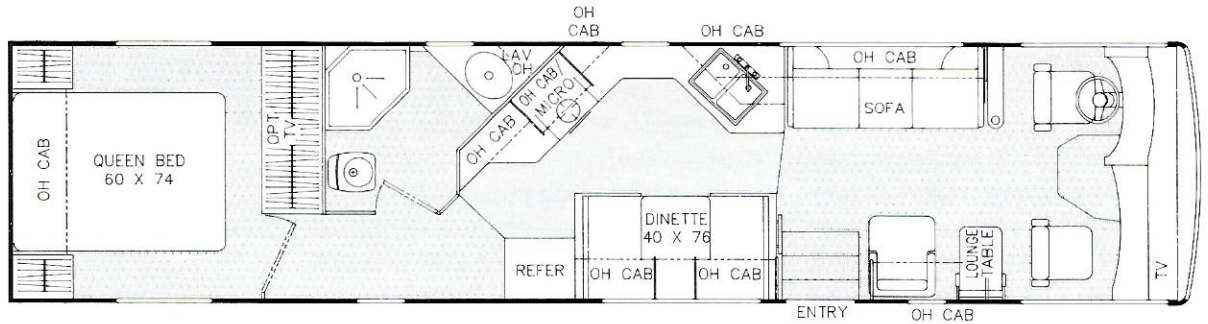
320_{FL} Front Lounge



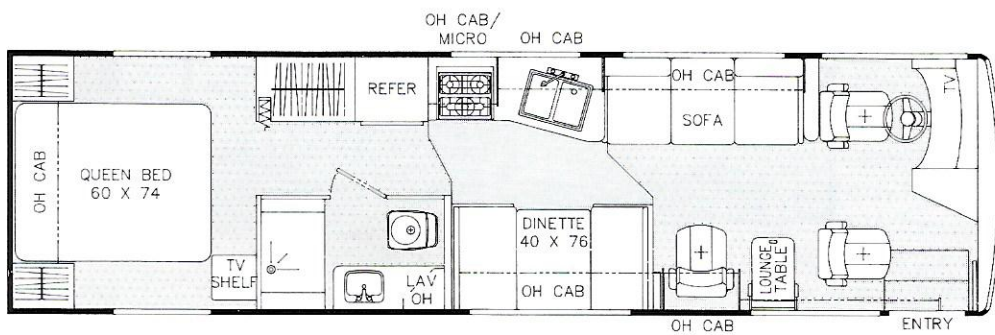
350SI
Side Aisle



370SI
Side Aisle

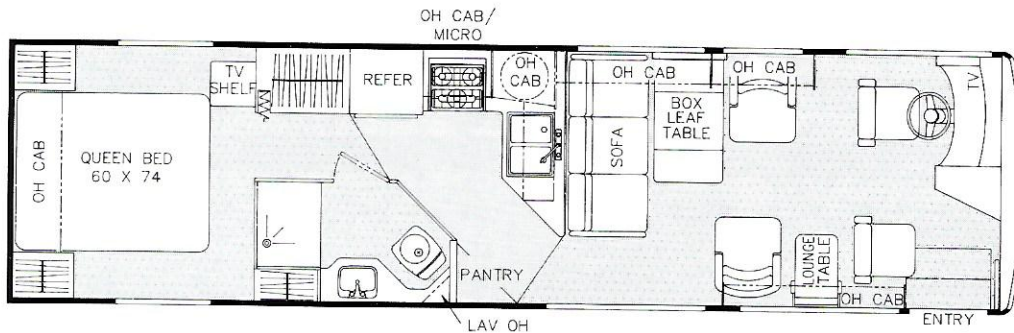


310MB
Mid Bath
Rear Diesel



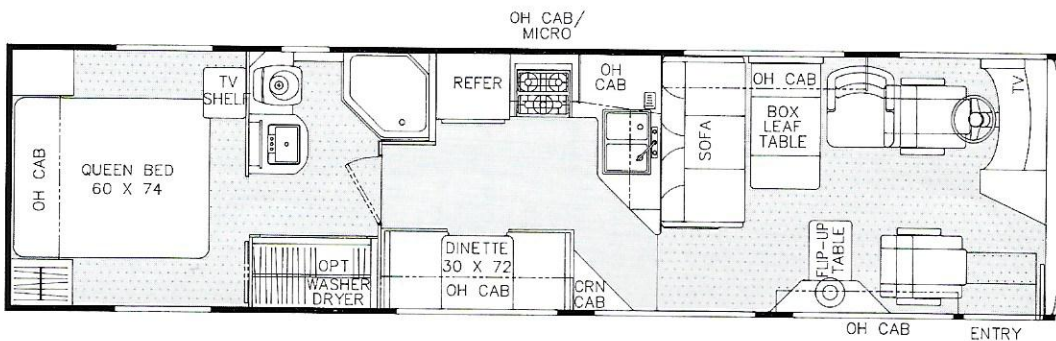
320FL

Front Lounge
Rear Diesel



350FL

Front Lounge
Rear Diesel



Available as optional equipment



Featuring
**4-POINT BI-AXIS
LEVELING**

HYDRAULIC LEVELING SYSTEMS

Santara Class A Motorhomes

| | Gasoline | | | | Diesel | | |
|-----------------------------|----------|--------|--------|--------|---------|---------|---------|
| | 280 QB | 320 FL | 350 FL | 370 SI | 310 MB | 320 FL | 350 FL |
| Chassis | Ford | Ford | Ford | Ford | Spartan | Spartan | Spartan |
| Exterior Length | 29' | 32'10" | 34'10" | 36'6" | 32'8" | 32'8" | 34'2" |
| Exterior Clearance Height‡ | 11'1" | 11'1" | 11'1" | 11'1" | 10'8" | 10'8" | 10'8" |
| Exterior Width | 8'4½" | 8'4½" | 8'4½" | 8'4½" | 8'4½" | 8'4½" | 8'4½" |
| Interior Width | 8' | 8' | 8' | 8' | 8' | 8' | 8' |
| GVWR Pounds* | 17,000 | 17,000 | 17,000 | 17,000 | 18,000 | 18,000 | 18,000 |
| UVWR Pounds** | 12,712 | 12,947 | 13,840 | 15,168 | N/A | 19,374 | 15,621 |
| GAWR Front*** Pounds | 6,000 | 6,000 | 6,000 | 6,000 | 6,000 | 6,000 | 6,000 |
| GAWR Rear*** Pounds | 11,000 | 11,000 | 11,000 | 11,000 | 12,000 | 12,000 | 12,000 |
| GCWR**** Pounds | 25,000 | 25,000 | 25,000 | 25,000 | 20,000 | 20,000 | 20,000 |
| Chassis Model | F53 | F53 | F53 | F53 | EC 2242 | EC 2242 | EC 2242 |
| Engine Size—Cubic Inch | 460 | 460 | 460 | 460 | 360 | 360 | 360 |
| Wheel Base | 190" | 208" | 208" | 208" | 190" | 190" | 208" |
| Rear Axle Ratio | 5.13 | 5.13 | 5.13 | 5.13 | 3.73 | 3.73 | 3.73 |
| Fuel Capacity (gal.) | 75 | 75 | 75 | 75 | 80 | 80 | 80 |
| Alternator Amps | 100 | 100 | 100 | 100 | 105 | 105 | 105 |
| Fresh Water Capacity (gal.) | 80 | 45 | 51 | 80 | N/A | 80 | 80 |
| Waste Water Capacity (gal.) | 45 | 45 | 42 | 40 | 45 | 45 | 45 |
| Grey Water Capacity (gal.) | 45 | 45 | 45 | 45 | 45 | 45 | 45 |
| Water Heater Capacity | 6 | 6 | 6 | 6 | 6 | 6 | 6 |
| LP Gas Capacity (lb.) | 85 | 85 | 85 | 85 | 85 | 85 | 85 |
| Furnace Rating (x 1000) BTU | 30 | 34 | 34 | 34 | 34 | 34 | 34 |
| Tire Size | * | * | * | * | † | † | † |

- *GVWR** **Gross Vehicle Weight Rating:** Maximum loaded weight of a vehicle as established by the manufacturer. (NHTSA)
- **UVW** **Unloaded Vehicle Weight Rating:** The weight of a unit and maximum fluid capacity for operation of the unit but without cargo, occupants, or accessories that ordinarily are removed from the vehicle when it is not in use (NHTSA). Rating shown is for unit with no factory or dealer installed options.
- ***GAWR** **Gross Axle Weight Rating:** Total weight an axle, suspension and tires are designed to carry.
- ****GCWR** **Gross Combined Weight Rating:** Total loaded weight of a unit and towed vehicle combination as established by the manufacturer. Includes unit and tow vehicle weight, equipment, gas, water, passengers and payload.

NOTES: All specifications are approximate. NA=Not available at time of printing.
 * =LT235/85R16E † =8R19.5D ‡ =Add 10" for Roof Air Conditioner.

NOTE: All capacities are approximate. All fuel and liquid capacities are approximate all dimensions are nominal. Coachmen motorhomes are designed to allow for a variety of uses. Each unit features optimum seating, fluid storage and sleeping capacity. Although all seats are equipped with seatbelts for your safety, seats occupied while vehicle is in motion will depend on your total load. While the customer is the beneficiary of this design, the customer also bears the responsibility to select the proper combination of load/cargo and passengers without exceeding the chassis weight capacities. Coachmen assists you in this decision by posting a weight calculation form stating actual unit weight with factory installed options inside a wardrobe/cabinet.



Santara RD Features The Spartan EC-2000 Chassis

Every Santara Rear Diesel motorhome is built on the popular Spartan EC-2000 chassis. The EC-2000 is loaded with great standard features and specifications such as:

- Engine**—Cummins Diesel 5.9 litre, 190 hp (230 hp optional)
- Transmission**—Allison AT-542 4-speed automatic. (Allison MD-3060, 6-speed electronic transmission included with optional 230 hp engine.)
- Air Over Hydraulic Brakes**—Superior and safe stopping power.
- Wide Track Suspension**—41" frame for improved steering and handling.
- "Posi-Steer" System**—Provides smooth, tight steering and handling.
- Function Coded Wiring**—Easier to read and troubleshoot.
- Four Point Cradle Engine Mount**—Reduces engine vibration

Santara Class A Motorhomes

| Items | Model | Gasoline | | | | Diesel | | |
|-----------------------------------|-------|----------|--------|--------|--------|--------|--------|--------|
| | | 280 QB | 320 FL | 350 FL | 370 SI | 310 MB | 320 FL | 350 FL |
| Interior & Decor | | | | | | | | |
| Deluxe Velvet Decor | | ■ | ■ | ■ | ■ | ■ | ■ | ■ |
| Raised Panel Doors | | ■ | ■ | ■ | ■ | ■ | ■ | ■ |
| Jack Knife Sofa | | ■ | ■ | ■ | ■ | ■ | ■ | ■ |
| Side Dinette | | ■ | ■ | ■ | ■ | ■ | ■ | ■ |
| Recline, Swivel Pilot Seats | | ■ | ■ | ■ | ■ | ■ | ■ | ■ |
| Lounge Chair | | ■ | ■ | ■ | ■ | ■ | ■ | ■ |
| Day/Night Shades—Coach | | ■ | ■ | ■ | ■ | ■ | ■ | ■ |
| Roller Shades—Bedroom | | ■ | ■ | ■ | ■ | ■ | ■ | ■ |
| Deluxe AM/FM Cassette | | ■ | ■ | ■ | ■ | ■ | ■ | ■ |
| TV Antenna and Rotor Package | | ■ | ■ | ■ | ■ | ■ | ■ | ■ |
| Cable TV and Phone Jack | | ■ | ■ | ■ | ■ | ■ | ■ | ■ |
| Back Up Camera Ready | | ■ | ■ | ■ | ■ | ■ | ■ | ■ |
| Color TV—Coach | | ■ | ■ | ■ | ■ | ■ | ■ | ■ |
| Radius Slider Windows | | ■ | ■ | ■ | ■ | ■ | ■ | ■ |
| Cab Privacy Drape | | ■ | ■ | ■ | ■ | ■ | ■ | ■ |
| Carbon Monoxide Detector | | ■ | ■ | ■ | ■ | ■ | ■ | ■ |
| LP Leak Alarm | | ■ | ■ | ■ | ■ | ■ | ■ | ■ |
| Smoke Detector | | ■ | ■ | ■ | ■ | ■ | ■ | ■ |
| Fire Extinguisher | | ■ | ■ | ■ | ■ | ■ | ■ | ■ |
| Galley | | | | | | | | |
| Microwave Ready | | ■ | ■ | ■ | ■ | ■ | ■ | ■ |
| Three Burner High Output Range | | ■ | ■ | ■ | ■ | ■ | ■ | ■ |
| Power Range Hood | | ■ | ■ | ■ | ■ | ■ | ■ | ■ |
| Monitor Panel | | ■ | ■ | ■ | ■ | ■ | ■ | ■ |
| Double Door Refer | | ■ | ■ | ■ | ■ | ■ | ■ | ■ |
| Large Double Door Refer | | ■ | ■ | ■ | ■ | ■ | ■ | ■ |
| Cutting Board Sink Cover | | ■ | ■ | ■ | ■ | ■ | ■ | ■ |
| Linoleum Flooring | | ■ | ■ | ■ | ■ | ■ | ■ | ■ |
| Silverware Drawer | | ■ | ■ | ■ | ■ | ■ | ■ | ■ |
| Sleeping | | | | | | | | |
| Queen Bed | | ■ | ■ | ■ | ■ | ■ | ■ | ■ |
| Innerspring Mattress | | ■ | ■ | ■ | ■ | ■ | ■ | ■ |
| Bedsread, Pillow Shams, Headboard | | ■ | ■ | ■ | ■ | ■ | ■ | ■ |
| Electrical/Heating/AC | | | | | | | | |
| 30', 30 AMP Power Cord | | ■ | ■ | ■ | ■ | ■ | ■ | ■ |
| 110/12V Power Converter | | ■ | ■ | ■ | ■ | ■ | ■ | ■ |
| Generator Prep and Mounting Kit | | ■ | ■ | ■ | ■ | ■ | ■ | ■ |
| Battery Disconnect Switch | | ■ | ■ | ■ | ■ | ■ | ■ | ■ |
| Auxiliary Battery | | ■ | ■ | ■ | ■ | ■ | ■ | ■ |
| Power Entrance Step | | ■ | ■ | ■ | ■ | ■ | ■ | ■ |
| Emergency Start Switch | | ■ | ■ | ■ | ■ | ■ | ■ | ■ |
| GFI Circuit | | ■ | ■ | ■ | ■ | ■ | ■ | ■ |
| Pre-wired For Roof AC | | ■ | ■ | ■ | ■ | ■ | ■ | ■ |
| Patio Light | | ■ | ■ | ■ | ■ | ■ | ■ | ■ |
| Aisle Lighting | | ■ | ■ | ■ | ■ | ■ | ■ | ■ |
| Floor Ducted Heat | | ■ | ■ | ■ | ■ | ■ | ■ | ■ |
| Defroster Fans | | ■ | ■ | ■ | ■ | ■ | ■ | ■ |
| Bath and Water | | | | | | | | |
| Folding Shower Door | | ■ | ■ | ■ | ■ | ■ | ■ | ■ |
| Six Gallon El Water Heater | | ■ | ■ | ■ | ■ | ■ | ■ | ■ |
| Power Bath Vent | | ■ | ■ | ■ | ■ | ■ | ■ | ■ |
| Double Pedal Toilet | | ■ | ■ | ■ | ■ | ■ | ■ | ■ |
| One Piece ABS Tub Surround | | ■ | ■ | ■ | ■ | ■ | ■ | ■ |
| Demand Water Pump | | ■ | ■ | ■ | ■ | ■ | ■ | ■ |
| Medicine Cabinet | | ■ | ■ | ■ | ■ | ■ | ■ | ■ |
| Automotive/Exterior | | | | | | | | |
| Basement Floor Design | | ■ | ■ | ■ | ■ | ■ | ■ | ■ |
| Cruise Control | | ■ | ■ | ■ | ■ | ■ | ■ | ■ |
| Tilt Wheel | | ■ | ■ | ■ | ■ | ■ | ■ | ■ |
| Intermittent Wipers | | ■ | ■ | ■ | ■ | ■ | ■ | ■ |
| Dash Air Conditioning | | ■ | ■ | ■ | ■ | ■ | ■ | ■ |
| Towing Hitch | | ■ | ■ | ■ | ■ | ■ | ■ | ■ |
| Wheel Liners | | ■ | ■ | ■ | ■ | ■ | ■ | ■ |
| Remote Power Mirrors | | ■ | ■ | ■ | ■ | ■ | ■ | ■ |
| Luggage Rack and Ladder | | ■ | ■ | ■ | ■ | ■ | ■ | ■ |
| Docking Lights | | ■ | ■ | ■ | ■ | ■ | ■ | ■ |

Optional Features

- 230 HP Cummins Diesel Engine (Diesel Models)
- Full Carpet with Pad Microwave Coffee Maker
- VCP-Video Player Bedroom TV (some models)
- Rear Twin Beds (Gas Models Only) 50 Amp Service (Some Models) 4.0 or 6.5 KW Gas Generators
- Fantastic Roof Fan Roof AC Air Assisted Suspension (Gas Models) Computerized Hydraulic Leveling Jacks Spare Tire Awning Driver's Door with Electric Window Rear Back Up Camera
- Combination Washer and Dryer with 10 gallon El Water Heater (Some Models)

Consult your Coachmen dealer for details on available options. Some options are included in options packages. Not all options are available on all models.

Please Note: The Santara is an exciting product that features a wider body design of 100". This small added width gives you significantly enhanced interior living space and innovative floorplans to choose from.

In making your purchase decision, you should be aware that several states restrict access on some or all state roads to 96" in body width. However, special road usage permits may be available in these states.

At the time of this printing, a vast majority of states allow for 102" body width on all highways. 102" body width is now allowed on all federal highways in the United States.

Before making your purchase decision, you may wish to confirm the road usage laws in the states of interest to you.

If width is of concern to you, we invite you to consider the broad array of other Coachmen products offered in the standard 96" width.

All illustrations and specifications contained herein are based upon the most recent product information at the time of publication. Because Coachmen Industries, Inc., its divisions and various other suppliers reserve the right during the product model year to make changes in the component parts (including but not limited to prices, colors, materials, equipment and specifications) and reserve the right to discontinue models of recreational vehicles at any time without notice, you should confirm the existence of any illustration and/or specification contained herein that is material to your decision to purchase any recreational vehicle described herein. Coachmen assumes no responsibility for any error in type or print reproduction of specifications contained herein. You should check with your Coachmen dealer if you have specific unanswered questions.

- =Standard
- =Optional

Coachmen's commitment to giving the most for your money does not stop with your purchase . . . it goes on and on.

You Can Count On Us!

Warranty protection is something you can count on with Coachmen. In fact, nobody protects you better.

Since the early days of our history, thirty years ago, we've believed in our products and our customers. That's why we were one of the first companies to offer a warranty. Our famous Buckstopper Warranty policy insures you that we stand behind all of our products with pride. The only way we could make it any better would be to extend it!

We are pleased to provide you with a two-year Extended Limited Structural Warranty, for peace of mind regarding the floor, ceiling assembly and laminated structural compo-



nents. Please ask your Coachmen dealer for complete details on our generous warranty programs.

The Coachmen Owner's Registration Card is your passport to worry-free travel. No matter where you visit throughout the United States and Canada, our network of independent dealers stand ready to provide you with courteous, dependable service.

Coachmen also gives you enhanced resale value, because the Buckstopper Warranty may be transferred to a subsequent owner for a small registration fee. (Sorry, the Extended Limited Structural Warranty may not be transferred.)

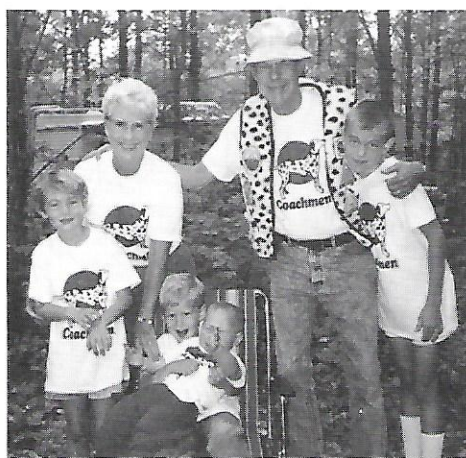
We work hard to see that our products perform to your satisfaction, but should something go wrong with our workmanship or materials during the warranty period, we will fix it.

When making your investment in a recreational vehicle, you should select a company you can count on, with a warranty you can depend upon. We invite you to compare ours to the competition.

Friends and Fellowship

One of the nicest joys of RV ownership is to share good times with good people. To enhance your ownership experience, we offer you a free, one-year membership in the International Coachmen Caravan Club, with the purchase of any new Coachmen brand recreational vehicle.

In addition to an automatic expansion of your circle of friends, your Caravan membership brings you lots of other benefits, like: ■ A 10% discount at over 2,500 participating campgrounds in the United States and Canada ■ Free \$5,000 Accidental Death & Dismemberment Insurance Policy ■ Free trip planning services ■ Free Lost Key Return Service, and ■ Free Campground Directory and membership magazines.



Other benefits that are yours at an optional low cost include: ■ Frequent special interest trips and tours ■ Rallies ■ Emergency Road Service Program ■ Long-term Health Care Insurance policy, and ■ Eligibility for our own Coachmen Caravan Master Card.

The list of benefits from your free membership in the Coachmen Caravan is very long. But, the most important benefit is the enjoyment you find in shared memories with friends and family. This benefit is uniquely yours from Coachmen.



RVIA Seal of Approval

All Coachmen recreational vehicles bear the Recreational Vehicle Industry Association Seal which certifies compliance with national health and safety rules.



This rear queen bedroom combines rich velvet cherry cabinets with an elegantly coordinated decor.



Choose From These Beautifully Coordinated Decor Fabrics

Coachmen uses only high-grade, stain-repellent fabrics for all seating. Our fabrics pass the highest quality standards set for fine home furnishings, and must satisfy Automated Durability Testing to meet our requirements.



Dresden Blue



Iced Aqua



Mulberry



Doeskin



Thirty Years of Commitment to Excellence

Thirty years ago, three brothers had a vision of the business opportunities in the emerging recreational vehicle industry. Combining their experience in finance, marketing and manufacturing, Claude, Keith and Tom Corson founded what is now known as Coachmen Recreational Vehicle Company.

The Corsons' confidence in the RV industry was well-founded. From first-year production that included 12 travel trailers, one pick-up truck camper and 80 truck caps, the company has become a diversified, full-line manufacturer of recreational vehicles. The Company's RV product lines include Class A motorhomes, mini-motorhomes, travel trailers, fifth wheels, truck campers and camping trailers.

Over the years, Coachmen RV Company has far surpassed the vision of its founders. The company has become a recognized leader in the design, manufacture and marketing of recreational vehicles.

The tremendous success of Coachmen Recreational Vehicle

Company helped to form Coachmen Industries, Inc., a publicly held corporation with stock listed on the New York Stock Exchange under the COA symbol. Coachmen Industries, Inc., aside from its core business of recreational vehicles, has thriving interests in the modular housing, specialty vehicles and contract office furniture industries.

Coachmen RV owes a great deal of its long time success to its quality dealer network and its support of products and programs in the marketplace worldwide. Coachmen has always been known for its commitment to outstanding customer service at both the wholesale and retail level.

The products of Coachmen Recreational Vehicle Company are designed and manufactured in over 565,000 square feet of facilities located in Middlebury, Indiana and Fitzgerald, Georgia. Dealers are located throughout the United States and Canada, as well as parts of Europe.

Coachmen Quality— “World Class”

According to Ford Motor Company, an international leader in overall quality management, Coachmen Recreational Vehicle Company is a **“Customer Driven Company . . . Fully Active in World Class Quality Process Methodology.”**

That assessment was made recently after Ford quality experts thoroughly inspected virtually all aspects of Coachmen's management and manufacturing processes. Coachmen is the **First and Only** manufacturer to be so recognized at this time.

Ford said Coachmen's quality program is so effective due to: ■ Outstand-

ing Management Commitment to Quality ■ Excellent Quality Control Applications ■ Proven Customer Service Support ■ Dedicated Response to Quality Concerns ■ Thorough and Sound Engineering Practices ■ Comprehensive and Exemplary Process Controls ■ Great Overall Employee Involvement ■ Complete Vehicle Inspection and Sign-Off.

It's all part of the most comprehensive quality and customer satisfaction program in the recreational vehicle industry today. Protect your investment. Buy a Coachmen!

Your Coachmen Dealer is:



Recreational Vehicle Company
P.O. Box 30, Middlebury, IN 46540

