

# HORNET



HORNET TRAVEL TRAILERS & FIFTH WHEELS · BY DAMON CORPORATION

# LENZMOH

Travel trailer and fifth wheel buyers with an eye for value are sure to like what they see in the new Hornet Towable Series. Hornet Travel Trailers and Fifth Wheels are the perfect illustration of quality at an affordable price. That's value. Value by design as only Damon can produce.

## THOUGHTFULLY DESIGNED.

There are no shortcuts to creating a masterpiece and no shortcuts were taken in designing the new Hornet Towables. One look and you'll see exactly what we mean. There are an incredible 27 floor plans with options available. Every one of them is a portrait of comfort and convenience. Appliances are strictly state-of-the-art including three-burner, high-output range with oven, large, flush-mounted refrigerator, and a large double-bowl porcelain kitchen sink.

## HORNET TRAVEL TRAILERS AND FIFTH WHEELS. THE VERY PICTURE OF VALUE.

The decor is a beauty to behold. Oak-framed cabinet doors, wainscoting and chair rail add charm and warmth not commonly found in recreational vehicles at any price. The designer fabrics for upholstered furniture, drapes, valances and bedroom accessories feature stylish colors and patterns that are as timeless as they are tasteful. Accent items like decorator glass cabinet doors over the sofa and bed lend the perfect additional touches to this unique decor package.

The exterior of the Hornet is equally attractive and practical. Damon's overall exterior styling has become the standard of the industry. Black radius corner jalousie windows and a front travel awning (on Hornet travel trailers) perfectly complement the rugged two-tone exterior walls.

## A GALLERY OF EXCEPTIONAL FEATURES.

Of course, good design means more than good looks. It includes precise engineering and quality construction. And those attributes really set Hornet apart from the competition.

The sidewalls of the Hornet are of wood frame construction with an aluminum exterior. In addition, Hornet Towables feature tandem, wide-track brake axles, 15" radial tires with sport wheels on many models, and large exterior storage access.

Another reason Hornet Travel Trailers and Fifth Wheels are such a superb value is that many of the most popular options on competitive brands come standard with Hornet. Of course, if it's options you want, Hornet has plenty. Including queen or twin beds, central air conditioning, microwave, cable-ready wiring and auxiliary TV jack and much more.

If you think this brochure has painted a pretty picture of the value and appeal of Hornet Travel Trailers and Fifth Wheels, wait until you see the real thing. Come to think of it, what are you waiting for? It's on your dealer's lot right now.

(Left) Spacious galley flush-mounted refrigerator (Model 30R) Ocean Reef fabric decor porcelain sink and large kitchen sink (Model 265H) featuring oak-

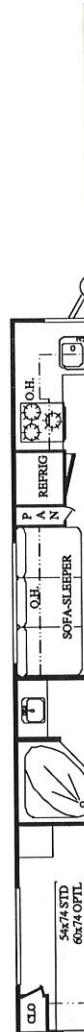
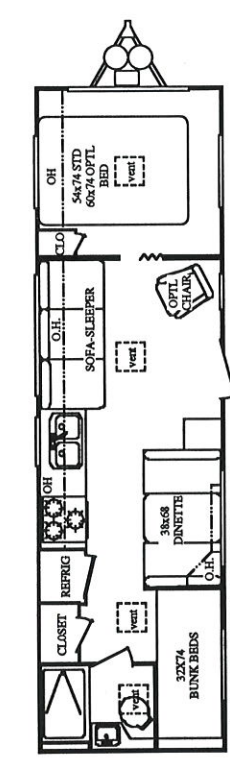
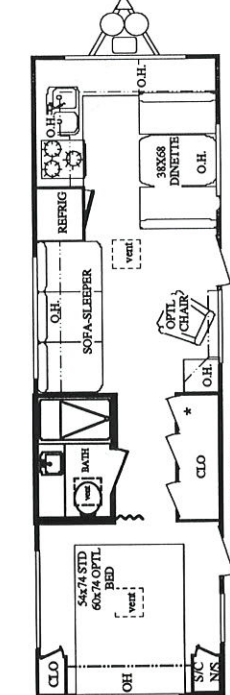
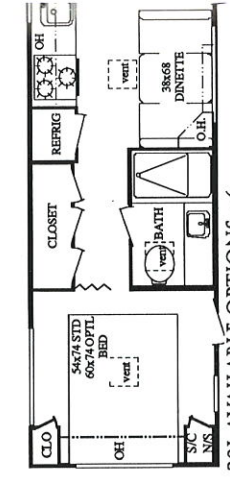
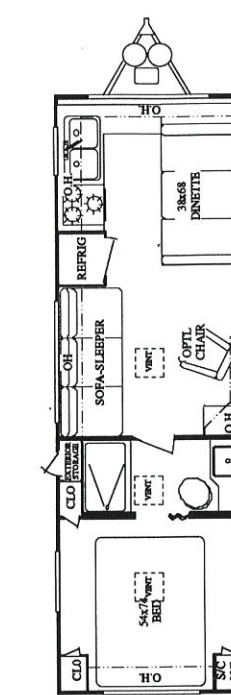
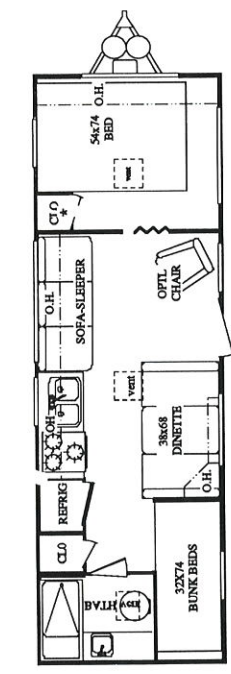
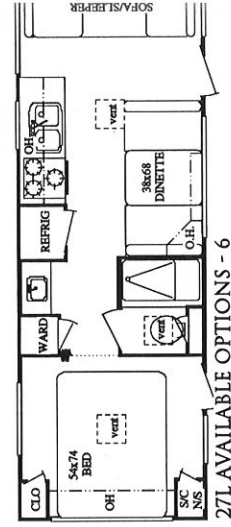
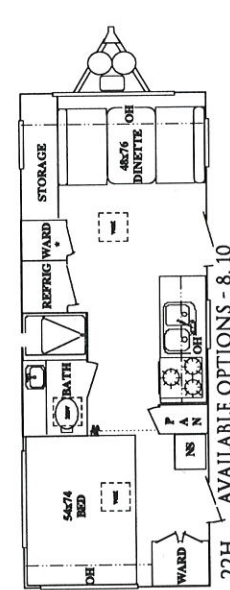
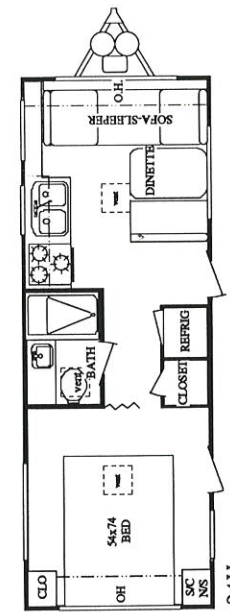
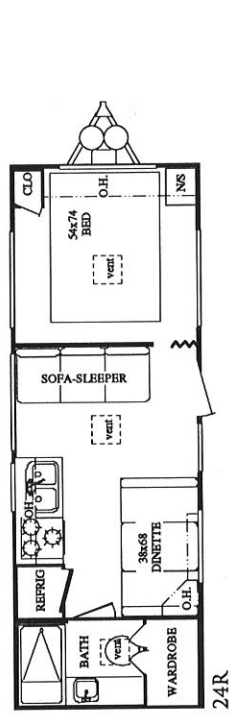
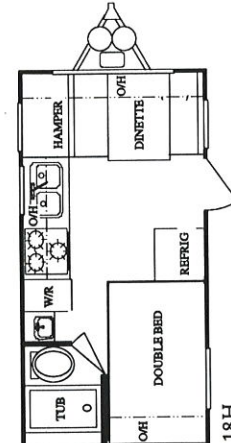
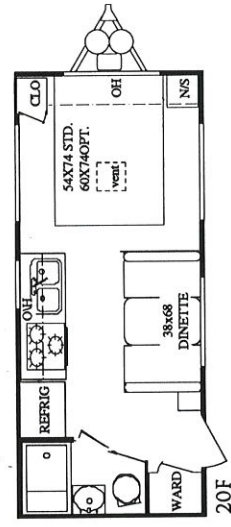
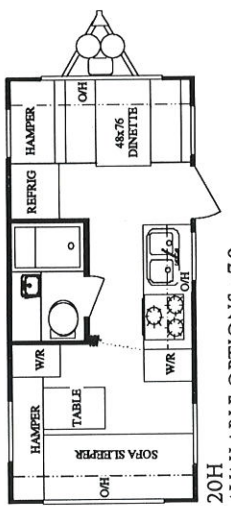
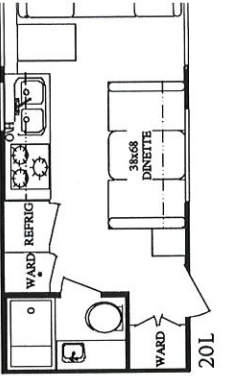




Hommet Travel Trailer (Model 27F) with oak-framed cabinetry, three-burner, high-output range. (Center) Hommet Travel Trailer with oak-framed cabinet doors with designer glass inserts and designer shades with drapes and valances, large double-bowl counter tops. (Right) Interior of Hommet Fifth Wheel (Model 27F) with oak-framed cabinet doors and easy action slide-out living and dining area.



# 1994 HORNET TRAVEL TRAILER FLOOR PLAN SELECTIONS



AVAILABLE OPTIONS - 7,9

AVAILABLE OPTIONS - 4, 6

AVAILABLE OPTIONS - 6

AVAILABLE OPTIONS - 1

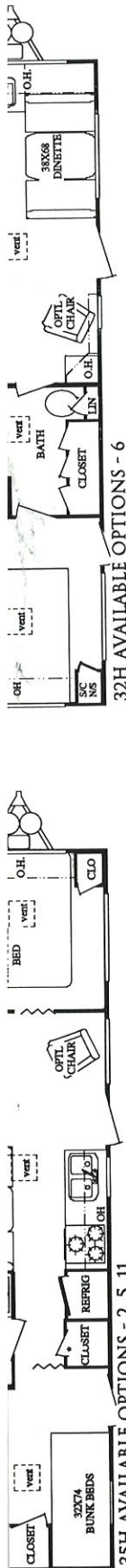
AVAILABLE OPTIONS 6

AVAILABLE OPTIONS - 6

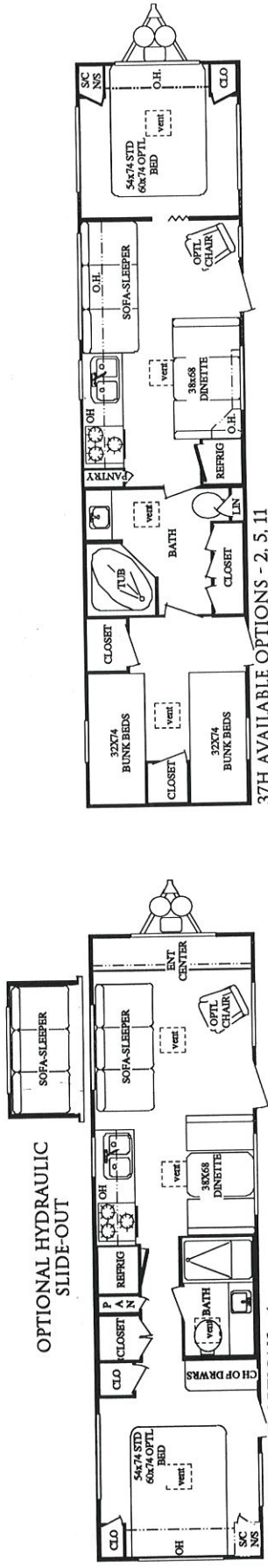
AVAILABLE OPTIONS - 6

AVAILABLE OPTIONS - 1

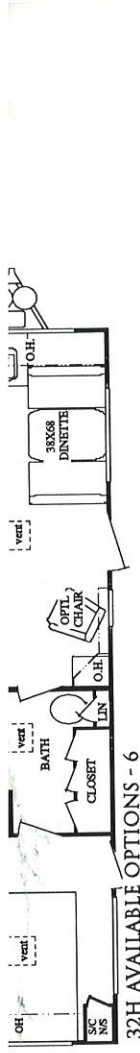




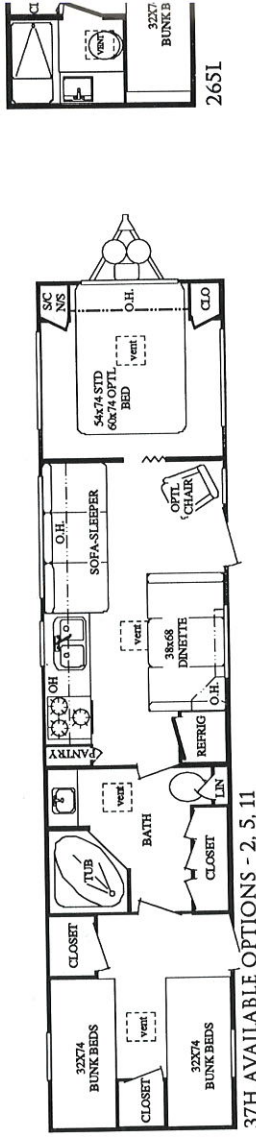
35H AVAILABLE OPTIONS - 2, 5, 11



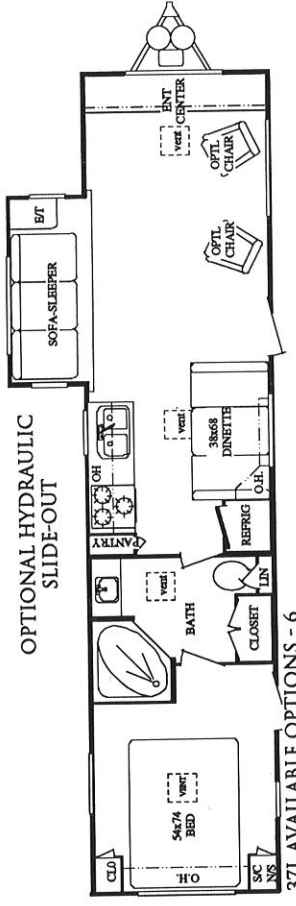
32L AVAILABLE OPTIONS - 2, 5, 11



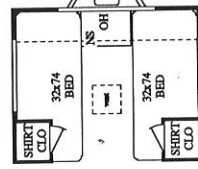
32H AVAILABLE OPTIONS - 6



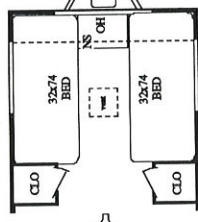
37H AVAILABLE OPTIONS - 2, 5, 11



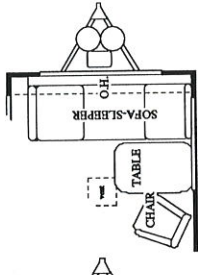
37L AVAILABLE OPTIONS - 6



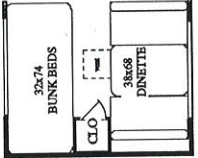
OPTION 1



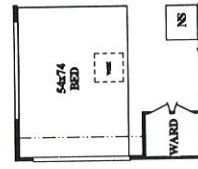
OPTION 2



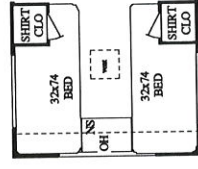
OPTION 4



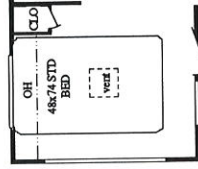
OPTION 5



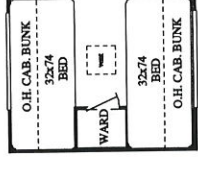
OPTION 7



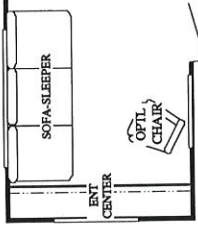
OPTION 8



OPTION 9



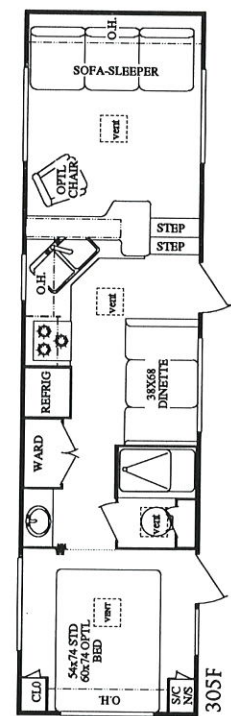
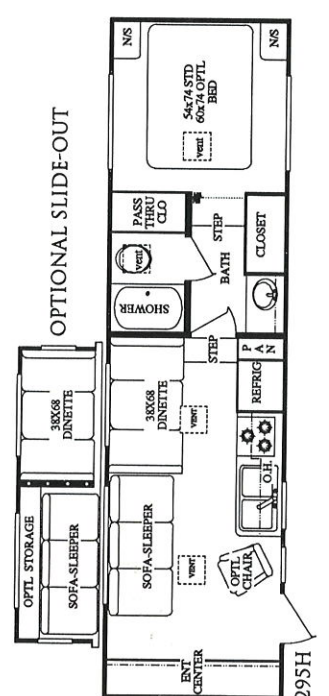
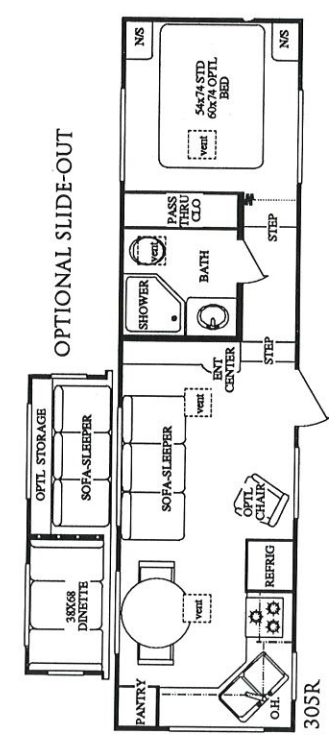
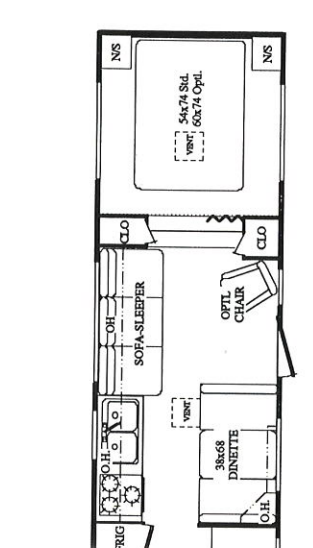
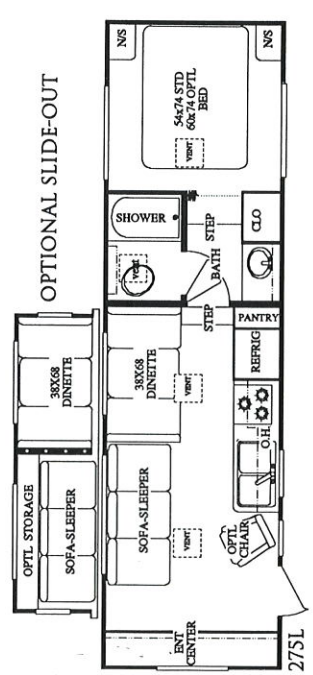
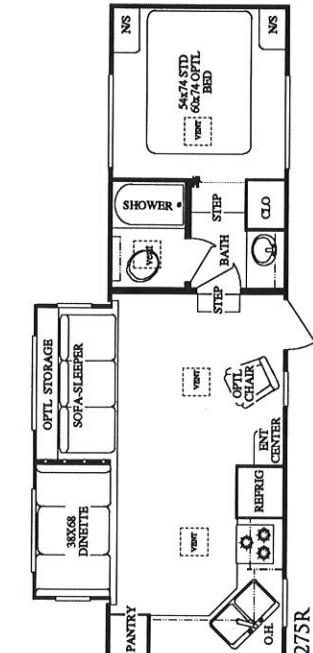
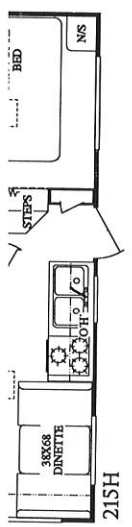
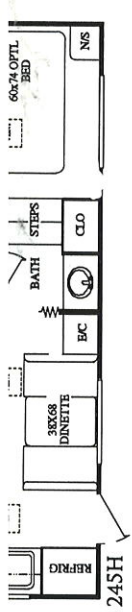
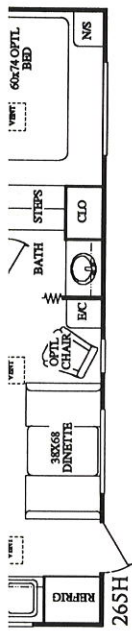
OPTION 10



OPTION 11

WEIGHTS AND DIMENSIONS

Model	18H	20H	20F	20L	22H	24H	24R	27H	27F	27L	30H	30L	30R	32H	35H	35L/AW-SO	37H	37L
Length	18'10"	20'10"	21'5"	20'10"	22'11"	24'11"	25'4"	27'11"	27'11"	27'11"	30'7"	30'7"	30'7"	32'7"	35'11"	35'11"	37'11"	37'11"
Width	96"	96"	96"	96"	96"	96"	96"	96"	96"	96"	96"	96"	96"	96"	96"	96"	96"	96"
Exterior Height	9'2"	9'2"	9'2"	9'2"	9'2"	9'2"	9'2"	9'2"	9'2"	9'2"	9'2"	9'2"	9'2"	9'2"	9'2"	9'2"	9'2"	9'2"
Interior Height	6'6"	6'6"	6'6"	6'6"	6'6"	6'6"	6'6"	6'6"	6'6"	6'6"	6'6"	6'6"	6'6"	6'6"	6'6"	6'6"	6'6"	6'6"
GVWR	5600	5600	NA	5600	7000	7000	7000	7000	7000	7000	7000	7000	7000	7800	7800	7800	7800	7800
Base Weight (lbs.)	NA	3379	NA	3349	3889	4171	3991	4444	4654	4359	5139	3939	4729	5245	5706	NA/NA	6085	6433
Axles Weight (lbs.)	NA	2937	NA	2999	3372	3533	3308	3902	3892	3747	4487	3557	4263	4606	4898	NA/NA	5241	5619
Hitch Weight (lbs.)	NA	442	NA	350	517	638	683	542	762	612	652	382	466	639	808	NA/NA	844	814



**WEIGHTS AND DIMENSIONS**

Model	215H	245H/w-SO	265H/w-SO	265L	275R	275L/w-SO	295H/w-SO	305R/w-SO	305F
Length	21'9"	25'9"	27'7"	27'10"	28'10"	28'10"	30'7"	31'2"	31'2"
Width	96"	96"	96"	96"	96"	96"	96"	96"	96"
Exterior Height	9'2"	10'0"	10'0"	10'0"	11'0"	11'0"	11'0"	11'0"	11'0"
Interior Height	6'6"	6'6"	6'6"	6'6"	6'6"	6'6"	6'6"	6'6"	6'6"
Interior Cabover Height	59"	59"	59"	59"	69"	69"	69"	69"	69"
GVWR (lbs.)	7800	7800	7800	7800	10200	7800/10200	7800/10200	7800/10200	7800
Base Weight (lbs.)	4649	4719/4954	4816/5509	4949	6040	5509/NA	6130/6880	NA/7279	NA
Axles Weight (lbs.)	3913	3752/4117	3893/4361	3867	4786	4109/NA	4521/5587	NA/5676	NA
Hitch Weight (lbs.)	736	967/837	923/1148	1082	1254	1400/NA	1609/1293	NA/1603	NA

## STANDARD FEATURES

**Exterior Features:** Black radius corner jalousie windows • Entry door w/full screen door • Deadbolt door lock • Front travel awning - travel trailers • Grab handle at entrance • Patio light • Front hook-up light • Battery ready includes battery box • Break-away switch • Safety chains (travel trailers) • Single entry step (travel trailers) • Double entry steps (fifth wheels) • Sewer hose bumper

**Construction Features:** 2x3 Floor framing w/decking (2x2 in 22' and smaller models) • 2x4 Tapered roof framing 16" O.C. (2x3 in 24' and smaller models) • Fiberglass insulation • Durable vinyl underbelly • Decorator interior panels • Tandem wide-track brake axles • 15" radial tires w/sport wheels (14" in 20' and smaller models) • Insulated wheel wells • Large exterior storage access w/radius doors and finger pulls

**Appliances and Systems:** 3-burner high-output range w/oven • Lighted power-range hood • Systems monitor panel • Large flush-mount single-door refrigerator • Electronic-ignition furnace • Floor-ducted heat in 24' and larger models • 6-gallon gas water heater • Large double-bowl porcelain kitchen sink • sink cover • 2-20# LP gas bottles w/auto change over (where available) • GFCI receptacle in bath, kitchen, and exterior • 45 amp power-converter w/battery charger (where available) • 30 amp electrical service • TV antenna w/booster and wall jack • AM/FM/cassette stereo w/4 speakers • Demand water systems w/12-volt pump • Fresh water tank (approx. 30 gal) • Grey water tank (approx. 30 gal) • Black water tank (approx. 30 gal)

**Interior Features:** Oak-framed cabinet doors • Decor-glass cabinet doors over sofa and bed • Wrapped lumber core cabinet stiles • Designer shades w/drapes and valances - mini blind in kitchen • Laminated countertops • Mirrored medicine cabinet • Tub/shower w/surround (surround is not available in 27H, 30R, or 275H)

## POPULAR OPTIONS

E.P.D.M. rubber roof over wood decking • Side-mount awning • Innerspring mattress • Microwave oven • Roof-mount air conditioner • Central air conditioning (where available) • Power vent in bath • Twin beds (where available) • Queen bed (where available) • Headboard bedspread and shams • Quilted bedspread • Bumper cover (where available) • Swivel rocker chair (where available) • 31,000 BTU furnace (where available) • Double insulation (main floor and roof) • Foam-core insulation (sidewalls) • Leveling jacks • Telephone jack (where available) • Cable ready • Water heater bypass kit • Folding burner cover • Double-door refrigerator • Black glass refrigerator front • Roof rack and ladder (where available) • Auxiliary TV jack w/shelf • Spare tire, carrier, and cover • Electronic-ignition water heater • Gas/electric water heater • Rear window awning (where available) • LP gas bottle cover (travel trailers) • Shower door (where available) • Tinted safety glass • Double entry steps (travel trailers) • Triple entry steps (FW) • 5/8" plywood floor decking • Solid oak cabinet doors • See your dealer for additional options

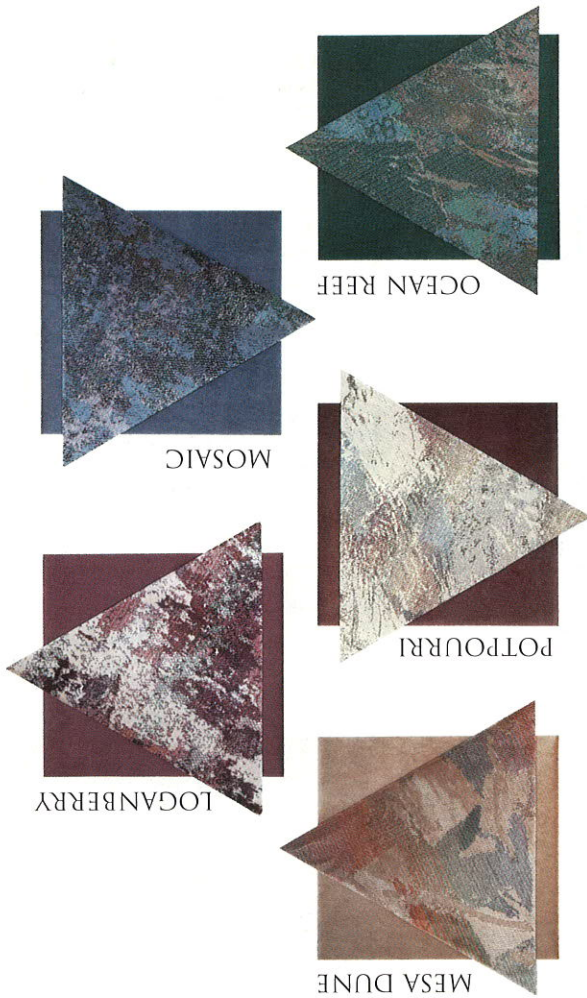
Your nearest dealer:

**Damon**  
CORPORATION  
*Value by Design*

P.O. Box 1107 • Elkhart, IN 46515  
(219) 262-2624



Due to constant product improvements, the equipment, specifications, component parts, and standard optional equipment are subject to change without notice or obligation. Product photography or diagrams may show equipment not available in all areas. Prices, specifications, and availability are subject to change without notice. Components, parts, or chassis may have been manufactured at times other than the model year indicated. All capacities are approximate and dimensions are nominal. See your Damon dealer for full details. DC10/93  
© Damon Corporation - 1993 - Printed in the USA.



Bedroom of Hornet Travel Trailer (Model 27F) featuring oak-framed cabinet doors with designer glass inserts and queen-size bed with fabric on bedspread, shams, drapes and valance complementing the Mosaic decor.

