

Hornet



TRAVEL TRAILERS & FIFTH WHEELS • BY DAMON CORPORATION

Hornet travel trailers and fifth wheels.

Perfectly practical.

The watchword of the '90s is affordability. Today's travel trailer and fifth wheel buyers want products that appeal to their sense of value. Not their sense of vanity.

It is to these people Damon Corporation has dedicated the Hornet line of travel trailers and fifth wheels.

In the Hornet, Damon has perfected the engineering of the towable RV to accommodate all the most popular features in a very affordable package. One might say it's the perfectly practical recreational vehicle. Read on and you'll soon see why.

Exceptional design

One look inside the Hornet and you'll see how thoughtfully it was designed. There are an incredible 24 floor plans and 8 floor plan options available. Each of them accommodates both comfort and convenience. Appliances are strictly state-of-the-art, including four-burner range with oven, large flush-mounted refrigerator, and a large double-bowl porcelain kitchen sink.

The decor is truly exceptional. Oak-framed cabinet doors, wainscoting and chair rail add a



(Above) Hornet Fifth Wheel (Model 295H) interior featuring dark Adkins oak-framed cabinet doors with designer glass inserts in living room, Horizon fabric decor, four-burner range with oven, optional microwave, and easy action slide-out living and dining area. (Right) Bedroom of Hornet Fifth Wheel (Model 295H) showing Horizon fabric decor including queen-size bed (optional), headboard, bedspread and slams plus designer shade with drapes and valance.

significant measure of charm and warmth not commonly found in recreational vehicles in any price range. The designer fabrics for upholstered furniture, drapes, valances and bedroom accessories feature stylish colors and patterns that are as timeless as they are tasteful. Accent items like



decorator glass cabinet doors over the sofa lend the perfect additional touches to this unique decor package.

The exterior of the Hornet is equally attractive and practical. Damon's overall exterior styling has become the standard of the industry. Black radius corner jalousie windows and a front travel awning (on Hornet travel trailers) perfectly complement the rugged two-tone exterior walls.

Built to go the distance

Of course, good design is more than aesthetics. It includes precise engineering and quality construction. And those attributes are the ones which really set Hornet apart from the competition.

Hornet towables feature tandem wide track brake axles, 15" radial tires with sport wheels on many models, and large exterior storage access.

Another reason Hornet travel trailers and fifth wheels are such an excellent value is that many of the most popular options on competitive brands come standard with Hornet. Of course, if it's options you want, Hornet has plenty. Including queen or twin beds, central air

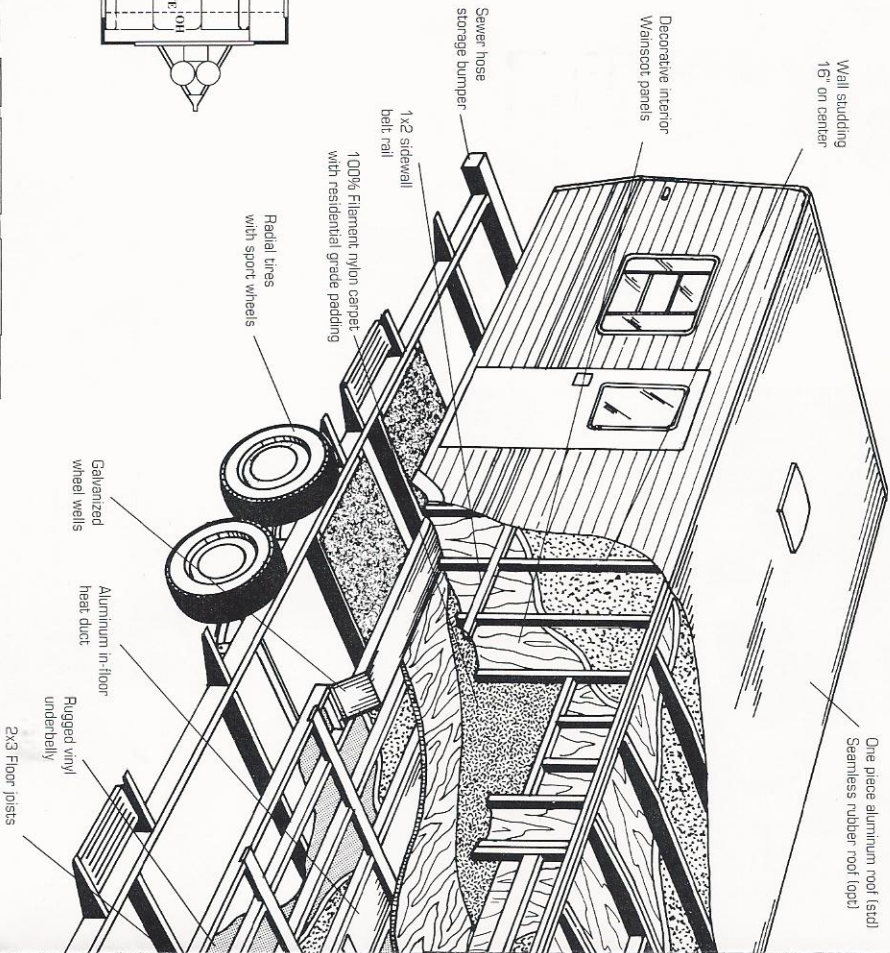
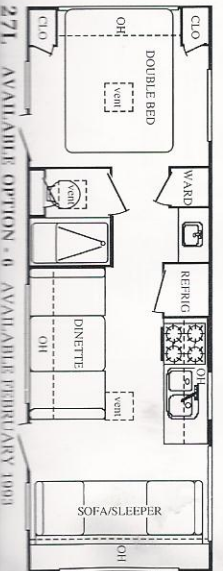
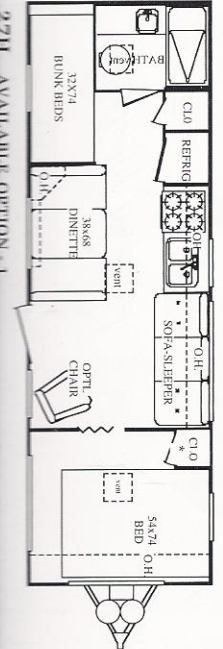
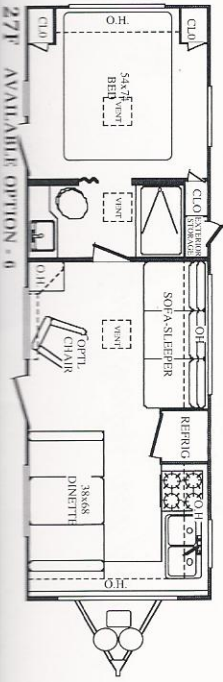
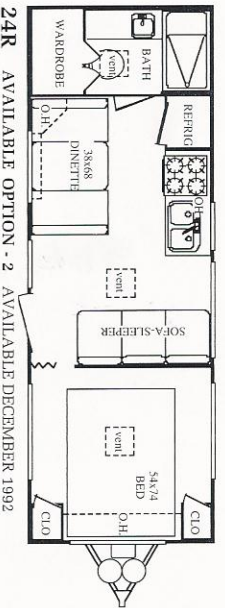
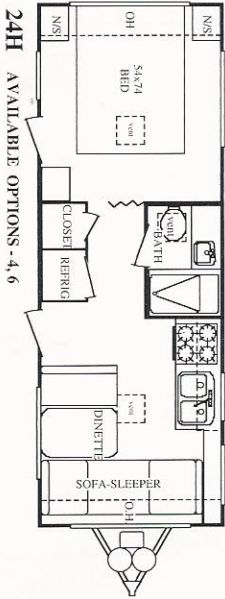
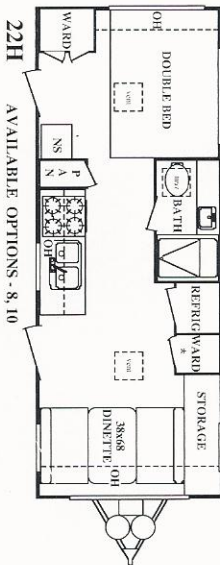
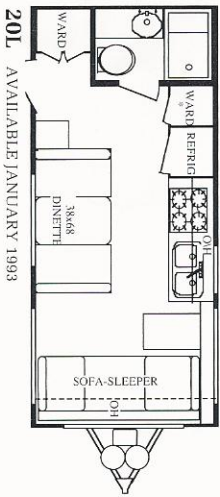
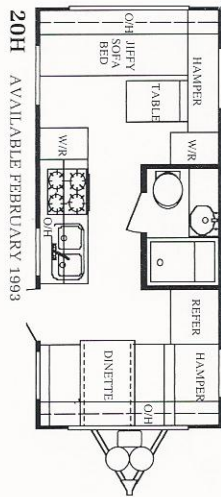
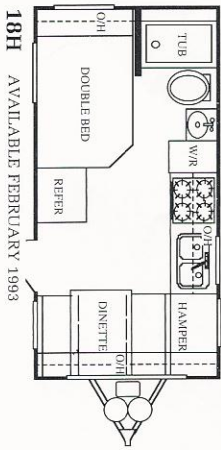
conditioning, microwave, cable-ready wiring and auxiliary TV jack, rear window awning and much more.

When you consider all the features, comfort and convenience you get with a Hornet travel trailer or fifth wheel for such a low price, it spells one word. Value. But don't just take our word for it. Compare Hornet with other towables on your dealer's lot. Dollar for dollar, you won't find a better value. Anywhere.

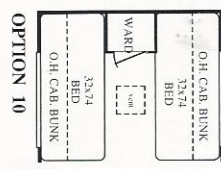
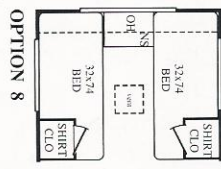
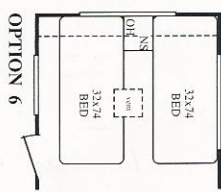
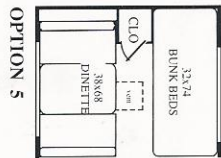
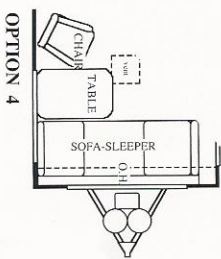
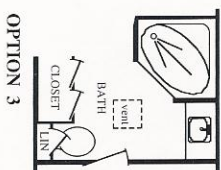
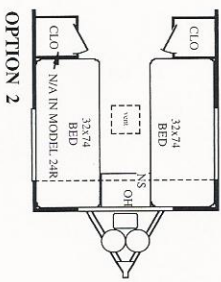
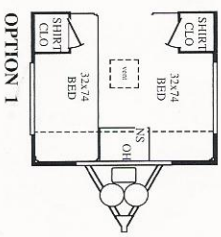
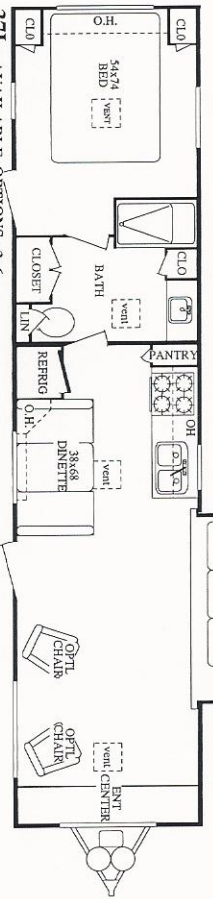
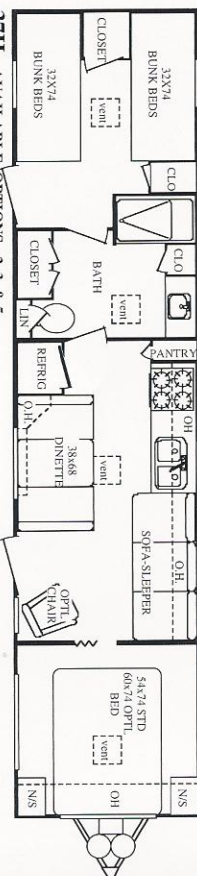
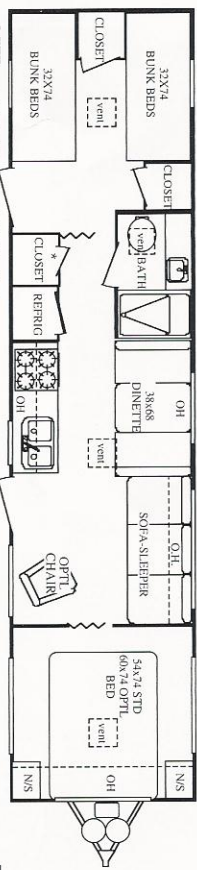
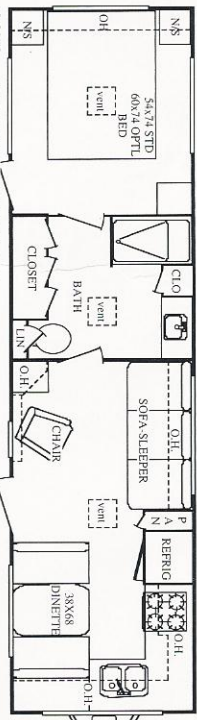
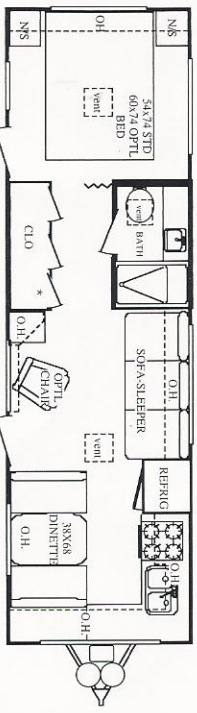
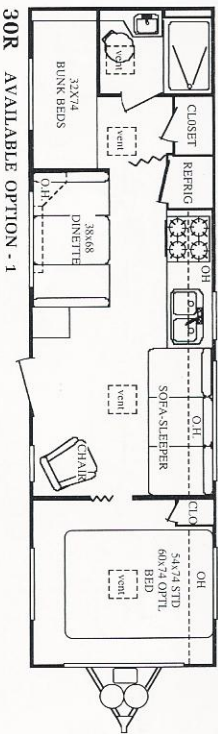
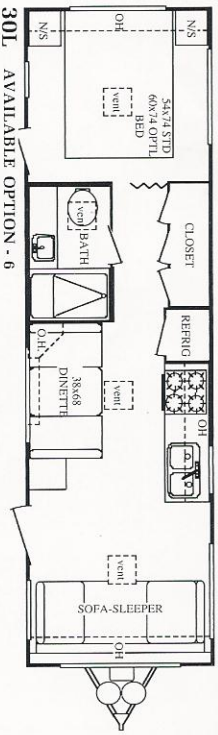
Interior of Hornet Travel Trailer (Model 27H) showing oak-framed cabinet doors with designer glass inserts and Sandrift fabric decor, designer shades with drapes and valances, large double-bowl porcelain sink and laminated counter tops.

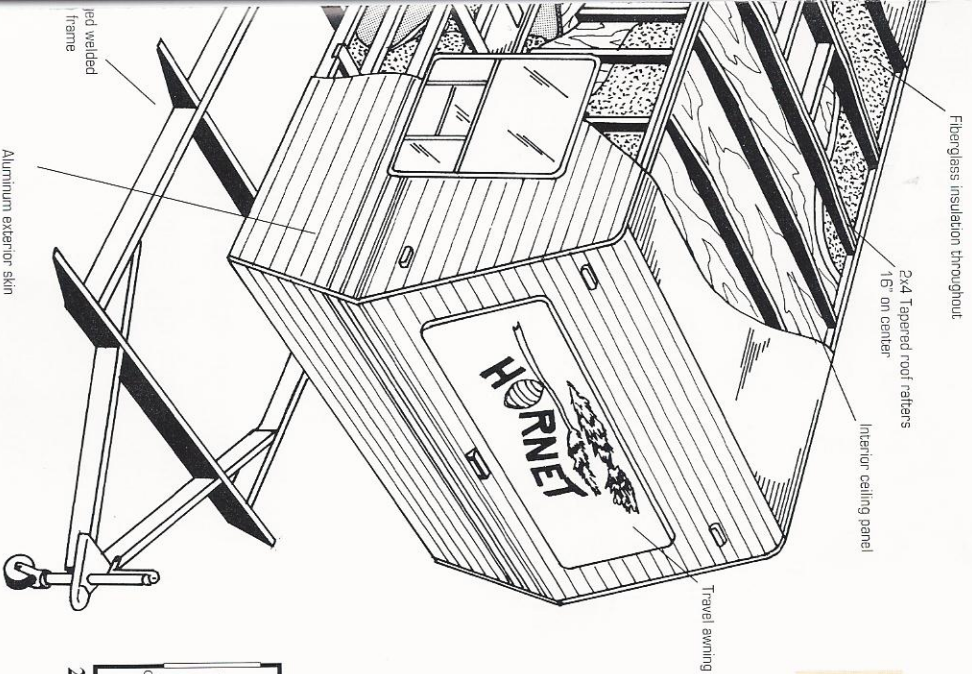


1993 Fleet Travel Trailer Floor Plans

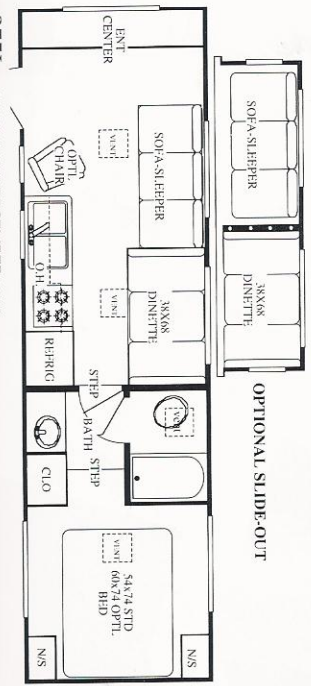
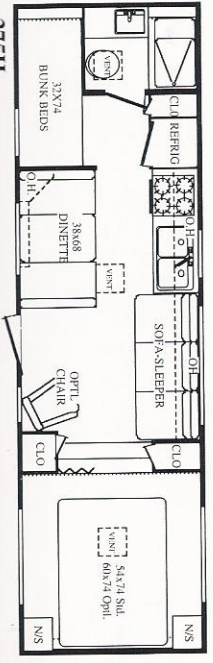
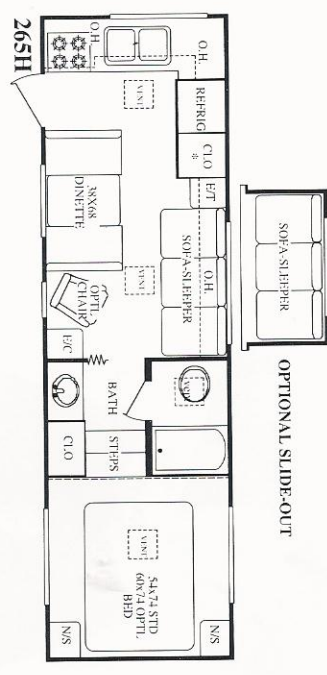
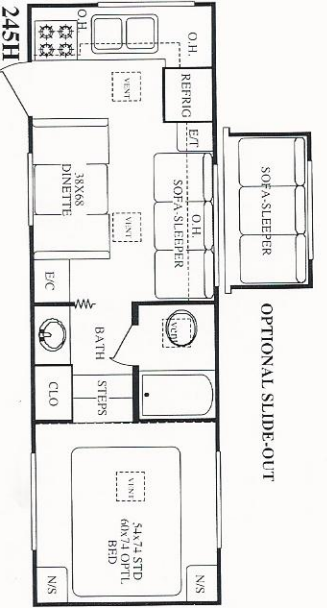
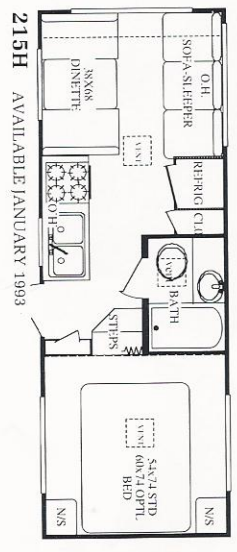
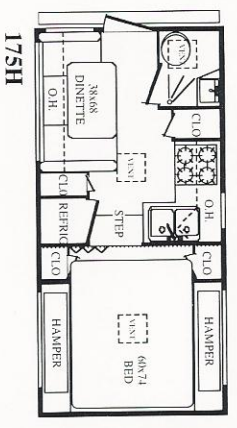


Ruged steel



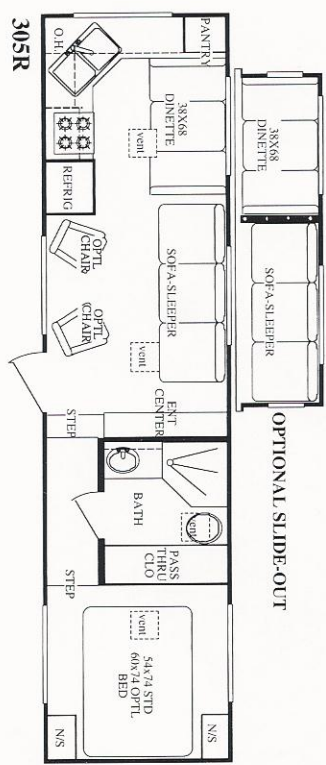
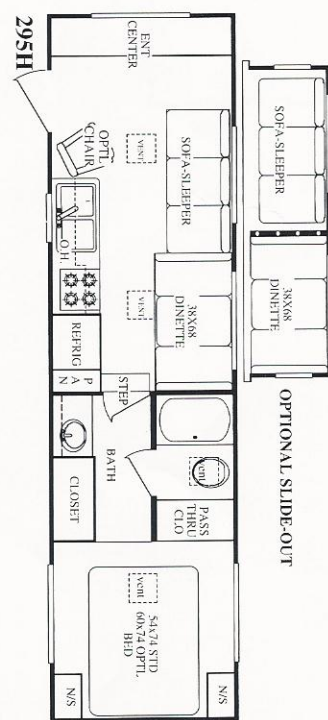
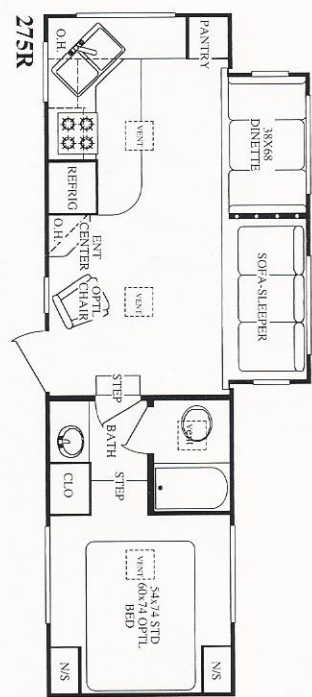


1993 Honey Bee Wheel Floor Plan Selections



275H

275L AVAILABLE DECEMBER 1992



Weights and Dimensions

| Model | 18H | 20H | 20L | 22H | 24H | 24R | 27H | 27F | 27L | 30H | 30L | 30R | 32H | 35H | 37H | 37L | 175H | 215H | 245H | 265H | 275H | 275R | 275L | 295H | 305R |
|------------------|--------|--------|--------|--------|--------|-------|--------|--------|--------|-------|-------|-------|-------|--------|--------|--------|--------|-------|-------|-------|--------|--------|--------|-------|-------|
| Length | 18'10" | 20'10" | 20'10" | 22'11" | 24'11" | 25'4" | 27'11" | 27'11" | 27'11" | 30'7" | 30'7" | 30'7" | 32'7" | 35'11" | 37'11" | 37'11" | 17'10" | 21'9" | 25'9" | 27'7" | 27'10" | 28'10" | 28'10" | 30'7" | 31'2" |
| Width | 96" | 96" | 96" | 96" | 96" | 96" | 96" | 96" | 96" | 96" | 96" | 96" | 96" | 96" | 96" | 96" | 96" | 96" | 96" | 96" | 96" | 96" | 96" | 96" | 96" |
| Exterior Height | 9'2" | 9'2" | 9'2" | 9'2" | 9'2" | 9'2" | 9'2" | 9'2" | 9'2" | 9'2" | 9'2" | 9'2" | 9'2" | 9'2" | 9'2" | 9'2" | 9'2" | 9'2" | 9'2" | 10'0" | 10'0" | 10'0" | 11'0" | 11'0" | 11'0" |
| Interior Height | 6'6" | 6'6" | 6'6" | 6'6" | 6'6" | 6'6" | 6'6" | 6'6" | 6'6" | 6'6" | 6'6" | 6'6" | 6'6" | 6'6" | 6'6" | 6'6" | 6'6" | 6'6" | 6'6" | 6'6" | 6'6" | 6'6" | 6'6" | 6'6" | 6'6" |
| Int. Cabover Ht. | N/A | N/A | N/A | N/A | N/A | N/A | N/A | N/A | N/A | N/A | N/A | N/A | N/A | N/A | N/A | N/A | 59" | 59" | 59" | 59" | 59" | 59" | 59" | 69" | 69" |
| GVWR | N/A | N/A | N/A | 7400 | 7400 | N/A | 7400 | 7400 | N/A | 7500 | N/A | N/A | 7600 | 7600 | 7800 | 7800 | 5790 | N/A | 7800 | 7800 | 7800 | 7800 | 7800 | 7800 | N/A |
| Base Weight | N/A | N/A | N/A | 3889 | 4171 | N/A | 4444 | 4654 | N/A | 5139 | N/A | N/A | 5245 | 5706 | 6085 | 6433 | 3140 | N/A | 4719 | 4816 | 4949 | 6040 | N/A | 5796 | N/A |
| Axles Weight | N/A | N/A | N/A | 3372 | 3533 | N/A | 3902 | 3892 | N/A | 4487 | N/A | N/A | 4606 | 4898 | 5241 | 5619 | 2610 | N/A | 3752 | 3893 | 3867 | 4786 | N/A | 4579 | N/A |
| Hitch Weight | N/A | N/A | N/A | 517 | 638 | N/A | 542 | 762 | N/A | 652 | N/A | N/A | 639 | 808 | 844 | 814 | 530 | N/A | 967 | 923 | 1082 | 1254 | N/A | 1217 | N/A |

Features

CONSTRUCTION FEATURES

- 2x3 Floor framing * w/decking
- 2x4 Tapered roof framing 16"O.C.
- Fiberglass insulation
- Durable vinyl underbelly
- Decorator interior panels
- Tandem wide track brake axles
- 15" radial tires * w/sport wheels
- Insulated wheel wells
- Large exterior storage access

INTERIOR FEATURES

- Oak framed cabinet doors
- Decor glass cabinet doors over sofa & bed
- Wrapped lumber core cabinet stiles
- Designer shades w/drapes & valances
- Laminated countertops
- Innerspring mattress
- Mirrored medicine cabinet
- Tub/shower w/surround

EXTERIOR FEATURES

- Black radius corner jalousie windows
- Entry door w/full screen door
- Deadbolt door lock
- Front travel awning - travel trailers
- Grab handle @ entrance
- Patio light
- Front hook-up light
- Battery ready
- Break-away switch
- Safety chains (travel trailers)
- Single entry step (travel trailers)
- Double entry steps (fifth wheels) *
- Sewer hose bumper

APPLIANCES & SYSTEMS

- 4-burner range w/oven
- Lighted power range hood
- Systems monitor panel
- Large flush mount single door refrigerator
- Electronic ign. furnace w/floor ducted heat *
- 6 gallon gas water heater
- Large double bowl porcelain kitchen sink
- Sink cover
- 2-30# LP Gas bottles w/auto change over *
- GFCl receptacle in bath, kitchen, & exterior
- 45 amp power converter w/battery charger *
- 30 amp electrical service
- TV antenna w/booster and wall jack
- AM/FM/Cassette stereo w/4 speakers
- Demand water system w/12 volt pump
- Fresh water tank (approx 30 gal)
- Grey water tank (approx 30 gal)
- Black water tank (approx 30 gal)

POPULAR OPTIONS

- E.P.D.M. rubber roof over wood decking
- Side awning
- Microwave oven
- Roof mount air conditioner
- Central air conditioning (where available)
- Power vent in bath
- Twin beds (where available)
- Queen bed (where available)
- Headboard bedspread and shams
- Quilted bedspread
- Bumper cover (where available)
- Swivel rocker chair (where available)
- 30,000 BTU furnace (where available)
- Double insulation (floor & roof)

- Foam core insulation (sidewalls)
- Leveling jacks
- Telephone jack (where available)
- Cable ready
- Water heater by-pass kit
- Folding burner cover
- Double door refrigerator
- Black glass refrigerator front
- Roof rack and ladder (where available)
- Auxiliary TV jack w/shelf
- Spare tire carrier and cover
- Electronic ignition water heater
- Gas/electric water heater
- Rear window awning (where available)
- LP gas bottle cover (travel trailers)
- Shower door (where available)
- Tinted safety glass
- Double entry steps (travel trailers)
- Triple entry steps (FW where available)
- 5/8" plywood floor decking
- Solid oak cabinet doors
- See your dealer for additional options

*Not available on all models



Value by Design

52570 Paul Drive
Elkhart, IN 46514
(219) 262-2624

Your nearest dealer:

JERRY'S TRAILERS & CAMPERS
2601 S. 13th St.
Norfolk, NE 68701

Due to constant product improvements, the equipment, specifications, component parts, and standard/optional equipment are subject to change without notice or obligation. Product photography or diagrams may show equipment that is optional. Damon Corporation reserves the right to make changes in prices, and models, and to discontinue or alter equipment without notice. All equipment shown here may not have been manufactured at times other than the model year indicated. All capacities are approximate and dimensions are nominal. See your Damon dealer for full details. DC 9/4/92